

three eighths inch = one foot  
one eighth inch = one foot  
one quarter inch = one foot  
one half inch = one foot  
one inch = one foot  
one and one half inches = one foot  
two inches = one foot  
three inches = one foot  
four inches = one foot  
five inches = one foot  
six inches = one foot  
seven inches = one foot  
eight inches = one foot  
nine inches = one foot  
ten inches = one foot  
eleven inches = one foot  
twelve inches = one foot  
thirteen inches = one foot  
fourteen inches = one foot  
fifteen inches = one foot  
sixteen inches = one foot  
seventeen inches = one foot  
eighteen inches = one foot  
nineteen inches = one foot  
twenty inches = one foot  
twenty one inches = one foot  
twenty two inches = one foot  
twenty three inches = one foot  
twenty four inches = one foot  
twenty five inches = one foot  
twenty six inches = one foot  
twenty seven inches = one foot  
twenty eight inches = one foot  
twenty nine inches = one foot  
thirty inches = one foot  
thirty one inches = one foot  
thirty two inches = one foot  
thirty three inches = one foot  
thirty four inches = one foot  
thirty five inches = one foot  
thirty six inches = one foot  
thirty seven inches = one foot  
thirty eight inches = one foot  
thirty nine inches = one foot  
forty inches = one foot  
forty one inches = one foot  
forty two inches = one foot  
forty three inches = one foot  
forty four inches = one foot  
forty five inches = one foot  
forty six inches = one foot  
forty seven inches = one foot  
forty eight inches = one foot  
forty nine inches = one foot  
fifty inches = one foot  
fifty one inches = one foot  
fifty two inches = one foot  
fifty three inches = one foot  
fifty four inches = one foot  
fifty five inches = one foot  
fifty six inches = one foot  
fifty seven inches = one foot  
fifty eight inches = one foot  
fifty nine inches = one foot  
sixty inches = one foot  
sixty one inches = one foot  
sixty two inches = one foot  
sixty three inches = one foot  
sixty four inches = one foot  
sixty five inches = one foot  
sixty six inches = one foot  
sixty seven inches = one foot  
sixty eight inches = one foot  
sixty nine inches = one foot  
seventy inches = one foot  
seventy one inches = one foot  
seventy two inches = one foot  
seventy three inches = one foot  
seventy four inches = one foot  
seventy five inches = one foot  
seventy six inches = one foot  
seventy seven inches = one foot  
seventy eight inches = one foot  
seventy nine inches = one foot  
eighty inches = one foot  
eighty one inches = one foot  
eighty two inches = one foot  
eighty three inches = one foot  
eighty four inches = one foot  
eighty five inches = one foot  
eighty six inches = one foot  
eighty seven inches = one foot  
eighty eight inches = one foot  
eighty nine inches = one foot  
ninety inches = one foot  
ninety one inches = one foot  
ninety two inches = one foot  
ninety three inches = one foot  
ninety four inches = one foot  
ninety five inches = one foot  
ninety six inches = one foot  
ninety seven inches = one foot  
ninety eight inches = one foot  
ninety nine inches = one foot  
one hundred inches = one foot

GENERAL NOTES

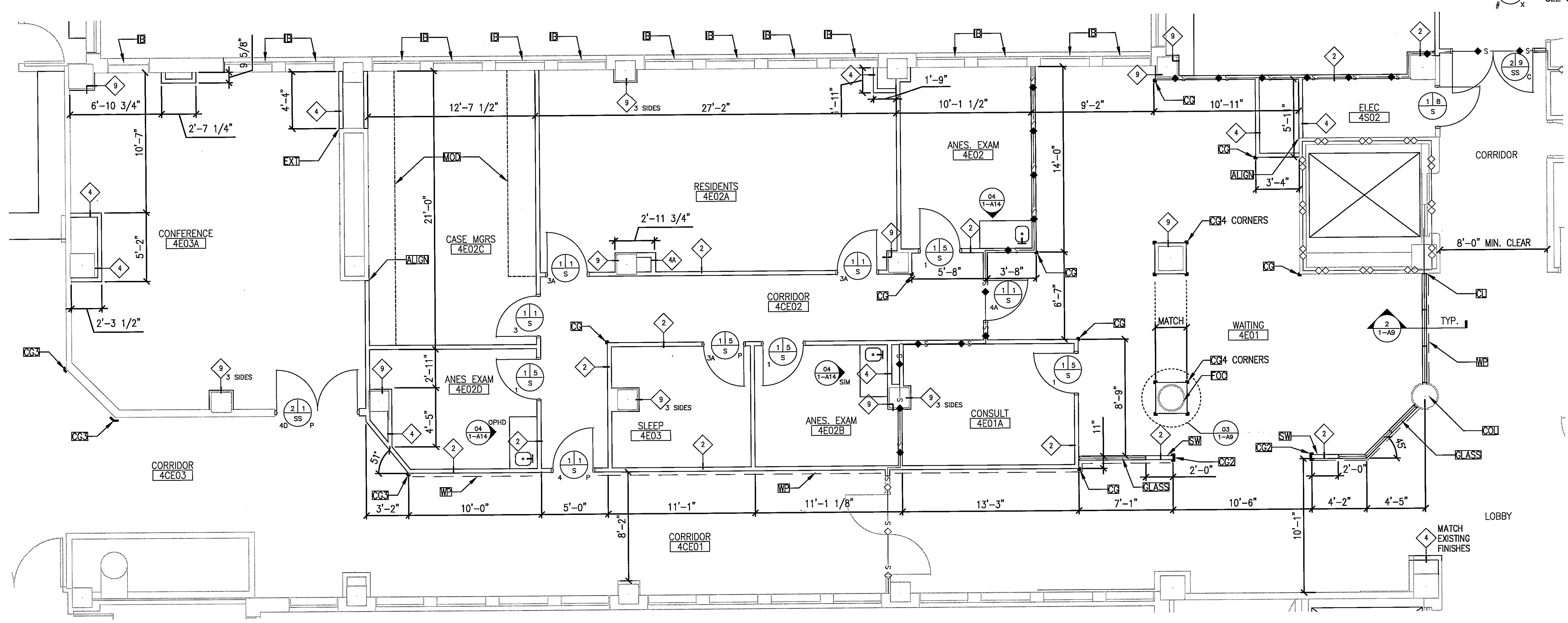
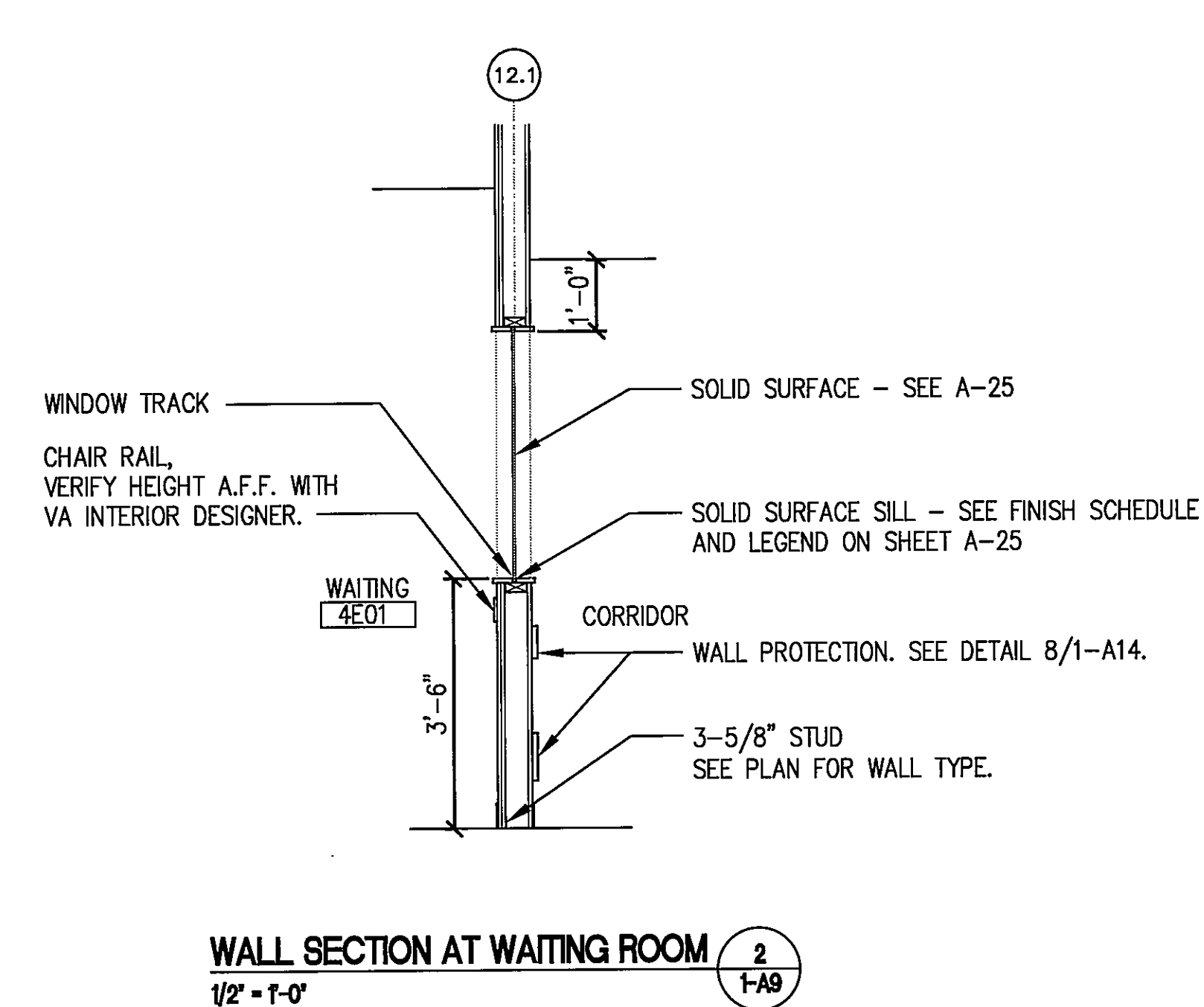
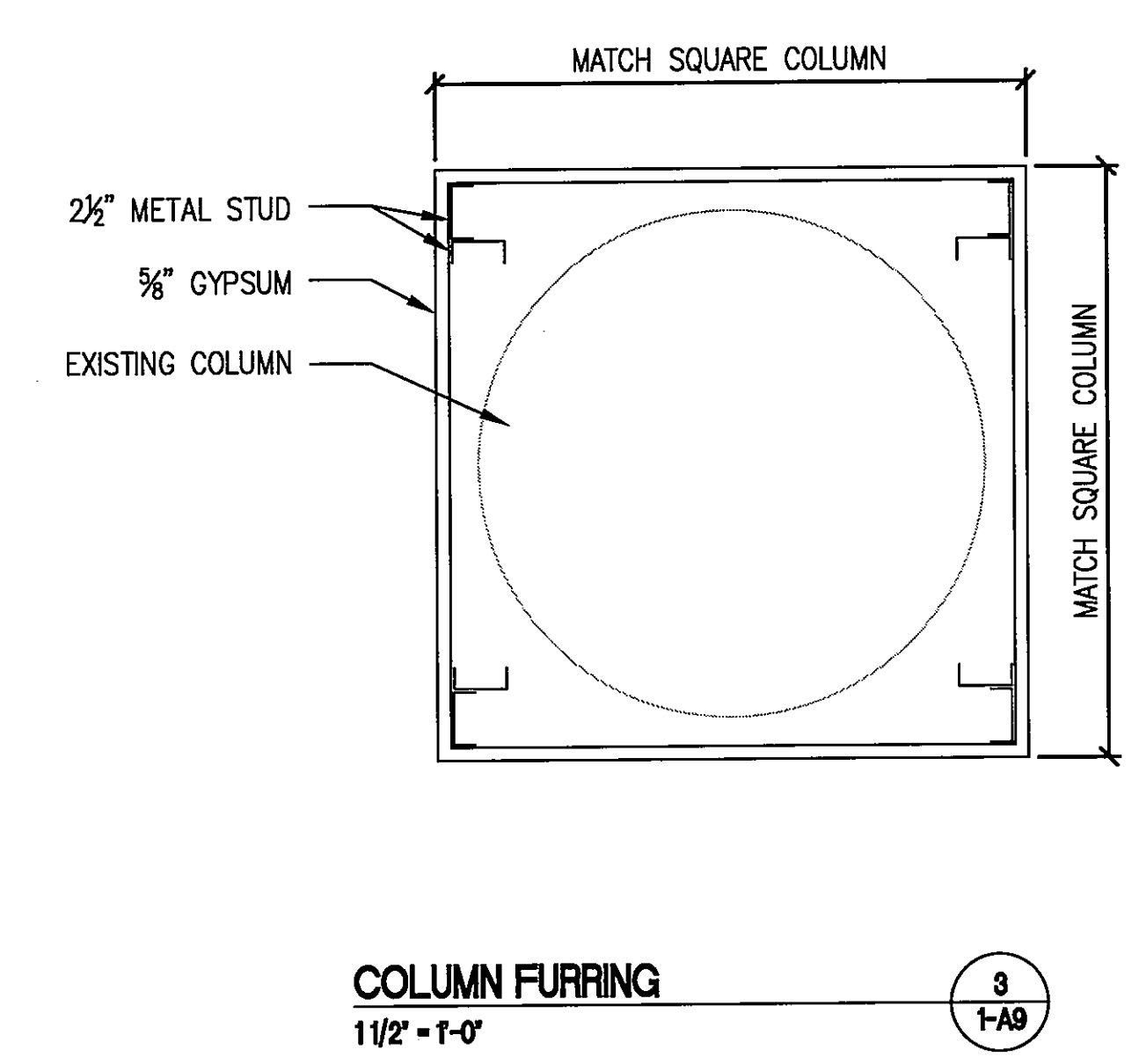
- A. MAINTAIN 5'-0" MINIMUM CLEAR WIDTH AT ALL CORRIDORS  
B. PATCH AND PAINT EXISTING WALLS  
C. ALL WALLS TO BE TYPE 1, U.N.O. SEE SHEET 1-A16 FOR PARTITION TYPES.  
D. ALL CORNER GUARDS ON 4TH FLOOR ARE TO BE PETG.  
CORNER GUARDS ON NEW WALLS ARE TO BE FLUSH.  
CORNER GUARDS ON EXISTING WALL ARE TO BE SURFACE MOUNTED.  
FOR CORNER GUARD DETAILS SEE SHEET 1-A14.  
E. ALL DOOR FRAMES TO BE 4" FROM THE WALL THAT IS ADJACENT TO THE HINGE SIDE OF THE DOOR, U.N.O.  
F. USE A LONG TOE BASE AT ALL EXISTING EXTERIOR WALLS.

KEYNOTE LEGEND

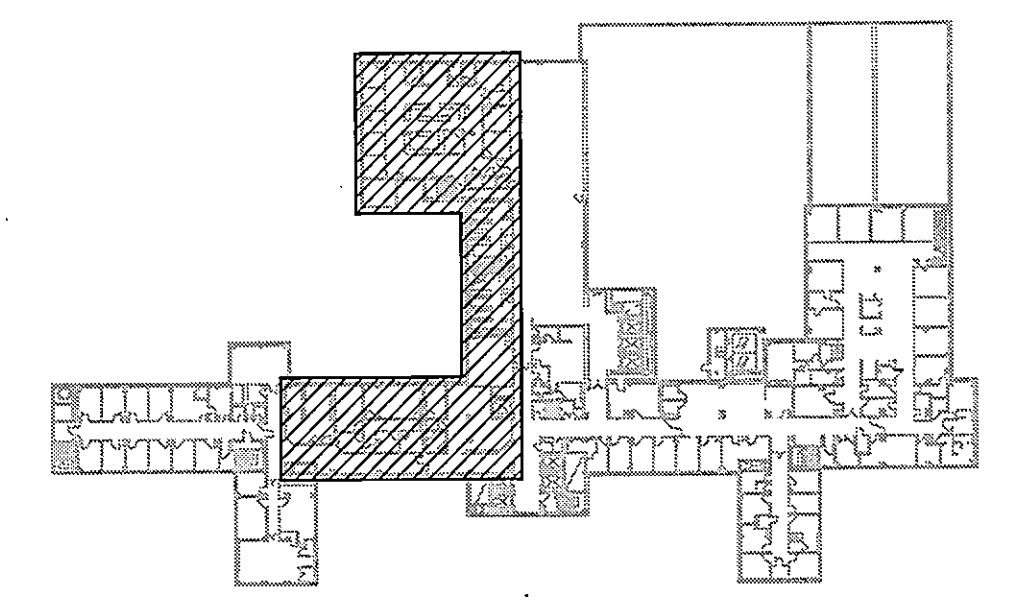
KEY	DESCRIPTION
GLASS	BORROWED LIGHT IN WALL. SEE 2/1-A9 FOR DETAILS
SW	FULL HEIGHT WALL FOR PIPE CHASE EACH SIDE OF OPENING
CL	WALL LOCATED AT EXISTING CENTERLINE OF COLUMN
ALIGN	ALIGN WALL FLUSH WITH EXISTING WALL
EXT	EXTEND EXISTING CHASE WALL TO EXTERIOR AS SHOWN
CG	90 DEGREE CORNER GUARD. SEE GENERAL NOTE "D".
CG2	END WALL GUARD. SEE GENERAL NOTE "D".
CG3	135 DEGREE CORNER GUARD. SEE GENERAL NOTE "D".
FOC	FURR OUT COLUMN TO MATCH SQUARE COLUMN DIMENSIONS AND FINISHES IN WAITING ROOM
COL	SEE COLUMN DETAILS B6 & C7/1-A25
WP	INSTALL WALL PROTECTION - SEE DETAIL 8/1-A14
IB	PROVIDE INTEGRAL BLINDS IN EXTERIOR WINDOWS - SEE SPECIFICATION 08 51 16.
MOD	MODULAR FURNITURE TO BE PROVIDED BY VA. COORDINATE WITH ELECTRICAL AND COMMUNICATION REQUIREMENTS.

LEGEND

- ◇— FIRE RESISTIVE RATED LINE, 2 HOUR (EXISTING WALL)  
—◇— FIRE-RATED, SMOKE BARRIER LINE, 1 HOUR (EXISTING WALL)  
—◇— FIRE-RATED, SMOKE BARRIER LINE, 1 HOUR  
TA-20 TOILET ACCESSORIES - SEE SHEET 1-A15  
# # X DOOR OPENING/BORROWED LIGHT IDENTIFIER. SEE SHEET 1-A17 FOR DOOR SYMBOL EXAMPLE.



ENLARGED FOURTH FLOOR PLAN  
1/4" = 1'-0"



KEY PLAN  
NOT TO SCALE  
FULLY SPRINKLERED BUILDING  
BID DOCUMENTS

<b>CONSULTANTS:</b> <b>KZFO-SIGN</b> 700 BROADWAY STREET CINCINNATI, OH 45202-6010 PHONE: 513.621.6211 FAX: 513.621.6530			<b>ARCHITECT/ENGINEERS:</b> <b>PARADIGM</b> ENGINEERS AND CONSTRUCTORS PO BOX 436223 Louisville, Kentucky 40253 - PH: 502.339.8511 - www.paradigmusa.com		<b>Drawing Title:</b> ENLARGED FOURTH FLOOR PLAN (1 OF 2)  <b>Approved Project Director</b>	<b>Project Title:</b> SURGICAL SUPPORT AND LOCKERS  <b>Locations:</b> IOWA CITY VAMC 601 HIGHWAY 6 WEST, IOWA CITY, IOWA 52249-2208 <b>Date:</b> 07-13-12 <b>Checked:</b> SULLIVAN <b>Drawn:</b> SAID/BRUNNER	<b>Project Number:</b> 636A8-11-011 <b>Building Number:</b> 1 <b>Drawing Number:</b> 1-A9	<b>Office of Construction and Facilities Management</b> 
---	--	--	---	--	--	--	--	---