

three inches = one foot
one and one half inches = one foot
one inch = one foot
three quarters inch = one foot
one half inch = one foot
three eighths inch = one foot
one quarter inch = one foot
one eighth inch = one foot



BASEMENT CEILING PLAN
1/8" = 1'-0"

GENERAL NOTES

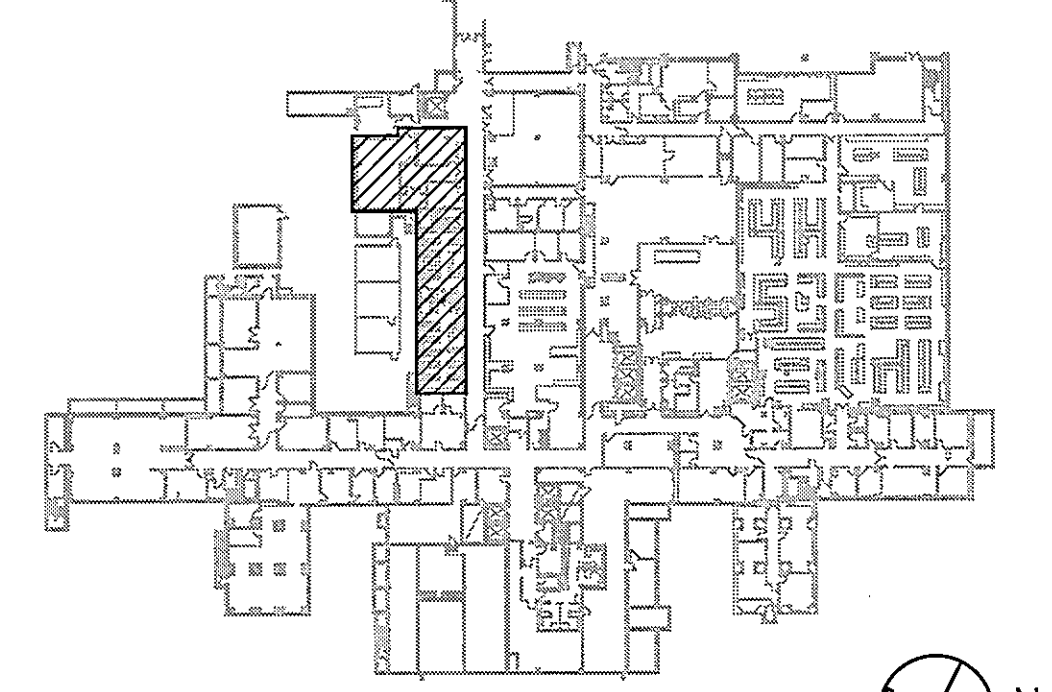
A. ACOUSTICAL LAY-IN CEILING TILE TO BE ARMSTRONG 584
CURRUS ANGLED REGULAR (#584)

LEGEND

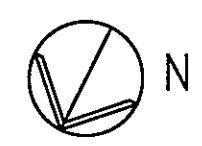
- 2x4 ACOUSTICAL LAY-IN CEILING TILE
- SUSPENDED GYPSUM BOARD CEILING
- 2'x4' FLUORESCENT LIGHT FIXTURE, REF 'E' DRAWINGS
- 2'x4' FLUORESCENT LIGHT FIXTURE (EMERGENCY CIRCUIT), REF 'E' DRAWINGS
- 1'x4' FLUORESCENT LIGHT FIXTURE, REF 'E' DRAWINGS
- RETURN AIR DEVICE, REF 'M' DRAWINGS.
- SUPPLY AIR DEVICE, REF 'M' DRAWINGS.
- EXIT SIGN

KEYNOTE LEGEND	
KEY	DESCRIPTION
RC	PATCH AND REPAIR EXISTING CEILING AS REQUIRED
AP	24"x24" ACCESS PANEL

ROOM IDENTIFICATION		
ROOM NUMBER	ROOM NAME	CEILING HEIGHT
BS01	MENS	8'-0"
BS02	WOMENS	8'-0"
BS03	HAZ STOR	8'-0"
BS05	WASH RACK	8'-0"
BS05A	PUMP ROOM	8'-0"
BS07	SOILED LINEN	8'-0"
BS05B	EQUIPMENT	8'-0"



KEY PLAN
NOT TO SCALE
FULLY SPRINKLERED BUILDING
BID DOCUMENTS

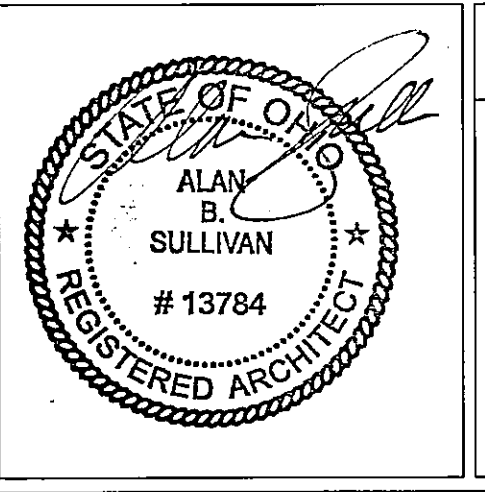


Revisions	Date

CONSULTANTS:

KZFD SIGN

700 BROADWAY STREET
CINCINNATI, OH 45202-6010
PHONE: 513.621.6211
FAX: 513.621.6550



ARCHITECT/ENGINEERS:

PARADIGM

ENGINEERS AND CONSTRUCTORS

PO BOX 436223 Louisville, Kentucky 40253 - PH: 502.339.8511 - www.paradigmusa.com

Drawing Title:
BASEMENT CEILING PLAN

Approved: Project Director

Project Title:
SURGICAL SUPPORT AND LOCKERS

Location: IOWA CITY VAMC
601 HIGHWAY 6 WEST, IOWA CITY, IOWA 52246-2208

Date: 07-18-12

Checked: SULLIVAN

Drawn: SADD/BRUNNER

Project Number: 636A8-11-011

Building Number: 1

Drawing Number: 1-A11

Office of Construction and Facilities Management

Department of Veterans Affairs