

three inches = one foot  
one and one half inches = one foot  
one inch = one foot  
three quarters inch = one foot  
one half inch = one foot  
three eighths inch = one foot  
one quarter inch = one foot  
one eighth inch = one foot

GENERAL NOTES

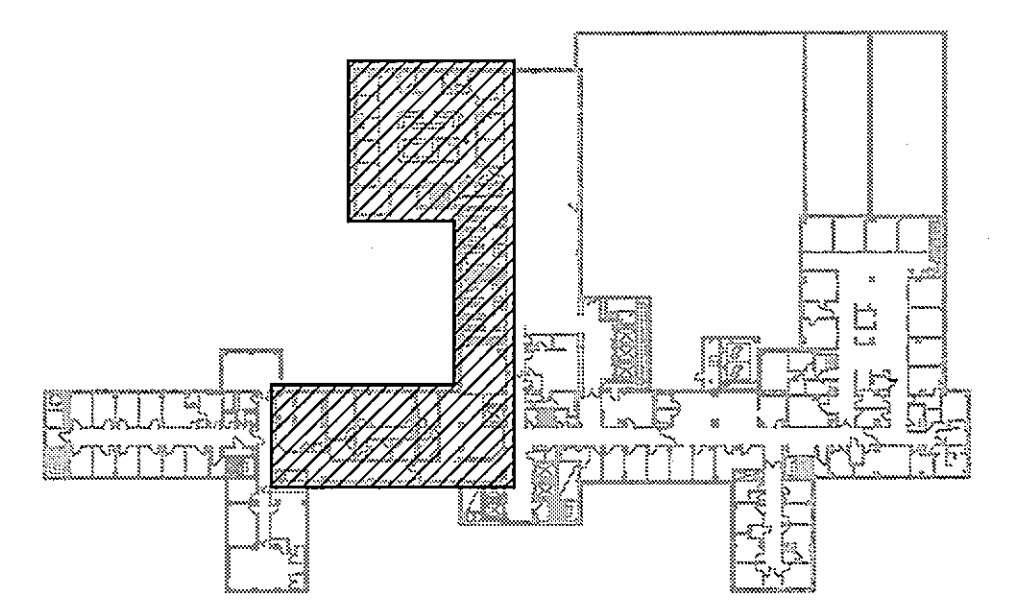
A. ACOUSTICAL LAY-IN CEILING TILE TO BE ARMSTRONG 584 CIRBUS ANGLED TEGULAR (#584)

LEGEND

- 2X2 ACOUSTICAL LAY-IN CEILING TILE
- SUSPENDED GYPSUM BOARD CEILING (SEE LEGEND BELOW FOR ADDITIONAL INFORMATION)
- 2'x4' FLUORESCENT LIGHT FIXTURE, REF 'E' DRAWINGS
- 2'x4' FLUORESCENT LIGHT FIXTURE (EMERGENCY CIRCUIT), REF 'E' DRAWINGS
- 1'x4' FLUORESCENT LIGHT FIXTURE, REF 'E' DRAWINGS
- RETURN AIR DEVICE, REF 'M' DRAWINGS.
- SUPPLY AIR DEVICE, REF 'M' DRAWINGS.
- EXIT SIGN
- DOMELIGHT
- SCOPE OF WORK LIMITS

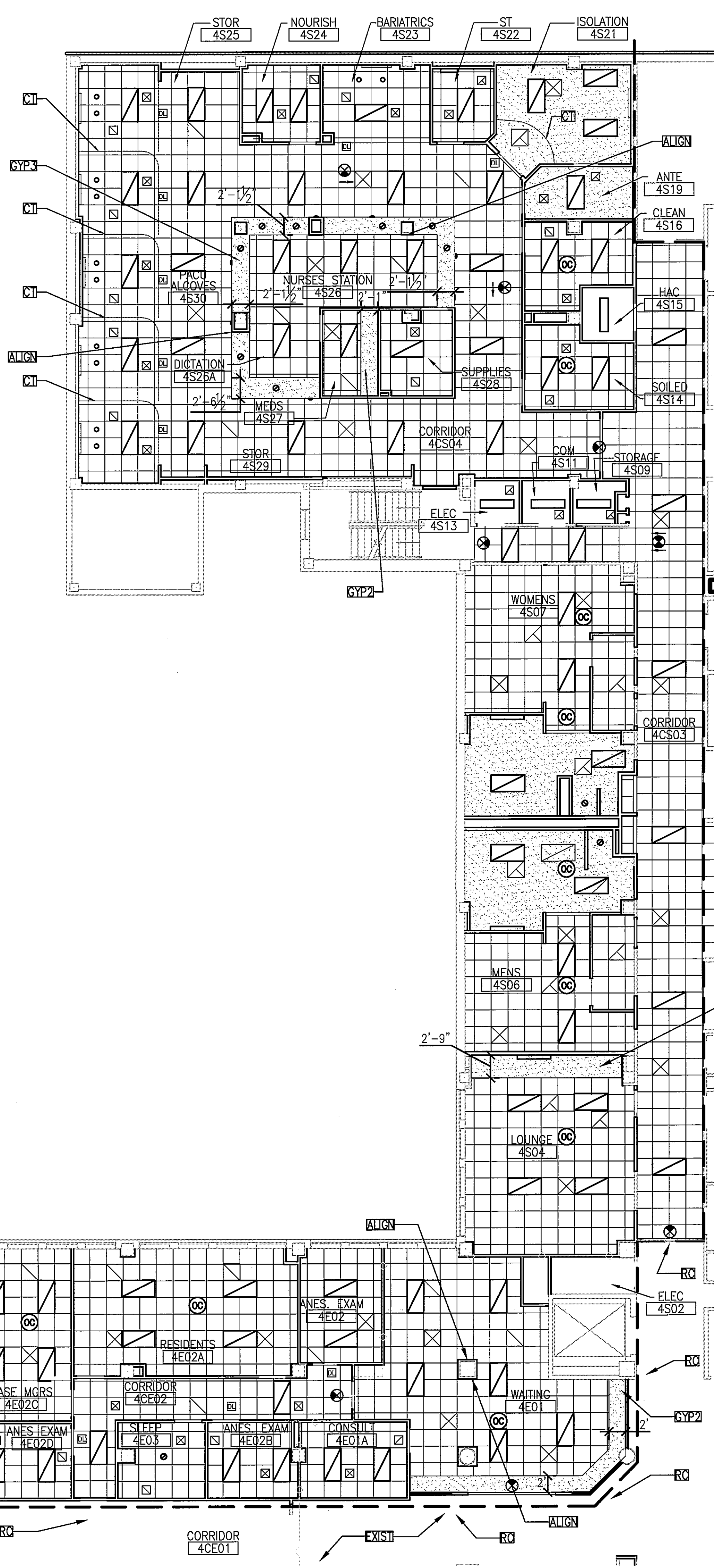
KEYNOTE LEGEND	
KEY	DESCRIPTION
GYP2	GYP BOARD SOFFIT, SEE DETAIL 2/1-A12
GYP3	GYP BOARD SOFFIT, SEE DETAIL 3/1-A12
ALIGN	ALIGN FACE OF SOFFIT WITH COLUMN FACE
EXIST	EXISTING CEILING AND SOFFIT
PJ	CEILING MOUNT FOR PROJECTOR
CT	CURTAIN TRACK, SEE DETAIL 4/1-A12
RC	PATCH AND REPAIR EXISTING CEILING AS REQUIRED

ROOM IDENTIFICATION		
ROOM NUMBER	ROOM NAME	CEILING HEIGHT
4E01	WAITING	9'-0"
4E01A	CONSULT	8'-0"
4E02	ANES. EXAM	8'-0"
4E02A	RESIDENTS	8'-0"
4E02B	ANES. EXAM	8'-0"
4E02C	CASE MGRS	8'-0"
4E02D	ANES. EXAM	8'-0"
4CE02	CORRIDOR	8'-0"
4E03	SLEEP	8'-0"
4E03A	CONFERENCE	9'-0"
4S02	ELEC	8'-0"
4CS03	CORRIDOR	8'-0"
4S04	LOUNGE	8'-0"
4S06	MENS	8'-0"
4S07	WOMENS	8'-0"
4CS04	CORRIDOR	9'-0"
4S09	CHASE	8'-0"
4S11	COM	8'-0"
4S13	ELEC	8'-0"
4S14	SOILED	8'-0"
4S15	HAC	8'-0"
4S16	CLEAN	8'-0"
4S19	ANTE	8'-0"
4S21	ISOLATION	8'-0"
4S22	ST	8'-0"
4S23	BARIASTRICS	9'-0"
4S24	NOURISH	8'-0"
4S25	STOR	9'-0"
4S26	NURSES STATION	9'-0"
4S26A	DICTATION	9'-0"
4S27	MEDS	8'-0"
4S28	SUPPLIES	8'-0"
4S29	STOR	9'-0"
4S30	PACU ALCOVES	9'-0"

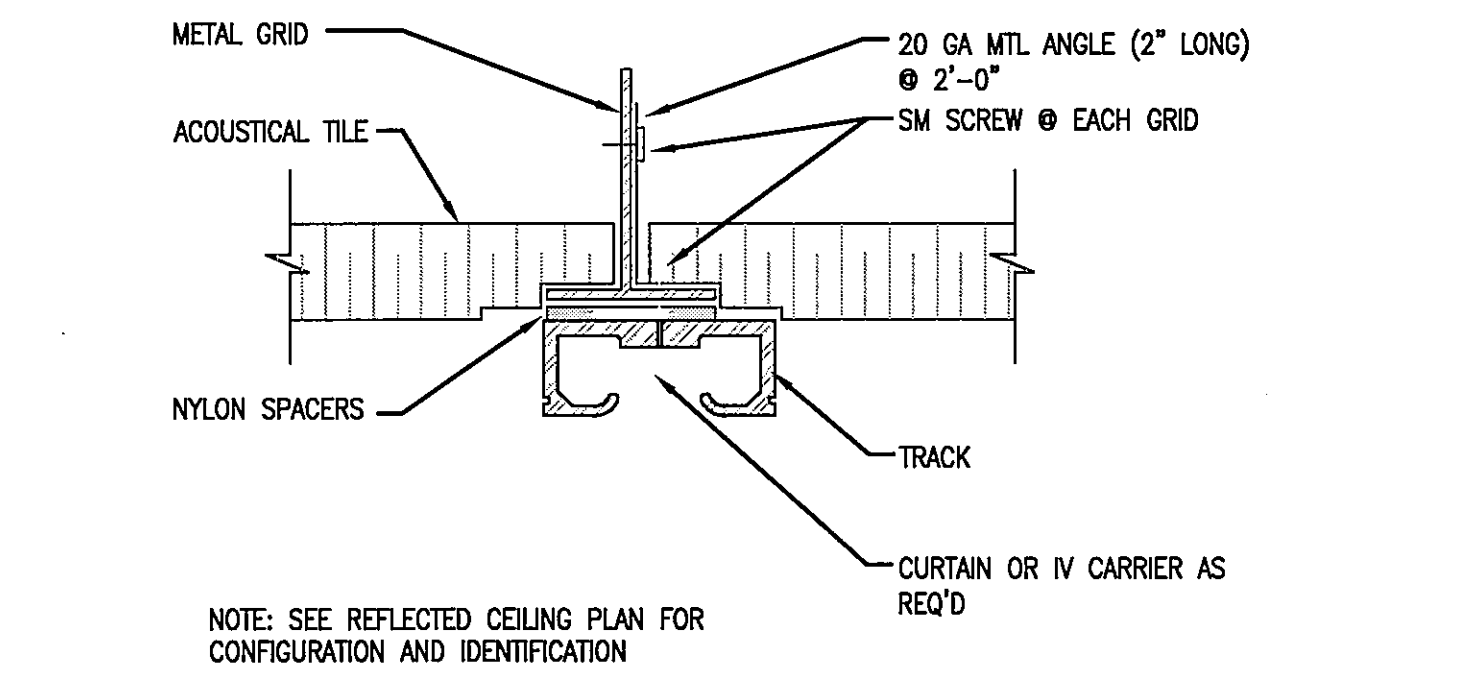


KEY PLAN  
NOT TO SCALE  
FULLY SPRINKLERED BUILDING  
BID DOCUMENTS

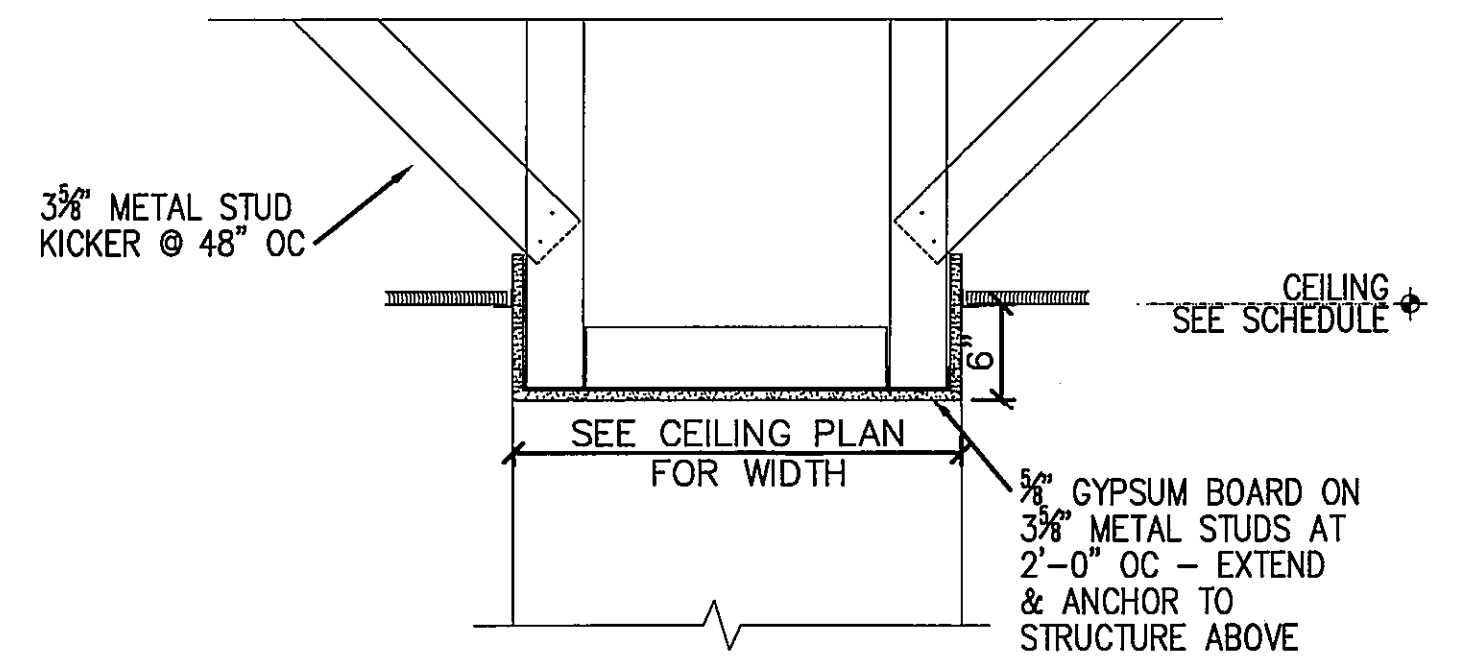
Office of  
Construction  
and Facilities  
Management



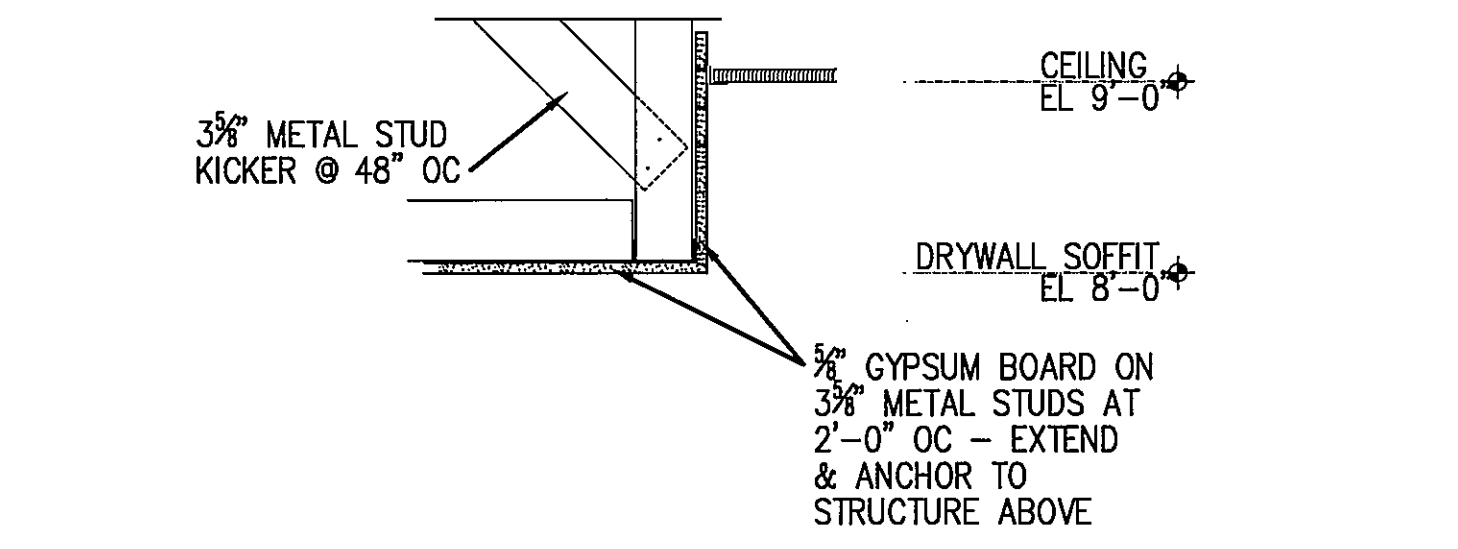
FOURTH FLOOR CEILING PLAN  
1/8" = 1'-0"



CURTAIN TRACK DETAIL  
1" = 1'-0"



SOFFIT DETAIL  
1" = 1'-0"

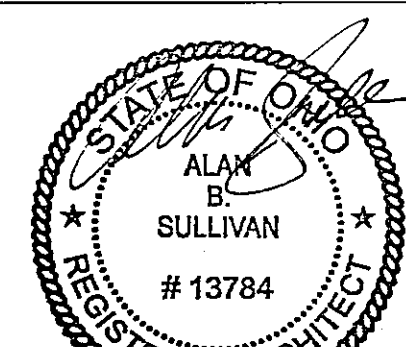


SOFFIT DETAIL  
1" = 1'-0"

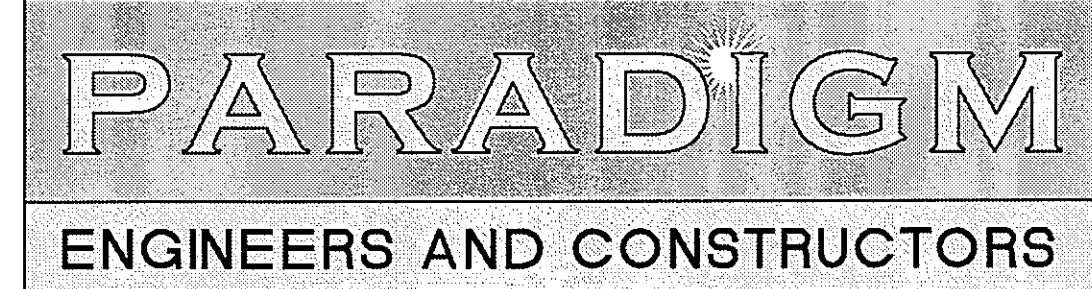
CONSULTANTS:



700 BROADWAY STREET  
CINCINNATI, OH 45202-8010  
PHONE: 513.621.6211  
FAX: 513.621.6530



ARCHITECT/ENGINEERS:



PO BOX 436223 Louisville, Kentucky 40253 - PH: 502.339.8511 - www.paradigmusa.com

Drawing Title:  
FOURTH FLOOR CEILING PLAN

Approved: Project Director

Project Title:  
SURGICAL SUPPORT AND LOCKERS

Location:  
IOWA CITY VAMC  
601 HIGHWAY 6 WEST, IOWA CITY, IOWA 52246-2208

Date:  
07-12-12

Checked:  
SULLIVAN

Drawn:  
SAID/BRUNNER

Project Number:  
636A8-11-011

Building Number:  
1

Drawing Number:  
1-A12