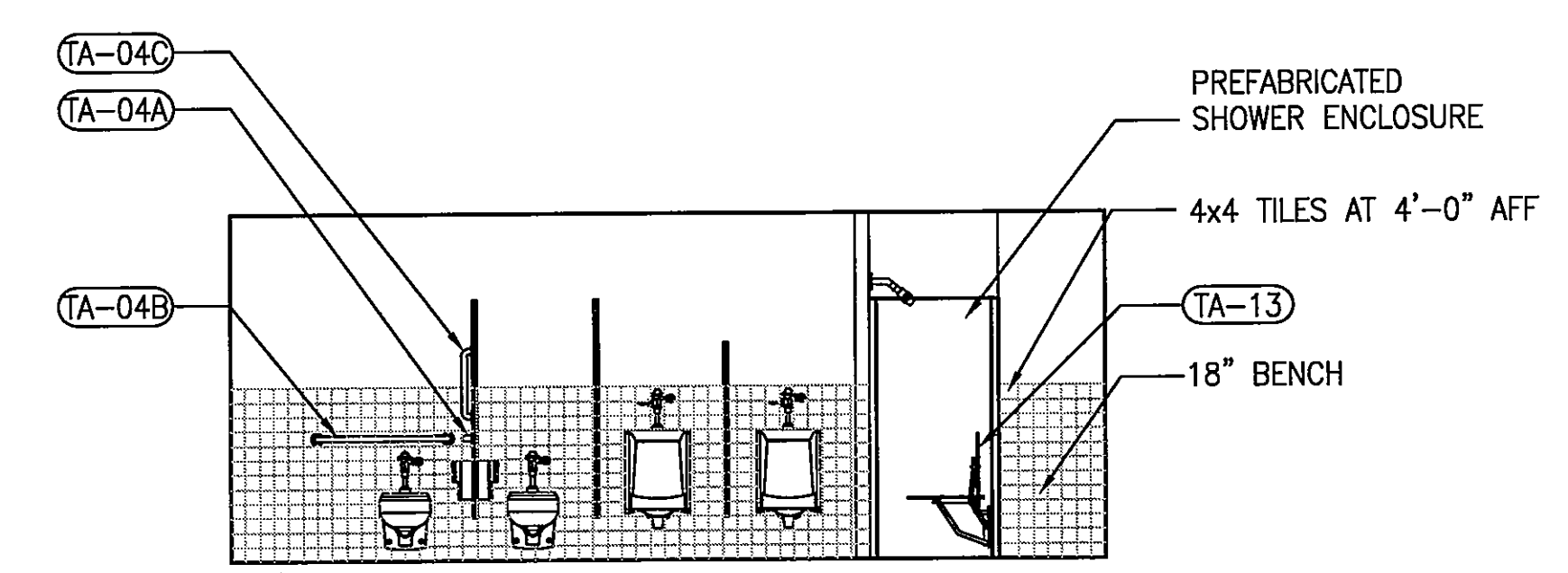
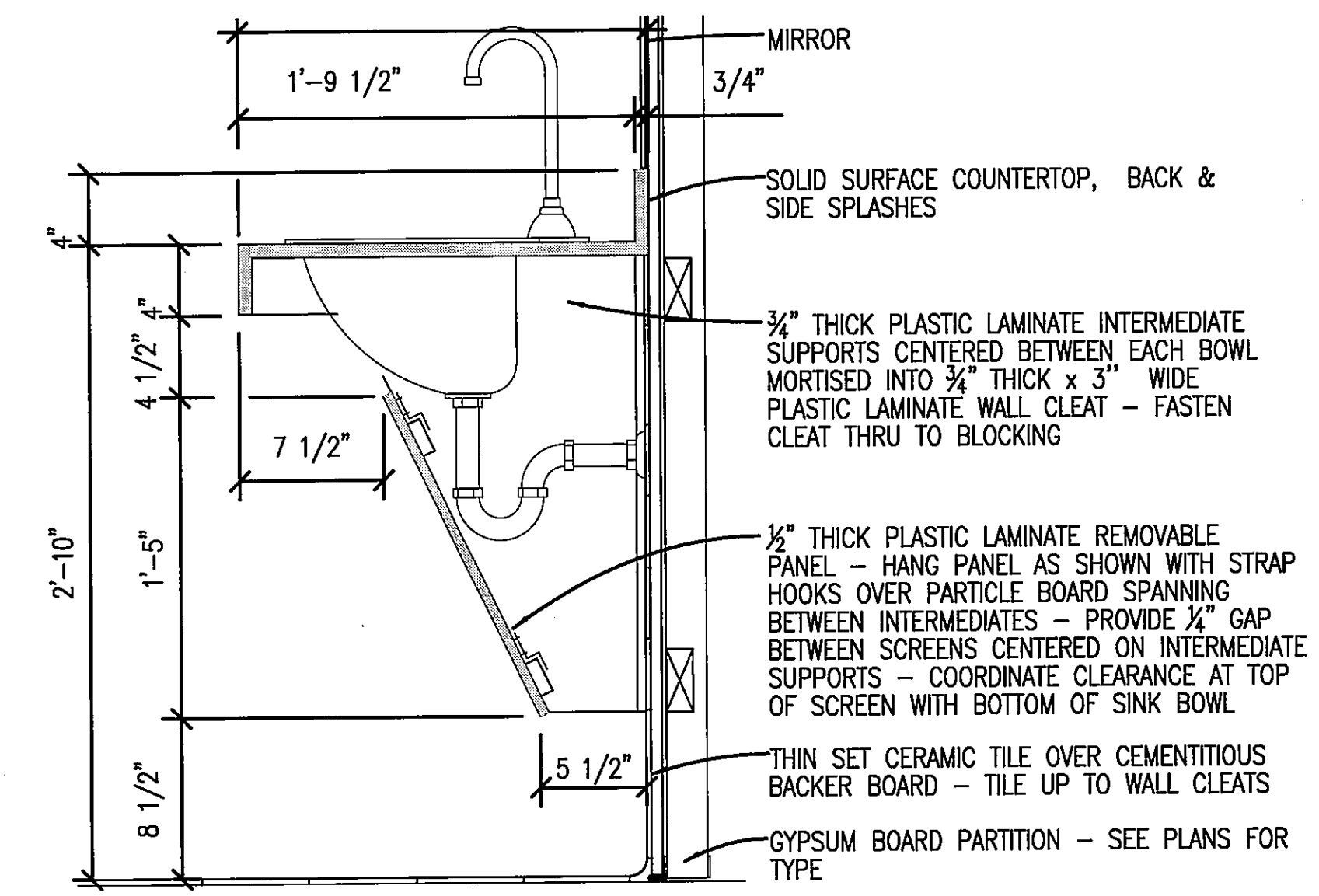


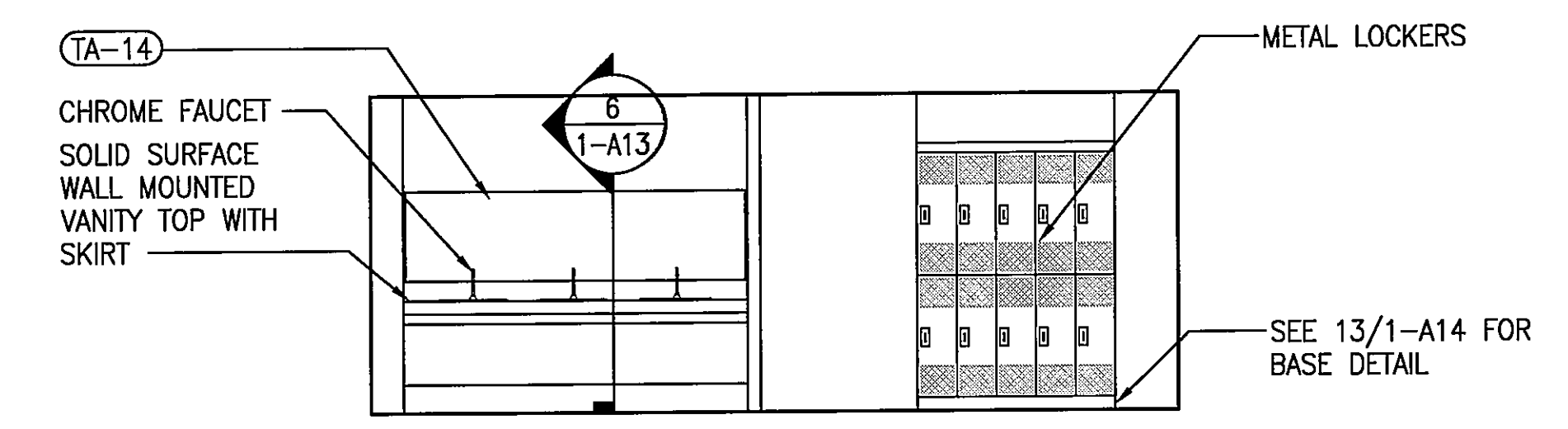
three inches = one foot
one and one half inches = one foot
one inch = one foot
three quarters inch = one foot
one half inch = one foot
one quarter inch = one foot
three eighths inch = one foot
one eighth inch = one foot



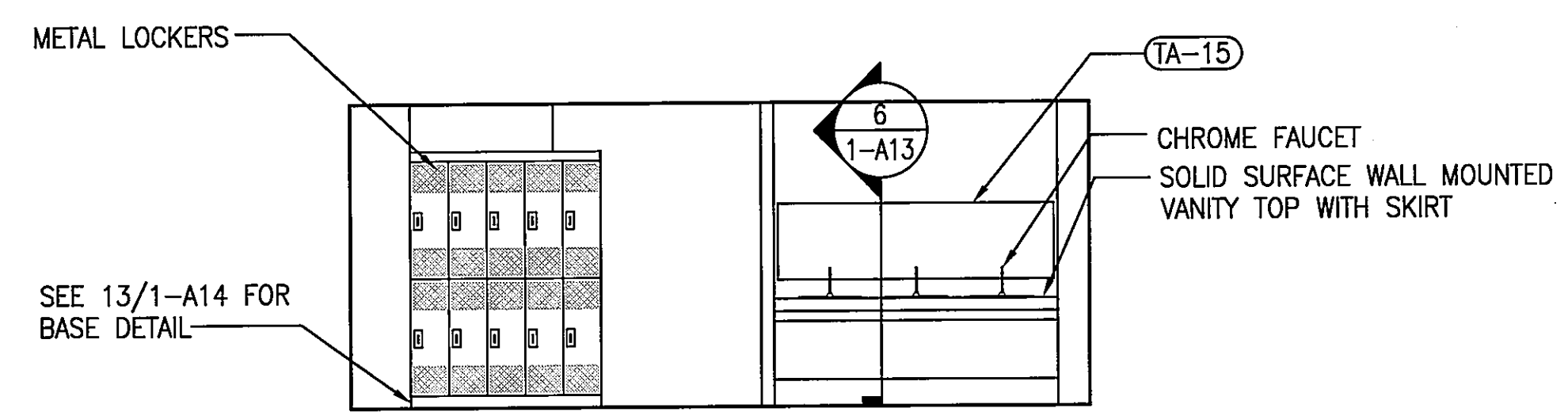
MEN'S BS01 TOILET WALL ELEVATION
1/4" = 1'-0"



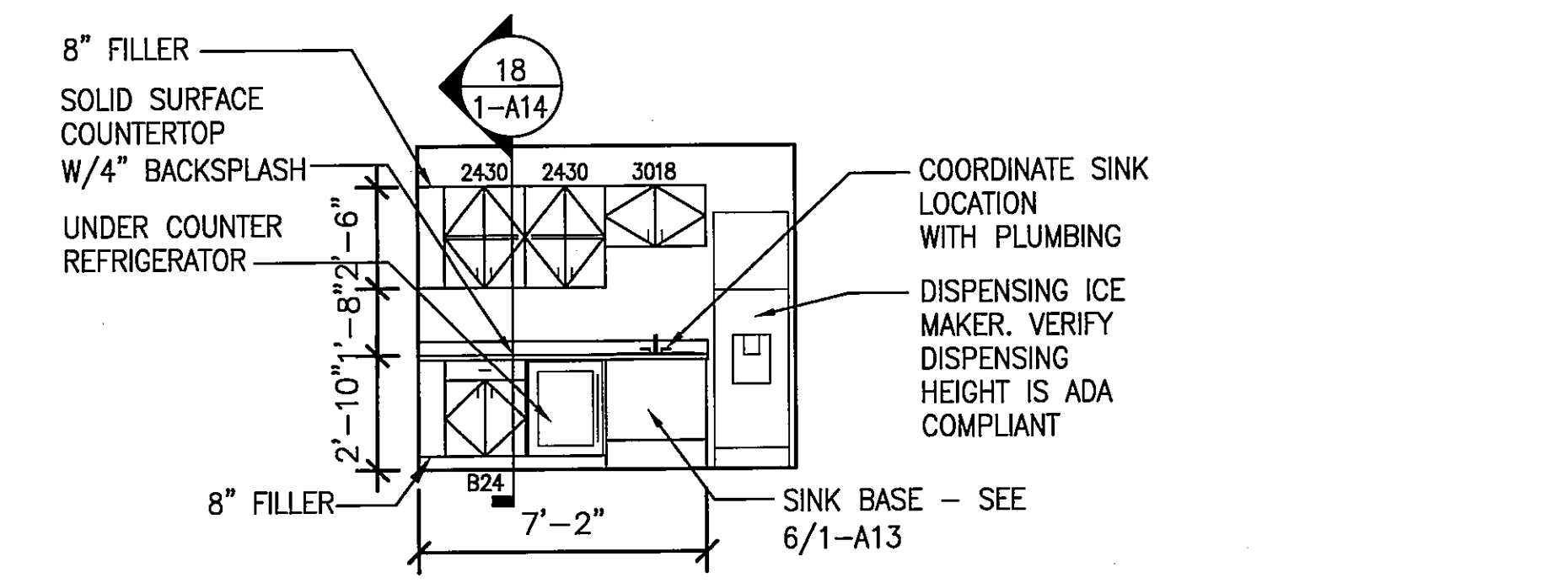
LAVATORY SECTION
1 1/2" = 1'-0"



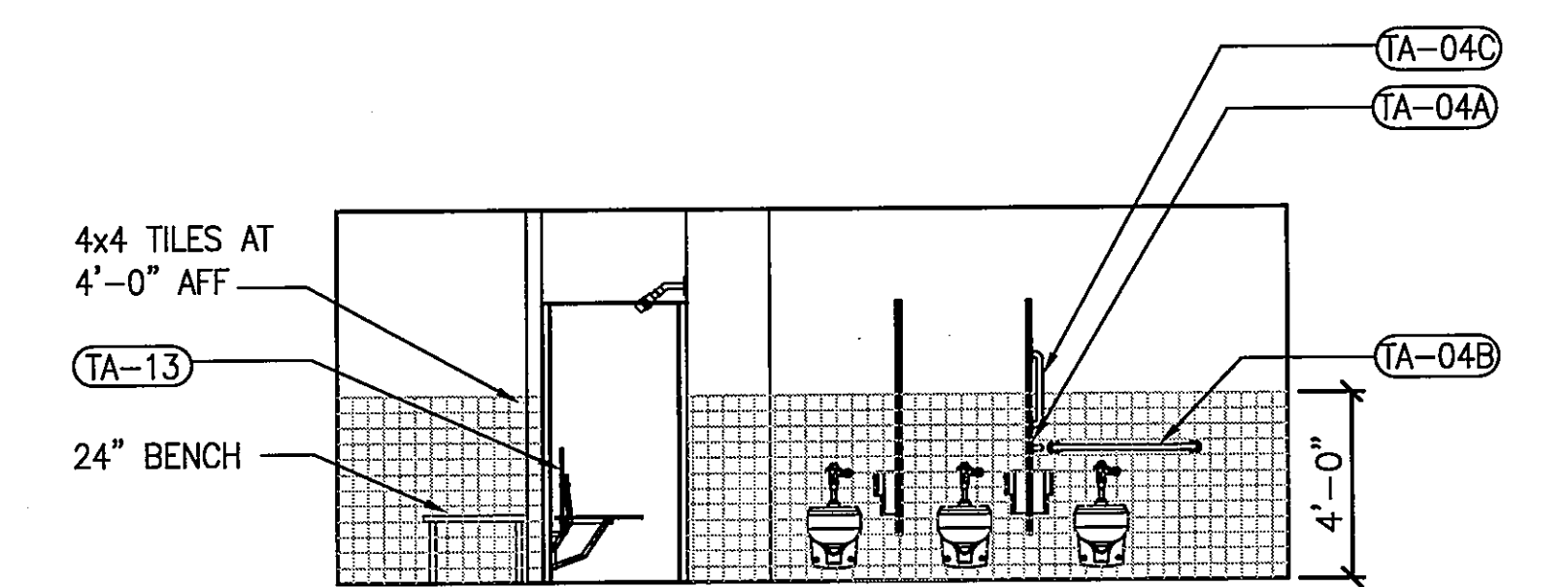
WOMEN'S 4S07 SINK WALL ELEVATION
1/4" = 1'-0"



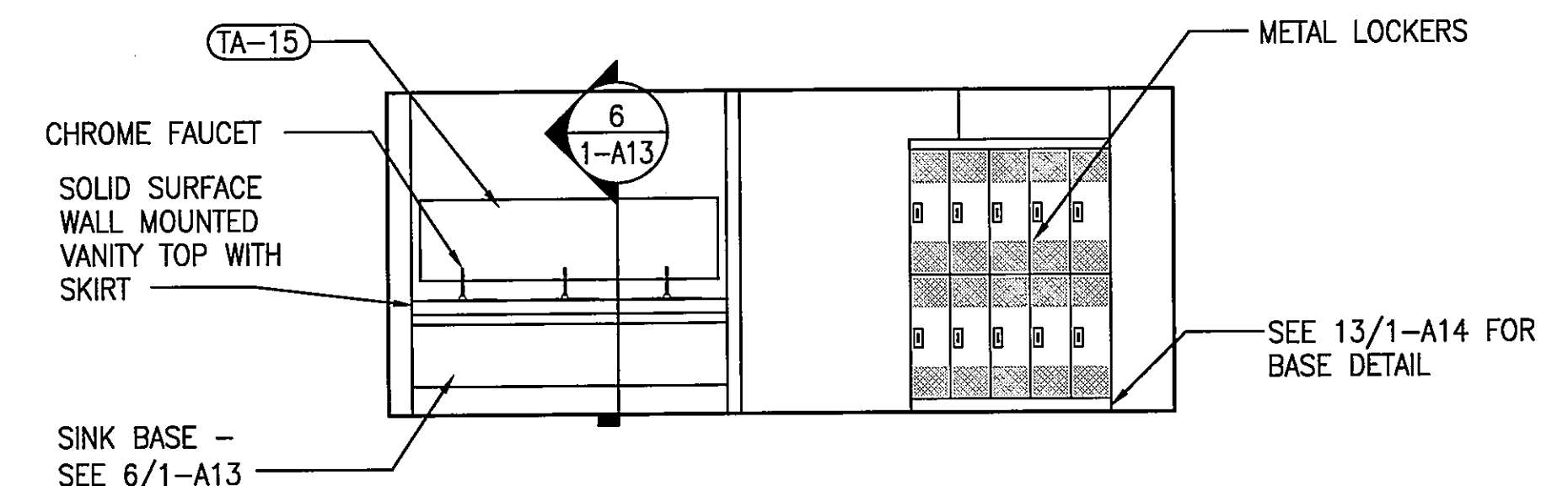
MEN'S BS01 SINK WALL ELEVATION
1/4" = 1'-0"



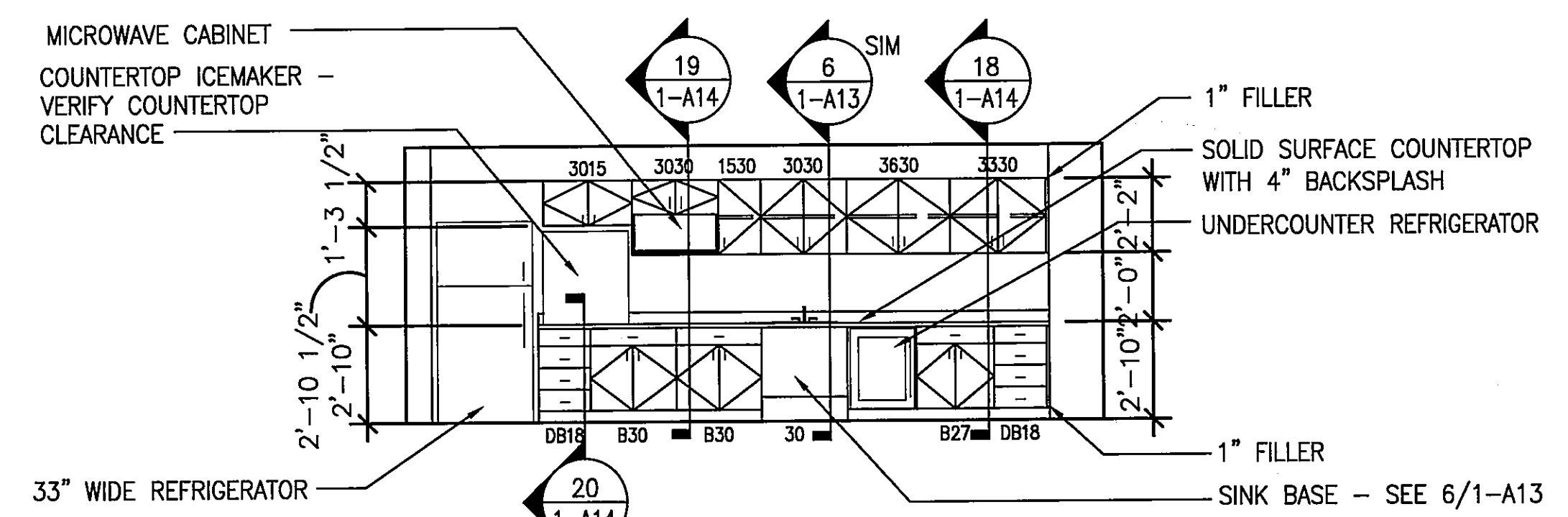
NOURISH ROOM ELEVATION
1/4" = 1'-0"



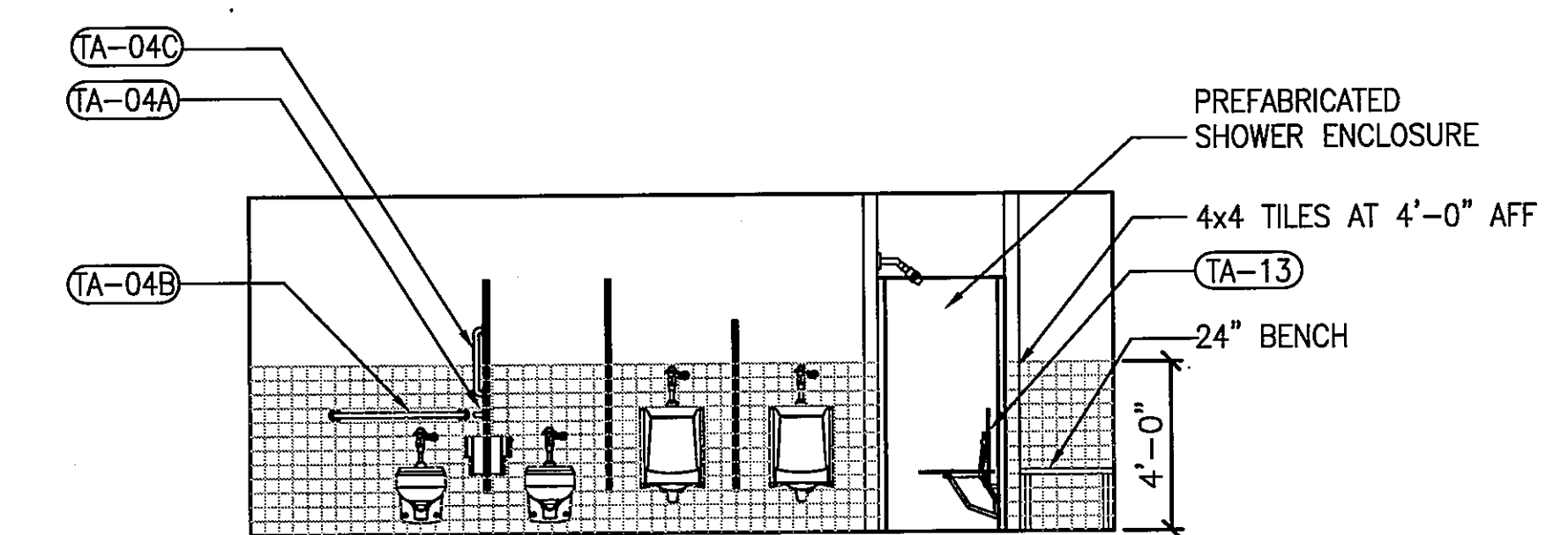
WOMEN'S 4S07 TOILET WALL ELEVATION
1/4" = 1'-0"



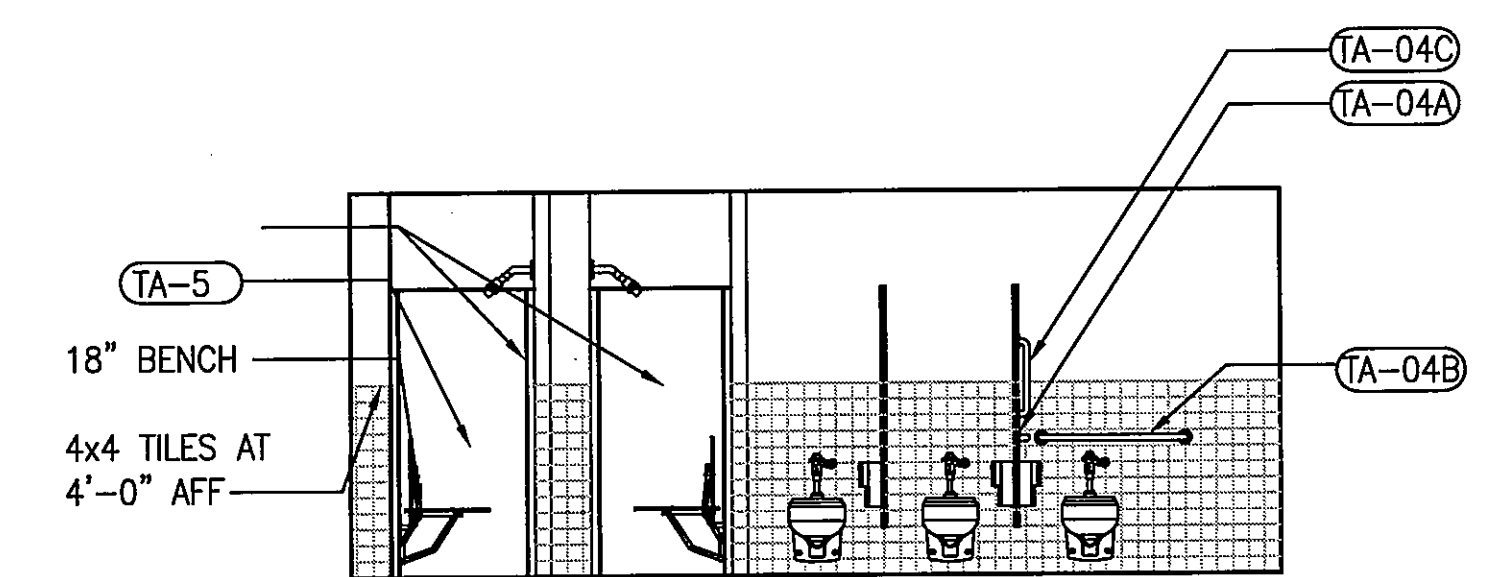
WOMEN'S BS02 SINK WALL ELEVATION
1/4" = 1'-0"



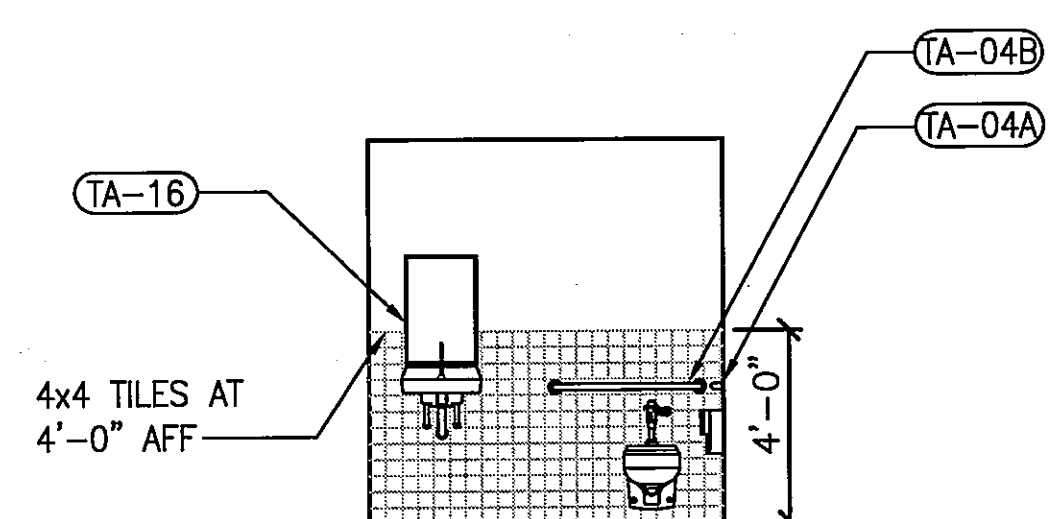
LOUNGE AREA ELEVATION
1/4" = 1'-0"



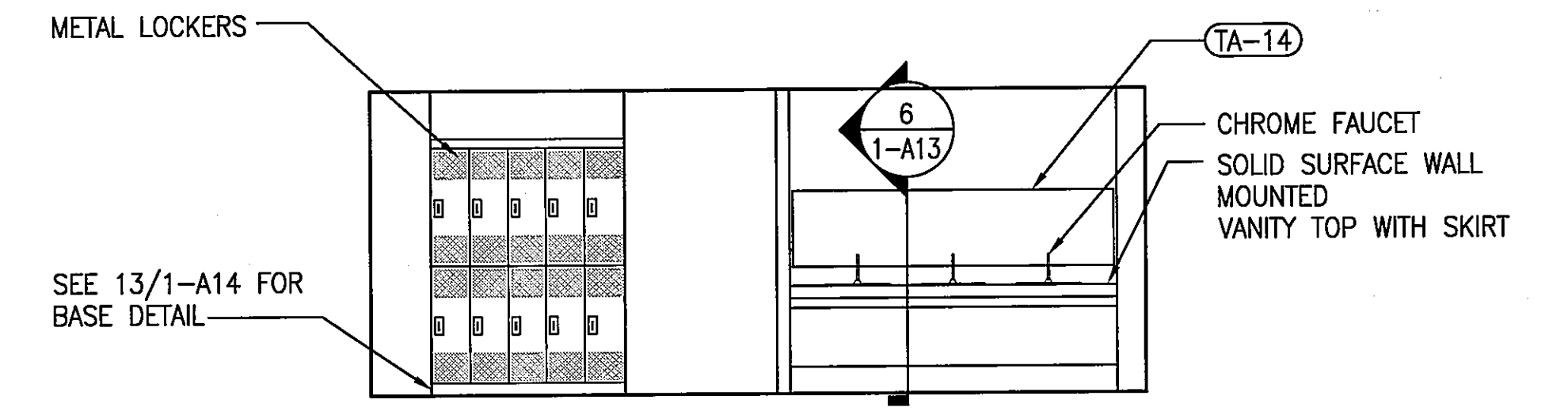
MEN'S 4S06 TOILET WALL ELEVATION
1/4" = 1'-0"



WOMEN'S BS02 TOILET WALL ELEVATION
1/4" = 1'-0"



RESTROOM 4S22 ELEVATION
1/4" = 1'-0"



MEN'S 4S06 SINK WALL ELEVATION
1/4" = 1'-0"

GENERAL NOTES

- A. SEE SHEET 1-A15 FOR TOILET ACCESSORY SCHEDULE
- B. IF WOOD BLOCKING IS REQUIRED, IT MUST BE FIRE RETARDANT TREATED (FRT).

FULLY SPRINKLERED BUILDING
BID DOCUMENTS

Revisions	Date	CONSULTANTS: KZF DESIGN 700 BROADWAY STREET CINCINNATI, OH 45202-6010 PHONE: 513.621.6211 FAX: 513.621.6530		ARCHITECT/ENGINEERS: PARADIGM ENGINEERS AND CONSTRUCTORS PO BOX 436223 Louisville, Kentucky 40253 - PH: 502.339.8511 - www.paradigmusa.com	Drawing Title: INTERIOR ELEVATIONS	Approved Project Director	Project Title: SURGICAL SUPPORT AND LOCKERS	Project Number: 636A8-II-011 Building Number: 1 Drawing Number: 1-A13	Location: IOWA CITY VAMC 651 HICKMAN ST WEST, IOWA CITY, IOWA 52240-2208	Date: 07-13-12	Checked: SULLIVAN	Drawn: SAID/BRUNNER	Office of Construction and Facilities Management Department of Veterans Affairs