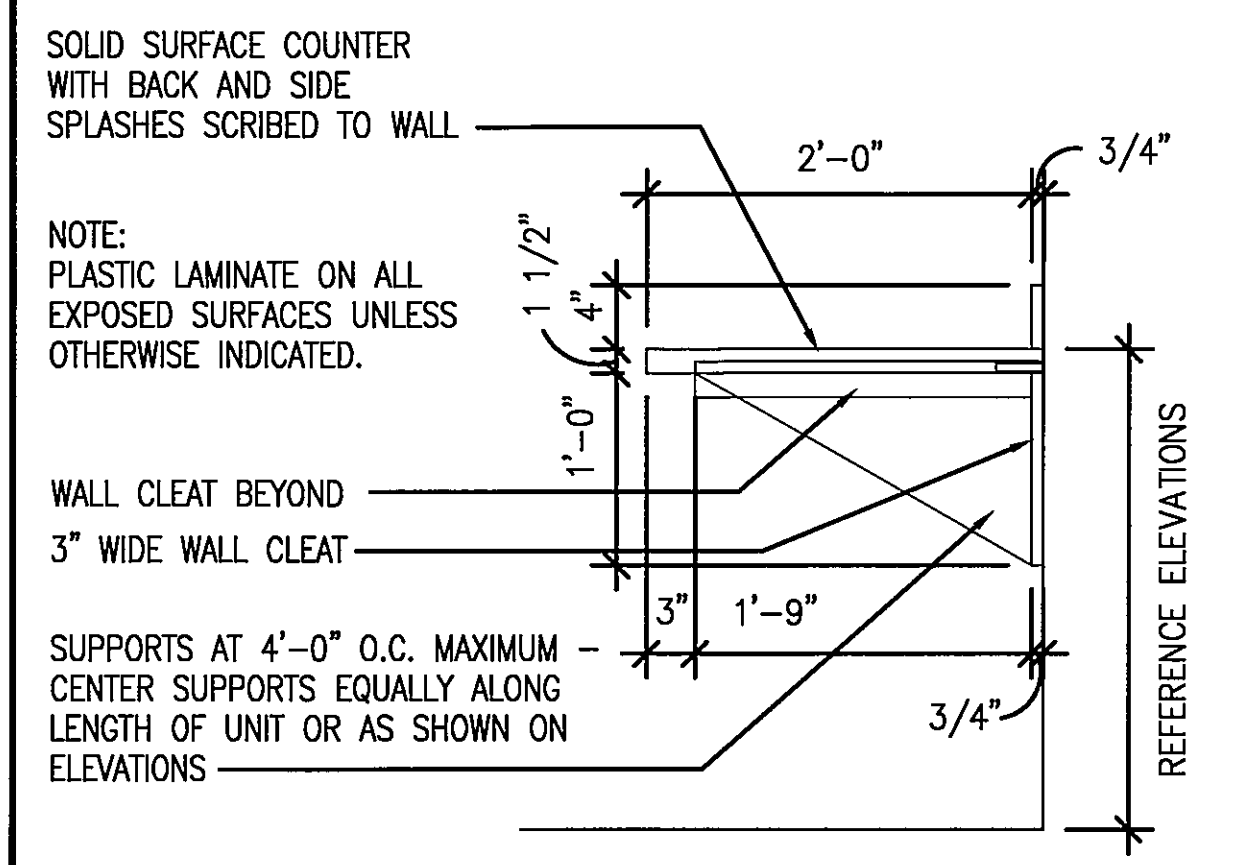
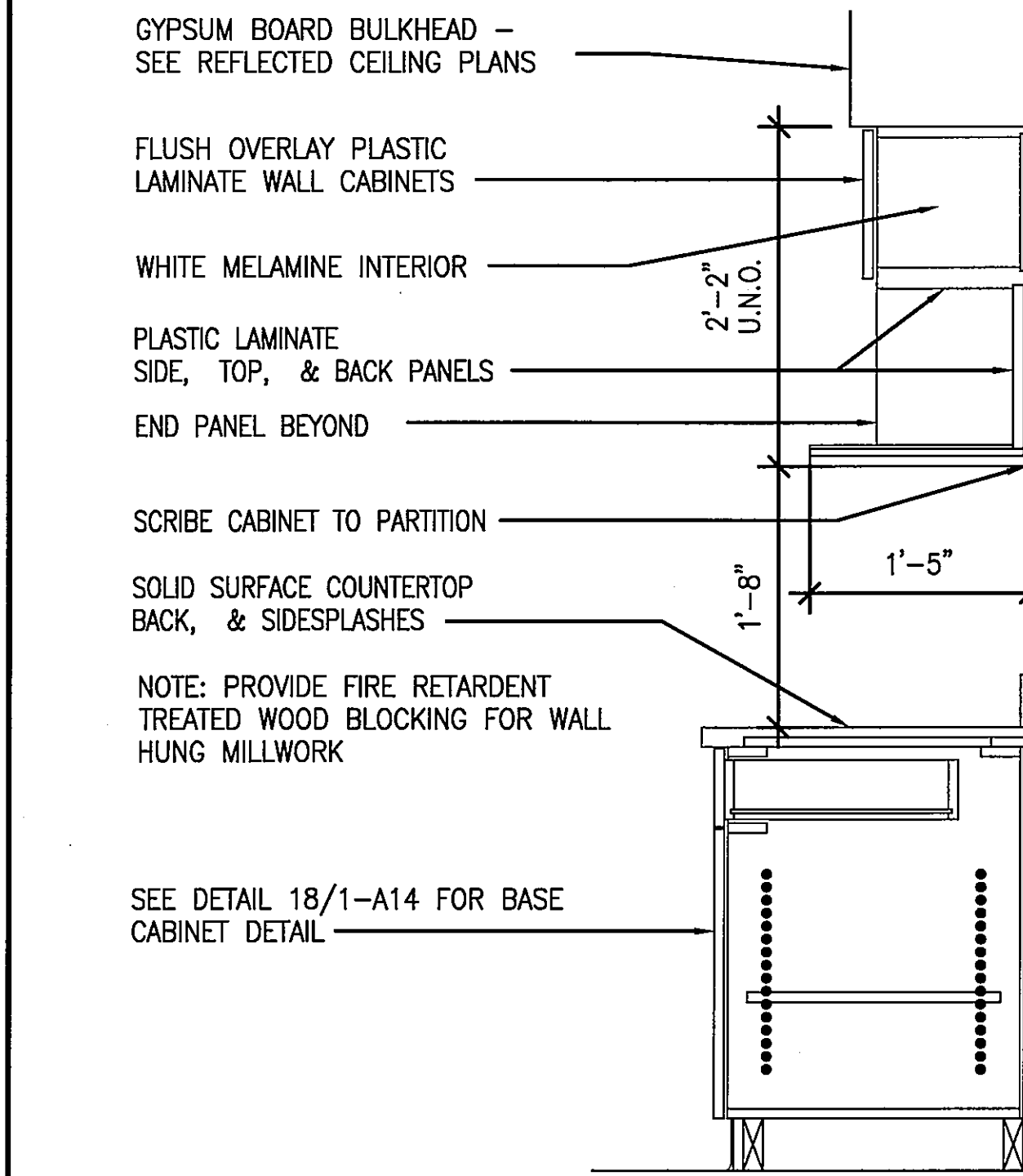


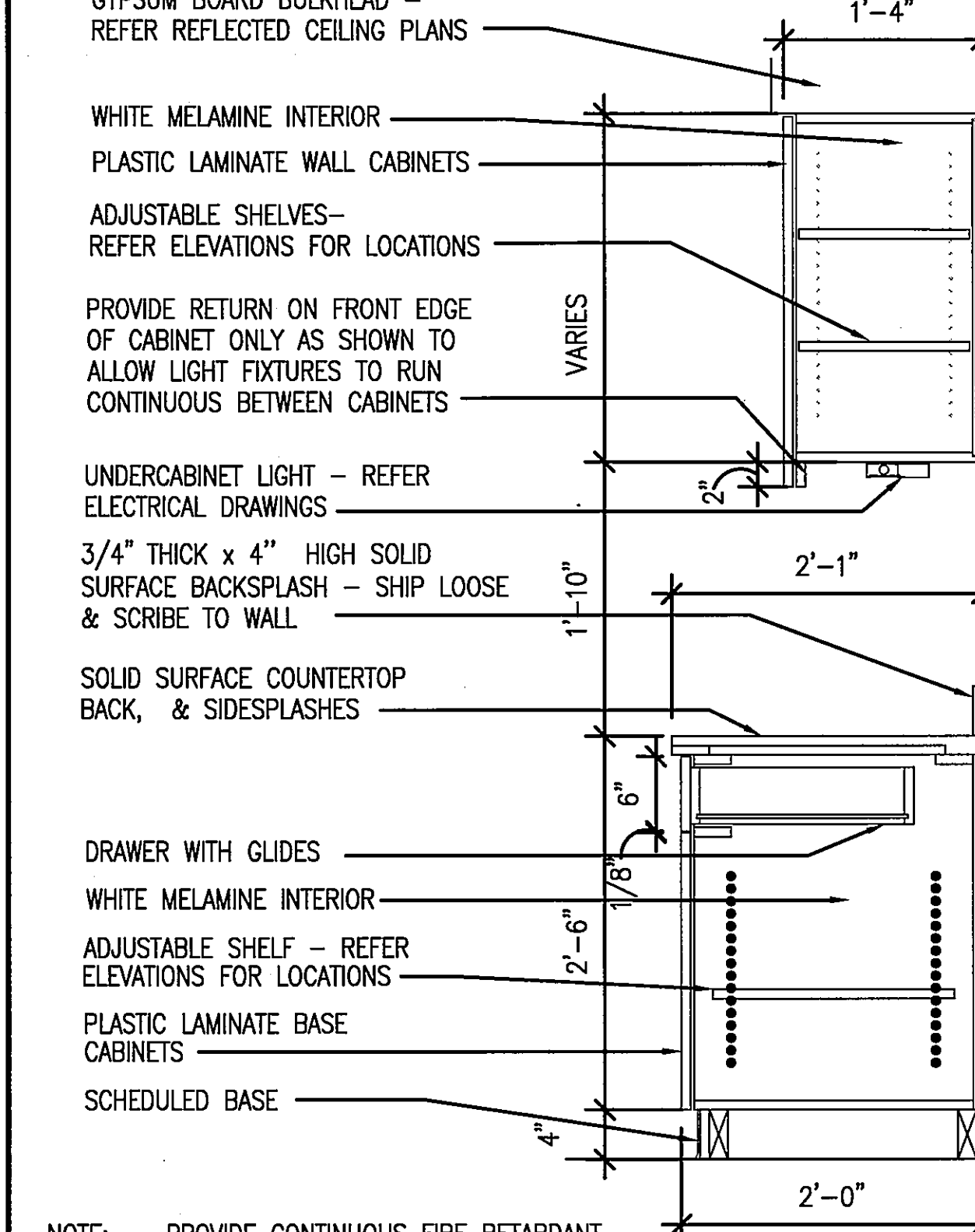
three inches = one foot
one and one half inches = one foot
one inch = one foot
three quarters inch = one foot
one half inch = one foot
three eighths inch = one foot
one quarter inch = one foot
one eighth inch = one foot



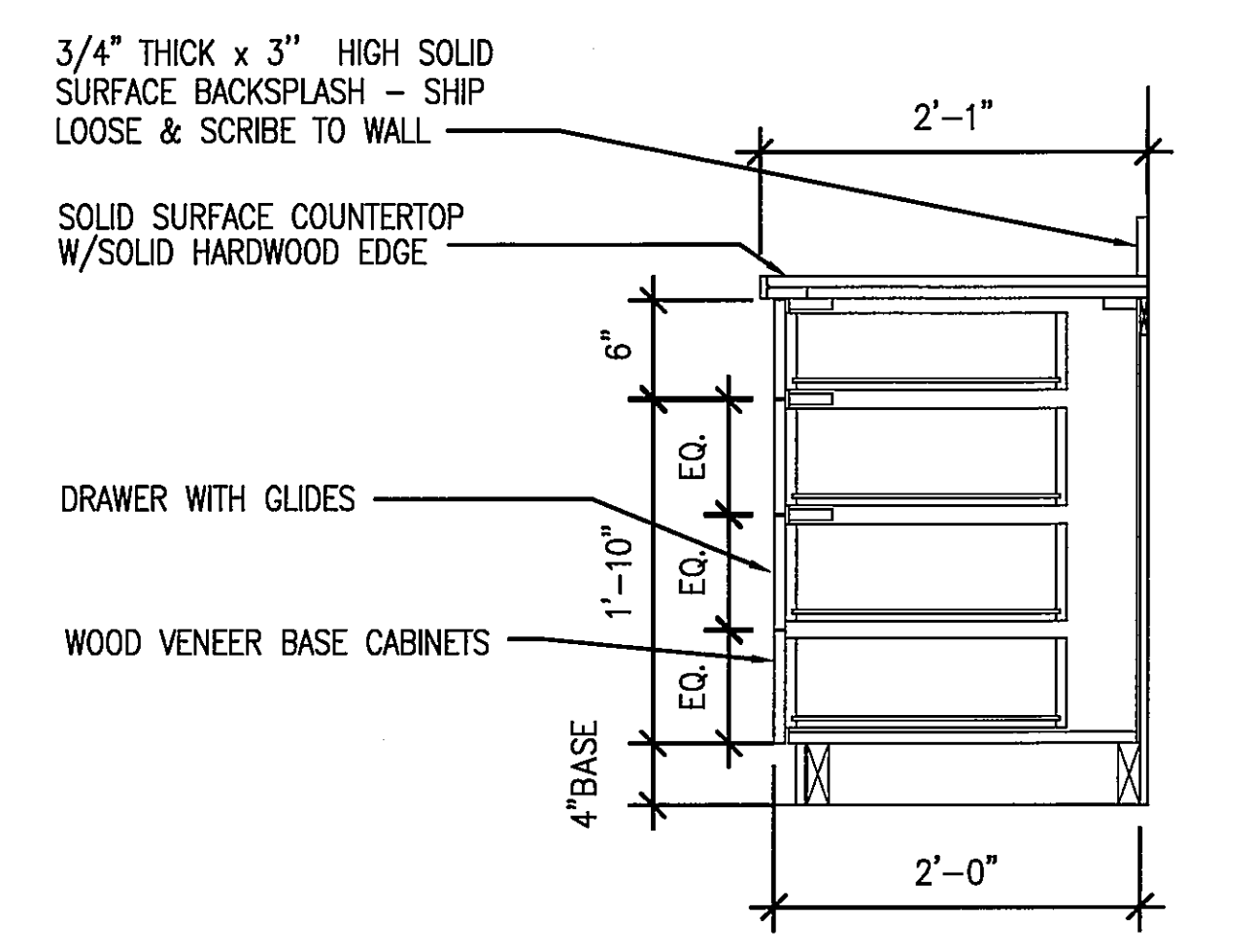
COUNTER DETAIL
1'-1-0"



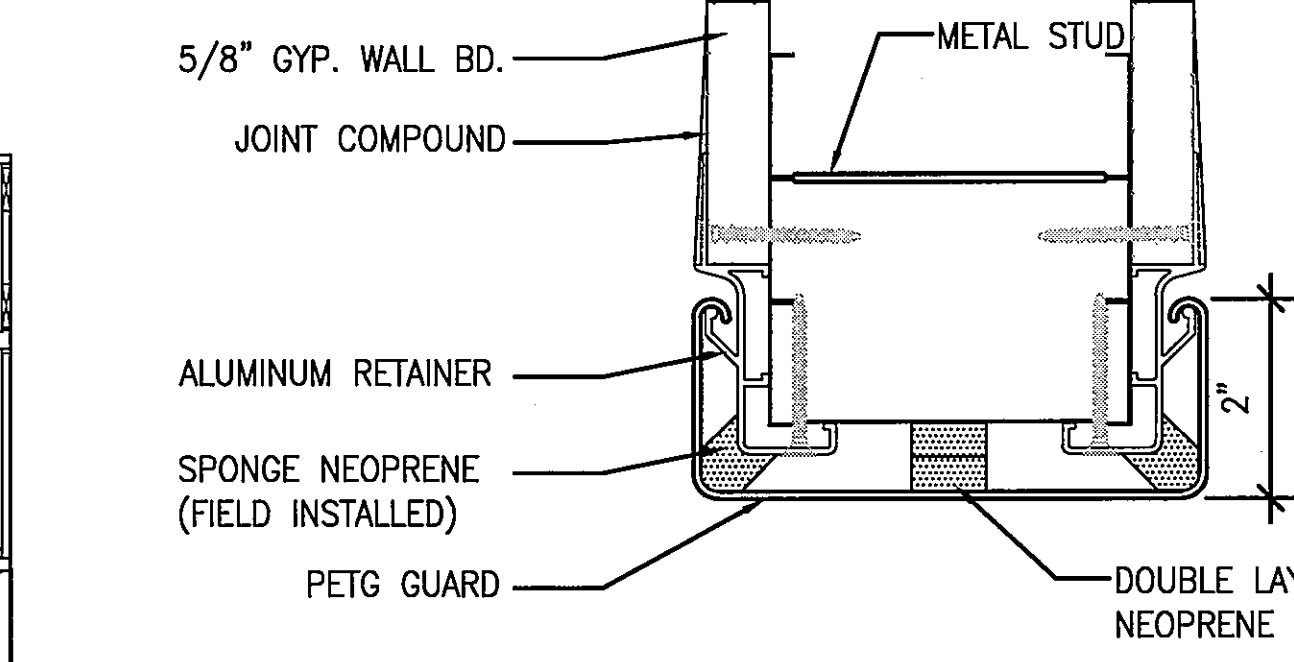
TYPICAL WALL CABINET W/ MICROWAVE SHELF
1'-1-0"



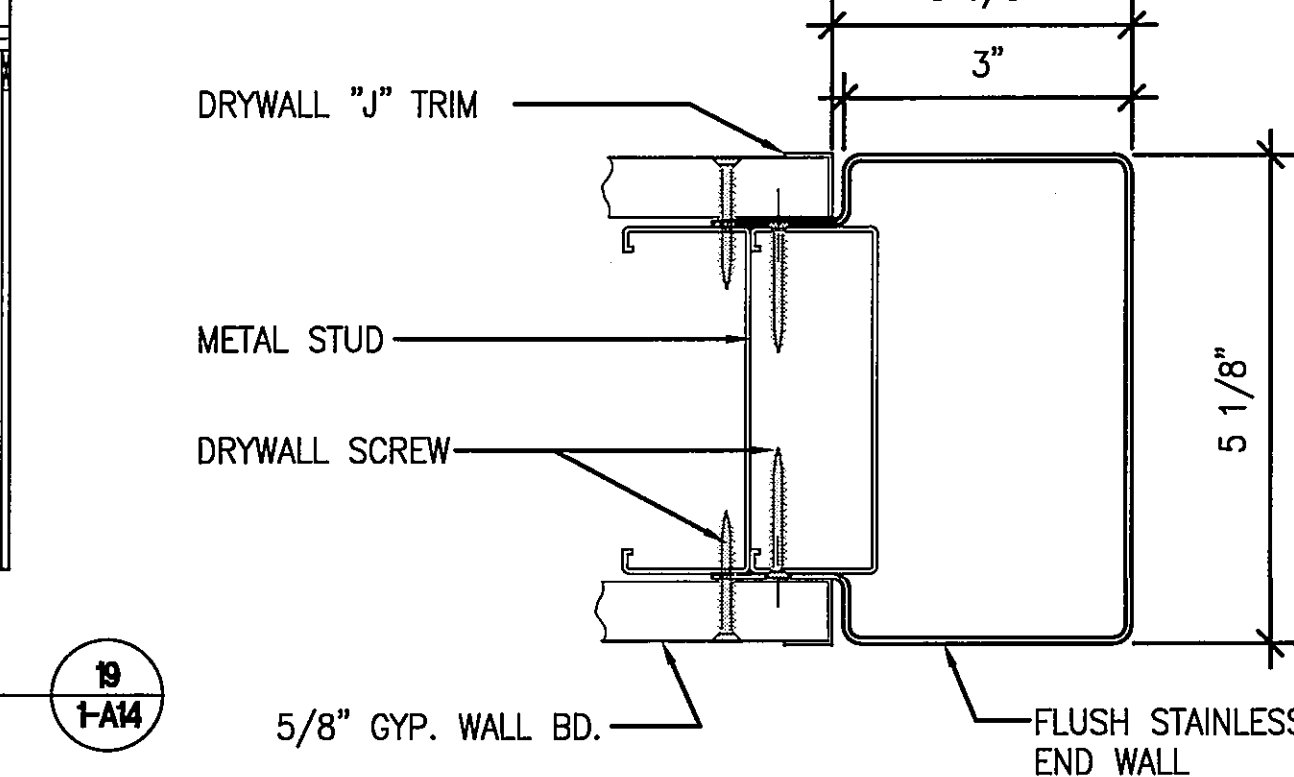
TYPICAL BASE AND WALL CABINET
1'-1-0"



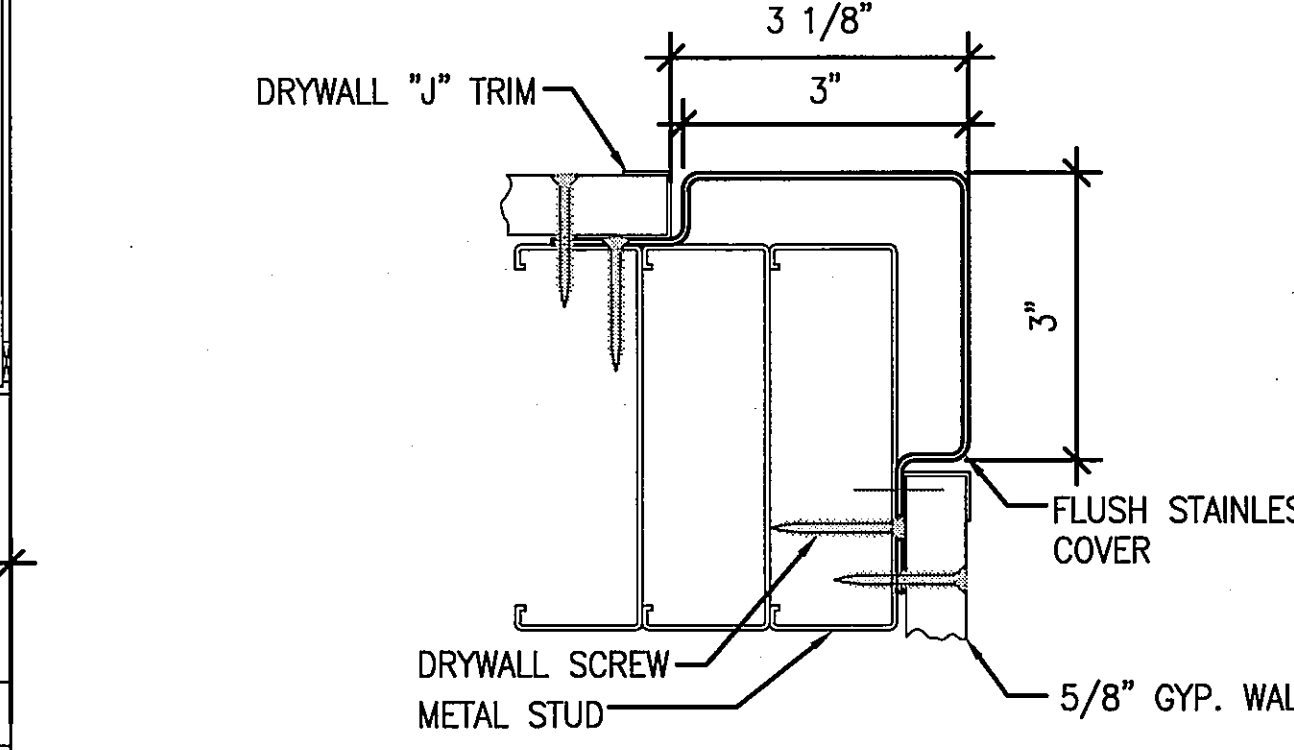
BASE CABINET DETAIL
1'-1-0"



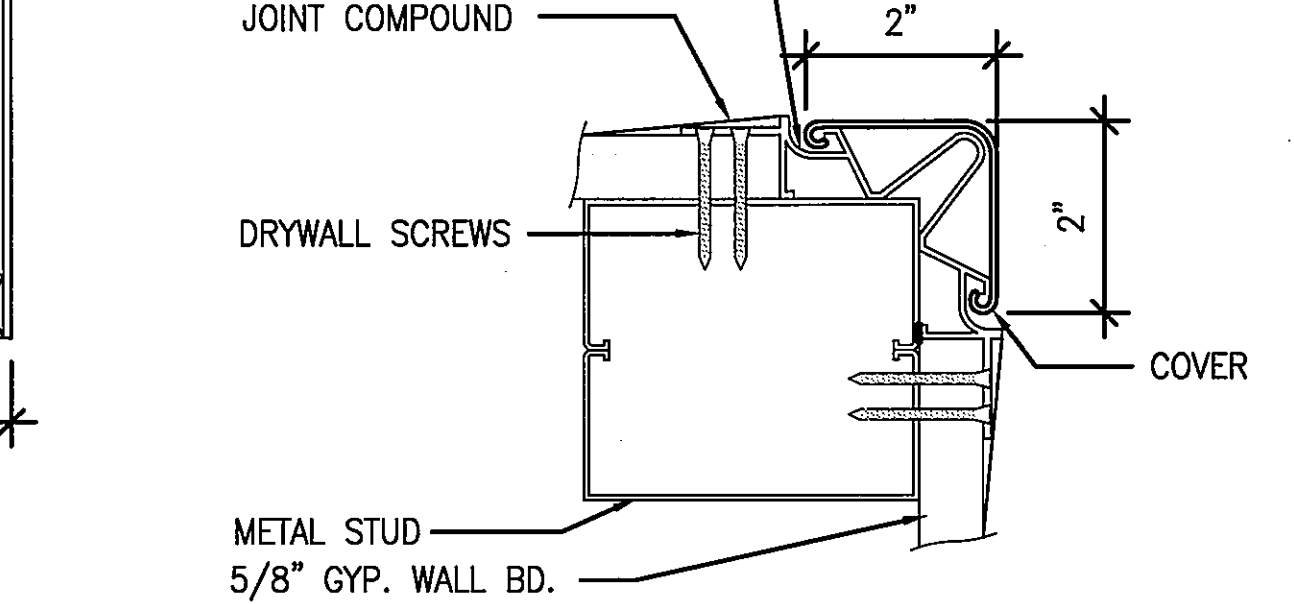
PETG 135 DEGREE CORNERGUARD DETAIL - FLUSH MNT.
8'-1-0"



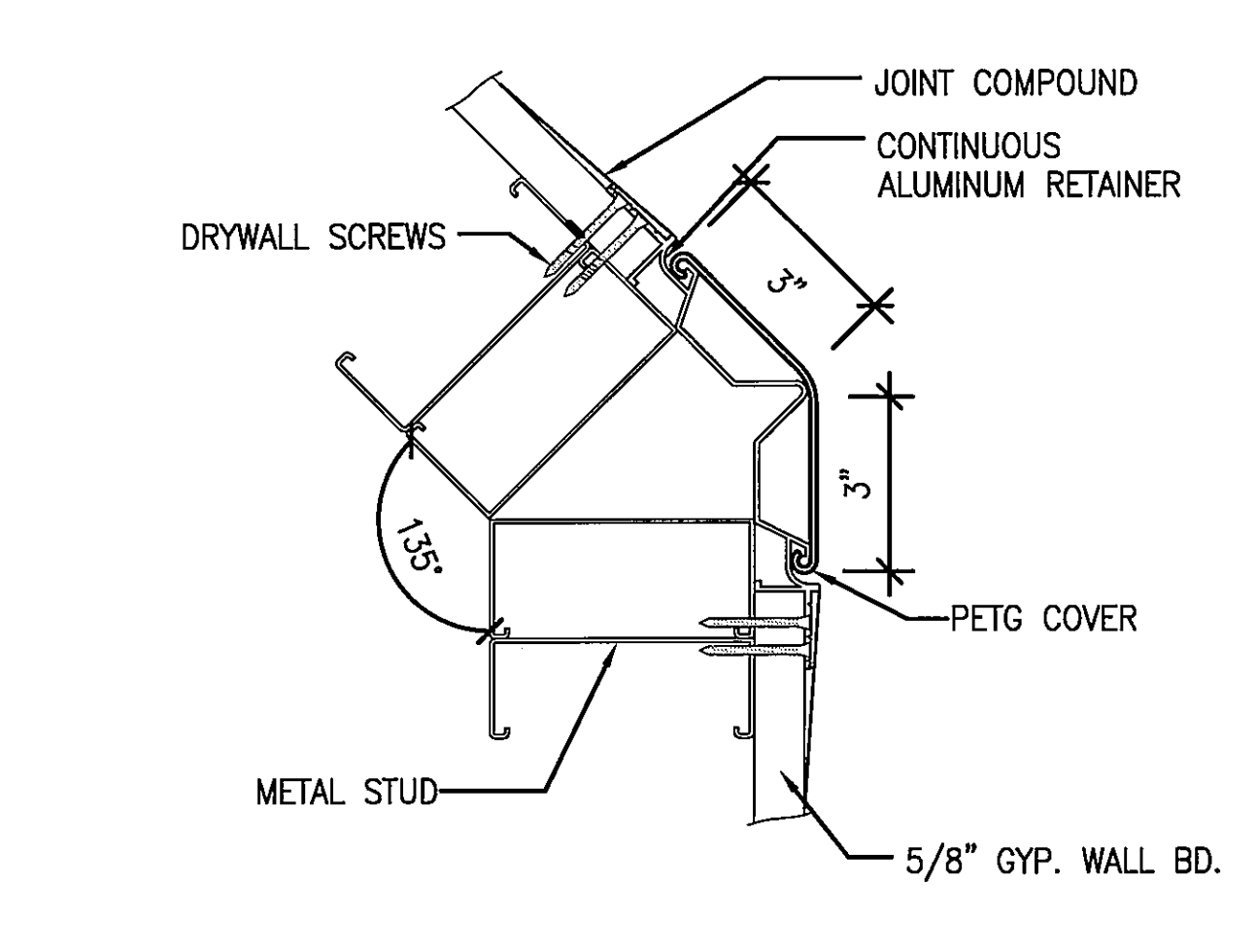
PETG END WALL GUARD DETAIL - FLUSH MNT.
8'-1-0"



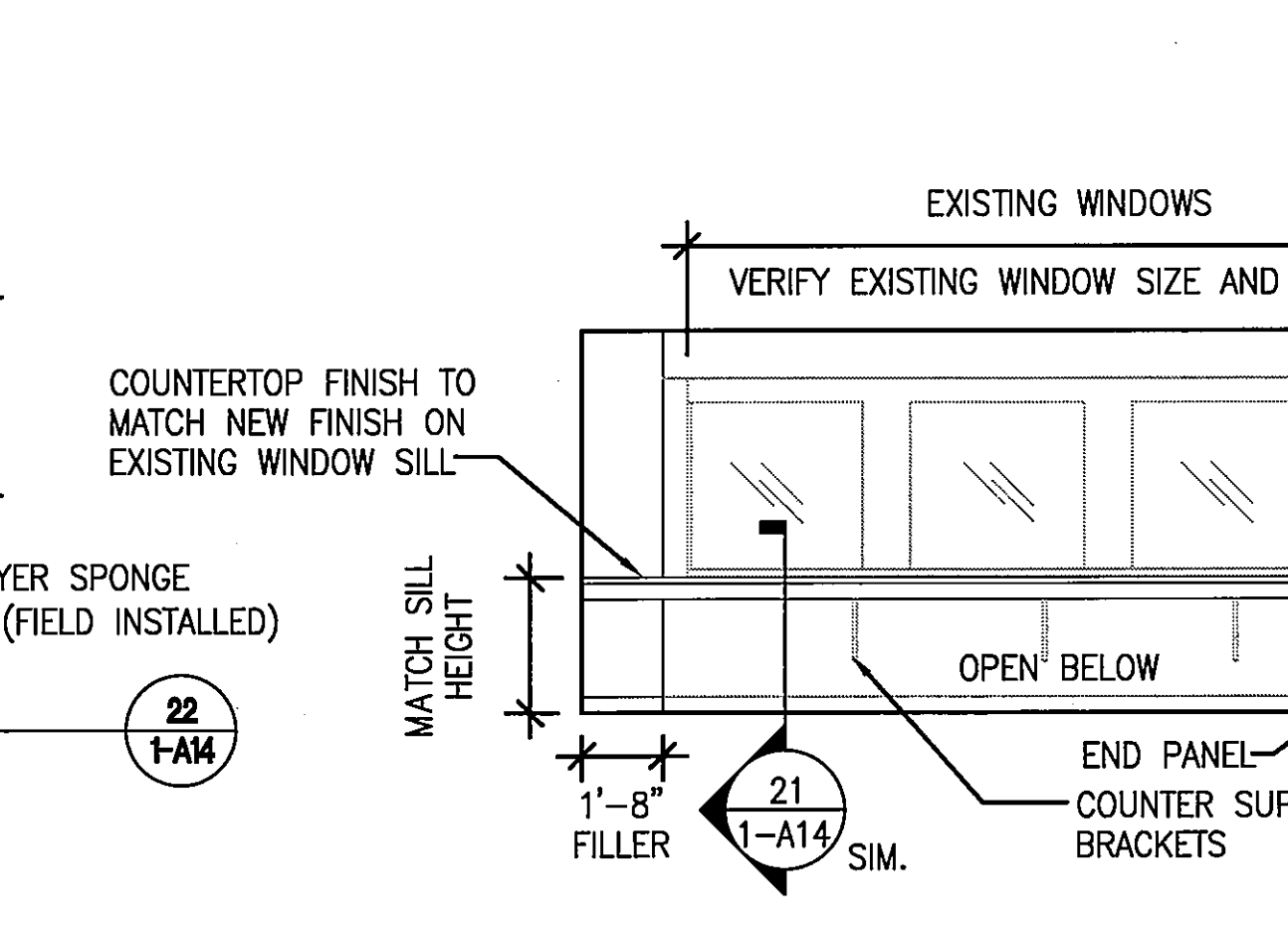
STAINLESS STEEL END GUARD DETAIL - FLUSH MNT.
8'-1-0"



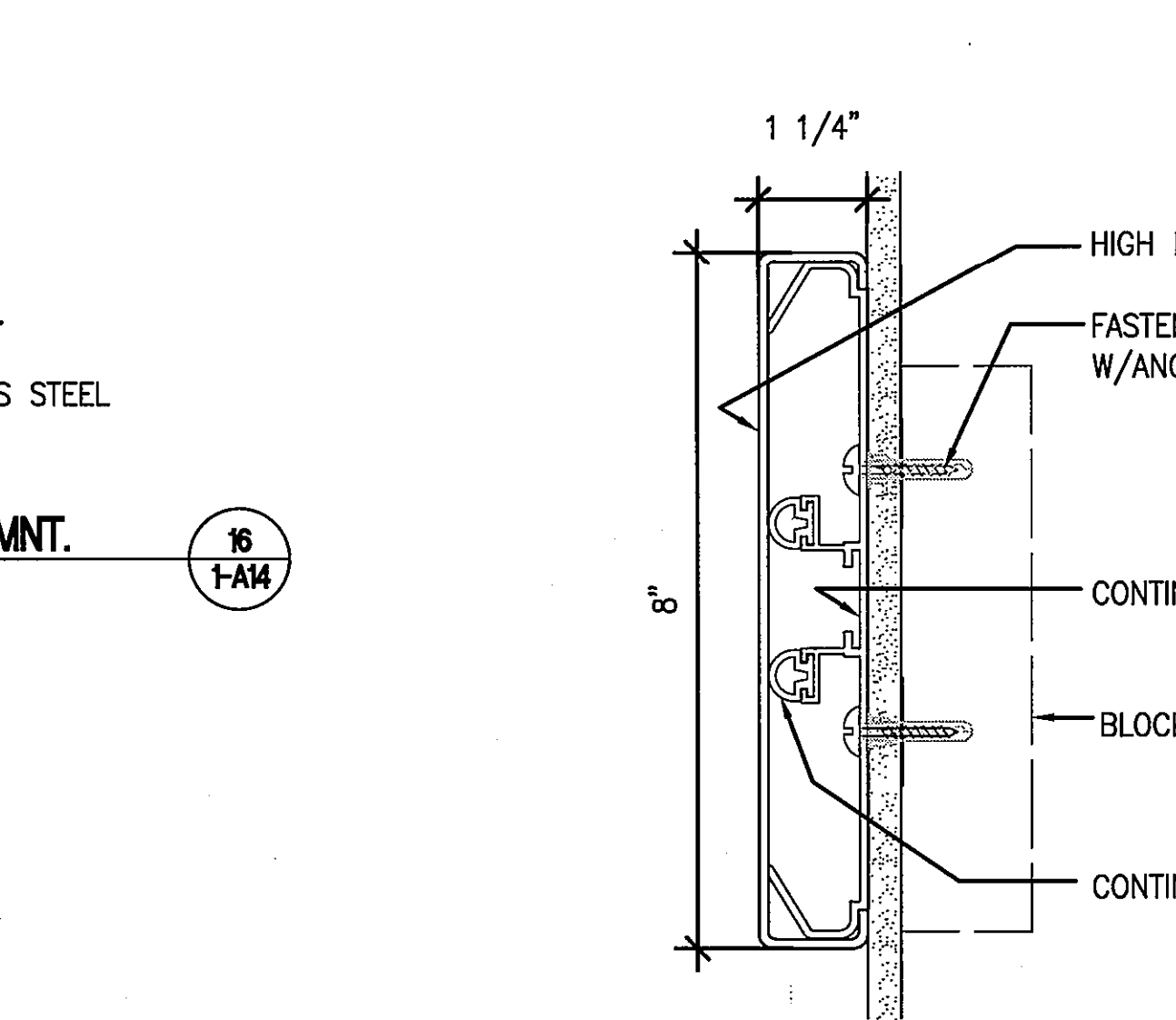
STAINLESS STEEL CORNER GUARD DETAIL - FLUSH MNT.
8'-1-0"



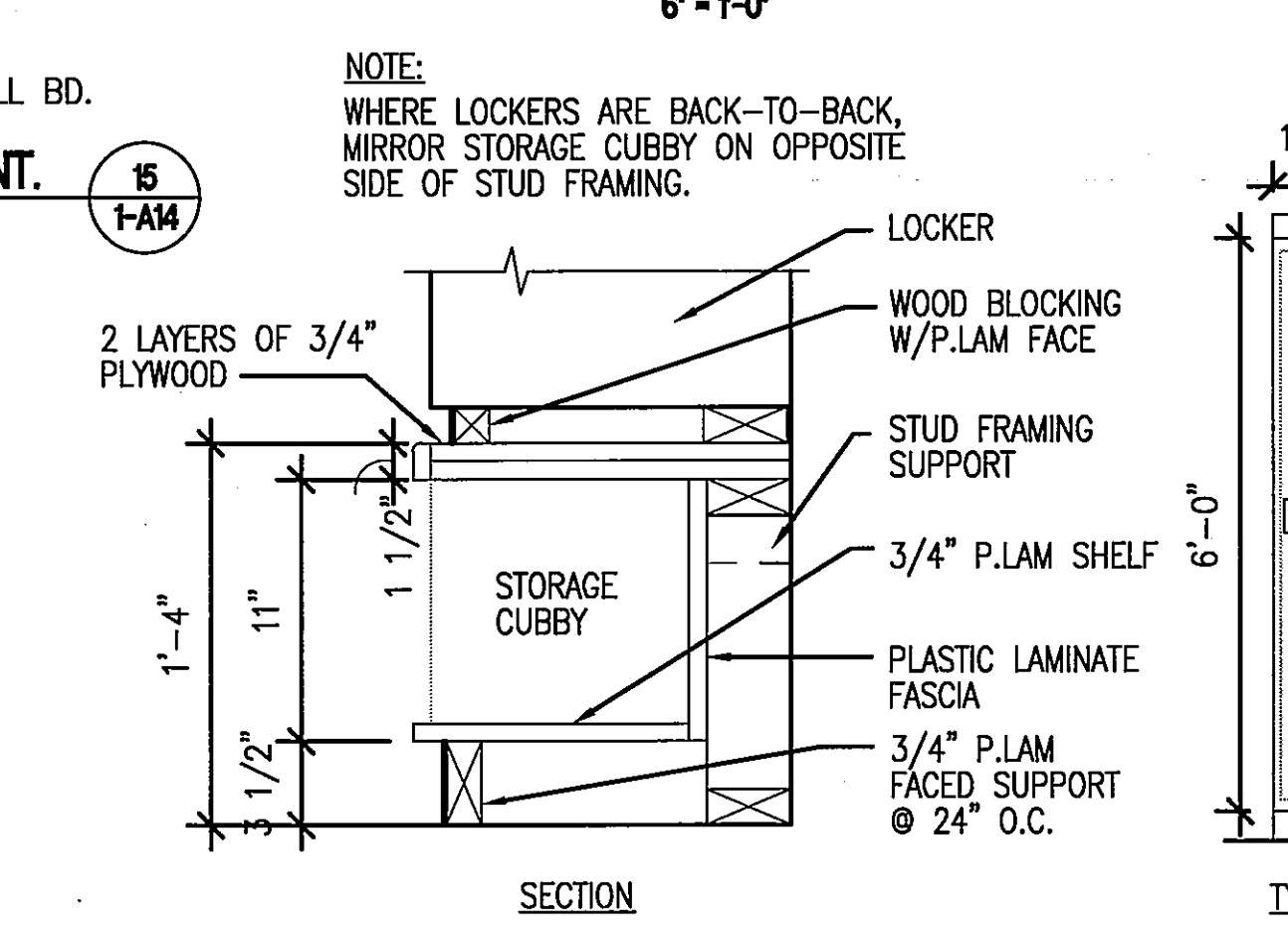
PETG 135 DEGREE CORNERGUARD DETAIL - FLUSH MNT.
8'-1-0"



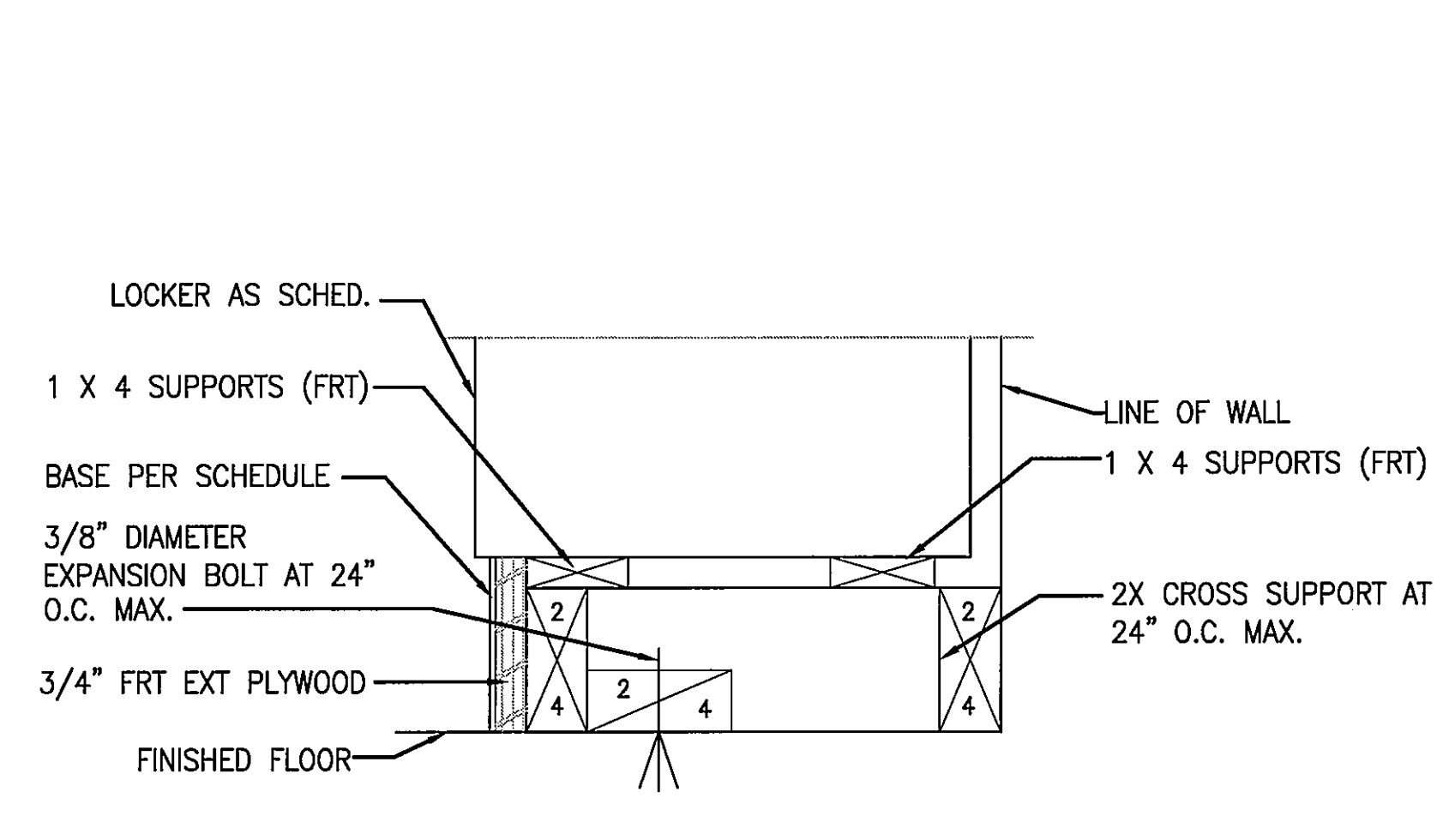
LOUNGE 4S04 - ELEVATION
1/4'-1-0"



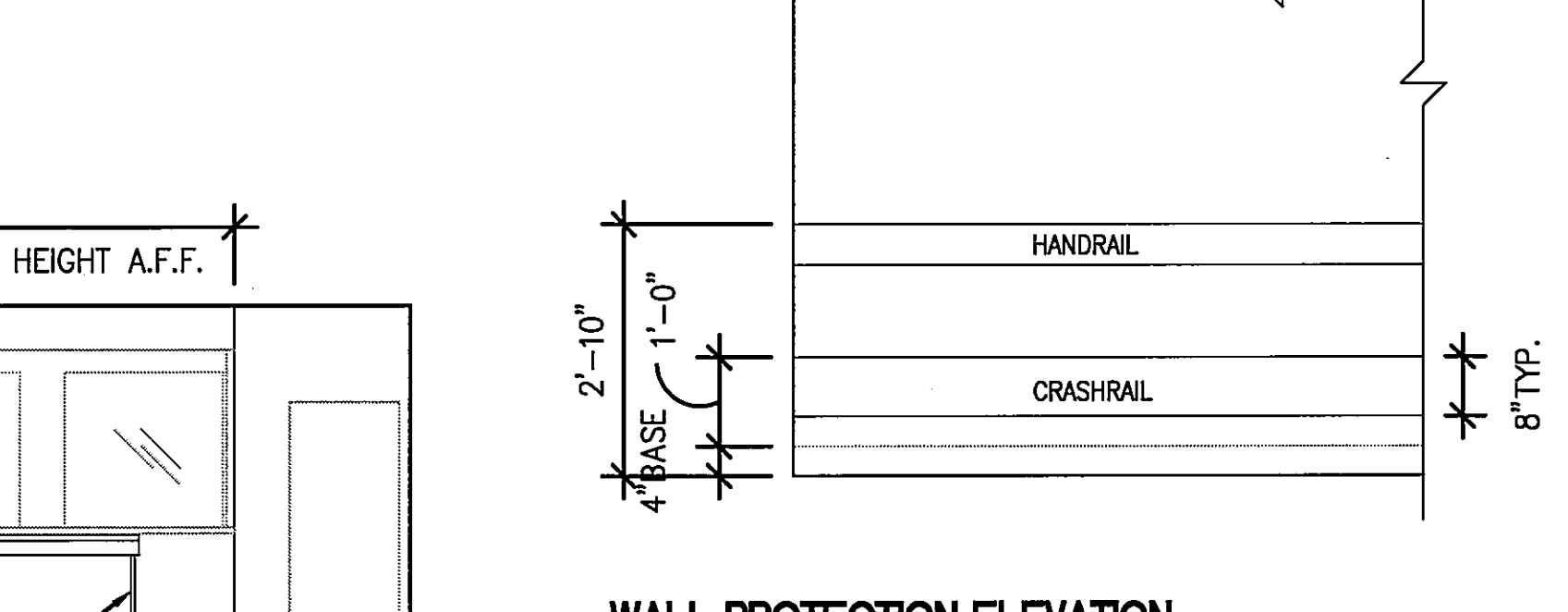
CRASH RAIL SECTION DETAIL - TYP.
8'-1-0"



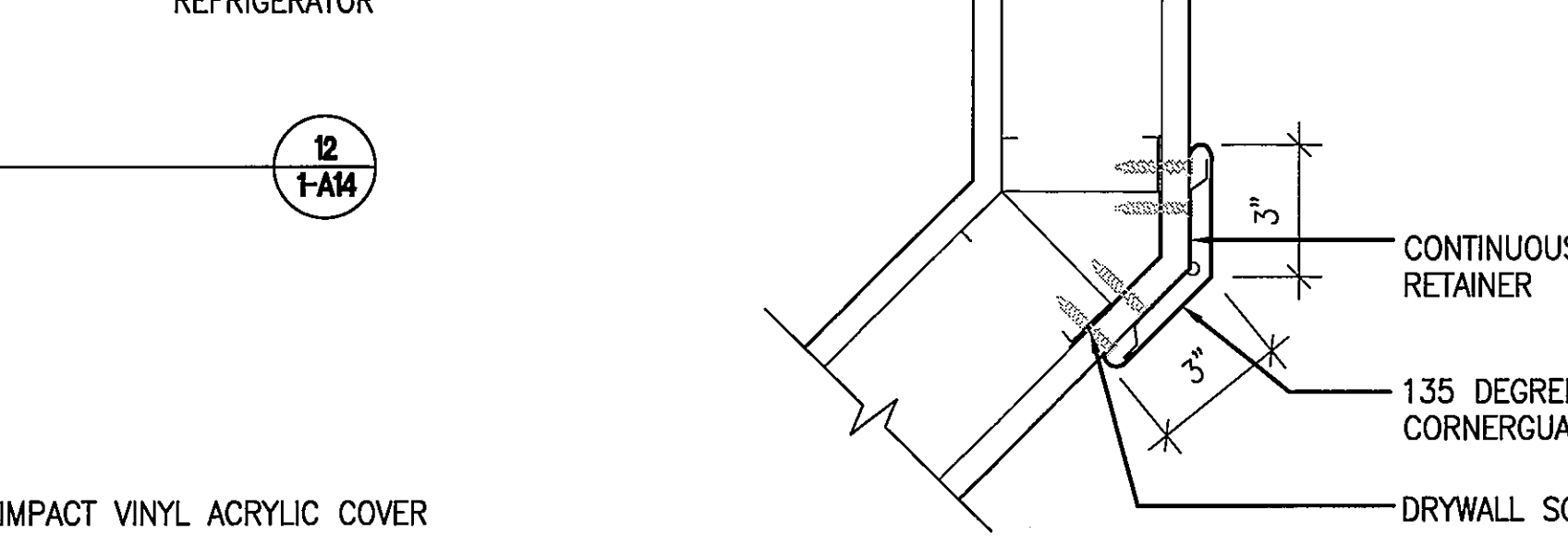
LOCKER TYPE L3 SECTION DETAIL
1/2'-1-0"



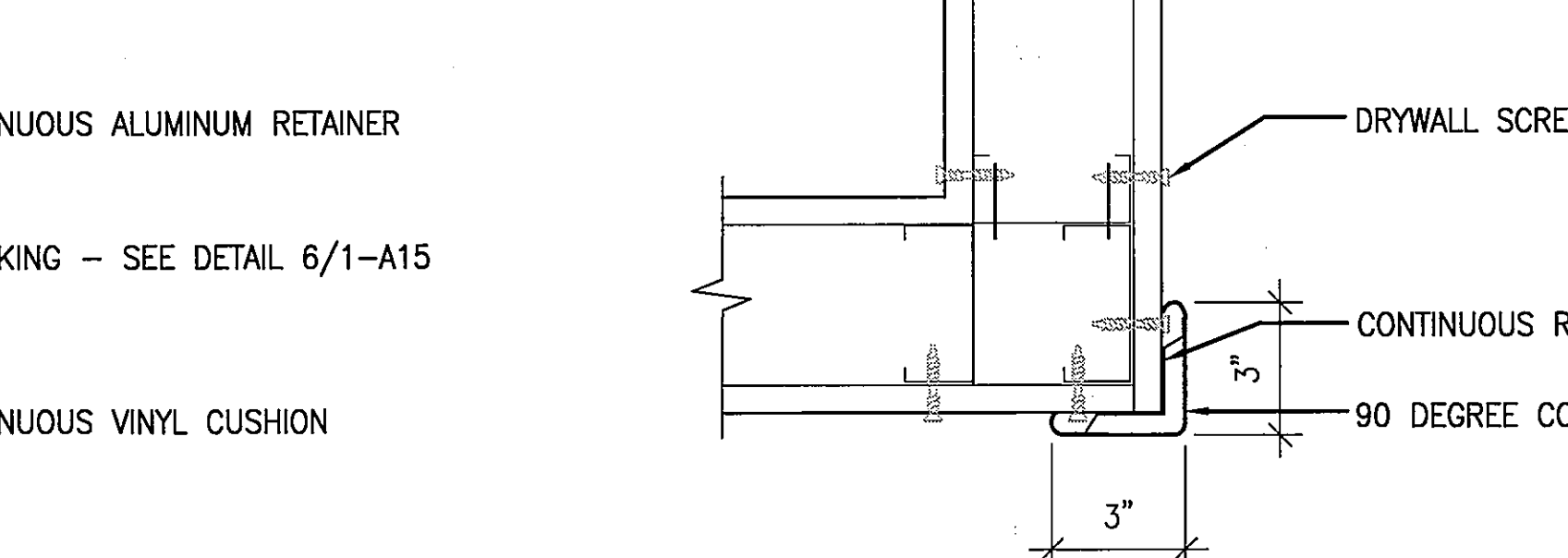
LOCKER BASE DETAIL
3'-1-0"



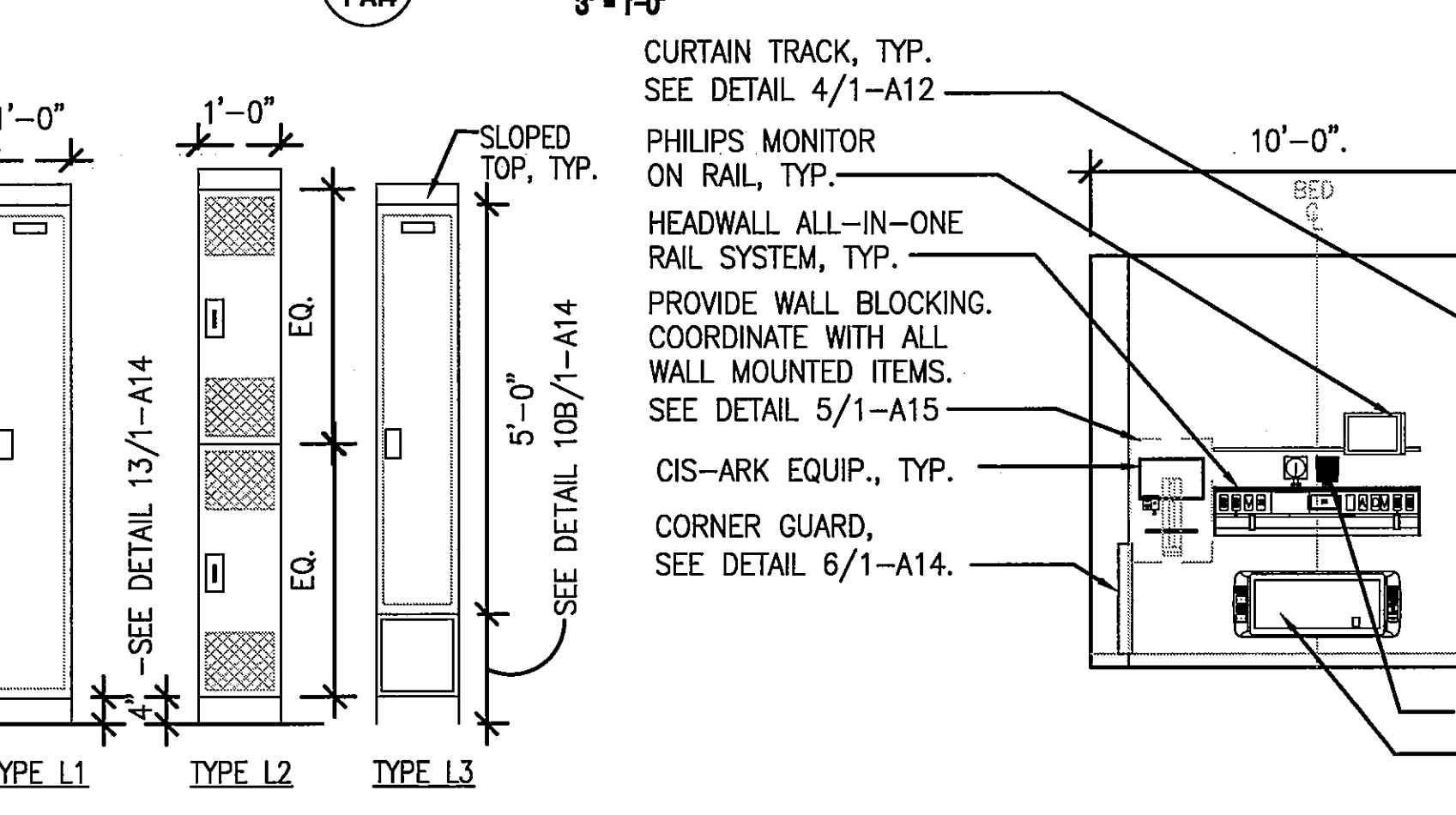
WALL PROTECTION ELEVATION
1/2'-1-0"



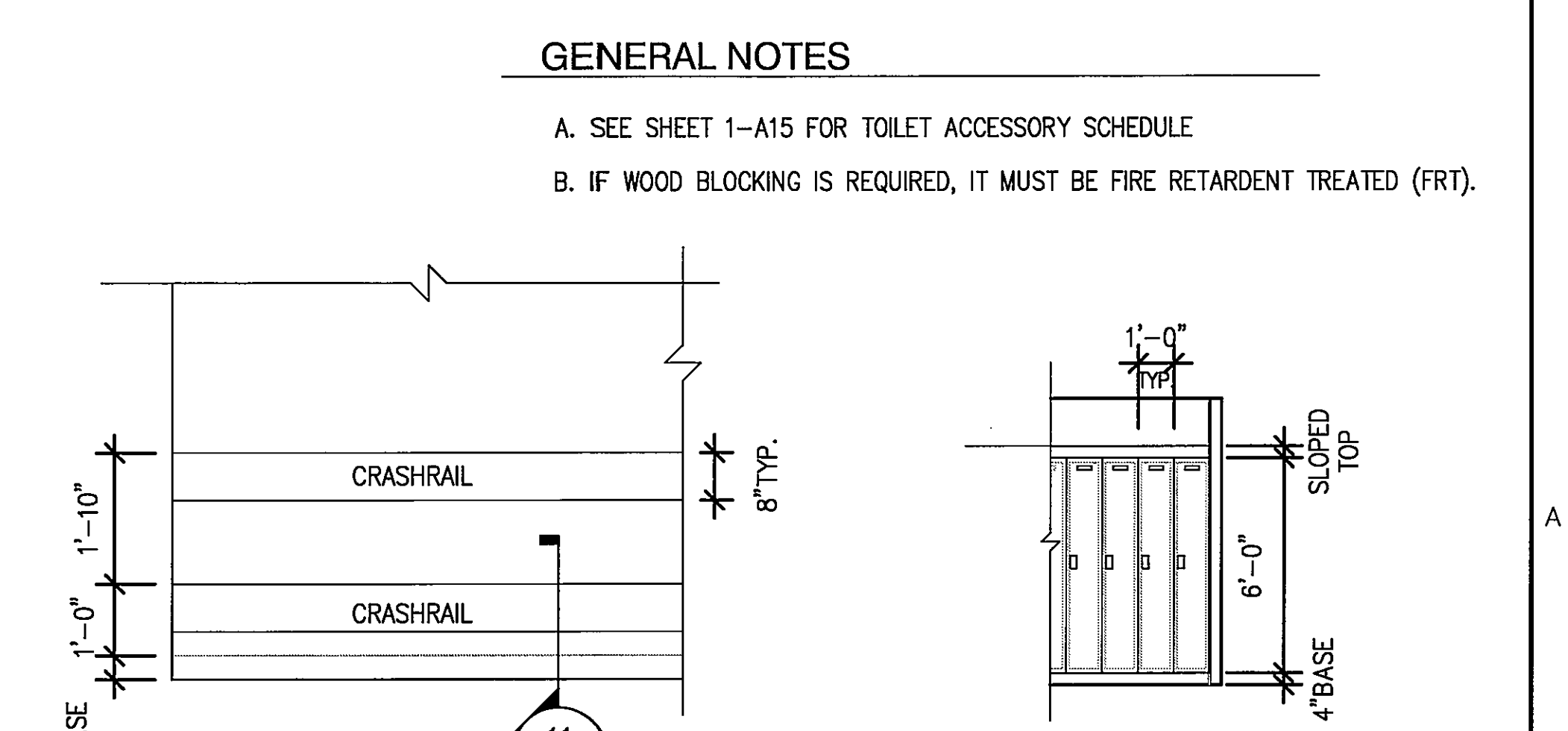
ANGLED CORNERGUARD DETAIL - SURFACE MNT.
3'-1-0"



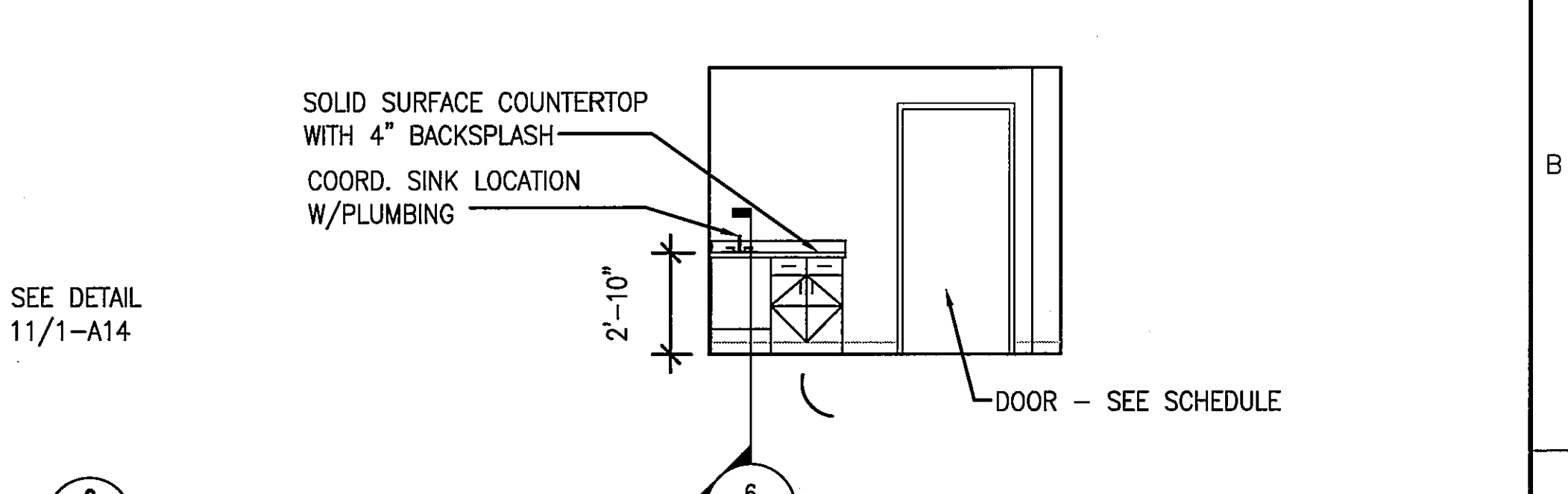
90 DEGREE CORNERGUARD DETAIL - SURFACE MNT.
6'-1-0"



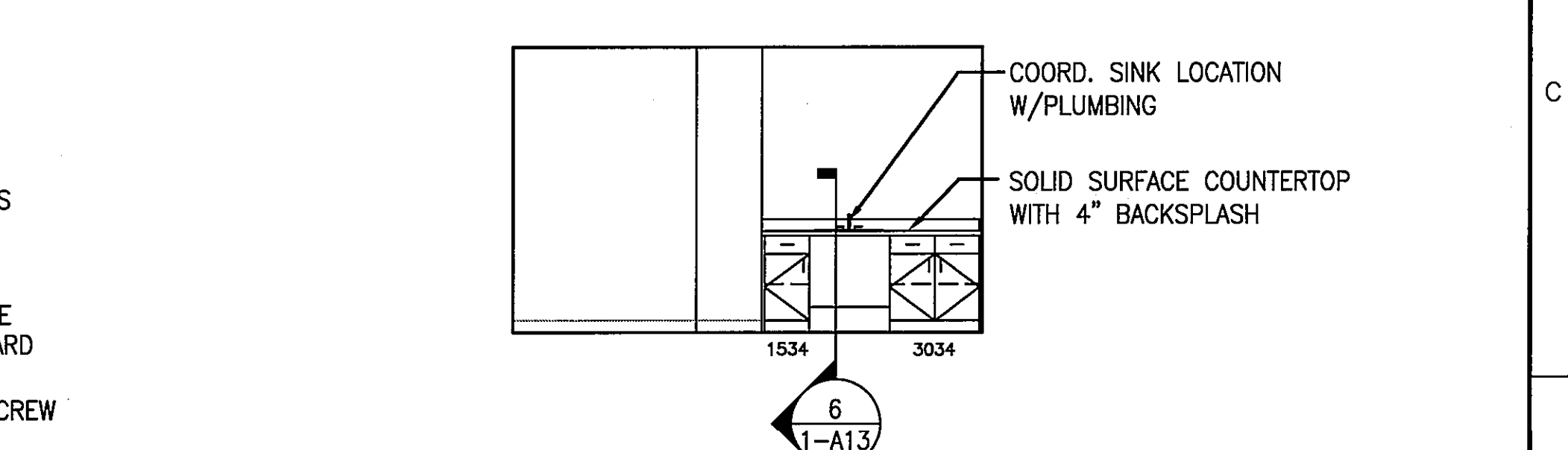
LOCKER TYPE ELEVATIONS
1/2'-1-0"



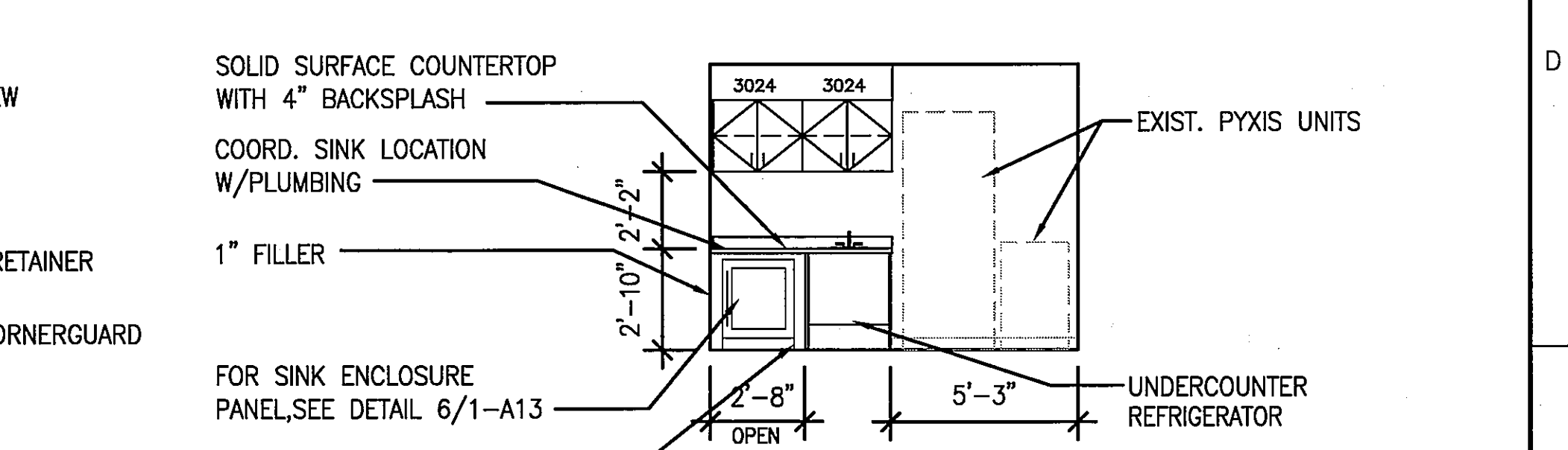
GENERAL NOTES



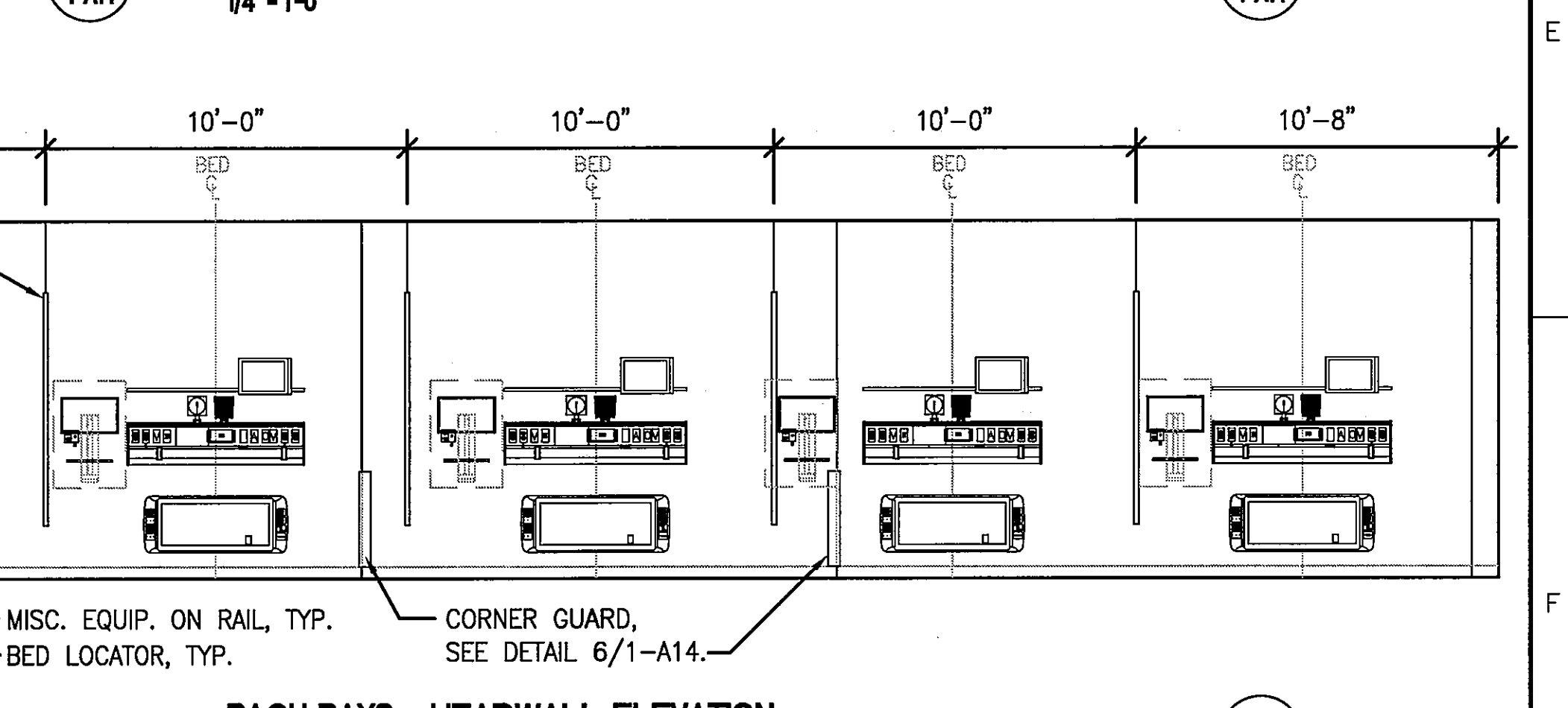
MEN'S B801 AND WOMEN'S B802 TYP. LOCKER ELEVATION
1/4'-1-0"



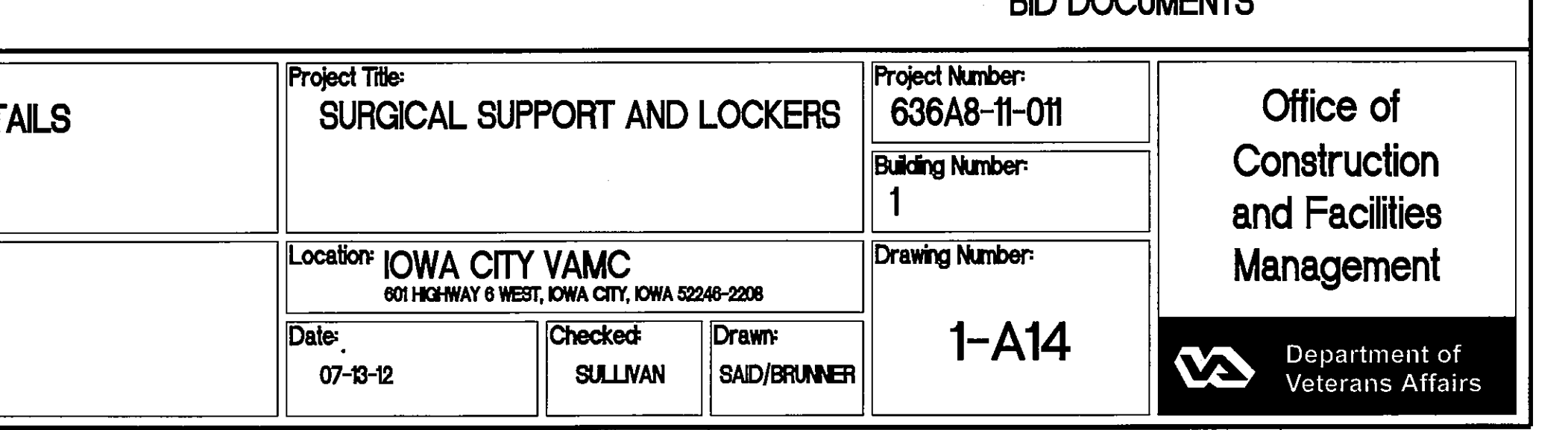
ANES. EXAM AE02 - ELEVATION
1/4'-1-0"



CLEAN 4S16 - ELEVATION
1/4'-1-0"



MEDS. 4S27 - CASEWORK ELEVATION
1/4'-1-0"



PACU BAYS - HEADWALL ELEVATION
1/4'-1-0"

CONSULTANTS: KZFD SIGN 700 BROADWAY STREET CINCINNATI, OH 45202-6010 PHONE: 513.621.6211 FAX: 513.621.6530		ARCHITECT/ENGINEERS: PARADIGM ENGINEERS AND CONSTRUCTORS PO BOX 436223 Louisville, Kentucky 40253 - PH: 502.338.8511 - www.paradigmusa.com		Project Title: SURGICAL SUPPORT AND LOCKERS Project Number: 636A8-11-011 Building Number: 1 Drawing Number: 1-A14		Office of Construction and Facilities Management Department of Veterans Affairs	
Revisions:		Approved Project Director:		Location: IOWA CITY VAMC 601 HIGHWAY 6 WEST, IOWA CITY, IOWA 52248-2208 Date: 07-12-12 Checked: SULLIVAN Drawn: SAD/BRUNNER		FULLY SPRINKLERED BUILDING BID DOCUMENTS	