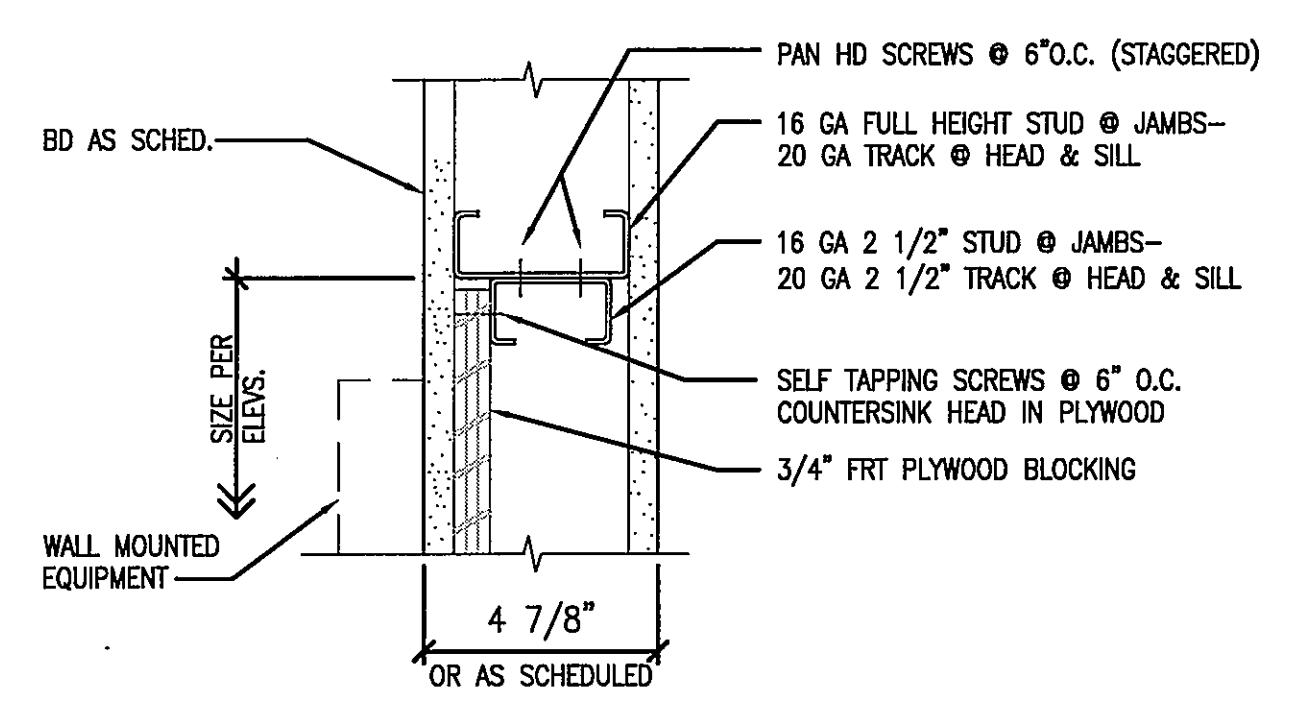
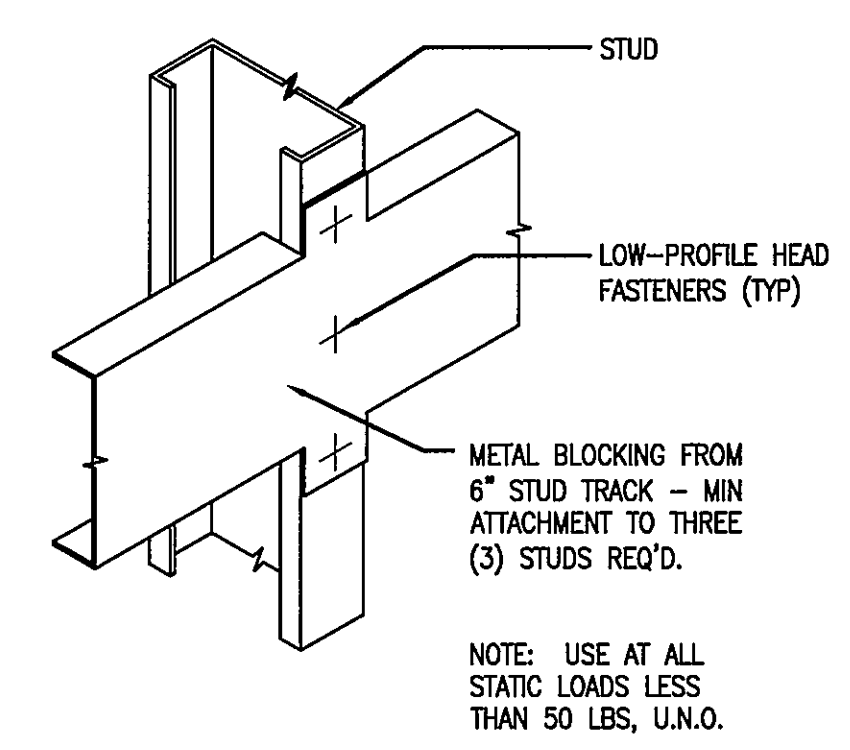


three inches = one foot
one and one half inches = one foot
one inch = one foot
three quarters inch = one foot
one half inch = one foot
three eighths inch = one foot
one quarter inch = one foot
one eighth inch = one foot

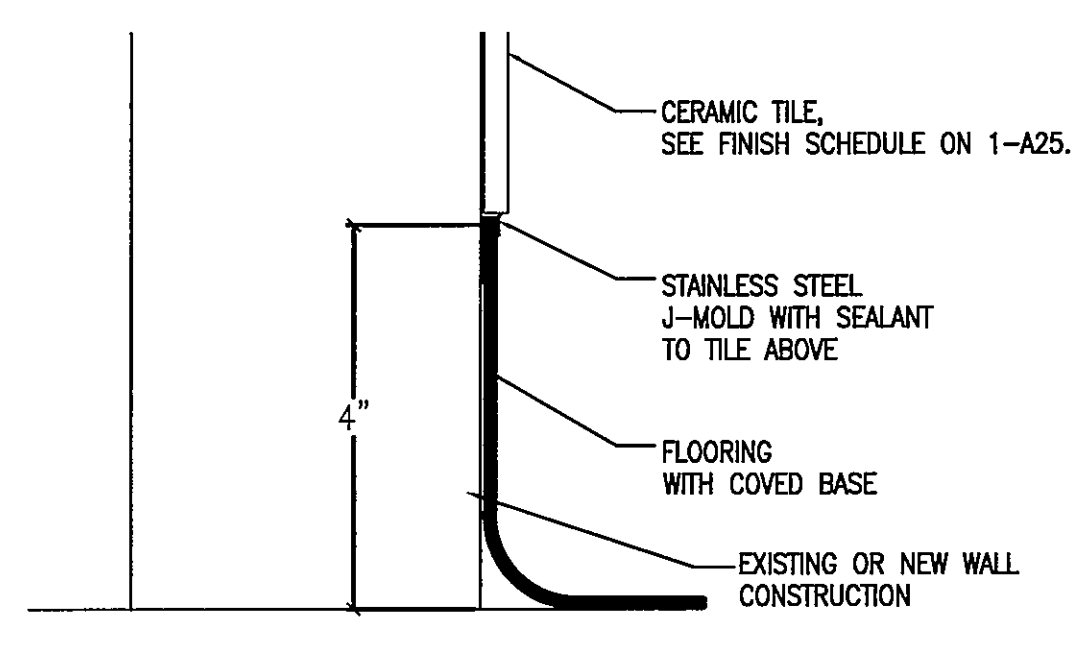
NOT USED
3
1-A15



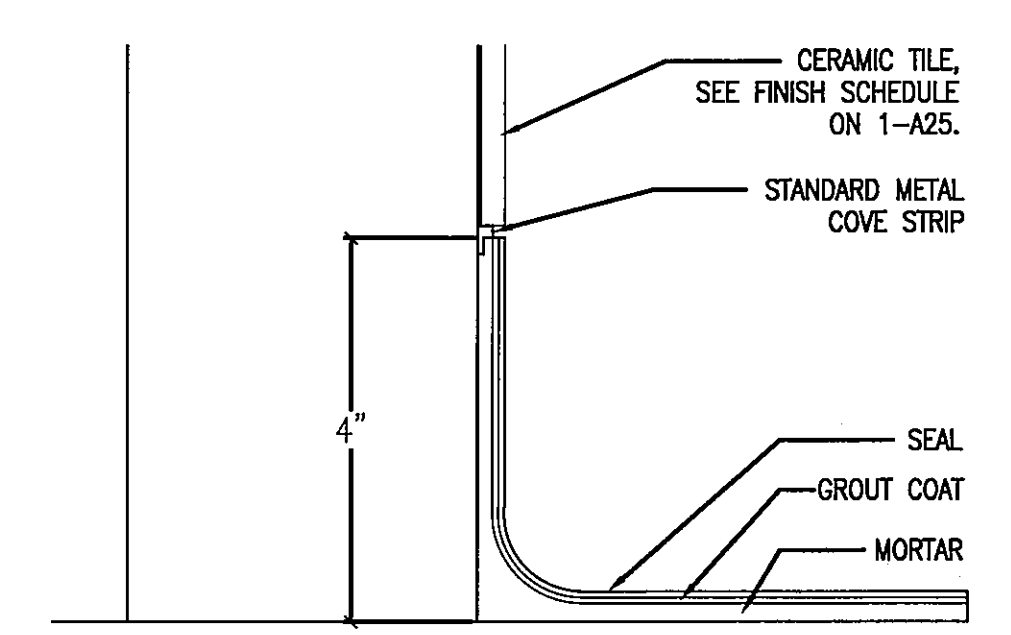
PLYWOOD BLOCKING DETAIL
3'-1'-0"



METAL BLOCKING DETAIL
3'-1'-0"

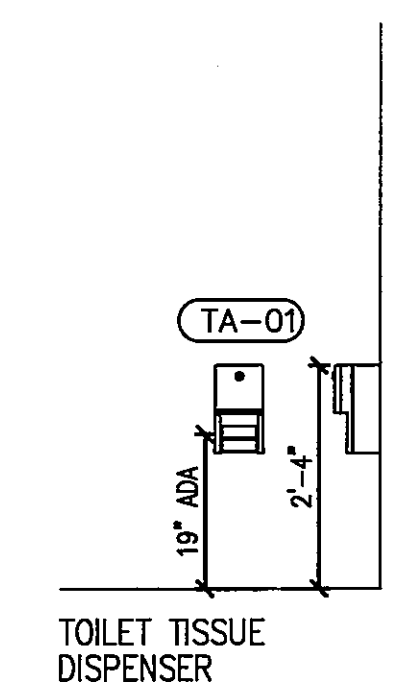


FLOOR BASE DETAIL
6'-1'-0"

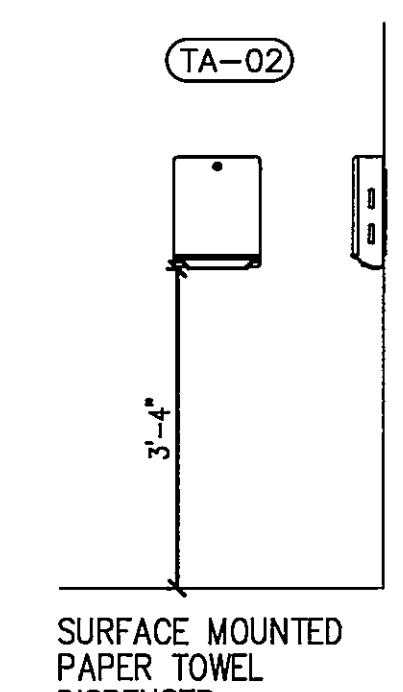


FLOOR BASE DETAIL - LOCKER ROOMS
6'-1'-0"

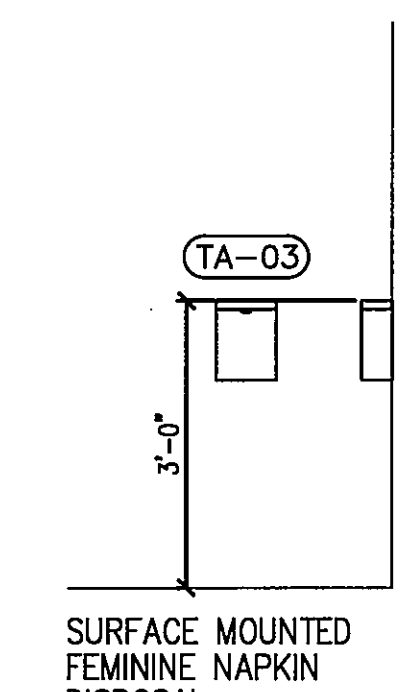
- GENERAL NOTES:
- TOILET ACCESSORIES INDICATED REPRESENT BOBRICK MODELS. SEE SPECIFICATION FOR LIST OF OTHER APPROVED MANUFACTURERS.
 - ALL ACCESSORIES SHALL BE INSTALLED AT MOUNTING HEIGHTS THAT SATISFY MOST CURRENT ADA REGULATIONS.



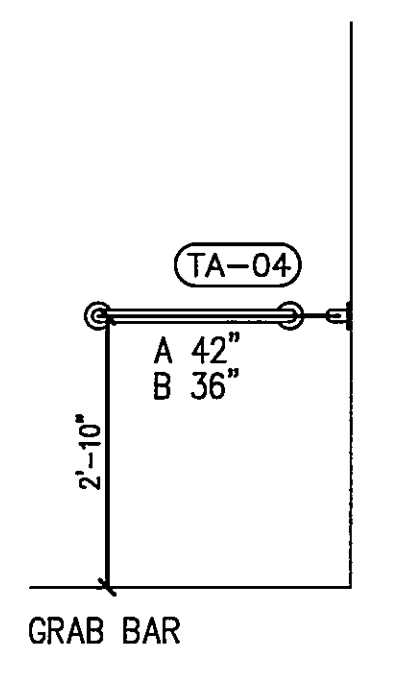
TOILET TISSUE DISPENSER



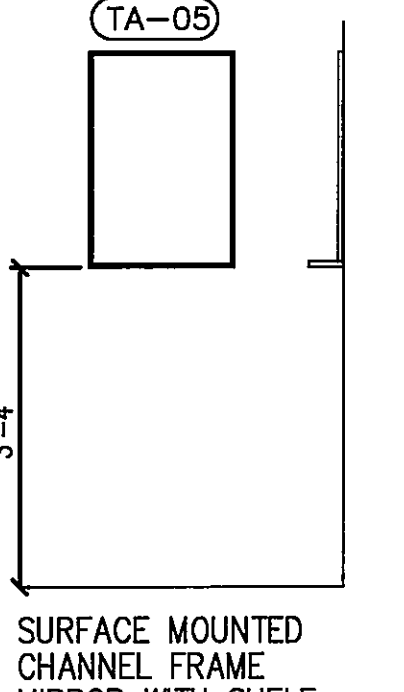
SURFACE MOUNTED PAPER TOWEL DISPENSER



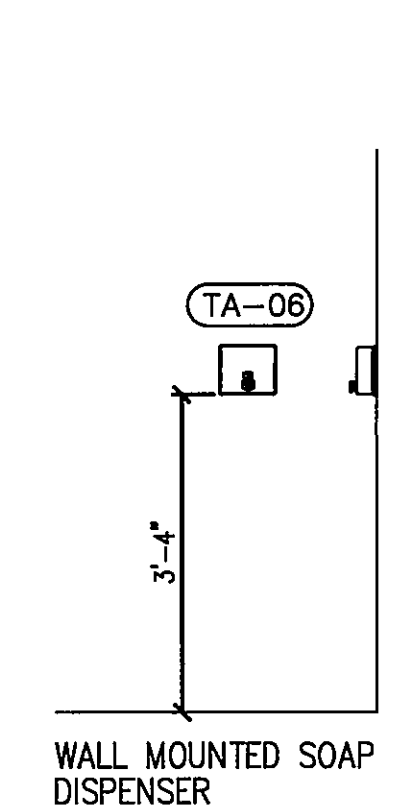
SURFACE MOUNTED FEMININE NAPKIN DISPOSAL



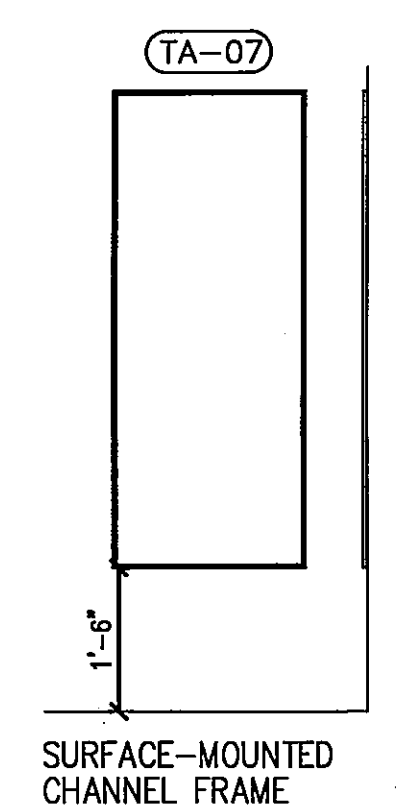
GRAB BAR



SURFACE MOUNTED CHANNEL FRAME MIRROR WITH SHELF

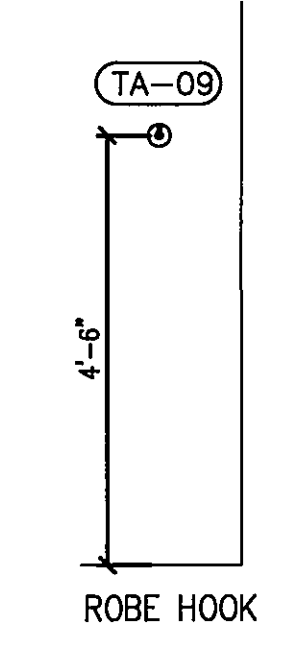


WALL MOUNTED SOAP DISPENSER

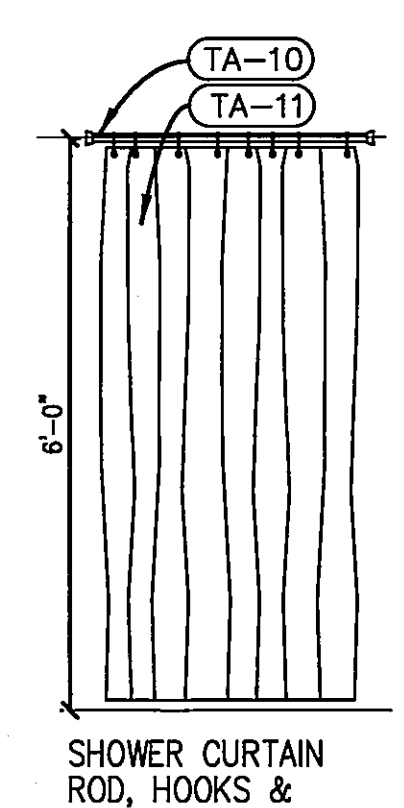


SURFACE-MOUNTED CHANNEL FRAME MIRROR

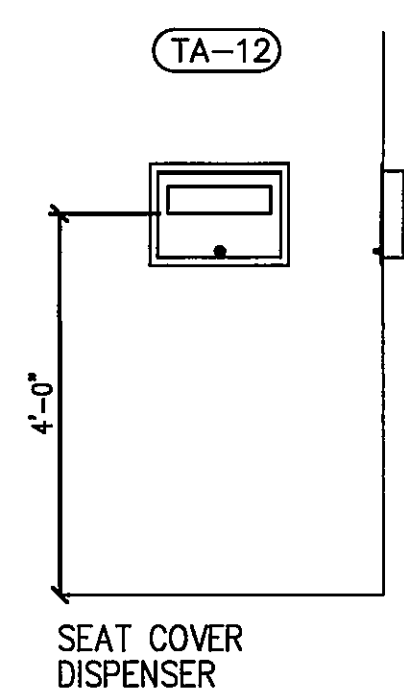
TA-08
NOT USED



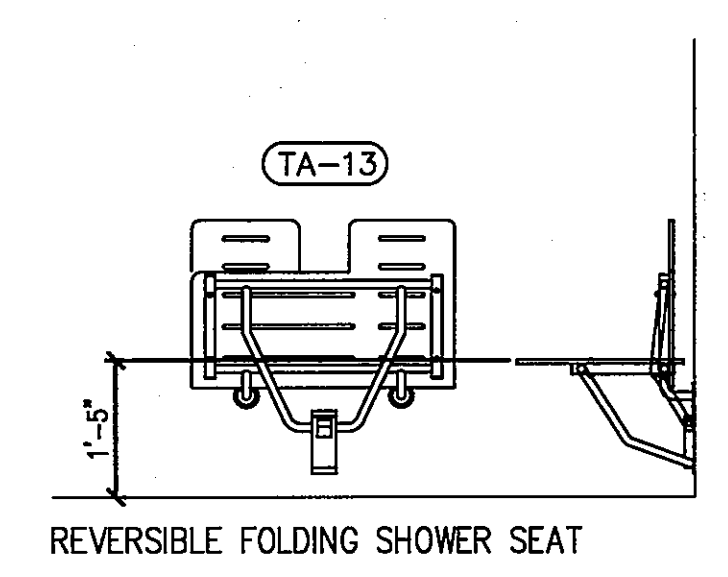
ROBE HOOK



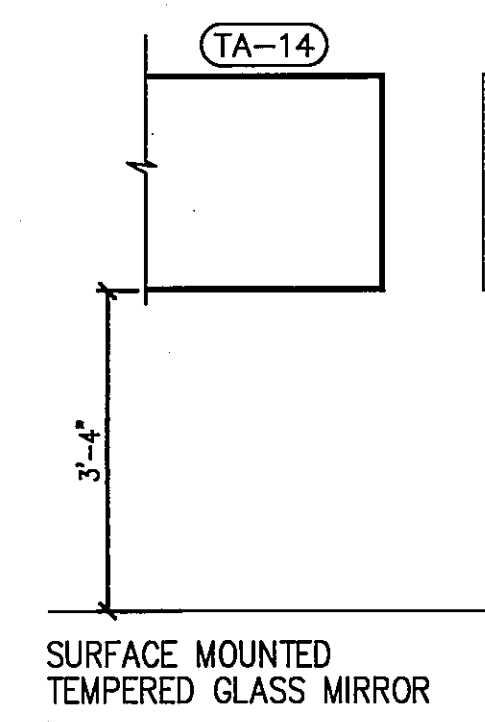
SHOWER CURTAIN ROD, HOOKS & CURTAIN



SEAT COVER DISPENSER

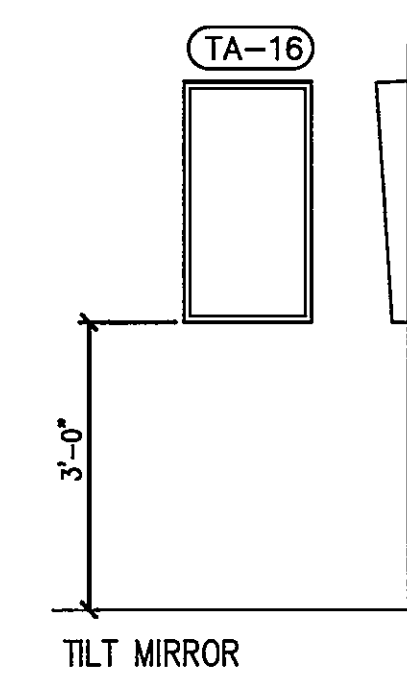


REVERSIBLE FOLDING SHOWER SEAT

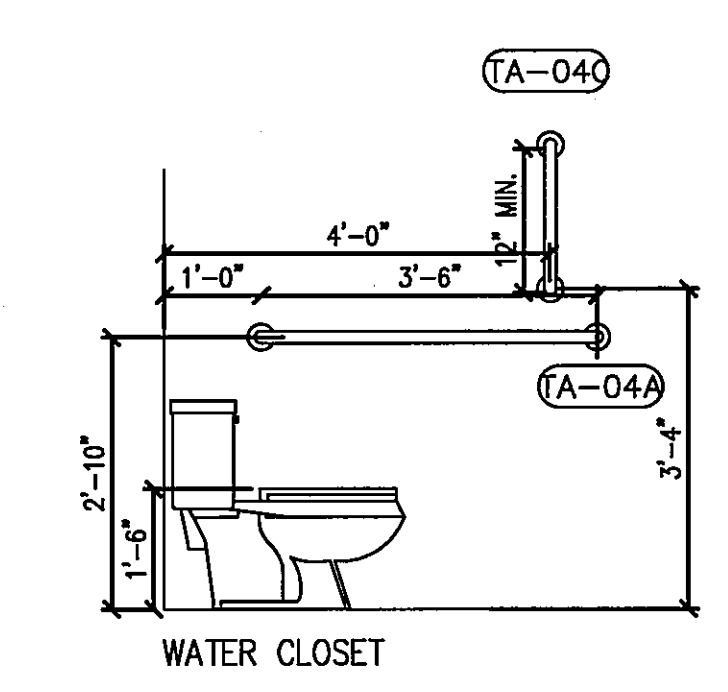


SURFACE MOUNTED TEMPERED GLASS MIRROR

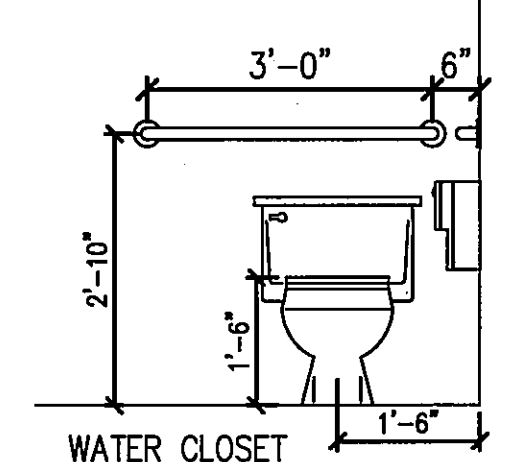
TA-15
NOT USED



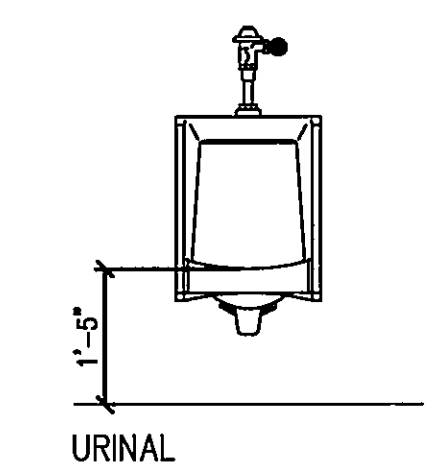
TILT MIRROR



WATER CLOSET



WATER CLOSET



URINAL

| TOILET ACCESSORY SCHEDULE - SEE 7/1-A15 FOR EQUIPMENT SCHEDULE & RESPONSIBILITY LIST. | | | |
|---|---------|--------|---------|
| ACCESSORY DESCRIPTION | MODEL | MARK | REMARKS |
| 42" GRAB BAR | B-6806 | TA-04A | |
| 36" GRAB BAR | B-6806 | TA-04B | |
| 12" GRAB BAR | B-6806 | TA-04C | |
| 18" X 24" MIRROR WITH SHELF | B-166 | TA-05 | |
| 24" X 60" MIRROR (VERTICAL) | B-290 | TA-07 | |
| NOT USED | --- | TA-08 | |
| ROBE HOOK | B-671 | TA-09 | |
| SHOWER CURTAIN ROD | B-6107 | TA-10 | |
| SHOWER CURTAIN WITH HOOKS | B-204-2 | TA-11 | |
| REVERSIBLE FOLDING SHOWER SEAT | B-5181 | TA-13 | |
| 102" X 24" MIRROR | B-2908 | TA-14 | |
| 88" X 27" MIRROR | B-2908 | TA-15 | |
| 18" X 30" TILT MIRROR | B-293 | TA-16 | |

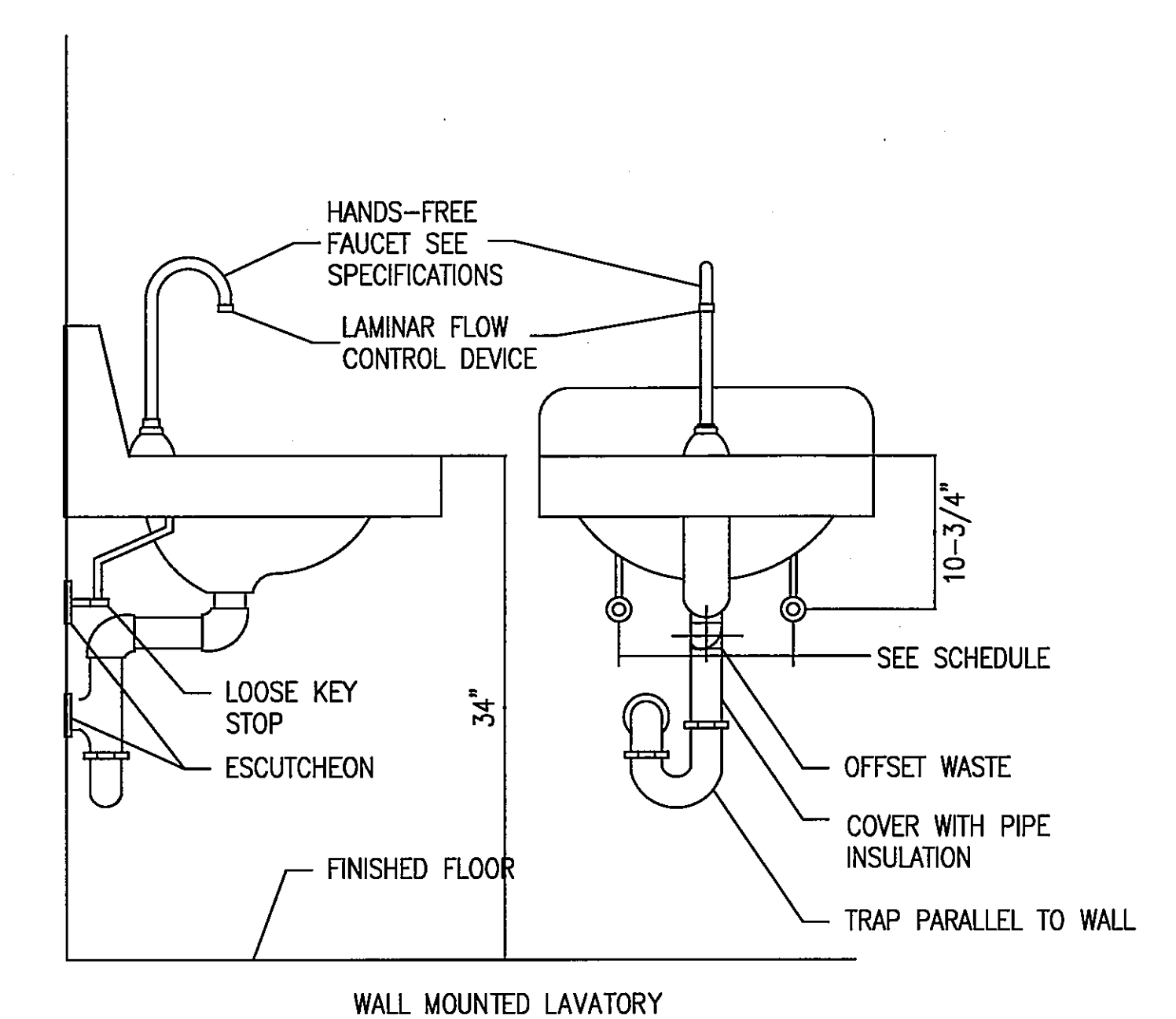
| EQUIPMENT SCHEDULE | RESPONSIBILITY | | | |
|---------------------------------------|----------------|----|---|---|
| | CC | VC | W | R |
| TOILET TISSUE DISPENSER | | | | |
| PAPER TOWEL DISPENSER | | | | |
| WASTE RECEPTACLE | | | | |
| FEMININE NAPKIN DISPOSAL | | | | |
| 42" GRAB BAR | | | | |
| 36" GRAB BAR | | | | |
| 12" GRAB BAR | | | | |
| 18" X 24" MIRROR WITH SHELF | | | | |
| SOAP DISPENSER | | | | |
| 24" X 60" MIRROR (VERTICAL) | | | | |
| NOT USED | | | | |
| ROBE HOOK | | | | |
| SHOWER CURTAIN ROD | | | | |
| SHOWER CURTAIN WITH HOOKS | | | | |
| SEAT COVER DISPENSER | | | | |
| REVERSIBLE FOLDING SHOWER SEAT | | | | |
| 102" X 24" MIRROR | | | | |
| 18" X 30" TILT MIRROR | | | | |
| CIS-ARK EQUIPMENT (PACU) | | | | |
| HEADWALL UNIT (PACU) | | | | |
| BED LOCATOR (PACU) | | | | |
| PHILIPS MONITOR (PACU) | | | | |
| CURTAINS, ON TRACK (PACU) | | | | |
| STRETCHERS | | | | |
| LOCKERS - FULL SIZE | | | | |
| LOCKERS, 1/1 | | | | |
| COUNTERTOP ICE MAKER (LOUNGE) | | | | |
| TV (LOUNGE) | | | | |
| REFRIGERATOR - FULL SIZE (LOUNGE) | | | | |
| REFRIGERATOR - UNDER COUNTER (LOUNGE) | | | | |

RESPONSIBILITY ABBREVIATION KEY

CC - CONTRACTOR FURNISHED & INSTALLED
VC - VA FURNISHED & CONTRACTOR INSTALLED
W - VA FURNISHED & VA INSTALLED
R - RELOCATED

EQUIPMENT SCHEDULE
7
1-A15

TOILET ACCESSORIES
1/2' - 1'-0"



WALL MOUNTED LAVATORY

FULLY SPRINKLERED BUILDING
BID DOCUMENTS

1
1-A15

CONSULTANTS:

KZF DESIGN

700 BROADWAY STREET
CINCINNATI, OH 45202-6010
PHONE: 513.621.6211
FAX: 513.621.6530

ALAN B. SULLIVAN
REGISTERED ARCHITECT
13784

ARCHITECT/ENGINEERS:

PARADIGM

ENGINEERS AND CONSTRUCTORS

PO BOX 436223 Louisville, Kentucky 40253 - PH: 502.339.8511 - www.paradigmusa.com

Drawing Title:
INTERIOR DETAILS

Approved Project Director

Project Title:
SURGICAL SUPPORT AND LOCKERS

Location: IOWA CITY VAMC
801 HIGHWAY 6 WEST, IOWA CITY, IOWA 52249-2226

Date: 07-13-12

Checked: SULLIVAN

Drawn: SAID/BRUNNER

Project Number:
636A8-11-011

Building Number:
1

Drawing Number:
1-A15

Office of
Construction
and Facilities
Management

Department of
Veterans Affairs