

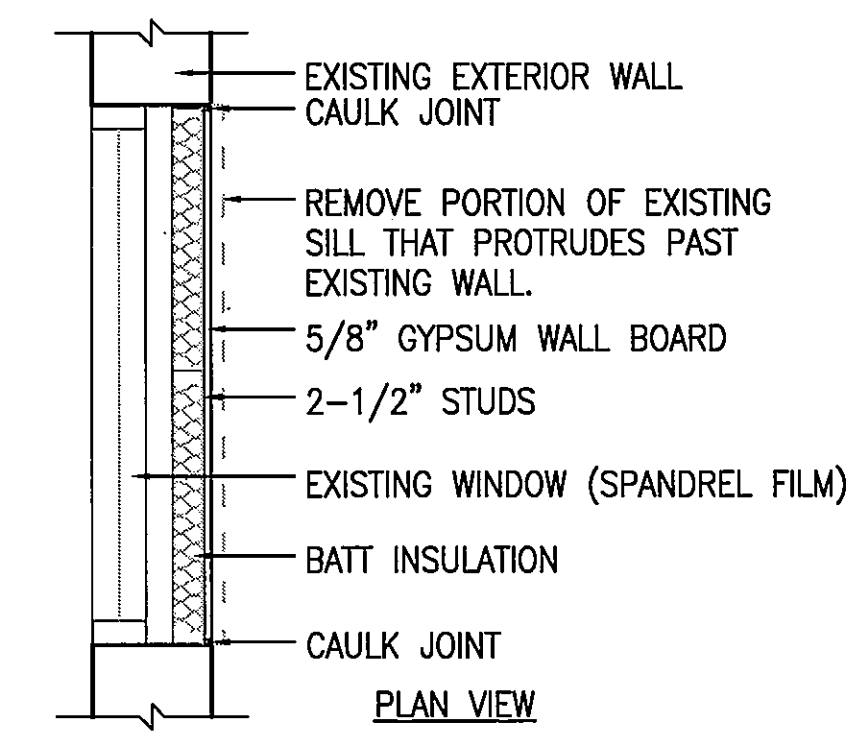
three inches = one foot
one and one half inches = one foot
one inch = one foot
three quarters inch = one foot
one half inch = one foot
one quarter inch = one foot
one eighth inch = one foot

GENERAL NOTES

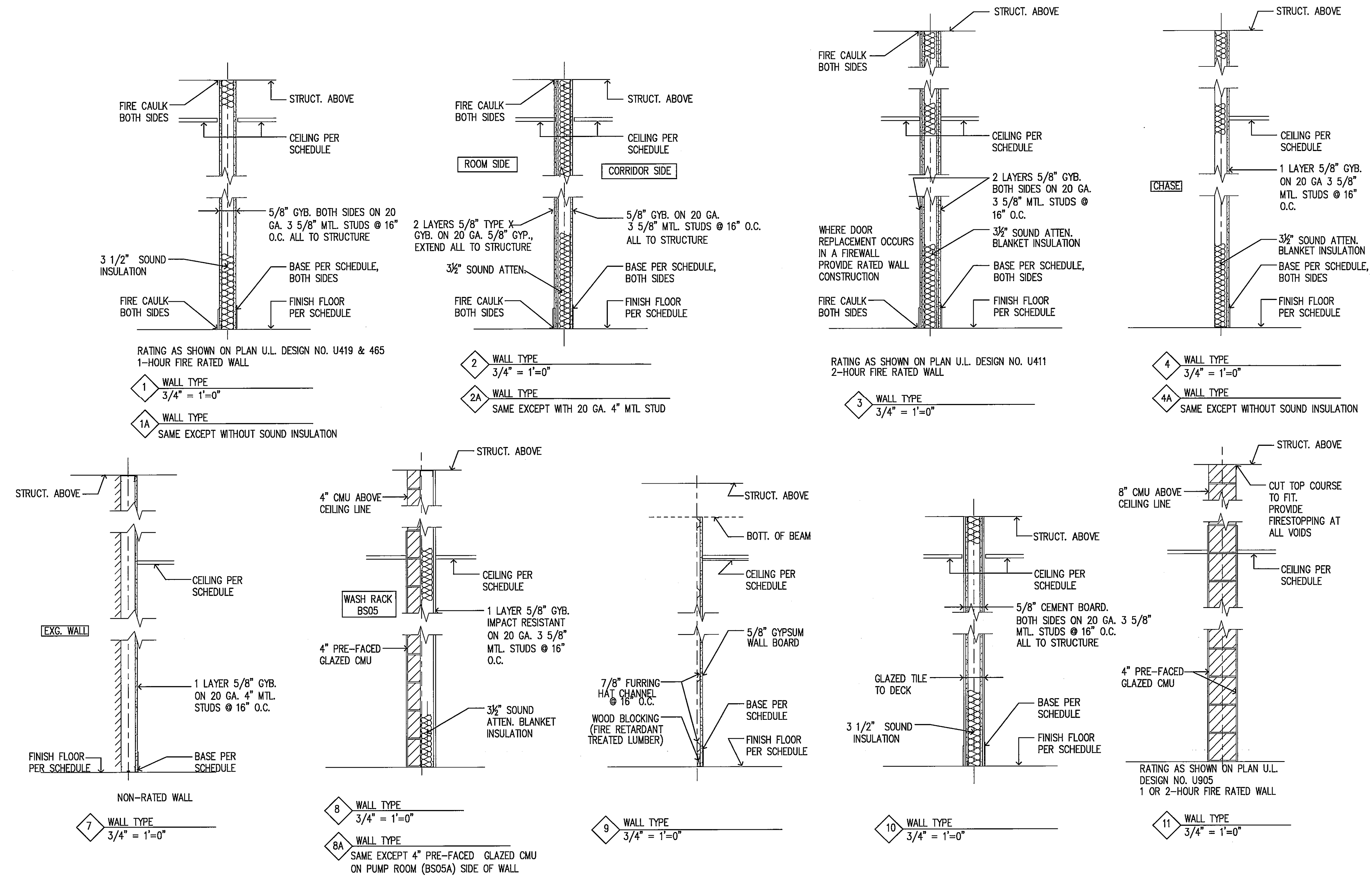
A. GYPSUM BOARD FOR CORRIDORS IS TO BE ABRASION RESISTANT, MOLD RESISTANT, TYPE X CORE WITH ABRASION RESISTANT PAPER FACE.

B. PROVIDE BLOCKING AT ALL LOCATIONS TO HAVE WALL MOUNTED ITEMS. SEE BLOCKING DETAILS 5 AND 6/1-A15.

DETAIL - WINDOW INFILL
3/4" = 1'-0"



WALL TYPES
3/4" = 1'-0"



FULLY SPRINKLERED BUILDING
BID DOCUMENTS

CONSULTANTS: KZF DESIGN 700 BROADWAY STREET CINCINNATI, OH 45202-6010 PHONE: 513.621.6211 FAX: 513.621.6530		ARCHITECT/ENGINEERS: PARADIGM ENGINEERS AND CONSTRUCTORS PO BOX 436223 Louisville, Kentucky 40253 - PH: 502.339.8511 - www.paradigmusa.com		Drawing Title: INTERIOR DETAILS - PARTITION TYPES		Project Title: SURGICAL SUPPORT AND LOCKERS		Project Number: 636A8-11-011		Office of Construction and Facilities Management Department of Veterans Affairs	
				Approved Project Director		Location: IOWA CITY VAMC 601 HIGHWAY 6 WEST, IOWA CITY, IOWA 52249-2208		Building Number: 1			
						Date: 07-13-12		Checked: SULLIVAN			
						Drawn: SAID/BRUNNER		Drawing Number: 1-A16			