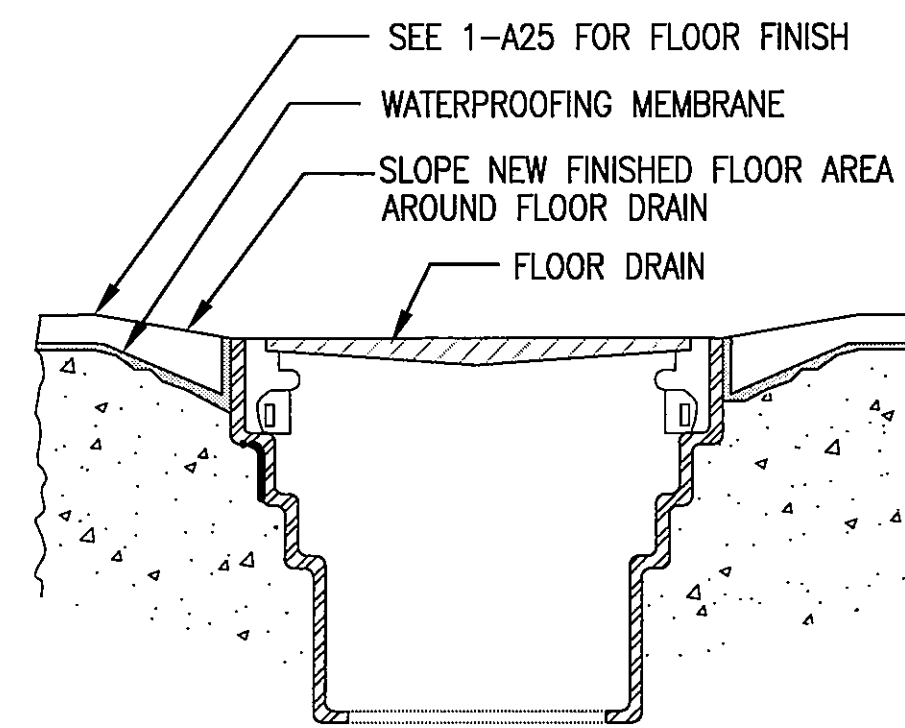
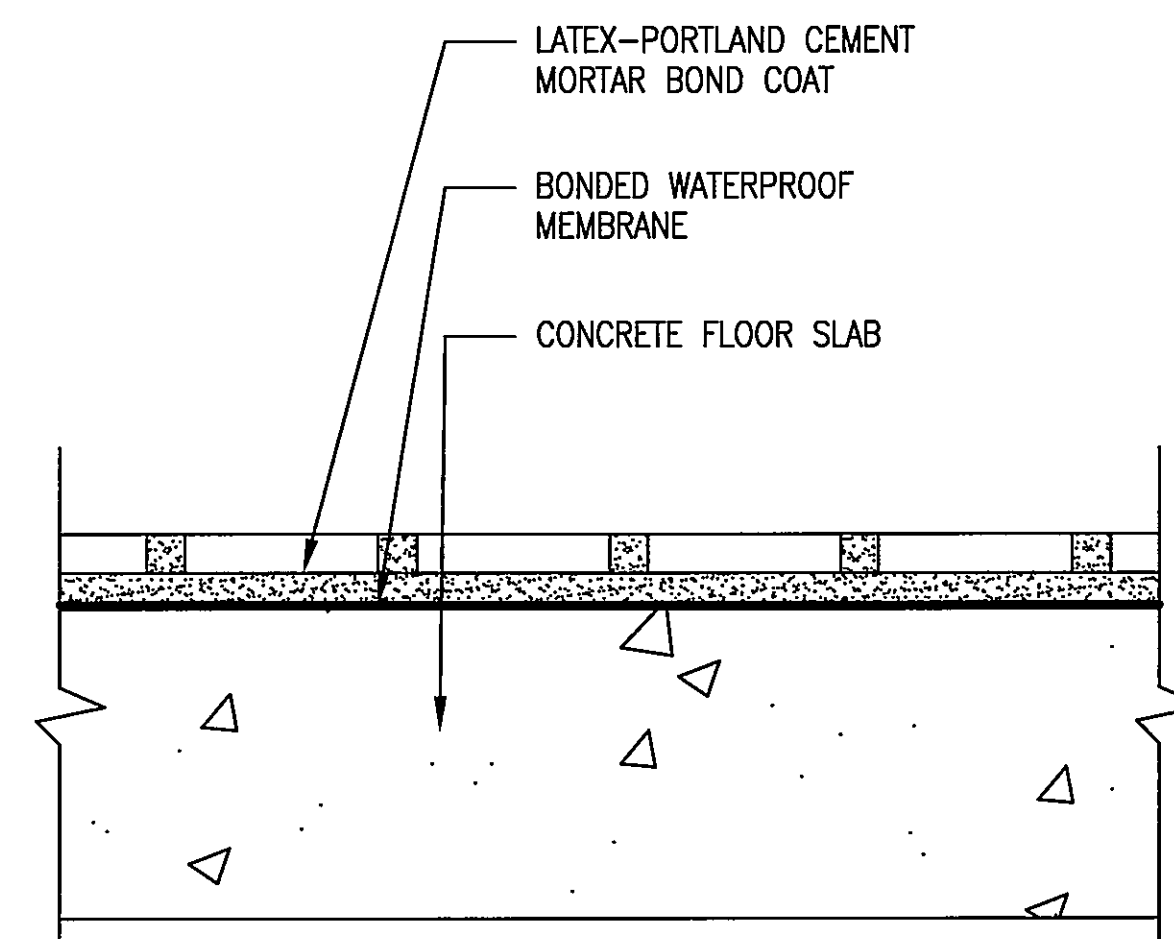


three inches = one foot
one and one half inches = one foot
one inch = one foot
three quarters inch = one foot
one half inch = one foot
three eighths inch = one foot
one quarter inch = one foot
one eighth inch = one foot



FLOOR DRAIN DETAIL
NOT TO SCALE

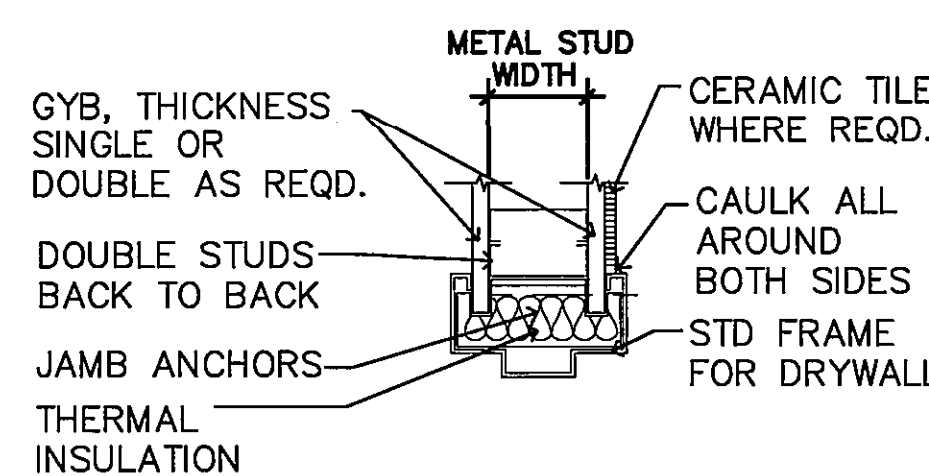
7
1-A7



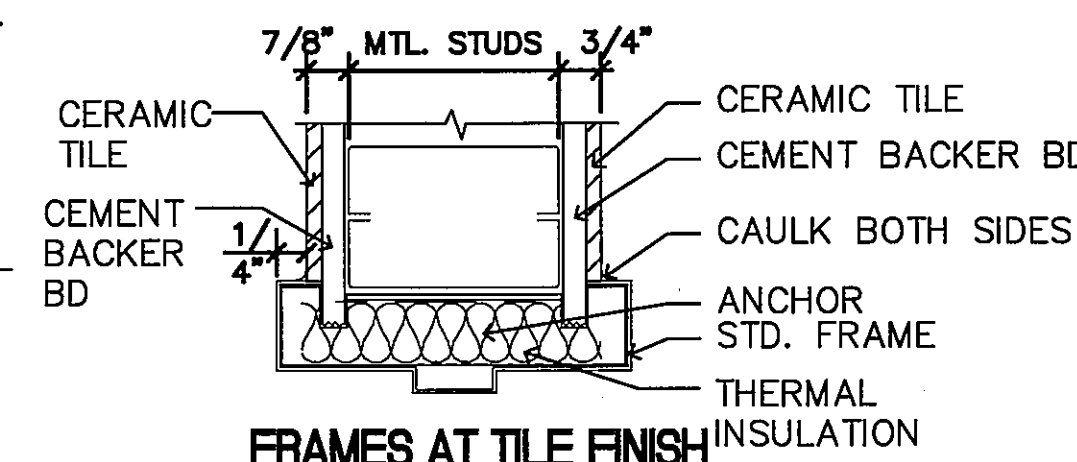
TCNA 2007 DETAIL F122-07

FLOOR MEMBRANE DETAIL
NOT TO SCALE

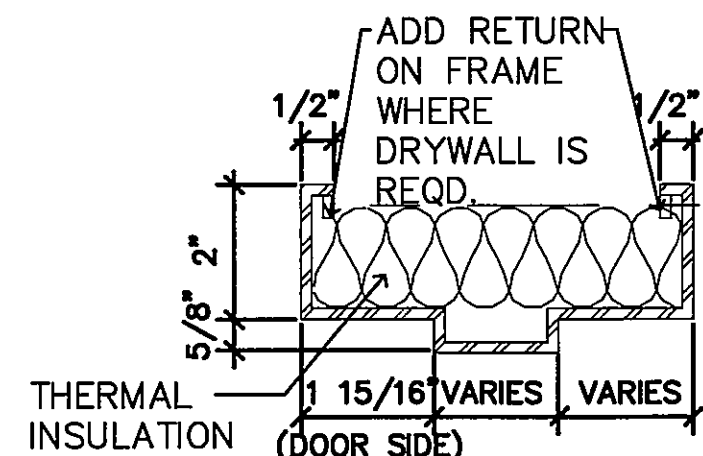
8
1-A7



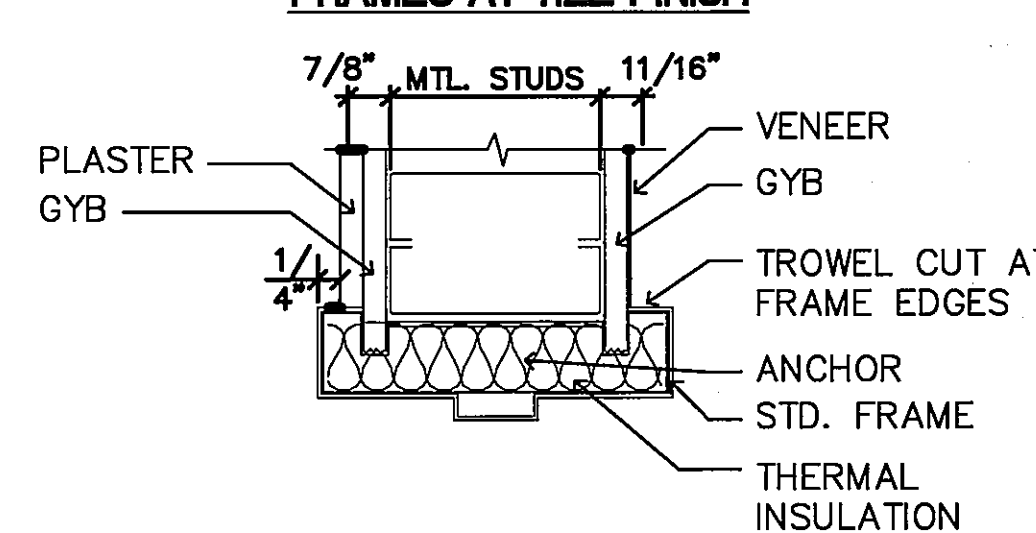
FRAMES IN METAL STUD PARTITIONS



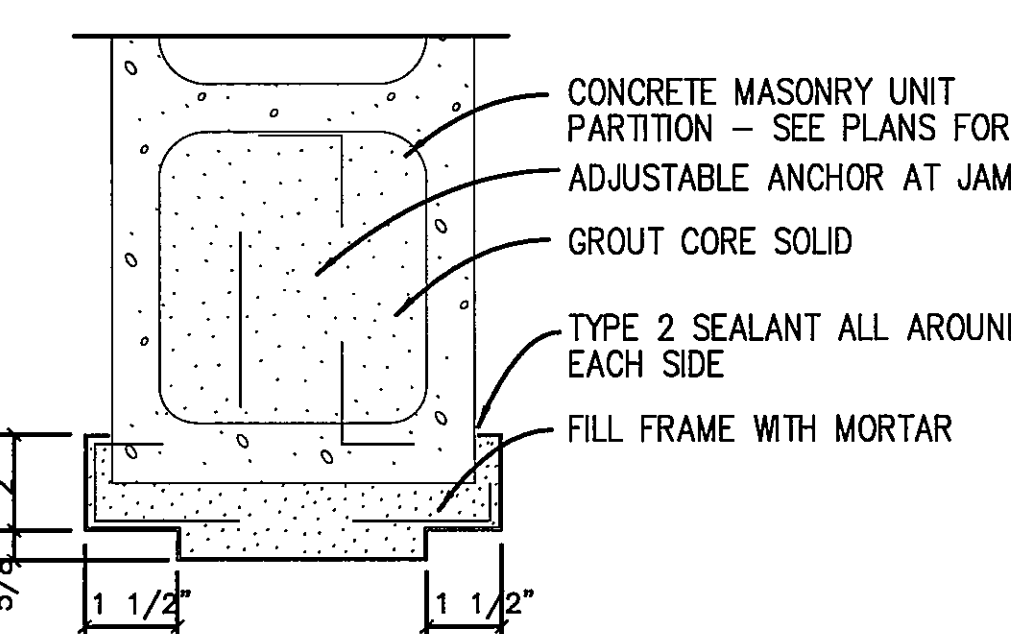
FRAMES AT TILE FINISH



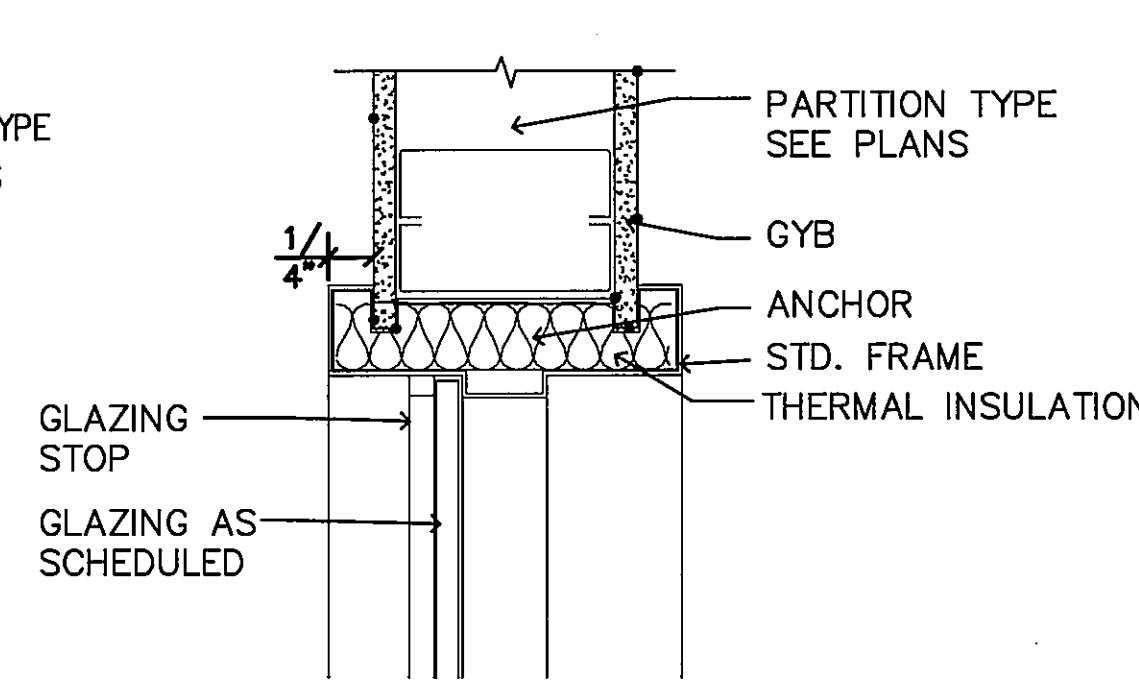
STANDARD DOOR FRAME



METAL STUD ON PLASTER FINISH



FRAME IN MASONRY

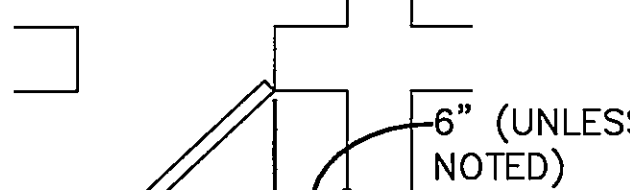


WINDOW BORROWED LIGHT FRAME

TYPICAL HEAD/JAMB DETAILS
NOT TO SCALE

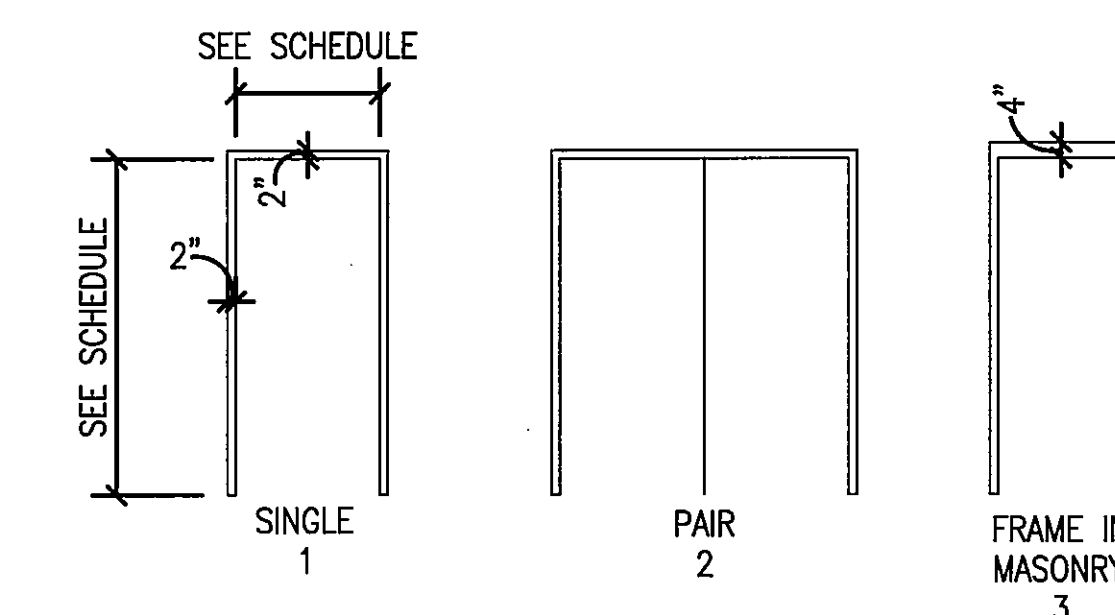
5
1-A7

THE FOLLOWING DIAGRAM INDICATES HOW TO DIMENSIONALLY LOCATE HOLLOW METAL DOOR FRAMES UNLESS OTHERWISE NOTED.



DOOR LOCATION DIAGRAM - TYPICAL
NOT TO SCALE

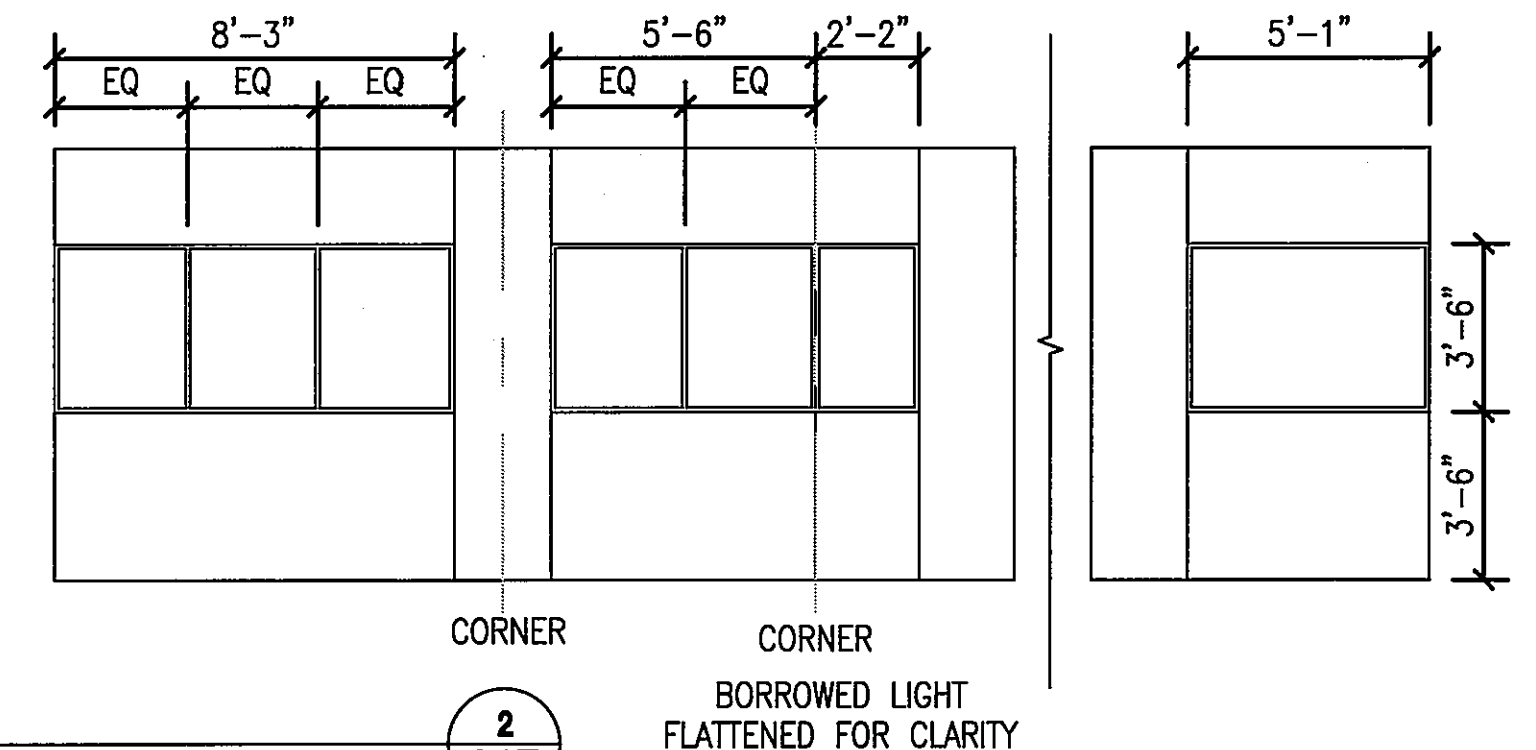
3
1-A7



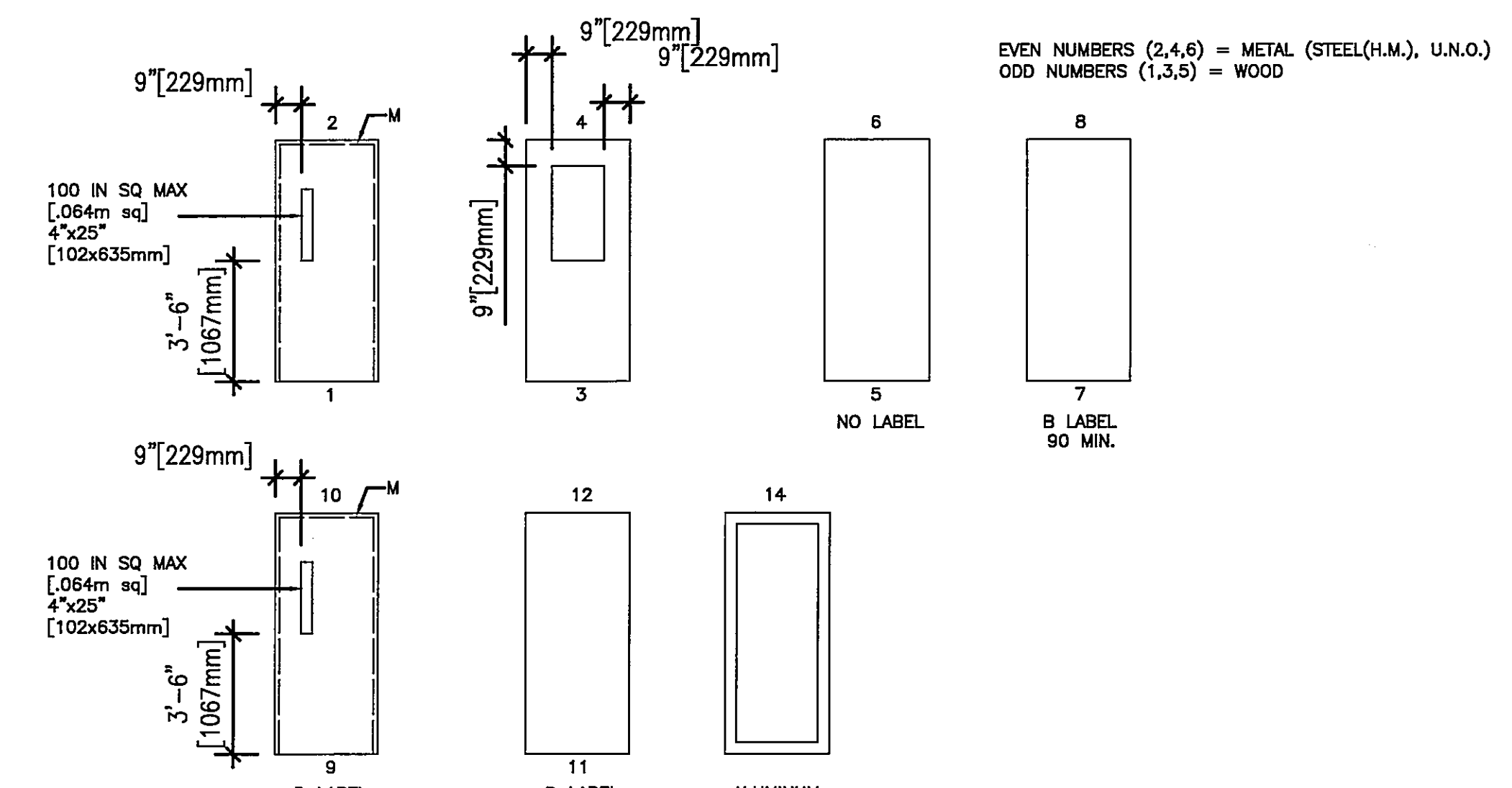
FRAME TYPE
NOT TO SCALE

GENERAL NOTES

- A. DOOR FRAMES IN MASONRY OPENINGS SHALL BE SLUGGED WITH GROUT. ALL OTHER DOOR FRAMES SHALL BE STUFFED WITH THERMAL INSULATION TO HELP SOUND DEADEN THE FRAME.
- B. ALL DOOR FRAMES SHALL HAVE CONDUIT FOR FUTURE OR CURRENT ELECTRICAL NEEDS ROUGHED-IN.



2
1-A7

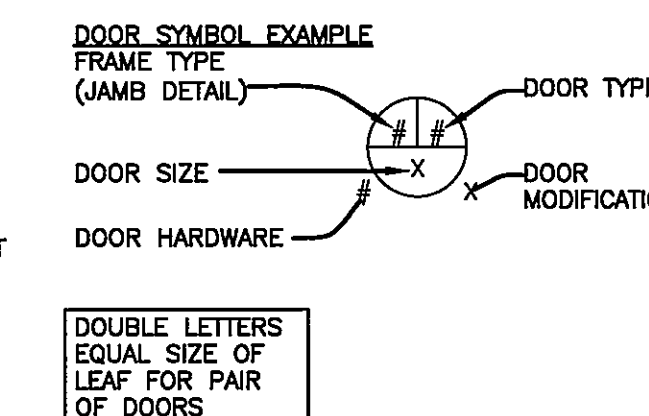


DOOR TYPES
NOT TO SCALE

1
1-A7

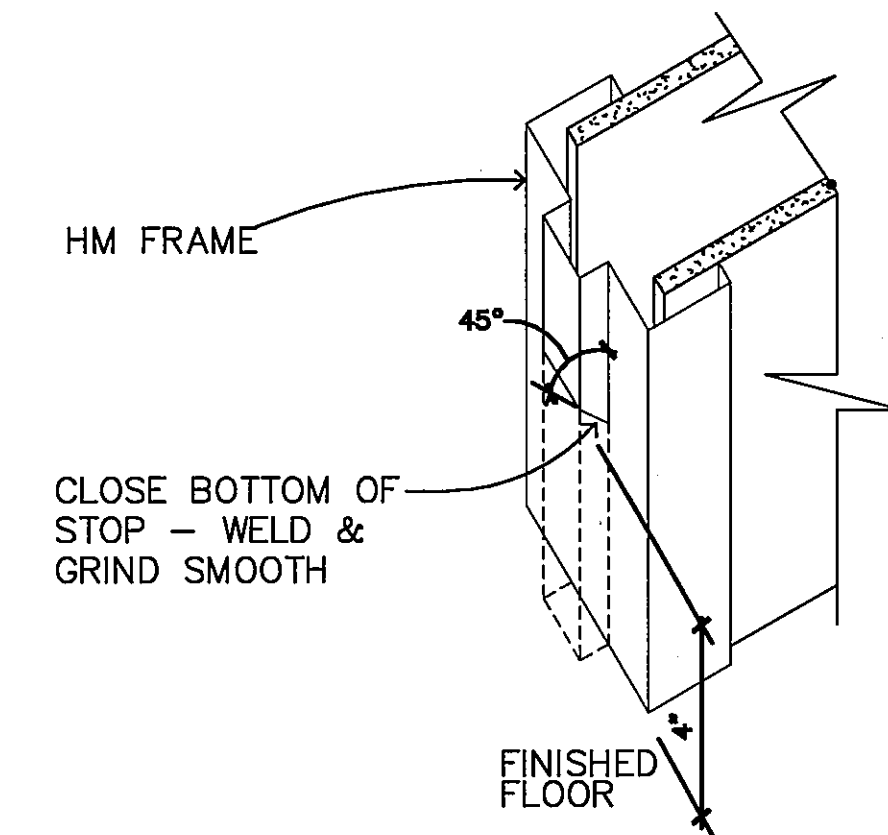
DOOR SIZES									
MK	WIDTH		HEIGHT		MK	WIDTH		HEIGHT	
	IN	[mm]	IN	[mm]		IN	[mm]	IN	[mm]
A	1'-8"	[457]	6'-8"	[2032]	N	2'-0"	[610]	7'-0"	[2134]
B	2'-0"	[610]	6'-8"	[2032]	O	2'-2"	[660]	7'-0"	[2134]
C	2'-2"	[660]	6'-8"	[2032]	P	2'-4"	[711]	7'-0"	[2134]
D	2'-4"	[711]	6'-8"	[2032]	Q	2'-6"	[762]	7'-0"	[2134]
E	2'-6"	[762]	6'-8"	[2032]	R	2'-8"	[813]	7'-0"	[2134]
F	2'-8"	[813]	6'-8"	[2032]	S	3'-0"	[914]	7'-0"	[2134]
G	2'-10"	[864]	6'-8"	[2032]	T	3'-4"	[1016]	7'-0"	[2134]
H	3'-0"	[914]	6'-8"	[2032]	U	3'-6"	[1067]	7'-0"	[2134]
I	3'-2"	[965]	6'-8"	[2032]	V	3'-8"	[1118]	7'-0"	[2134]
J	3'-4"	[1016]	6'-8"	[2032]	W	3'-10"	[1168]	7'-0"	[2134]
K	3'-6"	[1118]	6'-8"	[2032]	X	4'-0"	[1219]	7'-0"	[2134]
L	3'-10"	[1168]	6'-8"	[2032]	Y	3'-4"	[914]	8'-0"	[2438]

- DOOR MODIFICATIONS
- A LAMINATED GLASS
 - D DOUBLE GLAZED
 - H ELECTRIC HOLD
 - L LOUVER
 - LP LIGHT PROOF LOUVER
 - M MECH. SEAL FOR LIGHT PROOF & SOUND RETARDING DOOR
 - P PETG/ACROVYN DOOR
 - T TEMPERED GLASS
 - U UNDERCUT 1" [25mm]
 - V LEAD GLASS
 - F FINE RATED GLAZING
 - C CARD READER
 - FH FOLD FLAT HINGES



- LEGEND (SEE ELEVATIONS)
- GLASS OR LOUVER REQUIRED BY MODIFICATION
 - GLASS OR LOUVER REQUIRED BY ELEVATION TYPE

- NOTES:
- ALL DOORS SHALL BE FLUSH - 1/4" [4mm] THICK UNLESS NOTED OTHERWISE.
 - TOP AND SIDE RAILS SHALL BE 9" [229mm] MINIMUM. BOTTOM RAILS SHALL BE 12" [305mm] MINIMUM.
 - DOOR TYPES 7, 8, AND 9 SHALL NOT BE USED FOR OPPOSING DOORS.
 - DOOR TYPES MARKED WITH A "-" (DASH SYMBOL), REPRESENT EXISTING DOORS TO REMAIN. IN ADDITION, EXISTING DOORS TO REMAIN WILL NOT HAVE A DOOR HARDWARE NUMBER OR A DOOR MODIFICATION LETTER BELOW THE CIRCULAR SYMBOL. SEE "DOOR SYMBOL EXAMPLE" ABOVE.
 - EVEN NUMBERS ARE METAL; ODD NUMBERS ARE WOOD.
 - VERIFY EXISTING OPENING IN LOCATIONS WHERE DOOR IS TO BE REPLACED.
 - SEE SPECIFICATION SECTION 08 71 00 FOR DOOR HARDWARE.
 - NOT ALL DOORS WILL HAVE A DOOR MODIFICATION LETTER. ONLY THE DOORS THAT APPLY TO A MODIFICATION ON THE "DOOR MODIFICATIONS" LIST WILL HAVE A LETTER AT THE LOWER RIGHT OF THE CIRCULAR DOOR SYMBOL. SEE "DOOR SYMBOL EXAMPLE" ABOVE.



HOLLOW METAL FRAMES - HOSPITAL STOPS
NOT TO SCALE

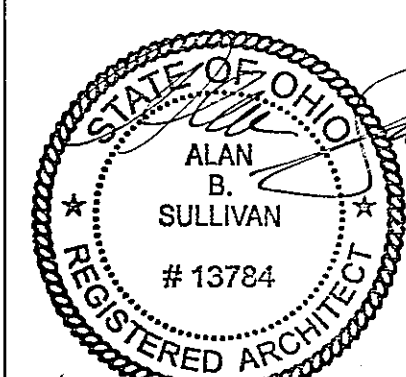
4
1-A7

FULLY SPRINKLERED BUILDING
BID DOCUMENTS

CONSULTANTS:



700 BROADWAY STREET
CINCINNATI, OH 45202-6010
PHONE: 513.621.6211
FAX: 513.621.6530



ARCHITECT/ENGINEERS:



PO BOX 436223 Louisville, Kentucky 40253 - PH: 502.339.8511 - www.paradigmusa.com

Drawing Title:
DOOR SCHEDULE AND DETAILS

Approved: Project Director

Project Title:
SURGICAL SUPPORT AND LOCKERS

Location: IOWA CITY VAMC
601 HIGHWAY 6 WEST, IOWA CITY, IOWA 52246-2208

Date: 07-13-12

Checked: SULLIVAN

Drawn: SAID/BRUNNER

Project Number:
636A8-11-011

Building Number:
1

Drawing Number:
1-A17

Office of
Construction
and Facilities
Management

