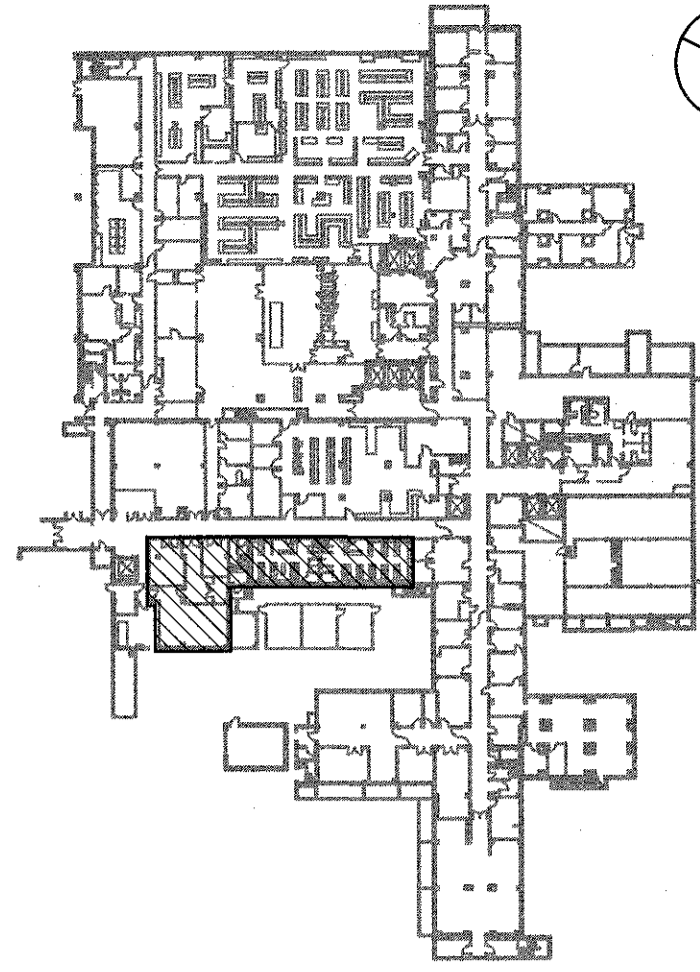


1-1E4

1. REFER TO SHEET 1-E1 FOR LEGEND, ABBREVIATIONS, AND GENERAL NOTES.
2. FOR SWITCHED EMERGENCY EGRESS LIGHTING CONNECTED TO A LIFE SAFETY CIRCUIT, FURNISH AND INSTALL A LIGHTING CONTROL BYPASS DEVICE. BASIS OF DESIGN: FUNCTIONAL DEVICES, INC. #ESRBE277C (OR APPROVED EQUIVALENT PRODUCT). LOCATE THE DEVICE INSIDE OF OR ON TOP OF THE LUMINAIRE BALLAST COMPARTMENT. WHERE NIGHT LIGHTS (N/L) ARE INDICATED THERE IS NEITHER CONTROL NOR A LIGHTING CONTROL BYPASS DEVICE.
3. WHERE HATCHED EMERGENCY EGRESS LIGHTING AND EXIT SIGNS ARE INDICATED, CONNECT TO AVAILABLE 20A/1P CIRCUIT IN LIFE SAFETY PANEL 11S LOCATED IN ROOM 1N02.
4. CIRCUIT NUMBERS SHOWN NEXT TO LIGHTING CONTROLS OR LUMINAIRES INDICATE PANEL AND CIRCUIT USED TO POWER LIGHTING IN THE AREA SHOWN.
5. PANEL B01H IS LOCATED IN CORRIDOR BCW01.

LUMINAIRE SCHEDULE				
TYPE	MANUFACTURER/CATALOG NUMBER	LAMP	REMARKS	
A	MARK POR24-09-2T5-EBPR-277	2-FP28/841/ECO	2 LAMP, 2'x4' FLUORESCENT TROFFER RECESSED INDIRECT	
B	MARK POR24-09-2T5HO-ESB80-277	2-FP54/841/ECO	2 LAMP, 2'x4' FLUORESCENT TROFFER RECESSED INDIRECT	
C	LITHONIA ZSP8 G 232 A12 MVOLT 6EB10IS	2-F032/841/ECO	2 LAMP, 2'x4' FLUORESCENT TROFFER RECESSED	
D	LITHONIA ZSP8 G 432 A12 MVOLT 6EB10IS	4-F032/841/ECO	4 LAMP, 2'x4' FLUORESCENT TROFFER RECESSED	
E	LITHONIA C132 MVOLT	1-F032/841/ECO	1 LAMP, 1'x4' FLUORESCENT STRIP FIXTURE	
F	PRESCOLITE LF4LED-4LFLED7 35K	LED	4" ARCHITECTURAL RECESSED LED DOWNLIGHT	
G	PRESCOLITE LF4LED-4LFLED5 35K	LED	4" ARCHITECTURAL RECESSED LED DOWNLIGHT	
H	LITHONIA LP8FN 32T8T 8LF73 MVOLT	1-CF32/841/ECO	DEAD FRONT RECESSED DOWNLIGHT FOR SHOWER LOCATIONS	
J	LITHONIA XWL232 MVOLT	2-F032/841/ECO	2 LAMP SURFACE MOUNTED FLUORESCENT FIXTURE FOR WET LOCATION IN CART WASH ROOM	
L	LITHONIA 11872RE MVOLT 6EB	1-F017/841/ECO	1 LAMP FLUORESCENT WALL MOUNTED VANITY LIGHT. ELECTRONIC INSTANT-START BALLAST	
M	PRESCOLITE D6LED3-DIM-6D9LED340K9FL35B24	LED	6" RECESSED LED DOWNLIGHT	
N	COMA 1X120' 56-60011A	INTEGRATED LED	LED ACCENT FIXTURE	
P	LITHONIA 10844RET5 BNP U	2-FP28/841/ECO	2 LAMP, 7"x48" WALL MOUNTED ABOVE MIRROR WINGED VANITY FIXTURE	
Q	COLUMBIA UC48-132-U-F0735	1-F032/841/ECO	6"x48" UNDERCABINET LIGHT	
X1	COMPASS CSXWREB3	INTEGRAL LED	SINGLE FACE, LED EXIT SIGN	
X2	COMPASS CSXWREB3	INTEGRAL LED	DOUBLE FACE, LED EXIT SIGN WITH DIRECTIONAL ARROWS	
NOTES: 1. MANUFACTURERS LISTED REPRESENT BASIS OF DESIGN. PROVIDE EQUIVALENT APPROVED PRODUCTS.				

NOTES:
1. MANUFACTURERS LISTED REPRESENT BASIS OF DESIGN. PROVIDE EQUIVALENT APPROVED PRODUCTS.



KEY PLAN
NOT TO SCALE
FULLY SPRINKLERED BUILDING
BID DOCUMENTS

PARADIGM
ENGINEERS AND CONSTRUCTORS

PO BOX 436223 Louisville, Kentucky 40253 - PH: 502.339.8511 - www.paradigmusa.com

Location: IOWA CITY VAMC

Drawn:

E4

Office of
Construction
and Facilities
Management

Department of