

FOURTH FLOOR LIGHTING PLAN
1/8" = 1'-0"

NOTES

1. REFER TO SHEET 1-E1 FOR LEGEND, ABBREVIATIONS, AND GENERAL NOTES.

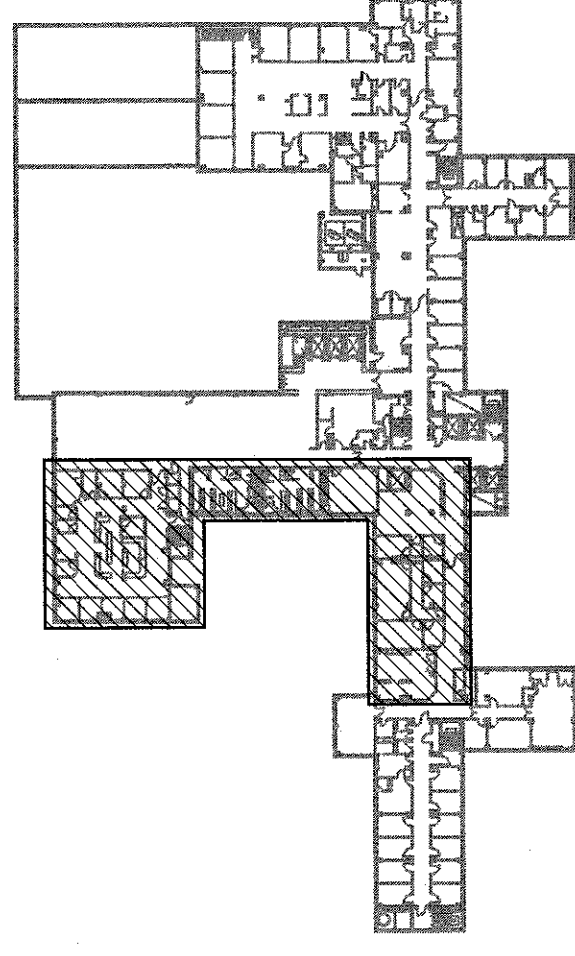
2. FOR SWITCHED EMERGENCY EGRESS LIGHTING CONTROLS, LOCATED NEXT TO THE LIGHTING CONTROL BYPASS DEVICE, INSTALL A LIGHTING DEVICES, INC. #ESRBE277C OR APPROVED EQUIVALENT PRODUCT). LOCATE THE DEVICE INSIDE OF OR ON TOP OF THE UNITARY WALL MOUNTMENT WHERE NIGHT LIGHTS; (N/L) ARE INSTALLED THERE IS NEITHER CONTROL NOR A LIGHTING CONTROL BYPASS DEVICE.
3. WHERE HATCHED EMERGENCY EGRESS LIGHTING AND EXIT SIGNS ARE INDICATED, CONNECT TO CIRCUIT 8 IN LIFE SAFETY PANEL L4. LOCATED IN ROOM 4N01.
4. CIRCUIT NUMBERS SHOWN NEXT TO LIGHTING CONTROLS OR LUMINAIRES INDICATE PANEL AND CIRCUIT USED TO POWER LIGHTING IN THE AREA SHOWN.

KEY NOTES

1 NEW PANEL LOCATIONS

LUMINAIRE SCHEDULE				
TYPE	MANUFACTURER/CATALOG NUMBER	LAMP		REMARKS
A	MARK POR24-G9-2T5-EBPR-277	2-FP28/841/ECO		2 LAMP, 2'x4' FLUORESCENT TROFFER RECESSED INDIRECT
B	MARK POR24-G9-2T5HO-ESB80-277	2-FP54/841/ECO		2 LAMP, 2'x4' FLUORESCENT TROFFER RECESSED INDIRECT
C	LITHONIA ZSP8 G 232 A12 MVOLT GEB10IS	2-F032/841/ECO		2 LAMP, 2'x4' FLUORESCENT TROFFER RECESSED
D	LITHONIA ZSP8 G 432 A12 MVOLT GEB10IS	4-F032/841/ECO		4 LAMP, 2'x4' FLUORESCENT TROFFER RECESSED
E	LITHONIA C132 MVOLT	1-F032/841/ECO		1 LAMP, 1'x4' FLUORESCENT STRIP FIXTURE
F	PRESSCOLITE LF4LED-4LFLED7 35K	LED		4" ARCHITECTURAL RECESSED LED DOWNLIGHT
G	PRESSCOLITE LF4LED-4LFLED5 35K	LED		4" ARCHITECTURAL RECESSED LED DOWNLIGHT
H	LITHONIA LP8FN 32TRT 8LF73 MVOLT	1-OF32/841/ECO		DEAD FRONT RECESSED DOWNLIGHT FOR SHOWER LOCATIONS
J	LITHONIA XWL232 MVOLT	2-F032/841/ECO		2 LAMP SURFACE MOUNTED FLUORESCENT FIXTURE FOR WET LOCATION IN CART WASH ROOM
L	LITHONIA 11872RE MVOLT GEB	1-F017/841/ECO		1 LAMP FLUORESCENT,WAL MOUNTED VANITY LIGHT, ELECTRONIC INSTANT-START BALLAST
M	PRESSCOLITE D6LED3-DIM-6D9LED340K9FL35B24	LED		6" RECESSED LED DOWNLIGHT
N	COMA 1X120" 56-60011A	INTEGRATED LED		LED ACCENT FIXTURE
P	LITHONIA 10844RET5 BNP U	2-FP28/841/ECO		2 LAMP, 7"x48" WALL MOUNTED WINGED VANITY FIXTURE
Q	COLUMBIA UC48-132-U-F0735	1-F032/841/ECO		6"x48" UNDERCABINET LIGHT
X1	COMPASS CSXWREB3	INTEGRAL LED		SINGLE FACE, LED EXIT SIGN
X2	COMPASS CSXWREB3	INTEGRAL LED		DOUBLE FACE, LED EXIT SIGN WITH DIRECTIONAL ARROWS
NOTES: 1. MANUFACTURERS LISTED REPRESENT BASIS OF DESIGN. PROVIDE EQUIVALENT APPROVED PRODUCTS.				

NOTES:
1. MANUFACTURERS LISTED REPRESENT BASIS OF DESIGN. PROVIDE EQUIVALENT APPROVED PRODUCTS.

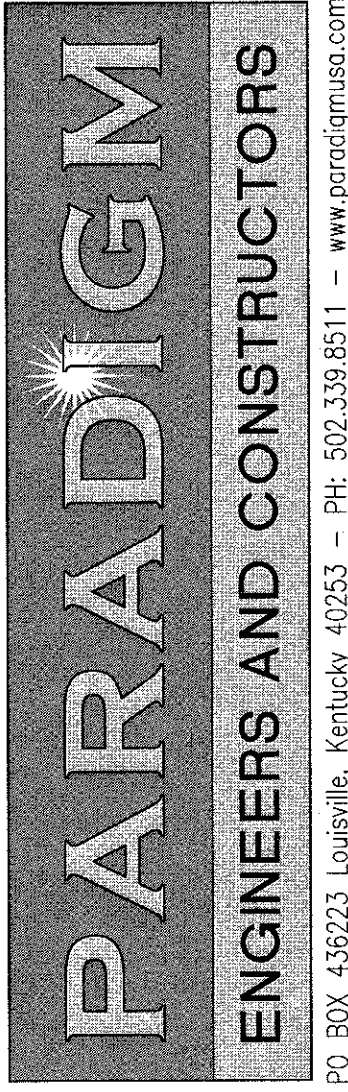


KEY PLAN
NOT TO SCALE
FULLY SPRINKLERED BUILDING
BID DOCUMENTS

CONSULTANTS:

[illegible]

ARCHITECT/ENGINEERS



Revisions: A FORM 08-6231

P.O. BOX 436223 Louisville, Kentucky 40253 - PH: 502.339.8511 - www.paradigmusa.com

Drawing Title: ELECTRICAL LIGHTING PLAN

Approved: Project Director

Project Title:	SURGICAL SUPPORT AND LOCKERS		
Project Number:	636AP-11-011		
Building Number:	1		
Location:	IOWA CITY VAMC 601 HOWARD & WEST, IOWA CITY, IOWA 52266-2208		
Date:	07-19-12	Checked: KLP	Drawn: MFS
Drawing Number:	1-E5		

**Office of
Construction
and Facilities
Management**

Department of
Veterans Affairs