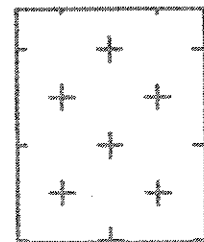


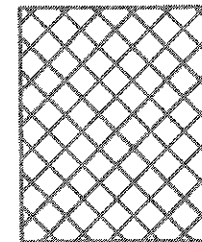
PHASE 1

REMOVE ALL EXISTING ELECTRICAL LIGHTING, POWER, ETC. COMPONENTS LOCATED IN THIS AREA, UNLESS OTHERWISE NOTED ON RESPECTIVE AREA PLANS.



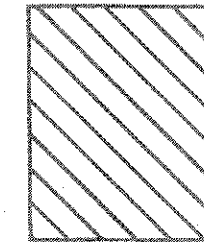
PHASE 2

REMOVE ALL EXISTING ELECTRICAL LIGHTING, POWER, ETC. COMPONENTS LOCATED IN THIS AREA, UNLESS OTHERWISE NOTED ON RESPECTIVE AREA PLANS.



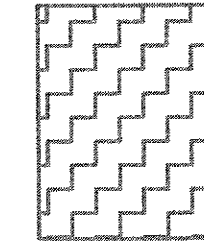
PHASE 3

REMOVE ALL EXISTING ELECTRICAL LIGHTING, POWER, ETC. COMPONENTS LOCATED IN THIS AREA, UNLESS OTHERWISE NOTED ON RESPECTIVE AREA PLANS.



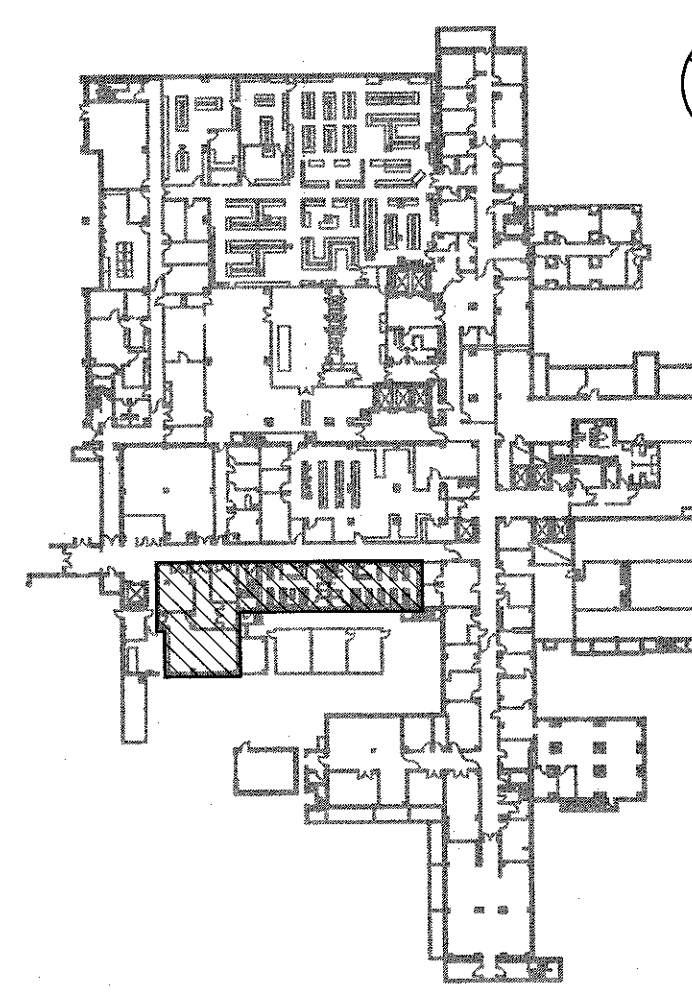
PHASE 4

REMOVE ALL EXISTING ELECTRICAL LIGHTING, POWER, ETC. COMPONENTS LOCATED IN THIS AREA, UNLESS OTHERWISE NOTED ON RESPECTIVE AREA PLANS.

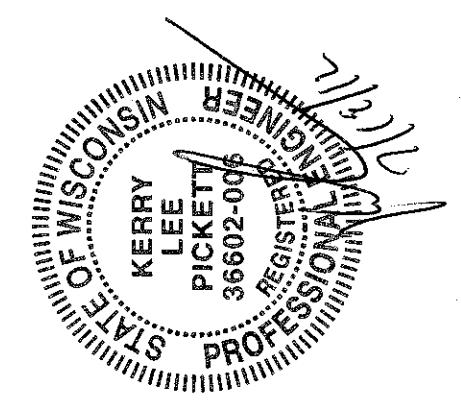
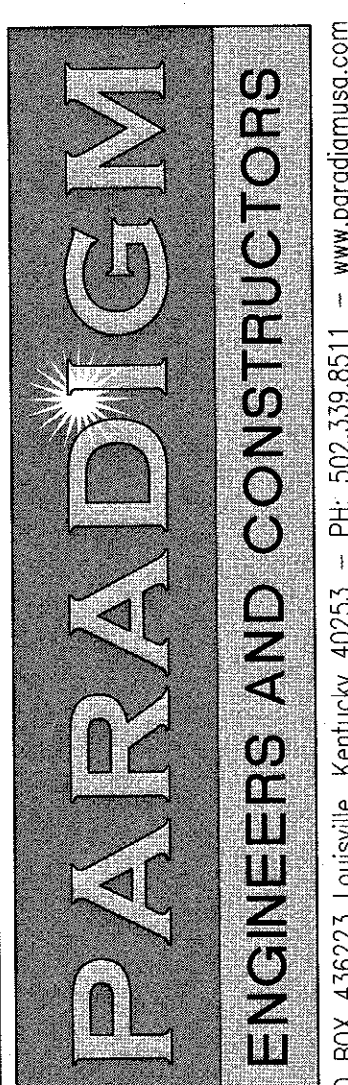



NOTES

1. REFER TO SHEET 1-E1 FOR LEGEND, ABBREVIATIONS, SCHEDULES AND GENERAL NOTES.
2. REFER TO SHEET 1-A6 FOR WORK AREA LOCATIONS AND RESPECTIVE ELECTRICAL AREA PLANS FOR MORE DETAILS.



KEY PLAN
NOT TO SCALE
FULLY SPRINKLERED BUILDING
BID DOCUMENTS

CONSULTANTS:	ARCHITECT/ENGINEERS:				Project Title: SURGICAL SUPPORT AND LOCKERS	Project Number: 636A8-11-011
						Building Number: 1
Revisions:					Location: IOWA CITY VAMC 601 HENRY STREET, IOWA CITY, IA 52242-2208	Drawing Number: 1-E4
						Date: 07-15-12
				Checked: KLP		Drawn: MPS
				Approved Project Director:		

Office of Construction and Facilities Management
Department of Veterans Affairs