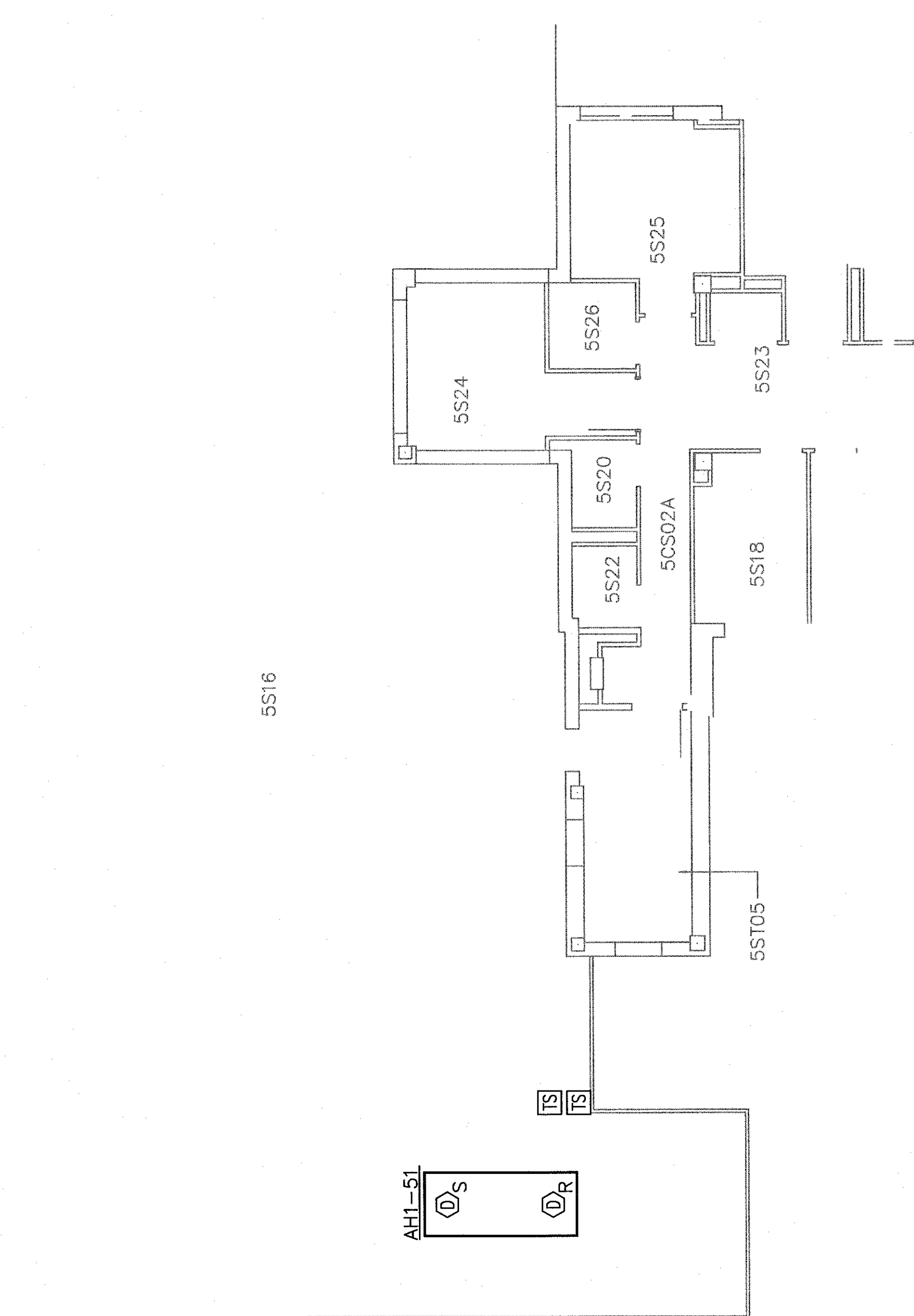


INPUT DEVICE:		OUTPUT:				
SMOKE DETECTOR	X	SOUND GENERAL BUILDING ALARM	X	NOTIFY FIRE DEPARTMENT	X	INITIAL SUPERVISORY SIGNAL
DUCT DETECTOR	X		X	X	X	SHUT DOWN AIR HANDLER OR FAN
						CLOSE SMOKE BARRIER DOORS ON THE FLOOR
	X					OPEN LOCKED EGRESS DOORS ON THE FLOOR



FIFTH FLOOR FIRE ALARM PLAN

FOURTH FLOOR FIRE ALARM PLAN

NOTES

1. CONNECT NEW FIRE ALARM INITIATION DEVICES TO EXISTING INITIATION LOOP OF EXISTING FIRE ALARM SYSTEM.
 2. EXISTING NEW FIRE ALARM SIGNALING DEVICES TO EXISTING SIGNALING CIRCUITS. PROVIDE CIRCUIT EXPANDER AND AMPLIFIER AS MAY BE REQUIRED. CONFIRM CAPACITY AND SUBMIT FOR APPROVAL.
 3. REFER TO PHASING PLAN FOR PROJECT PHASING REQUIREMENTS.
 4. REFER TO FIRE PROTECTION SHEETS FOR SPRINKLER ZONE LOCATIONS.
 5. FURNISH, INSTALL, AND CONNECT NEW BLUE LIGHTS OVER NEW FIRE EXTINGUISHER CABINETS. REFER TO EXISTING INSTALLATIONS IN OTHER BUILDING AREAS FOR MOUNTING HEIGHT, CONNECTION METHOD, AND REQUIRED EQUIPMENT TYPE. MATCH EXISTING.
- FIRE ALARM SYMBOLS**
- | | | |
|-----|-----------------------------------|--|
| 15 | AUDIO/VISUAL ALARM | COMBINATION SPEAKER WITH ADJUSTABLE CANDELA STROBE LIGHT. WALL MOUNTED 90° AFF TO TOP. CEILING MOUNT WHERE INDICATED. NUMBER INDICATES CANDELA RATING OF STROBE. 'WP' INDICATES WEATHERPROOF UNIT. |
| [F] | | |
| 15 | VISUAL ALARM | ADJUSTABLE CANDELA STROBE LIGHT. WALL MOUNTED 90° AFF TO TOP. CEILING MOUNT WHERE INDICATED. NUMBER INDICATES CANDELA RATING OF STROBE. |
| [D] | | |
| [F] | DOUBLE ACTION MANUAL PULL STATION | MOUNTED 48" AFF TO CENTER. |

FIRE ALARM SYMBOLS

- 15 **A** AUDIO/VISUAL ALARM COMBINATION SPEAKER WITH ADJUSTABLE CANDELA STROBE LIGHT: WALL MOUNTED 90° AFF TO TOP, CEILING MOUNT WHERE INDICATED. NUMBER INDICATES CANDELA RATING OF STROBE. WP INDICATES WEATHERPROOF UNIT.
- 15 **F** VISUAL ALARM, ADJUSTABLE CANDELA STROBE LIGHT: WALL MOUNTED 90° AFF TO TOP, CEILING MOUNT WHERE INDICATED. NUMBER INDICATES CANDELA RATING OF STROBE.
- F** DOUBLE ACTION MANUAL PULL STATION. MOUNTED 48" AFF TO CENTER.
- S** SMOKE DETECTOR
- D** DUCT SMOKE DETECTOR
 - 'S' INDICATES LOCATED IN SUPPLY PLENUM
 - 'R' INDICATES LOCATED IN RETURN PLENUM
- T** REMOTE TEST STATION WITH RESET FOR DUCT SMOKE DETECTOR

KEY PLAN
NOT TO SCALE
FULLY SPRINKLERED BUILDING
BID DOCUMENTS

CONSULTANTS:

ARCHITECT/ENGINEERS:

PARADIGM
ENGINEERS AND CONSTRUCTORS

20 JUL 2012
STATE OF KENTUCKY
BLAINE
CAMEL
VAN GANSBEKE
24,788
LICENSED
PROFESSIONAL ENGINEER
Mham

Drawing Title:
FIRE ALARM PLAN

Project Title:
SURGICAL SUPPORT AND LOCKERS

Project Number:
636A8-11-011

Building Number:
1

Drawing Number:

1-FA2

Department of
Veterans Affairs