

FCA—REPLACE MIXING BOXES, BLDG. 15

PROJECT NUMBER

539—09—109

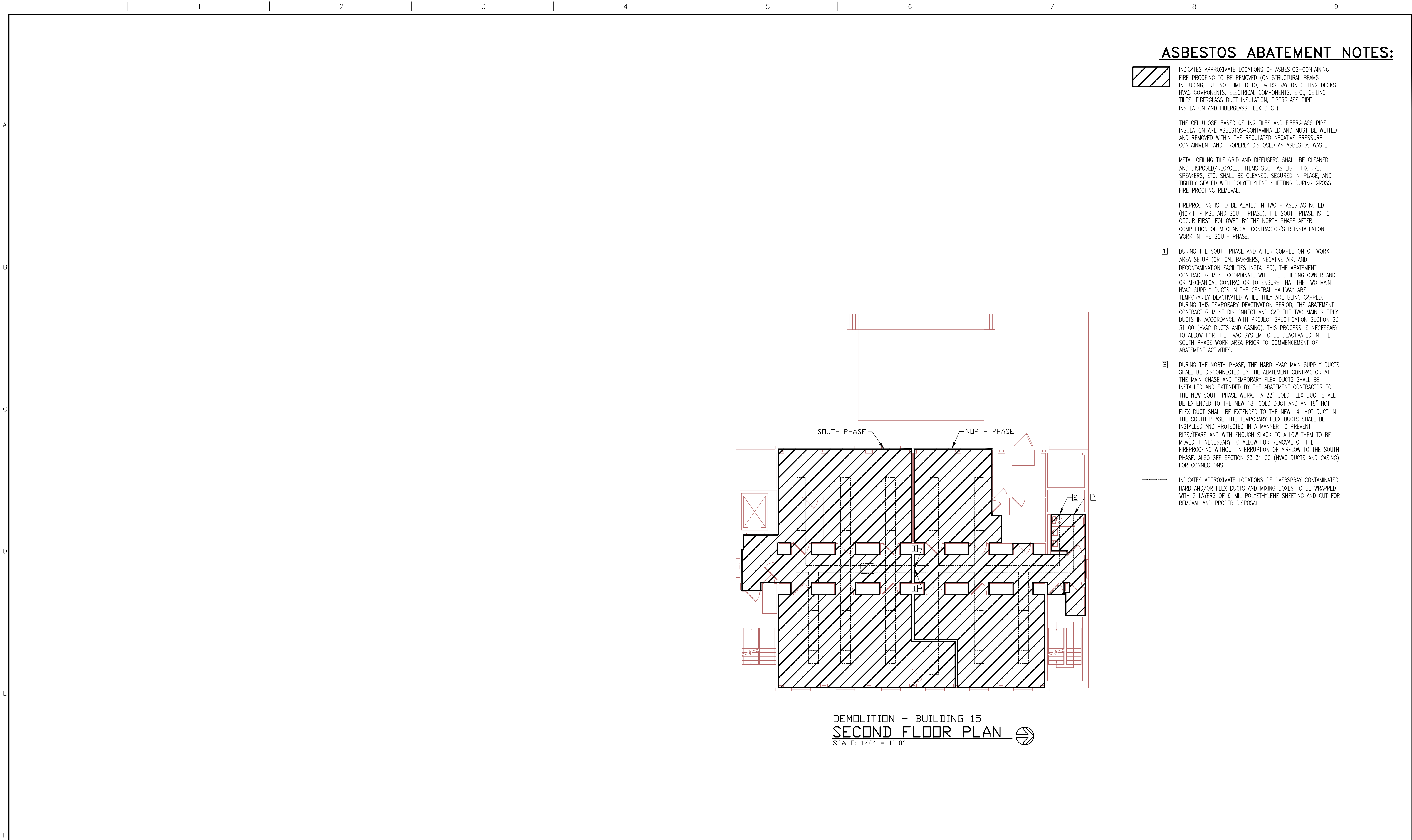
DEPARTMENT OF VETERANS AFFAIRS
MEDICAL CENTER
CINCINNATI, OHIO

INDEX OF DRAWINGS

| | |
|-----|--|
| T1 | TITLE SHEET |
| A1 | PARTIAL FIRST FLOOR PLAN — ASBESTOS ABATEMENT PLAN |
| H1 | PARTIAL FIRST FLOOR PLAN — DEMOLITION/NEW WORK |
| H2 | PARTIAL SECOND FLOOR PLAN — DEMOLITION/NEW WORK |
| H3 | SCHEDULES AND DETAILS |
| TC1 | TEMPERATURE CONTROLS AND SEQUENCE OF OPERATION |

BID DOCUMENTS

| | | | | | | | | | | | | |
|---|--|-------------------------|--|---|---|--|---|--|---|--|---|---|
| <div>BID SET</div> <div>Revisions</div> | | <div>CONSULTANTS:</div> | | <div><div>STATE OF OHIO</div><div>ROBERT L. STAN</div><div>45589</div><div>REGISTERED PROFESSIONAL ENGINEER</div></div> | <div>ENGINEER:</div> <div>STAN</div> <div>SAI JOB #574</div> <div>7887 Washington Village Drive Dayton, Ohio 45459 phone: 937 438-0177 fax: 937 438-0183 copyright 2009 All rights reserved</div> | | <div>Drawing Title</div> <div>TITLE SHEET</div> <div>Approved: Project Director</div> | | <div>Project Title</div> <div>FCA-Replace Mixing Boxes, Bldg. 15</div> <div>-</div> <div>-</div> <div>Location</div> <div>Cincinnati, Ohio</div> <div>Date</div> <div>July 20, 2012</div> <div>Checked</div> <div>FJB</div> <div>Drawn</div> <div>MJK</div> | | <div>Project Number</div> <div>539-09-109</div> <div>Building Number</div> <div>Bldg. 15</div> <div>Drawing Number</div> <div>T1</div> <div>Dwg. 1 of 6</div> | <div>Office of Construction and Facilities Management</div> <div> Department of Veterans Affairs</div> |
|---|--|-------------------------|--|---|---|--|---|--|---|--|---|---|



BID DOCUMENTS

| | | | | | | | | | | | | |
|---|--|--|--|--|---|--|--|--|---|--|---|---|
| <div>BID SET</div> <div>Revisions</div> | | <div>CONSULTANTS:</div> <div>Terracon Consulting Engineers and Scientists</div> <div>611 LUNKEN PARK DRIVE PH. (513) 321-5816</div> <div>CINCINNATI, OHIO 45226 FAX: (513) 321-4540</div> | | <div></div> | <div>ENGINEER:</div> <div>STAN Engineers</div> <div>SAI JOB #574 7887 Washington Village Drive Dayton, Ohio 45459 phone: 937 438-0177 fax: 937 438-0183 copyright 2009 All rights reserved</div> | | <div>Drawing Title</div> <div>Partial First Floor Plan - Asbestos Abatement Plan</div> <div>Approved: Project Director</div> | | <div>Project Title</div> <div>FCA-Replace Mixing Boxes, Bldg. 15</div> <div>-</div> <div>-</div> <div>Location</div> <div>Cincinnati, Ohio</div> <div>Date</div> <div>JULY 20, 2012</div> <div>Checked</div> <div>FJB</div> <div>Drawn</div> <div>MJK</div> | | <div>Project Number</div> <div>539-09-109</div> <div>Building Number</div> <div>Bldg. 15</div> <div>Drawing Number</div> <div>A1</div> <div>Dwg. 2 of 6</div> | <div>Office of Construction and Facilities Management</div> <div> Department of Veterans Affairs</div> |
|---|--|--|--|--|---|--|--|--|---|--|---|---|

A

B

C

D

E

F

A

B

C

D

E

F

LEGEND:

SYMBOLS

- DEMOLITION PLAN NOTE
- NEW WORK PLAN NOTE
- TERMINAL UNIT IDENTIFICATION
- ROOM THERMOSTAT - 60" A.F.F.
- REMOVE TO THIS POINT
- CONNECT TO EXISTING AT THIS POINT
- SUPPLY AIR DIFFUSER
- ACCESS DOOR
- ROOM NUMBER

DEMOLITION NOTES:

- REMOVE EXISTING DUAL DUCT TERMINAL UNIT, ASSOCIATED DUCTWORK, THERMOSTAT, AND CONTROLS.
- REMOVE CEILING TILE AND GRID. REINSTALL SAME AFTER INSTALLATION OF THE NEW UNITS. REPLACE ANY BROKEN CEILING TILES WITH MATCHING TILES.
- REMOVE PORTION OF EXISTING GYPSUM BOARD CEILING AND ACCESS DOOR(S) AS REQUIRED FOR THIS PROJECT. PREPARE REMAINING CEILING TO BE PATCHED AND FINISHED WITH MATCHING MATERIAL.
- EXISTING DIFFUSER LOCATED DIRECTLY BELOW TERMINAL UNIT TO BE REMOVED.
- REMOVE EXISTING SINGLE DUCT TERMINAL UNIT, ASSOCIATED DUCTWORK CONNECTIONS AND REHEAT COIL. EXISTING THERMOSTAT, CONTROLS, REHEAT COIL VALVE AND ACTUATORS TO REMAIN.

NEW WORK NOTES:

- PROVIDE NEW DUAL DUCT TERMINAL UNIT, ASSOCIATED DUCTWORK AND DIFFUSER. CAP UNUSED BRANCH TAKE-OFFS. SEE TERMINAL UNIT SCHEDULES FOR TYPE AND SIZING. PROVIDE RECTANGULAR-TO-ROUND DUCT ADAPTER FROM NEW TERMINAL UNIT TO SUPPLY DIFFUSER INLET.
- PROVIDE NEW THERMOSTAT AND ASSOCIATED CONTROLS FOR NEW TERMINAL UNIT(S). NEW BOX CONTROLS SHALL TIE INTO THE NEW JOHNSON CONTROLS BUILDING ENERGY MANAGEMENT SYSTEM. A PROJECT TO FURNISH AIR HANDLING UNIT CONTROLS IS TO BE COMPLETED UNDER A SEPARATE CONTRACT. CONTROLS CONTRACTOR TO COORDINATE THIS WORK WITH THAT PROJECT.
- PROVIDE NEW SINGLE DUCT TERMINAL UNIT, REHEAT COIL, AND ASSOCIATED CONNECTIONS. SEE TERMINAL UNIT SCHEDULES FOR TYPE AND SIZING. EXISTING CONTROLS, REHEAT VALVE AND ACTUATORS TO REMAIN.
- FURNISH AND INSTALL NEW 24" X 24" ACCESS DOOR TO ALLOW EASY ACCESS TO HOT WATER REHEAT PIPING SIDE OF THE TERMINAL UNIT. PAINT ACCESS DOORS TO MATCH CEILING.

GENERAL NOTES:

- THE BUILDING WILL BE OCCUPIED THROUGHOUT THE CONSTRUCTION. THE CONTRACTOR WILL ONLY BE ALLOWED TO WORK IN ONE ROOM AT A TIME ON THE FIRST FLOOR TO MINIMIZE DISTURBANCES TO THE ANIMALS AND OCCUPANTS. THE CONTRACTOR SHALL DEVELOP A COMPLETE SCHEDULE OF CONSTRUCTION FOR OWNER APPROVAL BY PRE-CONSTRUCTION MEETING. VA WILL BE GIVEN (2) WEEKS NOTICE PRIOR TO ANY AIR HANDLING UNIT SHUTDOWN.
- CONTRACTOR SHALL REMOVE LIGHT FIXTURES, ELECTRICAL CONDUIT, FIRE SPRINKLER HEADS OR ANY OTHER SURROUNDING INTERFERENCES FOR THE REMOVAL OF THE TERMINAL UNITS.
- HANDLE EXISTING PNEUMATIC LINES WITH CAUTION AS THEY ARE OLD AND FRAGILE. ANY PNEUMATIC LINES DAMAGED DURING CONSTRUCTION SHALL BE REPLACED IN-KIND.
- CONTRACTOR TO PROVIDE 120V CIRCUIT TO NEW TERMINAL UNIT CONTROL PANELS.
- TO PROTECT ANIMALS' HEALTH, AHU-31 AND ASSOCIATED TERMINAL UNITS SHOULD NOT FAIL TO FULL HEAT BUT INSTEAD TO FULL COOLING.
- WORK ON THE FIRST FLOOR REQUIRES THAT THE CONTRACTORS WILL WEAR SPECIAL SUITS (PROVIDED BY THE VA) BEFORE ENTERING THE FLOOR. THE CONTRACTOR NEEDS TO ALLOW TIME EACH DAY FOR THEIR EMPLOYEES TO DON THE PROTECTIVE GEAR.

INFECTION CONTROL NOTES:

- CONTRACTOR SHALL COMPLY WITH THE FOLLOWING ITEMS DURING ALL PHASES OF CONSTRUCTION:
 - A. DUE TO THE NATURE OF THE RESEARCH BEING DONE IN THIS BUILDING, THE CONTRACTOR SHALL SET UP, AS A DUST CONTROL MEASURE, A NEGATIVE PRESSURE MACHINE IN ROOMS WHERE WORK IS OCCURRING.
 - B. CONTRACTOR SHALL BUILD A CONTAINMENT WALL WITH HEPA FANS TO CONTROL EXFILTRATION WHILE PERFORMING WORK IN ANIMAL ROOMS ASSOCIATED WITH AHU-31.
 - C. PROVIDE ACTIVE MEANS TO PREVENT AIRBORNE DUST FROM DISPERSING INTO ATMOSPHERE.
 - D. WATER MIST WORK SURFACES TO CONTROL DUST WHILE CUTTING.
 - E. SEAL UNUSED DOORS WITH DUCT TAPE.
 - F. BLOCK OFF AND SEAL AIR VENTS.
 - G. PLACE DUST MAT AT ENTRANCE AND EXIT OF WORK AREA.
 - H. REMOVE OR ISOLATE HVAC SYSTEMS IN AREAS WHERE WORK IS BEING PERFORMED.
- BETWEEN EACH MAJOR PHASE AND UPON COMPLETION OF THE PROJECT THE CONTRACTOR SHALL:
 - A. WIPE WORK SURFACES WITH DISINFECTANT.
 - B. CONTAIN CONSTRUCTION WASTE BEFORE TRANSPORT IN TIGHTLY COVERED CONTAINERS.
 - C. WET MOP AND/OR VACUUM WITH HEPA FILTERED VACUUM BEFORE LEAVING WORK AREA.
 - D. REMOVE ISOLATION OF HVAC SYSTEM IN AREAS WHERE WORK IS BEING PERFORMED.

BID DOCUMENTS

DEMOLITION - BUILDING 15
FIRST FLOOR PLAN

SCALE: 1/8" = 1'-0"



NEW WORK - BUILDING 15
FIRST FLOOR PLAN

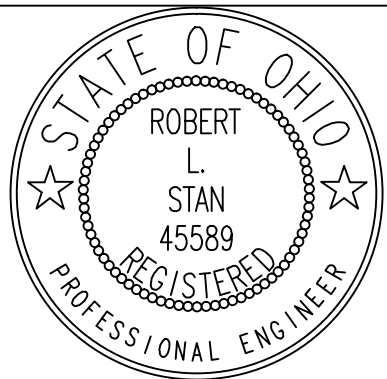
SCALE: 1/8" = 1'-0"



| | |
|-----------|---------|
| | |
| | |
| | |
| | |
| | |
| | |
| BID SET | 7-20-12 |
| Revisions | Date |

CONSULTANTS:

| |
|--|
| |
| |
| |
| |
| |
| |



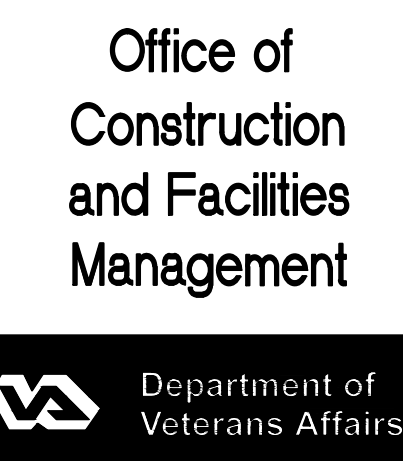
ENGINEER:

STAN
Engineers

SAI JOB #574
7887 Washington Village Drive
Dayton, Ohio 45459
phone: 937 438-0177 fax: 937 438-0183
copyright 2009 All rights reserved

| | |
|----------------------------|--|
| Drawing Title | Partial First Floor Plan - Demolition/New Work |
| Approved: Project Director | |

| | |
|-----------------|------------------------------------|
| Project Title | FCA-Replace Mixing Boxes, Bldg. 15 |
| Building Number | Bldg. 15 |
| Drawing Number | H1 |
| Date | JULY 20, 2012 |
| Checked | PJB |
| Drawn | MJK |
| Project Number | 539-09-109 |
| Dwg. 3 of 6 | |



SECOND FLOOR PHASING NOTES:

- 1 THE SOUTH PHASE SHALL BE COMPLETED FIRST. THE ABATEMENT CONTRACTOR SHALL CAP THE DUCT MAINS IN THE CORRIDOR AT THE DIVIDING LINE BETWEEN PHASES SO THAT THE DUCT MAINS IN THE NORTH PHASE WILL REMAIN ACTIVE WHILE THE SOUTH PHASE IS DONE.
- 2 ABATEMENT WILL BE COMPLETED FOR THE SOUTH PHASE.
- 3 NEW FIRE PROOFING INSTALLATION WILL BE COMPLETED FOR THE SOUTH PHASE.
- 4 ALL MECHANICAL AND FINISH WORK WILL BE COMPLETED FOR THE SOUTH PHASE.
- 5 THE ABATEMENT CONTRACTOR SHALL START THE NORTH PHASE BY CUTTING THE DUCT MAINS AS THEY LEAVE THE CHASE. THE ABATEMENT CONTRACTOR WILL INSTALL TEMPORARY FLEXIBLE DUCT THROUGH THROUGH THE NORTH PHASE AND CONNECT IT TO THE DUCT IN THE SOUTH PHASE SO THAT THE SOUTH PHASE IS PROVIDED WITH AIRFLOW AND CAN BE OCCUPIED WHILE ALL WORK IS COMPLETED IN THE NORTH PHASE.
- 6 ABATEMENT WILL BE COMPLETED FOR THE NORTH PHASE.
- 7 NEW FIRE PROOFING WILL BE COMPLETED FOR THE NORTH PHASE.
- 8 ALL MECHANICAL AND FINISH WORK WILL BE COMPLETED FOR THE NORTH PHASE.
- 9 TEMPORARY DUCTWORK WILL BE REMOVED AND PERMANENT CONNECTION OF THE NEW DUCT MAINS WILL BE MADE.

INFECTION CONTROL NOTES:

1. CONTRACTOR SHALL COMPLY WITH THE FOLLOWING ITEMS DURING ALL PHASES OF CONSTRUCTION:
A. DUE TO THE NATURE OF THE RESEARCH BEING DONE IN THIS BUILDING, THE CONTRACTOR SHALL SET UP, AS A DUST CONTROL MEASURE, A NEGATIVE PRESSURE MACHINE IN ROOMS WHERE WORK IS OCCURRING.
B. PROVIDE ACTIVE MEANS TO PREVENT AIRBORNE DUST FROM DISPERSING INTO ATMOSPHERE.
C. WATER MIST WORK SURFACES TO CONTROL DUST WHILE CUTTING.
D. SEAL UNUSED DOORS WITH DUCT TAPE.
E. BLOCK OFF AND SEAL AIR VENTS.
F. PLACE DUST MAT AT ENTRANCE AND EXIT OF WORK AREA.
G. REMOVE OR ISOLATE HVAC SYSTEMS IN AREAS WHERE WORK IS BEING PERFORMED.
2. BETWEEN EACH MAJOR PHASE AND UPON COMPLETION OF THE PROJECT THE CONTRACTOR SHALL:
A. WIPE WORK SURFACES WITH DISINFECTANT.
B. CONTAIN CONSTRUCTION WASTE BEFORE TRANSPORT IN TIGHTLY COVERED CONTAINERS.
C. WET MOP AND/OR VACUUM WITH HEPA FILTERED VACUUM BEFORE LEAVING WORK AREA.
D. REMOVE ISOLATION OF HVAC SYSTEM IN AREAS WHERE WORK IS BEING PERFORMED.

DEMOLITION NOTES:

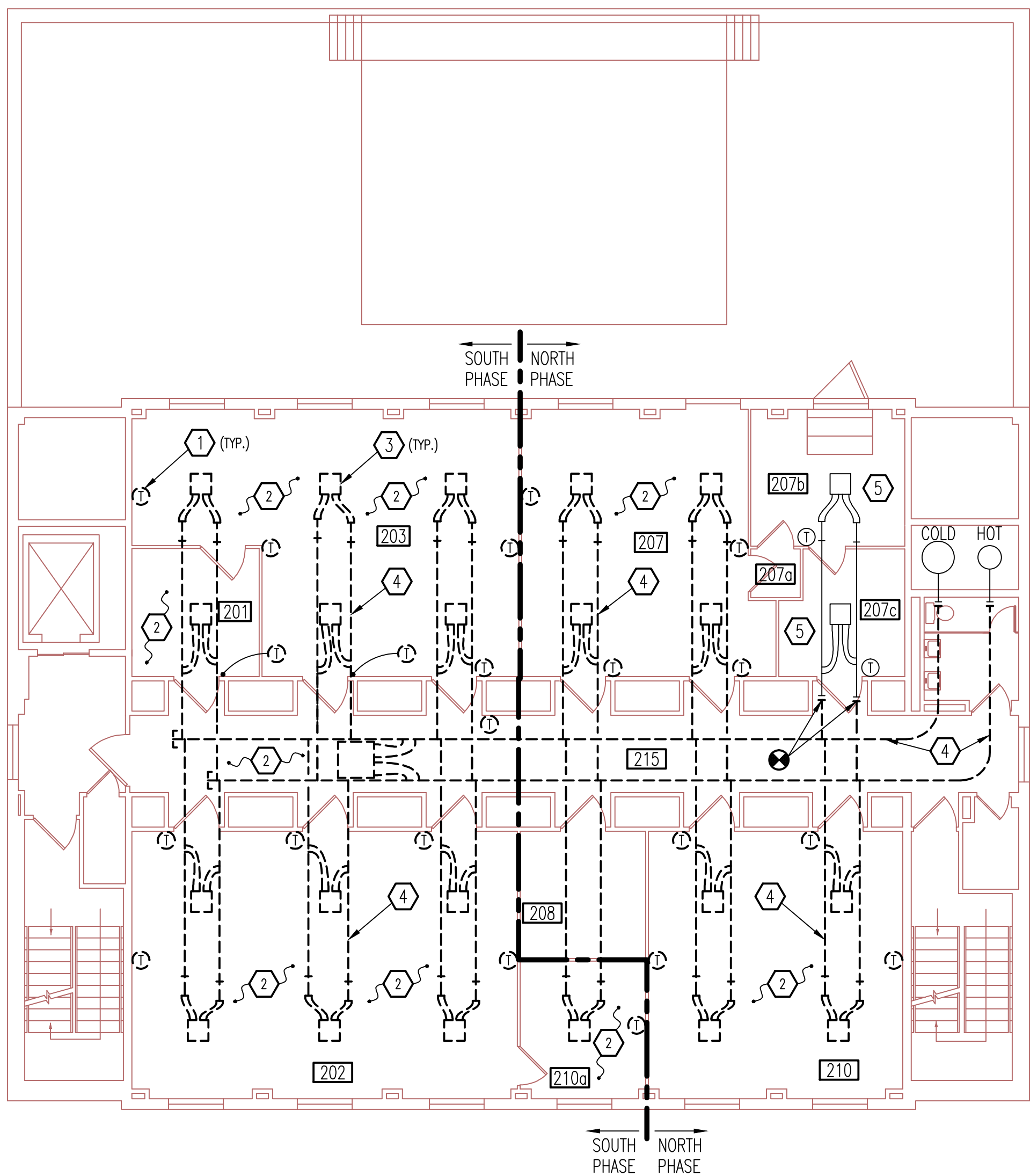
- 1 REMOVE EXISTING THERMOSTAT AND CONTROLS. SEE EXCEPTION, DEMOLITION NOTE NO. 5.
- 2 CEILING TILE AND GRID WILL BE REMOVED BY THE ABATEMENT CONTRACTOR PRIOR TO THE MECHANICAL WORK.
- 3 EXISTING DIFFUSERS AND TERMINAL UNITS WILL BE REMOVED AND DISCARDED BY THE ABATEMENT CONTRACTOR. SEE EXCEPTION, DEMOLITION NOTE NO. 5.
- 4 ALL DUCT WILL BE REMOVED AND DISCARDED BY THE ABATEMENT CONTRACTOR.
- 5 AREA UNAFFECTED BY THIS WORK, ALL EQUIPMENT, DUCT, ETC. TO REMAIN AS IS.

NEW WORK NOTES:

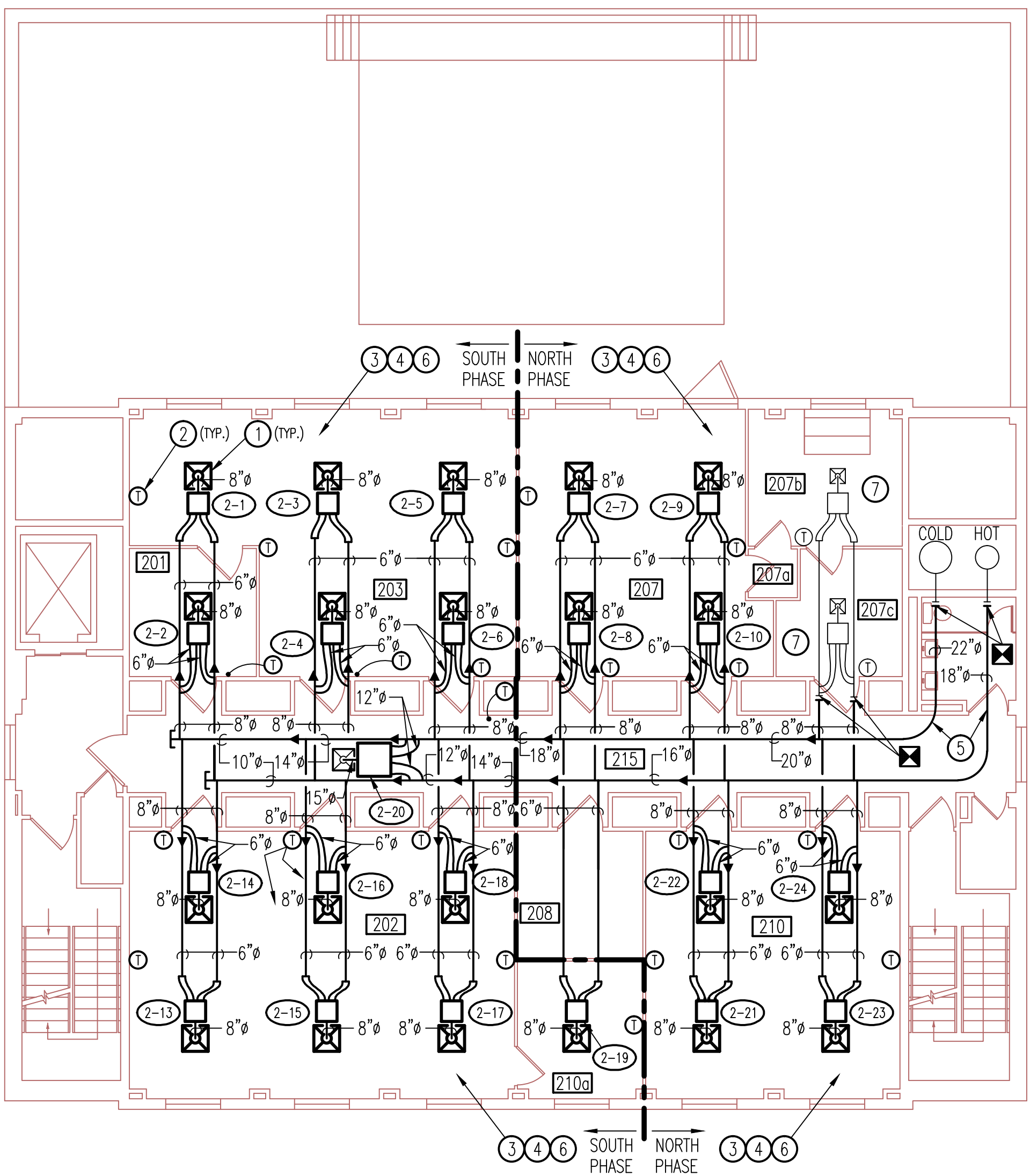
- 1 PROVIDE NEW DUAL DUCT TERMINAL UNIT, DIFFUSERS AND ASSOCIATED DUCTWORK. CAP UNUSED BRANCH TAKE-OFFS. SEE TERMINAL UNIT SCHEDULES FOR TYPE AND SIZING. PROVIDE RECTANGULAR-TO-ROUND DUCT ADAPTER FROM NEW TERMINAL UNIT TO NEW SUPPLY DIFFUSER INLET. SEE EXCEPTION, NEW WORK NOTE NO. 7.
- 2 PROVIDE NEW THERMOSTAT AND ASSOCIATED CONTROLS FOR NEW TERMINAL UNIT(S). NEW BOX CONTROLS SHALL TIE INTO THE NEW JOHNSON CONTROLS BUILDING ENERGY MANAGEMENT SYSTEM. A PROJECT TO FURNISH AIR HANDLING UNIT CONTROLS IS TO BE COMPLETED UNDER A SEPARATE CONTRACT. CONTROLS CONTRACTOR TO COORDINATE THIS WORK WITH THAT PROJECT. SEE EXCEPTION, NEW WORK NOTE NO. 7.
- 3 PROVIDE AND APPLY NEW FIRE PROOFING MATERIAL TO ABOVE CEILING STRUCTURAL BEAMS WHERE IT WAS PREVIOUSLY REMOVED BY THE ABATEMENT CONTRACTOR. PROTECT ALL ABOVE CEILING MECHANICAL, ELECTRICAL, PLUMBING SERVICES AND EQUIPMENT FROM OVERSPRAY.
- 4 PROVIDE NEW CEILING GRID AND PADS AT SAME ELEVATION AS EXISTING. THE CONTRACTOR SHALL NOTE THE EXISTING GRID PATTERN AND ELEVATION PRIOR TO DEMOLITION AND SHALL INSTALL NEW GRID AND PADS TO MATCH EXISTING. THIS CONTRACTOR SHALL REINSTALL ALL LIGHTS, SPEAKERS, FIRE ALARM DEVICES AND OTHER ACCESSORIES THAT WERE REMOVED DURING THE ABATEMENT. THE NEW PADS SHALL MATCH EXISTING AND BE 2 X 2 X 15/16" SQUARE LAY-IN TYPE WITH MEDIUM TEXTURE, WET FORMED MINERAL FIBER WITH FACTORY APPLIED WHITE LATEX PAINT FINISH. THEY SHALL HAVE AN ACOUSTICS NRC RATING OF 0.55, CAC OF 33, CLASS A FIRE RATING, 0.82 LIGHT REFLECTANCE AND SHALL CONFORM WITH ASTM E84 AND ASTM E1264. THE EXISTING PADS ARE ARMSTRONG, CORTECA MINABOARD NO. 770 NON-DIRECTIONAL WITH A WHITE 2 X 2 X 5/8" GRID OR APPROVED EQUAL.
- 5 PROVIDE NEW DUCT AFTER ABATEMENT. SIZES AS SHOWN. DUCT MAINS SHALL BE 6" PRESSURE CLASS. PROVIDE NEW BRANCH TAKEOFFS AND CONNECT TO MAINS.
- 6 DUCT AND PIPE INSULATION WILL HAVE BEEN REMOVED DUE TO ASBESTOS ABATEMENT WORK ON THIS FLOOR. THIS CONTRACTOR SHALL PROVIDE NEW DUCT AND PIPE INSULATION IN ALL AREAS OF ABATEMENT. DUCTWORK TO BE INSULATED IS SHOWN. HOT WATER PIPING TO BE INSULATED INCLUDES APPROXIMATELY 550 FT. OF 3/4".
- 7 AREA UNAFFECTED BY THIS WORK, ALL EQUIPMENT, DUCT, ETC. TO REMAIN AS IS.

GENERAL NOTES:

1. THE BUILDING WILL BE OCCUPIED THROUGHOUT THE CONSTRUCTION. THE CONTRACTOR WILL DIVIDE THE SECOND FLOOR INTO TWO PHASES AS SHOWN. THE CONTRACTOR SHALL DEVELOP A COMPLETE SCHEDULE OF CONSTRUCTION FOR OWNER APPROVAL BY PRE-CONSTRUCTION MEETING. VA WILL BE GIVEN (2) WEEKS NOTICE PRIOR TO ANY AIR HANDLING UNIT SHUTDOWN. THE SECOND FLOOR REQUIRES ASBESTOS ABATEMENT. THE MECHANICAL CONTRACTOR SHALL ACT AS THE LEAD CONTRACTOR AND SHALL COORDINATE ALL ASBESTOS CONTRACTOR ACTIVITY WITH THEIR OWN. WORK SHALL BE COMPLETED IN ONE PHASE BEFORE ANY WORK WILL BE ALLOWED IN THE OTHER.
2. CONTRACTOR SHALL REMOVE LIGHT FIXTURES, ELECTRICAL CONDUIT, FIRE SPRINKLER HEADS OR ANY OTHER SURROUNDING INTERFERENCES FOR THE REMOVAL OF THE TERMINAL UNITS.
3. HANDLE EXISTING PNEUMATIC LINES WITH CAUTION AS THEY ARE OLD AND FRAGILE. ANY PNEUMATIC LINES DAMAGED DURING CONSTRUCTION SHALL BE REPLACED IN-KIND.
4. CONTRACTOR TO PROVIDE 120V CIRCUIT TO NEW TERMINAL UNIT CONTROL PANELS.

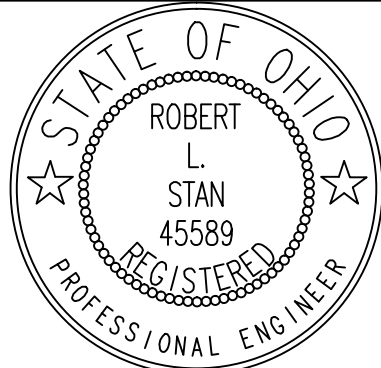



DEMOLITION - BUILDING 15
SECOND FLOOR PLAN
SCALE: 1/8" = 1'-0"



NEW WORK - BUILDING 15
SECOND FLOOR PLAN
SCALE: 1/8" = 1'-0"

BID DOCUMENTS

| | | | | | | | | | | | | | | | |
|------------|--|--------------|--|---|--|--|---|---------------|------------------------------------|---------|-----------------|-------|---|---|--|
| | | CONSULTANTS: | |  | ENGINEER: | | Drawing Title | | Project Title | | Project Number | | Office of Construction and Facilities Management | | |
| | | | | | <div>STAN</div> <div>Engineers</div> <div>SAI JOB #1574</div> <div>7887 Washington Village Drive Dayton, Ohio 45459</div> <div>phone: 937 438-0177 fax: 937 438-0183</div> <div>copyright 2009 All rights reserved</div> | | Partial Second Floor Plan - Demolition/New Work | | FCA-Replace Mixing Boxes, Bldg. 15 | | 539-09-109 | | | | |
| | | | | | | | Approved: Project Director | | Location | | Building Number | | | | |
| BID SET | | 7-20-12 | | | | | | | Cincinnati, Ohio | | Bldg. 15 | | | | |
| Revisions: | | Date | | | | | | Date | | Checked | | Drawn | | Drawing Number | |
| | | | | | | | | JULY 20, 2012 | | FJB | | MJK | | H2 | |
| | | | | | | | | | | | | | | Dwg. 4 of 6 | |
| | | | | | | | | | | | | | |  Department of Veterans Affairs | |



GENERAL NOTES:

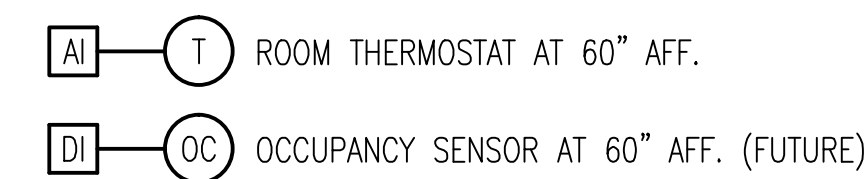
1. THE AIR HANDLING UNIT DESIGN COOLING DISCHARGE TEMPERATURE IS 52° F DB AND 51° F WB. THE DESIGN HEATING IS 110° F.
2. INDOOR DESIGN CRITERIA FOR LAB AREAS ARE 70° F AND 50% RH FOR COOLING AND 75° F AND 30% RH HEATING PER THE VA HVAC DESIGN MANUAL FOR HOSPITALS, FEBRUARY, 2008. ANIMAL CONTAINMENT AREAS ARE 65° F AND 55% RH COOLING AND 85° F AND 50% RH FOR HEATING.

AIR TERMINAL UNIT DIMENSIONAL DATA

NOTES:

1. FOR PURPOSES OF INSURING THAT AN AVAILABLE TERMINAL UNIT WILL FIT IN THE EXISTING SPACE, THE DIMENSIONAL DATA FOR ONE AVAILABLE MANUFACTURER IS LISTED HERE BASED ON THE FOLLOWING MODEL: TITUS DECC (DIGITAL DUAL DUCT CONSTANT VOLUME) WITH INTEGRAL MIXER/ATTENUATOR, MIXING BAFFLE, "STERI-LOC" INSULATION LINER AND INCLUDES AEROCROSS MULTI-POINT SENSORS AT HOT/COLD DUCT INLETS.
2. FOR PURPOSES OF INSURING THAT AN AVAILABLE TERMINAL UNIT WILL FIT IN THE EXISTING SPACE, THE DIMENSIONAL DATA FOR ONE AVAILABLE MANUFACTURER IS LISTED HERE BASED ON THE FOLLOWING MODEL: TITUS DECC (DIGITAL SINGLE DUCT CONSTANT VOLUME) WITH HOT WATER REHEAT COILS (2-ROW MULTI-CIRCUIT), INTEGRAL ATTENUATOR, "STERI-LOC" INSULATION LINER, AND AEROCROSS SENSOR AT DUCT INLET.

BID DOCUMENTSVA FORM 08-6231



N.T.S.

CONSTANT VOLUME MIXING BOXES - DUAL DUCT

- B. UNOCCUPIED MODE:

1. THE UNIT SHALL BE CONTROLLED IN A SIMILAR MANNER AS DESCRIBED IN THE OCCUPIED MODE USING THE UNOCCUPIED TEMPERATURE SETPOINT, 60° F (ADJ.). THE UNIT'S TOTAL AIRFLOW VOLUME SETPOINT IN UNOCCUPIED MODE SHALL BE HALF OF IT'S SCHEDULED OCCUPIED AIRFLOW VALUE.

VA FORM 08-6231