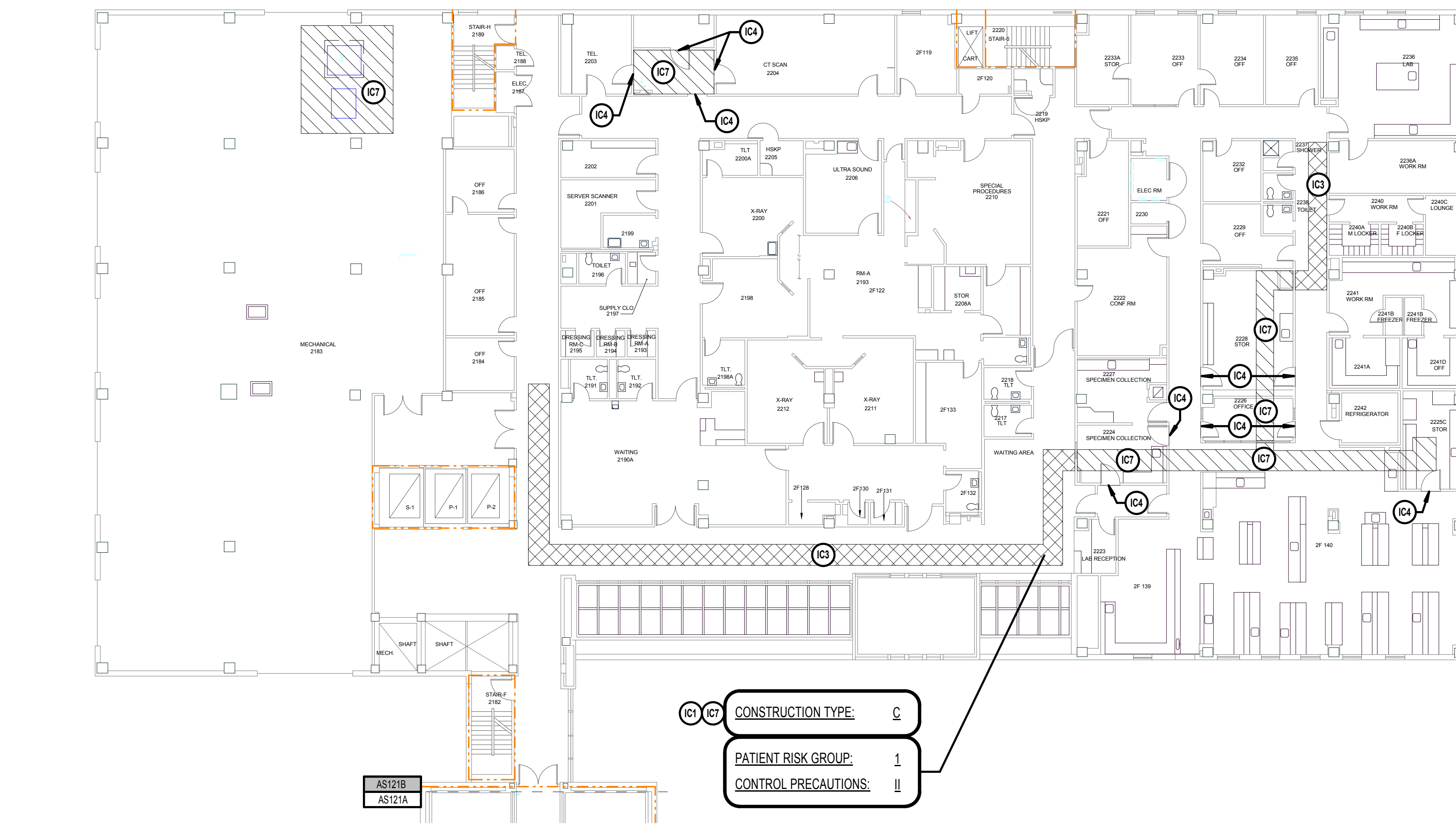
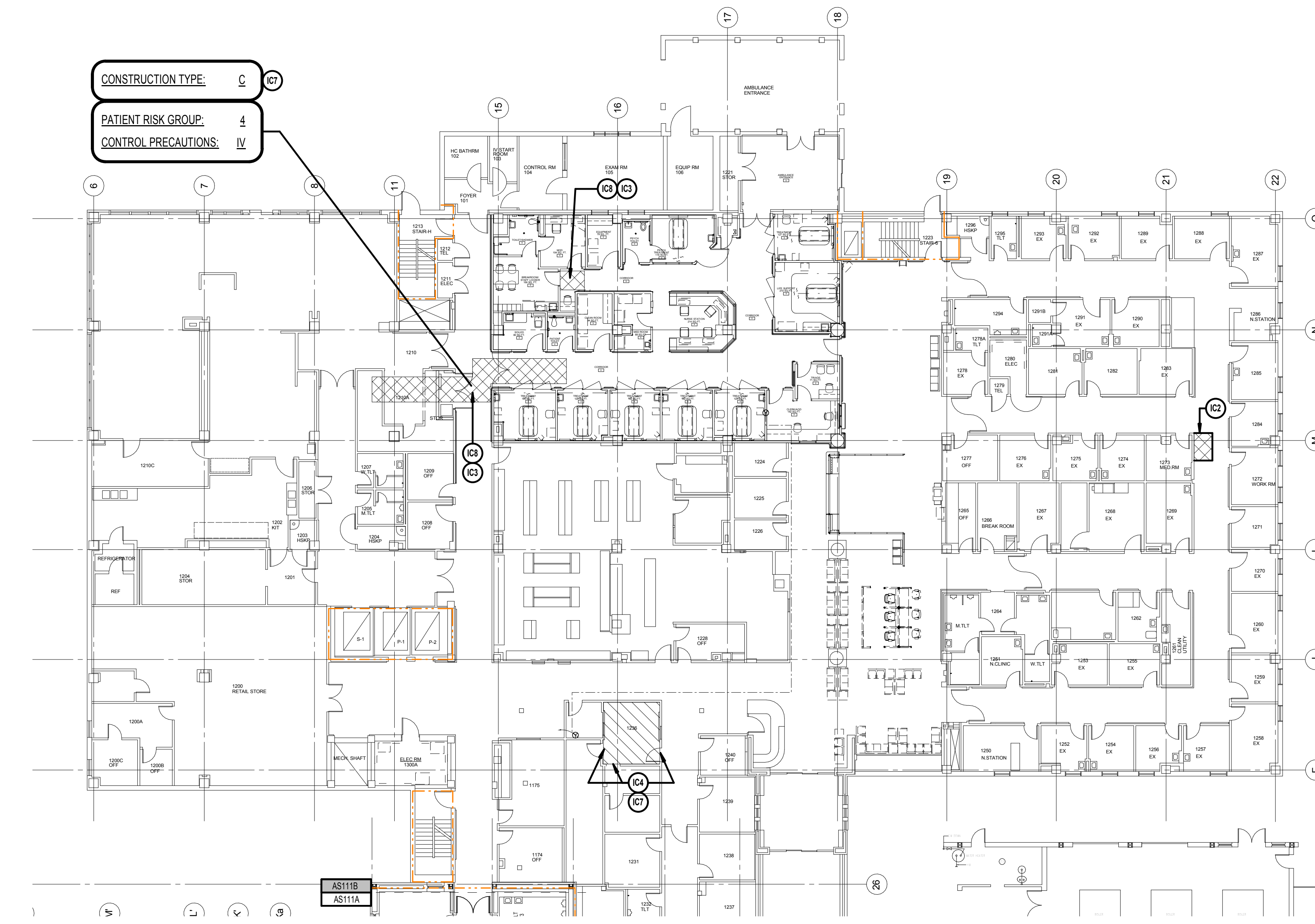


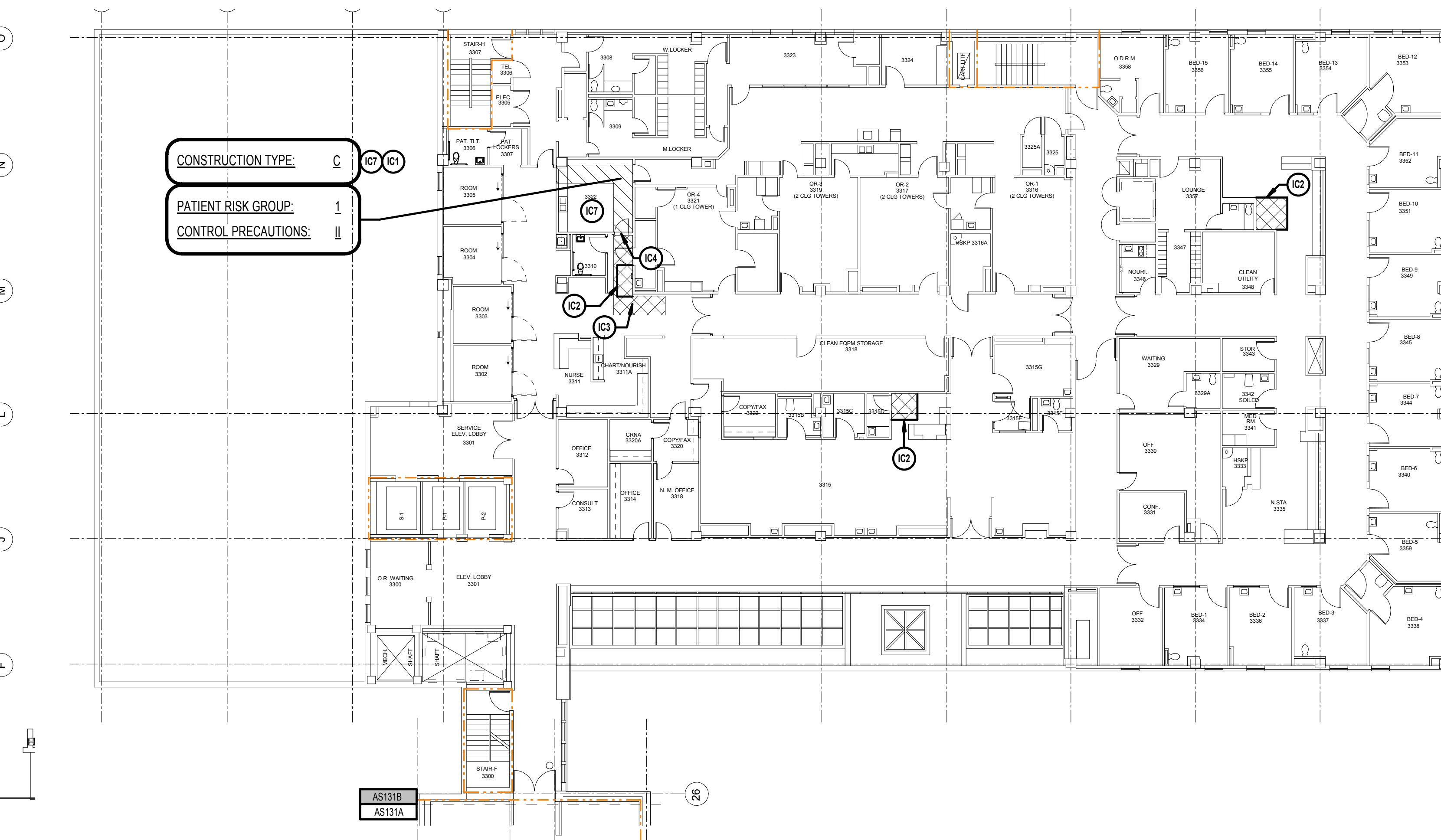
61 BASEMENT ICR PLAN - CLINICAL ADDITION
1/16" = 1'-0"



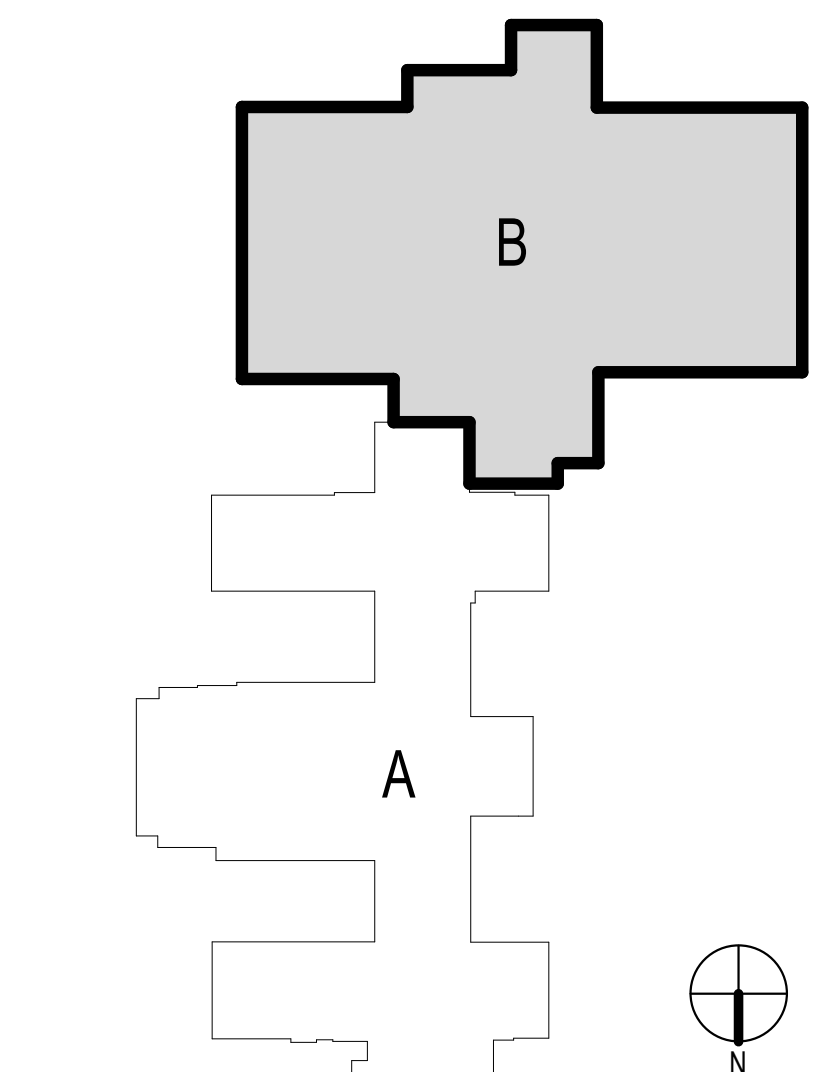
62 SECOND FLOOR ICR PLAN - CLINICAL ADDITION
1/16" = 1'-0"



63 FIRST FLOOR ICR PLAN - CLINICAL ADDITION
1/16" = 1'-0"



64 THIRD FLOOR ICR PLAN - CLINICAL ADDITION
1/16" = 1'-0"



KEY PLAN - CLINICAL ADDITION
1" = 100'-0"

ICRA PLAN GENERAL NOTES

- Contractor shall attend the "Notice to Proceed" meeting ready to submit the following: Schedule of Values based on the AIA G702/G703 working form; Cost loaded project schedule; OSHA 30 Certification for Supervisors; Safety and Infection Control Program.
- Contractor is to follow HVAC Section 01-00-00 for Infection Prevention Measures.
- Contractor is to coordinate with the VA for Off-Hours access to the floors above and below the work area needed for electrical and plumbing tie-ins. Temporary ICRA barriers are to be installed around all work areas prior to construction.
- Items delineated under the ICRA notes are not all inclusive of work to be performed. Contractor is responsible for performing all work shown in the contract documents in the work area designated.
- Contractor is to inform and coordinate with the VA and architectural/engineer of any conflicts that may arise in construction phase.
- Follow all fire safety codes as defined in specification section 01-00-00.
- Contractor is to protect all finishes including but not limited to flooring, ceiling, wall surfaces, doors and door frames during the movement of materials off and on of work. Coordinate with color and specification section 01-00-00 for procedures/requirements.
- Refer to the door schedule for ICRA barrier HMI framed door hardware set types.
- Paint all hard wall ICRA barriers white and maintain clean appearance.
- The contractor must provide a two week notice of any work to be performed off hours or any deliveries, install closures and barrier schedules. Contractor must be flexible on daily scheduling due to surgeries, medical procedures, etc. and may be required to stop work to accommodate these issues. Some tasks may have to take place during off hours or weekends.
- Personal Requirements
 - Cutting shall be free of loose soil and debris upon exiting the construction zone.
 - Long pants and sleeves will be worn in construction areas.
 - Personal entering sterile/invasive procedure areas will be provided with a disposable urine suit, head covering, and shoe covering, which must be removed prior to leaving the area.
 - Tools and equipment must be damp-wiped prior to entry and exit from the sterile and invasive procedure areas.
 - Tools and equipment related with blood and body fluids will be cleaned with an approved germicide (E.G. Cavicide).
 - Provide Construction Overlay Drawings for each discipline showing locations and fit below desk and above ceiling height.

ICRA TRAFFIC CONTROL GENERAL NOTES

- Designated entry and exit procedures will be defined in conjunction with any necessary interim life safety measures for each construction project where applicable.
- All access pathways will be free of debris.
- Unauthorized personnel will not be permitted to enter the construction zone. All personnel must be issued and ID badge from the VA prior to entering the site.
- Only designated elevators will be used for construction activities during schedule times.
- Where construction doors are required, contractor shall provide construction doors with push button-closer locks with core drills to install existing VA facility system. Contractor will use combination system to enter construction zones and VA will provide core and use the lock to enter the space. All construction area entrances will be fitted with lockable fire rated doors and will remain locked from entry into the construction zone. Stand down to stairwells must be maintained. Lock cores must be compatible with the VA core system.
- Interim life safety measures shall be maintained during construction. Coordinate with the COR and Fire Protection Specialists.

ICRA CONSTRUCTION GENERAL NOTES

- Isolate HVAC system in the area where work is being performed to prevent contamination of the duct. See specification section 01-00-00 for air quality requirements.
- Fire sprinkler protection must remain active at all times. Sprinkler head protection cages must be used during construction.
- Complete all critical barriers to seal area from non-work area before construction begins. Barrier walls must meet or exceed UL-465.
- Maintain negative air pressure within work utilizing "HEPA" equipped air filtration units. Rated at 95% capture rate of 0.3 microns.
- Seal all existing holes, pipes, conduits, and penetrations with the rated caulking or materials, per code requirements.
- Cleaning
 - The construction zone and adjacent areas shall be maintained in a clean and sanitary manner by the contractor and will be swept and mop regularly and more frequently as needed to minimize dust generation. All vacuum cleaners and shop vacuums must be "HEPA" filtered units.
 - Environmental Management Services will be responsible for the routine cleaning of adjacent areas including stairwells. Cleaning of hallways for materials delivery will be supported by Environmental Management Services. The contractor will be responsible for coordinating this cleanup immediately upon identification of a need.
- Construct an anteroom and require all personnel to pass through this room so they can be vacuumed using a "HEPA" vacuum cleaner before leaving the workable or they can wear cloth paper coveralls that are removed each time they leave the work site.
- Install contact matwalk off mats within the anteroom just outside the construction zone. The mat must be large enough to cover the entire threshold of the exit.
- Certain construction waste before transport conditions and services in highly covered containers. Clean and sanitize exposed container caps prior to leaving anteroom or construction zone.
 - Shower collectors must be sealed during construction activities, and operational during off hours. Pull station must be active at all times.
 - When used shower chairs, the col. covering must be closed when not in use. The opening shall have full protection safety caps and be as efficient as necessary. The chair and barrier shall be replaced with the mat water as necessary. The contractor shall be fully covered at all times, except for maintenance and manual lift.
 - Control collected and disposed must be provided for any spill or leakage encountered when dispensing materials. All issues while working on a specific line, such as stopped lines or other damage that extend outside the construction work zone are the responsibility of the contractor to return to a fully functional system.

ICRA COMPLETION OF PROJECT GENERAL NOTES

- Do not remove the barriers from work area until completed project is inspected by the COTR and authorized.
- Remove barrier materials carefully to minimize spreading of dirt and debris associated with construction. Utilize zip walks to remove hard barriers.
- Vacuum work area with disinfectant.
- Wet mop with disinfectant.
- Remove isolation of HVAC system in areas where work is being performed.
- Water supply lines will be flushed before placing newly reconnected or constructed areas into service. COTR, infection control, safety office and plumbing shop will be notified prior to the scheduled date for the flushing procedure.

- #### GENERAL NOTES
- SEE SHEET 0102 FOR NOTES PERTAINING TO DEMOLITION, CONTRACTORS RESPONSIBILITIES, AND ARCHITECTURAL GENERAL NOTES.
 - SEE SHEET 0102 FOR PARTITION TYPES AND DETAILS.
 - SEE SHEET 0102 FOR INFECTION CONTROL REQUIREMENTS.
 - SEE SHEET 0103 FOR LAI VA CLARKSBURG SPECIFIC ICRA PLAN GENERAL NOTES, ICRA CONSTRUCTION NOTES AND ICRA COMPLETION OF PROJECT NOTES.
 - BEFORE COMMENCING ANY WORK CONTRACTOR SHALL COORDINATE WITH COTR AND INFECTION CONTROL, OFFICE AND OSHA APPROVAL, OF SAFETY AND INFECTION CONTROL PROGRAM.

CONSULTANTS:
H.F. LENZ COMPANY
Engineers
Planners
Surveyors
Energy Consultants
1407 Scarp Avenue
Johnstown, PA 15904
Phone: 814-269-9300 FAX: 814-269-9301
cadd@hflen.com www.hflen.com

ARCHITECT:
ARRAY
healthcare facilities solutions
2520 Renaissance Boulevard, Suite 110
King of Prussia, PA 19406
T: 610.270.0599
F: 610.270.0995
www.arrayhfi.com

Project Number
3439.02
Scale
As indicated
Drawing Title
ICRA PLANS - CLINICAL ADDITION
Approved: Project Director

Project Title
LAJ VA CLARKSBURG MEDICAL
UPGRADE
Location
1 Med Center Drive, Clarksburg, WV
Date
07/20/2012

VA Project Number
VA244-P-1491
Building Number
02
Drawing Number
G1103
Dwg. of

Office of
Facilities
Management
Department of
Veterans Affairs