

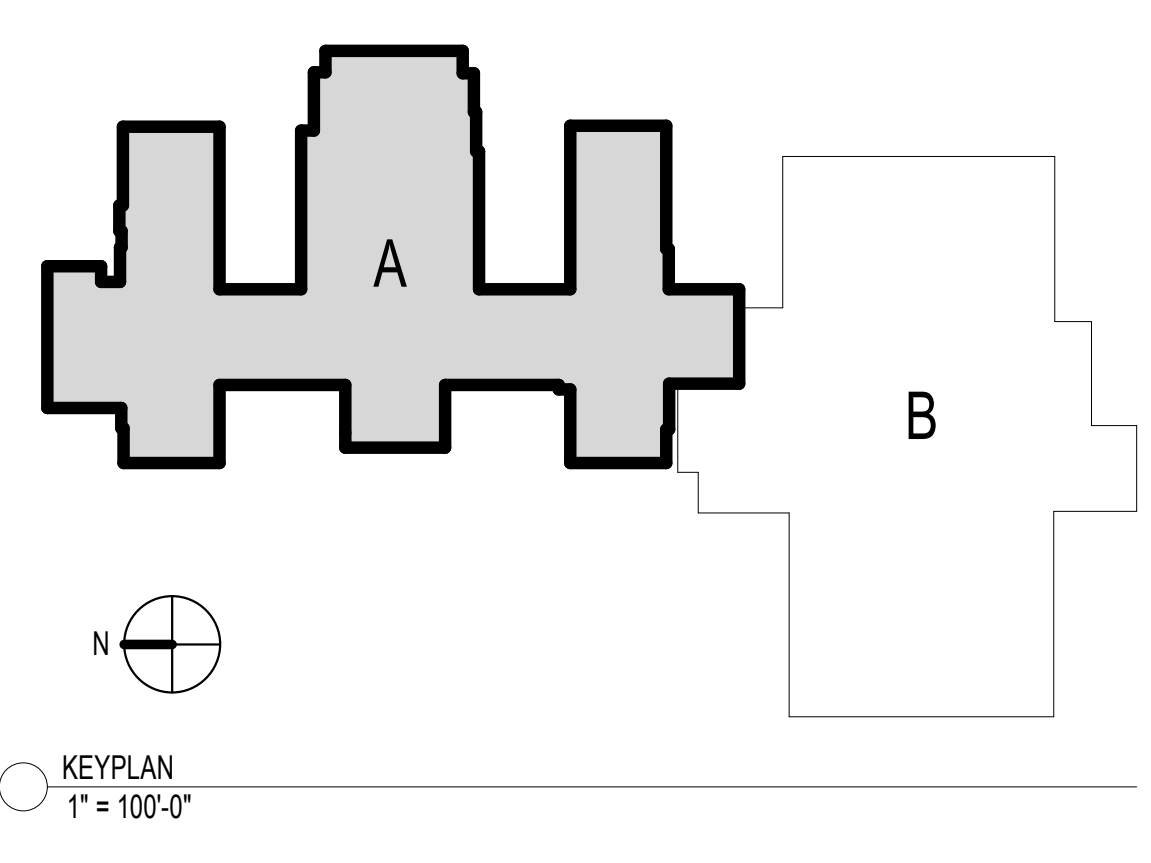
PARTITION PLAN INDICATIONS	
	EXISTING PARTITION TO BE REMOVED
	EXISTING PARTITION TO REMAIN
	EXISTING ONE HOUR FIRE RATED PARTITION (SEE PARTITION TYPES FOR CONTRACTOR RESPONSIBILITIES)
	EXISTING ONE HOUR SMOKE BARRIER (SEE PARTITION TYPES FOR CONTRACTOR RESPONSIBILITIES)
	EXISTING TWO HOUR FIRE RATED PARTITION (SEE PARTITION TYPES FOR CONTRACTOR RESPONSIBILITIES)
	EXISTING TWO HOUR SMOKE BARRIER (SEE PARTITION TYPES FOR CONTRACTOR RESPONSIBILITIES)
	TYPICAL FURNISH (SEE PARTITION TYPE)
	TYPICAL NON RATED PARTITION (SEE PARTITION TYPES)

- ### GENERAL CUTTING AND PATCHING NOTES
- WHERE EXISTING EXTERIOR WALL OR INTERIOR PARTITIONS ARE DAMAGED IN AREAS OF SELECTIVE DEMOLITION OR THE REMOVAL OF EXISTING CONSTRUCTION OR ANY OTHER DEMOLITION ACTION, THE CONTRACTOR SHALL BE RESPONSIBLE TO REPAIR EXISTING WALL SURFACES TO MATCH EXISTING OR TO PRODUCE A SMOOTH SURFACE TO RECEIVE NEW FINISHES.
 - AFTER DEMOLITION OF EXISTING M.P.E. WORK, EQUIPMENT AND CASEWORK, PATCH AND REPAIR EXISTING WALLS TO MATCH EXISTING CONSTRUCTION AND PREPARE WALL FOR NEW FINISHES.
 - ALL CONSTRUCTION TO REMAIN WHICH IS AFFECTED BY DEMOLITION SHALL BE PATCHED, PLASTERED AND BE PROPERLY REPAIRED AND ALLOWED SO AS TO LEAVE NO EVIDENCE OF PATCHING OR REPAIR. ALL ADJACENT FLOORS AND CEILINGS SO AFFECTED BY DEMOLITION SHALL BE PATCHED SO AS TO LEAVE NO EVIDENCE OF PATCHING OR REPAIR.
 - DEMOLITION BY THE REMOVAL OF EXISTING CONSTRUCTION OR ANY OTHER DEMOLITION ACTION, THE CONTRACTOR SHALL BE RESPONSIBLE TO REPAIR EXISTING WALL SURFACES TO MATCH EXISTING OR TO PRODUCE A SMOOTH SURFACE TO RECEIVE NEW FINISHES.
 - EXTENT OF NEW FINISHES WHEN PATCHING WALLS TO MATCH EXISTING:
A. CORRIDOR WALLS: PAINT ENTIRE WALL FROM FLOOR TO CEILING AND FROM INSIDE CORNER TO INSIDE CORNER. FROM OUTSIDE CORNER TO OUTSIDE CORNER OR FROM OUTSIDE CORNER TO INSIDE CORNER.
- INSIDE OF ROOMS: PAINT ENTIRE WALL FROM FLOOR TO CEILING AND FROM INSIDE CORNER TO INSIDE CORNER.
 - BASE: WHERE REQUIRED REMOVE AND RE-INSTALL BASE FROM SEAM TO SEAM OR A MINIMUM OF 4'-0".

- ### GENERAL NOTES
- SEE SHEET G002 FOR NOTES PERTAINING TO DEMOLITION, CONTRACTORS RESPONSIBILITIES, AND ARCHITECTURAL GENERAL NOTES.
 - SEE SHEET G002 FOR PARTITION TYPES AND DETAILS.
 - SEE SHEET G002 FOR INFECTION CONTROL REQUIREMENTS.
 - SEE SHEETS G101 THRU G103 FOR CORA PLANS.
 - SEE SHEET A5131B FOR MED GAS BOX ELEVATIONS.

- ### ARCHITECTURAL KEYNOTES
- EXISTING WALL HUNG ONLY TO BE REMOVED. SEE PLUMBING DRAWINGS. PATCH AND REPAIR AREA AS REQUIRED TO RECEIVE NEW FINISHES TO MATCH EXISTING.
 - SAW CUT PORTION OF EXISTING ASPHALT PAVING AND REPLACE WITH 7" THK. CONCRETE PAVING. PROVIDE OPENING WITH SLAB TO ACCEPT EXISTING GREASE TRAP LID. SEE DETAILS IN DRAWING A5131B AND SPECIFICATIONS FOR ADDITIONAL INFORMATION.
 - PROVIDE PAVING MARKINGS. COORDINATE WITH COTR FOR DIRECTION. SEE SPECIFICATIONS FOR ADDITIONAL INFORMATION.
 - AREA ABOVE CEILING FOR WHICH SELECTIVE DEMOLITION IS REQUIRED. SEE SPECIFICATIONS SECTION 01739 / 02410 FOR ADDITIONAL INFORMATION.
 - ALL CONSTRUCTION TO REMAIN WHICH IS AFFECTED BY DEMOLITION SHALL BE PATCHED, PLASTERED TO MATCH EXISTING AND ALLOWED SO AS TO LEAVE NO EVIDENCE OF PATCHING OR REPAIR.
 - REMOVE EXISTING MED GAS ALARM PANELS. COORDINATE WITH MECHANICAL DRAWINGS.
 - REMOVE PORTION OF EXISTING WALL AS REQUIRED TO ACCOMMODATE NEW WORK. SEE MECHANICAL, ELECTRICAL, AND PLUMBING DRAWINGS.
 - EXISTING MED GAS VALVE PANEL TO BE REMOVED. COORDINATE LOCATIONS WITH PLUMBING DRAWINGS. PATCH AND REPAIR EXISTING WALL TO RECEIVE NEW FINISHES.
 - REMOVE EXISTING MEDICAL GAS OUTLETS AND CAP EXISTING MED GAS LINES. REFER TO MECH DRAWINGS.
 - REMOVE EXISTING OXYGEN MANIFOLD AND ASSOCIATED PIPING. PATCH AND REPAIR WALL AS REQUIRED TO RECEIVE NEW FINISHES.
 - PROVIDE METAL ENCLOSURE TO 8" O.D. AROUND NEW MEDICAL GAS PIPING.
 - REMOVE EXISTING ACoustical CEILING SYSTEM IN IT'S ENTIRETY. SALVAGE EXISTING LIGHTING FIXTURES AND CEILING MOUNTED EQUIPMENT. UPON COMPLETION OF MEDICAL GAS WORK, INSTALL NEW ACT AT 7'-10" AFF. EXTEND DUCTWORK AND SPRINKLER LINES AS REQUIRED.
 - PROVIDE 4" THICK HOUSEKEEPING PAD, 300-PSI CONCRETE TO BE INSTALLED PER AIA STANDARDS. PAD SHALL BE 6" LARGER IN BOTH DIRECTIONS. COORDINATE SIZE WITH PURCHASED EQUIPMENT.
 - REMOVE PORTION OF EXISTING WALL AS REQUIRED TO INSTALL NEW WQVR. SEE DETAIL IN DRAWING A5131B, AND PLUMBING DRAWINGS.
 - SAW CUT PORTION OF EXISTING WALL AS REQUIRED TO INSTALL NEW MEDICAL GAS PIPING. PROVIDE FIRE SEALANT AT WALL PENETRATION. RATING TO MATCH ADJACENT WALL.
 - NEW ELECTRICAL PANEL. SEE ELECTRICAL DRAWINGS.
 - REMOVE EXISTING EMERGENCY OXYGEN CONNECTION. SEE PLUMBING DRAWINGS. PATCH AND REPAIR EXTERIOR WALL AS REQUIRED TO MATCH EXISTING.
 - SAW CUT EXISTING EXTERIOR WALL AS REQUIRED TO INSTALL NEW EMERGENCY OXYGEN CONNECTION. SEE PLUMBING DRAWINGS.
 - CONTRACTOR IS RESPONSIBLE TO PATCH AND REPAIR PENETRATIONS RESULTING FROM THE REMOVAL AND/OR DEMOLITION OF ABOVE CEILING MEDICAL GAS PIPING IN A MANNER TO MATCH EXISTING ADJACENT CONDITIONS AND TO ENSURE CONTINUITY OF FIRE RATING REQUIREMENTS WHERE APPLICABLE.
 - CONTRACTOR IS RESPONSIBLE TO SEAL PENETRATIONS RESULTING FROM THE INSTALLATION OF NEW ABOVE CEILING MEDICAL PIPING IN A MANNER TO MATCH EXISTING ADJACENT CONDITIONS AND TO ENSURE CONTINUITY OF FIRE RATING REQUIREMENTS WHERE APPLICABLE.
 - SERVICE ELEVATOR TO BE USED FOR TRASH REMOVAL AND MATERIAL TRANSPORTATION. CONTRACTOR TO COORDINATE WITH COTR AND SPECIFICATIONS FOR PROCEDURES AND REQUIREMENTS.
 - WORK TO BE PERFORMED AFTER HOURS. COORDINATE WITH COTR AND AIA USER.
 - EXISTING MED GAS OUTLET TO BE REMOVED AND REPLACED WITH NEW MED GAS OUTLET. SEE PLUMBING DRAWINGS.
 - REMOVE EXISTING MED GAS VALVE PANEL AND PREPARE OPENING AS REQUIRED TO RECEIVE NEW MED GAS VALVE PANEL. SEE PLUMBING DRAWINGS.
 - REMOVE PORTION OF EXISTING WALL AS REQUIRED TO INSTALL NEW MED GAS PRESSURE GAUGE BOX. SEE DETAIL IN DRAWING A5131B AND PLUMBING DRAWINGS.
 - PROVIDE WALL ENCLOSURE TO CONCEAL NEW VACUUM EXHAUST PIPING.
 - PROVIDE 4" WIDE 16 GA. STAINLESS STEEL ENCLOSURE AROUND EXISTING PIPE ALLOW FOR 1/2" GAP BETWEEN BOTTOM OF ENCLOSURE AND GROUND. FASTEN TO EXISTING EXTERIOR WALL WITH STAINLESS STEEL BOLTS.
 - EXISTING ASPHALT PAVING TO REMAIN.
 - EXISTING RAMP TO REMAIN.
 - EXISTING CONCRETE SIDEWALK TO REMAIN.
 - EXISTING GREASE TRAP LID TO BE REMOVED AND REINSTALLED. MODIFY RIM OF GREASE TRAP AS REQUIRED TO BE INSTALLED IN NEW CONCRETE PAVING.
 - EXTEND EXISTING CONCRETE PAD AS REQUIRED TO ACCOMMODATE NEW EQUIPMENT. CONCRETE TO BE 3000-PSI AND SHALL BE INSTALLED PER AIA STANDARDS. COORDINATE SIZE WITH PURCHASED UNIT.
 - EXISTING GYPSUM WALLBOARD SOFFIT TO REMAIN.
 - EXTEND GYPSUM WALLBOARD SOFFIT AS REQUIRED TO CONCEAL NEW PIPING. COORDINATE WITH PLUMBING DRAWINGS. BOTTOM OF SOFFIT TO ALIGN WITH EXISTING. FINISH TO MATCH EXISTING.

NOTE:
ALL DEMOLITION AND PATCHING WORK TO BE PERFORMED IN ACCORDANCE WITH SPECIFICATIONS SECTION 01739, CUTTING AND PATCHING AND SECTION 02410, DEMOLITION.



(F) BASEMENT ARCHITECTURAL & DEMOLITION PLAN
1/8" = 1'-0"

CONSULTANTS:
H.F. LENZ COMPANY
Engineers
Planners
Surveyors
Energy Consultants
1407 Scarp Avenue
Johnstown, PA 15904
Phone: 814-289-9300 FAX: 814-289-9301
cadd@hflen.com www.hflen.com

ARCHITECT:
ARRAY
healthcare facilities solutions

Project Number
3439.02
Scale
As indicated
2520 Renaissance Boulevard, Suite 110
King of Prussia, PA 19406
T: 610.270.0599
F: 610.270.0995
www.arrayhfs.com

Drawing Title
BASEMENT ARCHITECTURAL & DEMOLITION PLAN
Approved: Project Director

Project Title
LAJ VA CLARKSBURG - MEDICAL GAS UPGRADE
Location
1 Med Center Drive, Clarksburg, WV
Date
07/20/2012
Checked
EBC
Drawn
EN

VA Project Number
VA244-P-1491
Building Number
01
Drawing Number
AS101A
Dwg. 6 of 44
Office of Facilities Management
Department of Veterans Affairs