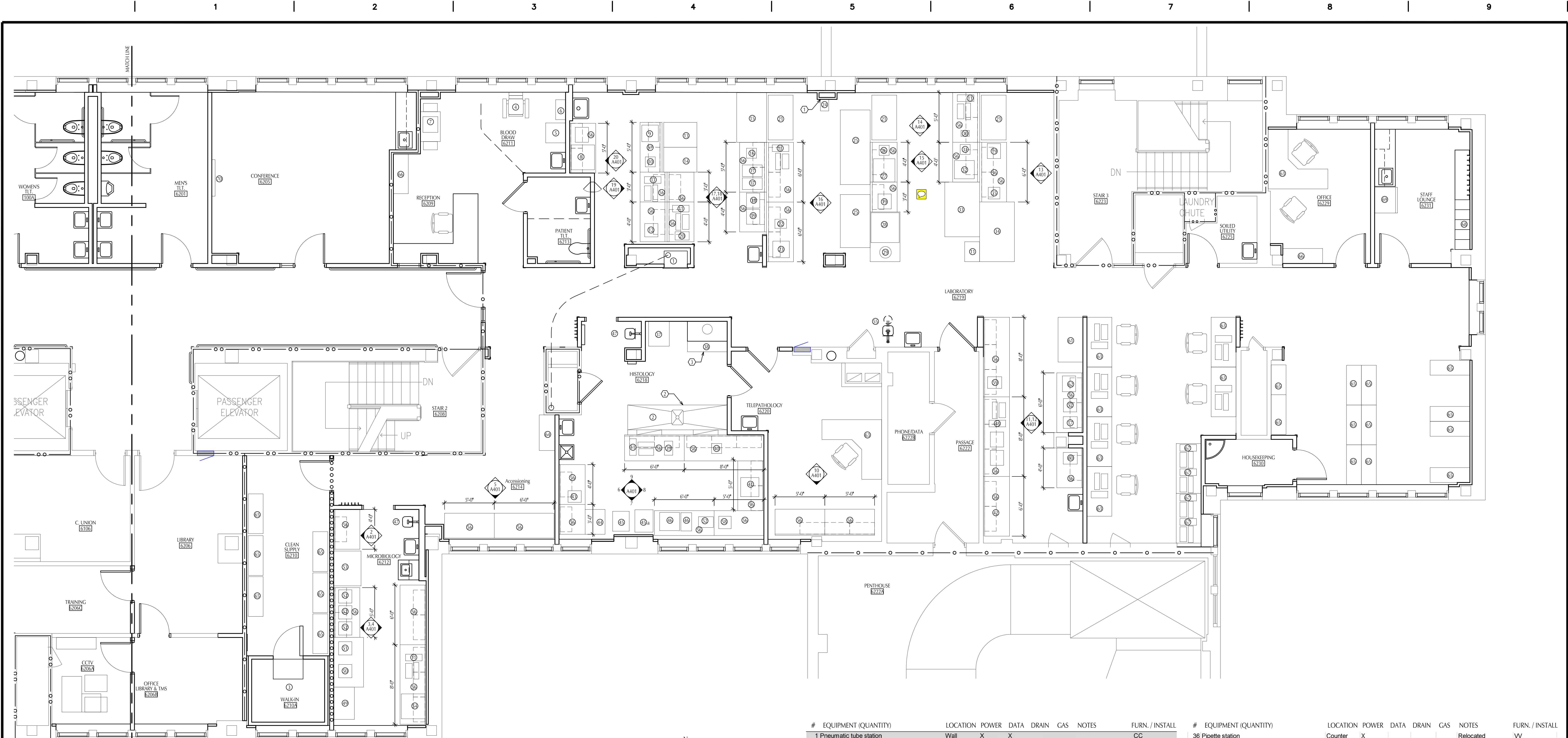


one eighth inch = one foot
one quarter inch = one foot
three eighths inch = one foot
one half inch = one foot
three quarters inch = one foot
one inch = one foot
two inches = one foot
three inches = one foot



Sixth Floor Plan -- East
SCALE: 1/4" = 1'-0"

Keynotes

1. Provide backing in wall to support water purification system. Coordinate mounting height and size with owner supplied equipment requirements.
2. See section 11 53 61 for grossing workstation requirements.
3. See section 11 53 13 for fume hood requirements.

Schedule Key

1. VV - VA furnished, VA installed.
2. VC - VA furnished, contractor installed.
3. CC - Contractor furnished, contractor installed.

#	EQUIPMENT (QUANTITY)	LOCATION	POWER	DATA	DRAIN	GAS	NOTES	FURN. / INSTALL
1	Pneumatic tube station	Wall	X	X				CC
2	Backdraft grossing table	Floor	X	X	X		Water & Exhaust	CC
3	Walk in cooler	Floor	X				Monitor	CC
4	Phlebotomy chair	Floor						VV
5	Phlebotomy cart	Floor						VV
6	Phlebotomy rack	Wall						VC
7	Printer / copier / fax	Floor	X	X				VV
8	Urinalysis analyzer w/ printer	Counter	X	X			Relocated	VV
9	Urinalysis centrifuge	Counter	X				Relocated	VV
10	Urinalysis microscope	Counter	X				Relocated	VV
11	PC (7)	Counter	X	X			Relocated	VV
12	Osmometer	Counter	X				Relocated	VV
13	Freezer	Floor	X				Relocated, Monitor	VV
14	Refrigerator	Floor	X				Relocated, Monitor	VV
15	Tosoh AIC analyzer & table	Floor	X	X	X		Relocated	VV
16	Counter model centrifuge	Counter	X					VV
17	Centrifuge (2)	Counter	X				Relocated	VV
18	Quest printer	Counter	X	X			Relocated	VV
19	Printer (3)	Counter	X	X			Relocated	VV
20	Label printer	Counter	X	X			Relocated	VV
21	Two door refrigerator (3)	Floor	X				Relocated, Monitor	VV
22	Air centrifuge	Counter	X			X	Relocated, Lab Air	VV
23	Chemistry centrifuge	Counter	X				Relocated	VV
24	Water purification system	Wall	X		X		Water	VV
25	Chemistry analyzers (2)	Floor	X	X	X (2)		Relocated	VV
26	ESR analyzer	Counter	X				Relocated	VV
27	Straus analyzer	Counter	X	X			Relocated	VV
28	Coag analyzer & table	Floor	X	X	X		Relocated	VV
29	Coag centrifuge	Counter	X				Relocated	VV
30	Differential station	Counter	X	X			Relocated	VV
31	Microscope	Counter	X				Relocated	VV
32	Slide stainer	Counter	X		X		Relocated	VV
33	Hematology analyzer XE5000, printer & table	Floor	X	X	X		Relocated	VV
34	Hematology analyzer X1000, printer & table	Floor	X	X	X		Relocated	VV
35	Cyocentrifuge	Counter	X				Relocated	VV

#	EQUIPMENT (QUANTITY)	LOCATION	POWER	DATA	DRAIN	GAS	NOTES	FURN. / INSTALL
36	Pipette station	Counter	X				Relocated	VV
37	Xylene recycler on cart	Floor	X				Relocated	VV
38	Exhaust hood and cabinet base	Floor	X		X		Water	CC
39	Labeler	Counter	X	X			Relocated	VV
40	Microscope	Counter	X				Relocated	VV
41	Microtome	Counter	X				Relocated	VV
42	Blood bank analyzer	Floor	X	X			Relocated	VV
43	Stainer	Counter	X				Relocated	VV
44	Cover slipper	Counter	X				Relocated	VV
45	Processor	Floor	X				Relocated	VV
46	Cryostat	Floor	X				Relocated	VV
47	Tissue tek TEC (2)	Counter	X	X			Relocated	VV
48	Eye wash station (2)	Wall			X		Tempered water	CC
49	VBECs work station & printers (2)	Counter	X	X			Relocated	VV
50	Bacti-alert with printer	Counter	X	X			Relocated	VV
51	Cepheid with printer below on table	Floor	X	X			Relocated	VV
52	Microscan with printer below on table	Floor	X	X			Relocated	VV
53	Incubator (5)	Counter	X				Relocated	VV
54	Biological safety cabinet	Floor	X				Relocated, Exhaust	VC
55	OC-80	Floor	X	X			Relocated	VV
56	Emergency shower and eye wash station	Floor			X		Tempered water	CC
57	Lab bench (34)	Floor					2'-6" deep top	VC
58	Lab bench	Floor					2'-0" deep top	VC
59	Lighted tissue flotation bath	Counter	X	X			Relocated	VV
60	Cell washer	Counter	X		X		Relocated	VV
61	Backup cell washer	Counter	X		X		Relocated	VV
62	Blood bank and plasma freezer	Floor	X				Relocated, Monitor	VV
63	Plasma thawer	Counter	X				Relocated	VV
64	Desk with PC (8)	Floor	X	X			Relocated	VV
65	Flammable cabinet	Floor					Relocated	VV
66	Storage shelving (18)	Floor					Relocated	VV
67	Lateral file (2)	Floor					Relocated	VV
68	Lab interface computer (4)	Counter	X	X			Relocated	VV
69	Lockers	Floor	X				Relocated	CC
70	Refrigerator	Floor	X				Relocated	VV
71	42" monitor	Wall	X	X			CATV	VV

100% Construction Documents 95% Owner Review 50% Owner Review SD Review Programming Revisions	2-15-2012 1-26-2012 12-28-2011 12-12-2011 11/28/11 Date	CONSULTANTS: MEP ASSOCIATES, LLC CONSULTING ENGINEERS PROJECT MANAGERS COMMISSIONING AUTHORITIES 2720 Arbor Court, Suite A • Eau Claire, WI 54701 715.832.5680 • Fax 715.832.5668 www.mepassociates.com • info@mepassociates.com	ARCHITECT/ENGINEERS: NORTHERN DESIGN WORKS 420 RAIL STREET NEGAUNEE, MI 49866 PHONE: 906-475-6616 FAX: 906-475-6954 NDW PROJECT NUMBER: 1111	Drawing Title East Sixth Floor Equipment Plan Approved Project Director	Project Title Renovate 6th Floor Lab Location IRON MOUNTAIN, MICHIGAN Date 2-15-2012 Checked RU Drawn CG	Project Number 585-11-114 Building Number 1 Drawing Number Q101 Dwg. 17 of 82	Office of Construction and Facilities Management Department of Veterans Affairs
--	--	---	--	---	---	---	--