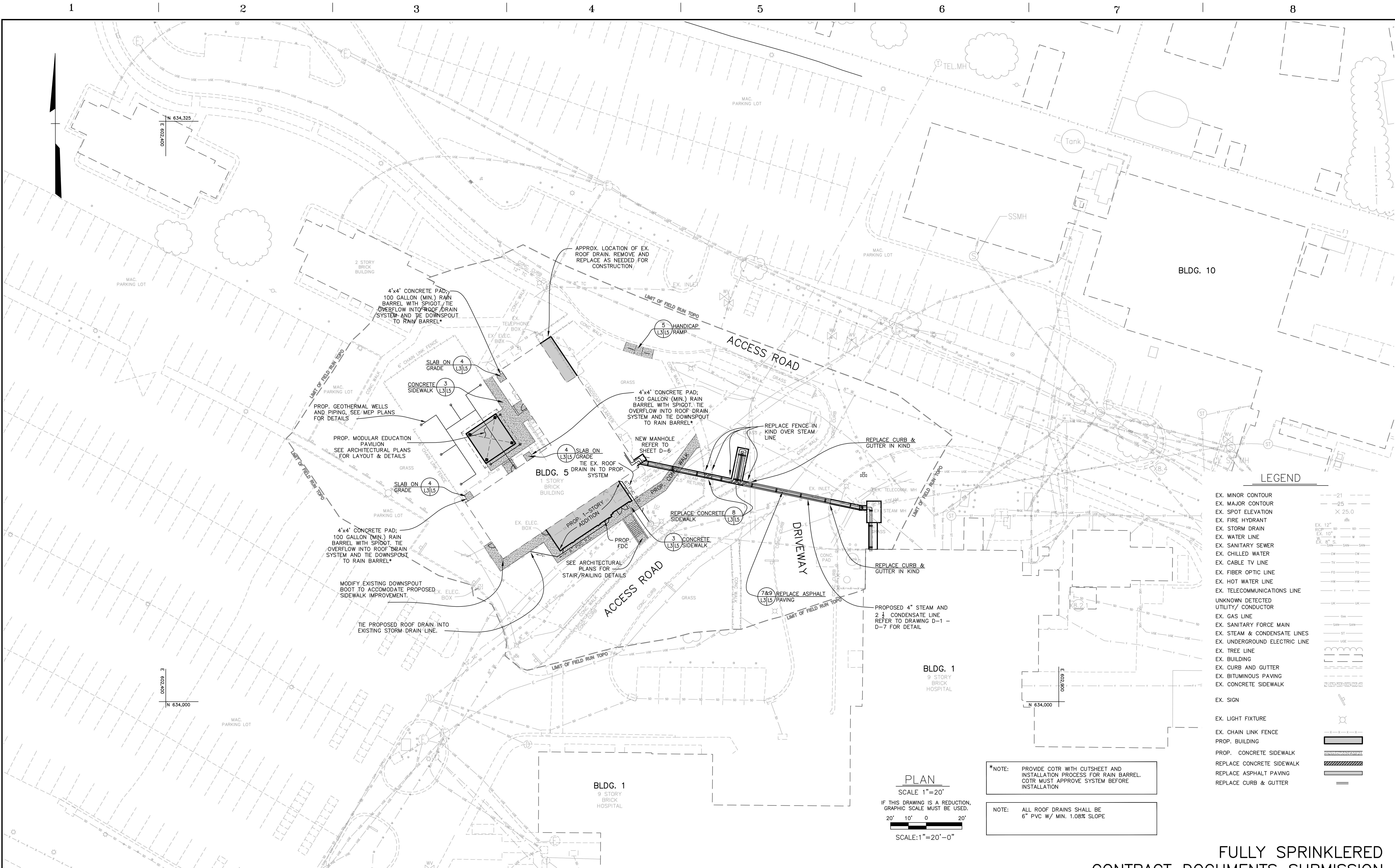


three inches = one foot
one and one half inch = one foot
one inch = one foot
three-quarters inch = one foot
one-half inch = one foot
one-quarter inch = one foot
three-eighths inch = one foot
one-eighth inch = one foot
one-sixteenth inch = one foot



Additions:	Date:	Consultants		BUILDING COST CONSULTANTS	Seal:	ARCHITECTURE	Drawing Scale:	Drawing Title:	Project Title:	Date:
		BURDETTE KOEHLER MURPHY & ASSOCIATES, INC.		12917 - 30TH AVENUE		POLT DESIGN GROUP	1" = 20'	SITE LAYOUT & UTILITY PLAN	BUILDING 5 RENOVATION	6-15-2012
		MECHANICAL / ELECTRICAL CONSULTING ENGINEERING		PLATTSMOUTH, NEBRASKA 68048						Project No:
		1423 CLARKVIEW ROAD, SUITE 500		402.298.8260 - FAX 402.298.8290				Approved: Associate Director for Operations:		460-13-111
		BALTIMORE, MARYLAND 21209								Building No:
		410.323.0600 - FAX 410.377.2543						Approved: Chief, Facilities Engineer:		5
		RICKERT ENGINEERING, INC.		CENTURY ENGINEERING, INC.					Checked:	Drawn:
		STRUCTURAL ENGINEER		CIVIL ENGINEER					AJD	RDT
		8813 WALTHAM WOODS RD. SUITE 310		10710 GLEBOY ROAD				Approved: Director, Medical Center:		DRAWING NO:
		BALTIMORE, MARYLAND 21234		HUNT VALLEY, MARYLAND 21031						L-3
		410.653.5110 - FAX 410.653.5114		443.589.2400 - FAX 443.589.2401					Location:	Dwg. 3 of 67
									VAMHCS MEDICAL CENTER	
									WILMINGTON, DELAWARE	

PDG 110105.01

DEPARTMENT OF VETERANS AFFAIRS