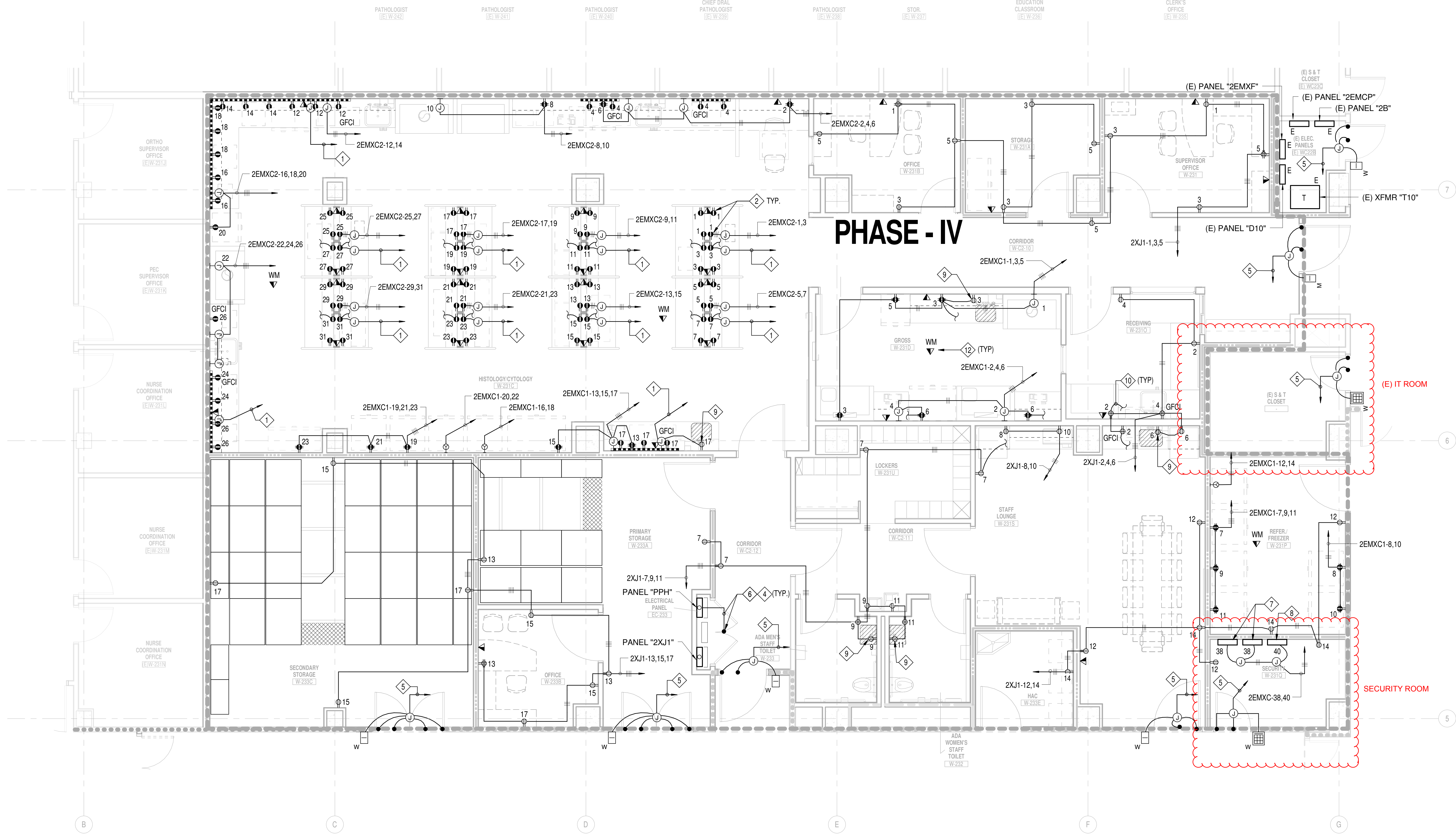


C:\Documents and Settings\alogue\My Documents\STTC_evil Projects_2012\01145CENTRAL-VA PATHOLOGY LAB_DEK\REV.vrt

6/20/2017 8:52:44 AM

VA FORM 08--6231



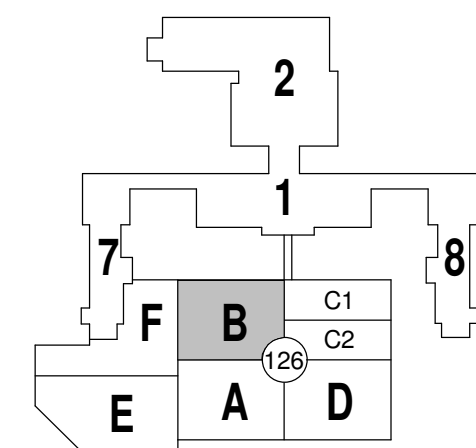
1 PATHOLOGY LAB RENOVATION POWER, VOICE/DATA & SIGNAL PLAN - QUAD B - PHASE 4
SCALE: 1/4" = 1'-0"

SHEET KEY NOTES

- 1"1C WITH CAT 6A CABLE TO EXISTING I/T ROOM.
- 2 EACH DUPLEX OUTLET AT FACE OF 6" COLUMN MAX WALL FRAME. SEE ARCHITECTURAL ELEVATION DRAWING 7D/AS-415.
- NOT USE.
- RUN CONDUIT UNDER EXISTING FLOOR SLAB (FIRST FLOOR CEILING). CONTRACTOR TO COORDINATE WITH VA LONG BEACH PROJECT MANAGER TO SCHEDULE WORK THAT SHALL BE DONE IN FIRST FLOOR AND SHALL BE INCLUDED ON HIS BID COST.
- PROVIDE CONDUIT AND CABLES, SIZE AND QUANTITY AS REQUIRED, TO SECURITY ROOM W-231.Q. FOR INSTALLATION, SEE DETAILS 1,2,3 ON SHEET ES-403.
- INTERCEPT EXISTING FEEDER AT FIRST FLOOR CEILING WITH PULL BOX (SIZE AS REQUIRED), PROVIDE NEW FEEDER TO MATCH EXISTING AND SPICE EXISTING WIRES WITH NEW AND EXTEND TO NEW PANEL IN ELECTRICAL CLOSET.
- PROVIDE SECURITY PANELS TO MATCH EXISTING, "HIRSCH ACCESS CONTROL PANEL". PROVIDE 20% SPACE CAPACITY.
- PROVIDE PANIC BUTTON HEAD-END SECURITY PANEL WITH 100 POINTS AND A 20 SECONDS RESPONSE MAXIMUM TIME DURATION. CONTRACTOR TO SUBMIT EQUIPMENT AND DEVICES TO VIA LONG BEACH PROJECT MANAGER FOR REVIEW AND APPROVAL. COORDINATE WITH VA REPRESENTATIVE PRIOR TO BID AND ROUGH-IN.
- POWER OUTLET FOR AUTOMATIC SINK OPERATOR. COORDINATE WITH SINK SUPPLIER/MANUFACTURER PRIOR TO ROUGH-IN.
- PROVIDE POWER CONNECTION TO UNDER-CABINET LIGHT FIXTURE, TYPICAL WHERE IT OCCURS.
- PROVIDE CEILING MOUNTED REFRIGERATOR WIRELESS TEMPERATURE MONITOR, AND CABLES HOMERUN TO EXISTING INFORMATION TECHNOLOGY ROOM. DEVICE AND CABLES TO MATCH EXISTING.

GENERAL SHEET NOTES

KEY PLAN



FINAL CONSTRUCTION DOCUMENT SUBMITTAL

ENGINEERS/ CONSULTANTS:

TTG STRUCTURAL
MECHANICAL
ELECTRICAL
CIVIL
TIMOTHY TAYLOR & GAINES
100 South Anaheim Boulevard, Suite 150
Anaheim, California 92805
Phone: 714.490.5555 Fax: 714.490.5560
www.ttacorp.com Project No. 0311.146.00



ARCHITECT:



gkkworks

155 South Fair Oaks
Pasadena, CA 91105
626.666.6906 626.666.3940 fax

Drawing Title
**PATHOLOGY LAB RENOVATION
POWER, VOICE/DATA & SIGNAL PLAN -
QUAD B - PHASE 4**

CHIEF CONST. MGMT./DESIGN SECTION

PROJECT ENGINEER

Drawn
HH

Checked
RT/NA

Project Title
**RENOVATION OF
PATHOLOGY LAB SECOND
FLOOR**

Building Number
126

Location
6901 E. SEVENTH STREET
LONG BEACH, CALIFORNIA 90822

**VETERANS AFFAIRS
MEDICAL CENTER**

Date
06/22/12

Project Number
600-12-147

Drawing Number
ES-202B

Dwg. of



GKK 40179