

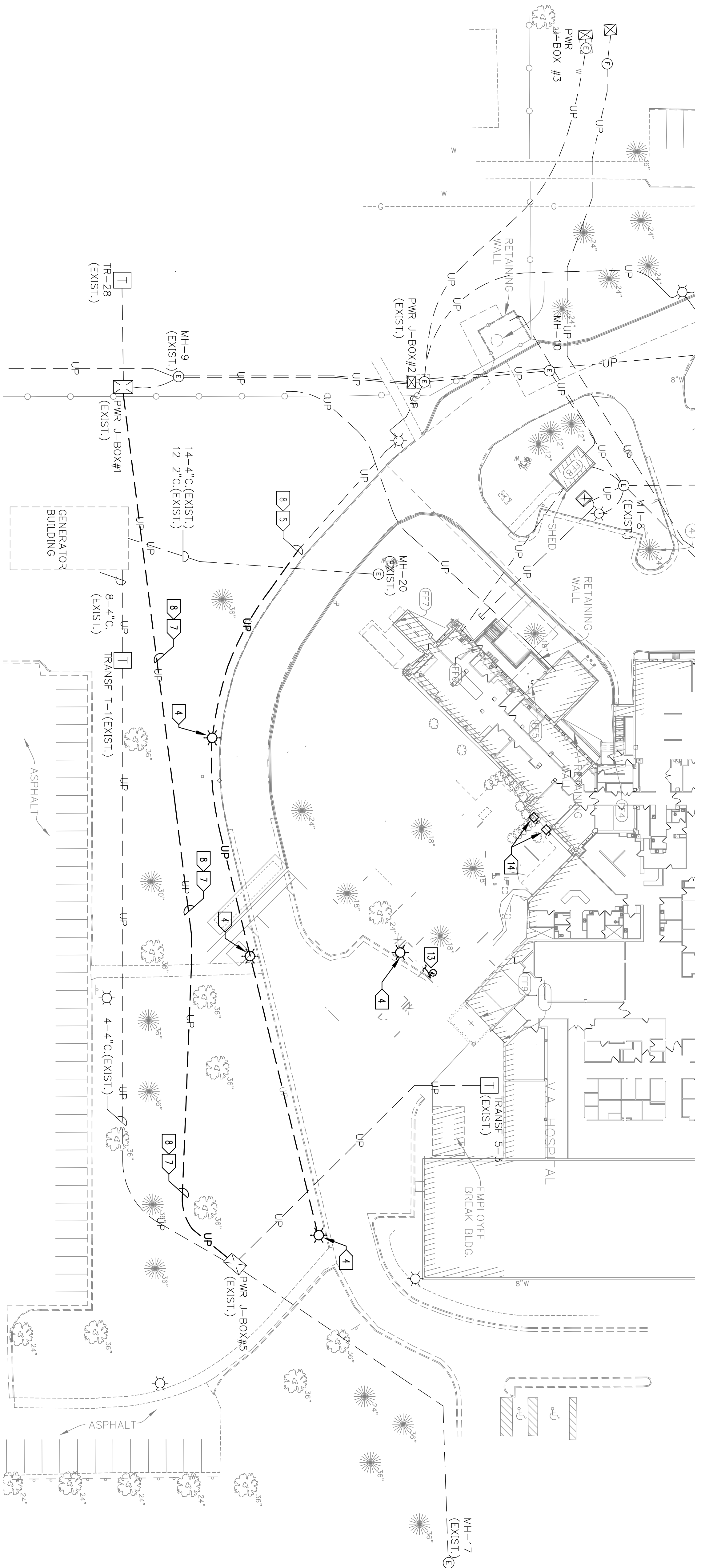
GENERAL NOTES:

- A. ALL ELECTRICAL EQUIPMENT INDICATED BY A LIGHT SHADED LINE IS EXISTING UNLESS NOTED OTHERWISE.

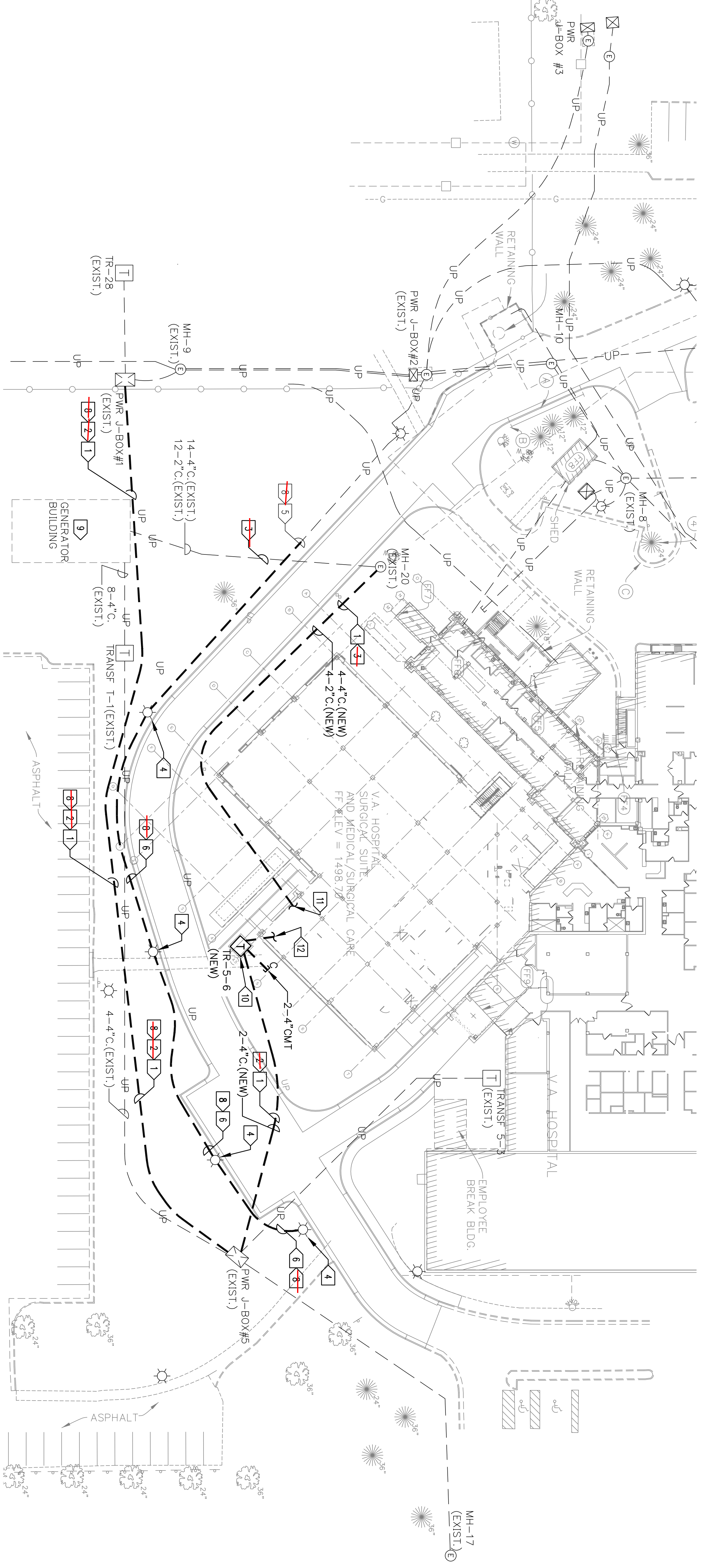
SPECIFIC NOTES:

- [1] CONCRETE ENCASE THE NEW DUCTBANK.  
[2] REFER TO MEDIUM VOLTAGE ONE-LINE DIAGRAM ON SHEET 5-E701/1 FOR NEW FEEDER SIZE(S).  
[3] REFER TO ONE-LINE DIAGRAM ON SHEET 5-E702 FOR FEEDER SIZE(S).  
[4] DISCONNECT EXISTING LIGHT FIXTURE, CLEAN RELAY, RELOCATE LIGHT FIXTURE(S) TO NEW LOCATION(S) AS INDICATED. REFER TO DETAIL 5-E501/3 FOR LIGHTING POLE FOUNDATION.  
[5] INTERCEPT EXISTING SITE LIGHTING CIRCUITING AND EXTEND TO NEW LOCATIONS OF FIXTURES.  
[6] PROVIDE NEW SITE LIGHTING CIRCUITING TO MATCH EXISTING.  
[7] DISCONNECT AND REMOVE EXISTING CABLES AND ABANDON EXISTING DUCTBANK.  
[8] THIS WORK TO BE EXCLUDED AS BID. ATTENDATE #4. REFER TO SPECIFICATION SECTION 01-00-00--GENERAL REQUIREMENTS FOR DESCRIPTION OF THIS BID ITEM.  
[9] EXISTING PARALLELING SWITCHGEAR ALSO LOCATED IN THIS BUILDING.  
[10] REFER TO DETAIL 3 ON SHEET 5-E501 FOR TRANSFORMER PAD DETAIL.  
[11] FOR CONTINUATION OF CIRCUITING REFER TO ONE-LINE DIAGRAM ON SHEET 5-E702 AND PARTIAL PLAN 5-E492/2. FEEDERS EXTEND TO PANELBOARDS 530-001, 530-002, 530-003 AND CONTROL WIRING FULLEX.  
[12] FOR CONTINUATION OF CIRCUITING REFER TO ONE-LINE DIAGRAM ON SHEET 5-E702.  
[13] EXISTING PULL-BOX WITH UNDERGROUND CONDUITS LOCATED BEHIND RETAINING WALL. FIELD VERIFY EXISTING SYSTEMS. DISCONNECT, REMOVE AND RELOCATE EXISTING SYSTEMS TO REMAIN. DISCONNECT AND REMOVE EXISTING SYSTEMS NO LONGER REQUIRED FOR NEW WORK.  
[14] DISCONNECT, REMOVE AND RELOCATE EXISTING DISCONNECT SWITCHES FOR POWER AND CONTROL CIRCUITS TO NEW LOCATION. REFER TO MECHANICAL PLANS.

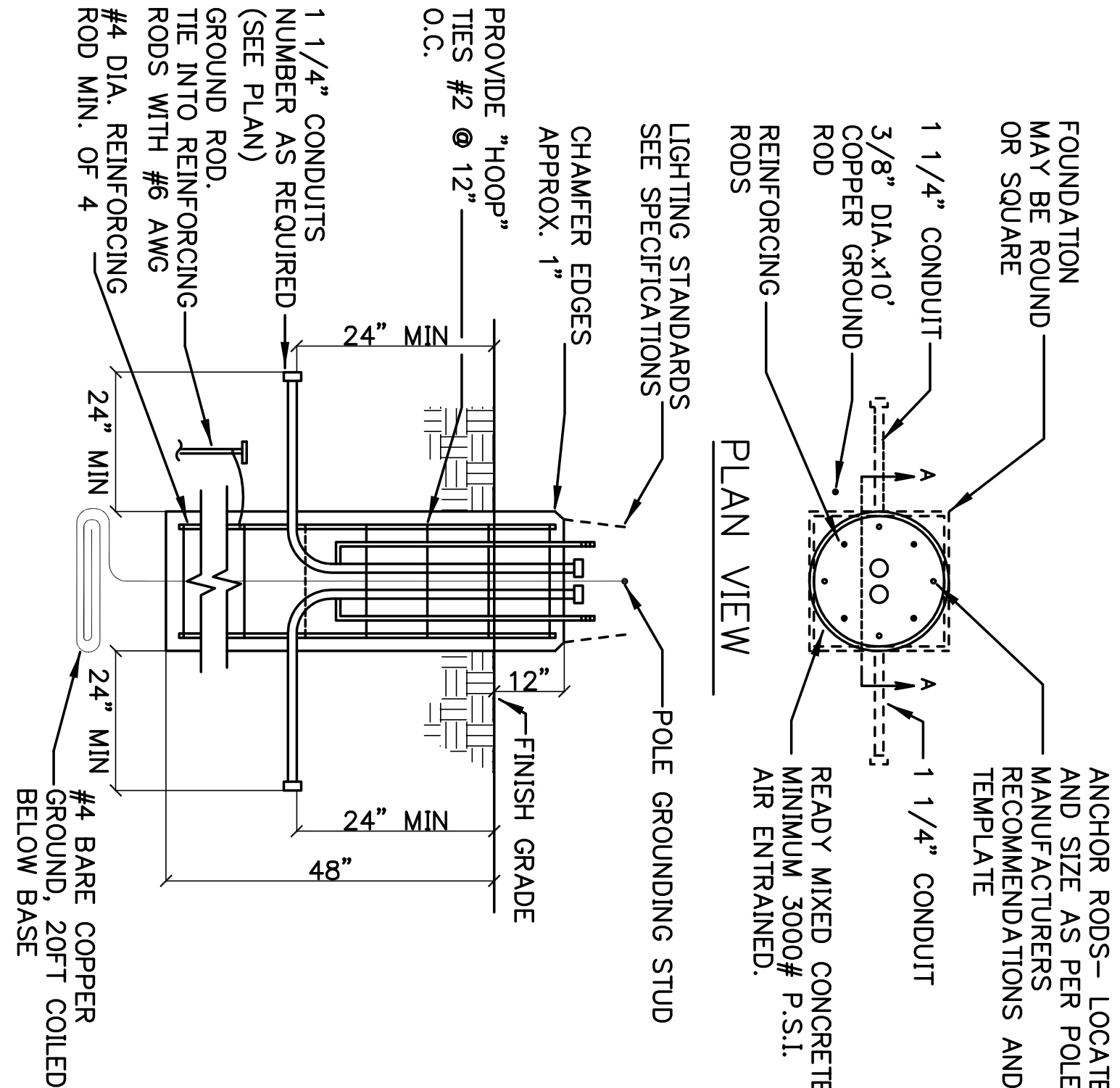
SPECIFIC NOTES: (CONT)



1 ELECTRICAL SITE PLAN - DEMOLITION WORK




2 ELECTRICAL SITE PLAN - NEW WORK



3 TYPICAL LIGHTING POLE FOUNDATION DETAIL

100%-FINAL-NOT FOR CONSTRUCTION  
FULLY SPRINKLERED

Revision Schedule		Revision Date	
Revision Number		Revision Date	
CONSULTANTS:			
CIVIL/LANDSCAPE/SURVEYOR		FIRE PROTECTION	
SAYRE ASSOCIATES		FR&C	
216 South DuSable Ave Sioux Falls, SD 57104		1520 Main Street Indianapolis, IN 46224	
t: 605-332-7211 f: 605-332-7222		t: 317-486-5188 f: 317-486-5189	
ARCHITECT/ENGINEERS/COST ESTIMATORS:			
ELLERBE BECKET		901 LaSalle Avenue, Suite 250 Minneapolis, MN 55402 612-376-2000 Ellerbe Becket Architects and Engineers 2009	
Drawing Title ELECTRICAL SITE PLAN		Project Title RECONSTRUCT ROAD	
Approved: Project Director		Location SIOUX FALLS, SD	
Date 10/28/12	Checked D.R.	Drawn L.F.	Dwg. 17 of 17
Project Number 128-13-102		Building Number	
Drawing Number			
 Construction & Facility Management Department of Veterans Affairs			