

1 CONDUIT STUB UP

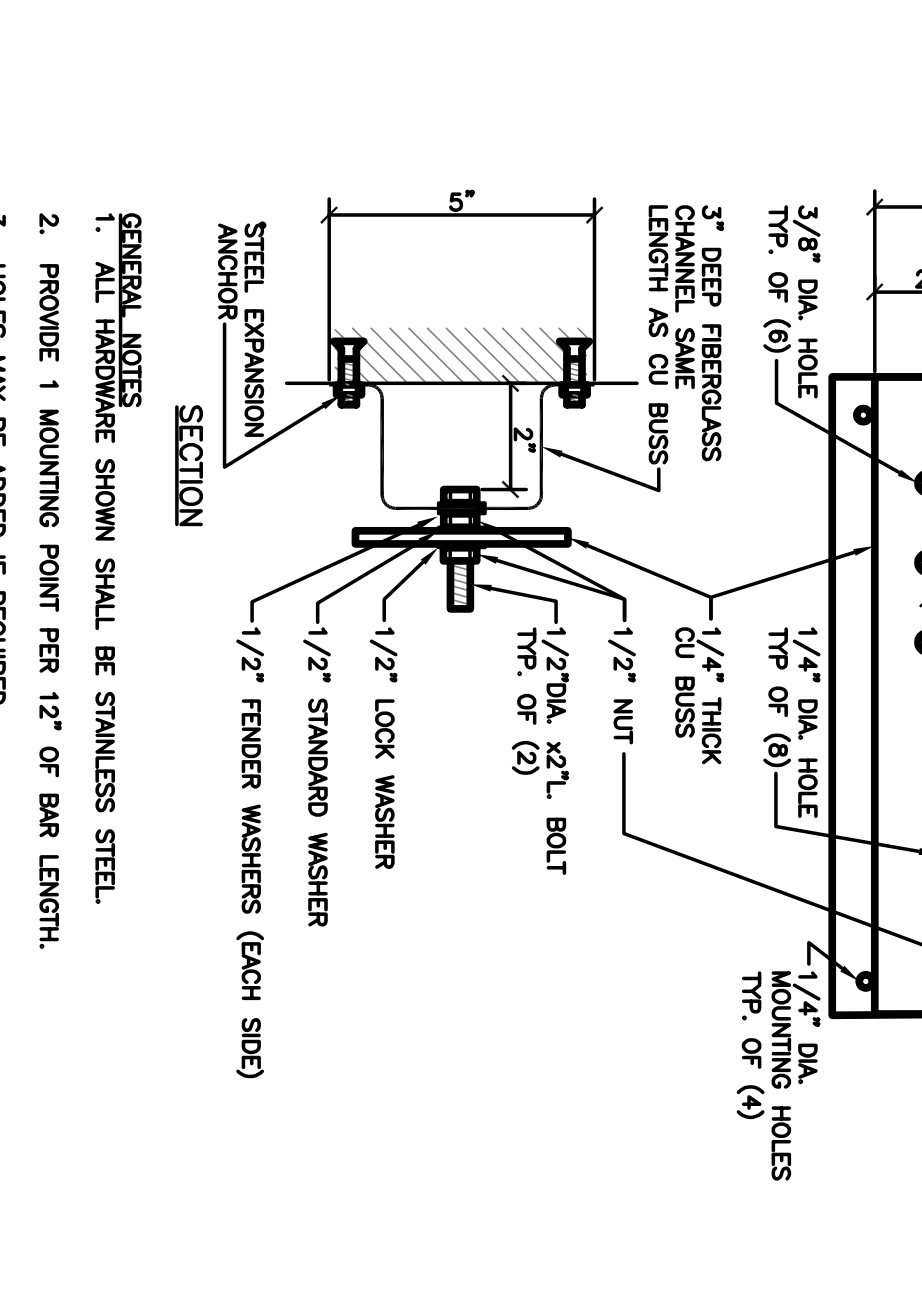
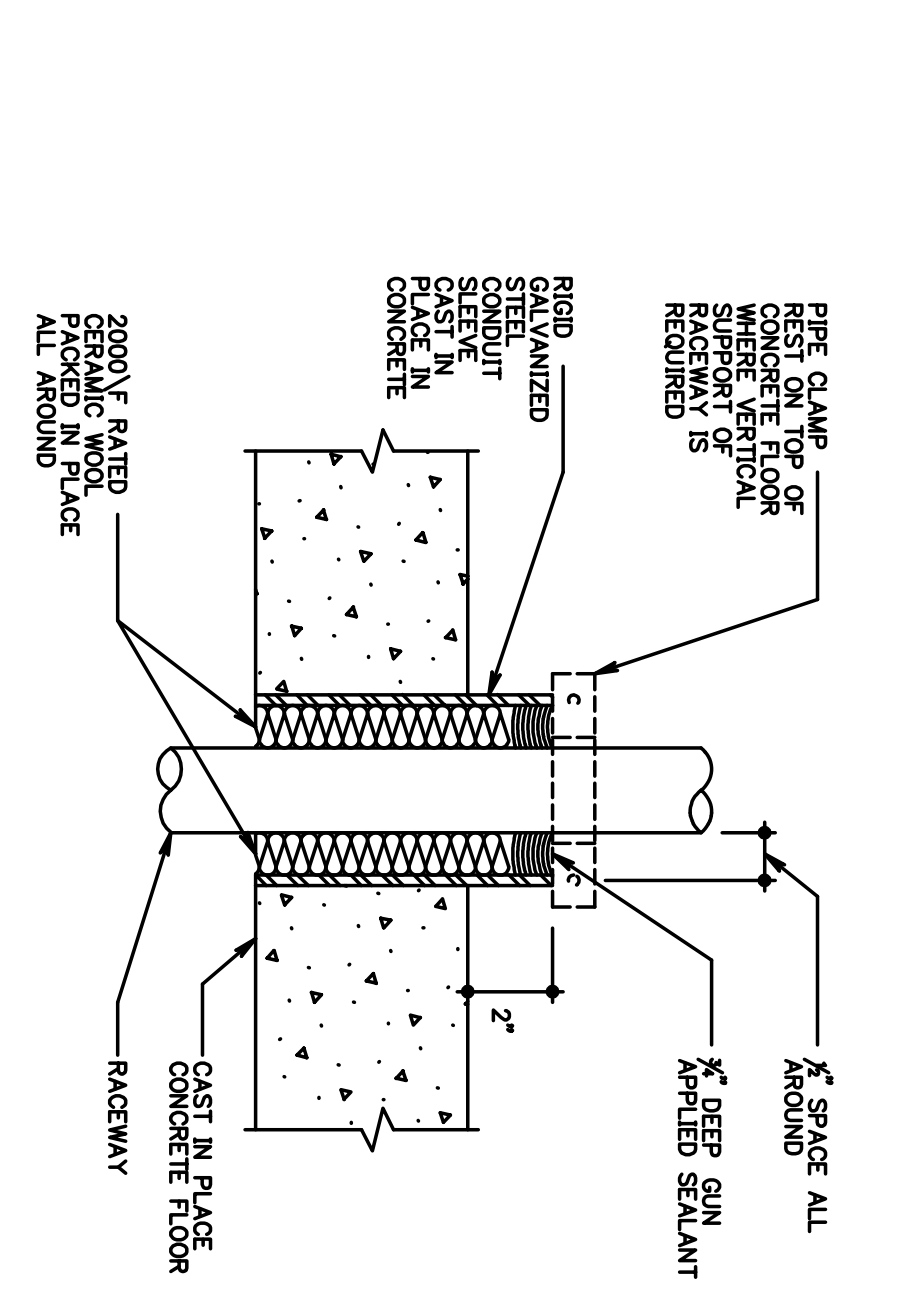
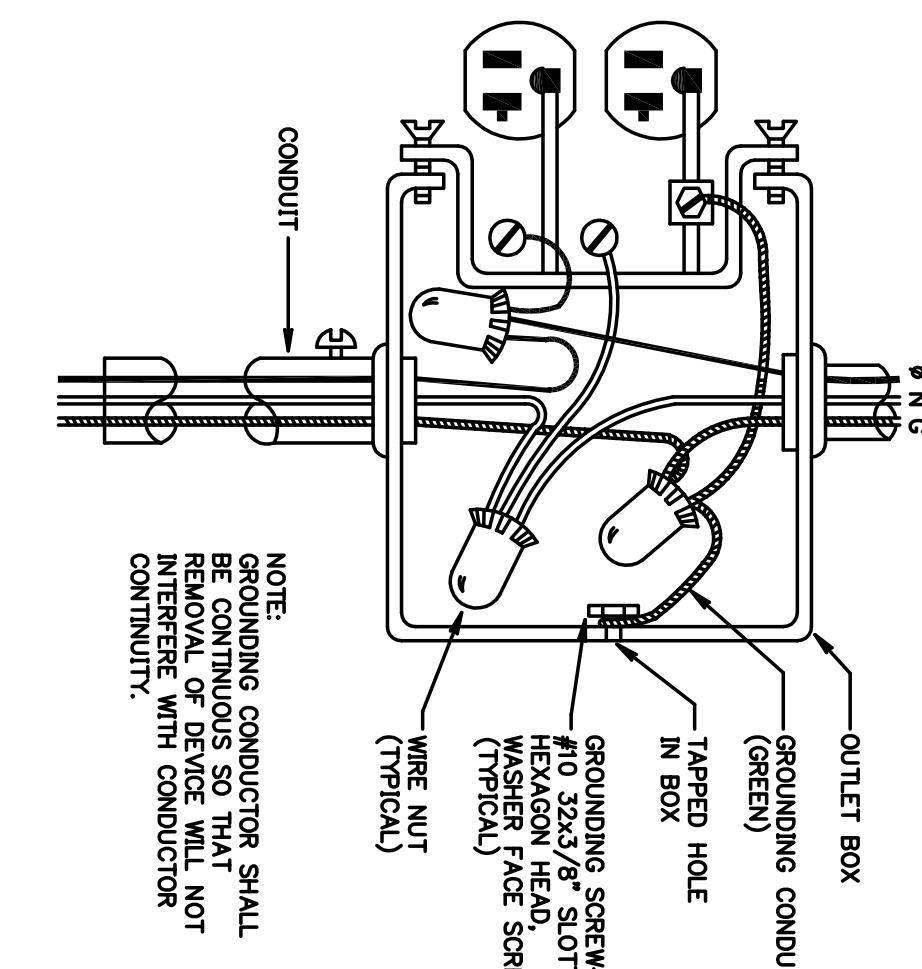
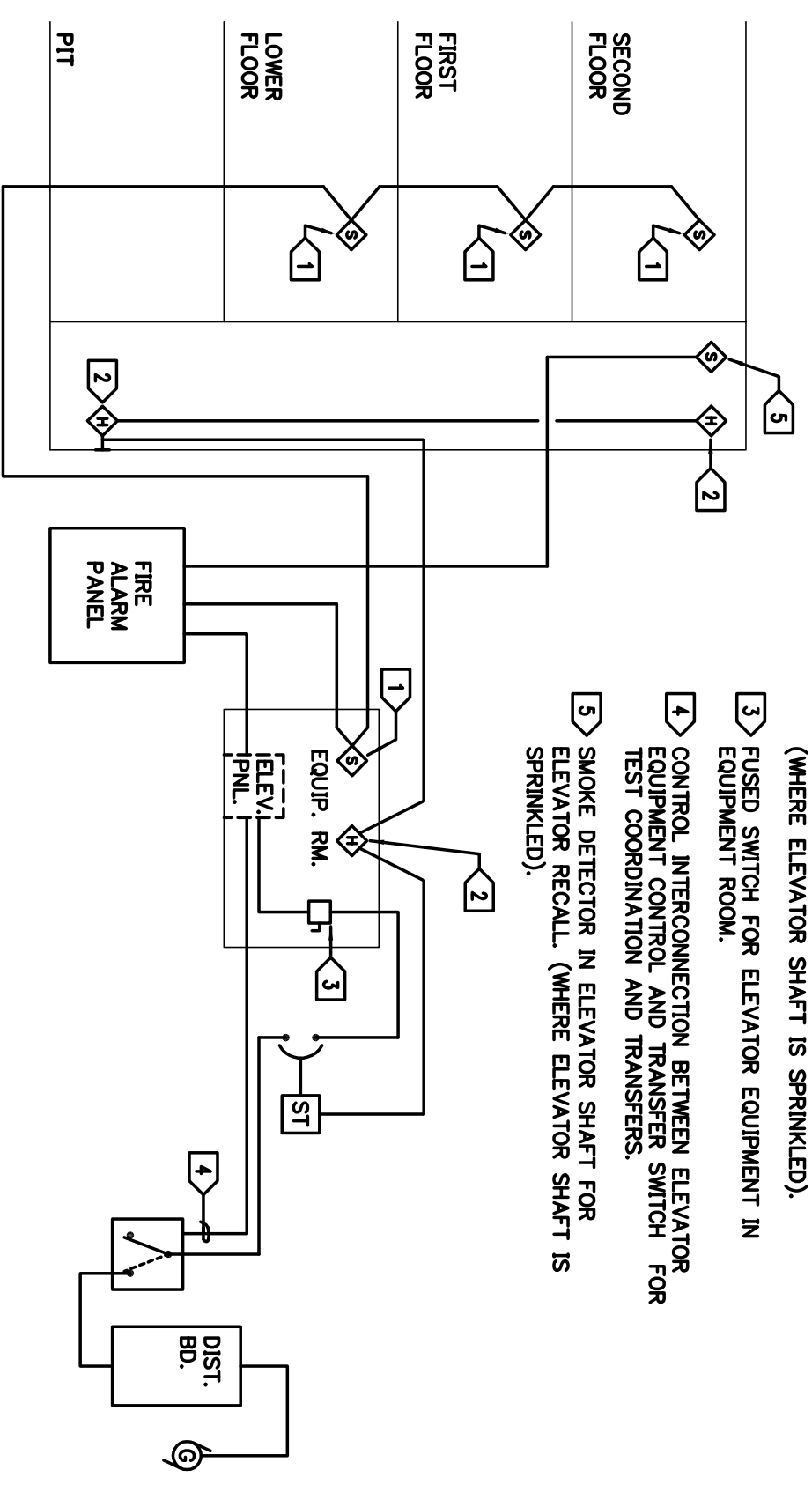
2 SEPARATELY DERIVED ELECTRICAL SYSTEMS GROUNDING

3 GROUNDING-LOW VOLTAGE SERVICE, SINGLE MAIN REMOTE TRANSFORMER

4 TYPICAL 120V MOTOR WIRING DIAGRAM

ELECTRICAL NOTES FOR TYPICAL ELEVATOR DETAIL:

- 1. SMOKE DETECTORS IN LOBBIES AND EQUIPMENT ROOM FOR ELEVATOR RECALL.
- 2. THERMAL DETECTOR IN ELEVATOR SHAFT, PIT, AND EQUIPMENT ROOM FOR POWER DISCONNECT.
- 3. FUSES SHALL BE PROVIDED FOR ELEVATOR EQUIPMENT IN EQUIPMENT ROOM.
- 4. CONTROL INTERCONNECTION BETWEEN ELEVATOR TEST, EQUIPMENT CONTROL, AND TRANSFER SWITCH FOR SMOKE DETECTOR IN ELEVATOR SHAFT FOR SMOKE DETECTOR DETECT (WHERE ELEVATOR SHAFT IS SPRINKLED).

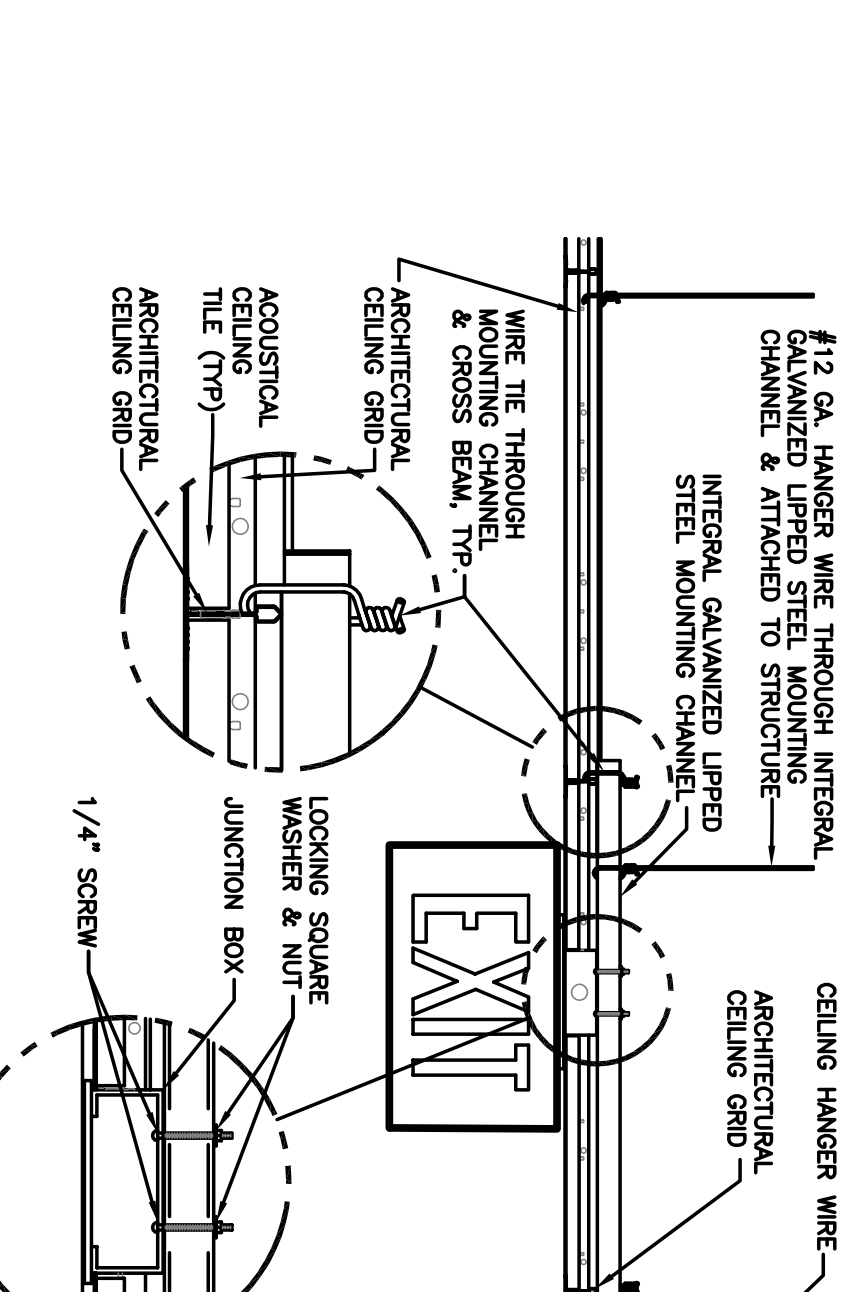
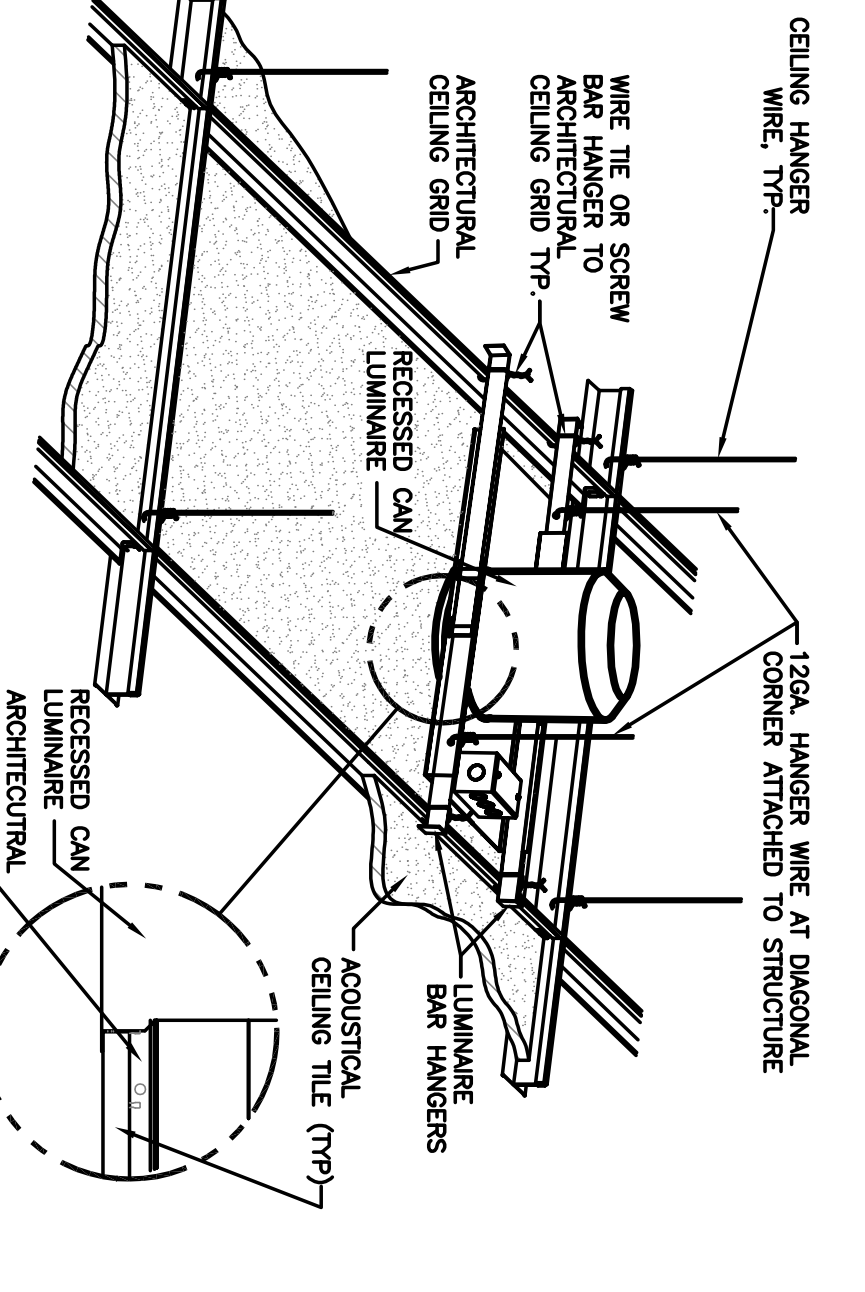
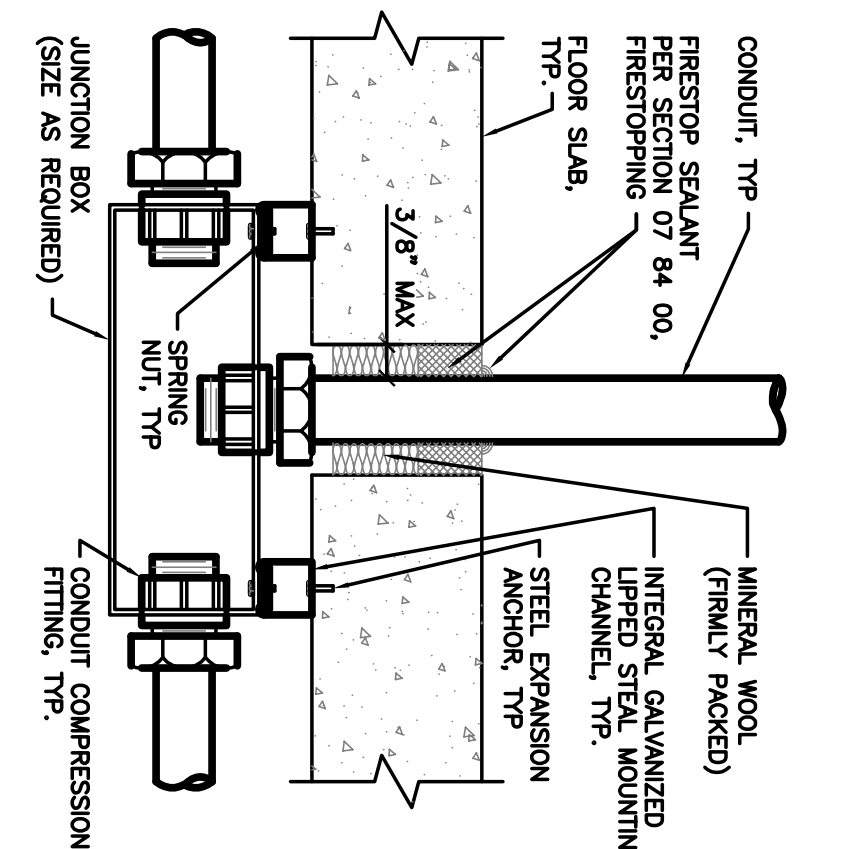
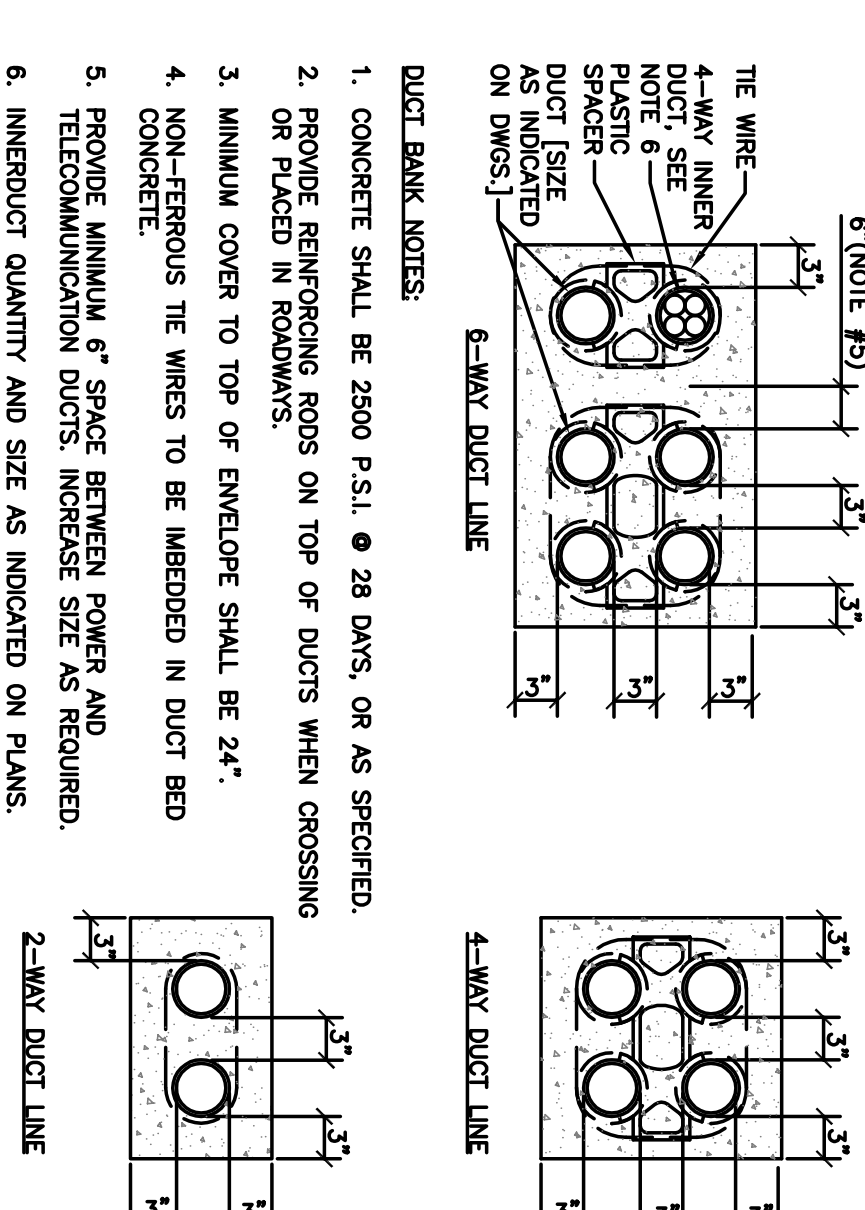


5 TYPICAL ELEVATOR DETAIL

6 RECEPTAGE WIRING DETAIL

7 CAST-IN PLACE SLEEVE FOR RACEWAY OR ELECTRICAL CABLES (WET OR DRY LOCATIONS)

8 GROUNDING BAR DETAIL



9 DUCT BANK DETAILS

10 FLOOR SLAB PENETRATION DETAIL

11 DOWNLIGHT MOUNTING

12 EXIT SIGN MOUNTING

Revision Schedule table with columns for Revision Number and Revision Date.

CONSULTANTS:

CIVIL/LANDSCAPE/SURVEYOR
FIRE PROTECTION

ARCHITECT/ENGINEERS/COST ESTIMATORS:

ELECTRICAL DETAILS

Project Title

Project Number

Building Number

100%-FINAL-NOT FOR CONSTRUCTION FULLY SPRINKLERED

SAVRE ASSOCIATES
216 South DuJain Ave
Sioux Falls, SD 57104
t: 605-332-7211
f: 605-332-7222

FR&C
1520 Main Street
Indianapolis, IN 46224
t: 317-486-5188
f: 317-486-5189

ELLERBE BECKET
900 1st Avenue,
Suite 250
Minneapolis, MN 55402
612-376-2000

Ellerbe Becket, Inc.
Ellerbe Becket Architects
and Engineers Inc.
Ellerbe Becket Architects
and Engineers
2009

Approved: Project Director

Location

Dwg. 18 of 18

Department of Veterans Affairs