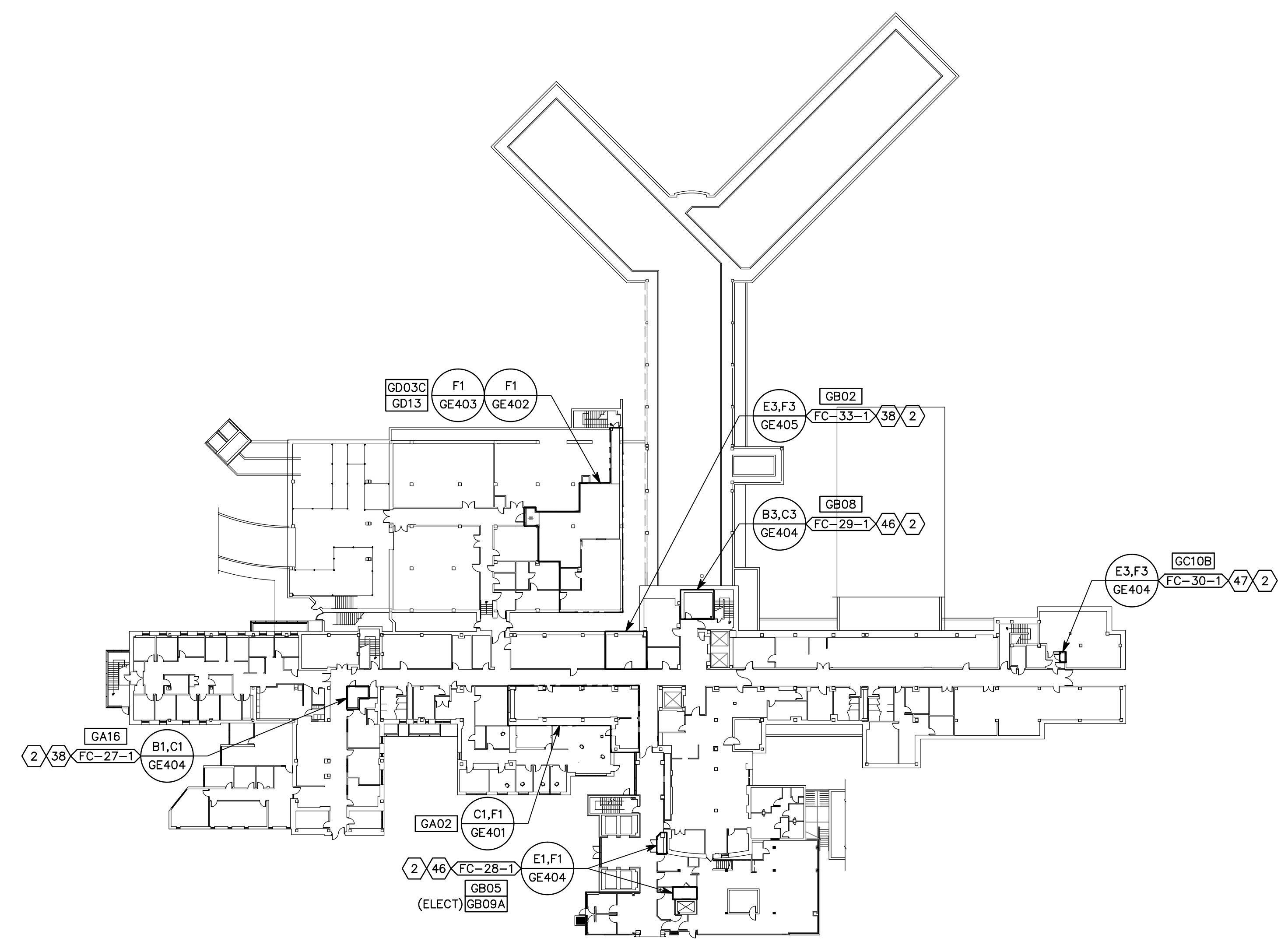
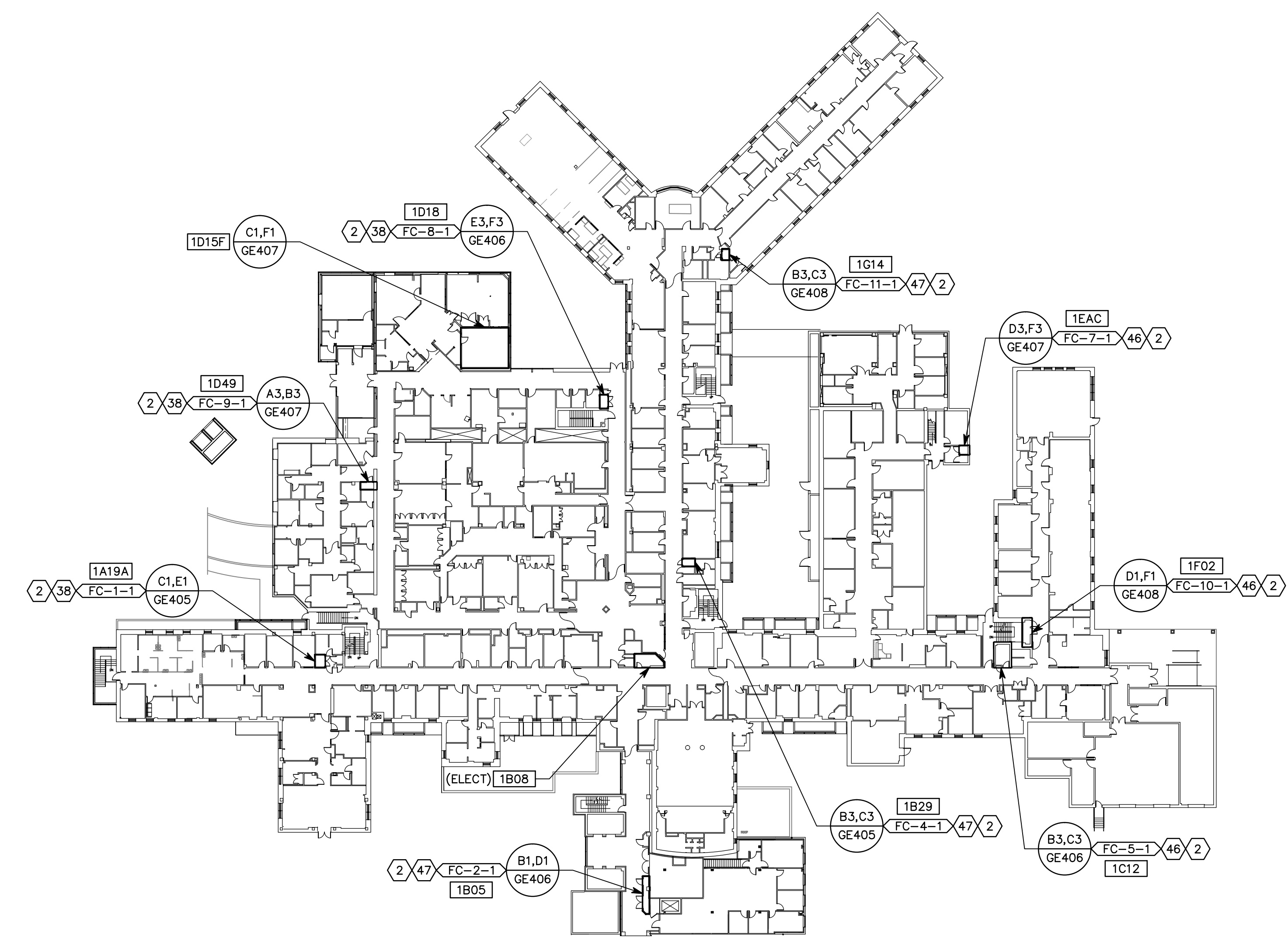


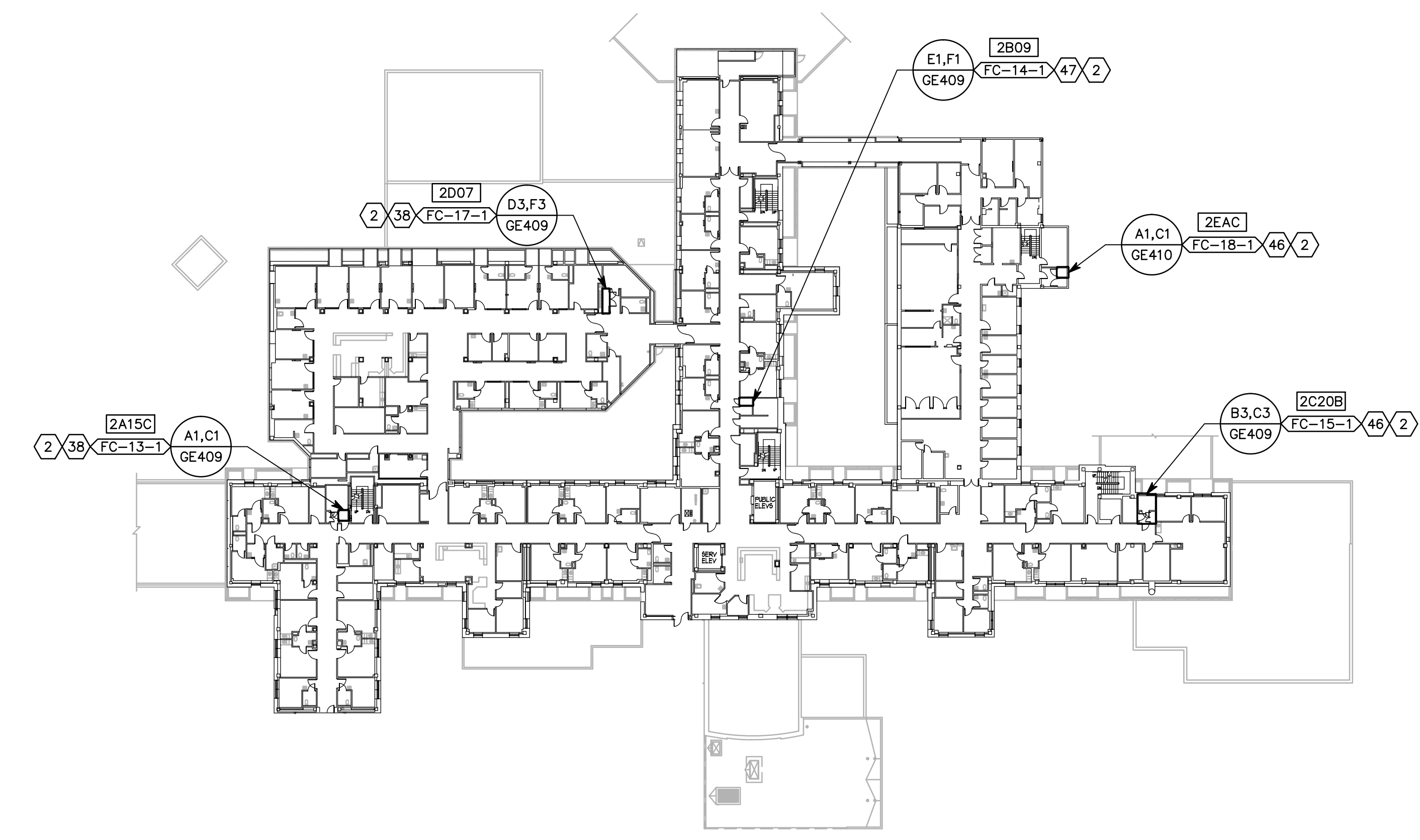
three inches = one foot  
one and one half inches = one foot  
one inch = one foot  
three quarters inch = one foot  
one half inch = one foot  
three eighths inch = one foot  
one quarter inch = one foot  
one eighth inch = one foot



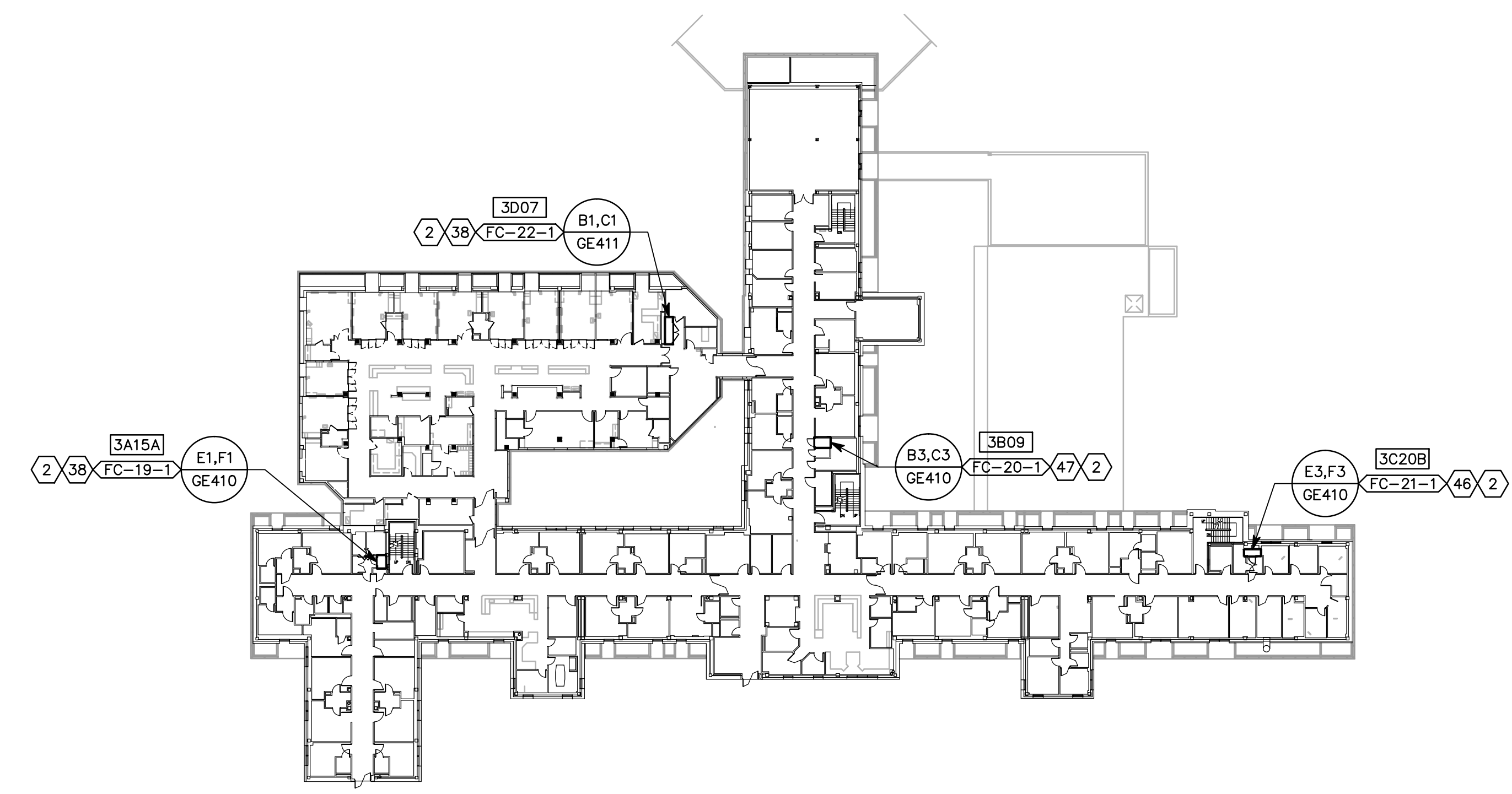
C1 BUILDING 01 LEVEL GROUND  
SCALE: 1" = 40'-0"



C5 BUILDING 01 LEVEL 01  
SCALE: 1" = 40'-0"



F1 BUILDING 01 LEVEL 02  
SCALE: 1" = 40'-0"



F5 BUILDING 01 LEVEL 03  
SCALE: 1" = 40'-0"

GENERAL SHEET NOTES

1. KEYNOTES REFERENCED ON THIS DRAWING ARE LOCATED ON SHEET GE001.

ROOFING NOTE:  
CONTRACTOR SHALL PATCH & REPAIR (E) ROOFING SYSTEM AS NEEDED TO INSTALL NEW MECHANICAL ROOF-TOP UNITS & THROUGH-ROOF PENETRATIONS. SEE DETAILS 6 & 7/GE502 FOR SINGLE PLY ROOFING APPLICATION, AND DETAILS 8 & 9/GE502 FOR BUILT-UP ROOFING APPLICATION.  
MAKE ALL MODIFICATIONS & REPAIRS TO (E) ROOFING SYSTEM PER MANUFACTURER'S SPECIFICATIONS.

LEGEND  
PROVIDE AND INSTALL 3'-0" WIDE PROTECTIVE WALKWAY AROUND NEW ROOF TOP MECHANICAL UNITS - 80 MIL. PVC, FULLY ADHERE TO (E) SINGLE PLY MEMBRANE ROOFING

CONSULTANTS:		ARCHITECT/ENGINEERS:		Drawing Title REFERENCE FLOOR PLANS	Project Title RENOVATE INFORMATION TECHNOLOGY CLOSETS	Project Number 660-11-113	Office of Construction and Facilities Management Department of Veterans Affairs
				Approved: Project Director	Location VAMC - SLC, UT	Building Number B.01	
Revisions:					Date OCTOBER 30, 2012	Drawn PSS	
Date					Checked TXH	Drawing Number GE101 Dwg. 5 of 51	