

three inches = one foot  
one and one half inches = one foot  
one inch = one foot  
three quarters inch = one foot  
one half inch = one foot  
three eighths inch = one foot  
one quarter inch = one foot  
one eighth inch = one foot

FINAL CONSTRUCTION DOCUMENTS

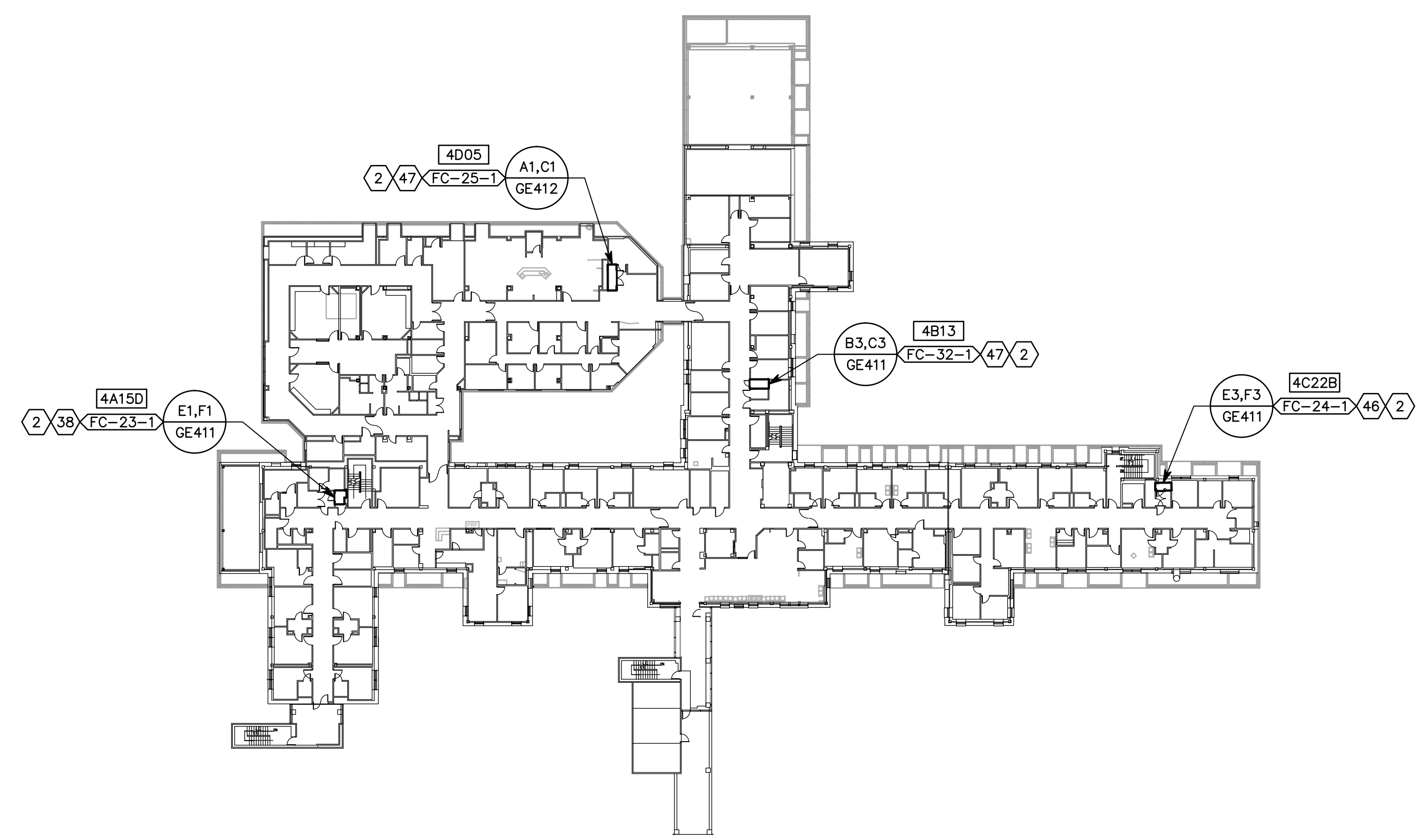
GENERAL SHEET NOTES

1. KEYNOTES REFERENCED ON THIS DRAWING ARE LOCATED ON SHEET GE001.

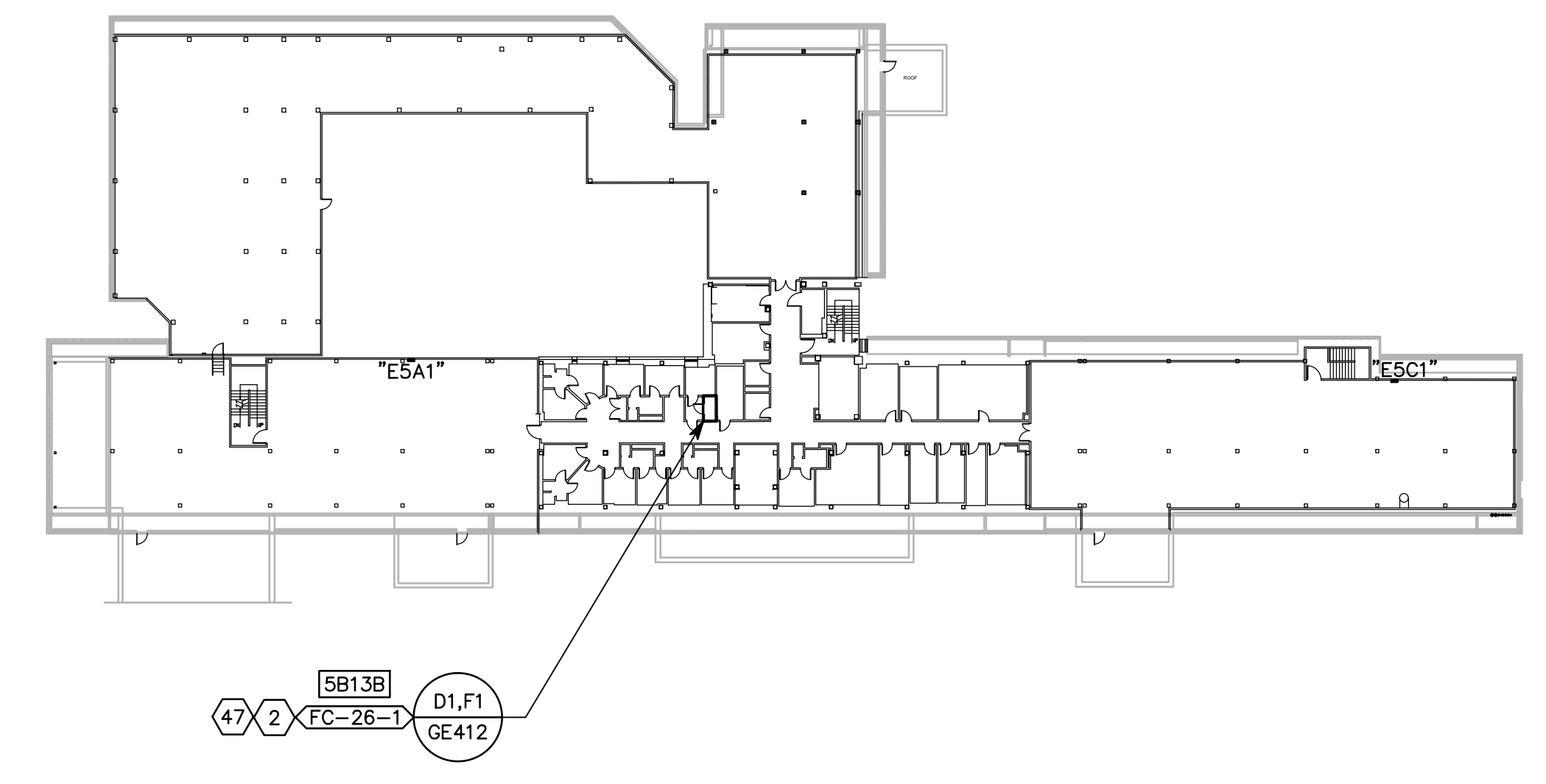
ROOFING NOTE:  
CONTRACTOR SHALL PATCH & REPAIR (E) ROOFING SYSTEM AS NEEDED TO INSTALL NEW MECHANICAL ROOF-TOP UNITS & THROUGH-ROOF PENETRATIONS. SEE DETAILS 6 & 7/GE502 FOR SINGLE PLY ROOFING APPLICATION, AND DETAILS 8 & 9/GE502 FOR BUILT-UP ROOFING APPLICATION.  
MAKE ALL MODIFICATIONS & REPAIRS TO (E) ROOFING SYSTEM PER MANUFACTURER'S SPECIFICATIONS.

LEGEND

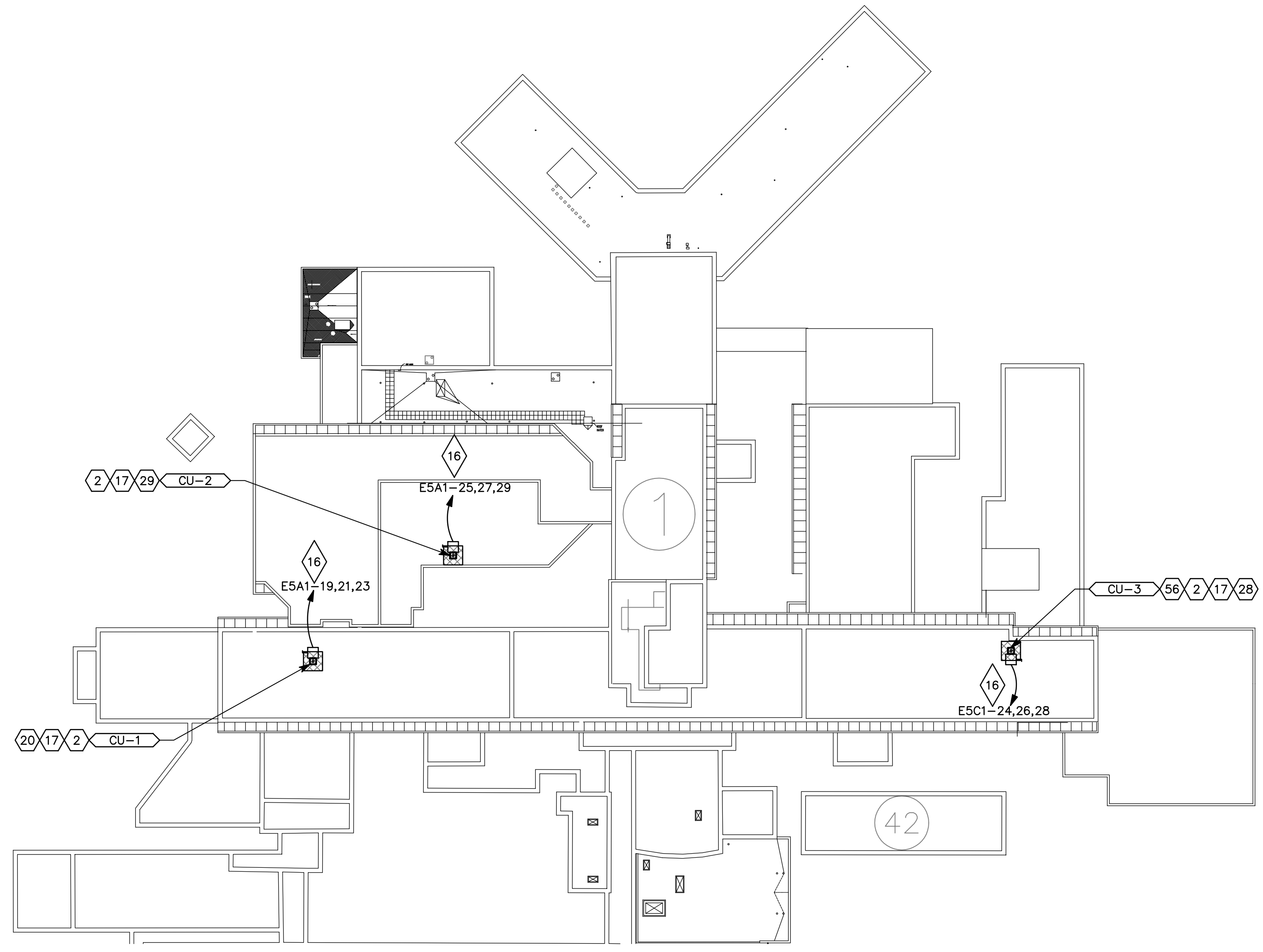
PROVIDE AND INSTALL 3'-0" WIDE PROTECTIVE WALKWAY AROUND NEW ROOF TOP MECHANICAL UNITS - 80 MIL. PVC, FULLY ADHERE TO (E) SINGLE PLY MEMBRANE ROOFING



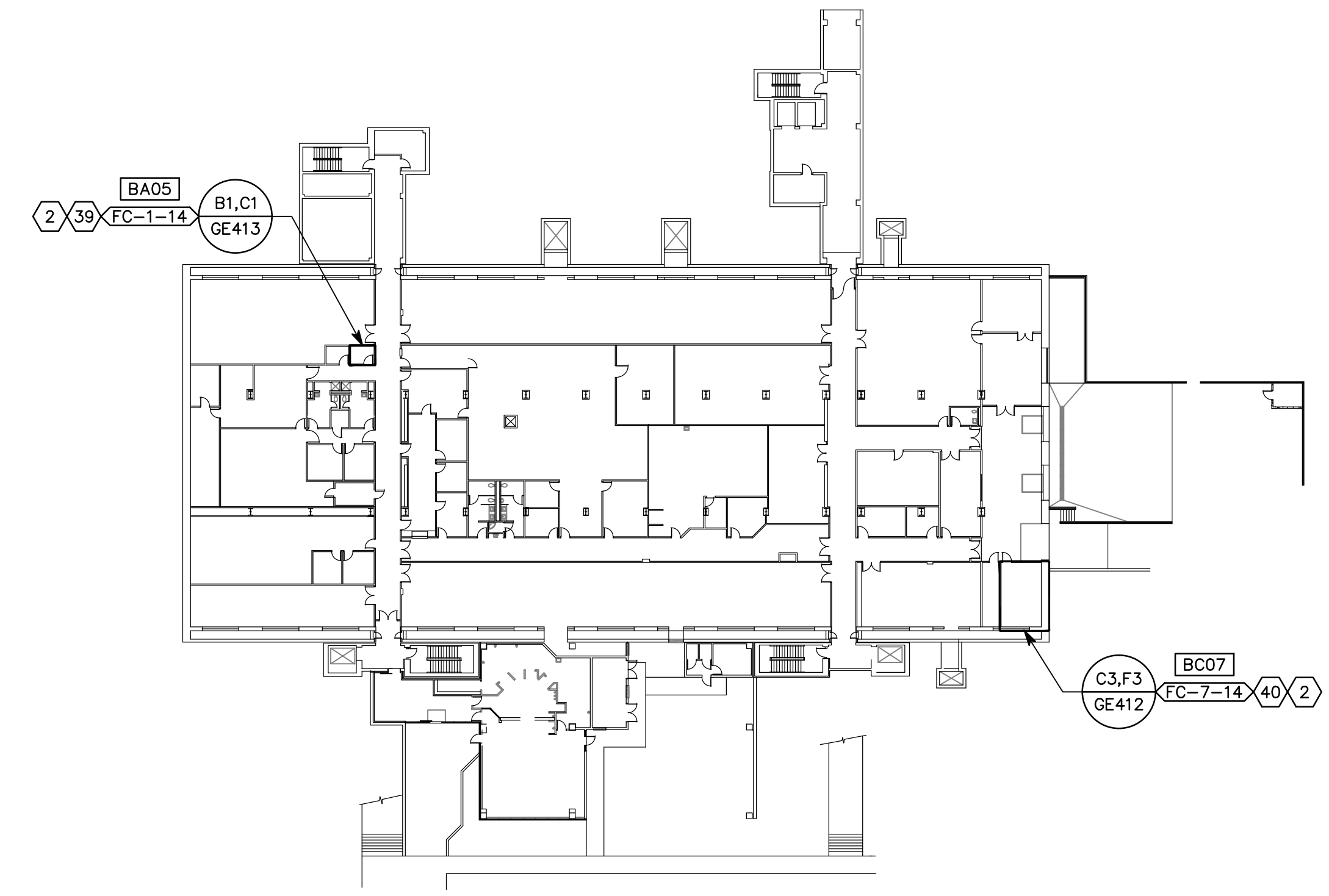
C1 BUILDING 01 LEVEL 04  
SCALE: 1" = 40'-0"



C5 BUILDING 01 LEVEL 05  
SCALE: 1" = 40'-0"



F1 BUILDING 01 ROOF  
SCALE: 1" = 40'-0"



F5 BUILDING 14 LEVEL BASEMENT  
SCALE: 1" = 40'-0"

|                    |              |  |   |  |  |  |                            |                              |                            |  |              |   |  |
|--------------------|--------------|--|---|--|--|--|----------------------------|------------------------------|----------------------------|--|--------------|---|--|
| Revisions:<br>Date | CONSULTANTS: |  | ARCHITECT/ENGINEERS:  |  | Drawing Title<br>REFERENCE FLOOR PLANS   | Project Title<br>RENOVATE INFORMATION TECHNOLOGY CLOSETS |                            | Project Number<br>660-11-113 |                            | Office of Construction and Facilities Management<br>Department of Veterans Affairs |              |   |  |
|                    |              |  | 17 Exchange Place, Salt Lake City, UT 84111<br>office: (801) 463-7103, mobile: (801) 541-7538<br>fax: (801) 463-7966, www.tsa-usa.com |  | 324 S. State St., Suite 400<br>Salt Lake City, UT 84111<br>800-678-7077<br>801-328-5151<br>fax: 801-328-5155<br>www.spectrum-engineers.com |  | Location<br>VAMC - SLC, UT |                              | Building Number<br>B.01,14 |  |              |   |  |
|                    |              |  | Tracy D. Stocking, AIA tracy@tsa-usa.com  |  | Approved: Project Director   |  | Date<br>OCTOBER 30, 2012   |                              | Checked<br>TXH             |  | Drawn<br>PSS | Drawing Number<br>GE102<br>Dwg. 6 of 51 |  |
|                    |              |  |   |  |  |  |                            |                              |                            |  |              |   |  |