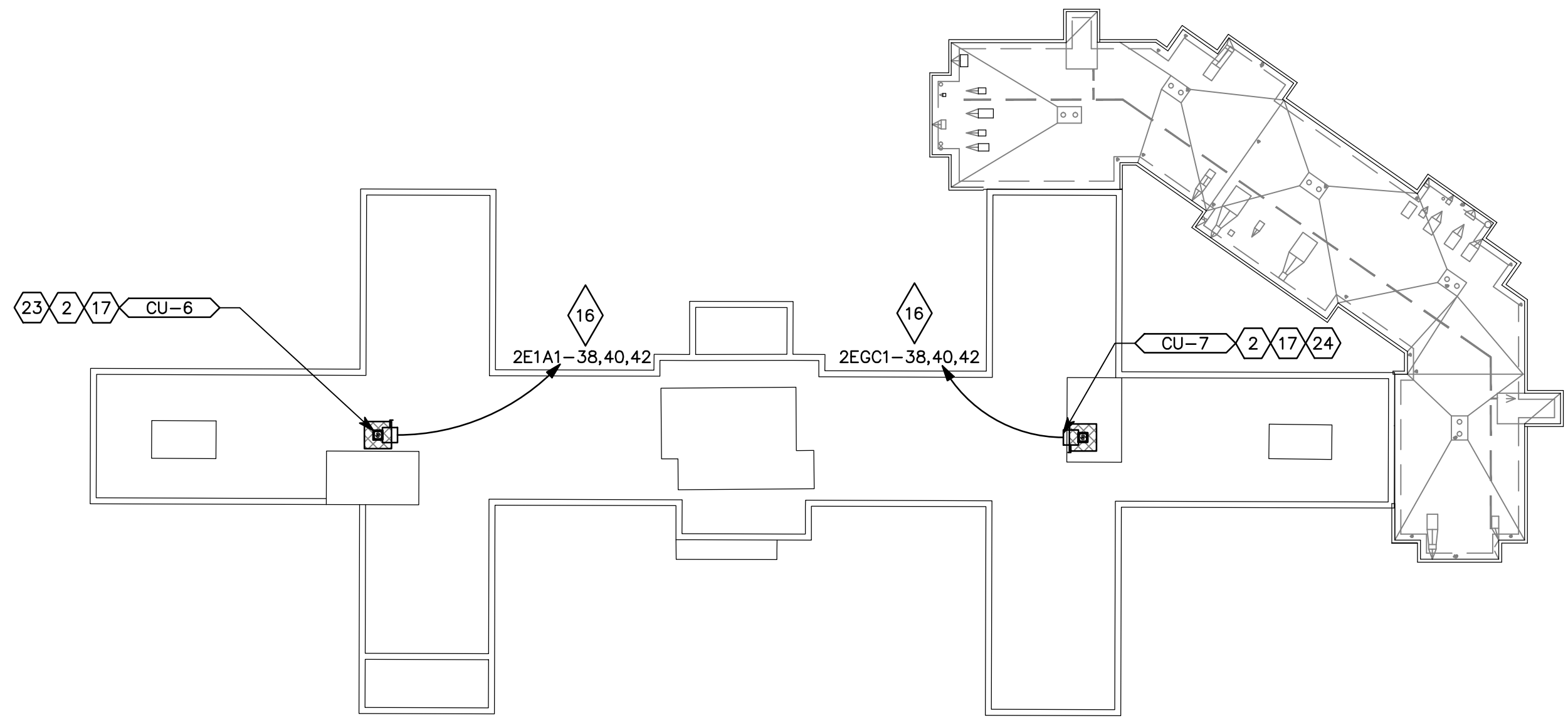
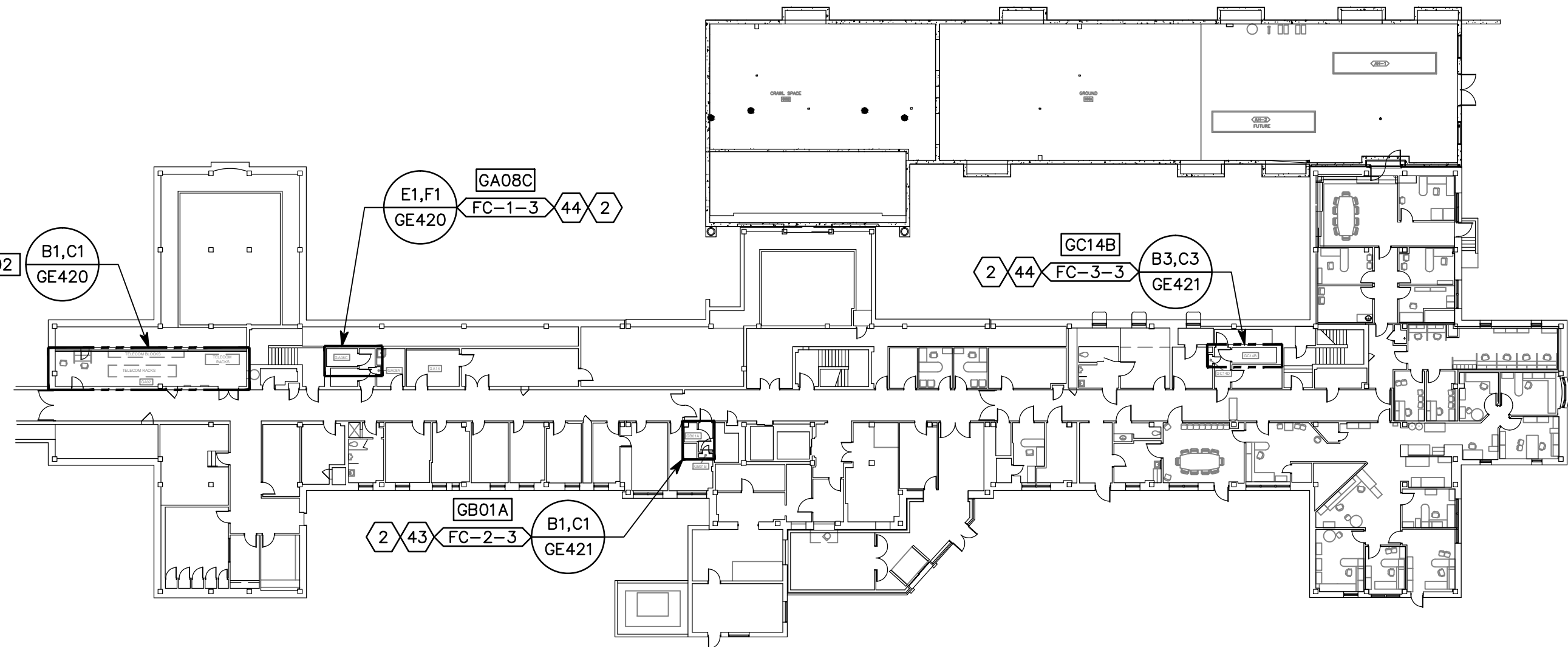


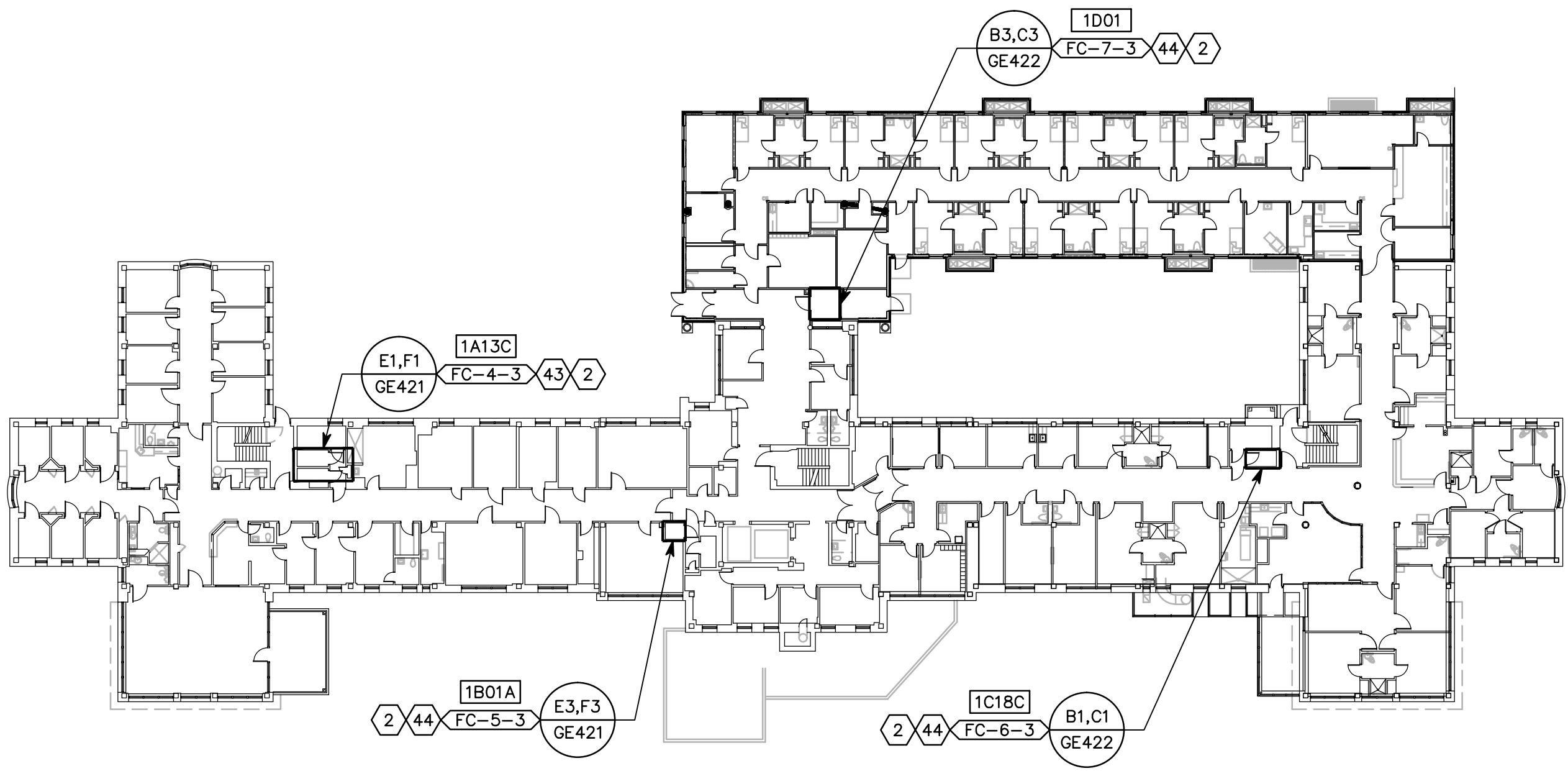
three inches = one foot  
one and one half inches = one foot  
one inch = one foot  
three quarters inch = one foot  
one half inch = one foot  
three eighths inch = one foot  
one quarter inch = one foot  
one eighth inch = one foot



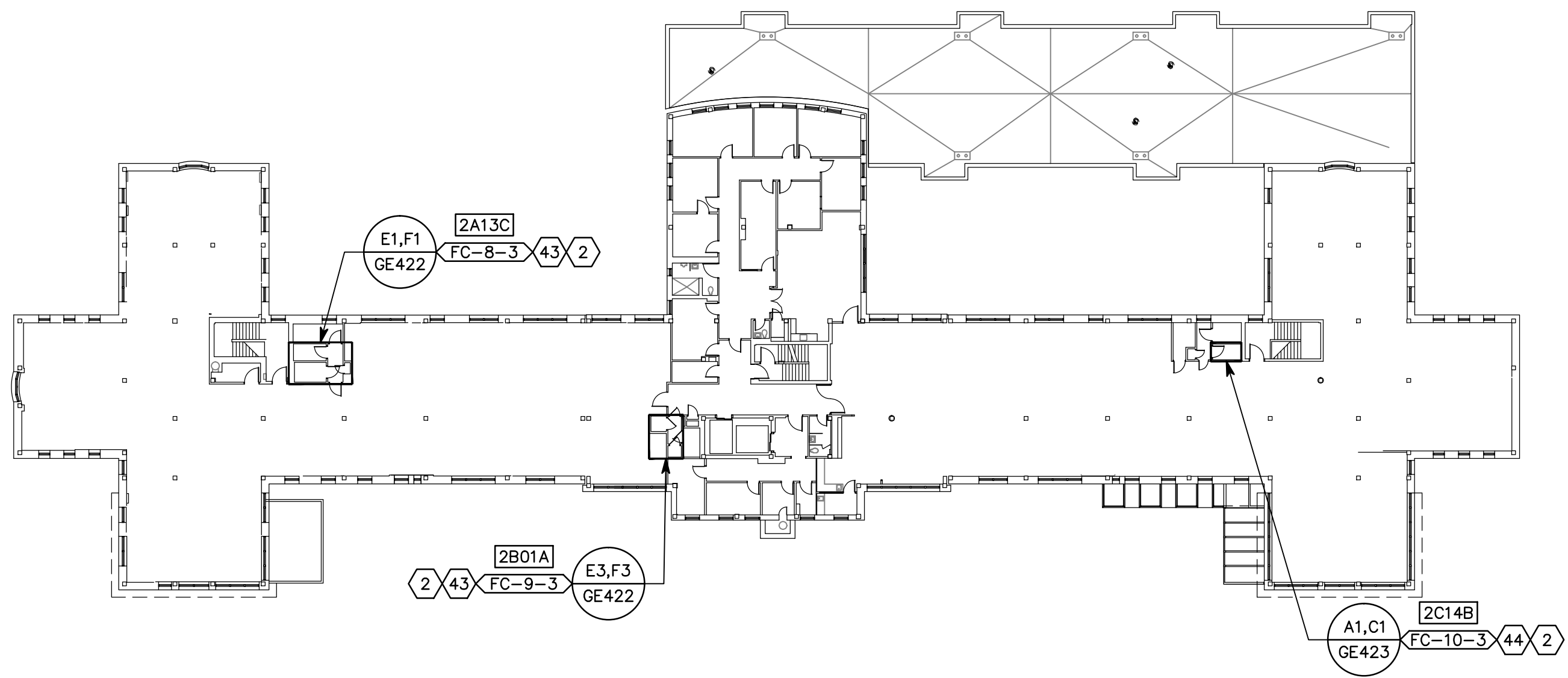
C1 BUILDING 02 ROOF  
SCALE: 1" = 30'-0"



C5 BUILDING 03 LEVEL GROUND  
SCALE: 1" = 30'-0"



F1 BUILDING 03 LEVEL 01  
SCALE: 1" = 30'-0"



F5 BUILDING 03 LEVEL 02  
SCALE: 1" = 30'-0"

### GENERAL SHEET NOTES

- KEYNOTES REFERENCED ON THIS DRAWING ARE LOCATED ON SHEET GE001.

**ROOFING NOTE:**  
CONTRACTOR SHALL PATCH & REPAIR (E) ROOFING SYSTEM AS NEEDED TO INSTALL NEW MECHANICAL ROOF-TOP UNITS & THROUGH-ROOF PENETRATIONS. SEE DETAILS 6 & 7/GE502 FOR SINGLE PLY ROOFING APPLICATION, AND DETAILS 8 & 9/GE502 FOR BUILT-UP ROOFING APPLICATION.  
MAKE ALL MODIFICATIONS & REPAIRS TO (E) ROOFING SYSTEM PER MANUFACTURER'S SPECIFICATIONS.

### LEGEND

- PROVIDE AND INSTALL 3'-0" WIDE PROTECTIVE WALKWAY AROUND NEW ROOF TOP MECHANICAL UNITS - 80 MIL. PVC, FULLY ADHERE TO (E) SINGLE PLY MEMBRANE ROOFING

<b>Revisions:</b> <table border="1"><tr><td> </td><td> </td></tr><tr><td> </td><td> </td></tr><tr><td> </td><td> </td></tr><tr><td> </td><td> </td></tr></table>									<b>CONSULTANTS:</b> <table border="1"><tr><td> </td><td> </td></tr><tr><td> </td><td> </td></tr><tr><td> </td><td> </td></tr><tr><td> </td><td> </td></tr></table>									 <b>ARCHITECT/ENGINEERS:</b>  <b>TRACY STOCKING &amp; ASSOCIATES</b> 17 Exchange Place, Salt Lake City, UT 84111 office: (801) 463-7103, mobile: (801) 541-7538 fax: (801) 463-7966, www.tsa-usa.com Tracy D. Stocking, AIA tracy@tsa-usa.com  <b>SPECTRUM ENGINEERS</b> 324 S. State St., Suite 400 Salt Lake City, UT 84111 800-678-7077 801-328-5151 fax: 801-328-5155 www.spectrum-engineers.com	<b>Drawing Title</b> REFERENCE FLOOR PLANS  <b>Approved:</b> Project Director	<b>Project Title</b> RENOVATE INFORMATION TECHNOLOGY CLOSETS  <b>Location</b> VAMC - SLC, UT  <b>Date</b> OCTOBER 30, 2012 <b>Checked</b> TXH <b>Drawn</b> PSS	<b>Project Number</b> 660-11-113 <b>Building Number</b> B.02, 03 <b>Drawing Number</b> GE105 Dwg. 9 of 51	<b>Office of Construction and Facilities Management</b> <b>Department of Veterans Affairs</b>