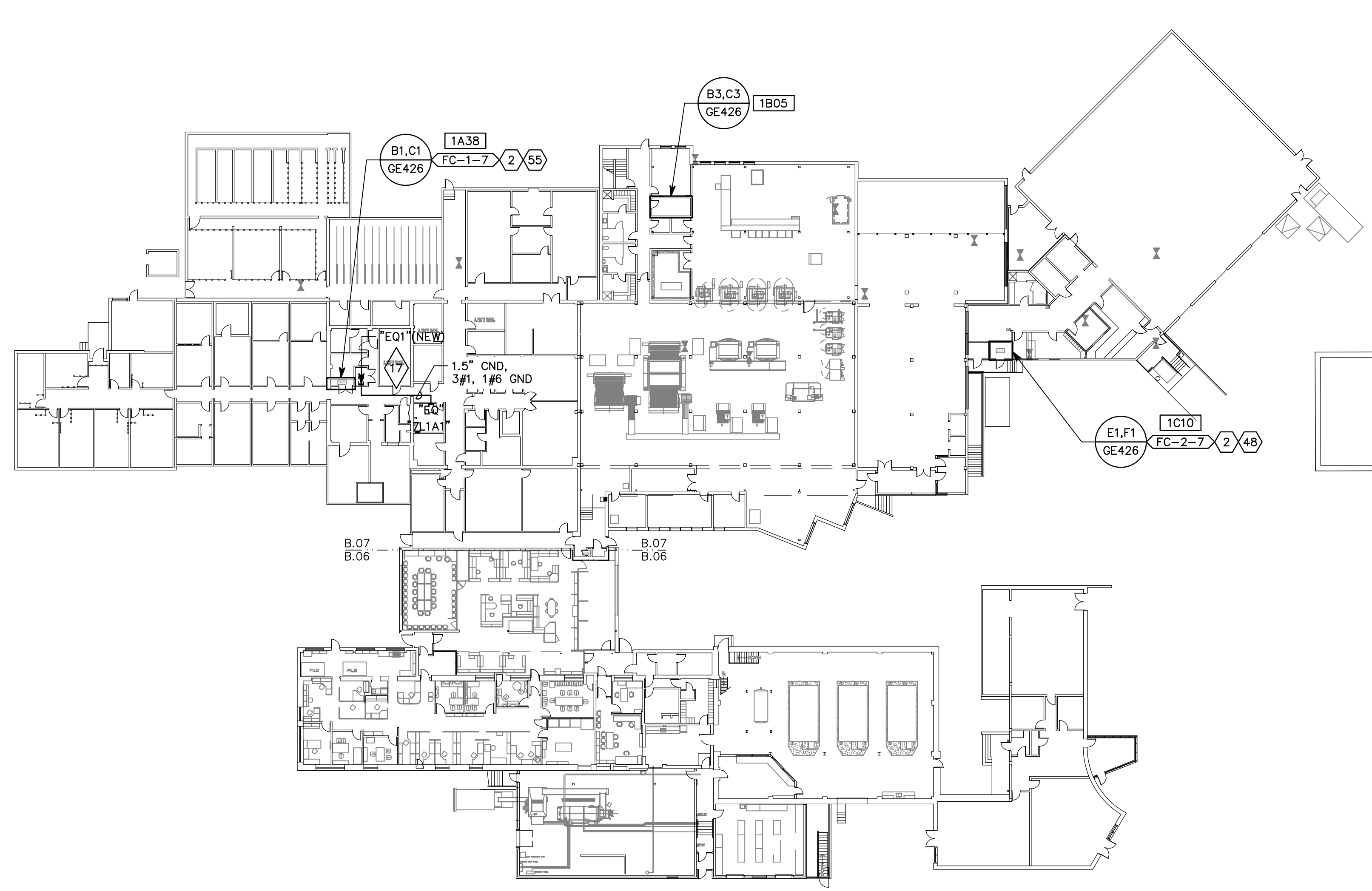


GENERAL
SHEET NOTES

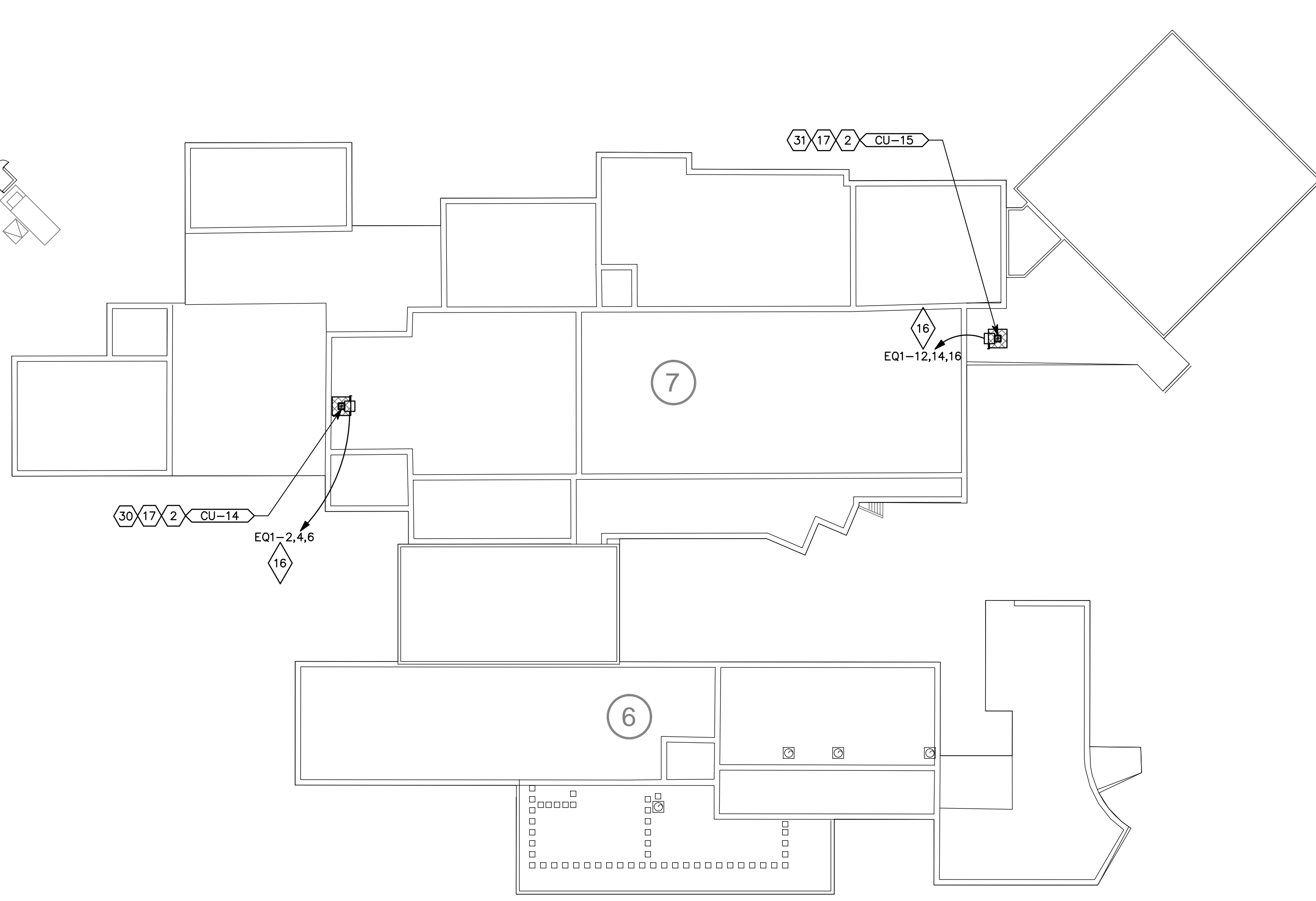
1. KEYNOTES REFERENCED ON THIS DRAWING
ARE LOCATED ON SHEET GE001.

ROOFING NOTE:
CONTRACTOR SHALL PATCH & REPAIR (E)
ROOFING SYSTEM AS NEEDED TO INSTALL NEW
MECHANICAL ROOF-TOP UNITS &
THROUGH-ROOF PENETRATIONS. SEE DETAILS
6 & 7/GE502 FOR SINGLE PLY ROOFING
APPLICATION, AND DETAILS 8 & 9/GE502 FOR
BUILT-UP ROOFING APPLICATION.
MAKE ALL MODIFICATIONS & REPAIRS TO (E)
ROOFING SYSTEM PER MANUFACTURER'S
SPECIFICATIONS.

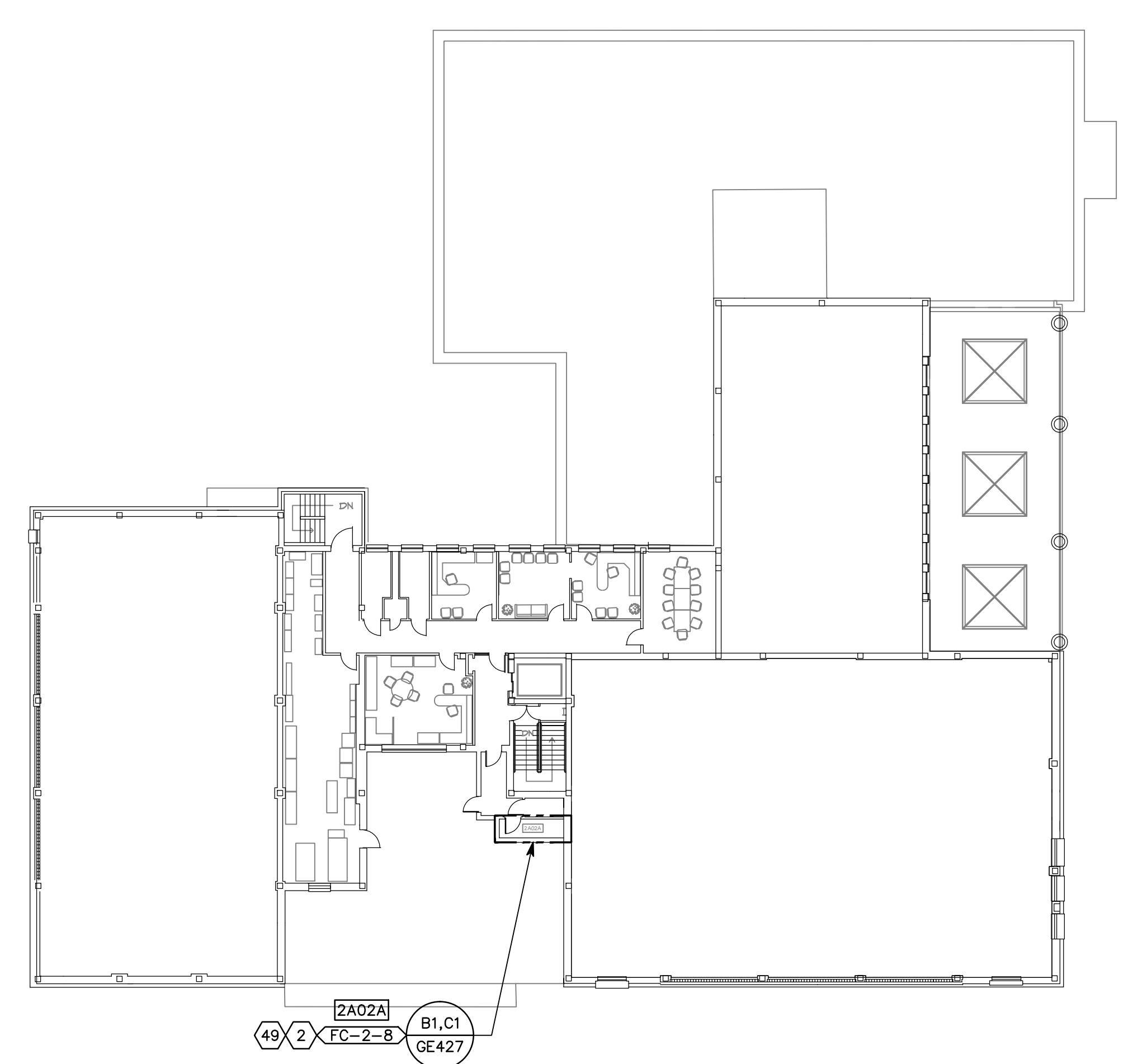
LEGEND
PROVIDE AND INSTALL 3'-0"
WIDE PROTECTIVE WALKWAY
AROUND NEW ROOF TOP
MECHANICAL UNITS - 80 MIL.
PVC, FULLY ADHERE TO (E)
SINGLE PLY MEMBRANE
ROOFING



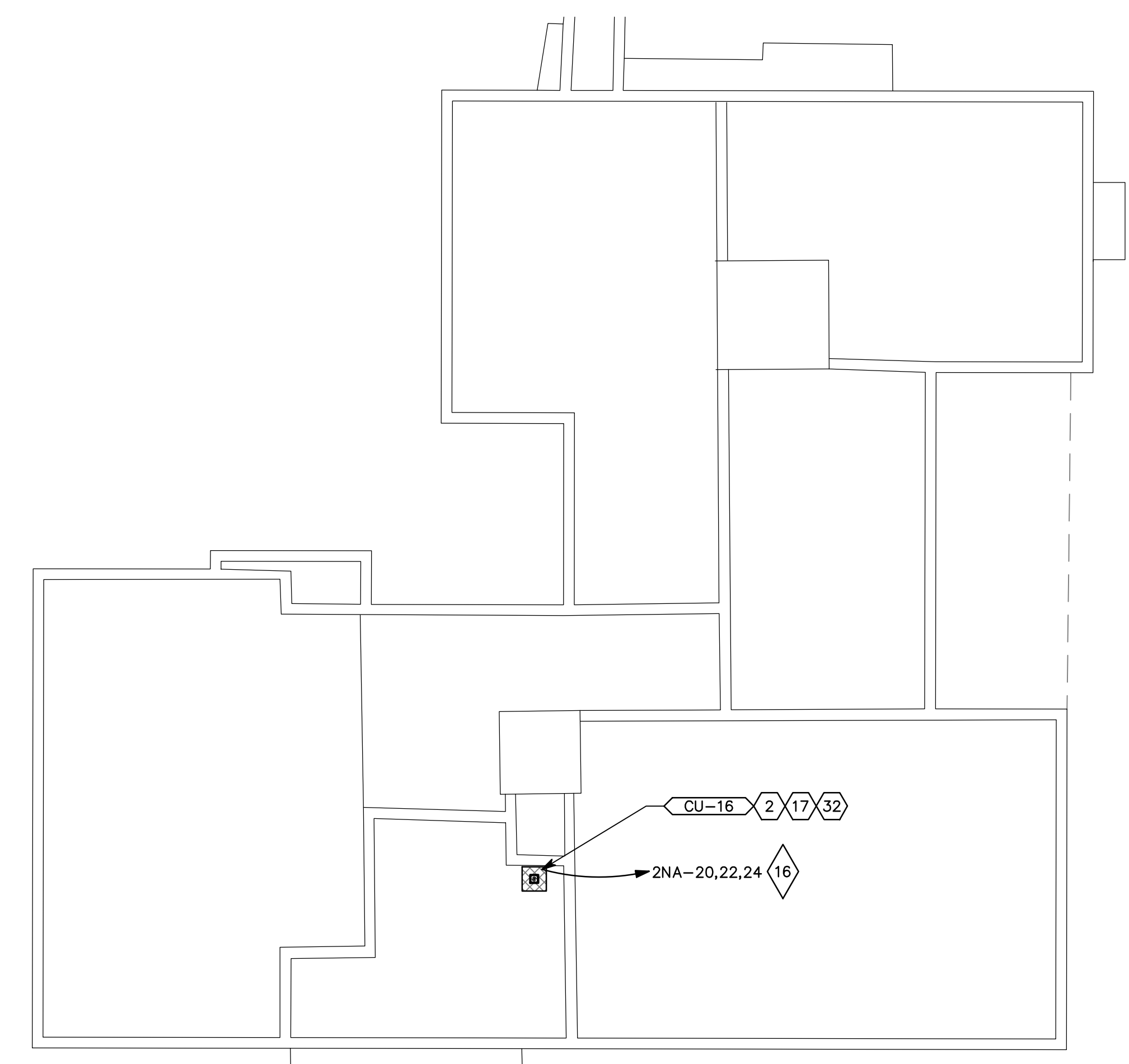
C1 BUILDING 06 & 07 LEVEL 01
SCALE: 1" = 30'-0"



C5 BUILDING 06 & 07 ROOF
SCALE: 1" = 30'-0"



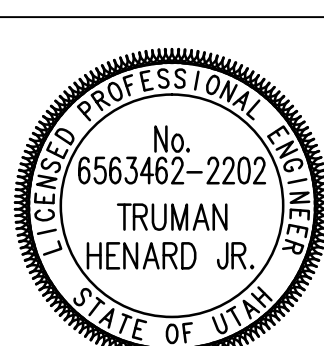
F1 BUILDING 08 LEVEL 02
SCALE: 1" = 20'-0"



F5 BUILDING 08 ROOF
SCALE: 1" = 20'-0"

CONSULTANTS:

ARCHITECT/ENGINEERS:



**TRACY STOCKING
& ASSOCIATES**
17 Exchange Place, Salt Lake City, UT 84111
office: (801) 463-7103, mobile: (801) 541-7538
fax: (801) 463-7966, www.tsa-usa.com
Tracy D. Stocking, AIA tracy@tsa-usa.com



324 S. State St., Suite 400
Salt Lake City, UT 84111
800-678-7077
801-328-5151
fax: 801-328-5155
www.spectrum-engineers.com

Drawing Title
REFERENCE FLOOR PLANS

Approved: Project Director

Project Title
RENOVATE INFORMATION
TECHNOLOGY CLOSETS

Location
VAMC - SLC, UT

Date
OCTOBER 30, 2012

Checked
TXH

Drawn
PSS

Project Number

660-11-113

Building Number

B.06, 07, 08

Drawing Number

GE108

Dwg. 12 of 51

Office of
Construction
and Facilities
Management



FINAL CONSTRUCTION DOCUMENTS