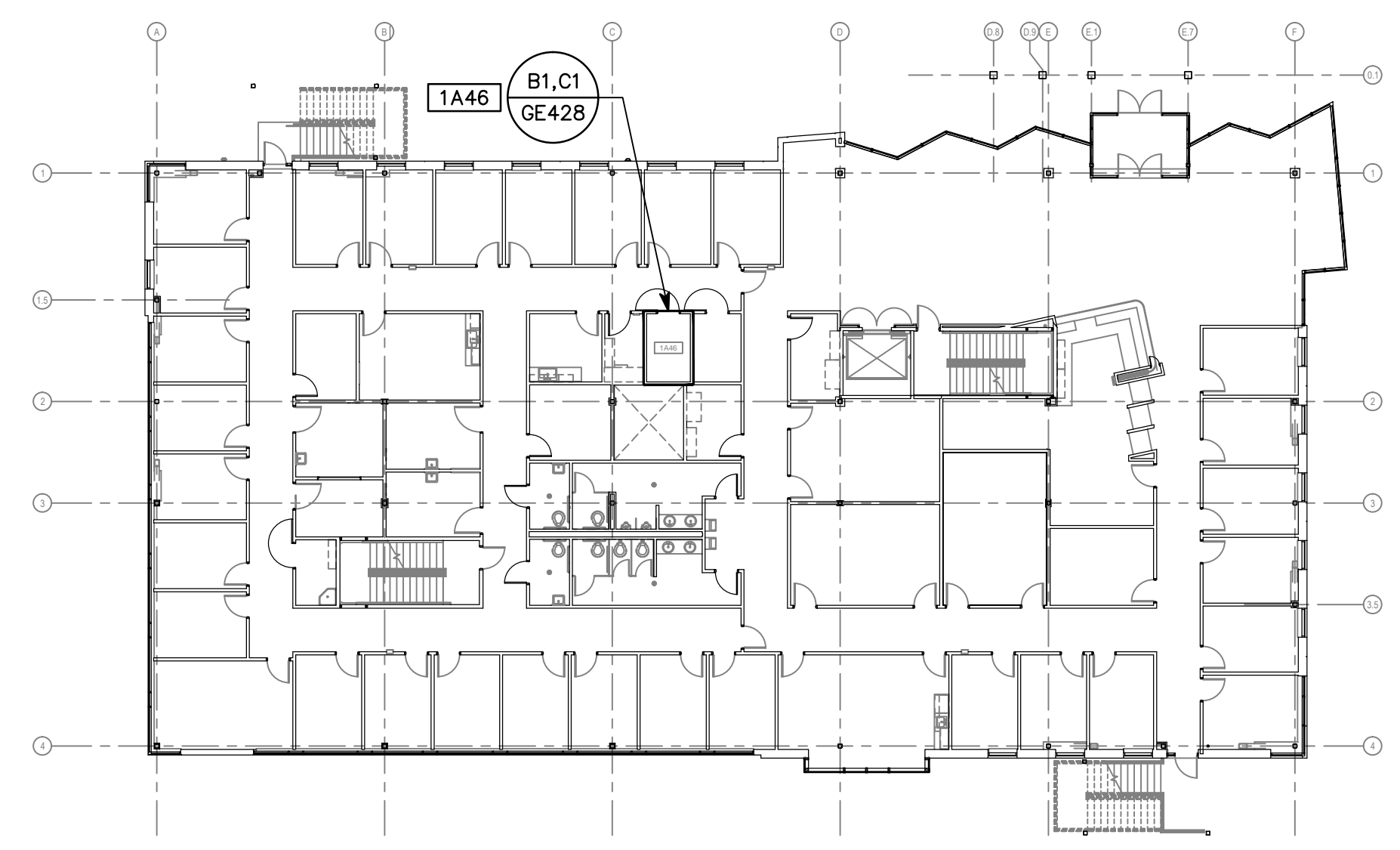


three inches = one foot
one and one half inches = one foot
one inch = one foot
three quarters inch = one foot
one half inch = one foot
three eighths inch = one foot
one quarter inch = one foot
one eighth inch = one foot

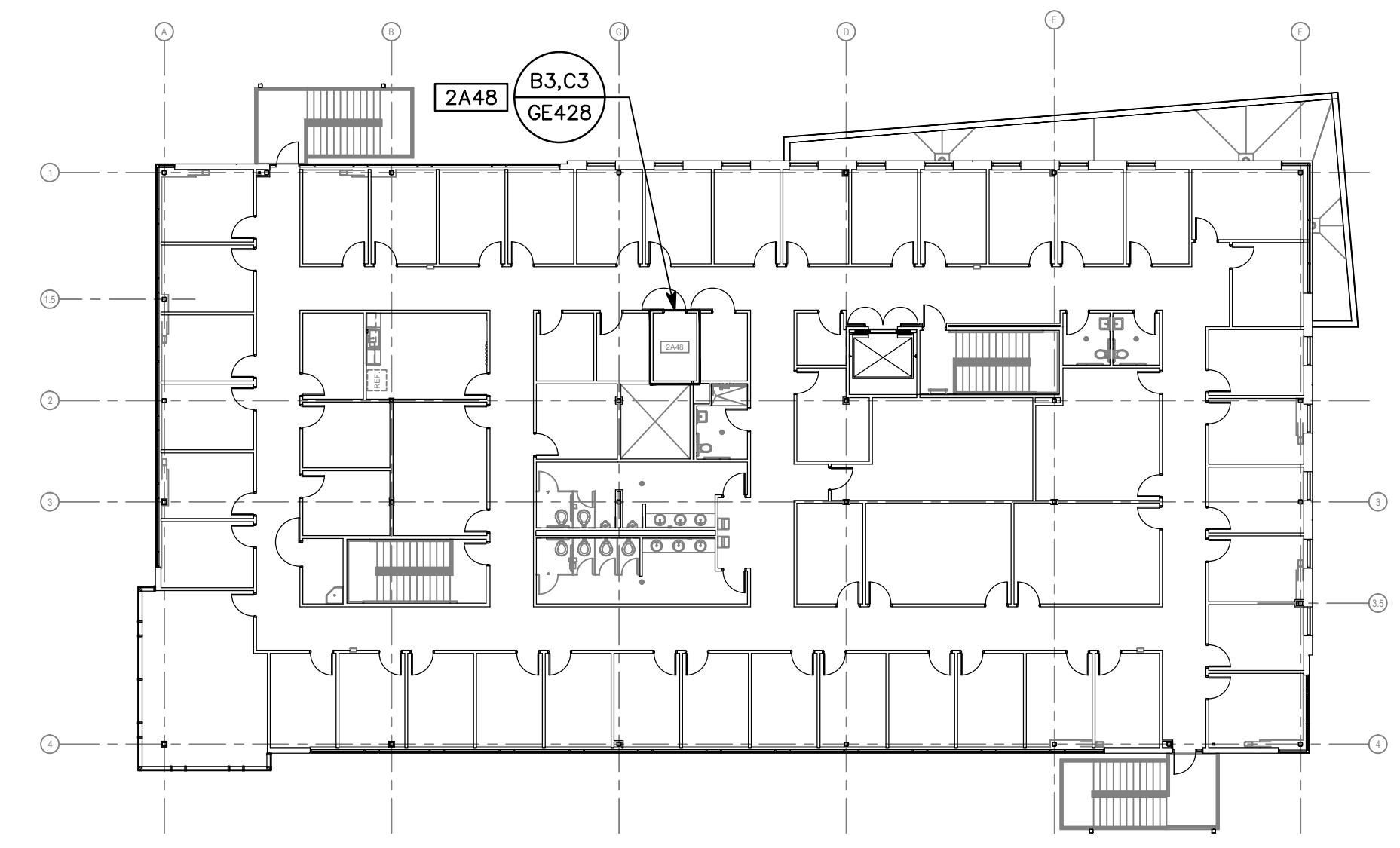
A
B
C
D
E
F

GENERAL SHEET NOTES

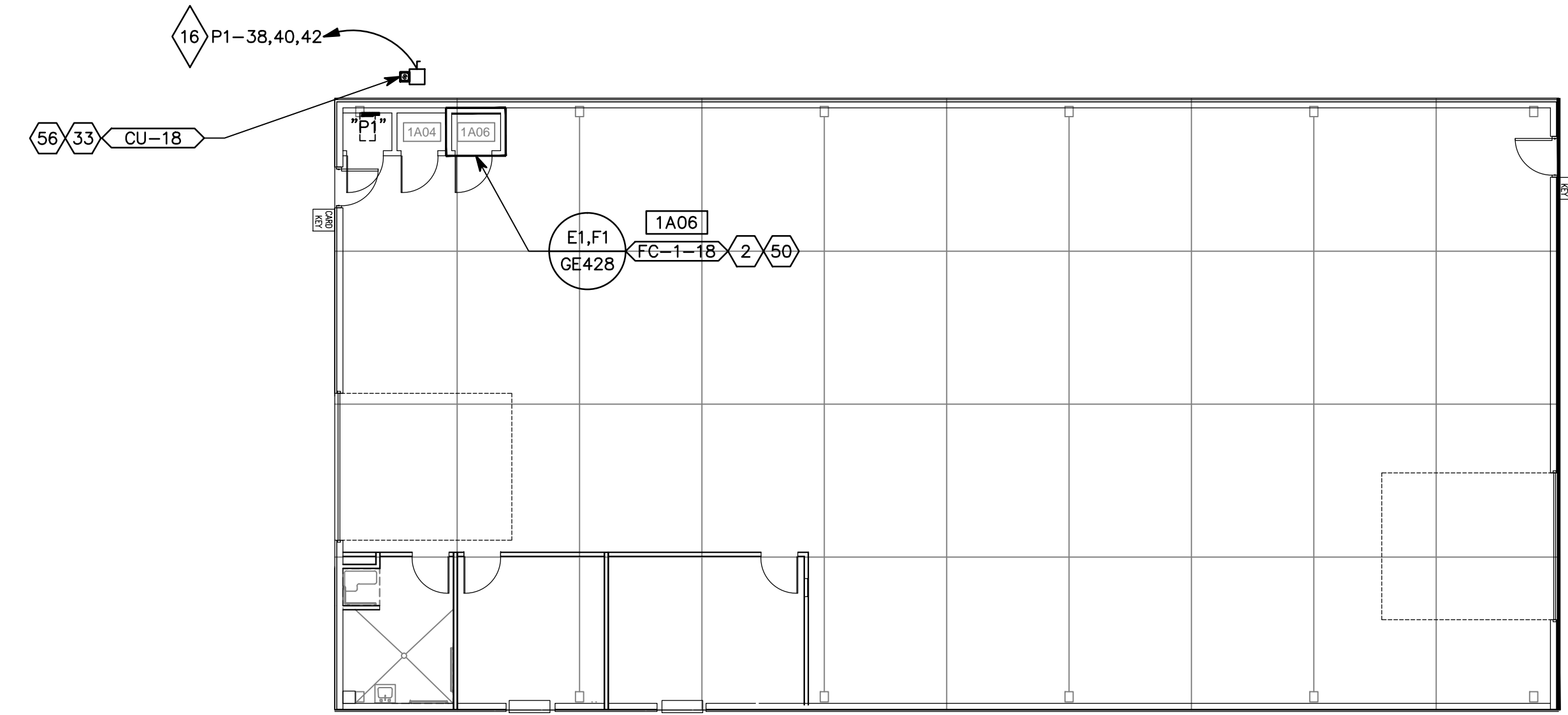
1. KEYNOTES REFERENCED ON THIS DRAWING ARE LOCATED ON SHEET GE001.



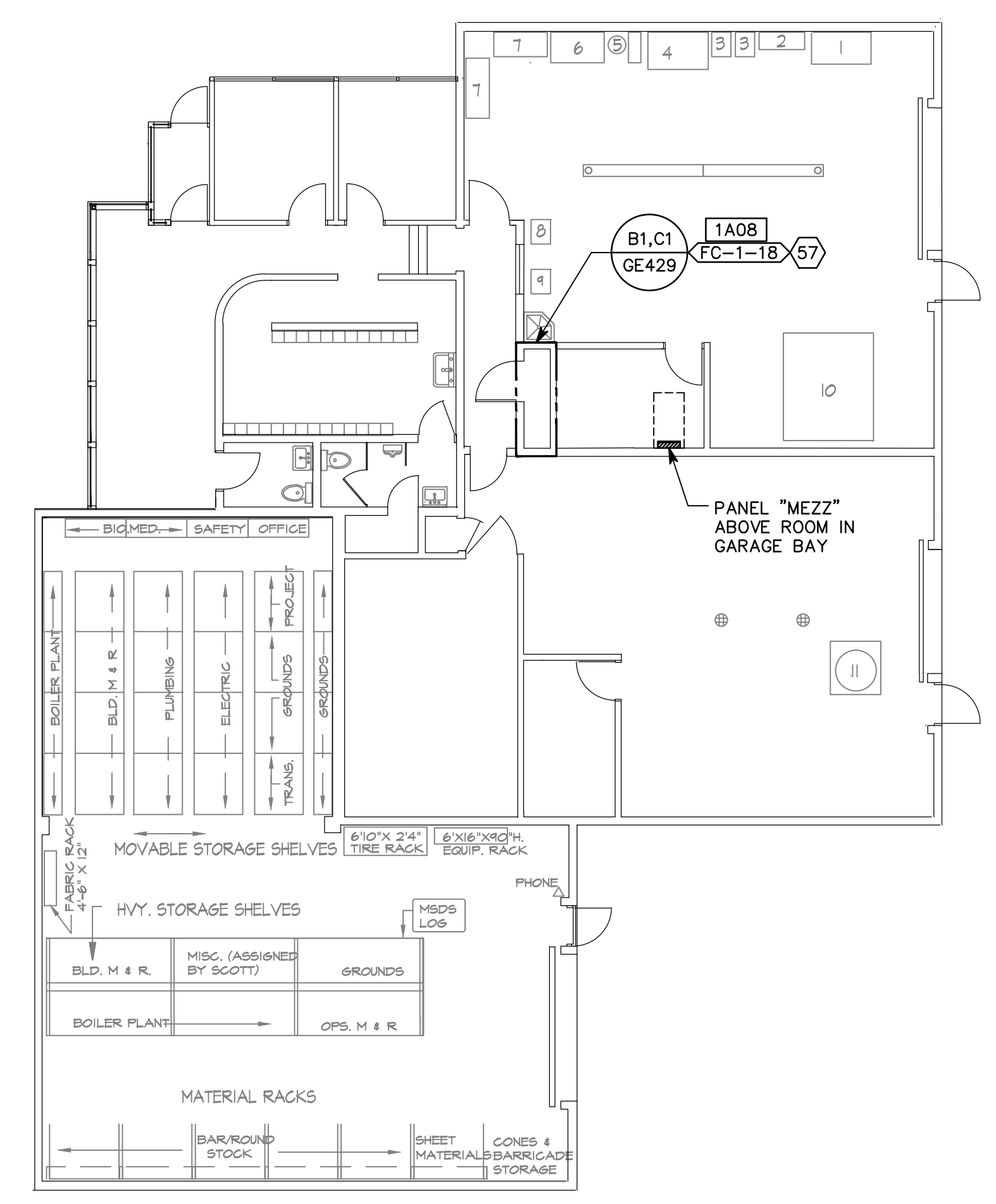
C1 BUILDING 16 LEVEL 01
SCALE: 1" = 20'-0"



C5 BUILDING 16 LEVEL 02
SCALE: 1" = 20'-0"



F1 BUILDING 18
SCALE: 1" = 10'-0"



F5 BUILDING 38
SCALE: 1" = 10'-0"

ROOFING NOTE:
CONTRACTOR SHALL PATCH & REPAIR (E) ROOFING SYSTEM AS NEEDED TO INSTALL NEW MECHANICAL ROOF-TOP UNITS & THROUGH-ROOF PENETRATIONS. SEE DETAILS 6 & 7/GE502 FOR SINGLE PLY ROOFING APPLICATION, AND DETAILS 8 & 9/GE502 FOR BUILT-UP ROOFING APPLICATION.
MAKE ALL MODIFICATIONS & REPAIRS TO (E) ROOFING SYSTEM PER MANUFACTURER'S SPECIFICATIONS.

LEGEND
PROVIDE AND INSTALL 3'-0" WIDE PROTECTIVE WALKWAY AROUND NEW ROOF TOP MECHANICAL UNITS - 80 MIL. PVC, FULLY ADHERE TO (E) SINGLE PLY MEMBRANE ROOFING

CONSULTANTS:		ARCHITECT/ENGINEERS:		Drawing Title REFERENCE FLOOR PLANS		Project Title RENOVATE INFORMATION TECHNOLOGY CLOSETS		Project Number 660-11-113		Office of Construction and Facilities Management 		
				Approved: Project Director		Location VAMC - SLC, UT		Building Number B.16, 18, 38				
Revisions:				 17 Exchange Place, Salt Lake City, UT 84111 office: (801) 463-7103, mobile: (801) 541-7538 fax: (801) 463-7966, www.tsa-usa.com Tracy D. Stocking, AIA tracy@tsa-usa.com		 324 S. State St., Suite 400 Salt Lake City, UT 84111 800-678-7077 801-328-5151 fax: 801-328-5155 www.spectrum-engineers.com		Date OCTOBER 30, 2012			Checked TXH	Drawn PSS