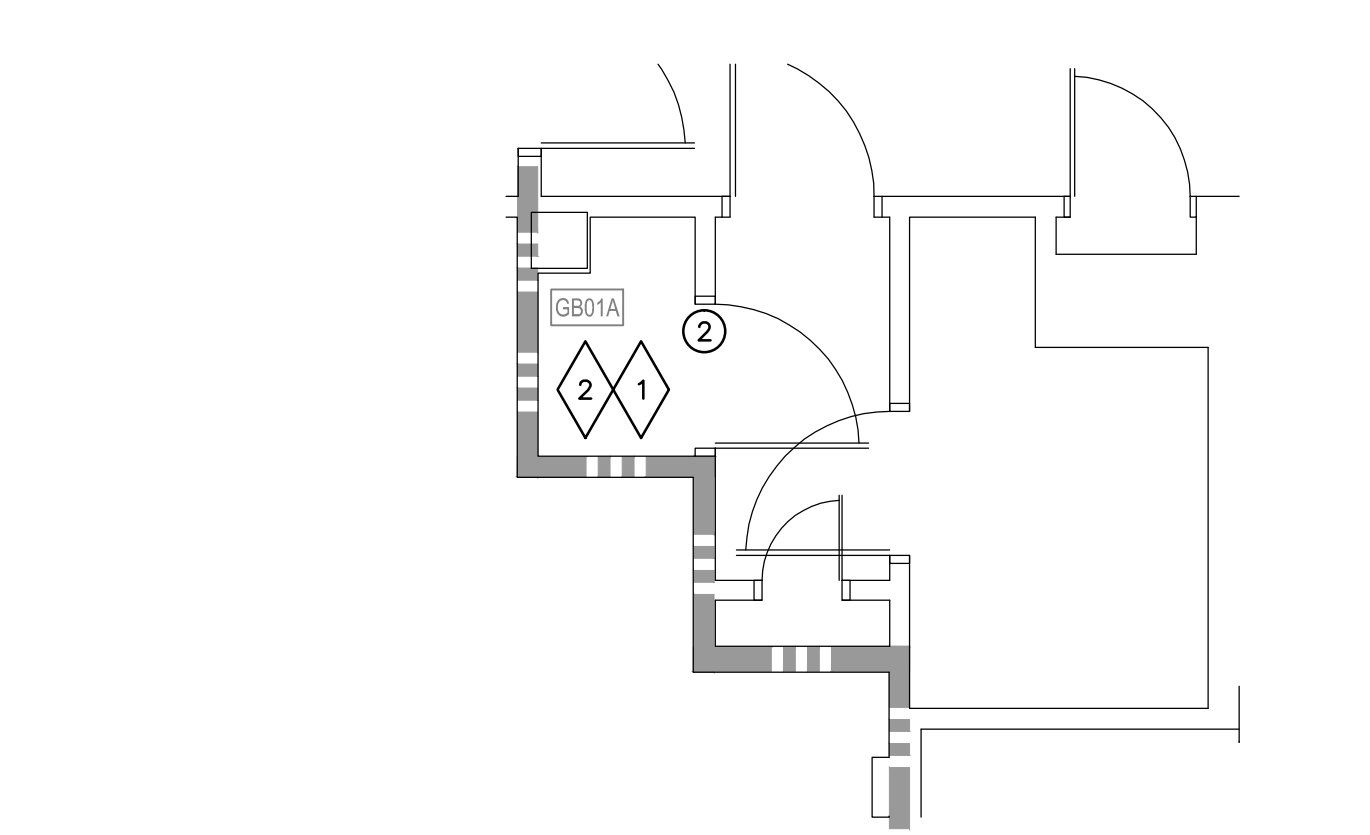
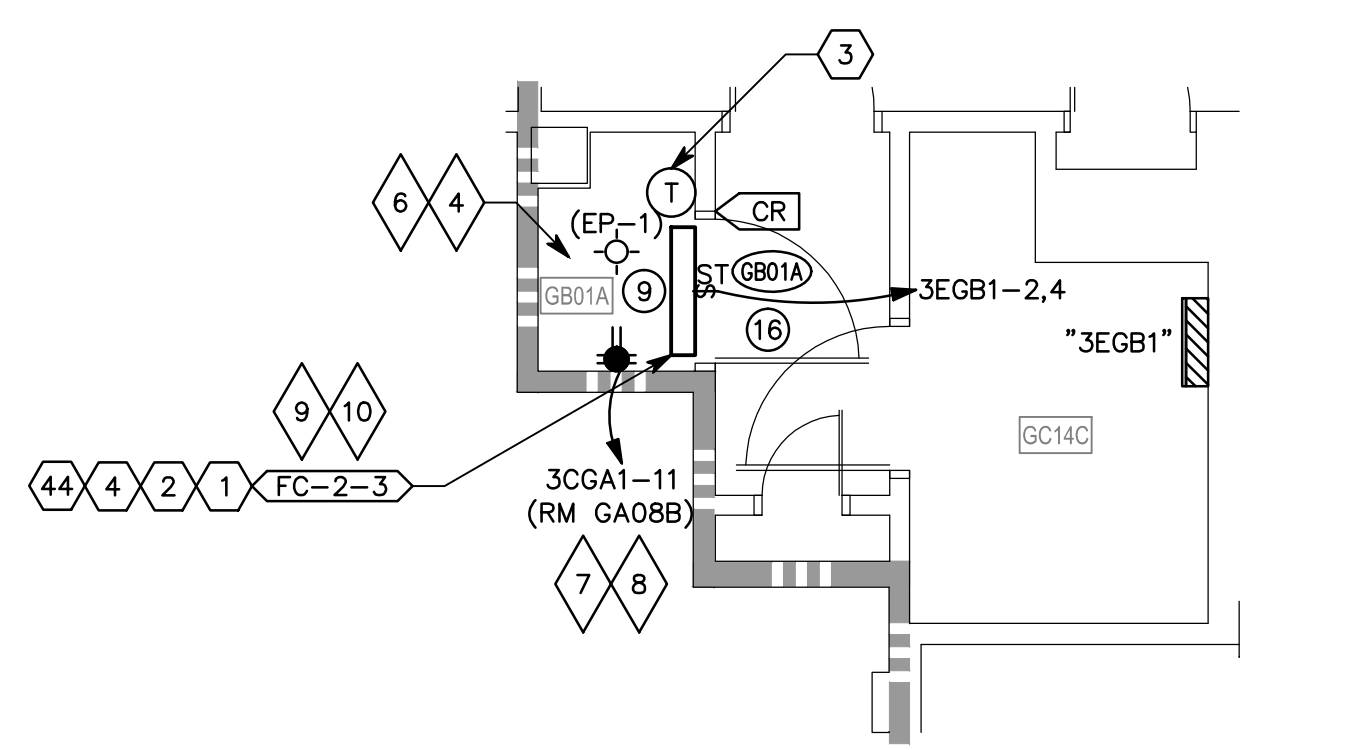


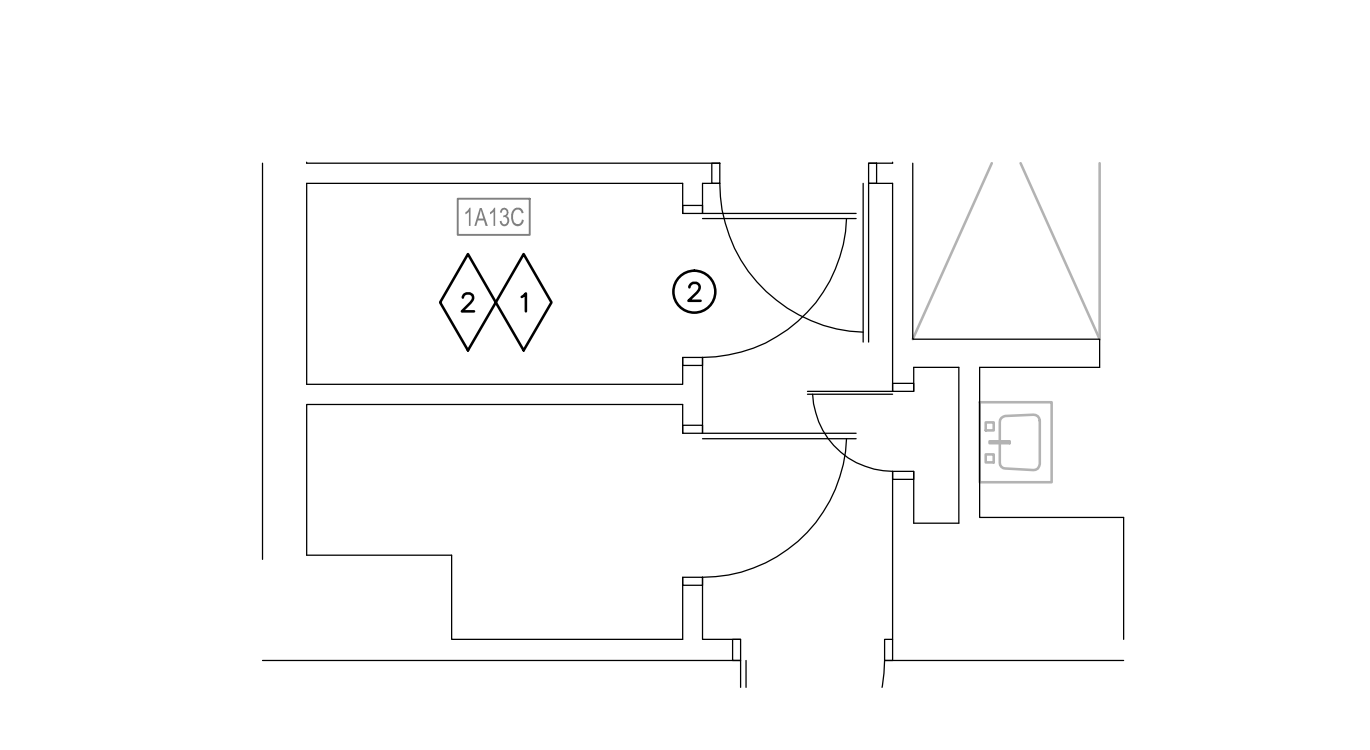
three inches = one foot  
one and one half inches = one foot  
one inch = one foot  
three quarters inch = one foot  
one half inch = one foot  
three eighths inch = one foot  
one quarter inch = one foot  
one eighth inch = one foot



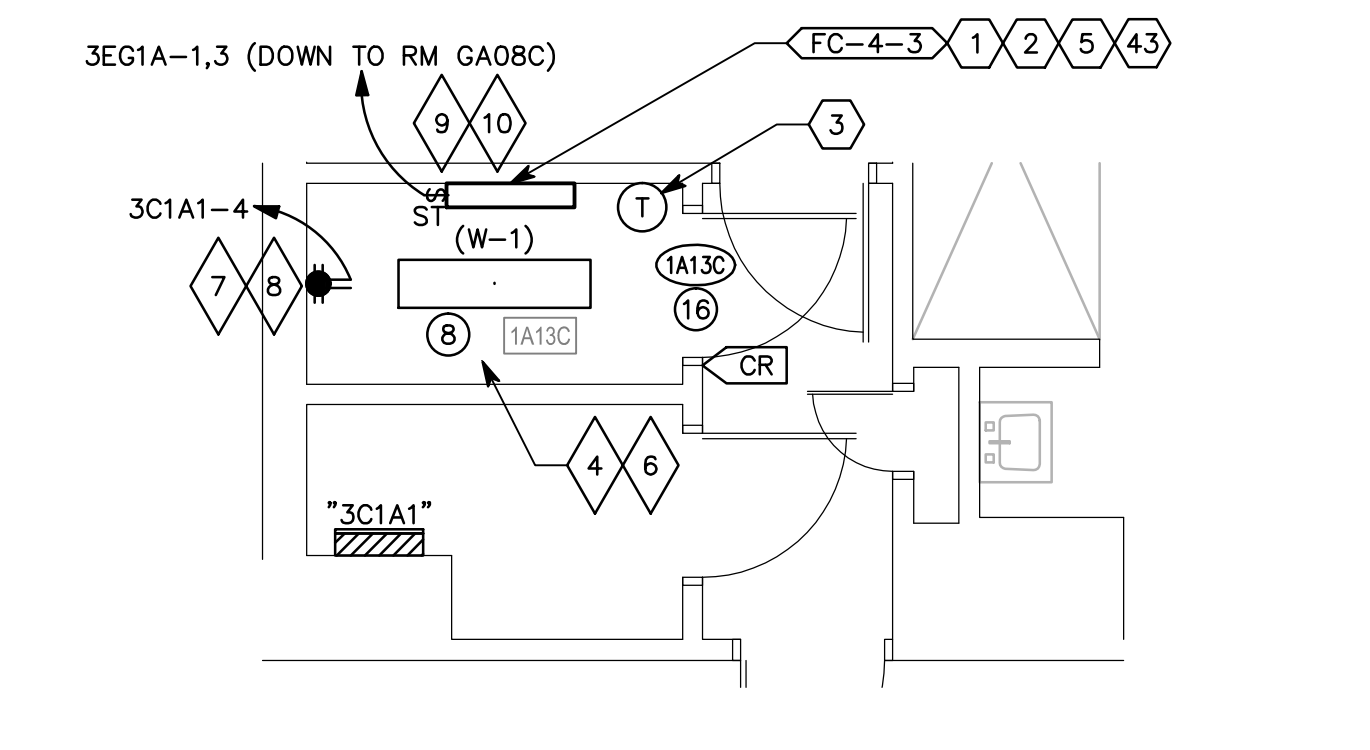
**GB01A-3 EXISTING CONDITIONS & DEMOLITION PLAN**  
SCALE: 1/4"=1'-0"



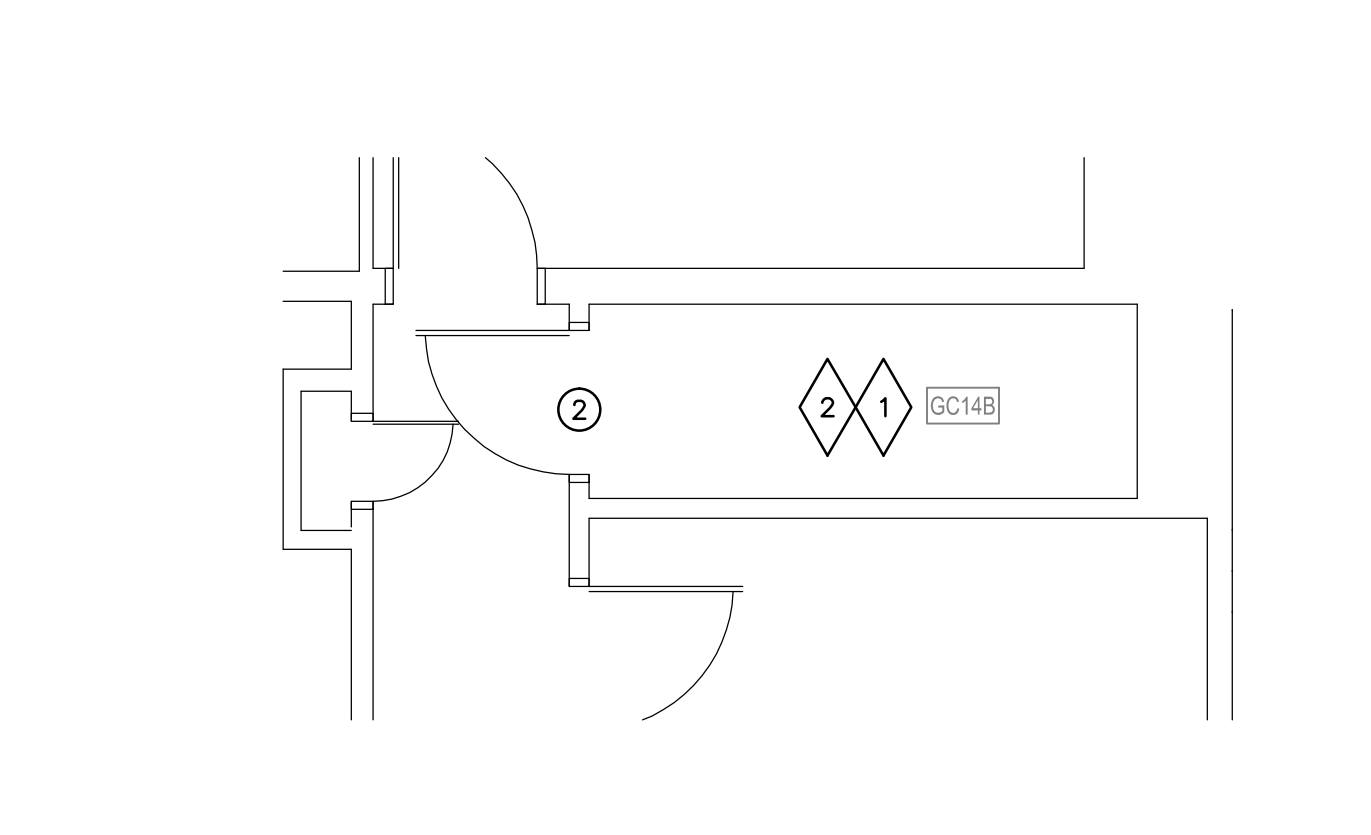
**GB01A-3 RENOVATION & NEW PLAN**  
SCALE: 1/4"=1'-0"



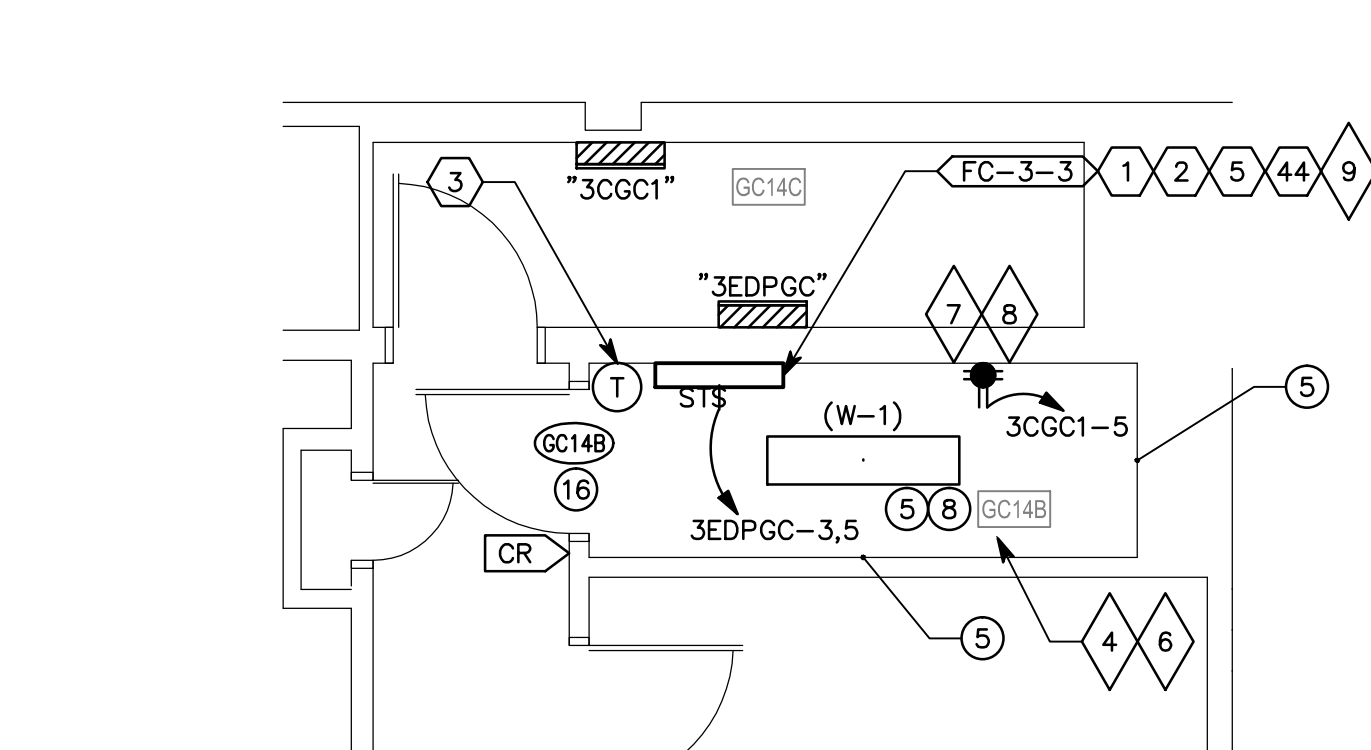
**1A13C-3 EXISTING CONDITIONS & DEMOLITION PLAN**  
SCALE: 1/4"=1'-0"



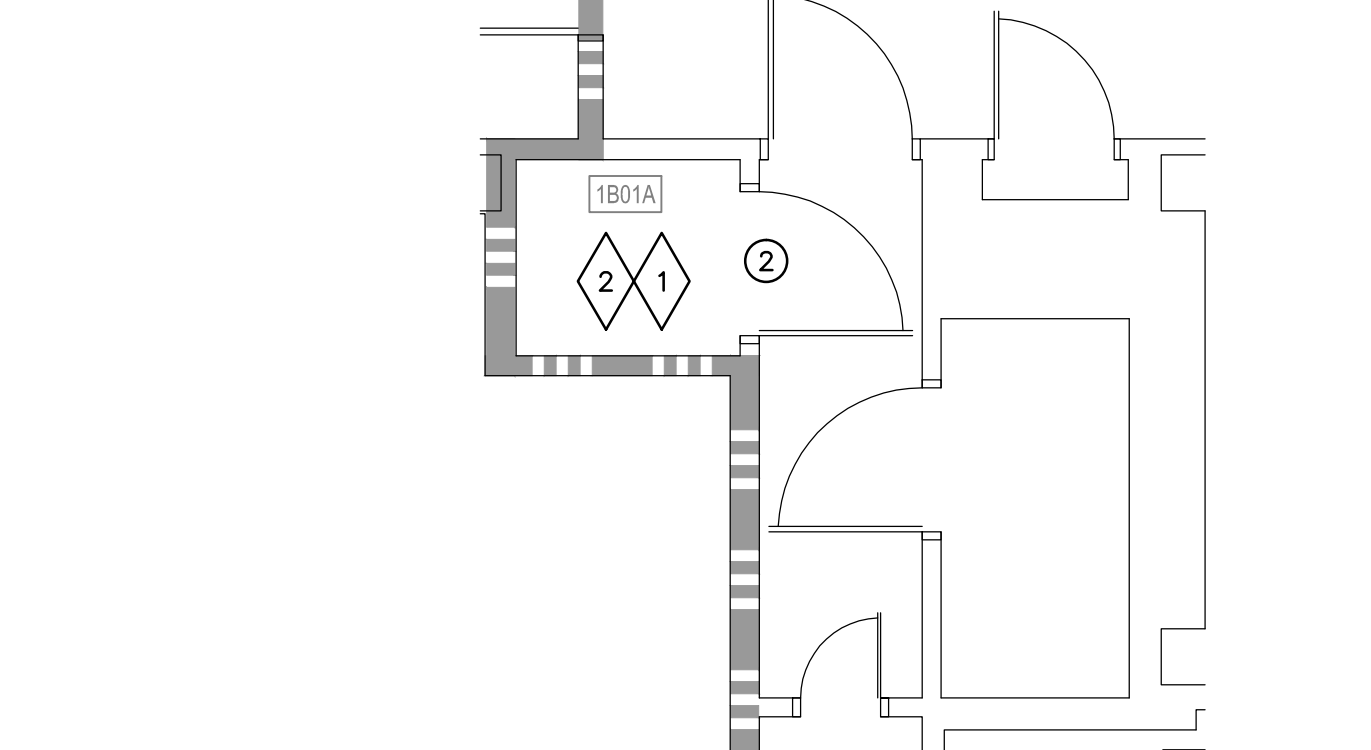
**1A13C-3 RENOVATION & NEW PLAN**  
SCALE: 1/4"=1'-0"



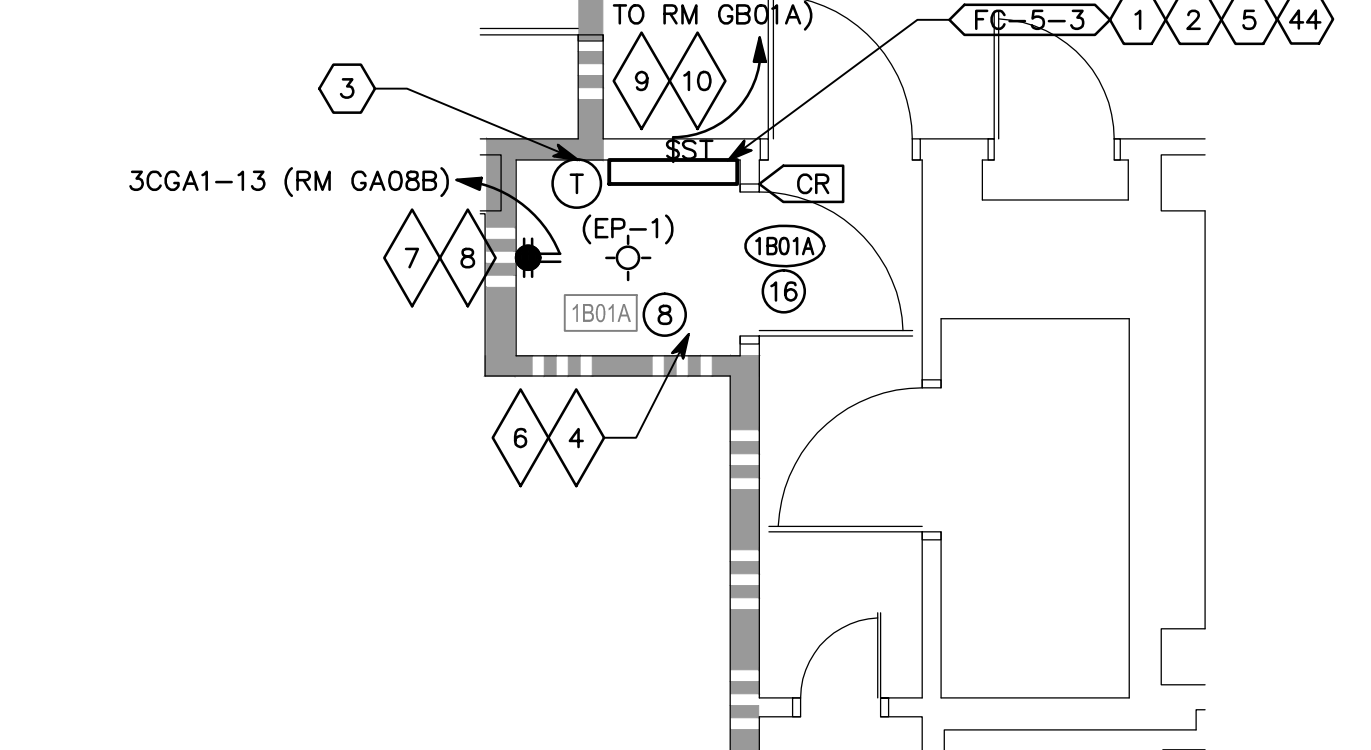
**GC14B-3 EXISTING CONDITIONS & DEMOLITION PLAN**  
SCALE: 1/4"=1'-0"



**GC14B-3 RENOVATION & NEW PLAN**  
SCALE: 1/4"=1'-0"



**1B01A-3 EXISTING CONDITIONS & DEMOLITION PLAN**  
SCALE: 1/4"=1'-0"



**1B01A-3 RENOVATION & NEW PLAN**  
SCALE: 1/4"=1'-0"

A GENERAL KEYNOTING SYSTEM HAS BEEN UTILIZED TO STREAMLINE THE IDENTIFICATION OF THE SCOPE OF WORK. THESE KEYNOTES ARE IDENTICAL ON ALL SHEETS THROUGHOUT THE SET. THE UNIQUE SCOPE OF THE WORK FOR INDIVIDUAL ROOMS IS IDENTIFIED BY THE PLACEMENT OF KEYNOTE NUMBERS ON EACH INDIVIDUAL PLAN.

ARCHITECTURAL KEYNOTES		MECHANICAL KEYNOTES	
1. PATCH & REPAIR HOLE IN (E) GYPSUM BOARD CEILING	35. PATCH & REPAIR (E) EPOXY FLOOR & PROVIDE NEW EPOXY BASE FOR NEW WALL - MATCH EXISTING	1. CONTRACTOR TO ROUTE PUMPED CONDENSATE TO NEAREST SANITARY WASTE LINE OR TAILPIECE OF LAVATORY AND PROVIDE AIR GAP FITTING (WITH ASSOCIATED TRAP AS REQUIRED).	28. ROOF MOUNTED CONDENSING UNIT CU-3 SERVES UNITS: FC-24-1 (RM 4C22B-1), FC-21-1 (RM 3C20B-1), FC-15-1 (RM 2C20B-1), FC-18-1 (RM 2EAC-1), FC-10-1 (RM 1F02-1), FC-5-1 (RM 1C12-1), FC-7-1 (RM 1EAC-1), FC-28-1 (RM GB05-1), FC-29-1 (RM GB08-1), AS SHOWN ON SCHEMATIC LOCATED ON SHEET GE603.
2. (E) DOOR, FRAME & HARDWARE TO REMAIN WITH THE FOLLOWING EXCEPTIONS. REMOVE LOCKSET AND STRIKE AND PREPARE (E) FRAME AND DOOR FOR NEW LOCKSET AND ELECTRIC STRIKE - SEE DOOR SCHEDULE	36. RE-PAINT (E) WALL AS NECESSARY TO NEAREST INSIDE/OUTSIDE CORNER. MATCH (E) WALL COLOR, SHEEN & TEXTURE	2. CONTRACTOR TO ROUTE NEW DX LINESET UP THROUGH EXISTING STRUCTURE TO CONDENSING UNIT ON ROOF. ACTUAL ROUTING WILL NEED TO BE FIELD VERIFIED BY THE CONTRACTOR, AND COORDINATED WITH THE ARCHITECT/ ENGINEER PRIOR TO INSTALLATION.	29. ROOF MOUNTED CONDENSING UNIT CU-2 SERVES UNITS: FC-2-1 (RM 1B05-1), FC-4-1 (RM 1B29-1), FC-11-1 (RM 1G14-1), FC-14-1 (RM 2B09-1), FC-20-1 (RM 3B09-1), FC-25-1 (RM 4D05-1), FC-26-1 (RM 5B13B-1), FC-30-1 (RM GC10B-1), FC-32-1 (RM 4B13-1), AS SHOWN ON SCHEMATIC LOCATED ON SHEET GE603.
3. REMOVE (E) SUSPENDED ACOUSTICAL LAY-IN CEILING SYSTEM COMPLETE	37. (E) DOOR, FRAME & HARDWARE ARE TO REMAIN - PROTECT IN PLACE	3. PROVIDE WALL MOUNTED THERMOSTAT / SENSOR FOR FAN COIL UNIT LOCATED AT 48" ABOVE FINISHED FLOOR LEVEL AND TIE INTO EXISTING BUILDING MANAGEMENT SYSTEM.	30. ROOF MOUNTED CONDENSING UNIT CU-14 SERVES UNITS: FC-1-7 (RM 1A3B-7), AS SHOWN ON SCHEMATIC LOCATED ON SHEET GE605.
4. PROVIDE & INSTALL NEW WALL ANGLE FOR (E) SUSPENDED ACOUSTICAL LAY-IN CEILING SYSTEM	38. NOT USED	4. INSTALL NEW FAN COIL UNIT BETWEEN TOP OF EXISTING DOOR FRAME AND CEILING STRUCTURE.	31. ROOF MOUNTED CONDENSING UNIT CU-15 SERVES UNITS: FC-2-7 (RM 1C10-7), AS SHOWN ON SCHEMATIC LOCATED ON SHEET GE605.
5. EXTEND (E) WALL(S) TO DECK/STRUCTURE ABOVE - SEE DETAIL 3/GE502	39. NOT USED	5. CONTRACTOR TO INSTALL WALL MOUNTED FAN COIL UNIT AT 5'-6" ABOVE FINISH FLOOR TO BOTTOM OF UNIT.	32. ROOF MOUNTED CONDENSING UNIT CU-16 SERVES UNITS: FC-2-8 (RM 2A02A-8), AS SHOWN ON SCHEMATIC LOCATED ON SHEET GE605.
6. ADJUST (E) SPRINKLER HEIGHT AS NECESSARY FOR NEW GYPSUM BOARD CEILING	40. NOT USED	6. CONTRACTOR TO DEMOLISH EXISTING SUPPLY AND EXHAUST DUCTS BACK TO WALL PENETRATION AND CAP DUCTS.	33. CONDENSING UNIT CU-18 MOUNTED ON GRADE SERVES UNITS: FC-1-18 (RM 1A06-18), AS SHOWN ON SCHEMATIC LOCATED ON SHEET GE605.
7. PROVIDE AND INSTALL SUSPENDED GYPSUM BOARD CEILING SYSTEM WITH 5/8" GYPSUM BOARD. HEIGHT TO BE FIELD DETERMINED BASED ON (E) MEP LOCATIONS. PROVIDE AS NECESSARY LOCKABLE ACCESS PANEL - SEE DETAIL COORDINATED LOCATION WITH MEP	41. NOT USED	7. REMOVE EXISTING LIGHT FIXTURE.	34. ROOF MOUNTED CONDENSING UNIT CU-21 SERVES UNITS: FC-1-13 (RM 1A02-13), AS SHOWN ON SCHEMATIC LOCATED ON SHEET GE605.
8. PAINT ALL GYPSUM BOARD WALLS ONLY	42. NOT USED	8. REMOVE EXISTING FLEX DUCT AND SUPPLY DIFFUSER AND CAP DUCT.	35. CONDENSING UNIT CU-19 MOUNTED ON GRADE SERVES UNITS: FC-1-45 (RM GA04-45), AS SHOWN ON SCHEMATIC LOCATED ON SHEET GE605.
9. PAINT ALL GYPSUM BOARD WALLS ONLY AND GYPSUM BOARD CEILING	43. NOT USED	9. CONTRACTOR TO PROVIDE SHEET METAL DRAIN PAN UNDER EXISTING CHILLED WATER PIPES. PROVIDE CONDENSATE SENSOR, PUMP AND PIPING TO NEAREST SANITARY WASTE LINE OR TAIL PIECE OF LAVATORY AND PROVIDE AIR GAP FITTING (WITH ASSOCIATED TRAP AS REQUIRED).	36. CONDENSING UNIT CU-20 MOUNTED ON GRADE SERVES UNITS: FC-1-11 (RM 1A25-11), AS SHOWN ON SCHEMATIC LOCATED ON SHEET GE605.
10. WALL MATERIALS VARY - PAINT ALL WALLS	44. NOT USED	10. PROVIDE WALL MOUNTED SUPPLY AND RETURN GRILL MOUNTED ABOVE DOOR FRAME.	37. ROOF MOUNTED CONDENSING UNIT CU-13 SERVES UNITS: FC-2-5 (RM 1A11-5), AS SHOWN ON SCHEMATIC LOCATED ON SHEET GE605.
11. REMOVE, PROTECT & RE-INSTALL AS NECESSARY (E) SUSPENDED ACOUSTICAL LAY-IN CEILING SYSTEM IN ORDER TO EXTEND (E) WALLS TO DECK/STRUCTURE ABOVE.	45. PROVIDE AND INSTALL NEW 5/8" GYPSUM BOARD WHERE WOOD PANEL WAS REMOVED	11. INSTALL FAN COIL UNIT IN CEILING SPACE SUCH THAT SERVICE CLEARANCE FOR UNIT IS MAINTAINED.	38. FAN COIL UNIT SERVED BY CU-1 AS SHOWN ON MECHANICAL PLAN LOCATED ON SHEET F1/GE102.
12. REMOVE LEFT OVER LATH & PLASTER CEILING SYSTEM COMPLETE	46. NOT USED	12. PROVIDE CEILING MOUNTED SUPPLY AND RETURN GRILLES.	39. FAN COIL UNIT SERVED BY CU-4 AS SHOWN ON MECHANICAL PLAN LOCATED ON SHEET C1/GE104.
13. (E) DOOR AND FRAME ARE TO REMAIN. REMOVE (E) DOOR LATCH SET - ALL OTHER HARDWARE IS TO REMAIN	47. REMOVE (E) CARD READER & REQUEST TO EXIT DEVICES COMPLETE	13. EXISTING LIGHT FIXTURE TO BE RELOCATED TO ALLOW INSTALLATION OF NEW FAN COIL UNIT ABOVE DOOR.	40. FAN COIL UNIT SERVED BY CU-5 AS SHOWN ON MECHANICAL PLAN LOCATED ON SHEET C1/GE104.
14. PROVIDE DOOR HOLE COVER PLATE WITH TAMPER PROOF SCREWS	48. NOT USED	14. CONTRACTOR TO REMOVE FLEX DUCT AND SUPPLY DIFFUSER AND CAP AT SHEET METAL DUCT.	41. FAN COIL UNIT SERVED BY CU-6 AS SHOWN ON MECHANICAL PLAN LOCATED ON SHEET C1/GE105.
15. REMOVE (E) DOOR COMPLETE. (E) FRAME AND HARDWARE ARE TO REMAIN WITH THE FOLLOWING EXCEPTIONS. PREPARE (E) FRAME FOR ELECTRIC STRIKE - SEE DOOR SCHEDULE	49. NOT USED	15. CONTRACTOR TO REMOVE SUPPLY AND RETURN GRILLE AND CAP DUCTWORK.	42. FAN COIL UNIT SERVED BY CU-7 AS SHOWN ON MECHANICAL PLAN LOCATED ON SHEET C1/GE105.
16. PAINT (E) HOLLOW METAL FRAME - MATCH EXISTING COLOR	50. PATCH & REPAIR (E) VCT FLOORING AS NECESSARY	16. CONTRACTOR TO REMOVE / DISCARD EXISTING 2 PIPE FAN COIL UNIT AND CAP HYDRONIC PIPING.	43. FAN COIL UNIT SERVED BY CU-8 AS SHOWN ON MECHANICAL PLAN LOCATED ON SHEET C1/GE106.
17. PATCH AND REPAIR HOLE IN (E) GYPSUM BOARD WALL	51. NOT USED	17. PROVIDE ROOF CURB AND FLASHING FOR PIPES ASSOCIATED WITH NEW CONDENSING UNIT ON ROOF.	44. FAN COIL UNIT SERVED BY CU-10 AS SHOWN ON MECHANICAL PLAN LOCATED ON SHEET C1/GE106.
18. (E) 30"x30" ACCESS PANEL TO REMAIN AND TO BE RE-PAINTED - PROTECT IN PLACE	52. NOT USED	18. PROVIDE WALL MOUNTED SUPPLY AND RETURN GRILLE.	45. FAN COIL UNIT SERVED BY CU-11 AS SHOWN ON MECHANICAL PLAN LOCATED ON SHEET F5/GE106.
19. REMOVE SCREWS TO (E) WALL AIR GRILLE & PROVIDE TAMPER PROOF SCREWS	53. NOT USED	19. REMOVE EXISTING DUCT FROM FAN COIL UNIT TO ROOM 2C20B-1 & 2C20C AND CAP DUCT IN ELECTRICAL ROOM.	46. FAN COIL UNIT SERVED BY CU-3 AS SHOWN ON MECHANICAL PLAN LOCATED ON SHEET F1/GE102.
20. REMOVE UPPER WALL CABINET COMPLETE	54. NOT USED	20. ROOF MOUNTED CONDENSING UNIT CU-1 SERVES UNITS: FC-1-1 (RM 1A19A-1), FC-8-1 (RM 1D18-1), FC-9-1 (RM 1D49-1), FC-13-1 (RM 2A15C-1), FC-17-1 (RM 2D07-1), FC-19-1 (RM 3A15A-1), FC-22-1 (RM 3D07-1), FC-23-1 (RM 4A15D-1), FC-27-1 (RM GA16-1), AS SHOWN ON SCHEMATIC LOCATED ON SHEET GE603.	47. FAN COIL UNIT SERVED BY CU-2 AS SHOWN ON MECHANICAL PLAN LOCATED ON SHEET F1/GE102.
21. PROVIDE AND INSTALL LOCKABLE CEILING MOUNTED ACCESS DOOR TO (E) OPENING. PAINT ACCESS DOOR TO MATCH (E) CEILING PAINT COLOR	55. NOT USED	21. ROOF MOUNTED CONDENSING UNIT CU-4 SERVES UNITS: FC-1-14 (RM BA05-14), FC-3-14 (RM 2B02-14), FC-6-14 (RM 3B03-14), FC-9-14 (RM GB34-14), FC-12-14 (RM 1B01-14), AS SHOWN ON SCHEMATIC LOCATED ON SHEET GE603.	48. FAN COIL UNIT SERVED BY CU-15 AS SHOWN ON MECHANICAL PLAN LOCATED ON SHEET C5/GE108.
22. REMOVE (E) WALL COMPLETE	56. REMOVE (E) HOLLOW METAL FRAME IN SUCH A WAY AS TO NOT DISTURB (E) CMU/CONCRETE WALL	22. ROOF MOUNTED CONDENSING UNIT CU-5 SERVES UNITS: FC-2-14 (RM 2B25-14), FC-4-14 (RM 2B43-14), FC-5-14 (RM 3B01C-14), FC-7-14 (RM BC07-14), FC-10-14 (RM GB51A-14), FC-11-14 (RM GB64-14), AS SHOWN ON SCHEMATIC LOCATED ON SHEET GE604.	49. FAN COIL UNIT SERVED BY CU-16 AS SHOWN ON MECHANICAL PLAN LOCATED ON SHEET F5/GE108.
23. REMOVE MOP SINK & ASSOCIATED PLUMBING COMPLETE - SEE PLUMBING DRAWINGS	57. NOT USED	23. ROOF MOUNTED CONDENSING UNIT CU-6 SERVES UNITS: FC-1-2 (RM G00B-2), FC-2-2 (RM GA28-2), FC-3-2 (RM GB03-2), FC-6-2 (RM 1A3B-2), FC-7-2 (RM 1B09-2), FC-11-2 (RM 2A24-2), FC-12-2 (RM B07-2), AS SHOWN ON SCHEMATIC LOCATED ON SHEET GE604.	50. FAN COIL UNIT SERVED BY CU-18 AS SHOWN ON MECHANICAL PLAN LOCATED ON SHEET F1/GE110.
24. REMOVE UPPER WALL CABINET COMPLETE	58. REMOVE PLASTER AND LATH WALL & CEILING COMPLETE - WHERE SHOWN DASHED	24. ROOF MOUNTED CONDENSING UNIT CU-7 SERVES UNITS: FC-4-2 (RM GC13-2), FC-5-2 (RM GD05-2), FC-8-2 (RM 1C14-2), FC-9-2 (RM 1D09-2), FC-10-2 (RM 1D35-2), AS SHOWN ON SCHEMATIC LOCATED ON SHEET GE604.	51. FAN COIL UNIT SERVED BY CU-21 AS SHOWN ON MECHANICAL PLAN LOCATED ON SHEET F1/GE109.
25. PATCH AND REPAIR WALL & FLOOR AS NECESSARY WHERE MOP SINK, UPPER WALL CABINET, AND ASSOCIATED PLUMBING WAS REMOVED. MATCH (E) FINISHES	59. PROVIDE AND INSTALL NEW METAL STUD WALL WITH GYPSUM BOARD - SEE DETAIL 2/GE502	25. ROOF MOUNTED CONDENSING UNIT CU-8 SERVES UNITS: FC-1-3 (RM GA08C-3), FC-4-3 (RM 1A13C-3), FC-8-3 (RM 2A23C-3), FC-9-3 (RM 2B01A-3), AS SHOWN ON SCHEMATIC LOCATED ON SHEET GE604.	52. FAN COIL UNIT SERVED BY CU-19 AS SHOWN ON MECHANICAL PLAN LOCATED ON SHEET C5/GE111.
26. NEW MOP SINK & FAUCET - SEE PLUMBING DRAWINGS	60. NOT USED	26. ROOF MOUNTED CONDENSING UNIT CU-10 SERVES UNITS: FC-2-3 (RM GB01A-3), FC-3-3 (RM GC14B-3), FC-5-3 (RM 1B01A-3), FC-6-3 (RM 1C18C-3), FC-7-3 (RM 1D01-3), FC-10-3 (RM 2C14B-3), AS SHOWN ON SCHEMATIC LOCATED ON SHEET GE605.	53. FAN COIL UNIT SERVED BY CU-20 AS SHOWN ON MECHANICAL PLAN LOCATED ON SHEET F5/GE111.
27. REMOVE (E) SINK & FAUCET COMPLETE - PROTECT AND SAVE, RETURN BACK TO OWNER. REMOVE ANY ASSOCIATED PLUMBING AS NECESSARY IN PREPARATION FOR NEW MOP SINK & FAUCET. SEE PLUMBING DRAWINGS	61. NOT USED	27. ROOF MOUNTED CONDENSING UNIT CU-11 SERVES UNITS: FC-1-4 (RM BB03A-4), FC-2-4 (RM 1A30A-4), FC-3-4 (RM 1B14-4), FC-4-4 (RM 1C40A-4), AS SHOWN ON SCHEMATIC LOCATED ON SHEET GE605.	54. FAN COIL UNIT SERVED BY CU-13 AS SHOWN ON MECHANICAL PLAN LOCATED ON SHEET F1/GE107.
28. REMOVE A PORTION OF (E) CONCRETE AS NECESSARY IN PREPARATION FOR NEW PLUMBING DRAIN PIPE - SEE PLUMBING DRAWINGS	62. RE-ADHERE (E) RUBBER BASE		55. FAN COIL UNIT SERVED BY CU-14 AS SHOWN ON MECHANICAL PLAN LOCATED ON SHEET C5/GE108.
29. PATCH & REPAIR CONCRETE FLOOR AS NECESSARY WHERE NEW FLOOR DRAIN WAS ADDED	63. PROVIDE & INSTALL MISSING VCT FLOORING & RUBBER BASE - MATCH EXISTING		56. CONDENSING UNIT TO BE INSTALLED ON GRADE.
30. REMOVE (E) DOOR, FRAME & HARDWARE COMPLETE	64. PROVIDE & INSTALL MISSING VCT FLOORING - MATCH EXISTING		57. FAN COIL UNIT SERVED BY CU-22 AS SHOWN ON MECHANICAL PLAN LOCATED ON SHEET C1/GE110.
31. PROVIDE & INSTALL WOOD BASE - COLOR, PROFILE & SIZE TO MATCH EXISTING			58. ROOF MOUNTED CONDENSING UNIT CU-22 SERVES UNITS: FC-1-38 (RM 1A08-38), AS SHOWN ON GE605.
32. (E) DOOR, FRAME & HARDWARE TO REMAIN WITH THE FOLLOWING EXCEPTIONS. REMOVE (E) LOCKSET AND ONE HINGE IN PREPARATION FOR NEW ELECTRIC LOCKSET AND ELECTRIC HINGE. CORE DRILL (E) DOOR FOR WIRE TRANSFERRING FROM HINGE TO LOCKSET - SEE DOOR SCHEDULE			
33. REMOVE (E) DOOR COMPLETE. (E) FRAME & HARDWARE ARE TO REMAIN WITH THE FOLLOWING EXCEPTIONS. PREPARE (E) FRAME FOR NEW ELECTRIC STRIKE. (E) FRAME OCCURS IN A CMU WALL AND MAY BE SOLD GROUDED - SEE DOOR SCHEDULE			
34. PATCH AND REPAIR HOLE - PAINT TO MATCH EXISTING			

**ELECTRICAL KEYNOTES**

- REMOVE EXISTING LIGHT FIXTURE AND EXISTING LIGHT SWITCH. CONDUIT, CONDUCTORS AND JUNCTION BOXES SHALL REMAIN IN-PLACE AND OPERABLE FOR RE-USE. LIGHT FIXTURE AND SWITCH SHALL BE REPLACED AND ALL INTERCONNECTING CIRCUITRY SHALL REMAIN OPERABLE, AS ILLUSTRATED ON NEW WORK DRAWINGS.
- REMOVE EXISTING UPS UNIT. RETURN ALL FUNCTIONAL UPS UNITS TO THE VA. DISPOSE OF ALL NON-FUNCTIONAL UPS UNITS USING PROPER METHODS.
- EXISTING EMERGENCY OUTLET SHALL REMAIN.
- PROVIDE NEW LIGHT FIXTURE PER LIGHT FIXTURE SCHEDULE AS DETAILED. RECONNECT EXISTING CIRCUIT TO POWER NEW LIGHT FIXTURE. PROVIDE AND INSTALL A 20 AMPERE DUAL TECHNOLOGY OCCUPANCY SENSOR/LIGHT SWITCH COMBO TO CONTROL THE LIGHTING.
- PROVIDE LIGHT FIXTURE PER LIGHT FIXTURE SCHEDULE. EXTEND NEW CRITICAL POWER CIRCUIT BEING PULLED IN TO POWER NEW IT OUTLET. PROVIDE A 20 AMPERE DUAL TECHNOLOGY OCCUPANCY SENSOR/LIGHT SWITCH COMBO TO CONTROL THE LIGHTING.
- PROVIDE UPS UNIT, APC-SMT2200RM2U (RACK MOUNTED) OR APC-SMT2200. PROVIDE WALL MOUNTED SHELF FOR UPS UNIT THAT IS A MINIMUM OF 10" BY 24" IN SIZE, AND CAN HOLD A MINIMUM OF 125 LBS. SUBMIT SHELF TO VA AND ENGINEER FOR APPROVAL. INSTALL UPS ON SHELVING UNIT AND SECURE UPS TO SHELF AND WALL. RECONNECT EXISTING IT EQUIPMENT REMOVED/DISCONNECTED IN ITEM KEYNOTE 2.
- PROVIDE A FOUR-PLEX RED RECEPTACLE(S), HOSPITAL GRADE WITH A STAINLESS STEEL ENGRAVED PLATE, FLUSH MOUNTED, WITH CIRCUIT NUMBER AND PANEL DESIGNATION ENGRAVED ON THE NAME PLATE. PATCH EXISTING WALL AS REQUIRED TO ACCOMMODATE NEW INSTALLATION.
- PROVIDE A NEW SQUARE D, SINGLE POLE, 20 AMPERE, NOOB STYLE BOLTED CIRCUIT BREAKER FOR NEW CIRCUIT. GENERATE AND REPRINT NEW COMPUTER GENERATED, TYPEWRITTEN PANEL CIRCUIT DIRECTORY SCHEDULE WITH THE UPDATED CIRCUITRY INFORMATION.
- PROVIDE A NEW SQUARE D, SINGLE POLE, 20 AMPERE, NOOB STYLE BOLTED CIRCUIT BREAKER FOR NEW CIRCUIT. GENERATE AND REPRINT NEW COMPUTER GENERATED, TYPEWRITTEN PANEL CIRCUIT DIRECTORY SCHEDULE WITH THE UPDATED CIRCUITRY INFORMATION.
- PROVIDE A 20 AMP THERMAL SWITCH RATED FOR MECHANICAL EQUIPMENT.
- PROVIDE WATER SENSOR UNDERNEATH RAISED FLOOR. TO BE CONNECTED AND CONTROLLED BY EXISTING BUILDING MANAGEMENT SYSTEM.
- PROVIDE EMERGENCY SHUT OFF SWITCH FOR ALL IT POWER. LOCATE SWITCH IN PLAIN SIGHT BY EXIT. PROVIDE PLASTIC COVER PROTECTOR FOR SHUT OFF SWITCH.
- PROVIDE ADEQUATE DRIP SHIELD OVER ALL IT EQUIPMENT.
- PROVIDE PLASTIC COVER TO PROTECT EM SHUT OFF SWITCH.
- PROVIDE NEW 120/208V 3ø, 100A SQUARE D PANEL WITH 24 SPARE 20 AMP 1 POLE BREAKER. PULL POWER FROM ALGB2. PROVIDE A 100A, 3 POLE BREAKER FOR CIRCUITS 20,22,24. RELOCATE EXISTING AIR HANDLER UNIT DED FROM ALGB2-20,22,24 TO NEW PANEL 4CGB1-2,4,6 USE EXISTING CONDUIT. RE-PULL NEW CONDUCTORS TO MATCH EXISTING AND PROVIDE NEW CIRCUIT BREAKER TO MATCH EXISTING FOR AIR HANDLER UNIT RE-WIRING.
- PROVIDE A NEW SQUARE D, 3 PHASE, 30 AMPERE, NOOB STYLE BOLTED CIRCUIT BREAKER FOR NEW CIRCUIT. GENERATE AND REPRINT NEW COMPUTER GENERATED, TYPEWRITTEN PANEL CIRCUIT DIRECTORY SCHEDULE WITH THE UPDATED CIRCUITRY INFORMATION. PROVIDE A 30A, 3 PHASE, NEMA 3R DISCONNECT AT CU.
- PROVIDE NEW 120/208V 3ø, 100A SQUARE D PANEL WITH 24 SPARE 20A SINGLE POLE BREAKERS. PULL POWER FROM THREE LEAST CRITICAL CIRCUITS THAT YOU CAN RE-FEED FROM YOUR NEW PANEL. COORDINATE WITH LAB PERSONNEL AND COTR. A-PULL NEW CONDUCTORS; CONDUIT AND PROVIDE A NEW CIRCUIT BREAKER TO MATCH EXISTING FOR RE-WIRED CIRCUIT.

<b>CONSULTANTS:</b>		<b>ARCHITECT/ENGINEERS:</b>		Drawing Title <b>ENLARGED IT CLOSET PLANS</b>		Project Title <b>RENOVATE INFORMATION TECHNOLOGY CLOSETS</b>		Project Number <b>660-11-113</b>		Office of Construction and Facilities Management Department of Veterans Affairs		
				Approved: Project Director		Location <b>VAMC - SLC, UT</b>		Building Number <b>B.03</b>				
Revisions:						Date <b>OCTOBER 30, 2012</b>		Checked <b>TXH</b>		Drawn <b>PSS</b>		
Date								Drawing Number <b>GE421</b>		Dwg. 36 of 51		

VA FORM 08-6231

FINAL CONSTRUCTION DOCUMENTS