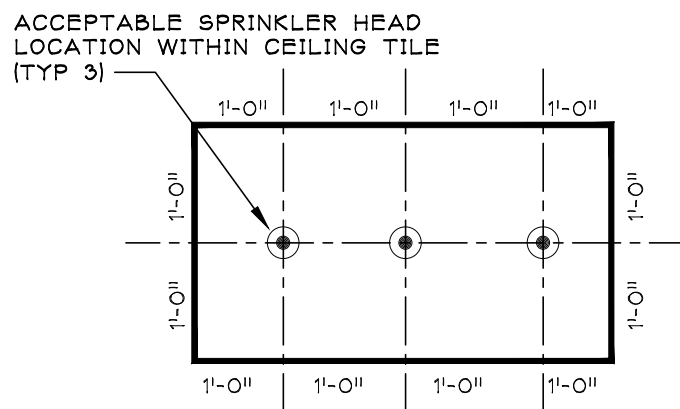


SYMBOL LIST:	
+	EXISTING SEMI-RECESSED SPRINKLER HEAD
⦿	SEMI-RECESSED SPRINKLER HEAD TO BE REMOVED
◆	NEW SEMI-RECESSED QUICK RESPONSE SPRINKLER HEAD
—SPR—	SPRINKLER PIPING MAIN (SPRINKLER) - TO REMAIN
→SPR←	SPRINKLER PIPING DEMOLITION
—○—	PIPE BRANCH UP
—○—	PIPE ELBOW DN
—●—	PIPE RISER
—○—	PIPE BRANCH DN

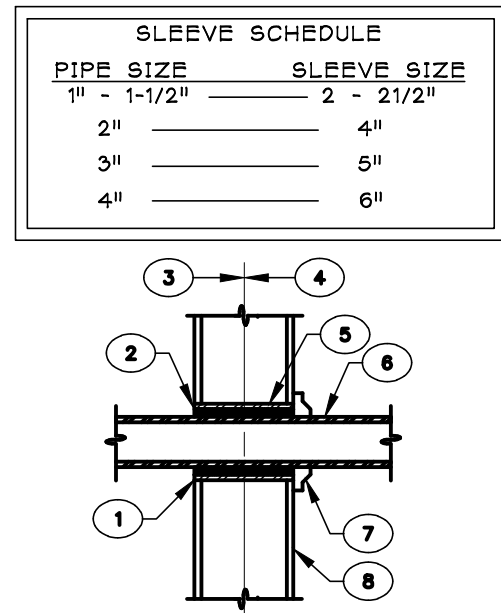
- FIRE PROTECTION PHASING NOTES:**
- AS CEILINGS ARE REMOVED BY OTHER TRADES MODIFY EXISTING PIPING AND PROVIDE UPRIGHT HEADS AND RISER TO MAINTAIN COVERAGE DURING DEMOLITION PHASE OF PROJECT.
  - REMOVE / MODIFY EXISTING SPRINKLER PIPING AND UPRIGHT HEADS TO ACCOMMODATE INSTALLATION OF NEW WORK BY OTHER TRADES.
  - INSTALL NEW SPRINKLER MAINS, PIPING AND HEADS AS WORK OF OTHER TRADES PROGRESS.
  - AT COMPLETION OF PROJECT ALL EXISTING MAINS, PIPING AND HEADS WILL HAVE BEEN REPLACED WITH MINIMUM OF SPRINKLER COVERAGE SHUTDOWN.

- GENERAL FIRE PROTECTION NOTES: (APPLIES TO ALL FIRE PROTECTION DRAWINGS)**
- DRAWINGS ARE DIAGRAMMATIC AND INDICATE GENERAL ARRANGEMENT OF SYSTEMS AND WORK INCLUDED IN THE CONTRACT. IT IS NOT INTENDED TO SPECIFY OR SHOW EVERY OFFSET, FITTING OR COMPONENT; HOWEVER, CONTRACT DOCUMENTS REQUIRE COMPONENTS AND MATERIALS WHETHER OR NOT INDICATED OR SPECIFICALLY SPECIFIED TO MAKE THE SYSTEMS BEING INSTALLED COMPLETE, CODE COMPLIANT, TESTED AND OPERATIONAL.
  - EXISTING FIRE PROTECTION PIPING LOCATION AND ARRANGEMENT IS APPROXIMATE ONLY. CONTRACTOR SHALL FIELD VERIFY ALL LOCATIONS, DIMENSIONS, SIZES AND ELEVATIONS PRIOR TO CONSTRUCTION.
  - CONTRACTOR SHALL ENLIST THE SERVICES OF A QUALIFIED SPRINKLER DESIGN AND INSTALLATION FIRM WITH A MINIMUM OF 10 YEARS EXPERIENCE IN THE FIELD AND A HISTORY OF SUCCESSFUL PROJECTS IN HEALTHCARE FACILITIES. CONTRACTOR SHALL PROVIDE SPRINKLER DRAWINGS DEVELOPED BY A NICET LEVEL-III DESIGNER PRIOR TO CONSTRUCTION. DESIGN SHALL PROVIDE FOR COMPLETE COVERAGE OF THE AREAS INDICATED IN ACCORDANCE WITH NFPA-13. INSTALLATION OF SPRINKLER SYSTEMS AND ALL LOCAL, STATE AND FEDERAL REQUIREMENTS. REFER TO NFPA 241 CONSTRUCTION, ALTERATION AND DEMOLITION OPERATIONS TO MAINTAIN EXISTING SPRINKLER SYSTEM INTACT AS LONG AS FEASIBLE AND NEW SPRINKLER IS INSTALLED AS SOON AS POSSIBLE TO REDUCE THE AMOUNT OF TIME WITHOUT FIRE PROTECTION.
  - ALL MATERIALS, EQUIPMENT, METHODS OF INSTALLATION, REMOVALS AND DISPOSAL SHALL BE IN ACCORDANCE WITH THE STANDARDS, REGULATIONS, CODES, ORDINANCES, AND LAWS OF LOCAL, STATE AND FEDERAL GOVERNMENTS AND OTHER AUTHORITIES THAT HAVE LAWFUL JURISDICTION.
  - PERFORM WORK, PROVIDE MATERIALS AND EQUIPMENT FOR SYSTEMS SHOWN, SPECIFIED AND DESCRIBED ON DRAWINGS. COMPLETELY COORDINATE WITH ALL TRADES OF THIS CONTRACT AND PROVIDE COMPLETE AND FULLY FUNCTIONAL INSTALLATION.
  - PROTECT ALL EXISTING AND NEW BUILDING ELEMENTS FROM DAMAGE. CONTRACTOR SHALL RESTORE ALL DAMAGED ELEMENTS TO ORIGINAL OR BETTER CONDITION.
  - WORK SHALL BE EXECUTED IN A WORKMANLIKE MANNER AND SHALL PRESENT NEAT, RECTILINEAR APPEARANCE WHEN COMPLETED. MAINTAIN MAXIMUM HEAD ROOM AT ALL TIMES. DO NOT RUN PIPES, EXPOSED UNLESS SHOWN AND NOTED TO BE EXPOSED ON DRAWINGS.
  - MATERIALS AND EQUIPMENT SHALL BE NEW AND INSTALLED ACCORDING TO MANUFACTURER'S INSTRUCTIONS AND RECOMMENDATIONS. MAINTAIN MANUFACTURER'S EQUIPMENT CLEARANCES, UNLESS NOTED OTHERWISE.
  - CONTRACTOR IS RESPONSIBLE FOR ALL WORK RELATED TO ISOLATING, SHUTTING DOWN, DRAINING, FILLING AND TESTING SYSTEMS TO ALLOW FOR COMPLETION OF WORK. INTERRUPTIONS TO EXISTING SERVICES AND SYSTEMS SHALL BE AS SHORT AS POSSIBLE AND AT A TIME AND DURATION APPROVED BY THE COR AS APPLICABLE. INCLUDE ALL PREMIUM TIME ASSOCIATED WITH INTERRUPTIONS. ALL SYSTEM INTERRUPTIONS SHALL BE SCHEDULED WITH COR AND COORDINATED WITH OTHER TRADE WORK.
  - ALL EQUIPMENT PIPING, WIRING, INSULATION ETC. INSTALLED IN HVAC AIR PLENUM SPACES SHALL MEET CODE REQUIREMENTS FOR SMOKE AND COMBUSTIBILITY.
  - SEAL ALL PENETRATIONS THROUGH FIRE RATED WALLS, PARTITIONS AND FLOORS WITH UL RATED MATERIALS/METHODS EQUIVALENT TO FIRE RATINGS OF ASSEMBLY.
  - PROVIDE PROPER ACCESS TO EQUIPMENT THAT REQUIRES INSPECTION, REPLACEMENT OR REPAIR. ACCESS PANELS/DOORS SHALL BE A MINIMUM OF 12"x12", UNLESS OTHERWISE NOTED.
  - EXISTING SPRINKLER HEADS TO REMAIN IN ADJACENT AREAS UNLESS NOTED OTHERWISE.
  - ALL BRANCH PIPING SHALL BE LOCATED HIGH ENOUGH ABOVE CEILING TO ALLOW ALL OTHER DEVICES IN CEILING TO FIT WITHOUT OBSTRUCTION.
  - DO NOT HANG SPRINKLER OR OTHER FIRE PROTECTION SYSTEM DEVICES, CONDUITS, PIPING, ETC. FROM ANY SUSPENDED CEILING OR SUSPENDED SYSTEM OR SUPPORTS. ALL FIRE PROTECTION RELATED ITEMS SHALL BE SECURED TO THE BUILDING FLOORS/CEILINGS OR EQUIVALENT MEMBER.
  - ANY SPRINKLER ZONES BEING MODIFIED MUST BE LEFT IN AN ACTIVE AND OPERATIONAL CONDITION AT THE END OF EACH WORK DAY.



## HEAD LOCATION DETAIL

SCALE: NONE

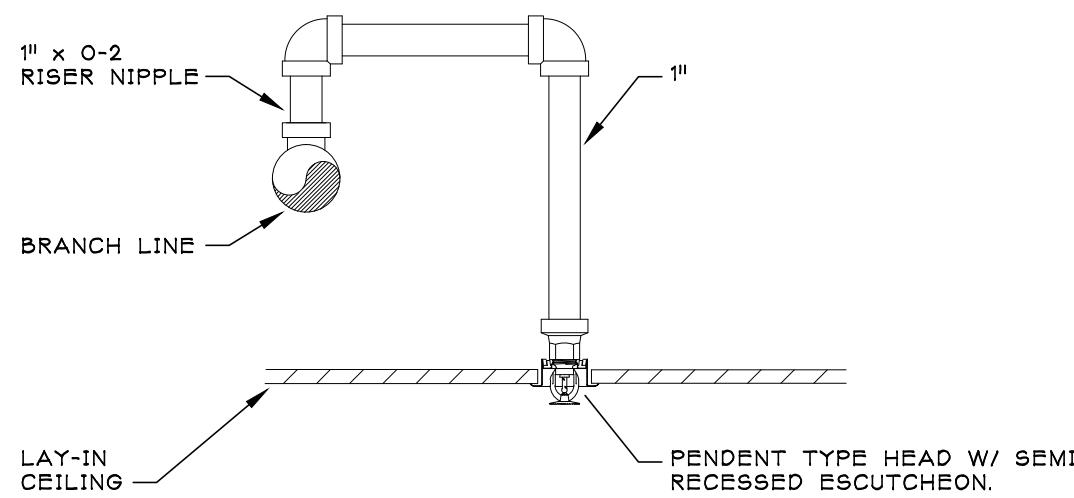


- KEYED NOTES:**
- SEAL PENETRATIONS THROUGH FIRE WALLS WITH UL OR FM LISTED FIRESTOPPING ASSEMBLY.
  - TERMINATE SLEEVE FLUSH WITH FINISHED WALL SURFACE.
  - CONCEALED PIPING
  - PIPING EXPOSED TO VIEW
  - PIPE SLEEVE
  - CENTER PIPE IN SLEEVE; DO NOT USE SLEEVE TO SUPPORT PIPE.
  - ESCUTCHEON PLATE TIGHT TO WALL AND SIZED TO COMPLETELY COVER OPENING
  - FINISHED WALL SURFACE

- GENERAL NOTE:**
- SLEEVES NOT REQUIRED WHERE PENETRATIONS ARE CORE-DRILLED THROUGH MASONRY WALLS/FLOORS. VERIFY REQUIREMENTS WITH APPLICABLE UL FIRESTOP DETAIL.

## INTERIOR WALL SLEEVE DETAIL

SCALE: 3/8" = 1'-0"



## ARM-OVER TAKE-OFF DETAIL

SCALE: NONE

Revisions	Date

**IPD: Engineering**  
INTEGRATED PROJECT DELIVERY

ONE WEBSTER'S LANDING  
SYRACUSE, NEW YORK 13202  
315.423.0185



**Schopfer Architects LLP**

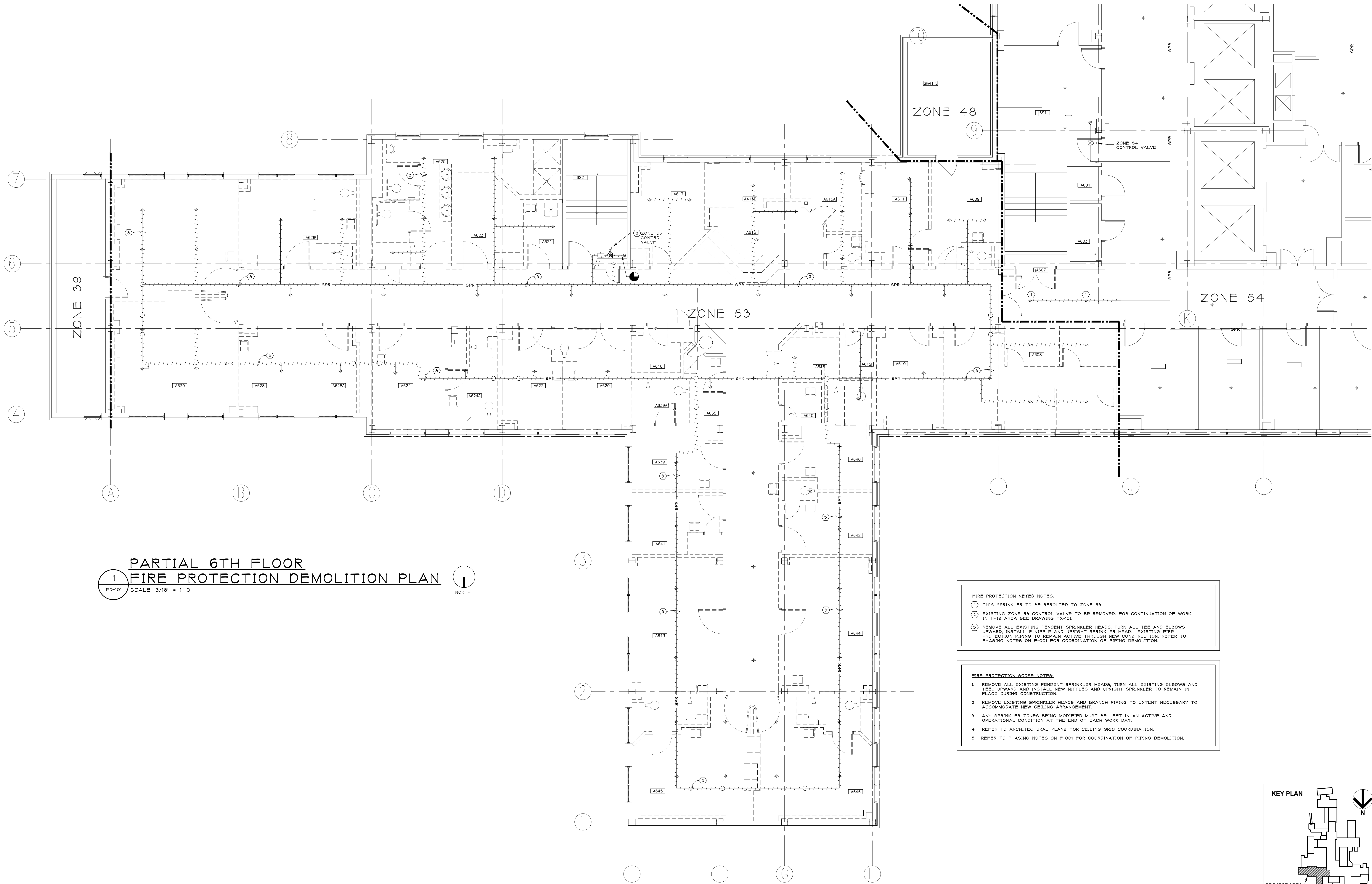
1111 JAMES ST.  
SYRACUSE, NY 13203

315-474-6501  
FAX 315-474-1922

Drawing Title
SYMBOL LIST, GENERAL NOTES AND SCHEDULE

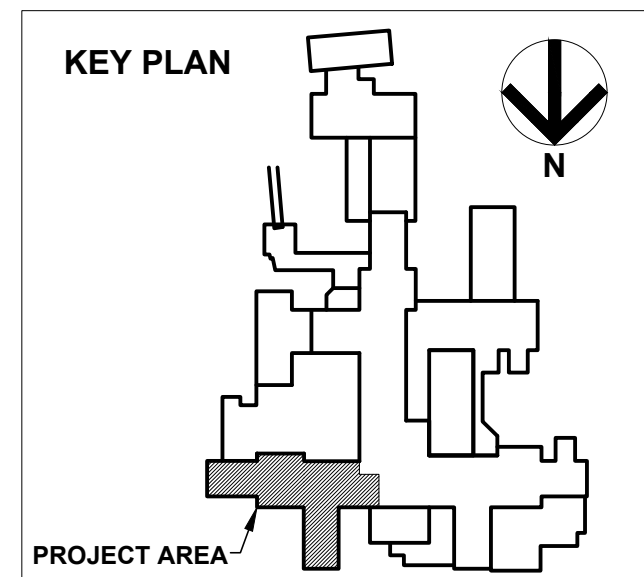
Project Title
RENOVATE 6 EAST FOR ICU
Building Number
BUILDING #1
Location
SYRACUSE, NY
Date
01/15/13
Project No.
VA 528A7-12-702
Drawing No.
F-001
Dwg. 22 of 56





1 PARTIAL 6TH FLOOR  
FIRE PROTECTION DEMOLITION PLAN  
FD-101 SCALE: 3/16" = 1'-0" NORTH

- FIRE PROTECTION KEYED NOTES:**
- ① THIS SPRINKLER TO BE REROUTED TO ZONE 53.
  - ② EXISTING ZONE 53 CONTROL VALVE TO BE REMOVED FOR CONTINUATION OF WORK IN THIS AREA SEE DRAWING PX-101.
  - ③ REMOVE ALL EXISTING PENDENT SPRINKLER HEADS, TURN ALL TEE AND ELBOWS UPWARD, INSTALL 1/2" NIPPLE AND UPRIGHT SPRINKLER HEAD. EXISTING FIRE PROTECTION PIPING TO REMAIN ACTIVE THROUGH NEW CONSTRUCTION. REFER TO PHASING NOTES ON P-001 FOR COORDINATION OF PIPING DEMOLITION.
- FIRE PROTECTION SCOPE NOTES:**
- 1. REMOVE ALL EXISTING PENDENT SPRINKLER HEADS, TURN ALL EXISTING ELBOWS AND TEES UPWARD AND INSTALL NEW NIPPLES AND UPRIGHT SPRINKLER TO REMAIN IN PLACE DURING CONSTRUCTION.
  - 2. REMOVE EXISTING SPRINKLER HEADS AND BRANCH PIPING TO EXTENT NECESSARY TO ACCOMMODATE NEW CEILING ARRANGEMENT.
  - 3. ANY SPRINKLER ZONES BEING MODIFIED MUST BE LEFT IN AN ACTIVE AND OPERATIONAL CONDITION AT THE END OF EACH WORK DAY.
  - 4. REFER TO ARCHITECTURAL PLANS FOR CEILING GRID COORDINATION.
  - 5. REFER TO PHASING NOTES ON P-001 FOR COORDINATION OF PIPING DEMOLITION.



Revisions	Date

**IPD: Engineering**  
INTEGRATED PROJECT DELIVERY  
ONE WEBSTER'S LANDING  
SYRACUSE, NEW YORK 13202  
315.423.0185

**Schopfer Architects LLP**  
1111 JAMES ST.  
SYRACUSE, NY 13203  
315-474-6501  
FAX 315-474-1922

Drawing Title <b>PARTIAL 6TH FLOOR FIRE PROTECTION DEMOLITION PLAN</b>		Project Title <b>RENOVATE 6 EAST FOR ICU</b>		Date 01/15/13	
Building Number <b>BUILDING #1</b>		Checked SBG		Project No. VA 528A7-12-702	
Location SYRACUSE, NY		Drawn NCB		DRAWING NO. <b>FD-101</b>	
				Dwg. 23 of 56	

**VA HEALTHCARE NETWORK**  
UPSTATE NEW YORK  
Department of Veterans Affairs

