

BUILDING SIZE: (2) 11'-9" X 56'-0"  
SQUARE FOOTAGE: 1316 SQFT  
BUILDING SETBACK: GREATER THAN 10' TO COMMON LINE OR PROPERTY LINE  
OCCUPANCY/USE GROUP: B-BUSINESS  
OCCUPANT LOAD: (14)  
TYPE OF CONSTRUCTION: V-B COMBUSTIBLE UNPROTECTED  
BUILDING LOCATION: BUCKS COUNTY, PENNSYLVANIA

FRAME: (2) 11'-9" X 56'-0" OUTRIGGER  
STEEL: M12x10.8 MAIN BEAM W/13GA CROSSMEMBERS @ 48" O.C.  
AXLES: (3) 6,000LB UNDERSLUNG AXLES W/ELECTRIC BRAKES  
HITCH: BOLT ON REMOVABLE BALL HITCH  
TIRES: (12) 8:00 X 14.5, 14PLY STANDARD TIRES  
BARRIER: 1 MIL CROSS-WOVEN POLYPROPYLENE FABRIC UNDERSIDING  
JOISTS: 2X8 SPF#2 OF BETTER TRANSVERSE @ 12" O.C. SPACING  
INSULATION: R-21 UN-FACED F/G  
DECKING: (1) LAYER 3/4" T&G OSB ADVANTECH UNDERLAYMENT, 24" O.C SPAN  
FINISH: 1/8" VINYL TILE "1327" OR 200Z COMMERCIAL CARPET "COLOR" PER SHEET 'A-1'

STUDS: 2X4 #2 SPF OR BETTER @ 16" O.C. SPACING, 9'-2 1/4" HIGH  
PLATES: SINGLE TOP PLATE & SINGLE BOTTOM PLATE  
INSULATION: R-15 KRAFT-FACED F/G BATTS  
FINISH: 1/2" VINYL COVERED GYPSUM "LOOMA BEIGE" INT FINISH TO BE CLASS  
"C" OR BETTER, MINIMUM FLAME SPREAD - 200 OR LESS

STUDS: 2X4 #2 SPF OR BETTER @ 16" O.C. SPACING, 8'-0" HIGH  
PLATES: SINGLE TOP PLATE & SINGLE BOTTOM PLATE  
INSULATION: NONE  
FINISH: 1/2" VINYL COVERED GYPSUM "LOOMA BEIGE" INT FINISH TO BE CLASS  
"C" OR BETTER, MINIMUM FLAME SPREAD - 200 OR LESS

COVE BASE: VINYL COVERED BATTENS EXCEPT 6" VINYL COVE BASE IN BATHROOM  
"PUTTY"  
CORNERS: VINYL COVERED BATTENS  
CEILING: GRID WALL ANGLE  
WINDOWS: NONE  
WIND DOORS: PRE-FINISHED WOODGRAIN JAMB & CASING

SHEATHING: 7/16" OSB W/VAPOR BARRIER HOUSEWRAP  
 SIDING: 26GA HIGH RIB STEEL SIDING "LIGHT STONE"  
 MANSARD: NONE  
 TRIM: 26GA HIGH RIB STEEL TRIM @ TOP, BOTTOM & CORNERS "LIGHT STONE"  
 SKIRTING: NONE

MATEBEAM: (1) LAYER 1-1/2" X 20", 2.0 LVL PER SHEET 'A1'  
 RAFTERS: 2X8 #2 SPF OR BETTER ROOF RAFTERS @ 16" O.C. SPACING  
 SHEATHING: 7/16" OSB W/1/4" DENS DECK SHEATHING  
 CEILING: 2X4 ACOUSTIC SUSPENDED CEILING  
 INSULATION: R-30 UN-FACED F/G  
 ROOFING: .045 EPDM RUBBER "BLACK"  
 MANSARD: NONE  
 EXHAUST: NONE  
 GUTTER: ALUMINUM J-RAIL ALONG LENGTH BOTH SIDES & BULLNOSE ON END

FLOOR (LIVE): 50 P.S.F.  
FLOOR (DEAD): 10 P.S.F.  
CORRIDOR/FILE AREA: 100 P.S.F.  
ROOF (LIVE): 30 P.S.F.  
ROOF (SNOW): 40 P.S.F.  
ROOF (DEAD): 10 P.S.F.  
MAX. WIND LOAD: 100 M.P.H. @ EXPOSURE 'C'  
SEISMIC ZONE: SDS = .49 (SEISMIC DESIGN CATEGORY 'C')  
SD1 = .19 SITE CLASS = D

SIZE/QNTY: (8) 4/0 X 4/0  
TYPE: "WHITE" VINYL HORIZONTAL SLIDER, SILVERLINE #2950  
GLAZING: DOUBLE INSULATED "CLEAR" LOW-E ARGON FILLED GLASS  
BLINDS: 1" "WHITE" HORIZONTAL VINYL MINI

SIZE/QTY: (1) 6/0 X 6/8  
TYPE: 18GA COMMERCIAL STEEL EXTERIOR DOOR W/16GA STEEL FRAME  
& 5" X 20" "CLEAR" VISION PANEL (UP 43" TO BOTTOM)  
SIZE/QTY: (1) 3/0 X 6/8  
TYPE: PRE-HUNG 20GA COMMERCIAL STEEL DOOR W/18GA STEEL FRAME  
& 5" X 20" "CLEAR: VISION PANEL  
HARDWARE: SEE SHEET 'A1' FOR LIST OF HARDWARE

INT. DOORS: (5) 3/0 X 6/8 HOLLOW CORE PRE-FINISHED WOOD GRAIN  
W/PRE-FINISHED WOODGRAIN JAMB & CASING  
HARDWARE: SEE SHEET 'A1' FOR LIST OF HARDWARE

SERVICE: 120/240V SINGLE PHASE, 3 WIRE  
PANELS: (2) 100A MAIN BREAKER W/ENT SERVICE ENTRANCE  
RACEWAY: ROMEX CABLE/MC CABLE (PER NEC)  
LIGHTS: (8) THREE-TUBE GRID MOUNTED FLUORESCENT FIXTURES W/T-8 LAMPS & SINGLE ELECTRONIC BALLAST #P4D24-332G-MA36-S-3EU  
(2) U-TUBE GRID MOUNTED FLUORESCENT FIXTURE W/T-8 LAMPS & SINGLE ELECTRONIC BALLAST #P4D22-232U6G-MA33-S-S-3EU  
(1) TWO-TUBE WALL MOUNTED FLUORESCENT FIXTURE W/T-8 LAMPS & SINGLE ELECTRONIC BALLAST #P414-232G-MA16-S-EU  
(2) UNDER CABINET SINGLE TUBE FLUORESCENT LIGHT #UC24-120-EU  
(1) 26W RECESSED LIGHT  
(QUANTITY IS DETERMINED BY 1.0 WATTS/SQ. FT)

EXT LIGHTS: (2) 13W FLUORESCENT EXTERIOR LIGHT (825 LUMENS) W/BATTERY  
BACKUP EMERGENCY FEATURE @ EVERY EXTERIOR DOOR  
(PHOTO-CELL CONTROLLED)

(3) 120V/15 AMP QUAD "WHITE"  
(3) 120V/15 AMP DUPLEX GFI "WHITE"  
(3) 120V/15 AMP GFI "WHITE" W/IN USE WATERPROOF COVER  
(1) 120V/15 AMP UNDER FLOOR HEAT TAPE RECEPTACLE

SWITCHES: "WHITE" 120V/15 AMP PER SHEET 'E1'  
(5) WALL MOUNTED OCCUPANCY SENSOR WSP200W

EXIT/EMER: (1) CEILING MOUNTED OCCUPANCY SENSOR DR-355  
(2) WALL/CEILING MOUNTED EXIT/EMERGENCY LIGHTS W/BATTERY  
BACKUP SURLITE #AP70RWHDDH

VOICE/DATA: (6) LOCATIONS W/SINGLE GANG BOXES AND FLEXIBLE CONDUIT TO ABOVE CEILING FOR EQUIPMENT TO BE INSTALLED ON SITE BY OTHERS

FIRE ALARM: (3) LOCATIONS W/SINGLE GANG BOXES AND EMT CONDUIT TO ABOVE CEILING FOR EQUIPMENT TO BE INSTALLED ON SITE BY OTHERS (NO COVER PLATES SUPPLIED)

THIS DRAWING HAS BEEN PREPARED FOR THE EXPRESS PURPOSE OF OUTLINING AND SPECIFYING THE DESIGN REQUIREMENTS OF OUR SUBSEQUENT PROPOSAL. THIS DRAWING MAY NOT BE REPRODUCED WITHOUT THE EXPRESS WRITTEN CONSENT OF MOBILE MODULAR EXPRESS, INC.

PENNSYLVANIA  
2006 INTERNATIONAL BUILDING CODE  
2005 NATIONAL ELECTRICAL CODE  
2006 INTERNATIONAL ENERGY CONSERVATION CODE  
2006 INTERNATIONAL FIRE CODE  
2006 INTERNATIONAL MECHANICAL CODE  
2006 INTERNATIONAL PLUMBING CODE  
2003 ICC/ANSI A117.1 ACCESSIBILITY CODE W/AMENDMENTS

EQUIPMENT: (2) 36,000 BTU (3 TON) WALL MOUNTED CENTRAL HVAC UNIT  
W/10KW ELECTRIC HEAT STRIPS  
SUPPLY: F/G IN CEILING W/24" X 24" ADJUSTABLE DIFFUSERS  
RETURN: F/G IN CEILING W/24" X 24" GRILLES  
EXHAUST: (1) 150CFM EXHAUST FAN IN BATHROOM  
THERM: (2) 7-DAY WALL MOUNTED PROGRAMMABLE HEAT/COOL

SUPPLY: CPVC PIPE & FITTINGS  
WASTE SCHEDULE 40 PVC PIPE & FITTINGS  
HEATER: (1) 6-GALLON TANK TYPE WATER HEATER W/PLASTIC WATER HEATER PAN  
& TEMPERING VALVE  
LABATORY: (1) WALL HUNG CHINA W/SINGLE LEVER FAUCET  
SINK: (1) 25" X 23" DOUBLE BOWL KITCHEN SINK W/8" SWIVEL FAUCET  
TOILETS: (1) HANDICAPPED BOWL TANK TYPE W/OPEN FRONT SEAT  
ACCESS.: (1) TOILET PAPER HOLDER  
(1) 18" X 30" UN-FRAMED MIRROR  
(1) 18" SST VERTICAL HANDICAPPED GRAB BAR, BOBRICK #B1608-18  
(1) 36" SST HANDICAPPED GRAB BAR, BOBRICK #B1608-36  
(1) 42" SST HANDICAPPED GRAB BAR, BOBRICK #B1608-42

LAMINATE: (15'-0") 25" DEEP POST FORMED LAMINATE W/4" HIGH BACKSPLASH  
"4762-60 MYSTIQUE DAWN"

CABINETS: LIGHT MEDIUM OAK

- (1) B48 BASE CABINET
- (1) B36 BASE CABINET
- (1) SB36 BASE CABINET
- (1) BBC36/39 BASE CABINET
- (2) W4830 WALL CABINET
- (1) W4230 WALL CABINET
- (1) WBC33/36 WALL CABINET

WATER BOTTLE NOTE:  
DRINKING FOUNTAINS OR BOTTLED WATER SHALL BE PROVIDED  
ON SITE BY OTHERS IN ACCORDANCE WITH SECTION 410.1 OF  
THE INTERNATIONAL PLUMBING CODE. A SERVICE SINK SHALL  
BE PROVIDED AND INSTALLED ON SITE WHERE REQUIRED.

## LEGEND

SHEET	DESCRIPTION	DRAWING ABBREVIATIONS
C1	COVER SHEET	A.F.F. ABOVE FINISHED FLOOR
A1	FLOOR PLAN	B.F.C. BELOW FINISHED CEILING
A2	EXTERIOR ELEVATION	E.O.U. END OF UNIT DIMENSION
E1-2	ELECTRICAL PLAN	E.O.W. END OF WALL DIMENSION
M1	MECHANICAL PLAN	F/G FIBERGLASS
P1	PLUMBING SCHEMATIC	GSL GROUND SNOW LOAD
S1	SECTION PLAN	PSF POUNDS PER SQUARE FOOT
S2	BLOCKING DIAGRAM	U.O.N. UNLESS OTHERWISE NOTED

**EXPRESS**  
1301 TRIMBLE RD. INC.

**1301 TRIMBLE RD.  
EDGEWOOD, MD 21009  
PHONE: (410) 676-3700  
FAX: (410) 676-7288**

**58120 C.R. 3, SOUTH  
ELKHART, IN 46516  
PHONE: (574) 295-1214  
FAX: (574) 295-2232**

**64 HESS ROAD  
LEOLA, PA 17540  
PHONE: (717) 656-2081  
FAX: (717) 656-4349**



WILLIAMS SCOTSMAN INC.  
ADMIN BUILDING  
FO2460  
09052452-53

FO2460  
09052452-53

**ISSUE:**

DESIGNED: 7/21/09

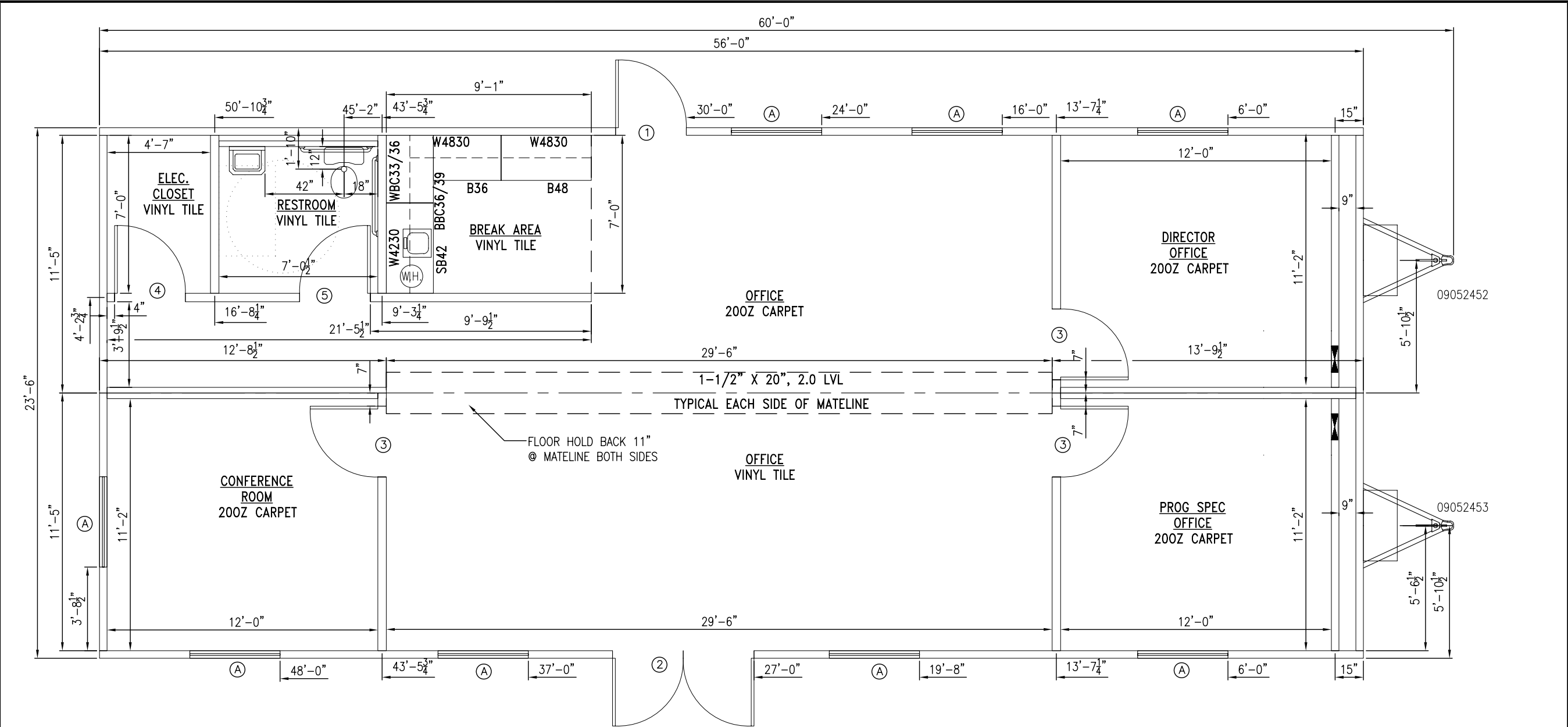
DRAWN BY: CTN

PRINTED:  
7/28/09 3:53PM

DRAWING #

**APPROVED BY:**

# C1



**BUILDING NOTES:**

1. ATTIC VENTILATION SHALL NOT BE LESS THAN 1/150th OF THE HORIZONTAL AREA TO BE VENTILATED, UNLESS A VAPOR BARRIER IS INSTALLED THEN THE RATE SHALL BE REDUCED TO 1/300th.
2. THE BUILDING EXTERIOR AND ALL FACILITIES WITHIN THE BUILDING SHALL BE IDENTIFIED WITH THE INTERNATIONAL SYMBOL OF ACCESSIBILITY.
3. BUILDER/DEALER SHALL BE RESPONSIBLE FOR ON SITE BARRIER FREE PROVISIONS: STEPS, RAMPS, PARKING SIGNS, ETC. - BUILDING APPROACH (WALK OR RAMP) WITH A MINIMUM WIDTH OF 5' AND A GRADIENT OF NOT MORE THAN 1/20 FEET FOR SIDEWALKS AND A MAXIMUM OF 1/12 FOR RAMPS.
4. LANDING SHALL BE PROVIDED OUTSIDE OF EACH EXIT DOOR, EACH EXIT DOOR - 5 FOOT MINIMUM WIDTH WITH 1/2" MAXIMUM CHANGE N ELEVATION. LANDING TO EXTEND A MINIMUM OF 24" PAST STRIKE EDGE OF THE DOOR. LANDING AND RAMPS BY OTHERS AT SITE.
5. ALL LOCKS TO BE UNLOCKABLE FROM THE INTERIOR WITHOUT THE USE OF A KEY OR SPECIAL KNOWLEDGE.
6. CORROSION RESISTANT FLASHING AT TOP AND SIDES OF DOORS, WINDOWS AND AT ROOF PENETRATIONS.
7. ALL GLAZING WITHIN 24" OF EXTERIOR PASSAGE DOORS AND IN PASSAGE DOORS, OR WITHIN 18" OF FLOOR TO BE "SAFETY GLAZED" AND SO MARKED.

DOOR/WINDOW SPECIFICATIONS & ROUGH-IN SCHEDULE			
I.D.	DESCRIPTION	ROUGH-IN	QNTY
①	3/0 X 6/8 20GA PRE-HUNG COMMERCIAL STEEL DOOR W/18GA STEEL FRAME, 5" X 20" VISION PANEL, DOOR CLOSER TELL #12641, KEYED LEVER SET TELL #LC2681, WEATHER STRIPPING, ALUMINUM THRESHOLD & ALUMINUM DRIP CAP (DOOR AND FRAME ARE PAINTED "WHITE")	36-1/4" X 80-1/4"	1
②	6/0 X 6/8 18GA COMMERCIAL STEEL DOUBLE DOOR W/16GA STEEL FRAME, REMOVABLE CENTER MULLION 5"X20" VISION PANEL, DOOR CLOSER TELL #12641, KEYED LEVER SET #LC2681, WEATHER STRIPPING, ALUMINUM THRESHOLD & ALUMINUM DRIP CAP (DOOR AND FRAME PAINTED TO MATCH EXTERIOR)	74" X 81"	1
③	3/0 X 6/8 HOLLOW CORE PRE-FINISHED WOOD GRAIN W/PRE-FINISHED WOOD GRAIN JAMB AND CASING, FLOOR MOUNTED DOOR STOPS & PASSAGE LEVER SET TELL #LC2675	38" X 81-3/4"	3
④	3/0 X 6/8 HOLLOW CORE PRE-FINISHED WOOD GRAIN W/PRE-FINISHED WOOD GRAIN JAMB AND CASING, FLOOR MOUNTED DOOR STOPS & KEYED LEVER SET TELL #LC2686	38" X 81-3/4"	1
⑤	3/0 X 6/8 HOLLOW CORE PRE-FINISHED WOOD GRAIN W/PRE-FINISHED WOOD GRAIN JAMB AND CASING, FLOOR MOUNTED DOOR STOPS & PRIVACY LEVER SET TELL #LC2676	38" X 81-3/4"	1
A	4/0 X 4/0 "WHITE" SLIVERLINE VINYL FRAMED HORIZONTAL SLIDER #2950 SERIES W/DOUBLE INSULATED LOW-E ARGON FILLED GLASS, "WHITE" PRE-FINISHED WOOD RETURN AND CASING, F/G INSECT SCREENS & "WHITE" VINYL MINI BLINDS	48 1/2" X 47 1/2" UP 80" A.F.F. TO TOP	8

Mobile/Modular  
**EXPRESS**  
INC.

1301 TRIMBLE RD.  
EDGEWOOD, MD 21009  
PHONE: (410) 676-3700  
FAX: (410) 676-7288

58120 C.R. 3, SOUTH  
ELKHART, IN 46516  
PHONE: (574) 295-1214  
FAX: (574) 295-2232

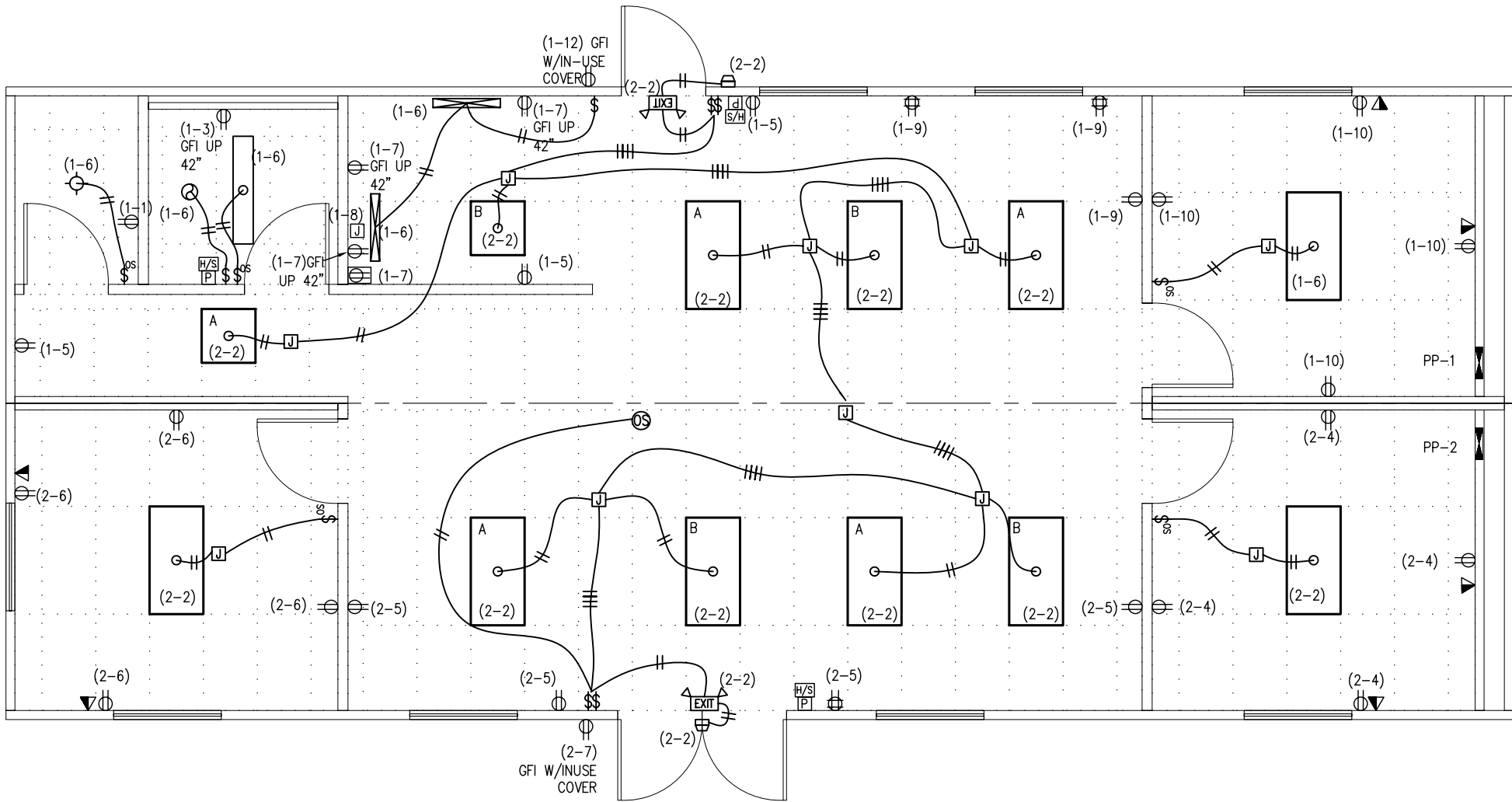
64 HESS ROAD  
LEOLA, PA 17540  
PHONE: (717) 656-2081  
FAX: (717) 656-4349

WILLIAMS SCOTSMAN INC.  
FO2460  
ADMIN BUILDING

FLOOR  
PLAN

DWG. NO:	7/21/09	REVISIONS					
A1							
DESIGNED: 7/21/09							
PRINTED: 7/28/09 3:53PM							
SERIAL NO.: 09052452-53							
SCALE: N.T.S.							





NOTE:  
SMOKE DETECTOR PROVIDED BY CUSTOMER FOR  
INSULATION ON SITE BY OTHERS

09052452

(1-12) GFI  
W/IN-USE  
COVER

09052453

(2-1,3)

**ELECTRICAL LEGEND**

- 100A SINGLE PHASE BREAKER PANEL W/1-1/2" CONDUIT SERVICE ENTRANCE THRU FLOOR
- ONE TUBE UNDER CABINET MOUNTED FLUORESCENT LIGHT W/T-8 LAMPS & WRAP AROUND DIFFUSERS #UC24-120-EU
- 1X4 TWO TUBE GRID MOUNTED FLUORESCENT LIGHT W/T-8 LAMPS & WRAP AROUND DIFFUSERS #P414-232G-MA16S-EU
- 2X4 THREE-TUBE GRID MOUNTED FLUORESCENT LIGHT W/T-8 LAMPS & SINGLE BALLASTS #P4D24-332G-MA36-S-3EU
- 2X2 U-TUBE GRID MOUNTED FLUORESCENT LIGHT W/T-8 LAMPS & SINGLE BALLASTS #P4D22-232U6G-MA33S-EU
- SINGLE POLE TOGGLE SWITCH UP 44" A.F.F. (U.O.N.)
- SINGLE POLE WALL MOUNTED OCCUPANCY SENSOR UP 44" A.F.F. (U.O.N.) #WSP200W
- SINGLE POLE TOGGLE SWITCHES UP 44" A.F.F. (U.O.N.) (DUAL SWITCHED PER 2006 INTERNATIONAL ENERGY CONSERVATION CODE)
- 13W FLUORESCENT LIGHT (825 LUMENS) W/BATTERY BACKUP EMERGENCY FEATURE, UP 84" A.F.F., PHOTO-CELL CONTROLLED, #30S-CP-HB-13PL-NPF-120-EM-LP
- COMBINATION DUAL HEAD EMERG./SINGLE FACED EXIT LIGHT W/BATTERY BACKUP, AP70RWHDH
- 150CFM EXHAUST FAN
- 15A. DUPLEX RECEPTACLE, 110V. UP 18" A.F.F. (U.O.N.)
- 15A. QUAD RECEPTACLE, 110V. UP 18" A.F.F. (U.O.N.)
- 15A. HEAT TAPE RECEPTACLE, 110V.
- JUNCTION BOX PER PLAN
- DATA/COMMUNICATION ROUGH-IN W/SINGLE GANG BOX UP 18" A.F.F. & 1/2" PLASTIC CONDUIT TO BELOW FLOOR (EQUIPMENT ON SITE BY OTHERS)
- PULL STATION & HOR/STROBE ROUGH-IN W/SINGLE GANG BOX UP 44" A.F.F., (1) SINGLE GANG BOX UP 84" A.F.F. & 1/2" PLASTIC CONDUIT TO BELOW FLOOR (EQUIPMENT ON SITE BY OTHERS)
- 26 WATT RECESSED LIGHT
- CEILING MOUNTED OCCUPANCY SENSOR DT-355

### ELECTRICAL:

1. ALL RECEPTACLES TO BE GROUNDED TYPE.
2. ALL WIRING TO BE PER N.E.C., W/TYPE ROMEX OR MC WHERE EXPOSED ABOVE GRID CEILING (COPPER) W/GROUND CONDUCTOR.
3. MAIN PANEL TO BE MARKED "SUITABLE FOR USE AS SERVICE EQUIPMENT", AND BE EQUIPPED WITH BREAKER/FUSE TYPE OVER CURRENT PROTECTION.
4. PROPER THERMAL OVERLOAD PROTECTION TO BE PROVIDED FOR ALL MOTORS.
5. DISCONNECTING MEANS WITHIN SIGHT REQUIRED FOR ALL MOTORS.
6. WEATHERPROOF PROTECTION REQUIRED FOR ALL OUTDOOR LIGHTS, RECEPTACLES AND DISCONNECTS.
7. PROPER WORKING CLEARANCES TO BE PROVIDED AND MAINTAINED ABOUT ALL ELECTRICAL EQUIPMENT.
8. ALL FLUORESCENT FIXTURES REQUIRE THERMAL PROTECTION AND PROPER CLEARANCES FROM INSULATION, ALSO APPLICABLE FOR INCANDESCENT FIXTURES.
9. COMBINATION EXHAUST FAN/LIGHT AND ALL RECESSED INCANDESCENT FIXTURES TO BE WITH THERMAL PROTECTION.
10. EXIT LIGHTS (IF ELECTRIC) MUST BE FED FROM AN APPROVED EMERGENCY SERVICE CONNECTED AHEAD OF, BUT NOT WITHIN MAIN SERVICE DISCONNECTING MEANS ENCLOSURE, AND INSTALLED AS PER SERVICE REQUIREMENTS, OR BE BATTERY BACKUP TYPE UNITS.
11. SERVICE CONDUCTORS LOCATED WITHIN THE PERIMETER OF THE BUILDING SHALL BE INSTALLED IN ACCORDANCE WITH NATIONAL ELECTRIC CODE
12. EXTERIOR LIGHTS ARE TO BE PHOTO-CELL CONTROLLED AND BI-LEVEL SWITCHING OF INTERIOR LIGHTS IN ACCORDANCE WITH INTERNATIONAL ENERGY CONSERVATION OR STATE CODES.
13. INTERIOR LOCATION OF ELECTRICAL PANEL REQUIRES A DISCONNECT TO BE INSTALLED AT THE POINT OF ENTRANCE NEAREST THE SERVICE CONDUCTORS.
14. INSULATED WIRE STAPLES
15. TAMPER PROOF RECEPTACLES

**CIRCUIT NOTE:**  
CIRCUIT IDENTIFICATION IS  
PANEL# - CIRCUIT #

PANEL: PP-1				100A. MAIN BREAKER SUB PANEL 120/240V., SINGLE PHASE, 3 WIRE							
LOCATION: EXTERIOR WALL				10,000 AIC., BOT. FEED							
MOUNTING TYPE: RECESSED				1-1/2" SERVICE ENTRANCE, COPPER BUS, GROUND BAR							
CIRC. NO.	CIRC. BKR.	WIRE	POLE	CIRCUIT DESIGNATION	A	B	CIRCUIT DESIGNATION	CIRC. NO.	CIRC. BKR.	WIRE	POLE
1	60A.	6/3	2	2-1/2 TON HVAC UNIT	48	1.5	RECEPTACLES	2	20A.	12/2	1
3				W/10KW ELEC. HEAT	48	1.5	RECEPTACLES	4	20A.	12/2	1
5	20A.	12/2	1	RECEPTACLES	3.0	4.4	LIGHTS & FAN	6	20A.	12/2	1
7	20A.	12/2	1	RECEPTACLES		4.5	6-GALLON WATER HEATER	8	20A.	12/2	1
9	20A.	12/2	1	RECEPTACLES	7.5	6	RECEPTACLES	10	20A.	12/2	1
11						3	RECEPTACLES	12	20A.	12/2	1
					70.4	68					

PANEL: PP-2				100A. MAIN BREAKER SUB PANEL 120/240V., SINGLE PHASE, 3 WIRE							
LOCATION: EXTERIOR WALL				10,000 AIC., BOT. FEED							
MOUNTING TYPE: RECESSED				1-1/2" SERVICE ENTRANCE, COPPER BUS, GROUND BAR							
CIRC. NO.	CIRC. BKR.	WIRE	POLE	CIRCUIT DESIGNATION	A	B	CIRCUIT DESIGNATION	CIRC. NO.	CIRC. BKR.	WIRE	POLE
1	60A.	6/3	2	2-1/2 TON HVAC UNIT	48	6.6	LIGHTS	2	20A.	12/2	1
3				W/10KW ELEC. HEAT	48	6	RECEPTACLES	4	20A.	12/2	1
5	20A.	12/2	1	RECEPTACLES	7.5			6			
7	20A.	12/2	1	RECEPTACLES		1.5	RECEPTACLES	8	20A.	12/2	1
9								10			
					62.1	61.5					

Mobile/Modular  
**EXPRESS**  
INC.

1301 TRIMBLE RD.  
EDGEWOOD, MD 21009  
PHONE: (410) 676-3700  
FAX: (410) 676-7288

58120 C.R. 3, SOUTH  
ELKHART, IN 46516  
PHONE: (574) 295-1214  
FAX: (574) 295-2232

64 HESS ROAD  
LEOLA, PA 17540  
PHONE: (717) 656-2081  
FAX: (717) 656-4349

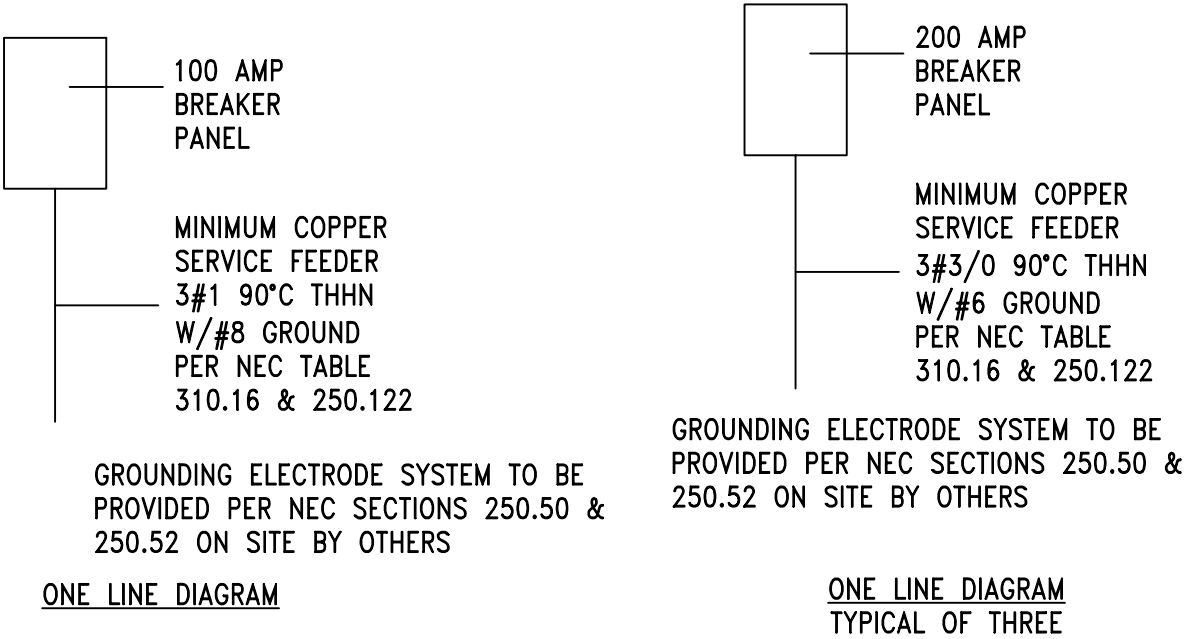
WILLIAMS SCOTSMAN INC.  
FO2460  
ADMIN BUILDING

### ELECTRICAL PLAN

DWG. NO.:					
<b>E1</b>	7/21/09				
DESIGNED:	7/21/09				
PRINTED:	7/28/09 3:53PM				
SERIAL NO.:	09052452-53				
SCALE:	N.T.S.				
		REVISIONS			

Electrical Load Calculations Panel #1						
	Item	QTY	Watts	%	Total	
Non-Continuous loads	Receptacles	16	180	1	2880	Watts
			Sub Total		2880	Watts
Continuous loads	Interior Lights	1	96	1.25	120	Watts
	Interior Lights	1	26	1.25	32.5	Watts
	Interior Lights	0	32	1.25	0	Watts
	Cabinet Lights	2	32	1.25	80	Watts
	Exterior lights	0	13	1.25	0	Watts
	Emergency Lights	0	2.8	1.25	0	Watts
	Fan	1	87	1.25	108.75	Watts
			Sub Total		341	Watts
Other Continuous loads	Water Heater	1	1500	1.25	1875	
	HVAC	1	13440	1.25	16800	
			Sub Total		18675	
Calculated Lighting load		211.8	3.5	1	741	Watts
Lighting Circuits required	341	/	120	=	2.8	Amps
Note: Use Calculated lighting load because it exceeds 125 percent of the actual lighting load						
Panel Size	Non-Continuous Electrical Load				2880	Watts
	Continuous Electrical Load		741	1	741	Watts
	Other Continuous Electrical Load				18675	
			Total Load		22296	Watts
Panel Phase Amps	22296	/	240	=	92.9	Amps
Electrical Load Calculations Panel #2						
	Item	QTY	Watts	%	Total	
Non-Continuous loads	Receptacles	14	180	1	2520	Watts
			Sub Total		2520	Watts
Continuous loads	Interior Lights	9	96	1.25	1080	Watts
	Interior Lights	0	26	1.25	0	Watts
	Interior Lights	2	32	1.25	80	Watts
	Cabinet Lights	0	32	1.25	0	Watts
	Exterior lights	2	13	1.25	32.5	Watts
	Emergency Lights	2	2.8	1.25	7	Watts
	Fan	0	87	1.25	0	Watts
			Sub Total		1200	Watts
Other Continuous loads	Water Heater	0	1500	1.25	0	
	HVAC	1	13440	1.25	16800	
			Sub Total		16800	
Calculated Lighting load		985	3.5	1	3448	Watts
Lighting Circuits required	1200	/	120	=	10.0	Amps
Note: Use Calculated lighting load because it exceeds 125 percent of the actual lighting load						
Panel Size	Non-Continuous Electrical Load				2520	Watts
	Continuous Electrical Load		3448	1	3448	Watts
	Other Continuous Electrical Load				16800	
			Total Load		22768	Watts
Panel Phase Amps	22768	/	240	=	94.9	Amps

Electrical Load Calculations Overall Panel						
	Item	QTY	Watts	%	Total	
Non-Continuous loads	Receptacles	31	180	1	5580	Watts
			Sub Total		5580	Watts
Continuous loads	Interior Lights	10	96	1.25	1200	Watts
	Interior Lights	1	26	1.25	32.5	Watts
	Interior Lights	2	32	1.25	80	Watts
	Cabinet Lights	2	32	1.25	80	Watts
	Exterior lights	2	13	1.25	32.5	Watts
	Emergency Lights	2	2.8	1.25	7	Watts
	Fan	1	87	1.25	108.75	Watts
			Sub Total		1541	Watts
Other Continuous loads	Water Heater	1	1500	1.25	1875	
	HVAC	2	13440	1.25	33600	
			Sub Total		35475	
Calculated Lighting load		1140.6	3.5	1	3992	Watts
Lighting Circuits required	1541	/	120	=	12.8	Amps
Note: Use Calculated lighting load because it exceeds 125 percent of the actual lighting load						
Panel Size	Non-Continuous Electrical Load				5580	Watts
	Continuous Electrical Load		3992	1	3992	Watts
	Other Continuous Electrical Load				35475	
			Total Load		45047	Watts
Panel Phase Amps	45047	/	240	=	187.7	Amps



Mobile/Modular  
**EXPRESS**  
INC.

1301 TRIMBLE RD.  
EDGEWOOD, MD 21009  
PHONE: (410) 676-3700  
FAX: (410) 676-7288

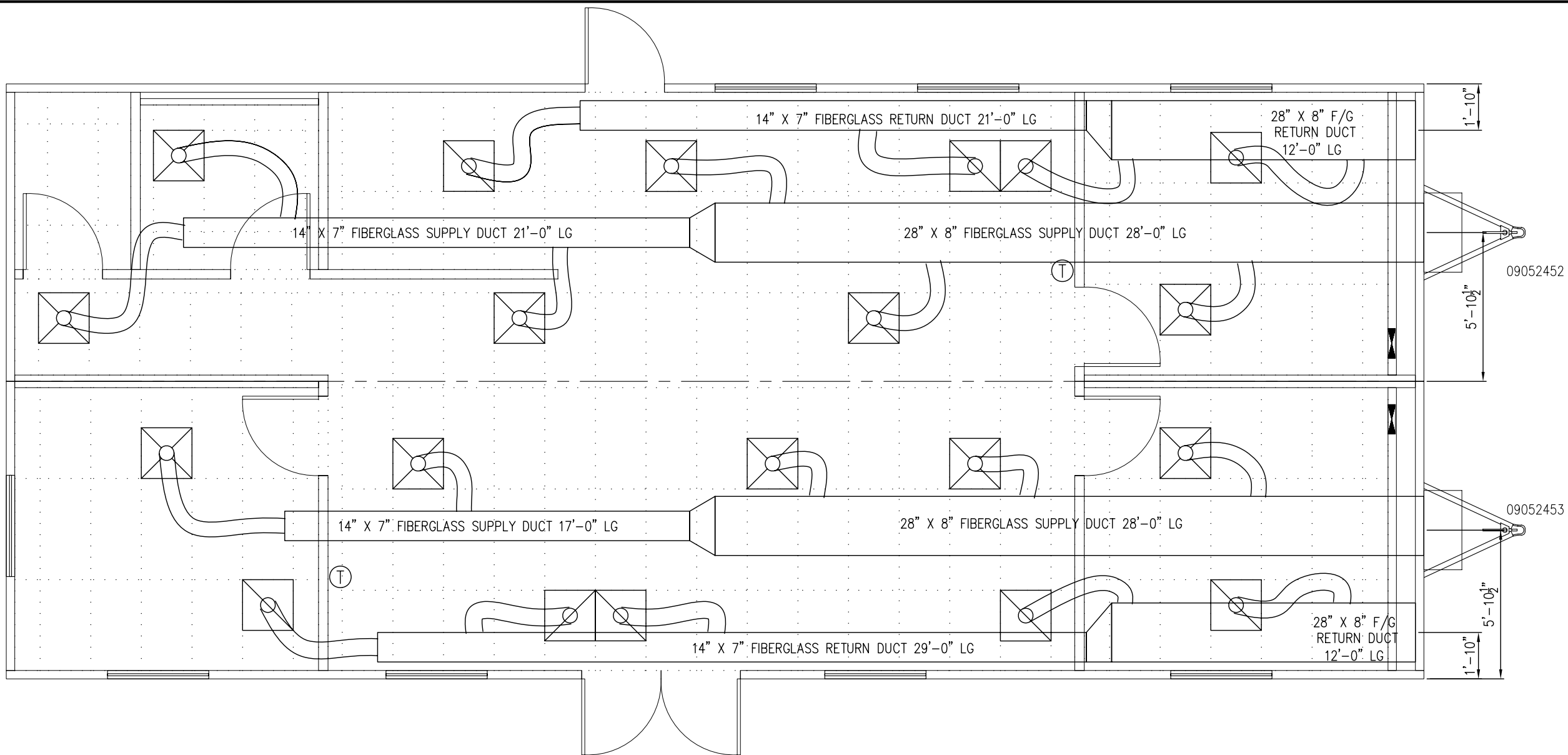
58120 C.R. 3, SOUTH  
ELKHART, IN 46516  
PHONE: (574) 295-1214  
FAX: (574) 295-2232

64 HESS ROAD  
LEOLA, PA 17540  
PHONE: (717) 656-2081  
FAX: (717) 656-4349

WILLIAMS SCOTSMAN INC.  
FO2460  
ADMIN BUILDING

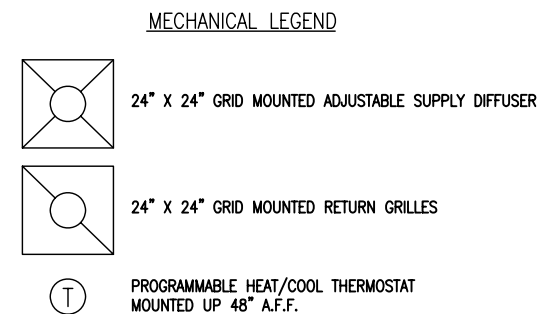
ELECTRICAL  
PLAN

DWG. NO.:					
E2	7/21/09				
DESIGNED:	7/21/09	REVISIONS			
PRINTED:	7/28/09 3:53PM				
SERIAL NO.:	09052452-53				
SCALE:	N.T.S.				



**MECHANICAL:**

1. EXHAUST FANS AND VENTING EQUIPMENT TO BE DUCTED TO EXTERIOR AND TERMINATE AT AN APPROVED VENT CAP.
2. "MECHANICAL VENTILATION", USE 75% OF RETICULATED AIR VIA HVAC UNIT.
3. DUCT EXPOSED TO NON-CONDITIONED SPACES SHALL BE INSULATED TO PROVIDE A THERMAL RESISTANCE.
4. FLOOR AND WALL REGISTERS: THE LOWER EDGE SHALL NOT BE LESS THAN 1/2" FROM THE FLOOR IN TOILET ROOMS, LAUNDRY ROOMS OR UTILITY ROOMS.
5. METAL CHIMNEYS SHALL EXTEND AT LEAST 3 FT. ABOVE THE HIGHEST POINT WHERE THEY PASS THROUGH THE ROOM AND 2 FT. MINIMUM HIGHER THAN OTHER PORTIONS OF A BUILDING WITHIN 10 FT.
6. DUCTS SHALL BE CLASS I, IF NON-METALLIC, AND IF ALUMINUM OR GALVANIZED SHALL BE PER TABLE M-603.3 2006 IMC
7. RETURN AIR VIA GRILLES IN WALL, DOORS OR CEILING AS NOTED.



Mobile/Modular  
**EXPRESS**  
INC.

1301 TRIMBLE RD.  
EDGEWOOD, MD 21009  
PHONE: (410) 676-3700  
FAX: (410) 676-7288

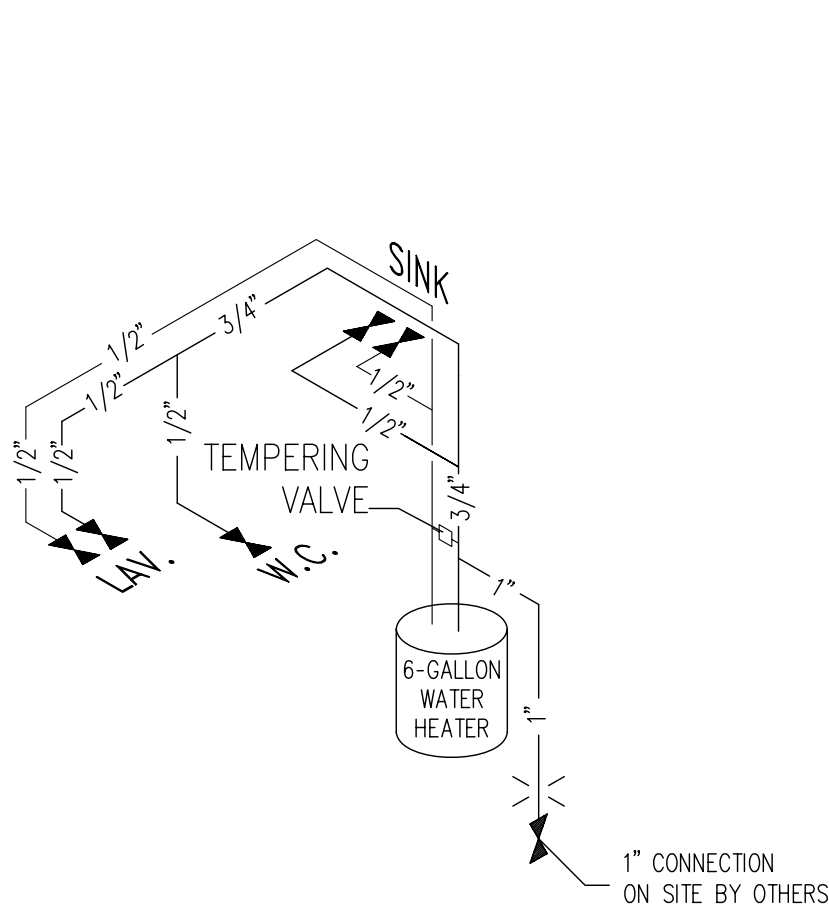
58120 C.R. 3, SOUTH  
ELKHART, IN 46516  
PHONE: (574) 295-1214  
FAX: (574) 295-2232

64 HESS ROAD  
LEOLA, PA 17540  
PHONE: (717) 656-2081  
FAX: (717) 656-4349

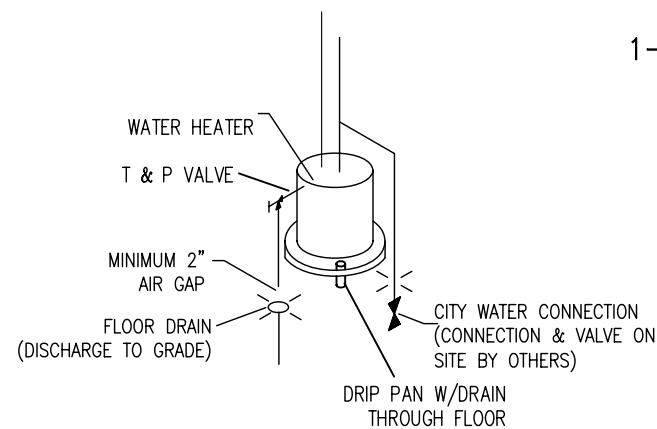
WILLIAMS SCOTSMAN INC.  
FO2460  
ADMIN BUILDING

MECHANICAL  
PLAN

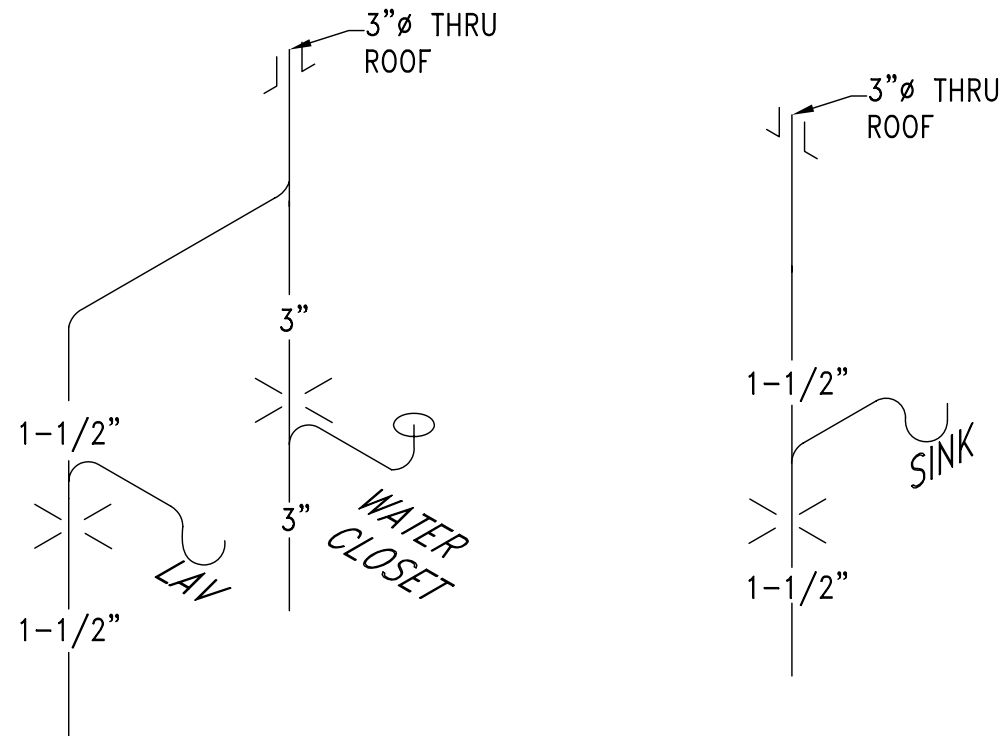
DWG. NO:	7/21/09	REVISIONS					
M1							
DESIGNED: 7/21/09							
PRINTED: 7/28/09 3:53PM							
SERIAL NO.: 09052452-53							
SCALE: N.T.S.							



WATER SUPPLY SCHEMATICS  
MATERIAL: CVPC PIPE & FITTINGS



WATER HEATER DETAIL



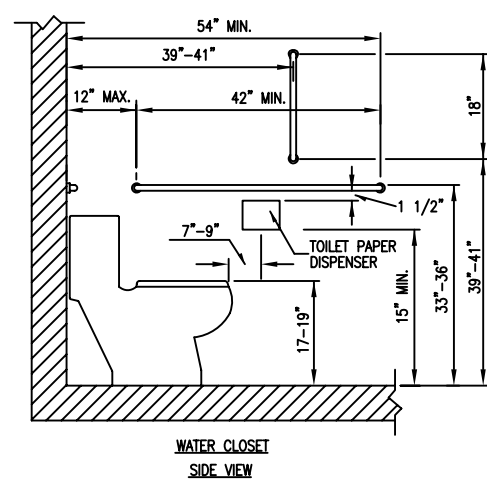
WASTE SCHEMATICS  
MATERIAL: SCHEDULE 40  
PVC PIPE & FITTINGS

SUPPLY NOTES:

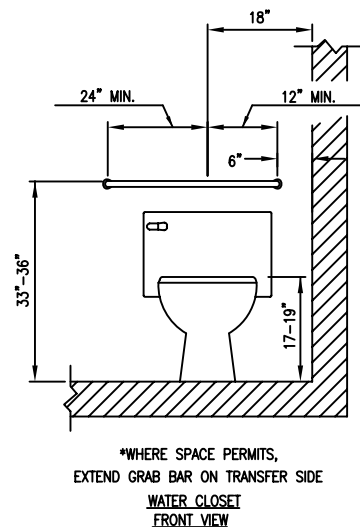
1. WATER SUPPLY LINES TO BE CPVC, SUPPORTED 4' O.C. MAX.
2. WATER TEMPERATURE FACTORY SET AT A MAXIMUM OF 110°F.
3. SHUT OFF VALVES ARE TO BE PROVIDED AT EACH FIXTURE IN ACCORDANCE WITH SCHEMATICS ABOVE.
4. WATER HAMMER ARRESTORS PROVIDED, OR IF AIR CHAMBERS, TO BE MINIMUM 15" LONG AND NOT LESS THAN THE DIAMETER OF PIPE SERVED.
5. DIELECTRIC UNIONS TO BE USED AT CONNECTIONS OF WATER LINES TO WATER HEATER.
6. COLD WATER INLET TO BE PROVIDED WITH A SHUT OFF VALVE ABOVE FLOOR AT THE COLD WATER SUPPLY PER SCHEMATIC.
7. FULL SIZED SHUT OFF VALVE TO BE PROVIDED BETWEEN BUILDING AND WATER MAIN/METER BY OTHERS ON SITE.

WASTE NOTES:

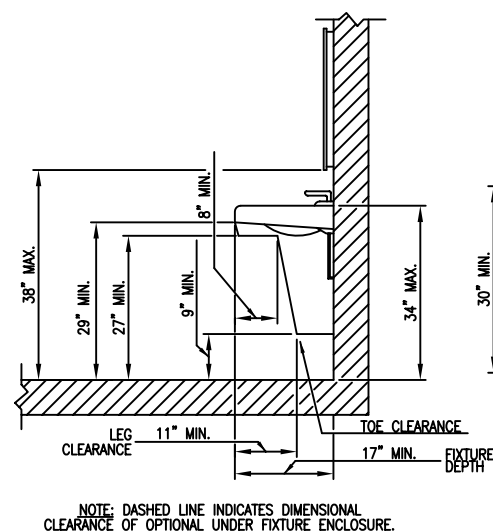
1. DMV MATERIAL TO BE CONCEALED SCHEDULE 40 PVC.
2. ALL PIPES TO BE SECURED MAXIMUM 4' O.C.
3. ALL CLEAN OUTS SHALL BE ACCESSIBLE, PROVIDED AT THE BASE OF ALL WASTE/SOIL STACKS, AND SO THAT ALL HORIZONTAL PIPING MAY BE REACHED WITHOUT PASSING THROUGH MORE THAN 45° OF TURNS.
4. 1/4" PER. FT SLOPE PROVIDED ON ALL HORIZONTAL BRANCHES.
5. VENT PIPE SHALL END 12" ABOVE FINISHED ROOF AND NOT BE LOCATED WITHIN 10' OF OTHER VENT OPENINGS.
6. ALL VERTICAL TO HORIZONTAL OR HORIZONTAL TO HORIZONTAL CHANGES IN DIRECTION SHALL BE THROUGH LONG TURN T.Y. OR COMBINATION WYE FITTINGS WITH 1/8" BEND.
7. ALL HORIZONTAL TO VERTICAL CHANGES IN DIRECTION SHALL BE THROUGH SANITARY TEE, OR IF AT THE SAME LEVEL ON THE STACK THEN THROUGH AN APPROVED DOUBLE FIXTURE FITTING.



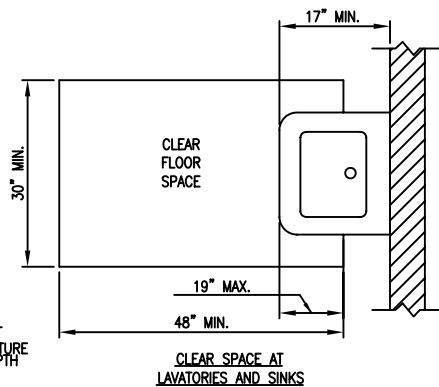
WATER CLOSET  
SIDE VIEW



\*WHERE SPACE PERMITS,  
EXTEND GRAB BAR ON TRANSFER SIDE  
WATER CLOSET  
FRONT VIEW



NOTE: DASHED LINE INDICATES DIMENSIONAL  
CLEARANCE OF OPTIONAL UNDER FIXTURE ENCLOSURE.



CLEAR SPACE AT  
LAVATORIES AND SINKS

Mobile/Modular  
**EXPRESS**  
INC.

1301 TRIMBLE RD.  
EDGEWOOD, MD 21009  
PHONE: (410) 676-3700  
FAX: (410) 676-7288

58120 C.R. 3, SOUTH  
ELKHART, IN 46516  
PHONE: (574) 295-1214  
FAX: (574) 295-2232

64 HESS ROAD  
LEOLA, PA 17540  
PHONE: (717) 656-2081  
FAX: (717) 656-4349

WILLIAMS SCOTSMAN INC.  
FO2460  
ADMIN BUILDING

PLUMBING  
SCHEMATIC

DWG. NO.:

**P1**

DESIGNED:  
7/21/09

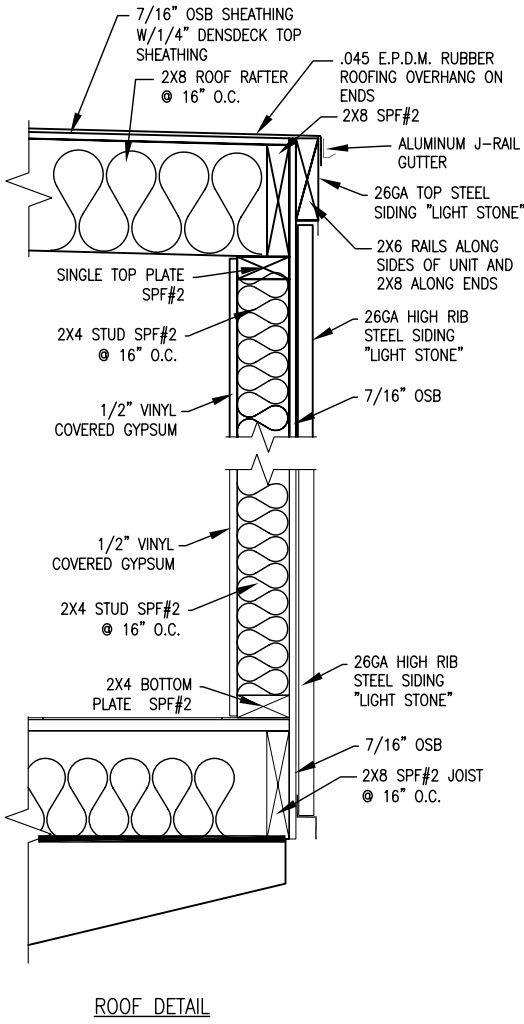
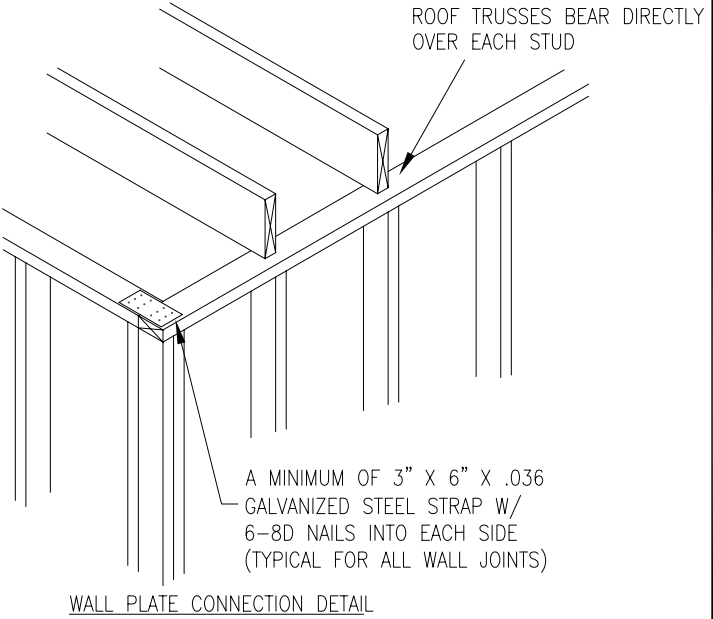
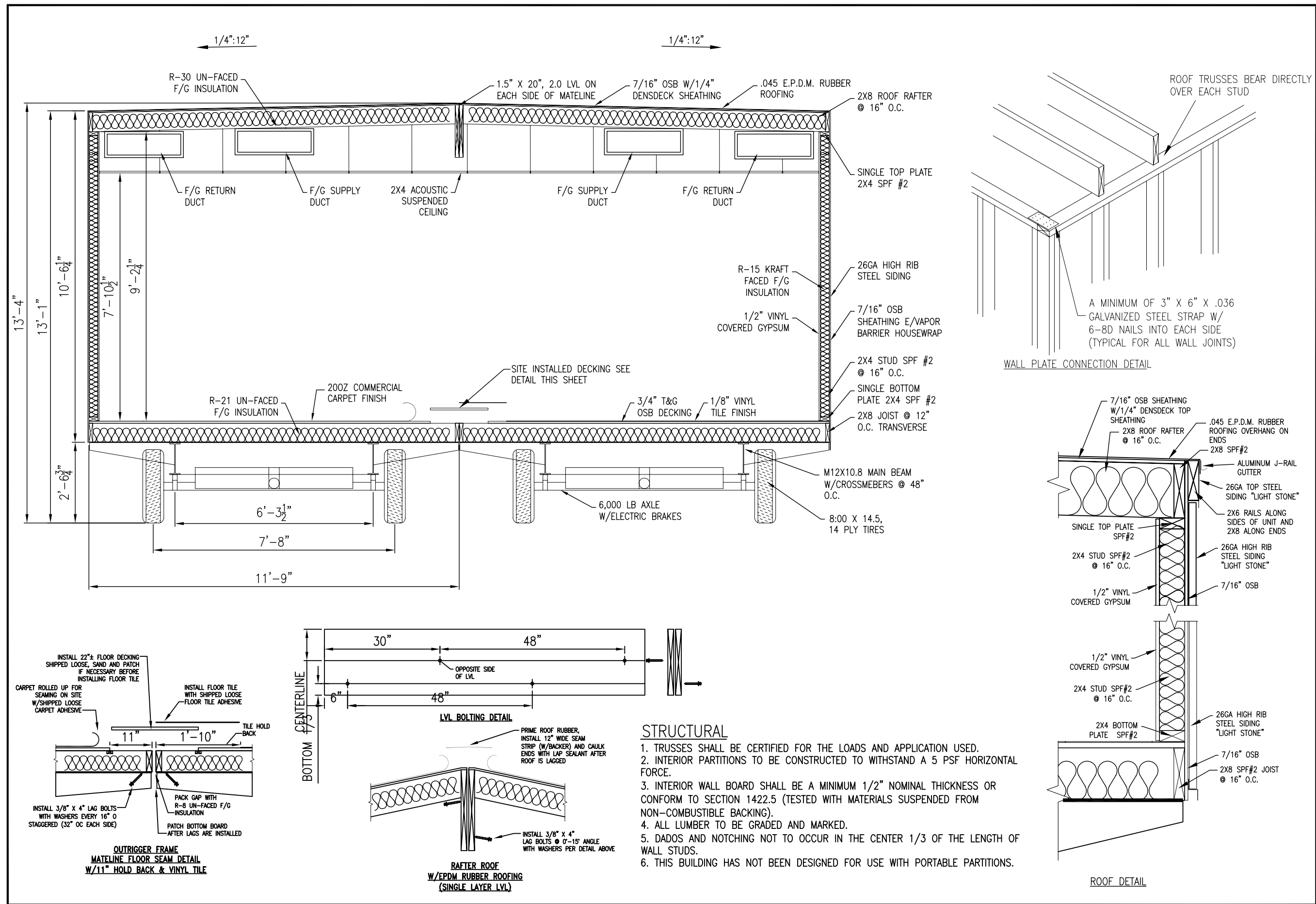
PRINTED:  
7/28/09 3:53PM

SERIAL NO.:  
09052452-53

SCALE:  
N.T.S.

7/21/09

REVISIONS



- STRUCTURAL**
1. TRUSSES SHALL BE CERTIFIED FOR THE LOADS AND APPLICATION USED.
  2. INTERIOR PARTITIONS TO BE CONSTRUCTED TO WITHSTAND A 5 PSF HORIZONTAL FORCE.
  3. INTERIOR WALL BOARD SHALL BE A MINIMUM 1/2" NOMINAL THICKNESS OR CONFORM TO SECTION 1422.5 (TESTED WITH MATERIALS SUSPENDED FROM NON-COMBUSTIBLE BACKING).
  4. ALL LUMBER TO BE GRADED AND MARKED.
  5. DADOS AND NOTCHING NOT TO OCCUR IN THE CENTER 1/3 OF THE LENGTH OF WALL STUDS.
  6. THIS BUILDING HAS NOT BEEN DESIGNED FOR USE WITH PORTABLE PARTITIONS.

Mobile/Modular  
**EXPRESS**  
INC.

1301 TRIMBLE RD.  
EDGEWOOD, MD 21009  
PHONE: (410) 676-3700  
FAX: (410) 676-7288

58120 C.R. 3, SOUTH  
ELKHART, IN 46516  
PHONE: (574) 295-1214  
FAX: (574) 295-2232

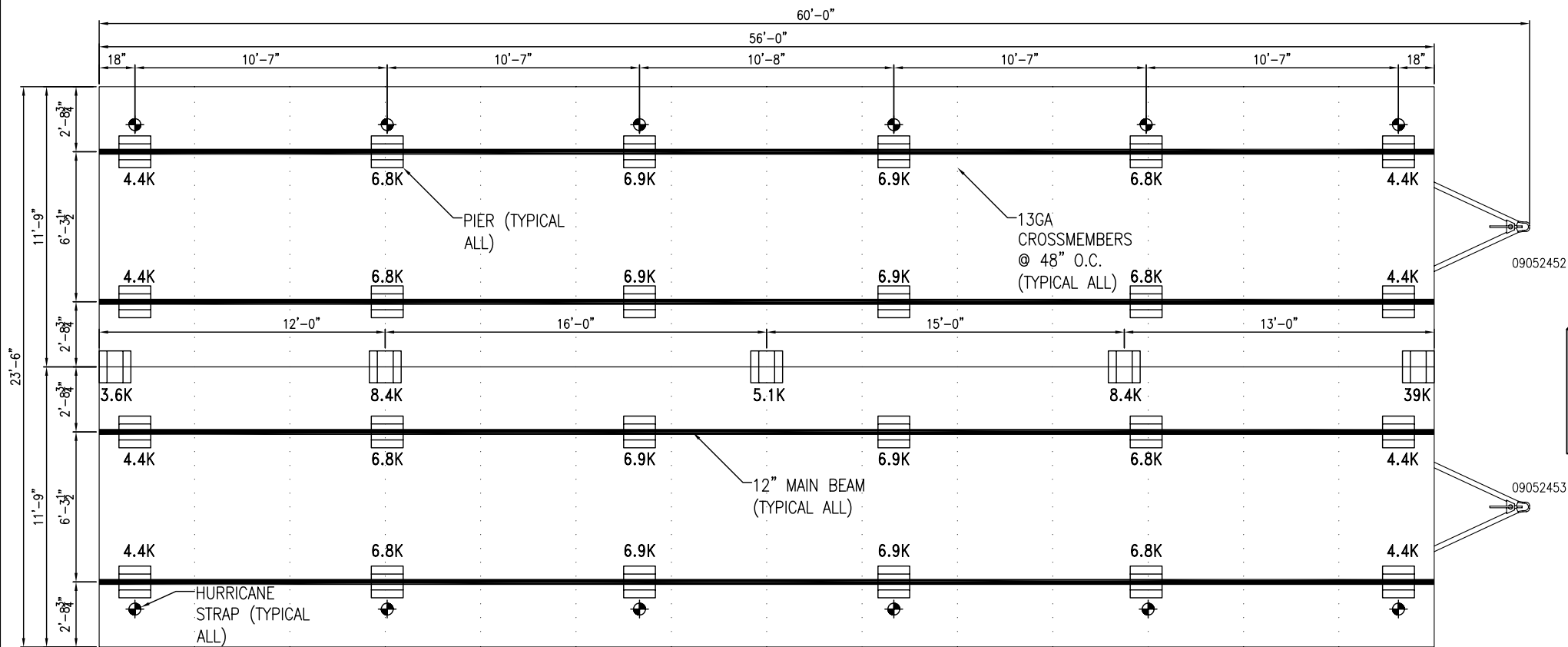
64 HESS ROAD  
LEOLA, PA 17540  
PHONE: (717) 656-2081  
FAX: (717) 656-4349

WILLIAMS SCOTSMAN INC.  
FO2460  
ADMIN BUILDING

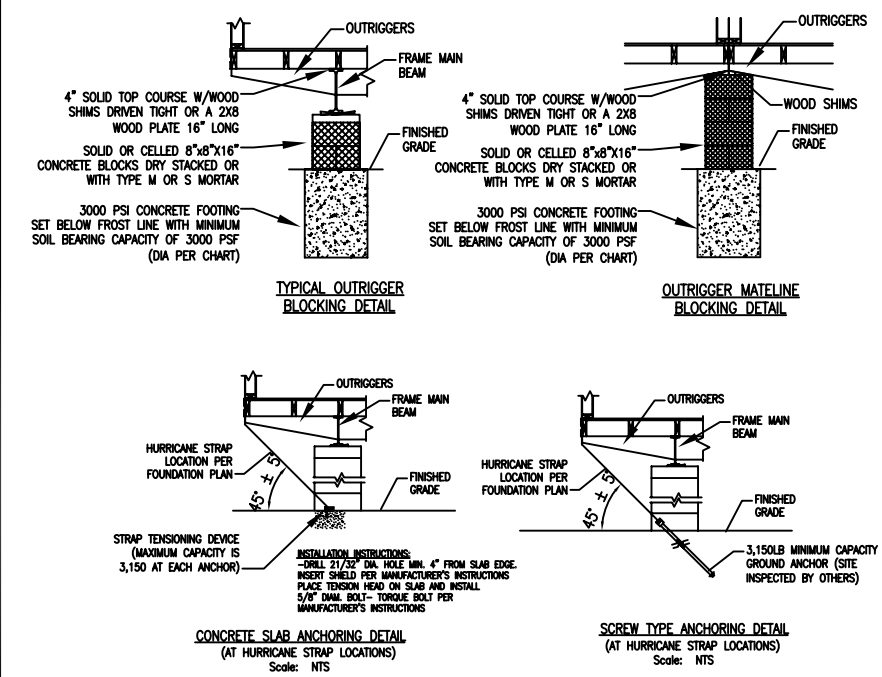
SECTION  
PLAN

DWG. NO.: <b>S1</b>	7/21/09	REVISIONS				
DESIGNED: 7/21/09						
PRINTED: 7/28/09 3:54PM						
SERIAL NO.: 09052452-53						
SCALE: N.T.S.						





**NOTE:**  
THIS BLOCKING DESIGN BY MOBILE/MODULAR EXPRESS, IS ONLY A SUGGESTED DESIGN. FOUNDATION DETAILS, FOUNDATION SIZES & TIE DOWN LOCATIONS SHALL BE SPECIFIED ACCORDING TO LOCAL JURISDICTION. FINAL DESIGN IS SUGGESTED TO BE APPROVED BY A PROFESSIONAL ENGINEER FAMILIAR WITH ALL OF THE SITE CONDITIONS.



- FOUNDATION NOTES:**
1. ALL FOUNDATION CONSTRUCTION, MATERIALS AND INSTALLATION SHALL BE IN ACCORDANCE WITH ALL APPLICABLE STATE AND LOCAL CODES. THE PIER LOCATIONS PROVIDED ON THIS PLAN ARE FOR THE SOLE PURPOSE OF IDENTIFYING THE LOCATION OF THE REQUIRED BLOCKING POINTS FOR THIS BUILDING. FOUNDATION REQUIREMENTS ARE NOT KNOWN DUE TO VARYING SOIL CONDITIONS. FOUNDATION REVIEW AND INSPECTION IS TO BE PERFORMED BY THE LOCAL OFFICIAL HAVING JURISDICTION.
  2. MINIMUM CONCRETE FOOTING DEPTH OF BELOW FROST LINE AND PER LOCAL CONDITIONS - 3,000 PSI @ 28 DAYS.
  3. SINGLE STACK CONCRETE BLOCK FOR PIERS UP TO 32" IN HEIGHT WITH TYPE M OR S MORTAR. DOUBLE STACK CONCRETE BLOCK FOR PIERS BETWEEN 32" & 72" WITH TYPE M OR S MORTAR.
  4. CORNER PIERS OVER 24" HIGH (THREE BLOCKS) SHALL BE DOUBLE BLOCK CONSTRUCTION WITH TYPE M OR S MORTAR.
  5. TIE-DOWN STRAPS TO BE 1-1/4" X .035" TYPE-1, FINISH B, GRADE 1 ZINC COATED STEEL STRAPPING CONFORMING WITH ASTM d3953-91. TIE DOWN STRAPS AND CONNECTING HARDWARE SHALL HAVE A MINIMUM WORKING CAPACITY OF 3,150 LBS.
  6. GROUND ANCHORS SHALL HAVE A 3,150# MINIMUM WORKING CAPACITY AND SHALL BE INSTALLED IN ACCORDANCE WITH THE MANUFACTURER'S SPECIFICATIONS.
  7. THE MINIMUM NET AREA OF VENTILATION OPENINGS SHALL NOT BE LESS THAN 1SQ. FT IN 150 SQ. FT OF CRAWL-SPACE AREA.

ROUND PIER MAXIMUM LOADS (KIPS)					
MINIMUM PIER DIMENSIONS (IN)	ALLOWABLE SOIL BEARING CAPACITY				
	2000PSF	2500PSF	3000PSF	3500PSF	4000PSF
18	3.5	4.4	5.3	6.2	7.1
20	4.4	5.5	6.5	7.6	8.7
22	5.3	6.6	7.9	9.2	10.6
24	6.3	7.9	9.4	11.0	12.6
26	7.4	9.2	11.1	12.9	14.7
28	8.6	10.7	12.8	15.0	17.1
30	9.8	12.3	14.7	17.2	19.6
32	11.1	14.0	16.8	19.5	22.3
34	12.6	15.8	18.9	22.1	25.2
36	14.1	17.7	21.2	24.7	28.3
38	15.7	19.7	23.6	27.5	31.4
40	17.5	21.8	26.2	30.5	34.9
42	19.2	24.0	28.8	33.6	38.4
44	21.1	26.3	31.6	36.9	42.2
46	23.0	28.8	34.6	40.3	46.1
48	25.1	31.4	37.6	43.9	50.2

Mobile/Modular  
**EXPRESS**  
INC.

1301 TRIMBLE RD.  
EDGEWOOD, MD 21009  
PHONE: (410) 676-3700  
FAX: (410) 676-7288

58120 C.R. 3, SOUTH  
ELKHART, IN 46516  
PHONE: (574) 295-1214  
FAX: (574) 295-2232

64 HESS ROAD  
LEOLA, PA 17540  
PHONE: (717) 656-2081  
FAX: (717) 656-4349

WILLIAMS SCOTSMAN INC.  
FO2460  
ADMIN BUILDING

BLOCKING  
PLAN

DWG. NO:				
S2	7/21/09	REVISIONS		
DESIGNED:				
7/21/09				
PRINTED:				
7/28/09 3:54PM				
SERIAL NO:				
09052452-53				
SCALE:				
N.T.S.				