

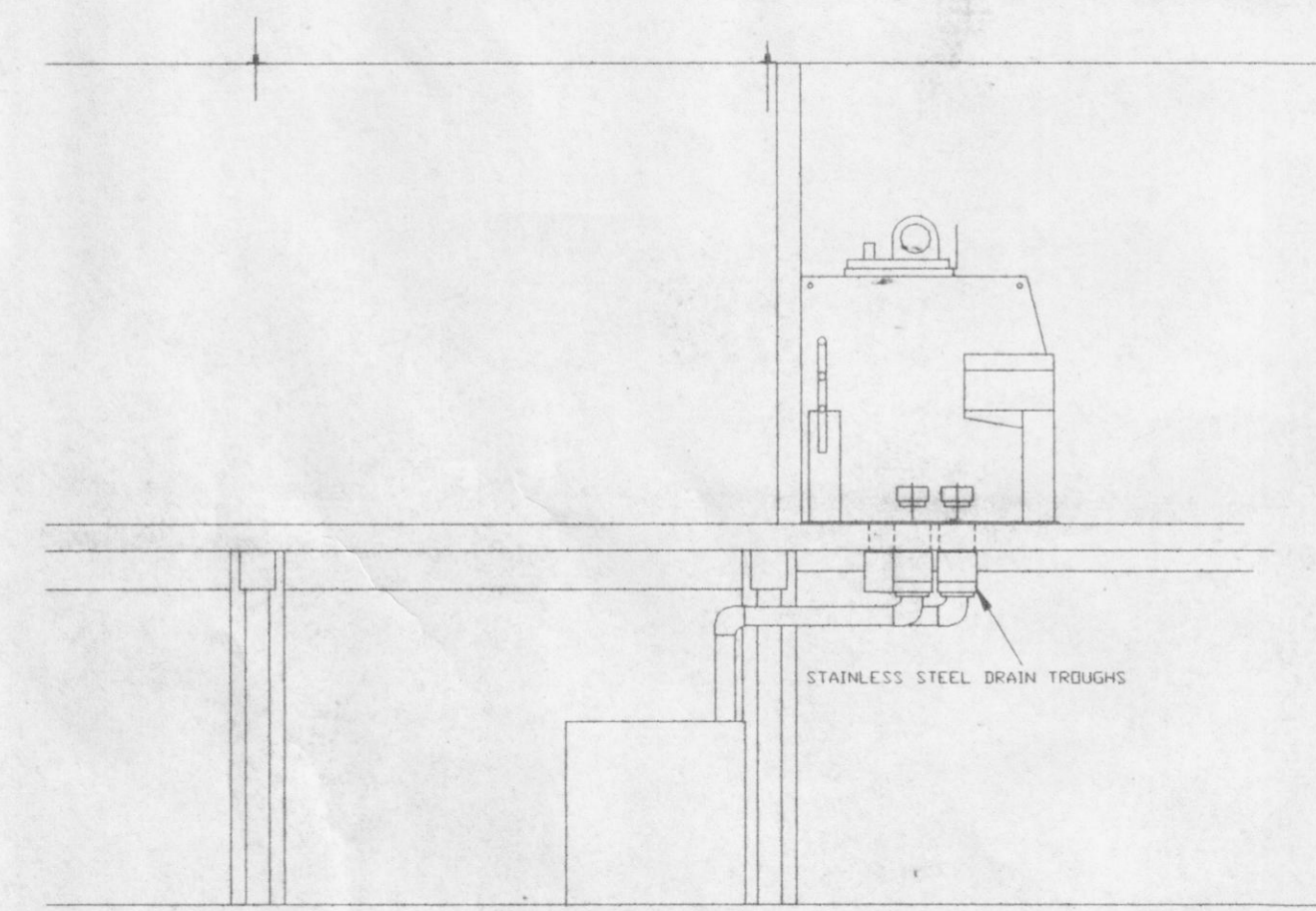
BOTTOM OF TRUSSES

13'-0"

FIRST
FLOOR LEVEL

10'-8 1/2"

BASEMENT
FLOOR LEVEL



GARDNER MACHINERY CORP. 700 NORTH SUMMIT AVENUE-CHARLOTTE, N. C.		SCALE 1/4" = 1'	PAGE OF
V. A. MEDICAL CENTER		DATE 8/15/87	REVISION
MECHANICAL ROOM SECTIONS		DRAWN BY SVG	
		APPROVED	
		DRAWING NO.	A87-1888