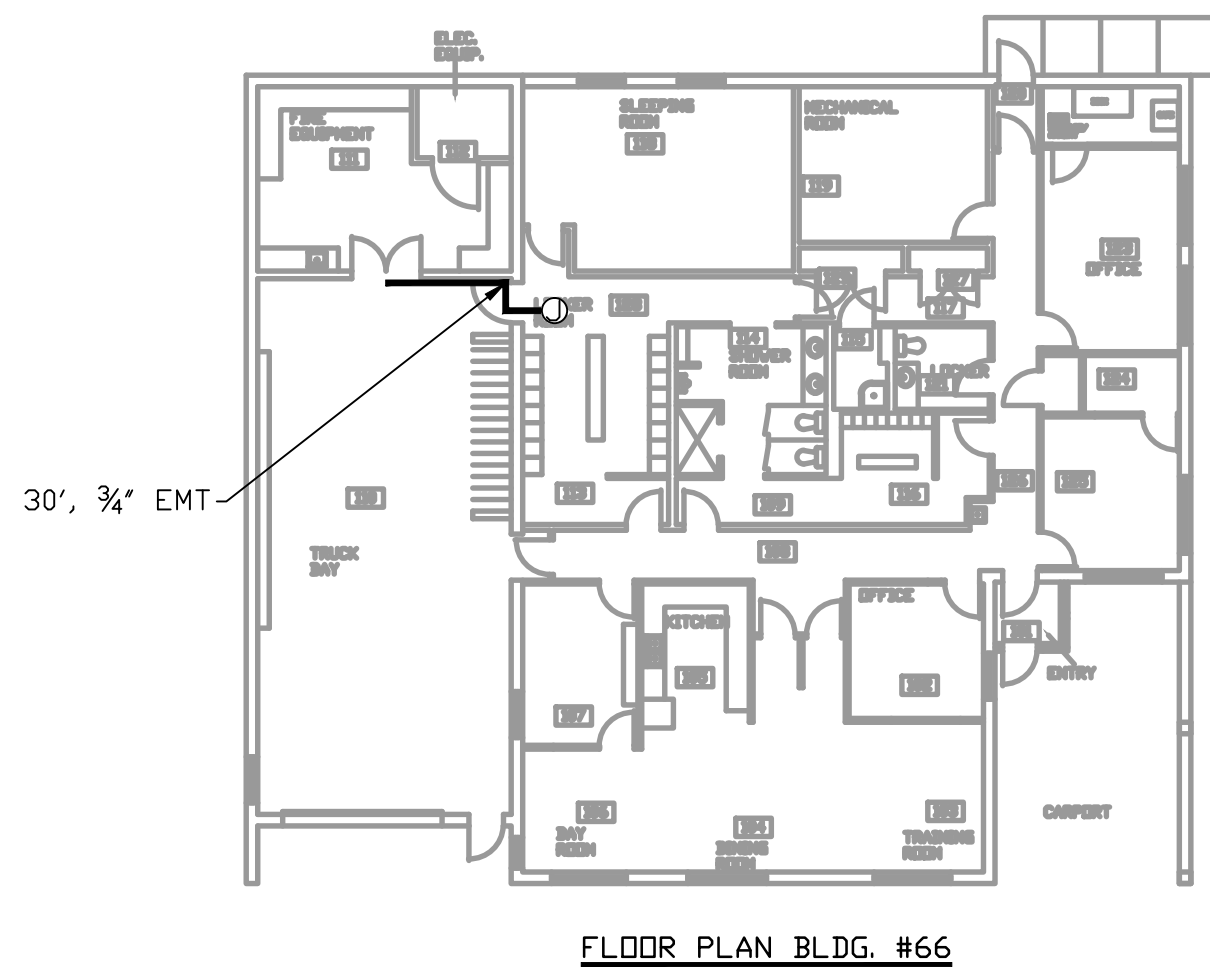
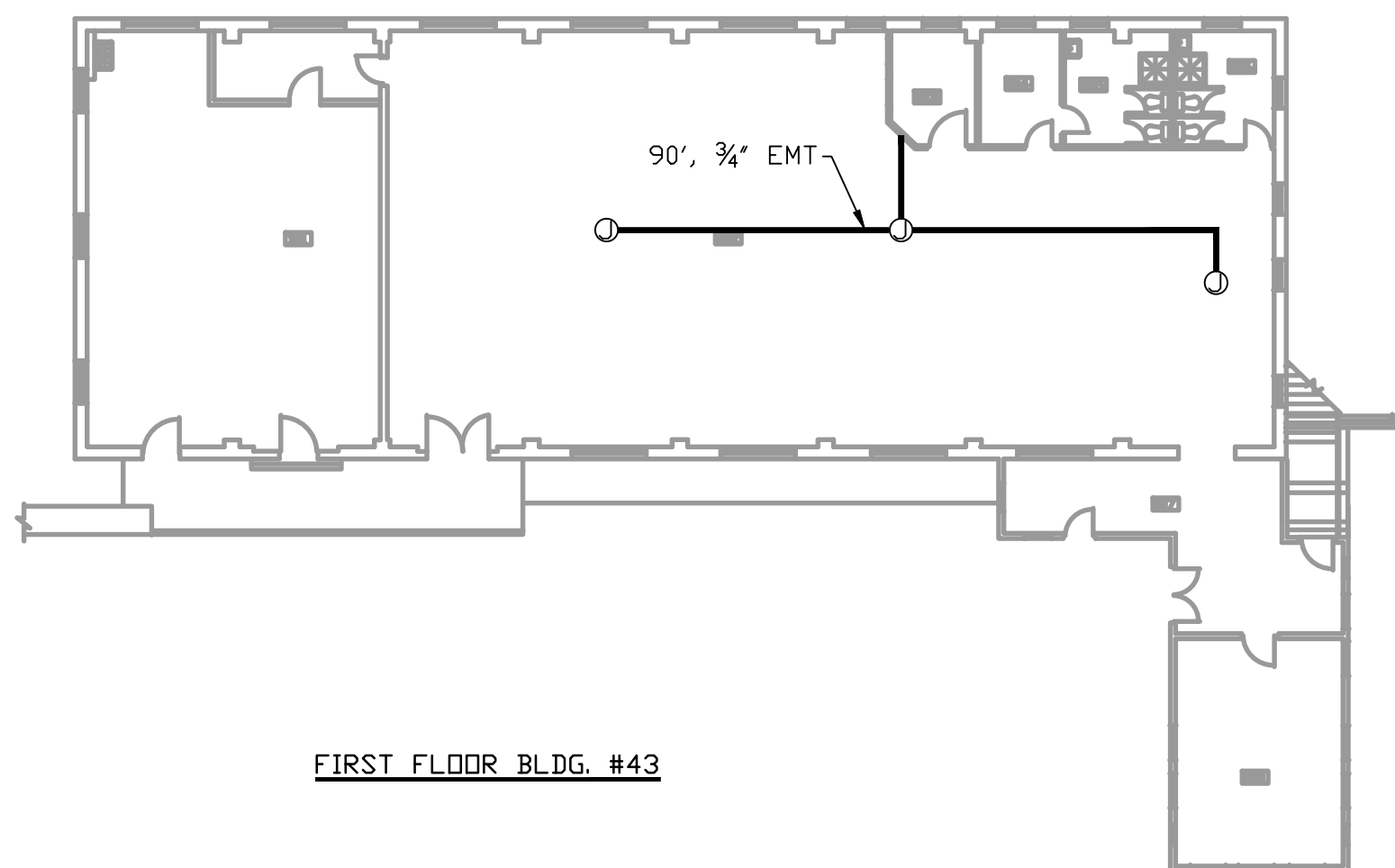


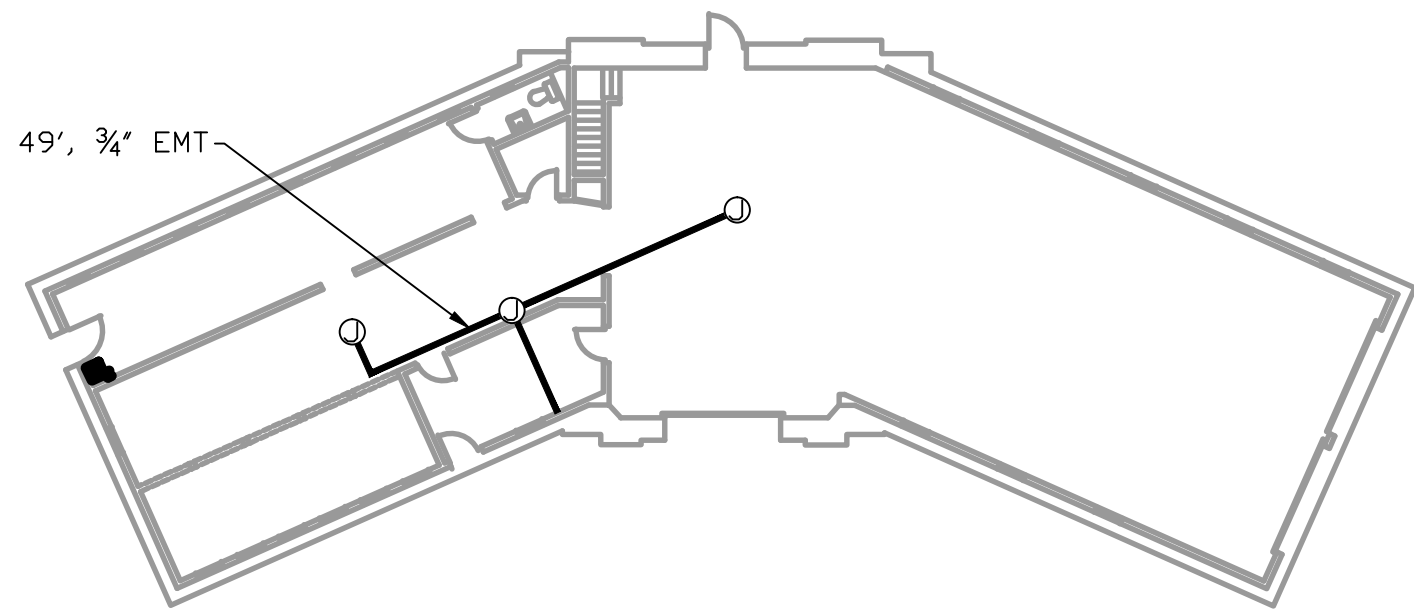
three inches = one foot
one and one half inches = one foot
one inch = one foot
three quarters inch = one foot
one half inch = one foot
three eighths inch = one foot
one quarter inch = one foot
one eighth inch = one foot



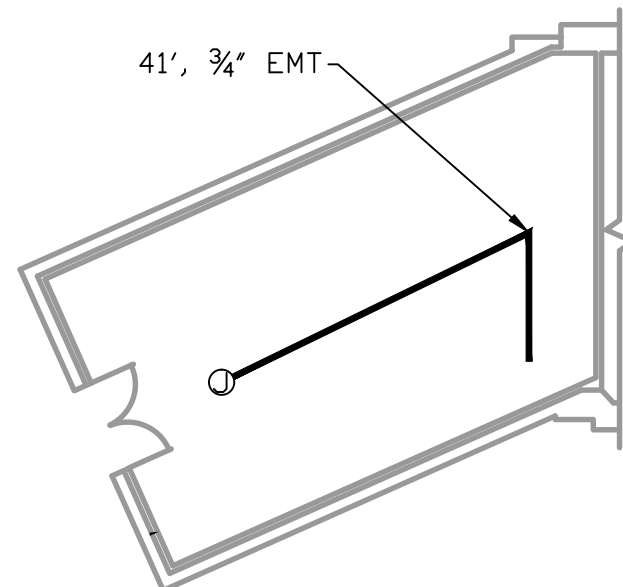
FLOOR PLAN BLDG. #66



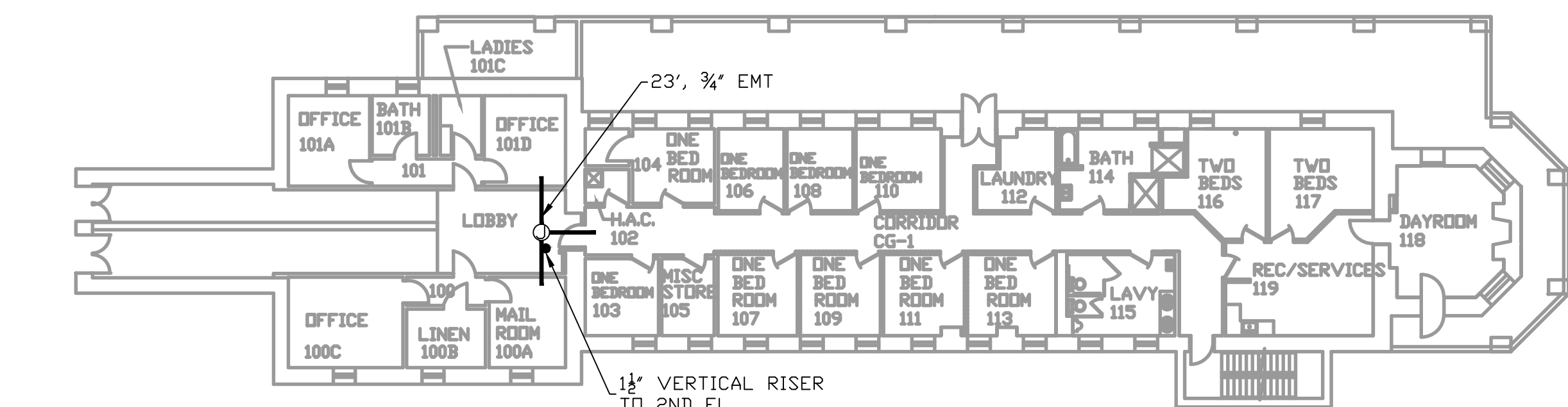
FIRST FLOOR BLDG. #43



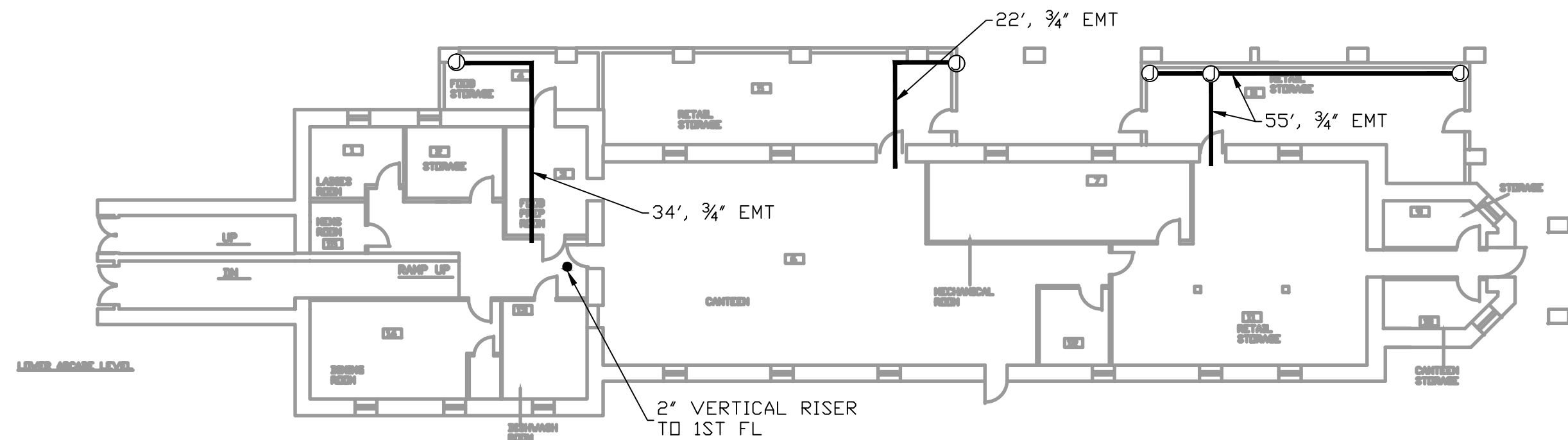
FLOOR PLAN BLDG. #17



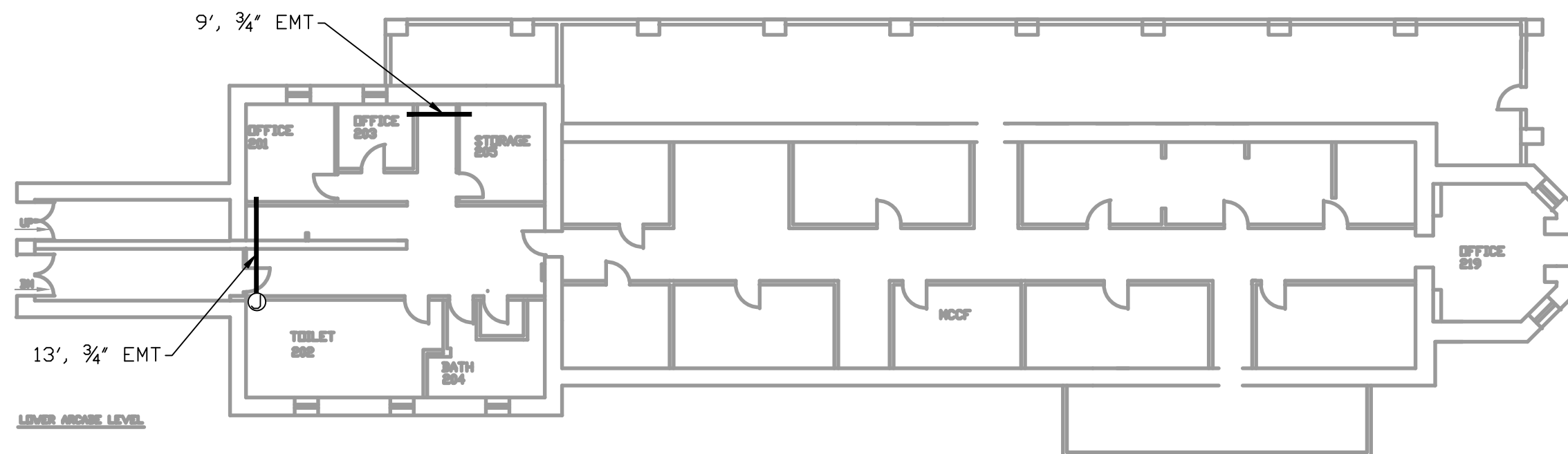
BASEMENT PLAN BLDG. #17



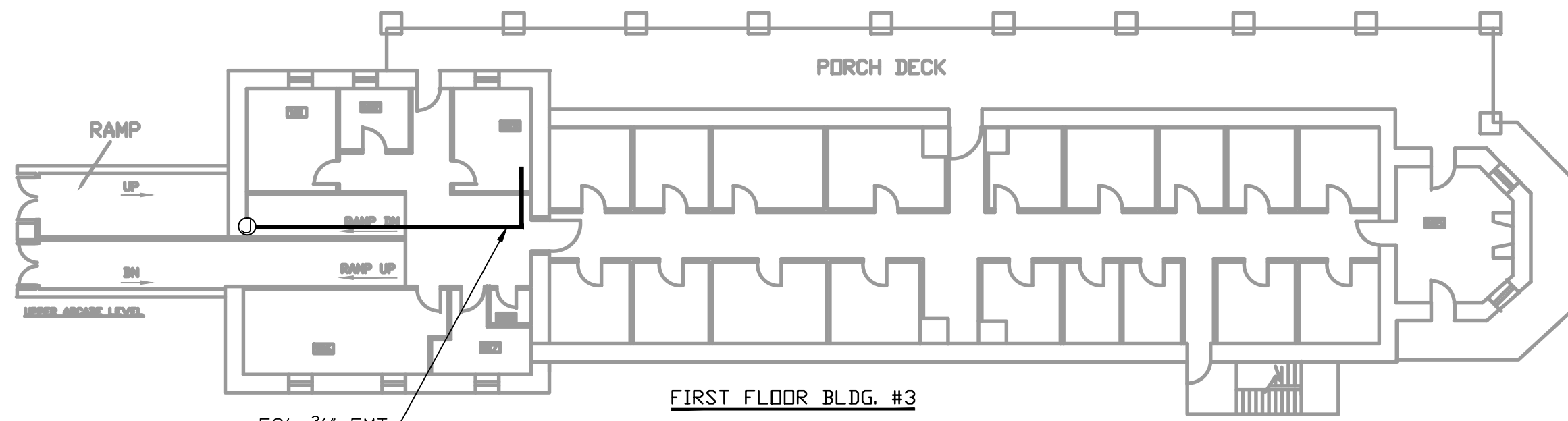
FIRST FLOOR BLDG. #5



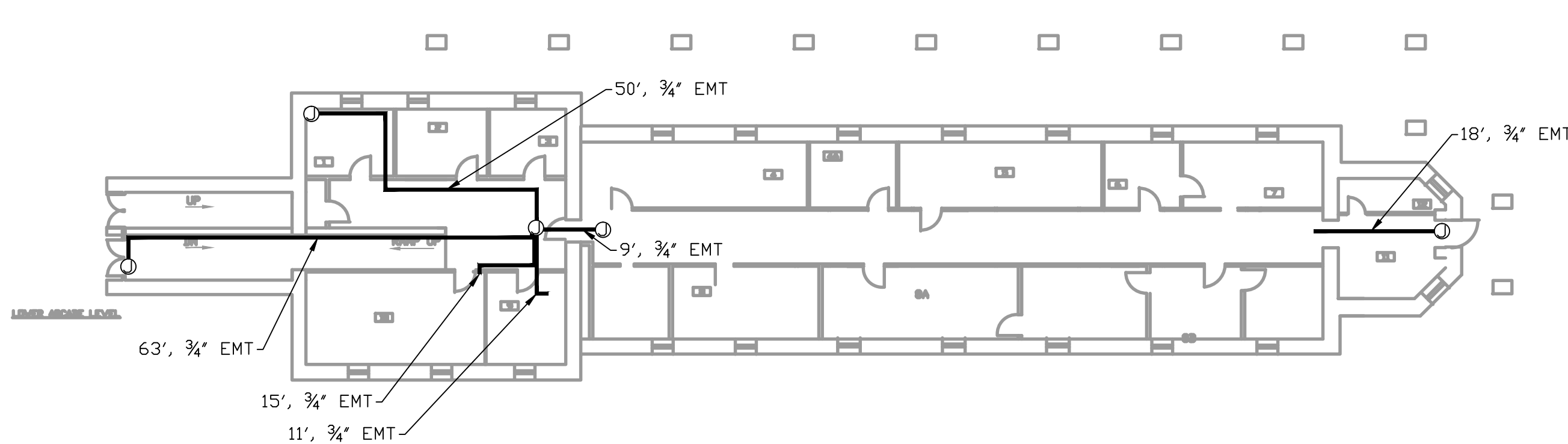
BASEMENT FLOOR BLDG. #5



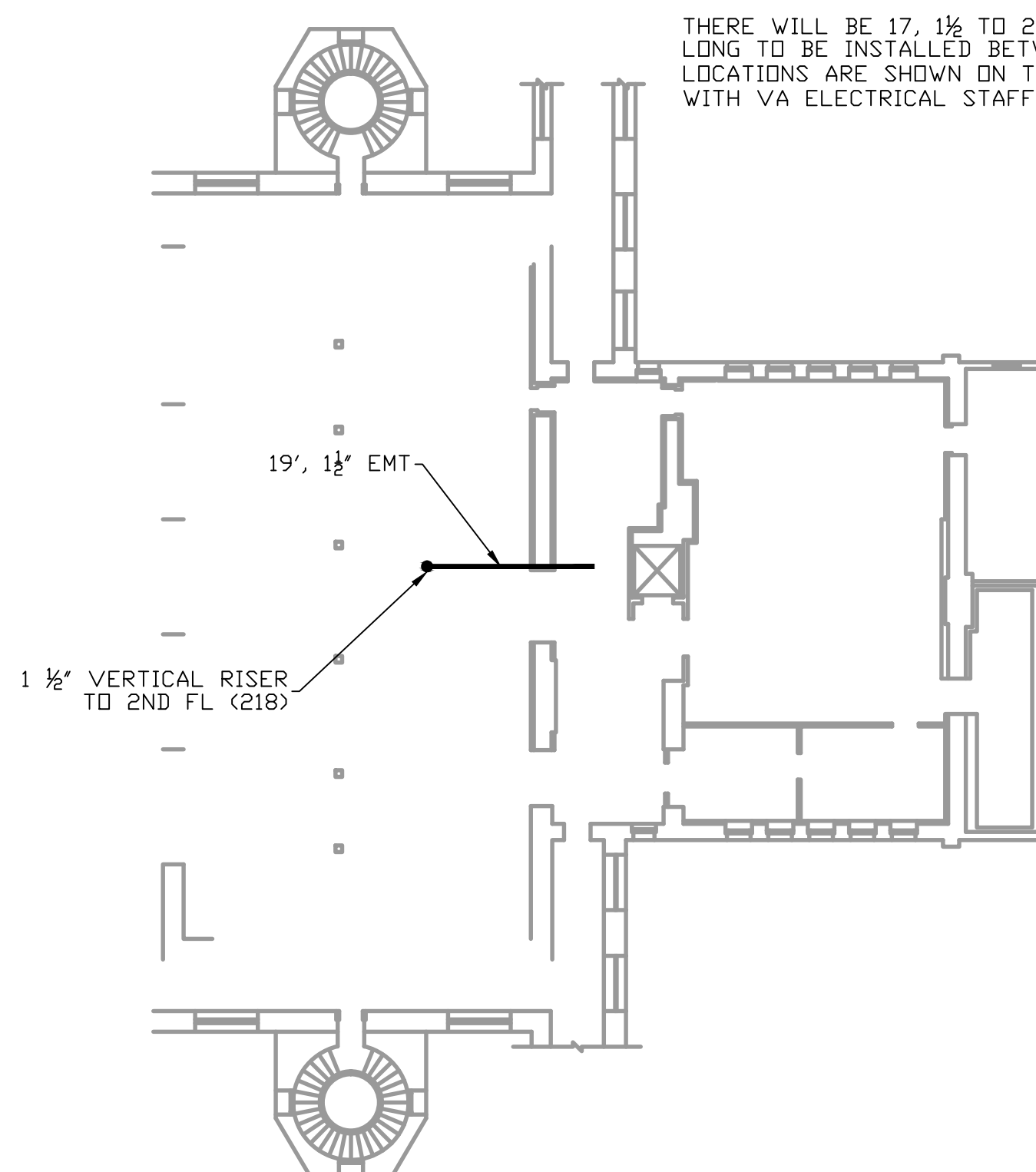
SECOND FLOOR BLDG. #3



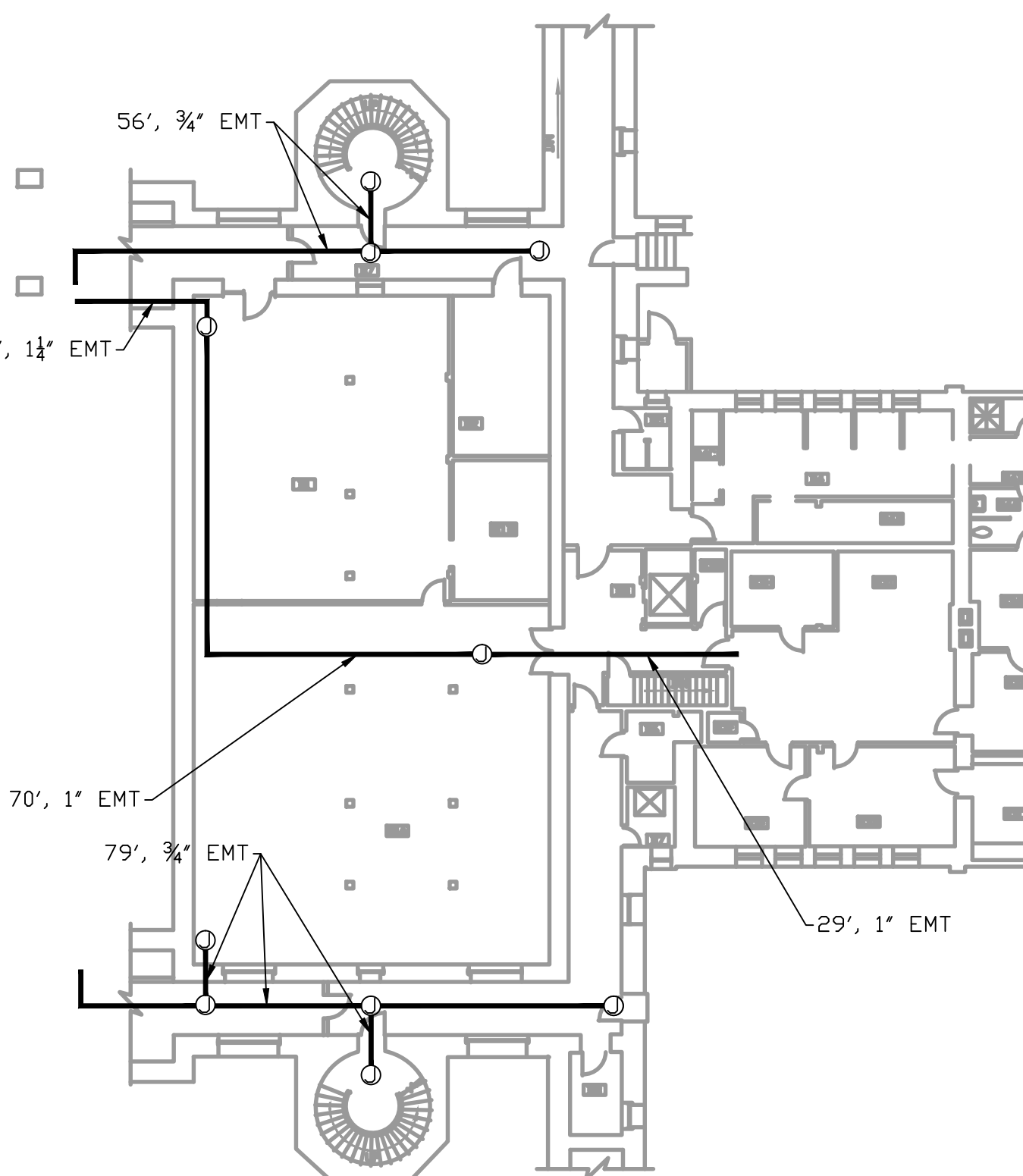
FIRST FLOOR BLDG. #3



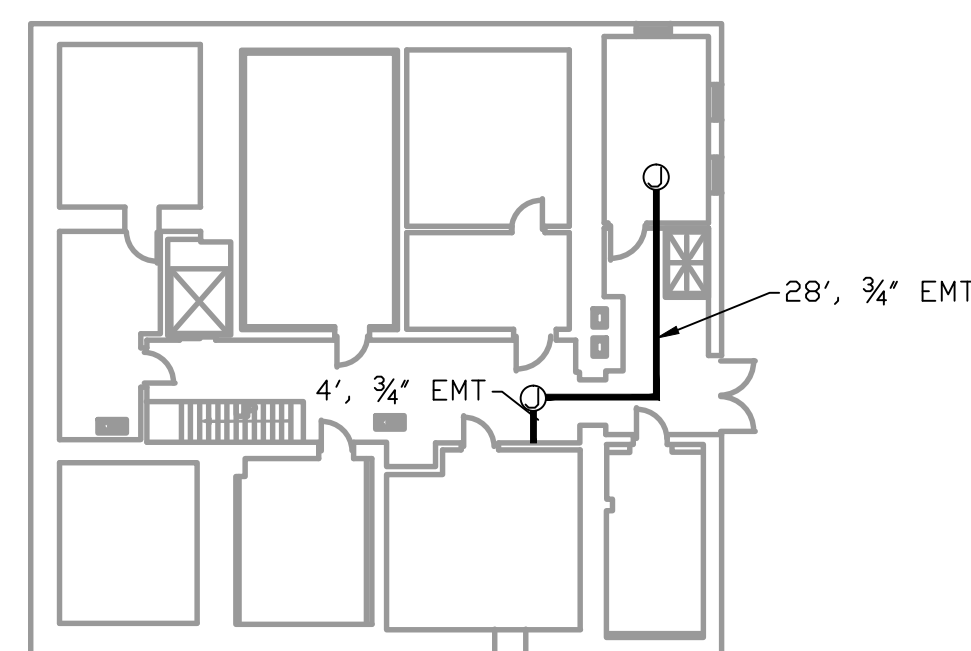
BASEMENT FLOOR BLDG. #3



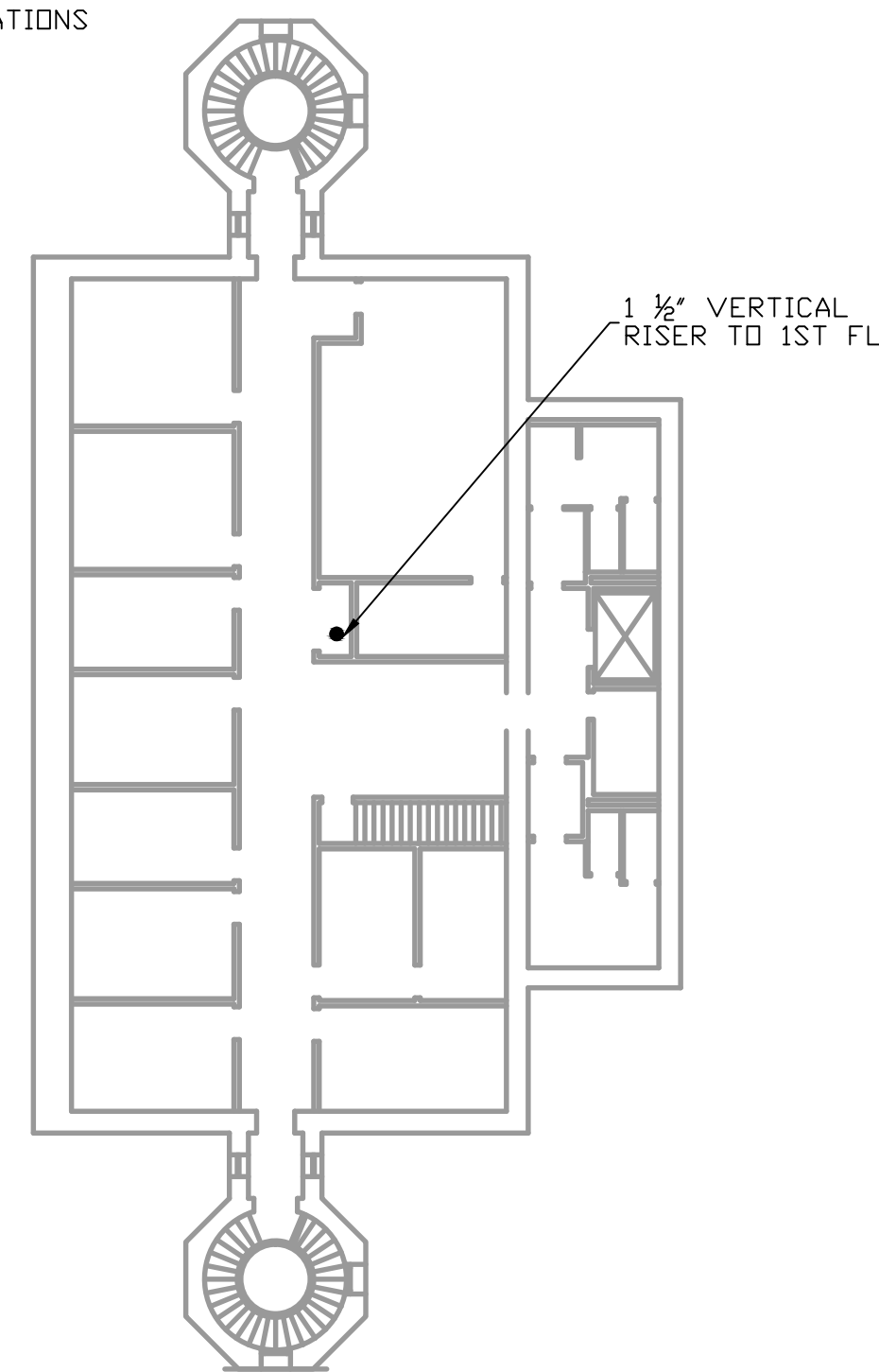
FLOOR #1 BLDG. #2



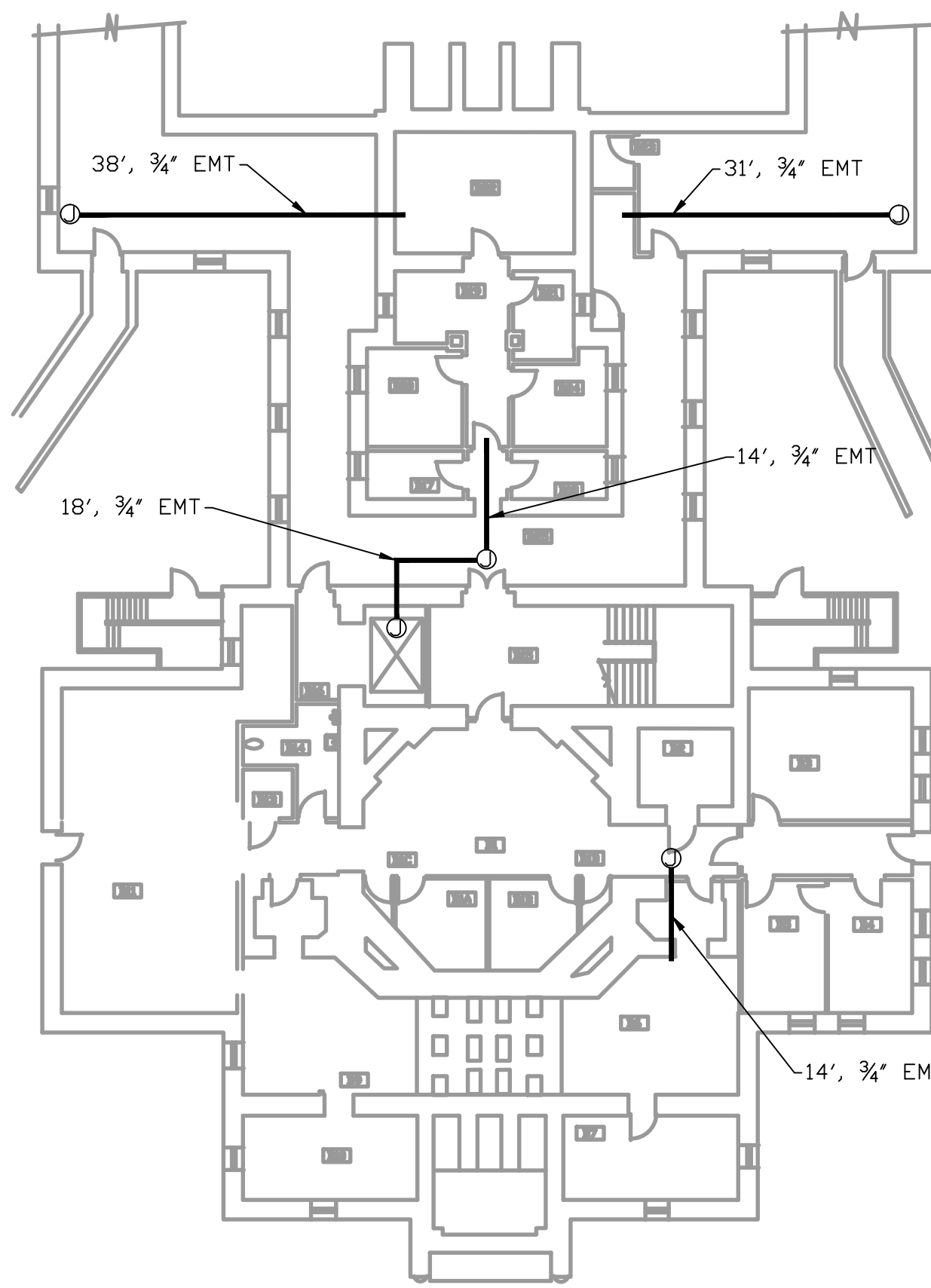
BASEMENT FLOOR BLDG. #2



SUB-BASEMENT FLOOR BLDG. #2



FLOOR #2 BLDG. #2



BASEMENT FLOOR BLDG. #1

GENERAL NOTES:

Ø DEEP 4 SQUARE ELECTRICAL JUNCTION BOX, LOCATIONS APPROXIMATE.

CONTRACTOR TO VERIFY ALL LENGTHS ON DRAWINGS.

EXACT LOCATIONS OF CONDUIT, AND BOXES TO BE VERIFIED WITH VA ELECTRICAL STAFF BEFORE PLACEMENT.

THERE WILL BE 17, 1 1/2 TO 2\"/>

Revisions	Date

CONSULTANTS:

ARCHITECT/ENGINEERS:

Drawing Title
WIRELESS
CONDUIT
LAYOUT

Approved Project Director

Scale: 1"=200'

Project Title
WIRELESS
PROJECT

Location
VA HOT_SPRINGS

Date
11-30-12

SD

Checked

Drawn
WAL

Project Number

Building Number

Drawing Number

SHT#26-1

Dwg. 1 of 2

Office of
Construction
and Facilities
Management

Department of
Veterans Affairs