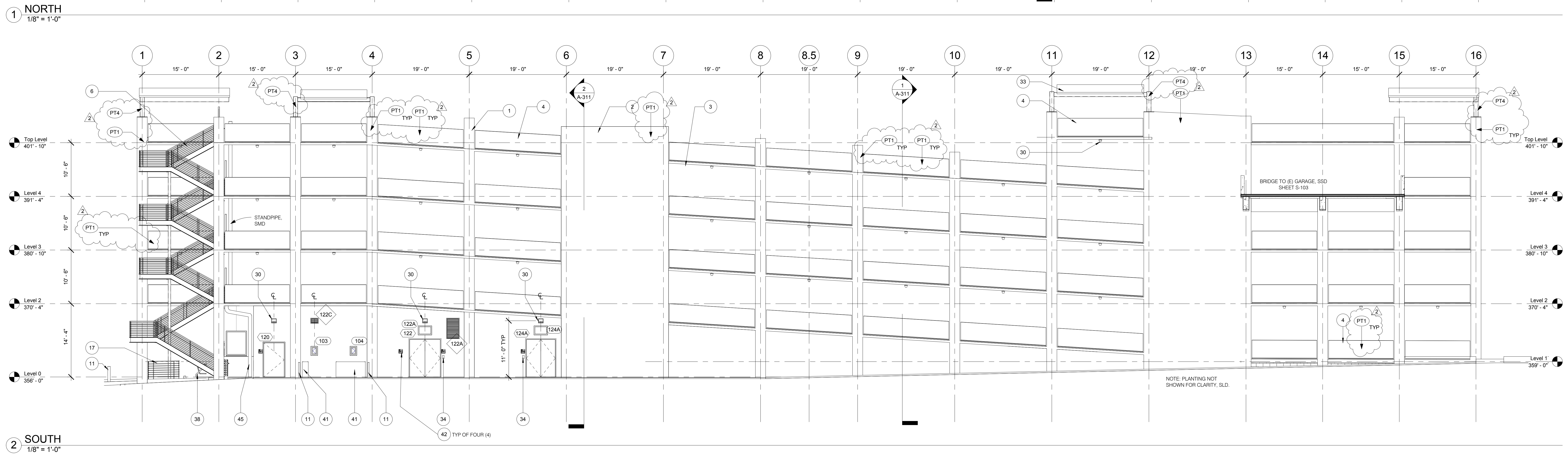


KEYED NOTES	
NOTE #	DESCRIPTION (FOR FINISH CODE SEE A11.01)
1	CIP CONC COLUMN OR BEAM, SSD
2	CIP CONC WALL, SSD
3	PT CIP CONC FLOOR, SSD
4	CIP CONC CRASH WALL
6	STL STAIRCASE ASSEMBLY BY CONTRACTOR
7	WINDOW : ALUMINUM
11	BOLLARD (SITE), SCD
17	RAIL : PIPE PFD SATIN ANNOZIDED



		CONSULTANTS:				ARCHITECT:		Drawing Title ELEVATIONS		Project Title PARKING AND EMERGENCY RESPONSE STRUCTURE		Project Number 662-611		Office of Construction and Facilities Management  Department of Veterans Affairs	
		 BSA ARCHITECTS BULL STOCKWELL ALLEN ARCHITECTURE + PLANNING 501 Folsom Street, 4th Floor San Francisco, CA 94105 415.281.4720 www.bsaarchitects.com				 WALKER PARKING CONSULTANTS 135 Main Street Suite 1030 San Francisco, CA 94105 415.644.0630 Ph 415.644.0637 Fax		Approved: Project Director Medical Center Director: LAWRENCE H. CARROLL Chief Engineer: DIRK MINNEMA		Location SFVA MEDICAL CENTER		Building Number 211			
2 Amendment 2 Revisions:		1:22.13 Date				Drawing Number A-301 Sht -29- of 120		Date 10/11/12		Checked MP@BSA		Drawn JDW@BSA			