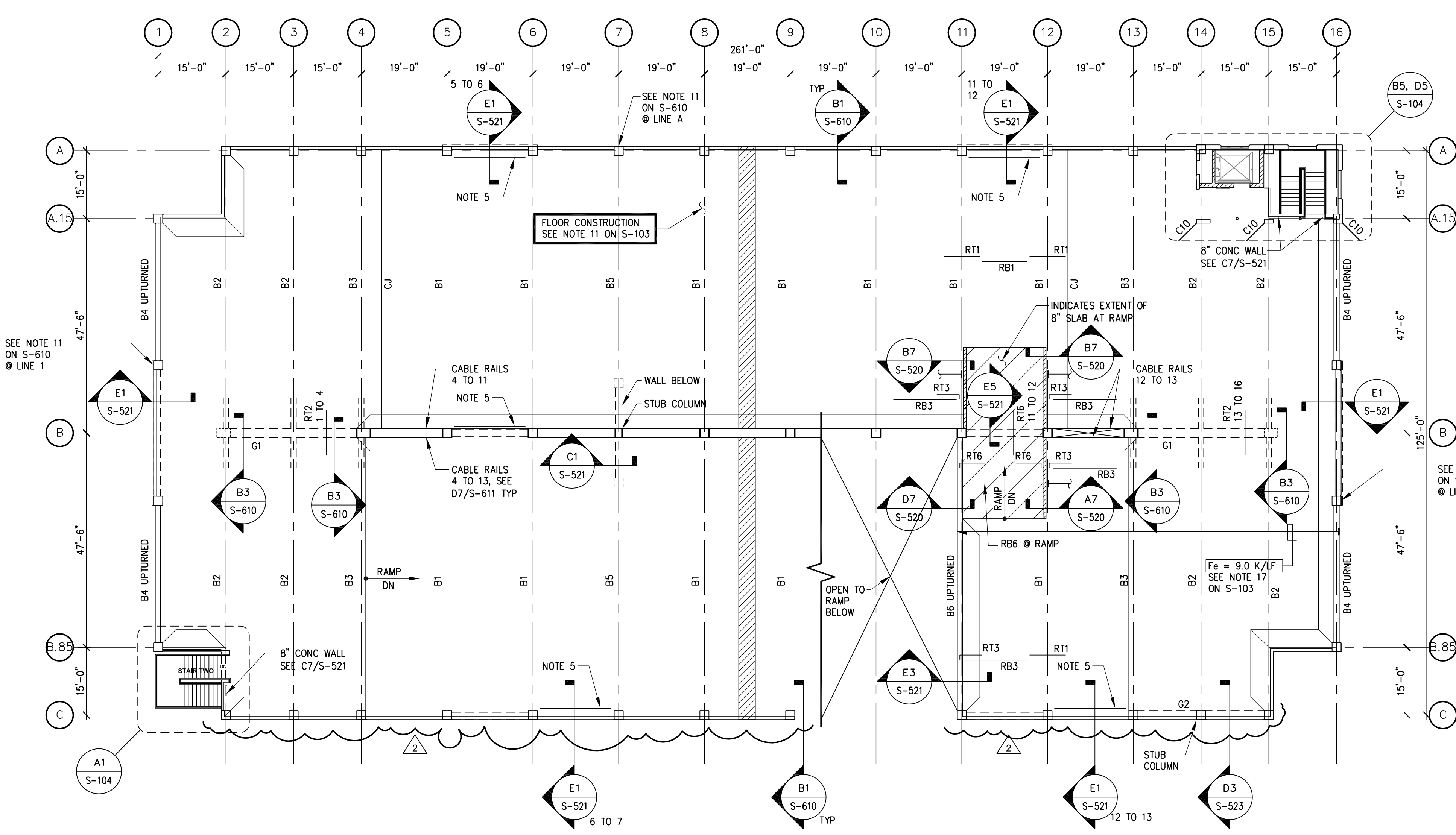
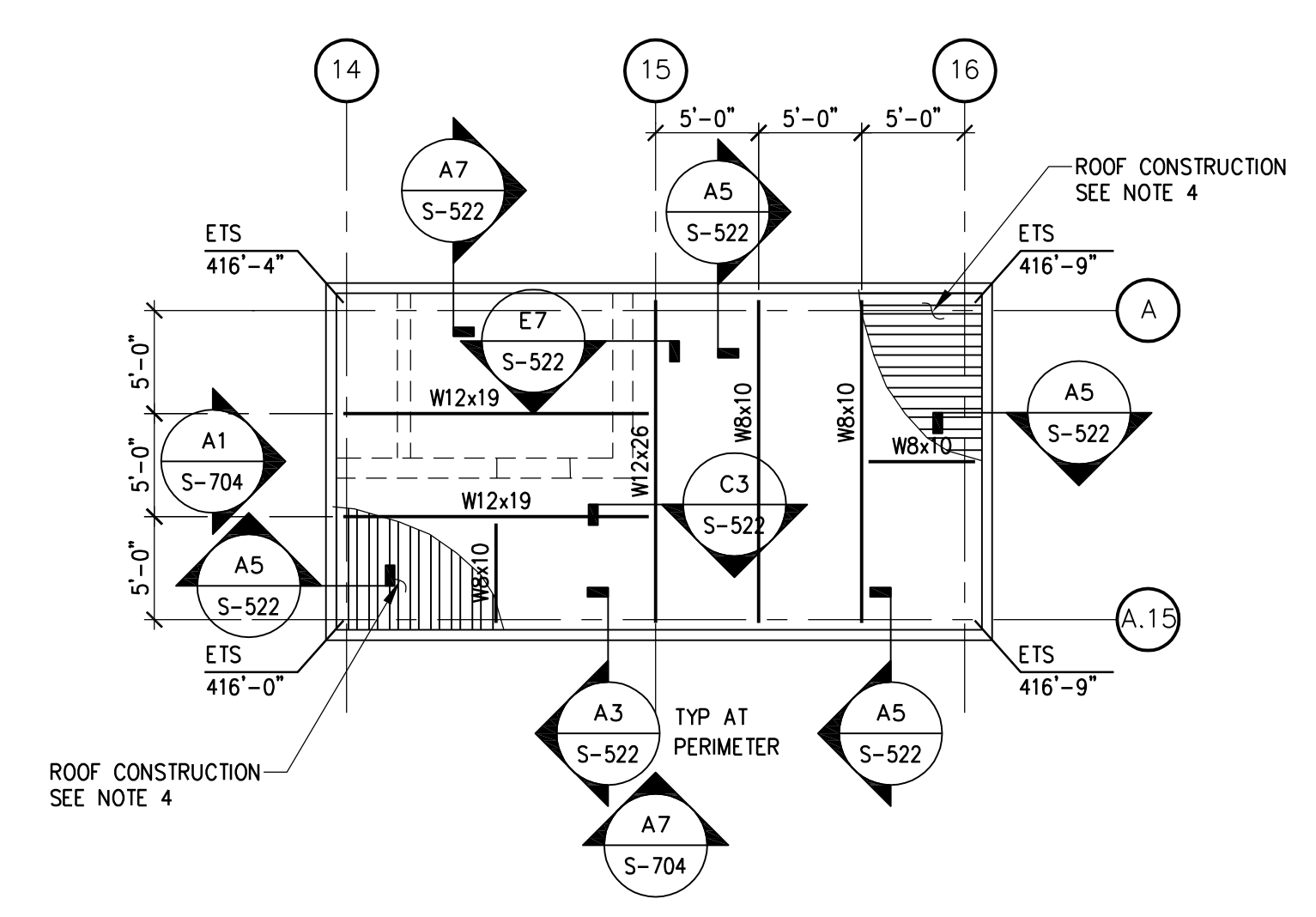
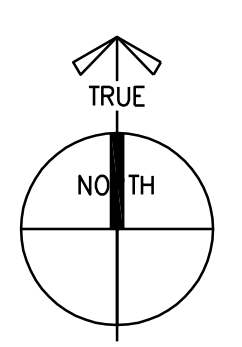


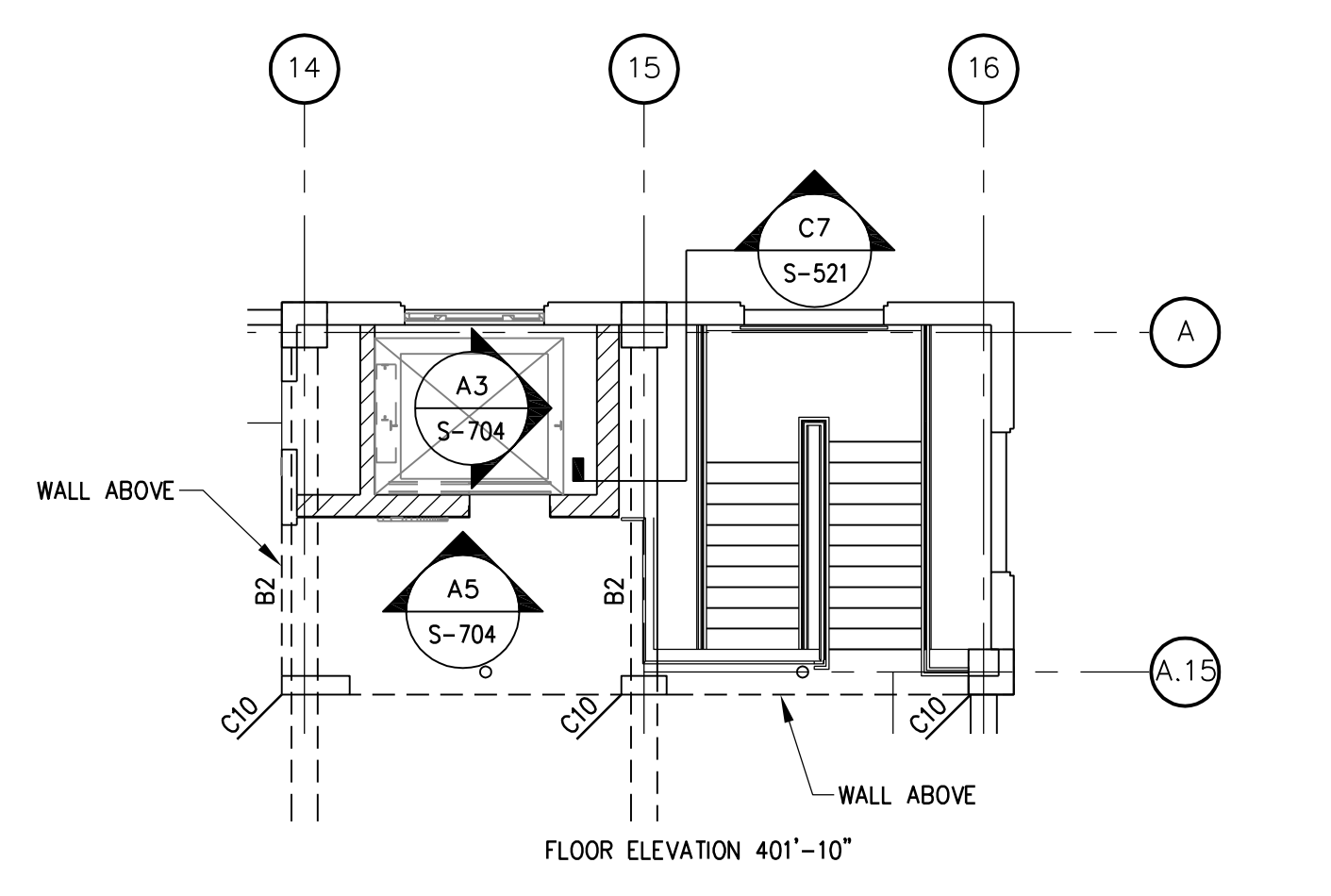
three inches = one foot
one and one half inches = one foot
one inch = one foot
three quarters inch = one foot
one half inch = one foot
three eighths inch = one foot
one quarter inch = one foot
one eighth inch = one foot
one sixteenth inch = one foot



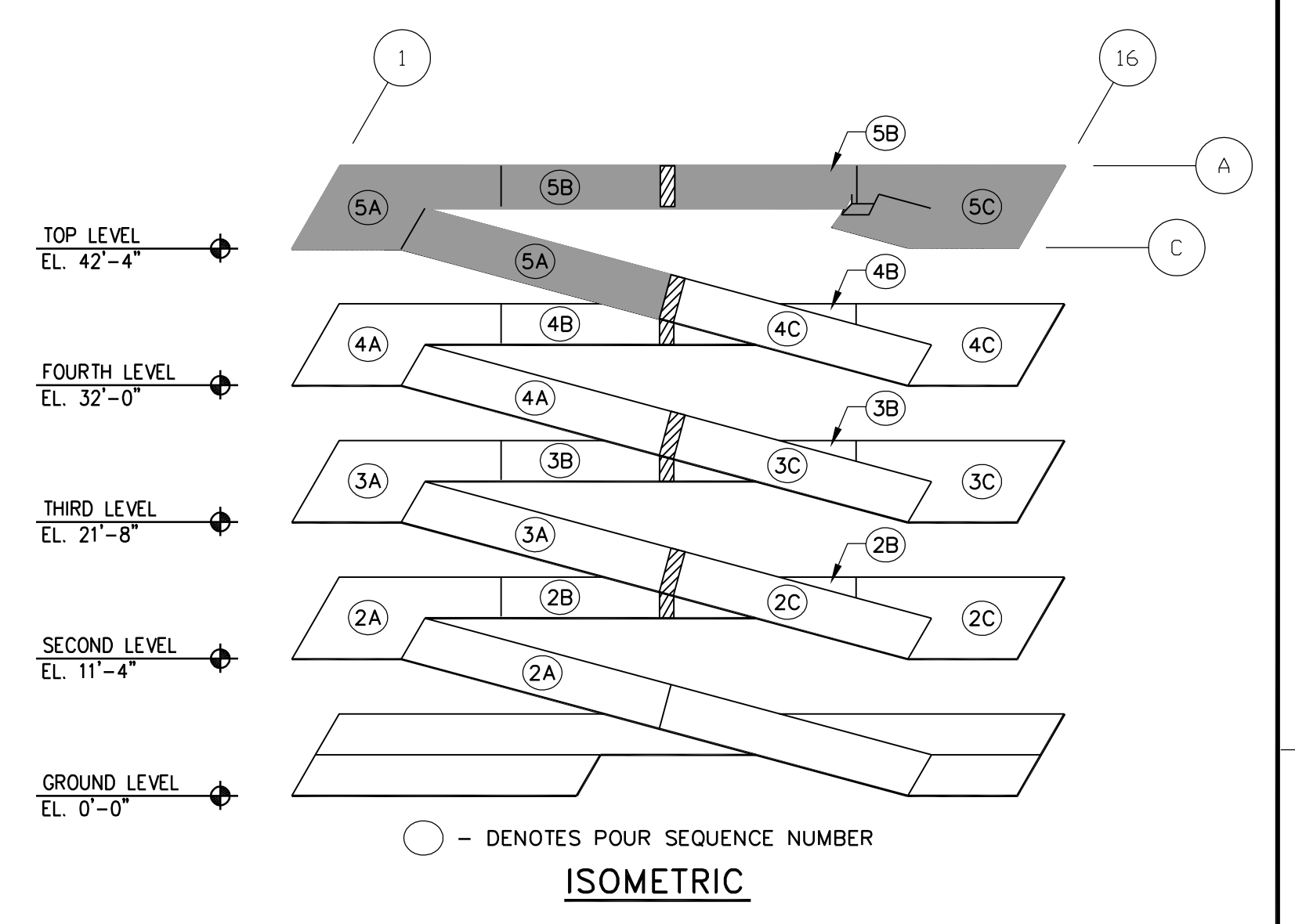
B3 TOP LEVEL PLAN



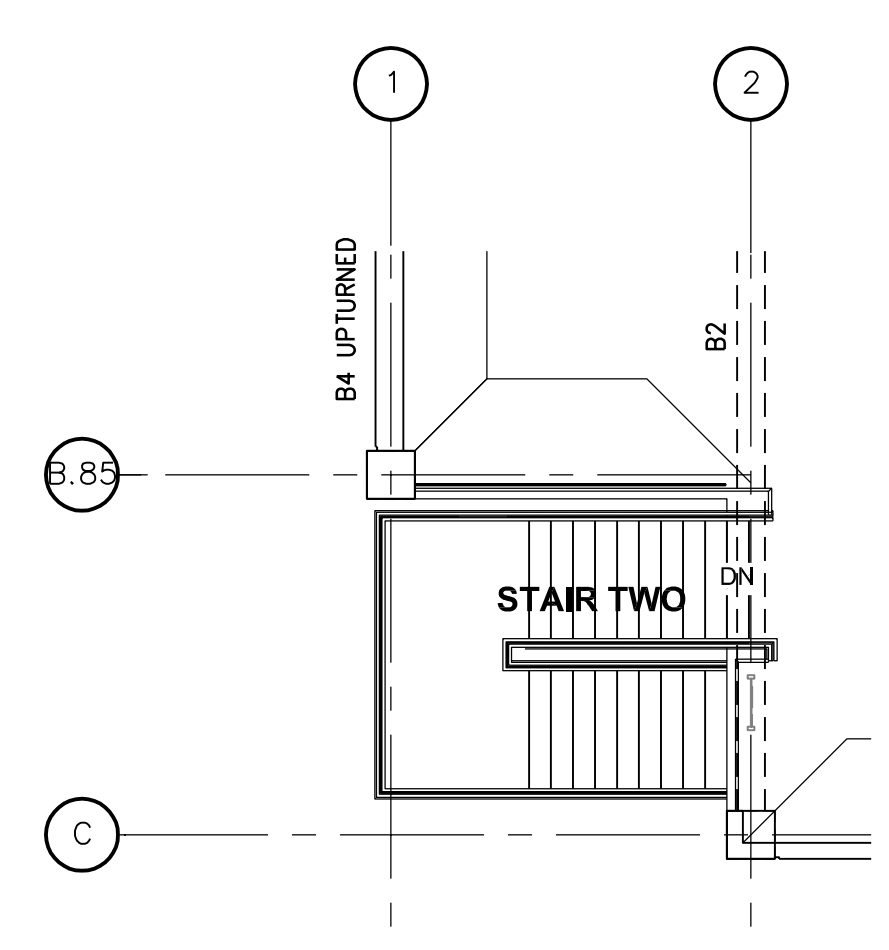
D5 ELEVATOR/STAIR ROOF FRAMING PLAN
SCALE: 1/8" = 1'-0"



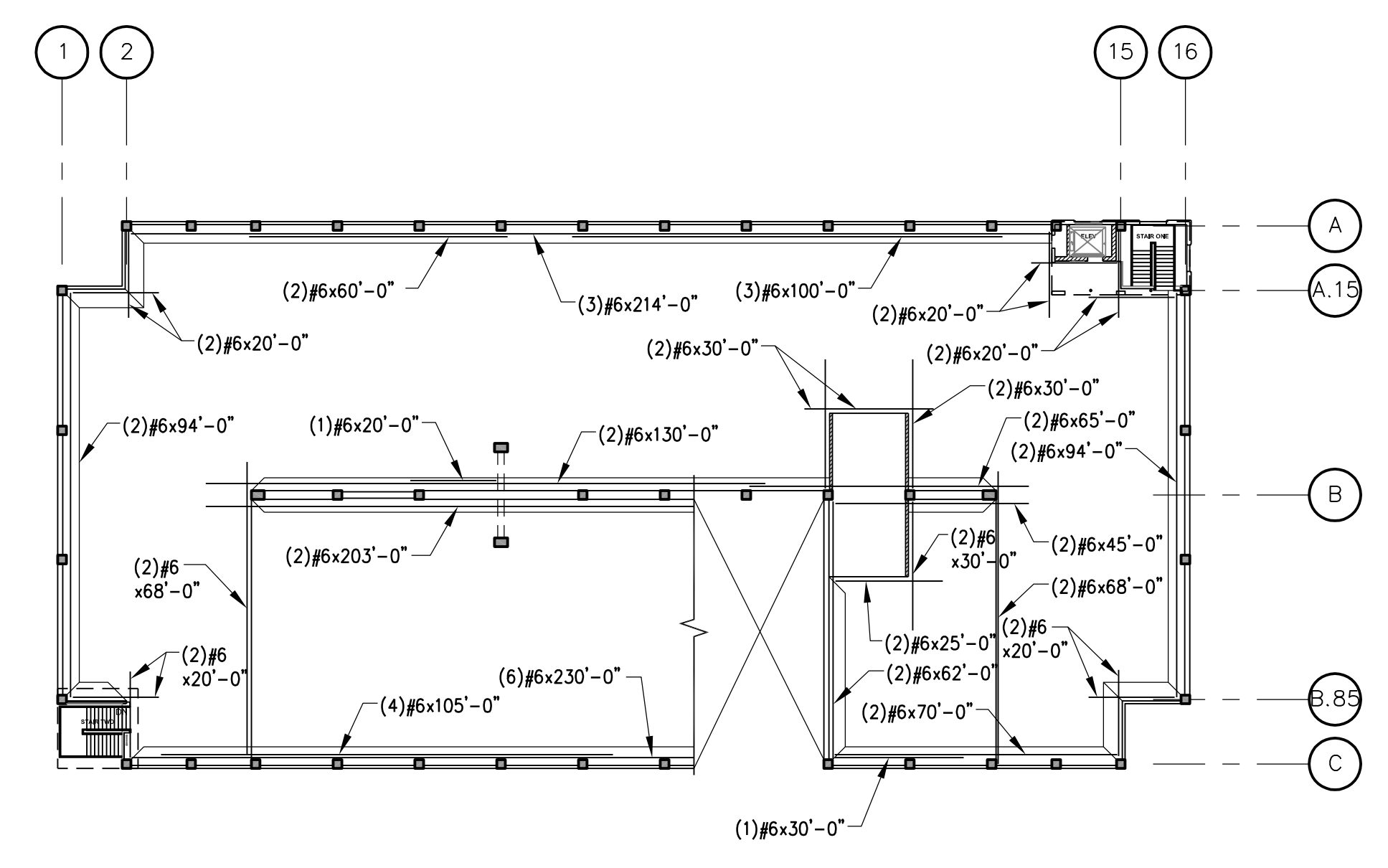
B5 STAIR AND ELEVATOR PLAN
SCALE: 1/8" = 1'-0"



- SHEET NOTES:**
- SEE SHEET S-001 FOR GENERAL NOTES.
 - VERIFY ALL DIMENSIONS WITH ARCHITECTURAL DRAWINGS.
 - ALL REINFORCING STEEL, POST-TENSIONING, SLAB THICKNESS, DETAILS, REFERENCES, NOTES, ETC. SHOWN ON THE TYPICAL LEVEL PLAN S-103 APPLY TO ALL LEVELS, UNLESS NOTED OTHERWISE.
 - a. ROOF CONSTRUCTION: BUILT-UP ROOF OVER RIGID INSULATION ON 1 1/2" VEROCTYPE HSB, GALVANIZED 36" WIDE x 22 GAUGE METAL DECK
HILTI PNEUTIK FASTENERS:
AT ALL SUPPORTS.....(5) X-EDN19/SHEET
SUPPORTS PARALLEL TO SHEETS.....PNEUTIK FASTENER X-EDN19 AT 12" ON CENTER
SIDE LAP SEAMS.....BUTTON PUNCH AT 18" ON CENTER
b. SHEETS SHALL BE CONTINUOUS OVER TWO (2) OR MORE SUPPORTS.
c. SHEETS SHALL HAVE A 2" MINIMUM BEARING LENGTH AT ALL SUPPORTS.
d. FASTENING OF METAL SHEETS TO SUPPORTS SHALL BE LOCATED IN THE RIBS AS SHOWN, FOR OVERLAPPING CONDITIONS, AT SIDE SEAMS, OR END LAPS, THE CONNECTION MUST FULLY ENGAGE BOTH DECK SHEETS AND THE SUPPORT.
e. SEE MECHANICAL DRAWINGS FOR LOCATION OF ROOF MOUNTED EQUIPMENT.
f. SEE ARCHITECTURAL DRAWINGS FOR SIZE AND LOCATION OF EQUIPMENT.
5. PROVIDE (6) #4 x SPAN LENGTH @ 16" OC.



A1 STAIR PLAN
SCALE: 1/8" = 1'-0"



A4 CHORD / DRAG STEEL PLAN

AMENDMENT 2 Revisions 01/22/13 Date	CONSULTANTS:	 KEY PLAN	ARCHITECT/ENGINEERS:			Drawing Title TOP LEVEL PLAN		Project Title PARKING AND EMERGENCY RESPONSE STRUCTURE		Project Number 662-611		Office of Construction and Facilities Management
			WALKER PARKING CONSULTANTS 135 Main Street Suite 1030 San Francisco, CA 94105 415.644.0630 Ph 415.644.0637 Fax			Approved Project Director Medical Center Director: LAWRENCE H. CARROLL Chief Engineer: DIFK MINEMA		Location SFVA MEDICAL CENTER		Building Number 211		
								Date OCTOBER 2012		Drawing Number S-104		
								Checked		Shl. 71 of 120		