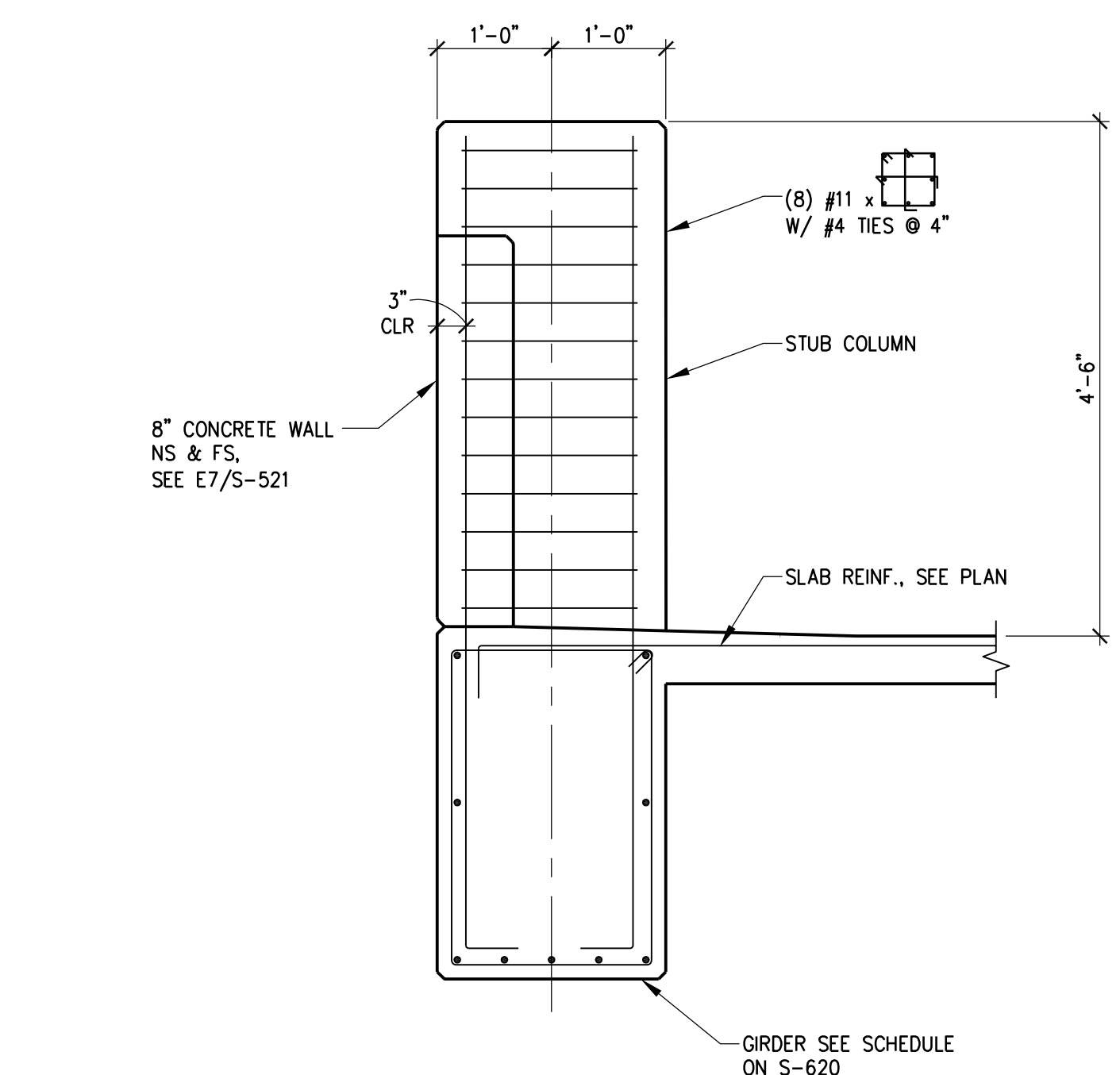
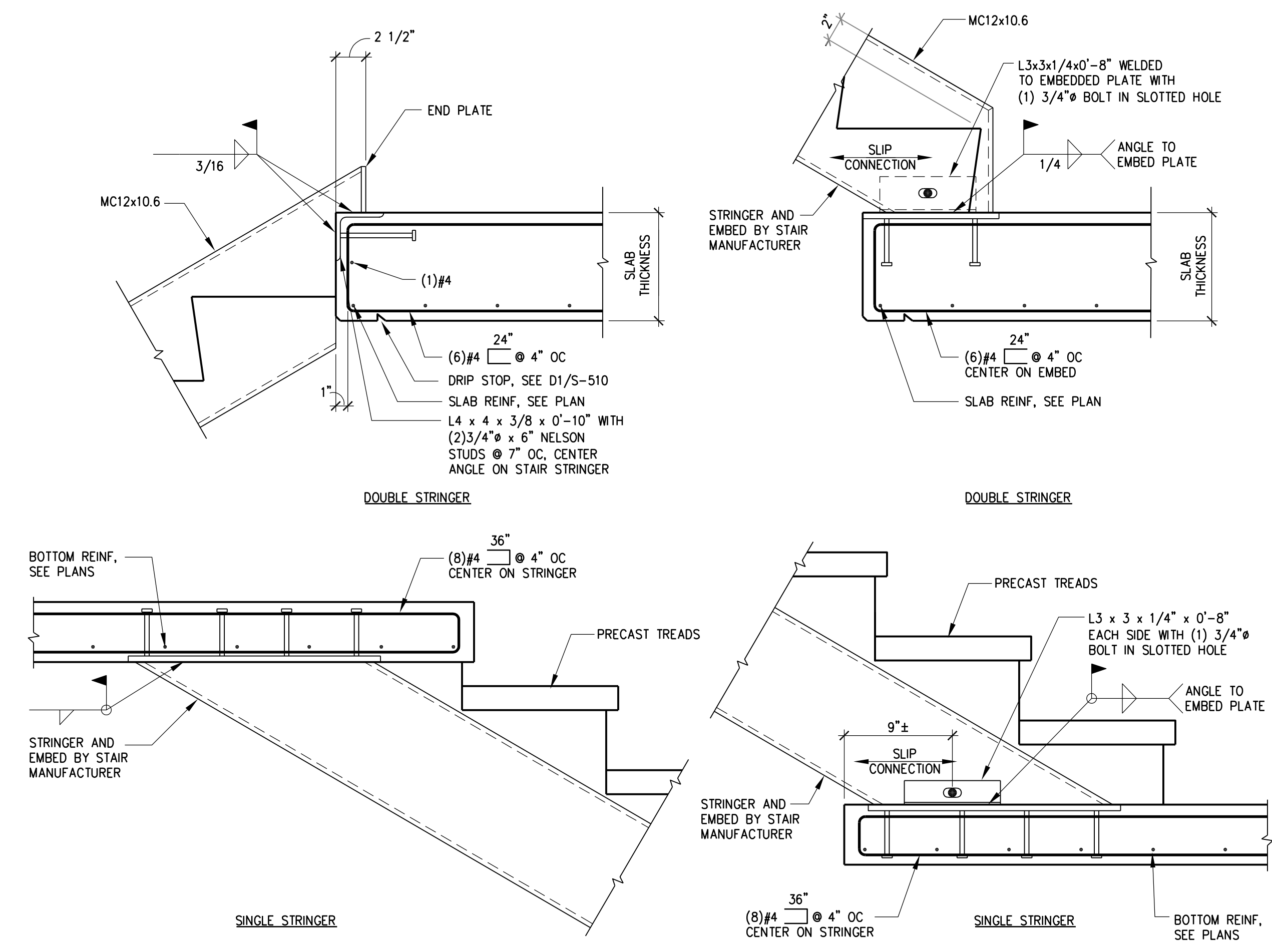


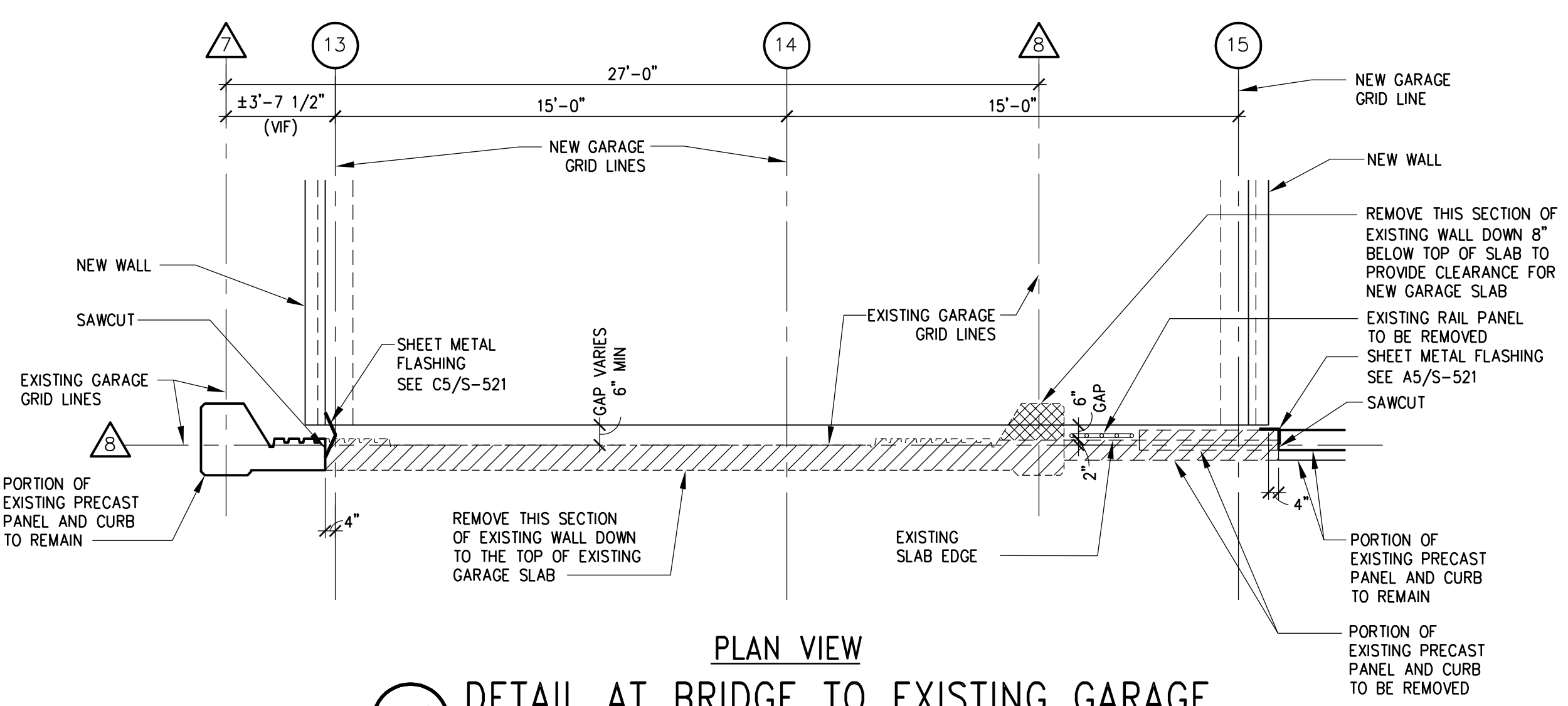
three inches = one foot
one and one half inches = one foot
one inch = one foot
three quarters inch = one foot
one half inch = one foot
three eighths inch = one foot
one quarter inch = one foot
one eighth inch = one foot
one sixteenth inch = one foot



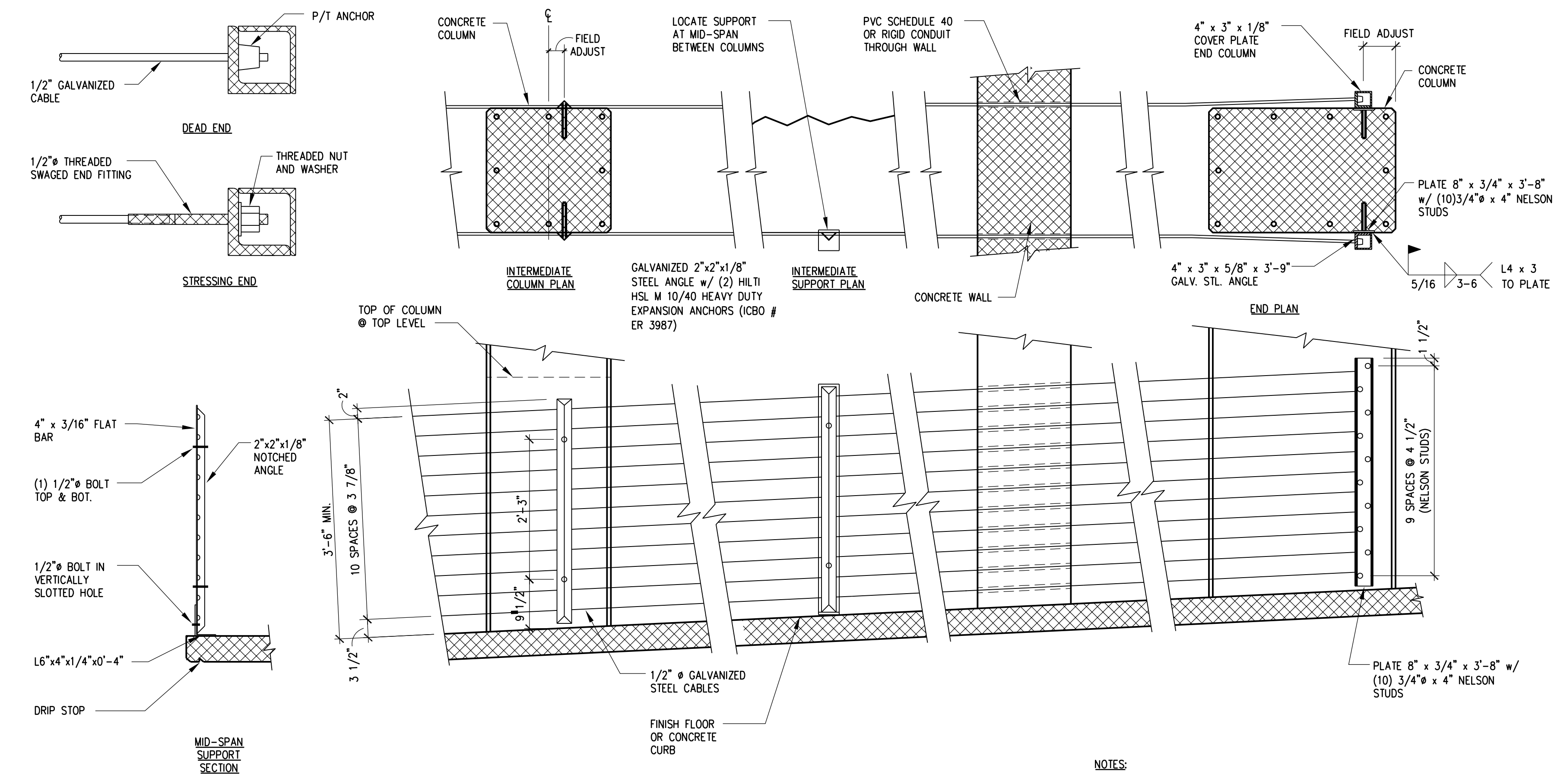
D3 STUB COLUMN DETAIL



D6 SUGGESTED STAIR CONNECTION DETAILS
(SEE NOTE VII ON S-001)



A1 DETAIL AT BRIDGE TO EXISTING GARAGE



A6 SUGGESTED CABLE RAIL DETAILS
(SEE NOTE VII ON S-001)

CONSULTANTS:			ARCHITECT/ENGINEERS:		Drawing Title STRUCTURAL DETAILS	Project Title PARKING AND EMERGENCY RESPONSE STRUCTURE	Project Number 662-611	Office of Construction and Facilities Management
AMENDMENT 2 Revisions			 WALKER PARKING CONSULTANTS 135 Main Street Suite 1030 San Francisco, CA 94105 415.644.0630 Ph 415.644.0637 Fax		Approved Project Director Medical Center Director: LAWRENCE H. CARROLL Chief Engineer: DIFK MINEMIA	Location SPVA MEDICAL CENTER Date OCTOBER 2012	Building Number 211 Drawing Number S-523 Sht. 79 of 120	