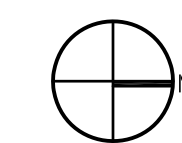


# NOTES

- 1 New 3'-9" aluminum & glass exit door with sidelite, match existing.
- 2 Existing door to remain
- 3 Replace existing raise decking with new pressure treated wood decking, match existing, typ.
- 4 New pre-engineered aluminum canopy structure, see detail 1/A-6.0 and specification section 10530. Submit shop drawings & samples to architect for review prior to start of construction, typ.
- 5 New nurses's station system furniture by Herman Miller, coordinate with Jon Lutz, Workplace Resource, 504-258-6333 for scope of work.
- 6 New 4"x4" stainless steel corner guard, see detail 6/ A-5.3, typ.
- 7 New automatic doors, match existing
- 8 Relocate existing door from Room 167 to 167A.
- 9 Replace wood decking on access panel to match existing.
- 10 New pre-engineered aluminum canopy structure with skylights to match existing aluminum canopy structure with skylights. See electrical for lighting requirements. Submit shop drawings to architect for review prior to start of construction, typ.
- 11 New nurse call stations at toilet rooms, see electrical, typ.
- 12 New vent this room. see mechanical.
- 13 New 2"x4" glass and aluminum wall
- 14 Repair and clean existing canopy, typ. replace canopy lighting with 18 outdoor lighting fixtures, typ. see electrical.
- 15 Provide power for new VA provided identification sign. See electrical.
- 16 New breakroom counter with sink, typ.
- 17 New location and outlet for vending machine. see electrical.
- 18 New wall counter and door as indicated, power outlet and data required, see electrical.
- 19 Nurse notification light, see electrical
- 20 Existing defibrillator to remain
- 21 At removed HVAC equipment, patch both sides of wall to appear new. match existing adjacent construction, see electrical.
- 22 Full sized refrigerator, typ. See electrical for power requirements.
- 23 Repair, patch and paint stucco and brick finishes as to appear new, match architect's sample, typ.
- 24 Replace existing faucets with new faucets. see plumbing, typ.
- 25 Replace existing shower head with new standard handheld shower head.
- 26 New card reader at door indicated, see electrical.
- 27 New lockers by owner.
- 28 At existing cabinets and counters, remove existing plastic laminate surfaces. Relaminate surfaces with plastic laminate to match architects sample, typ.
- 29 New furniture by owner.
- 30 Replace all existing handrails & crashguards, see detail 9/A-5.3, typ.
- 31 New handrail and crashguard, see detail
- 32 New exam room casework and sink
- 33 Bathrooms, rest rooms and utility areas getting ceramic tile should have the existing sheet rock completely removed and new moisture resistant gypsum board installed prior to wall tile installation (4ft height all around, 8ft for showers).
- 34 Provide new sink to match existing. Provide new faucet, typ.



1  
A-2.0  
Floor Plan  
scale: 1/8" = 1'-0"

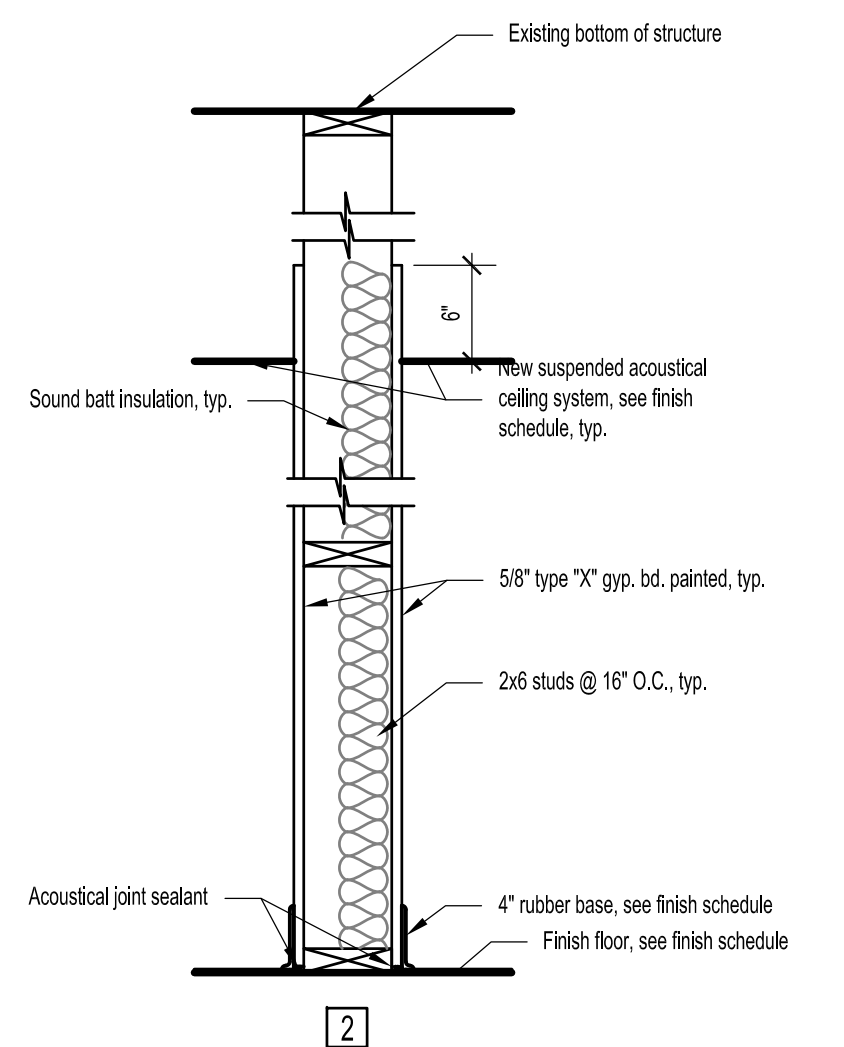
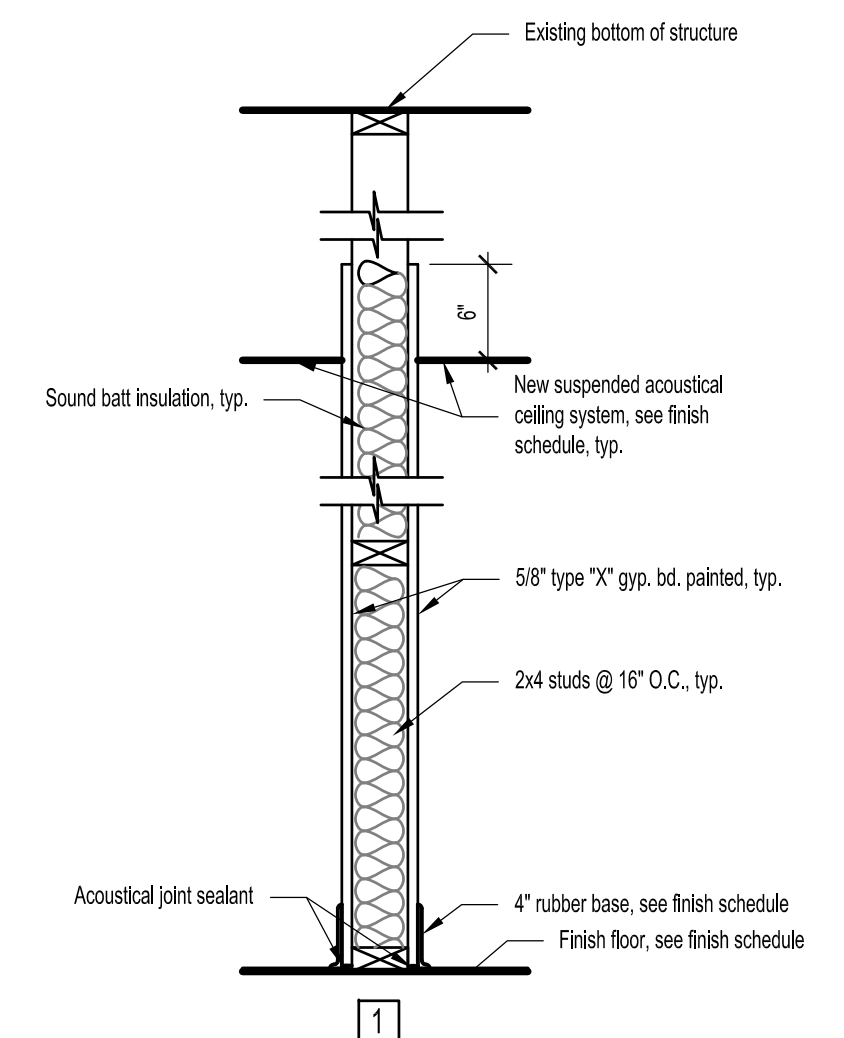
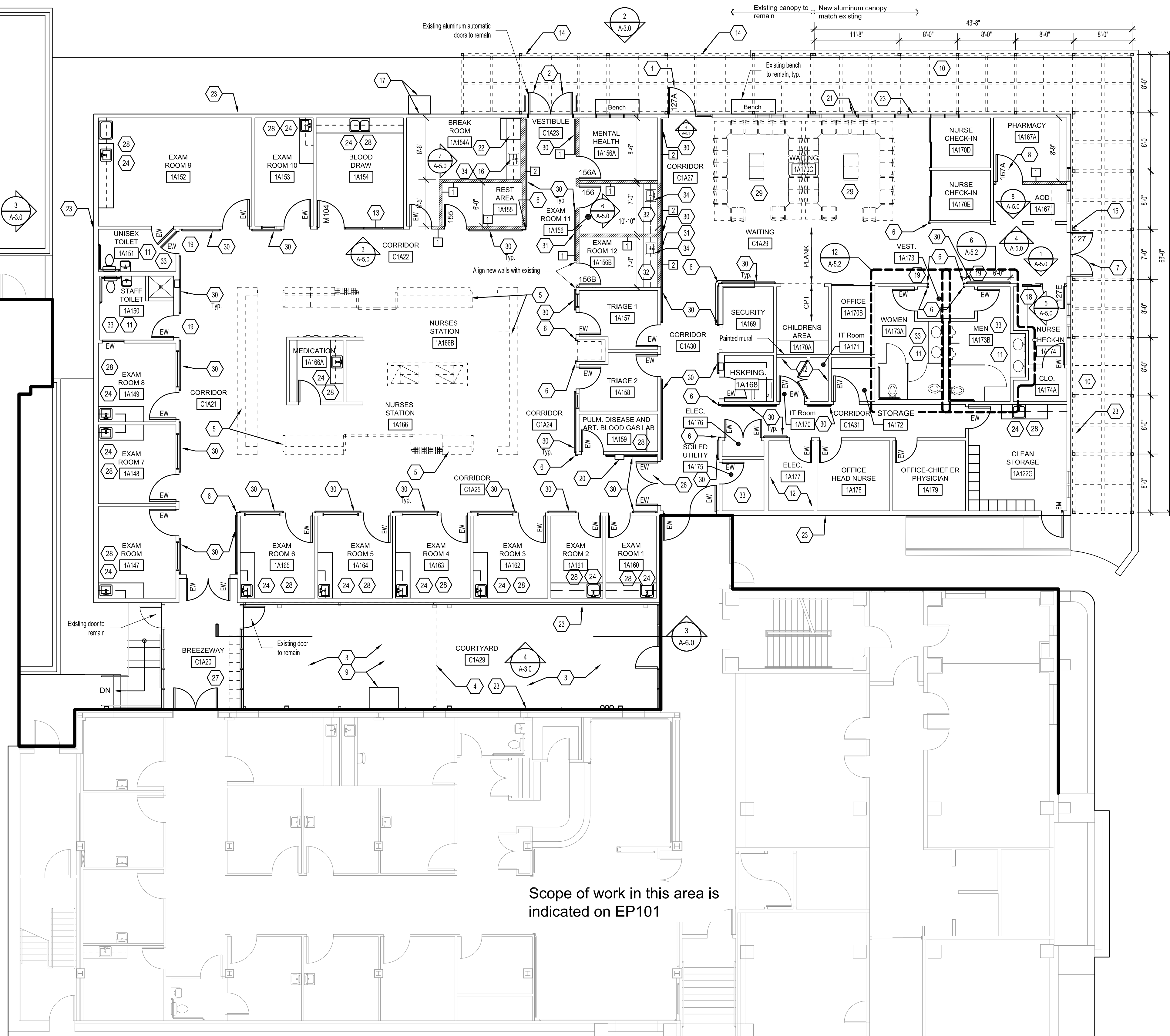
Scope of work in this area is indicated on EP101

## LEGEND

- Fixtures to remain, replace faucet, see plumbing, typ.
- Remove fixture, see plumbing, typ.
- Doors and frames to remain
- Remove door and frame
- Glazing to remain
- Remove glazing, typ.
- Existing wall to remain
- New wall
- New handrail and crash guard, see note 30 below
- Existing Wood Door, typ. Remove existing door stop and add new door stop at every door. See door schedule / A-6.1
- Existing Metal Door, typ. Remove existing door stop and add new door stop at every door. See door schedule / A-6.1
- Door Type as Scheduled, Remove existing door stop and add new door stop at every door. See door schedule / A-6.1

2  
A-2.0  
New Partition Type 1  
scale: 1" = 1'-0"

3  
A-2.0  
New Partition Type 2  
scale: 1" = 1'-0"



Revisions		
No.	Date	Remarks

**Hernandez Consulting**  
ALBERT ARCHITECTURE

**JBHM**  
ARCHITECTS, P.A.

**Allen&Hoshall**  
engineering since 1915

Approved:	
Title	Signature

Drawing Title	
Floor Plan	
Approved: Service Engineer	
Approved: Service Director	

Project Title	
Southeast VA Health Care System (SLVHCS) A&E Design Urgent Care	
Building Number	Checked
Location	Drawn S. Gonzalez
1601 Perdido Street, New Orleans, LA	

Date
January 18, 2013
Project No.
VA256-C-0231
Drawing No.
A-2.0
Dwg. 4 of 12

