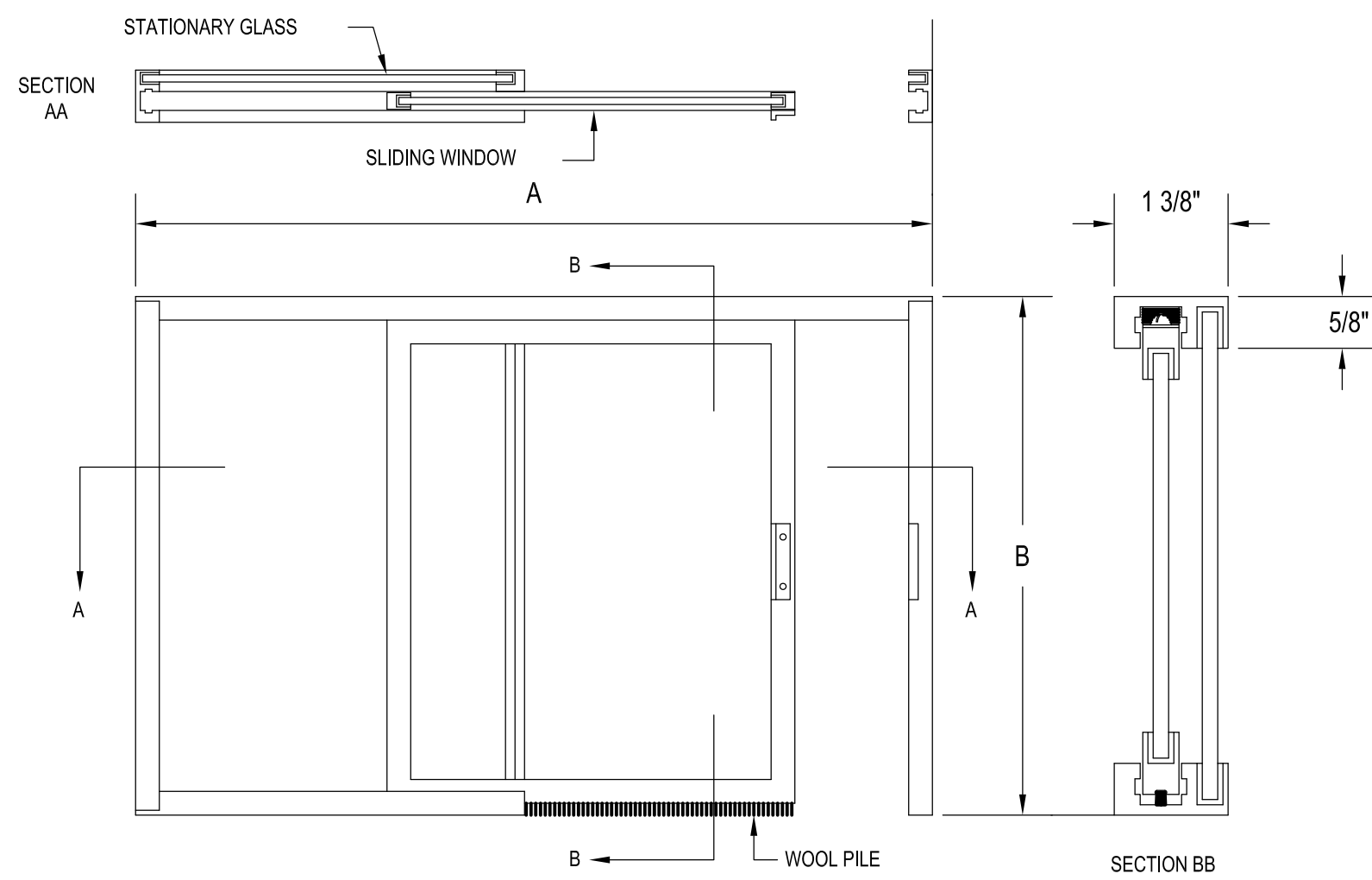


6 Wall Protection Detail  
A-5.2 scale: 1 1/2" = 1'



7 Sliding Window Details  
A-5.2 scale: Not to Scale



REMOVE EXISTING PLASTIC LAMINATE SURFACES AT UPPER CABINETS, AND REPLACE WITH NEW PLASTIC LAMINATE, MATCH ARCHITECT'S SAMPLE, TYP.

EXISTING HARDWARE TO REMAIN, TYP.

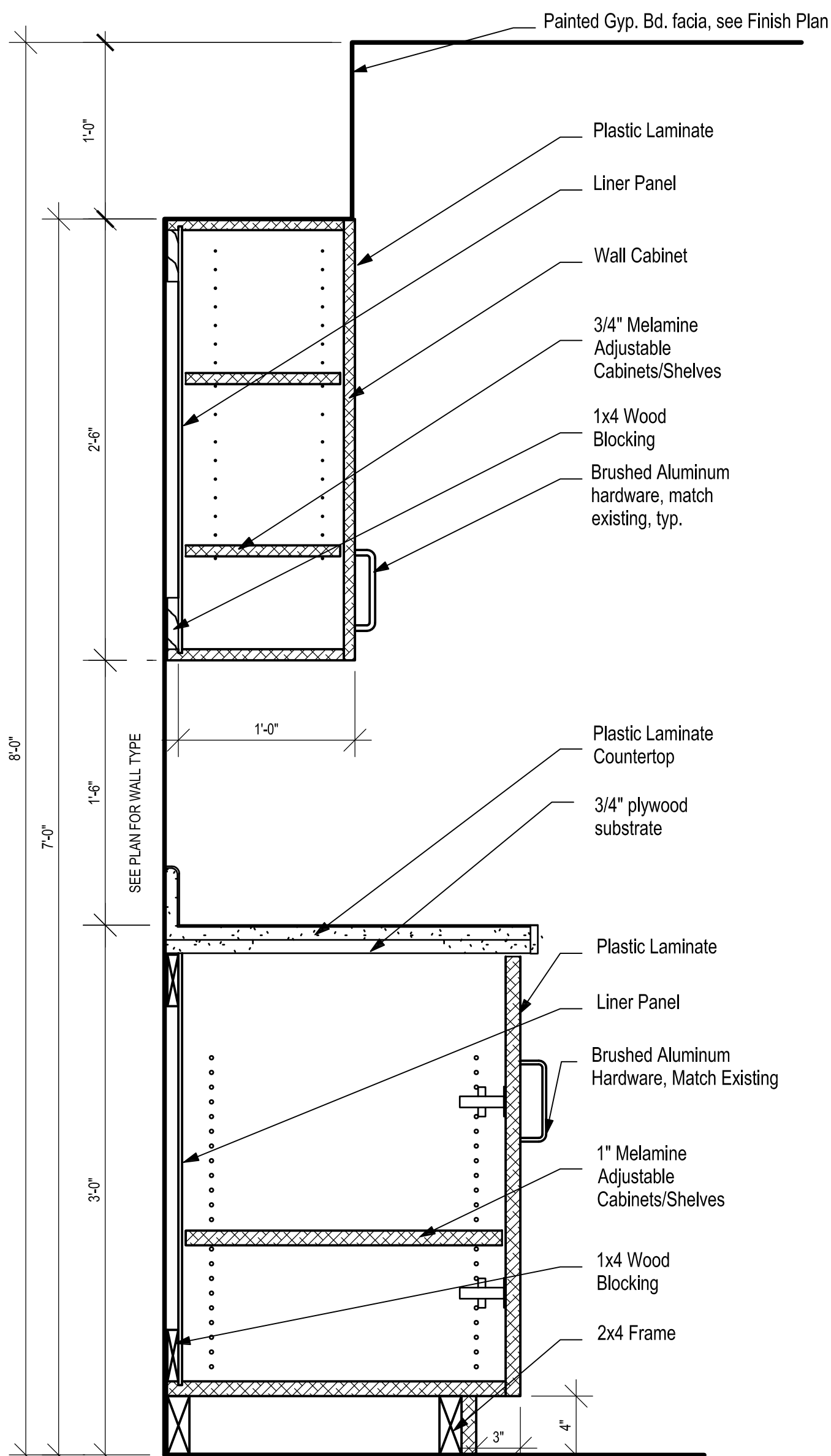
REPLACE FAUCETS, SEE PLUMBING, TYP.

REMOVE EXISTING PLASTIC LAMINATE AT COUNTER AND REPLACE WITH NEW PLASTIC LAMINATE, MATCH ARCHITECT'S SAMPLE, TYP.

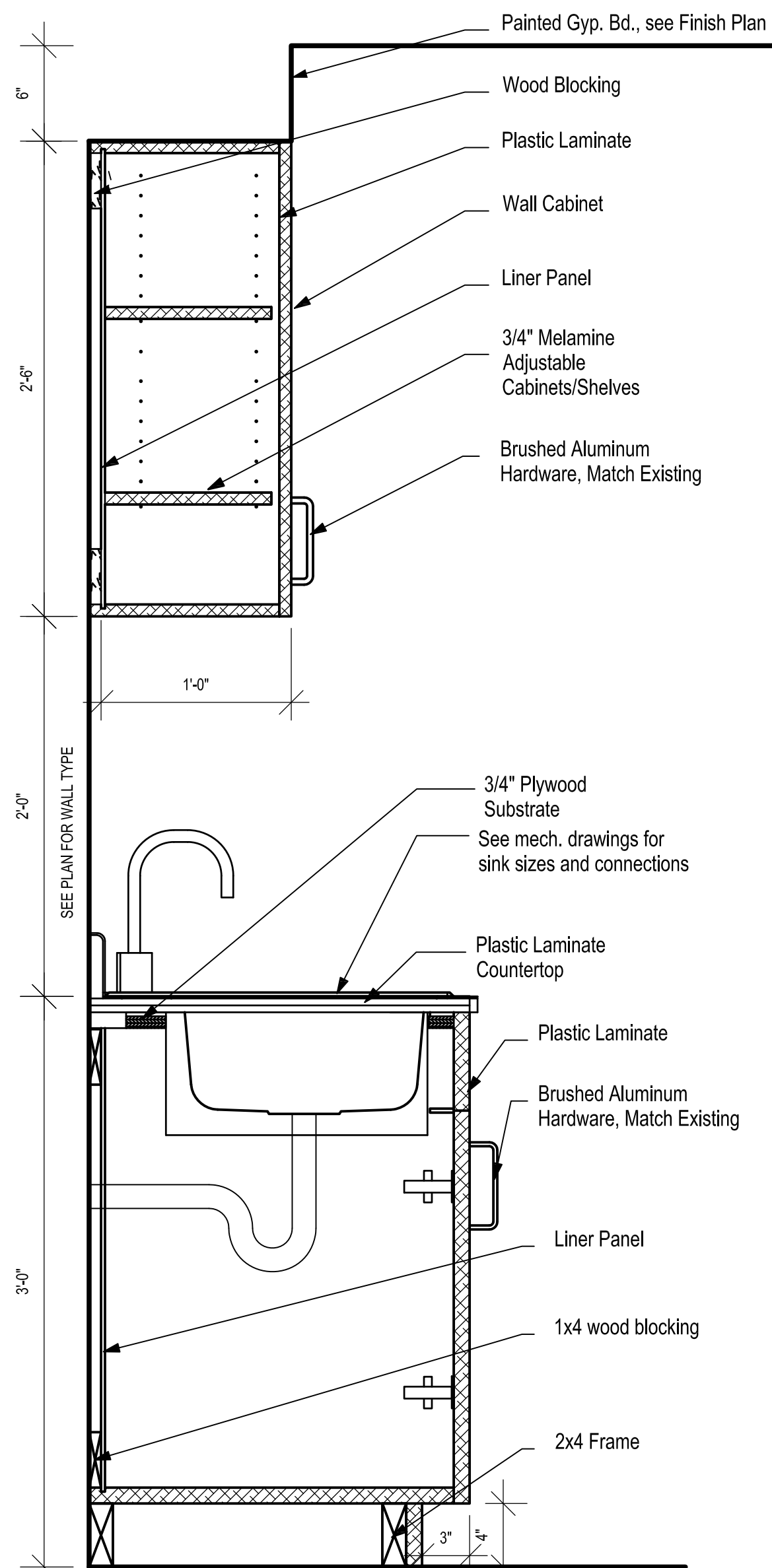
REMOVE EXISTING PLASTIC LAMINATE SURFACES AT BASE CABINETS, AND REPLACE WITH NEW PLASTIC LAMINATE, MATCH ARCHITECT'S SAMPLE, TYP.

NOTE: EXAM ROOM 8 (ROOM 14152) HAS MORE CABINETRY THAN THE TYPICAL CABINET CONDITIONS INDICATED IN THIS PHOTOGRAPHY. CONTRACTOR TO REPLACE ALL LAMINATE ON EXISTING CONDITION.

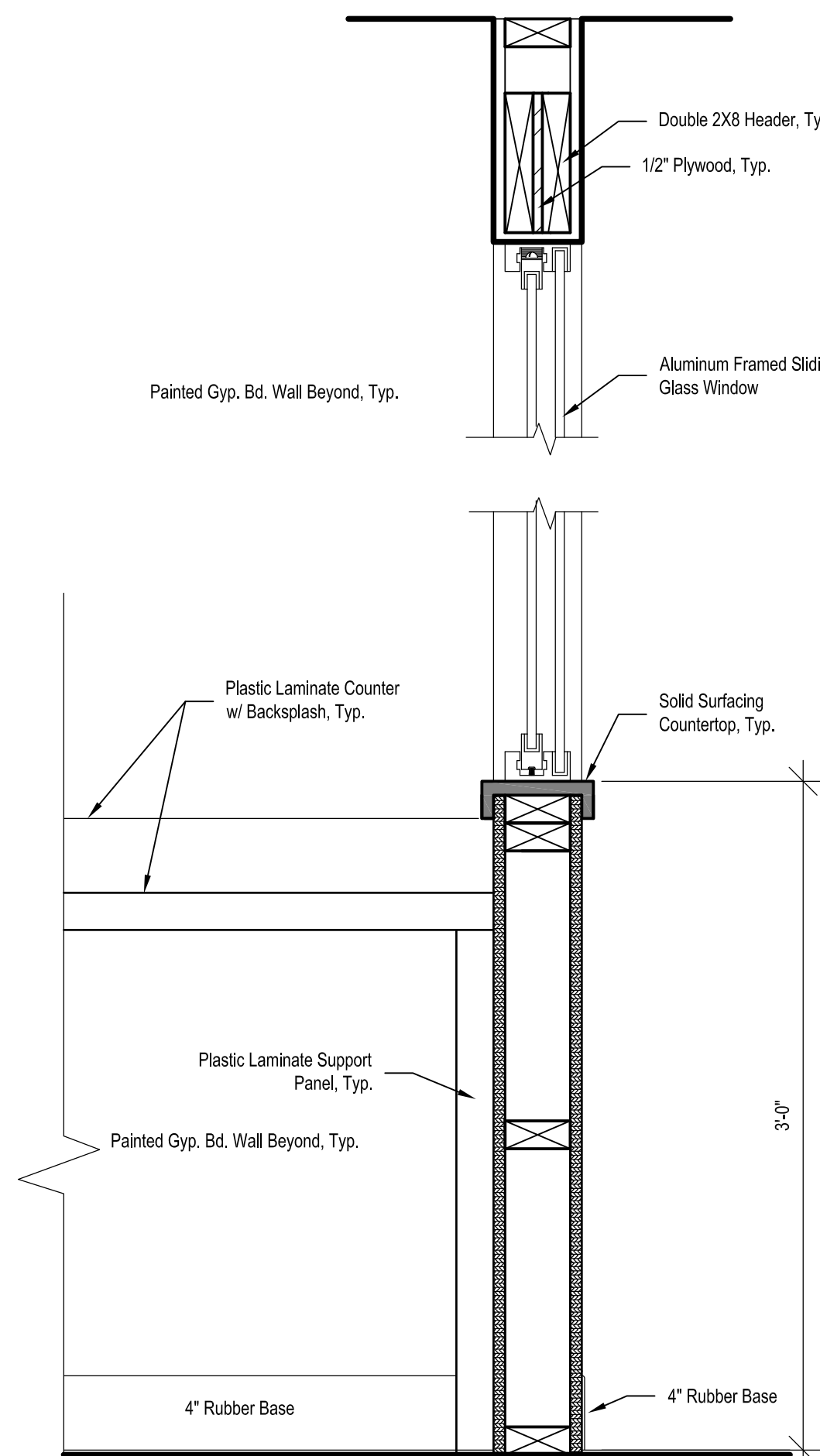
8 Existing Cabinets  
A-5.2 scale: NONE



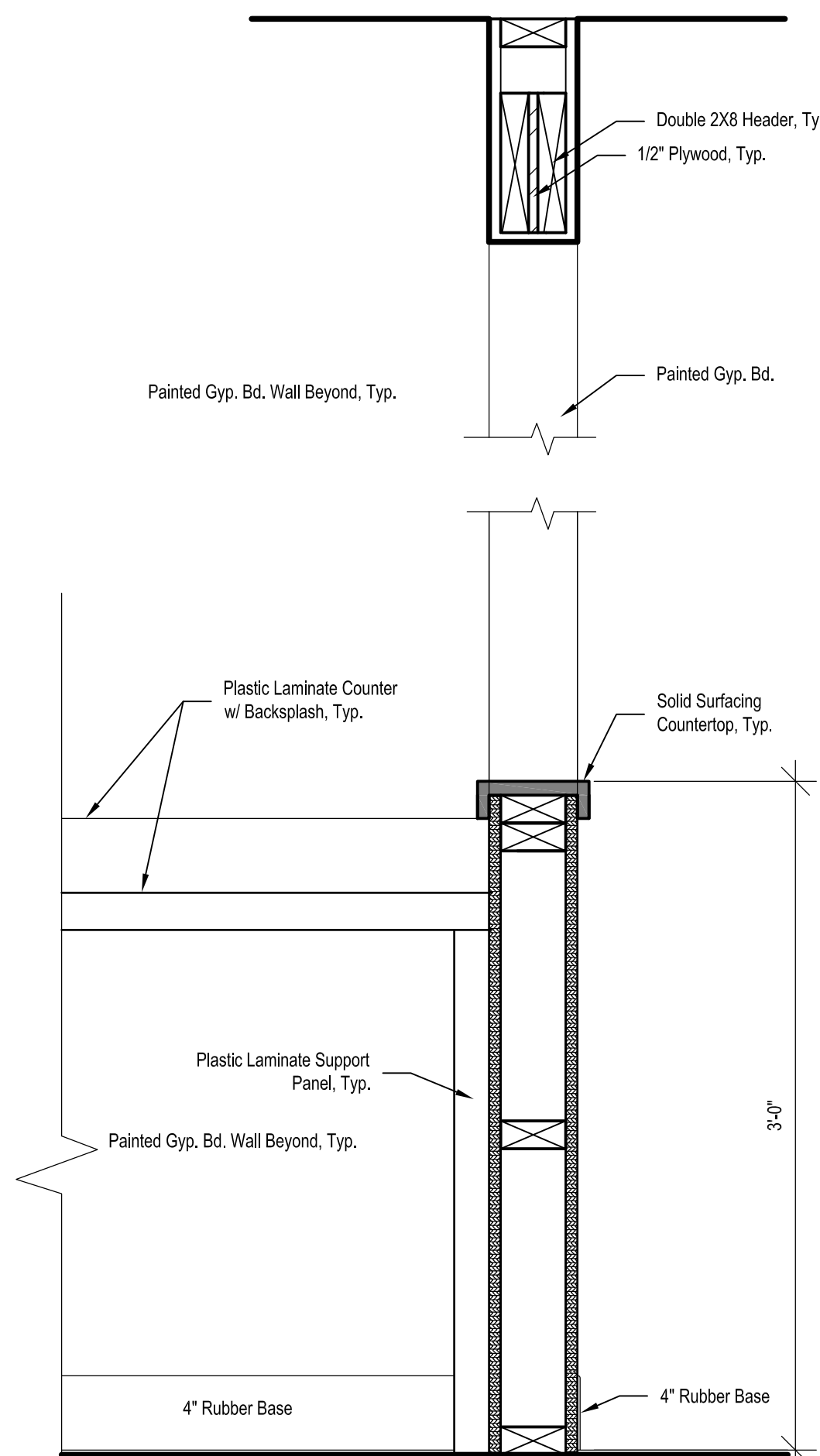
1 Typical Cabinet Section  
A-5.2 scale: 1 1/2" = 1'-0"



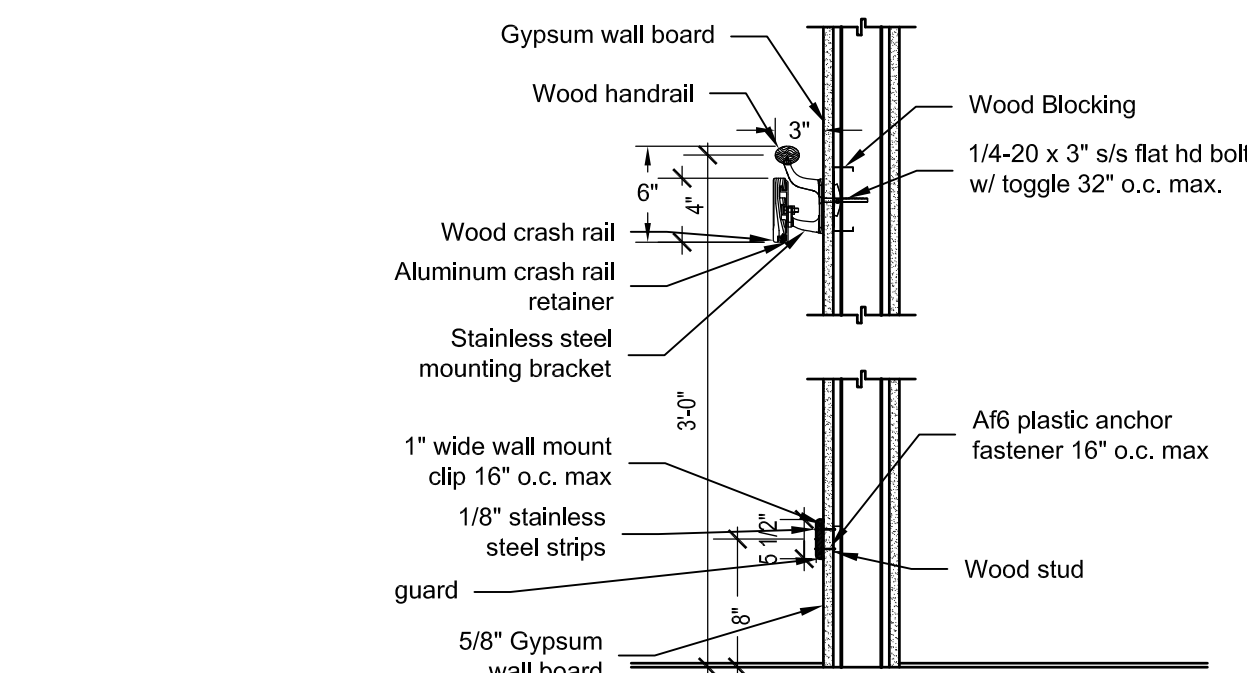
2 Typical Cabinet Section  
A-5.2 scale: 1 1/2" = 1'-0"



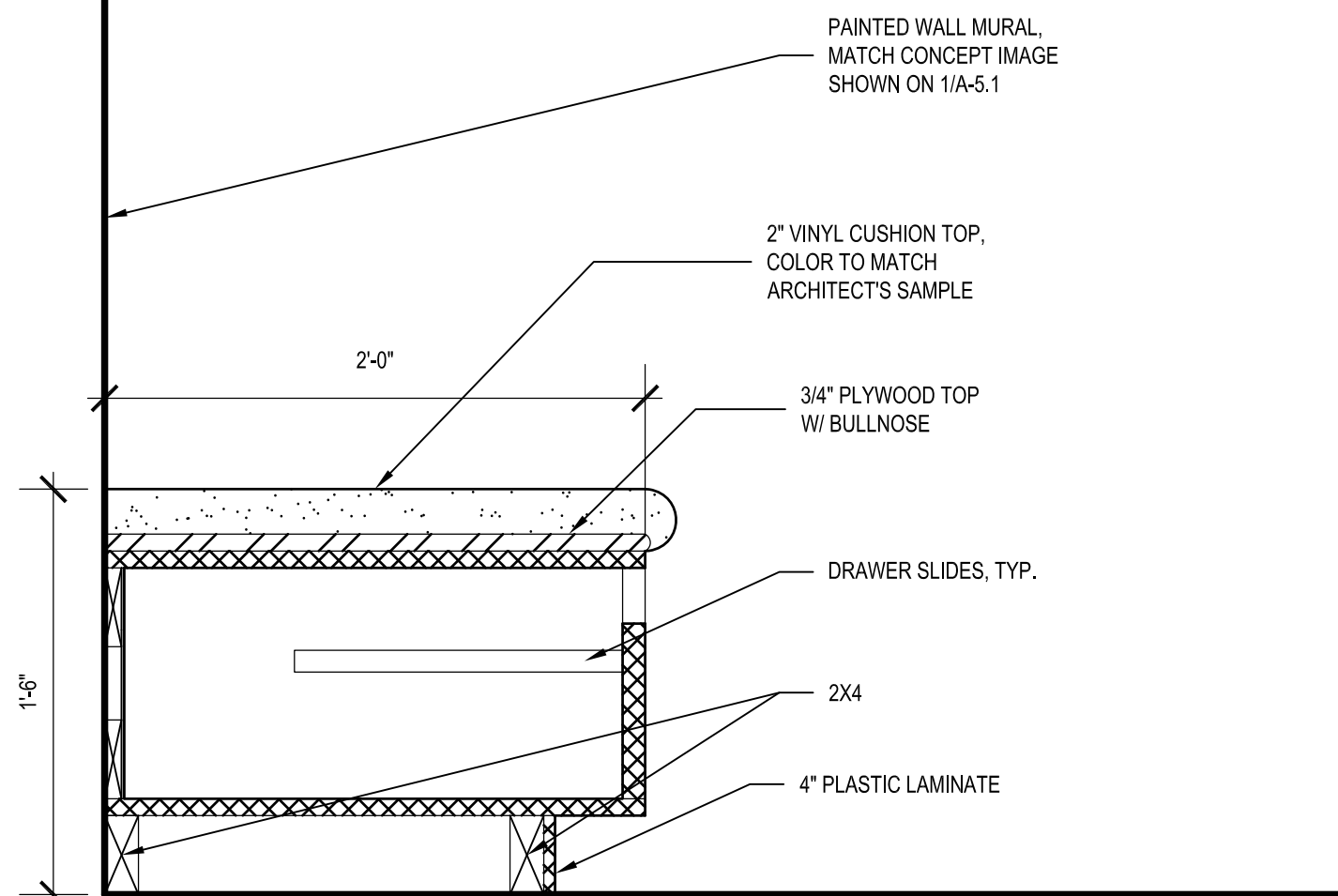
3 Section @ Nurse's Check-in  
A-5.2 scale: 1 1/2" = 1'-0"



4 Section @ AOD  
A-5.0 scale: 1 1/2" = 1'-0"



9 Guard and Handrail Section  
A-5.2 scale: 1 1/2" = 1'



5 Section @ Children's Cabinet  
A-5.2 scale: 1 1/2" = 1'-0"

Revisions		
No.	Date	Remarks

**Hernandez Consulting**  
ALBERT ARCHITECTURE



**Allen&Hoshall**  
engineering since 1915

Approved:	
Title	Signature

Drawing Title	
Detail Sections	
Approved: Service Engineer	
Approved: Service Director	

Project Title	
Southeast VA Health Care System (SLVHCS) A&E Design Urgent Care	
Building Number	Checked
Location	Drawn: S. Gonzalez
1601 Perdido Street, New Orleans, LA	

Date	
January 18, 2013	
Project No.	
VA256-C-0231	
DRAWING NO.	
A-5.2	
Drawn	10 OF 12

