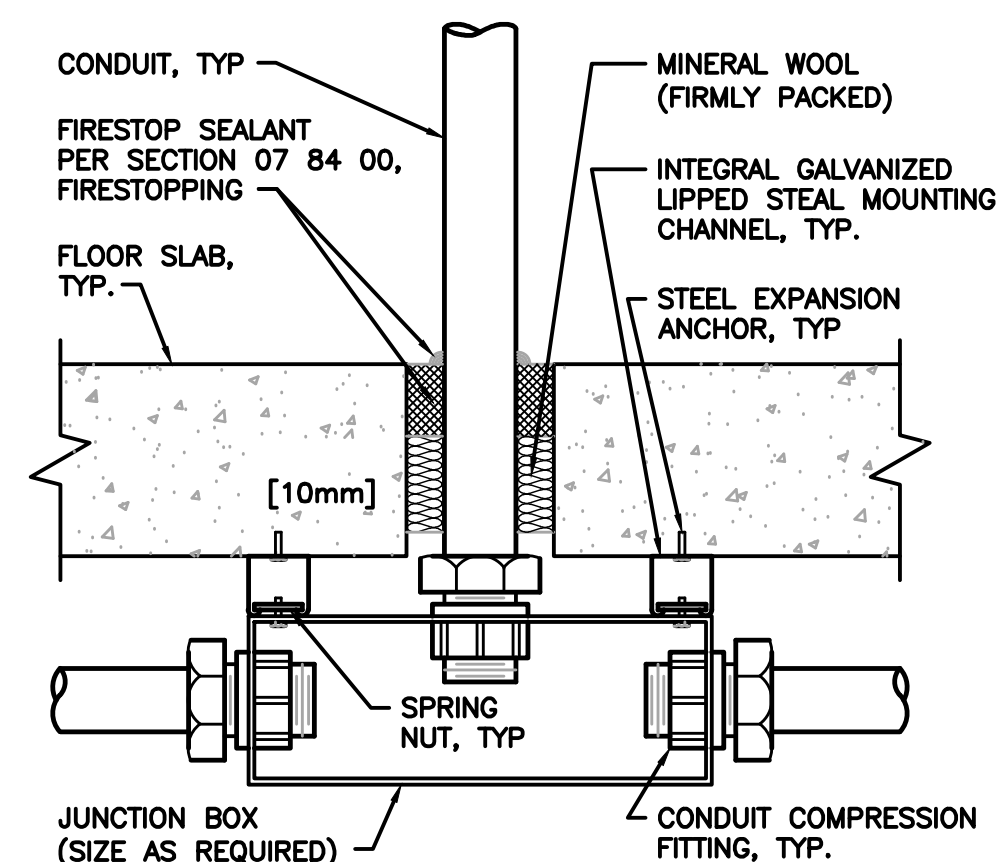
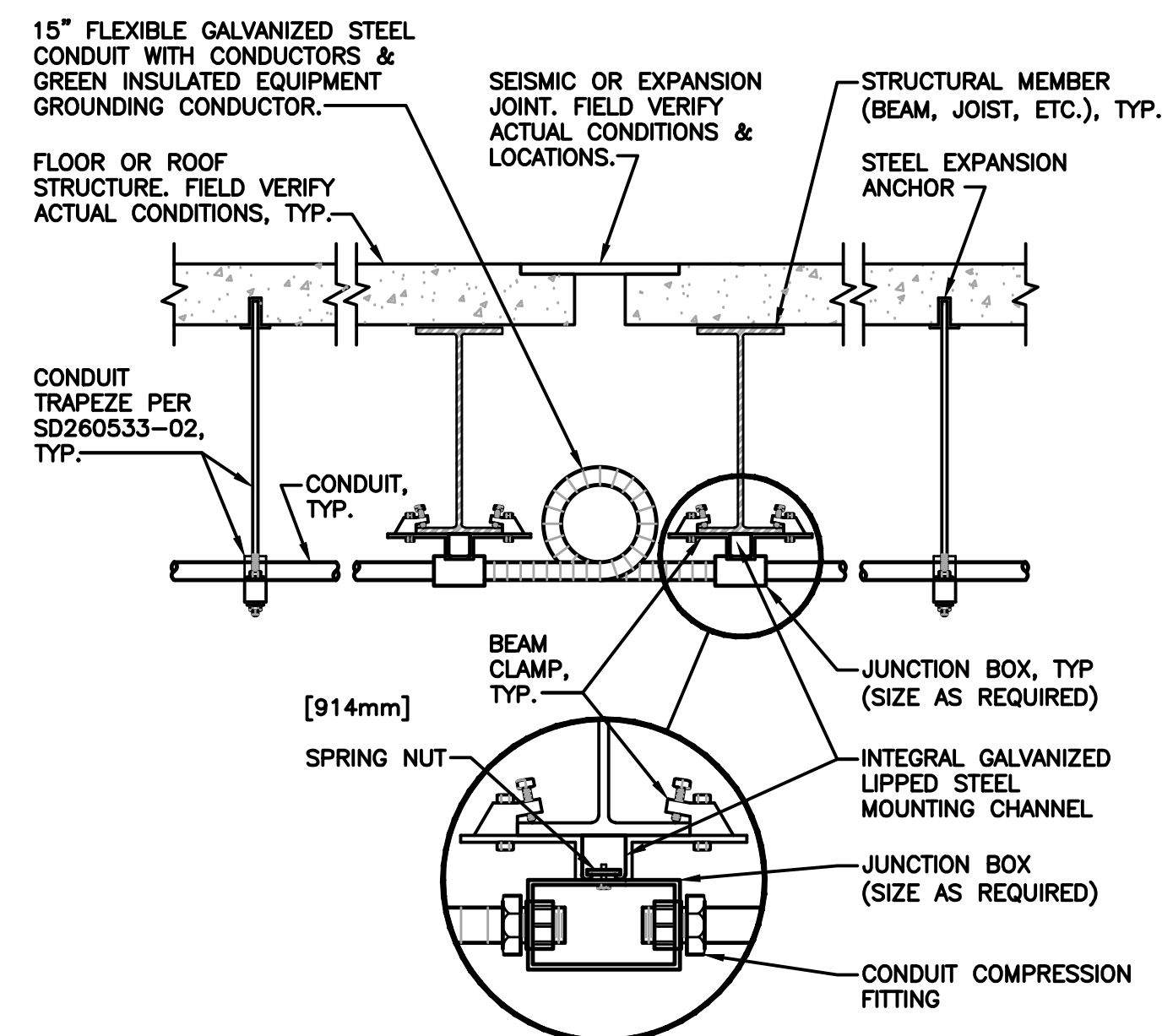


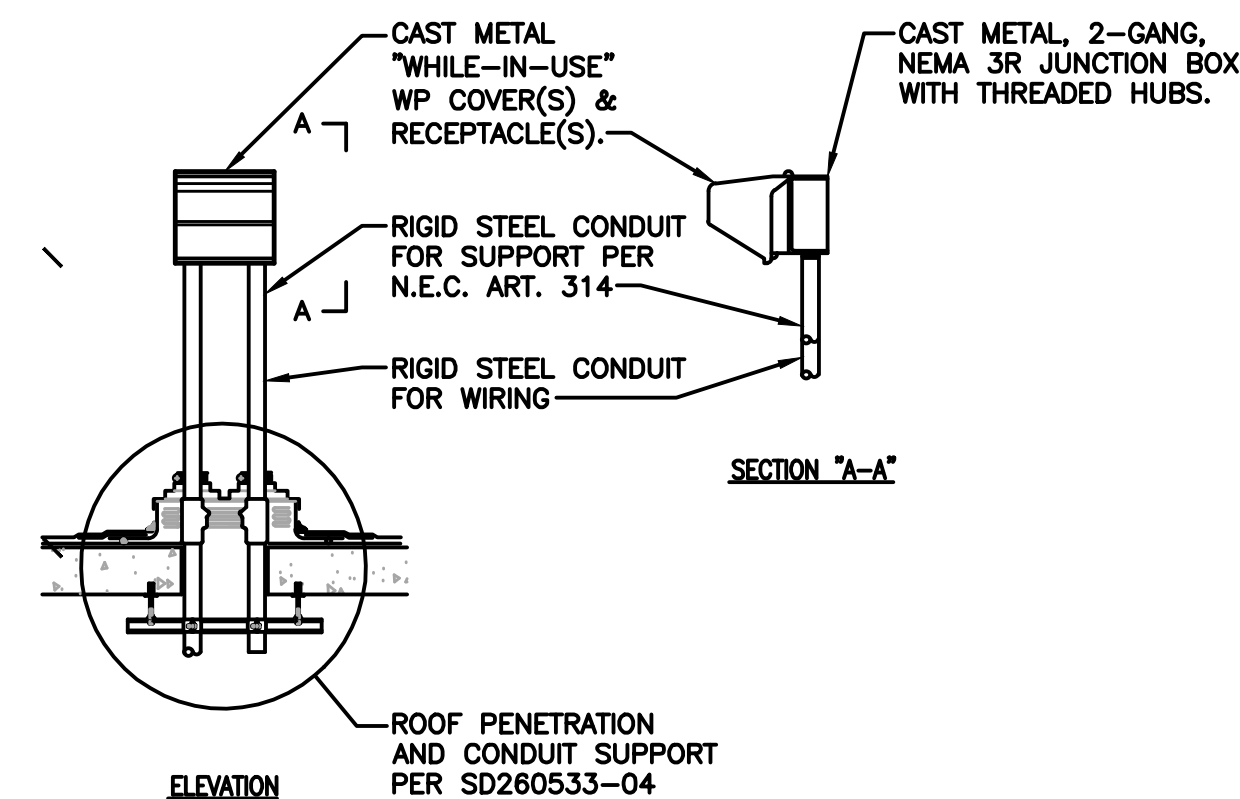
1 FLOOR SLAB PENETRATION DETAIL  
NTS



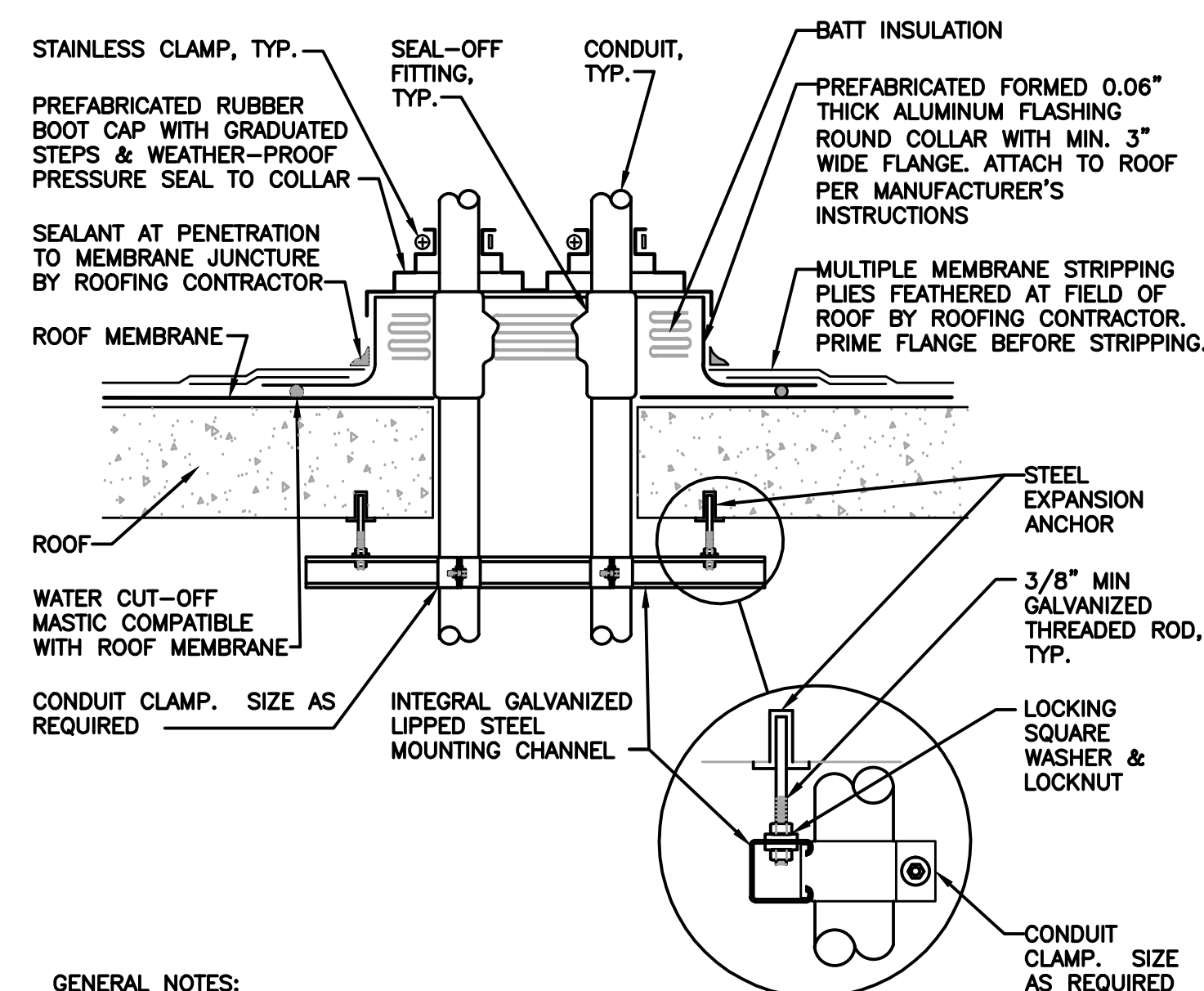
2 CONDUIT JOINT CROSSING DETAIL  
NTS



5 RECEPTACLE ROOF MOUNTING DETAIL  
NTS



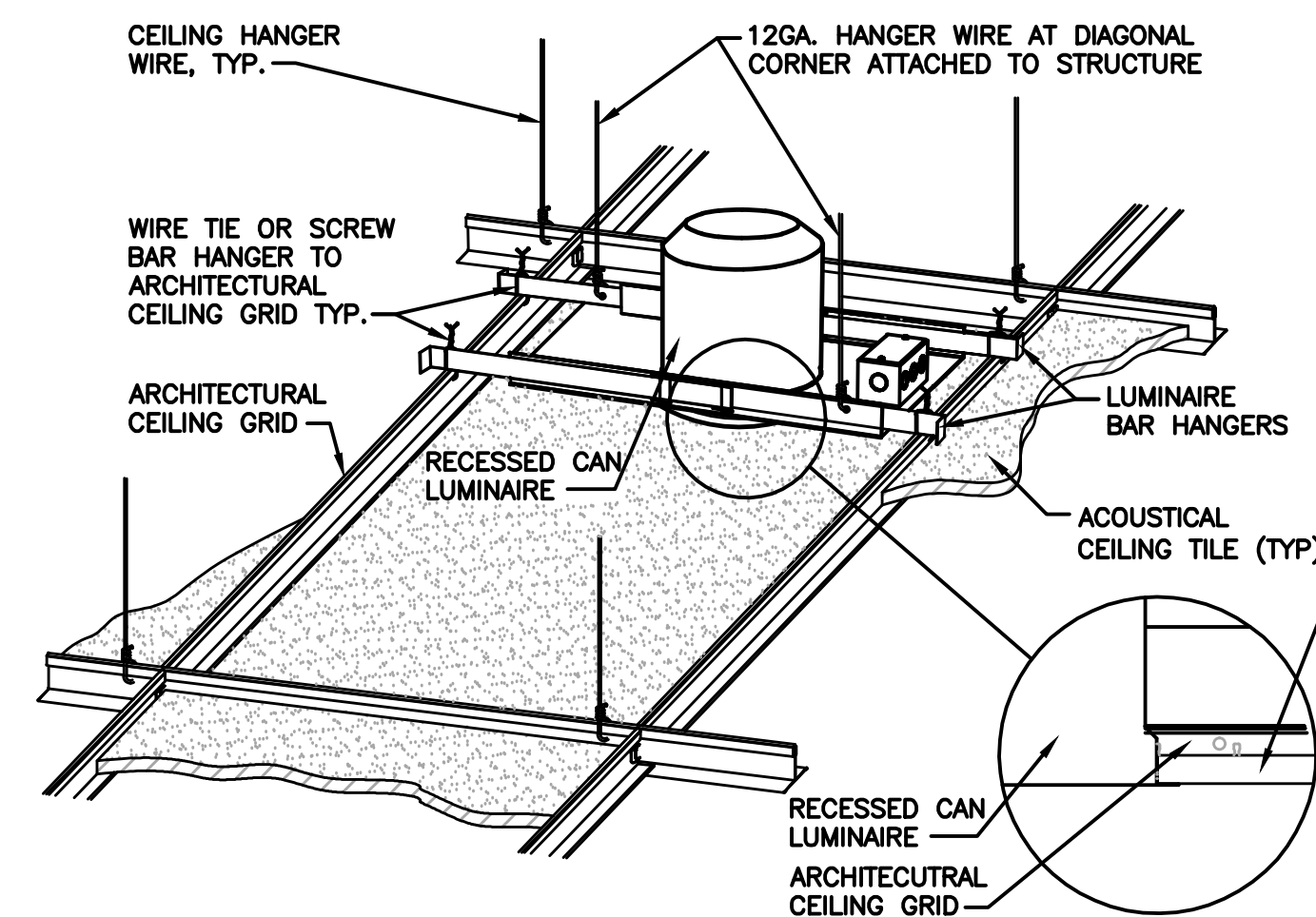
6 ROOF PENETRATION DETAIL  
NTS



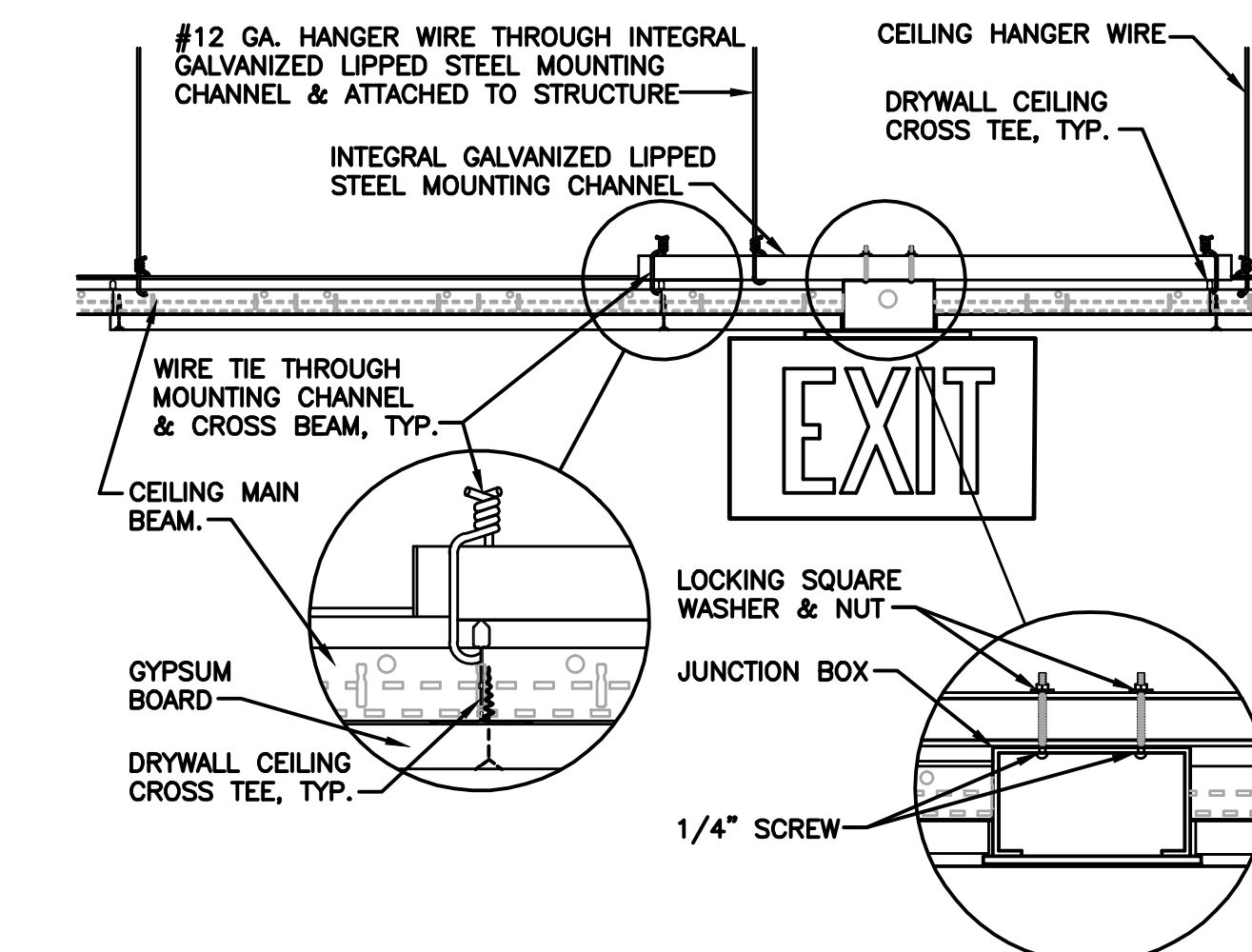
GENERAL NOTES:

1. MAINTAIN A MINIMUM CLEARANCE OF 12\"/>

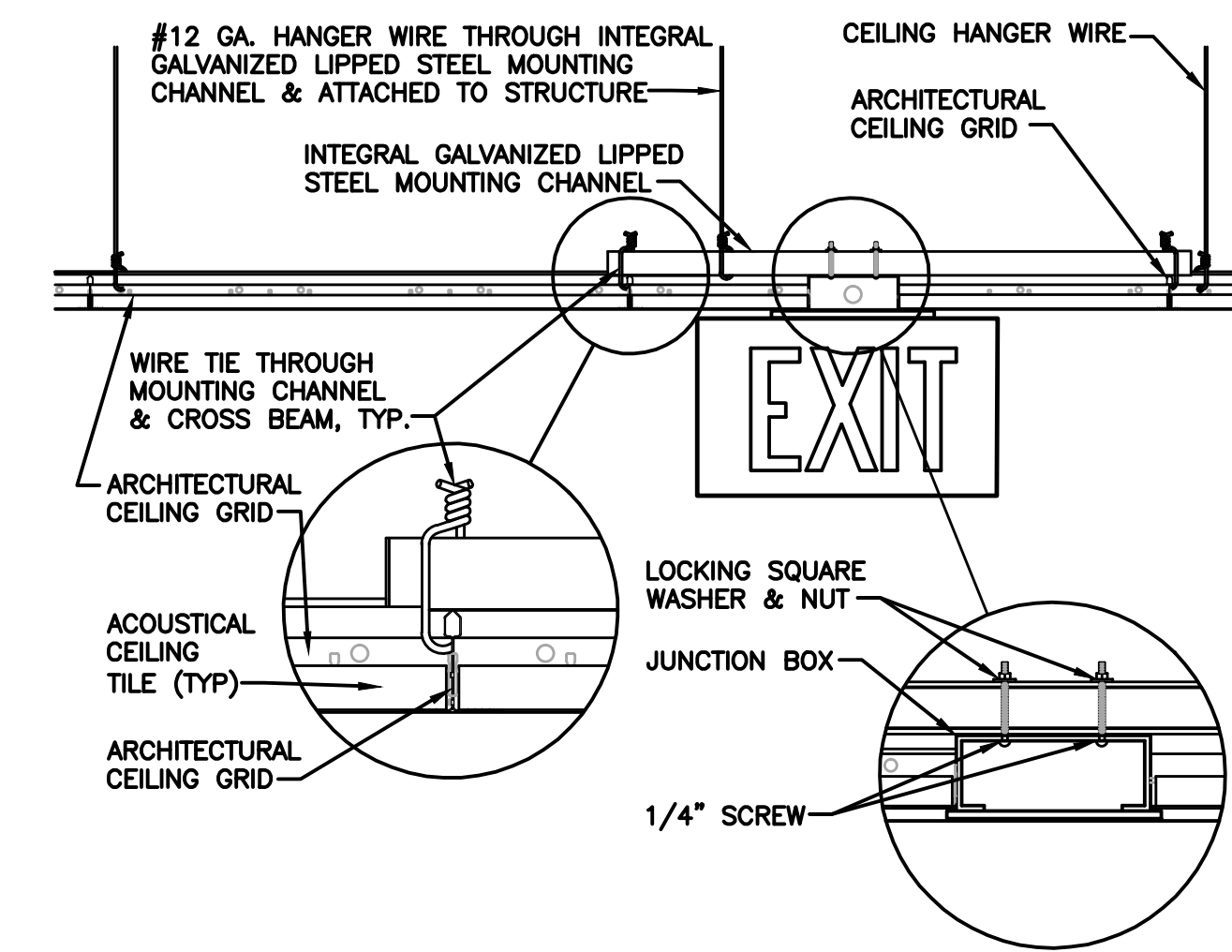
3 DOWNLIGHT MOUNTING - LAY-IN CEILING  
NTS



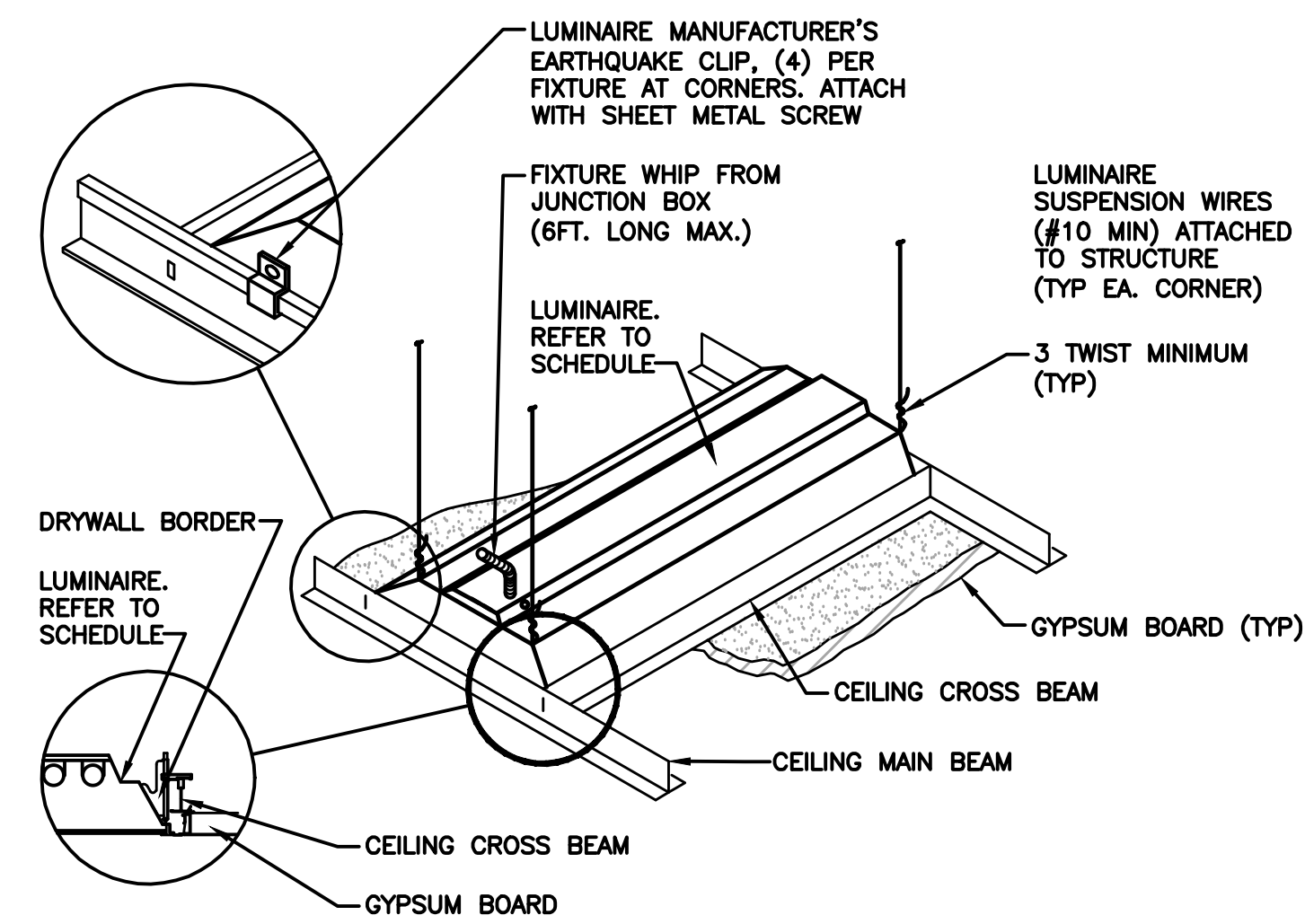
7 EXIT SIGN MOUNTING - GYPBOARD CEILING  
NTS



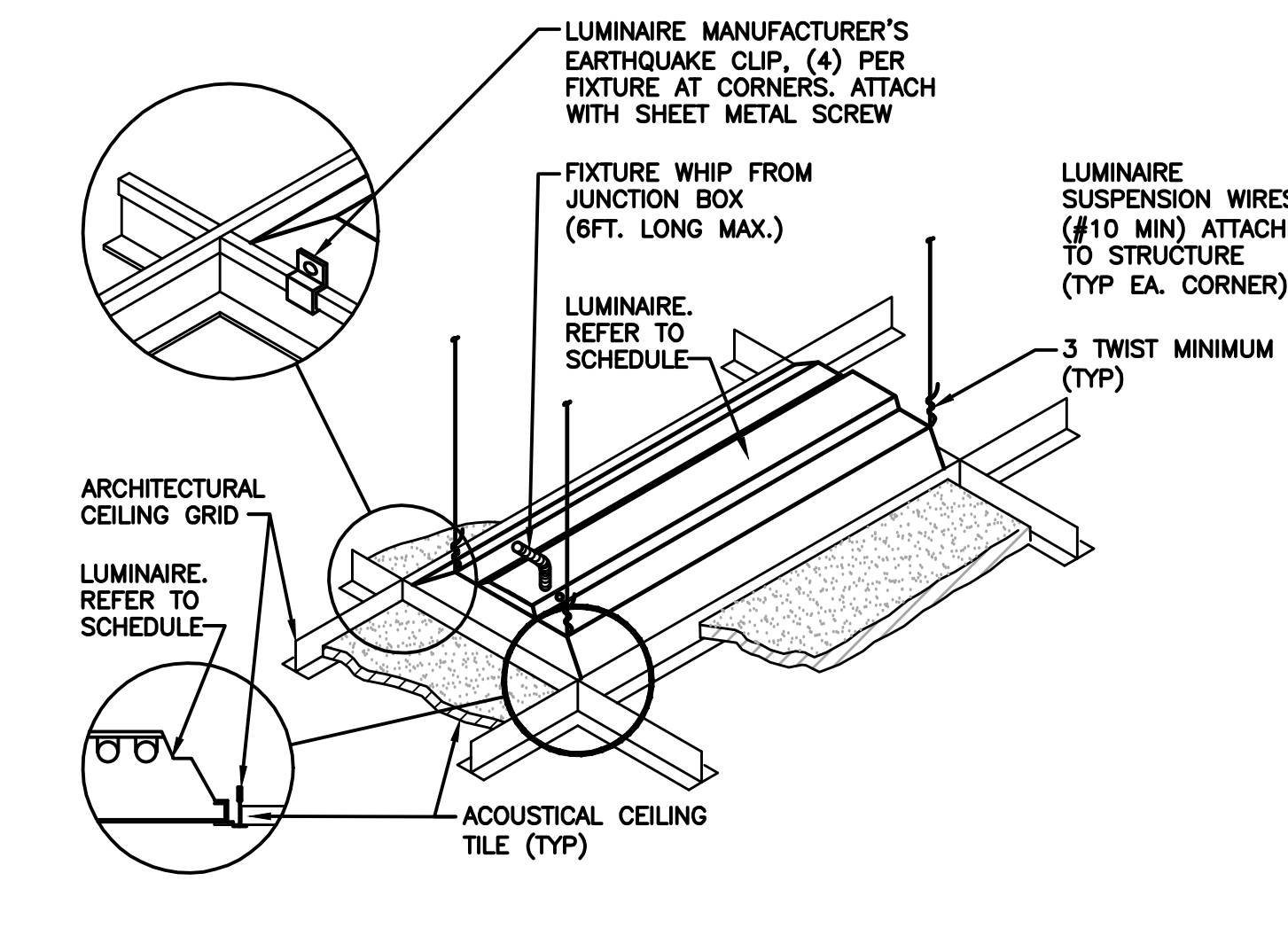
9 EXIT SIGN MOUNTING - LAY-IN CEILING  
NTS



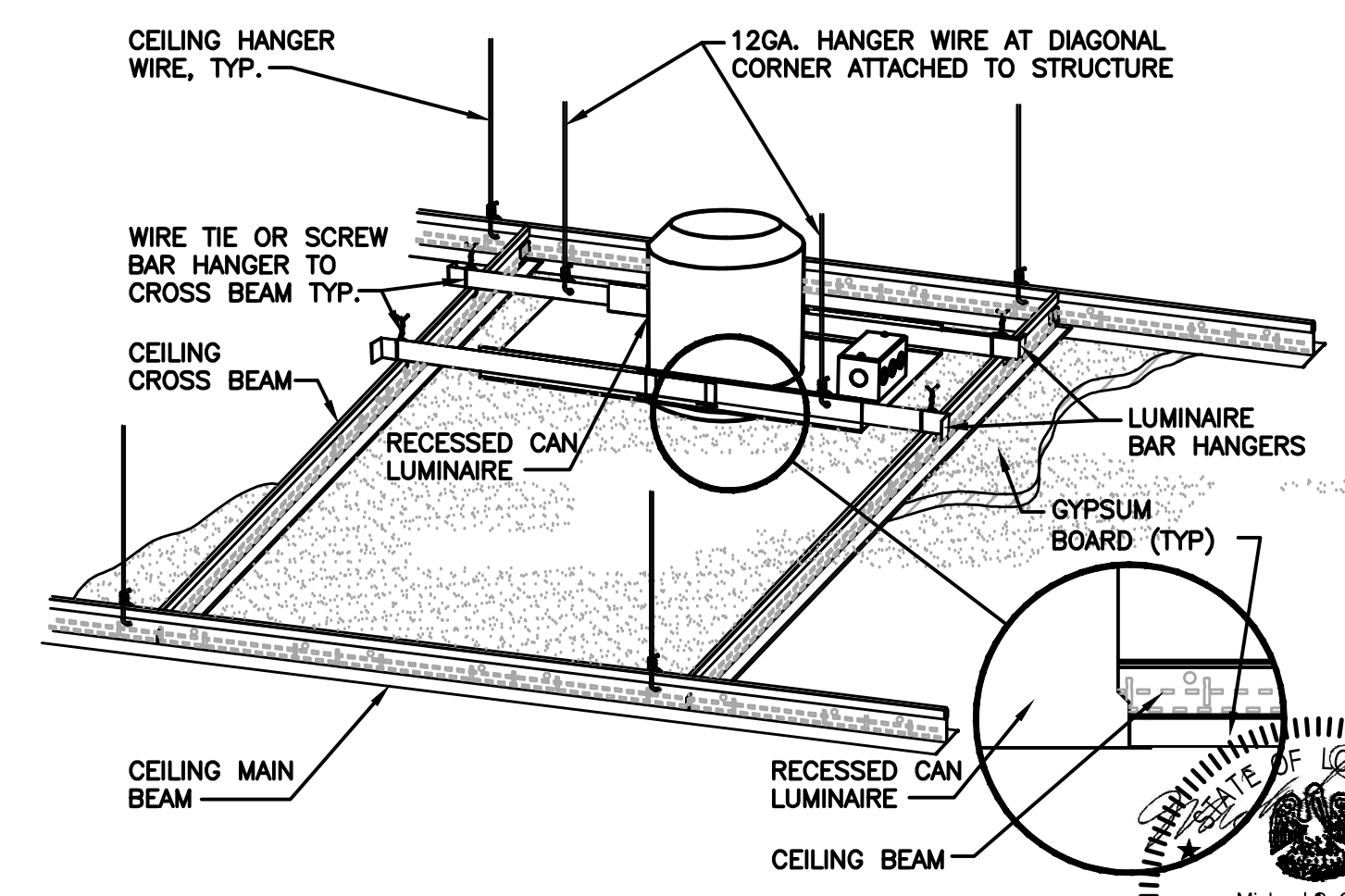
4 LUMINAIRE MOUNTING - GYPBOARD CEILING  
NTS



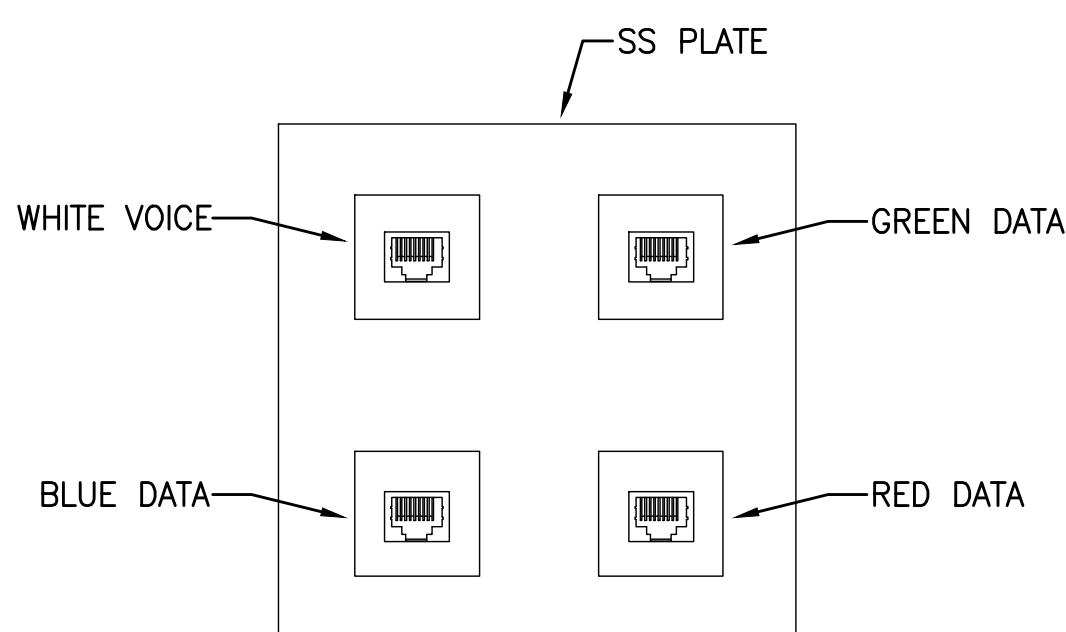
8 LUMINAIRE MOUNTING - LAY-IN CEILING  
NTS



10 DOWNLIGHT MOUNTING - GYPBOARD CEILING  
NTS



11 TYPICAL DATA/COMMUNICATIONS OUTLET CONFIGURATION  
NTS



Revisions		
No.	Date	Remarks

**Hernandez Consulting**  
ALBERT ARCHITECTURE

**JBHM**  
ARCHITECTS P.A.

**Allen&Hoshall**  
engineering since 1915

Approved	
Title	Signature

Drawing Title	
ELECTRICAL - DETAILS	
Approved Service Engineer	
Approved Service Director	

Project Title	
Southeast VA Health Care System (SLVHCS) A&E Design Urgent Care	
Building Number	
Location	1601 Perdido Street, New Orleans, LA

Date	
JANUARY 18, 2013	
Project No.	VA256-C-0231
Drawn	
Checked	MEB
Scale	
Sheet No.	E003
Imp.	1 OF 1

