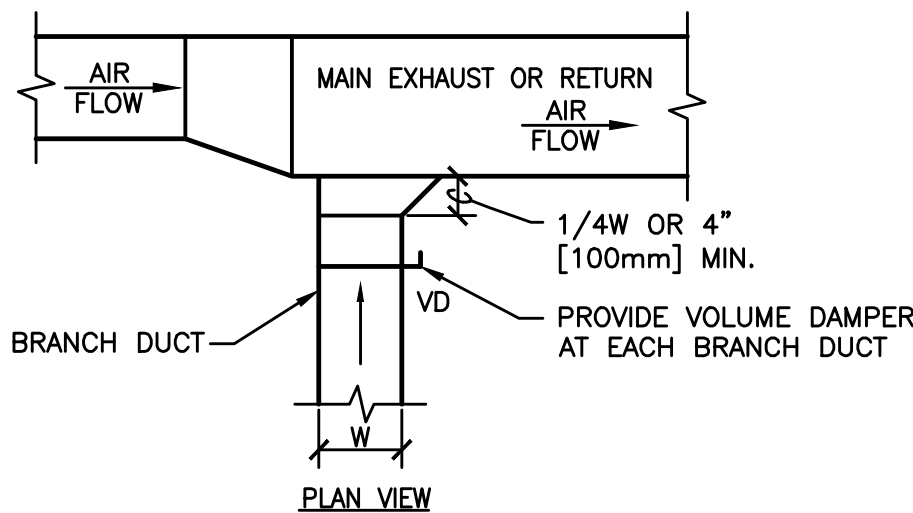


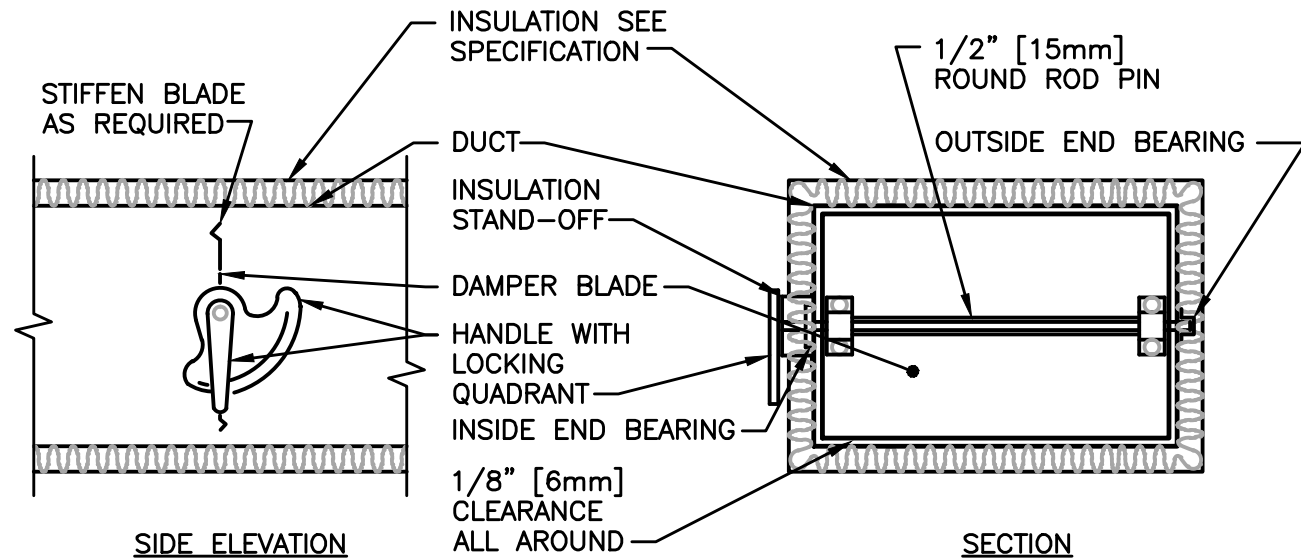
NOTE:

1. ALL VANE ELBOWS SHALL BE CONSTRUCTED AND INSTALLED AS DETAILED BY SMACNA.
2. WHEN W1 DOES NOT EQUAL W2, VANE SHALL BE SINGLE THICKNESS VANE TYPE REGARDLESS OF W DIMENSION.
3. ALL SINGLE THICKNESS VANES SHALL HAVE A 2" [50mm] RADIUS, 1 1/2" [40mm] MAXIMUM SPACE BETWEEN VANES AND A 3/4" [20mm] TRAILING EDGE.
4. WHEN W EQUALS W2 AND W1 IS GREATER THAN 20" [500mm] VANES SHALL BE DOUBLE VANE TYPE.

1 DUCTWORK SQUARE VANE ELBOWS
NTS



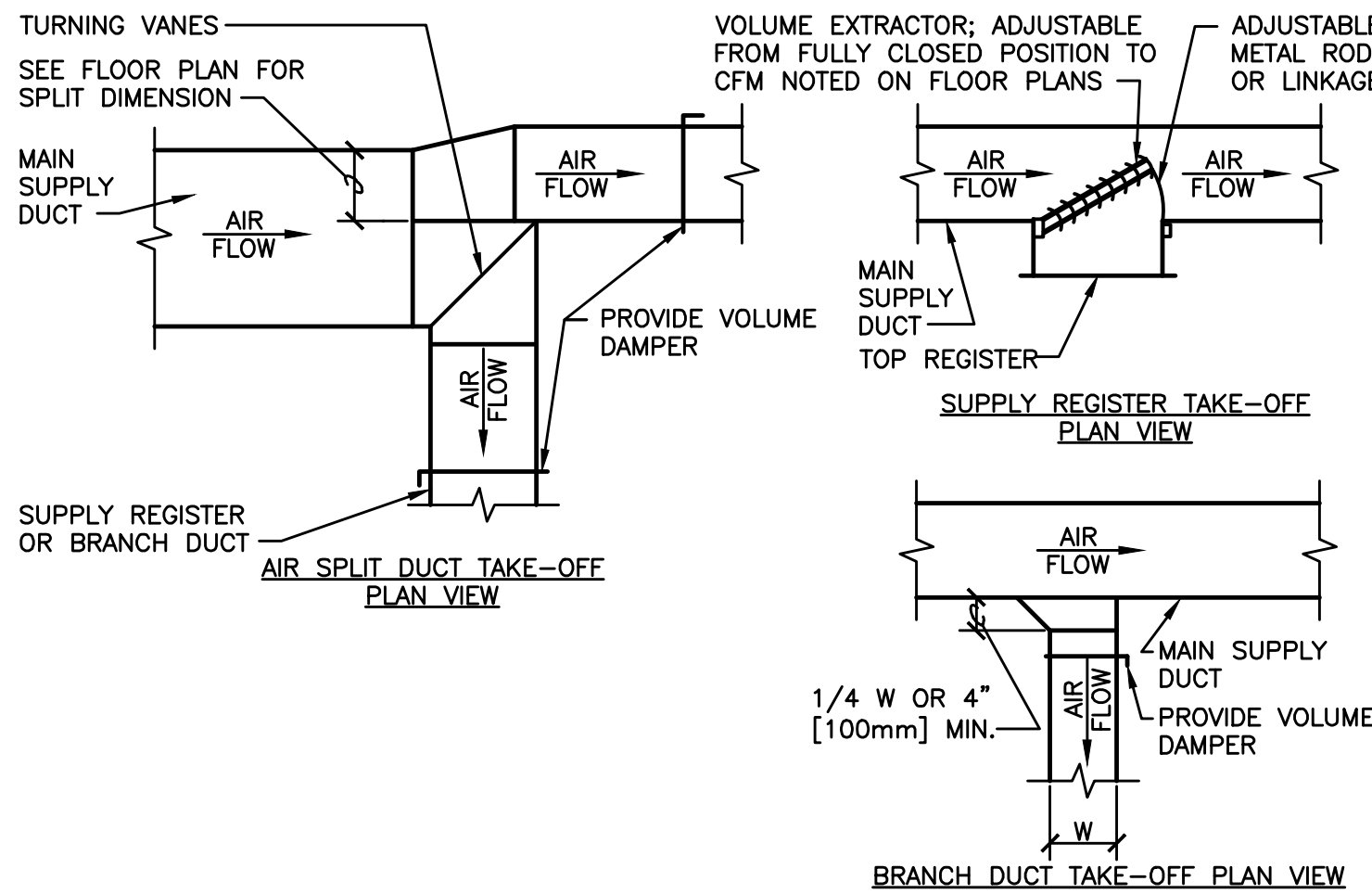
6 EXHAUST OR RETURN BRANCH DUCTWORK
NTS



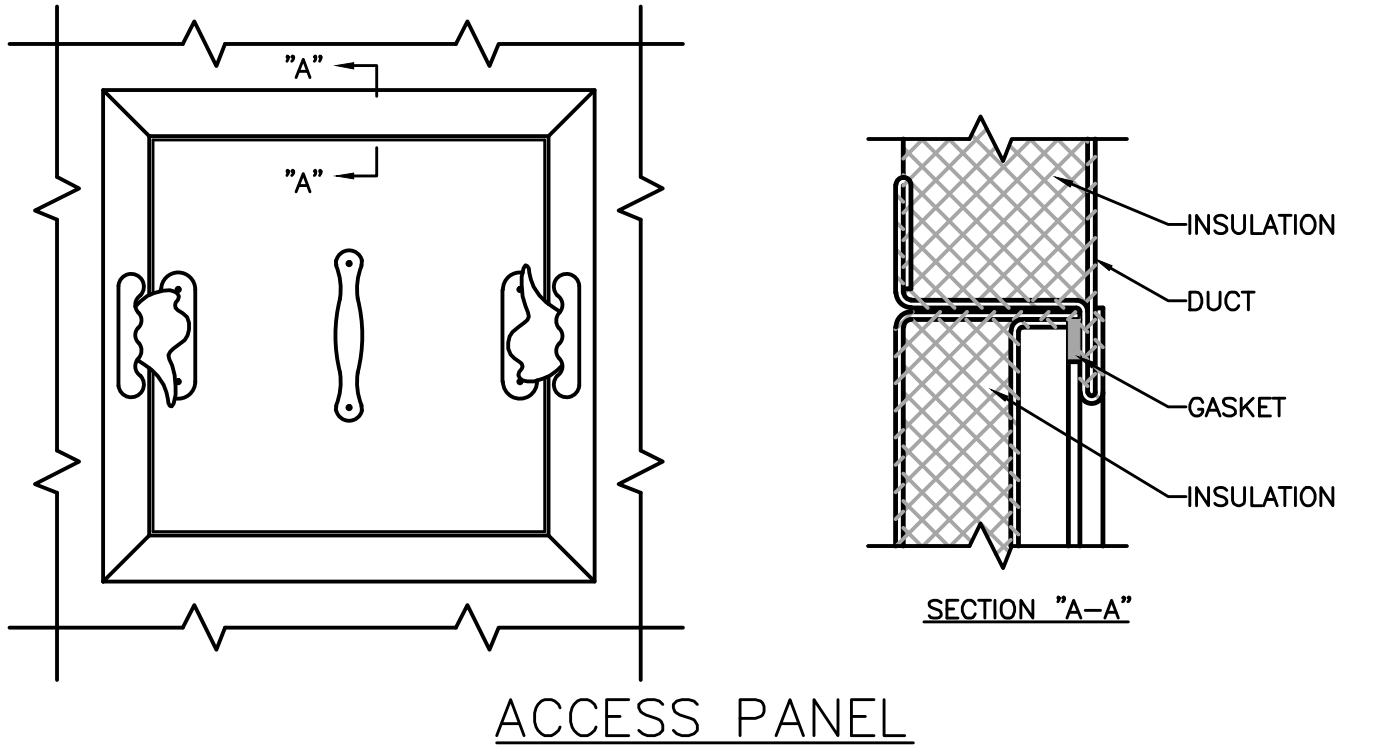
NOTE:

1. DELETE INSULATION STAND-OFF ON DUCTWORK WITHOUT EXTERIOR INSULATION.
2. DETAIL SHOWS SINGLE BLADE DAMPER. DAMPER INSTALLATION SHALL BE SIMILAR FOR MULTI-BLADE DAMPERS & ROUND DAMPERS.

7 VOLUME DAMPER DETAIL
NTS

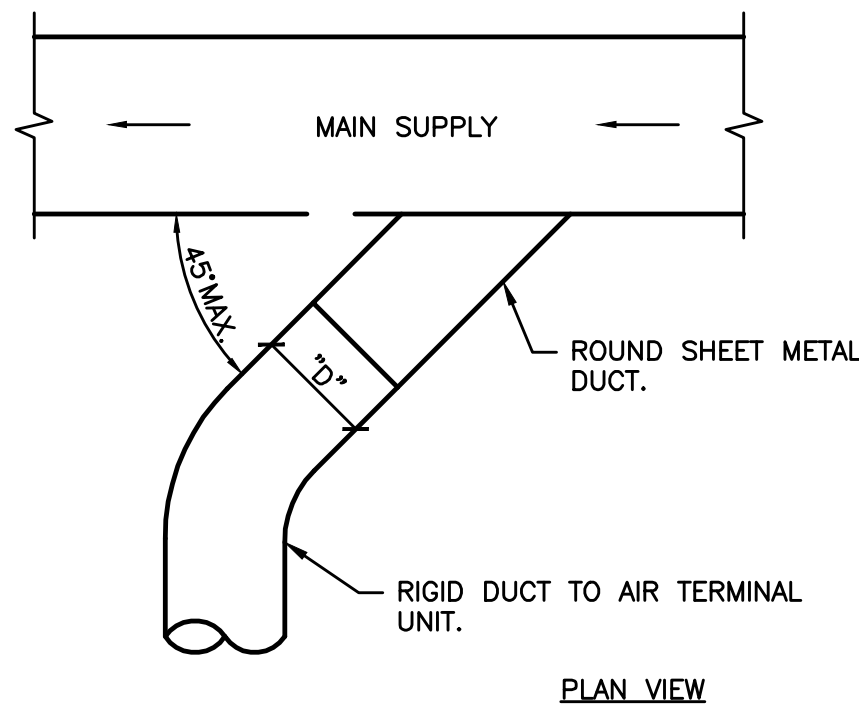


2 SUPPLY DUCTWORK TAKE-OFFS
NTS

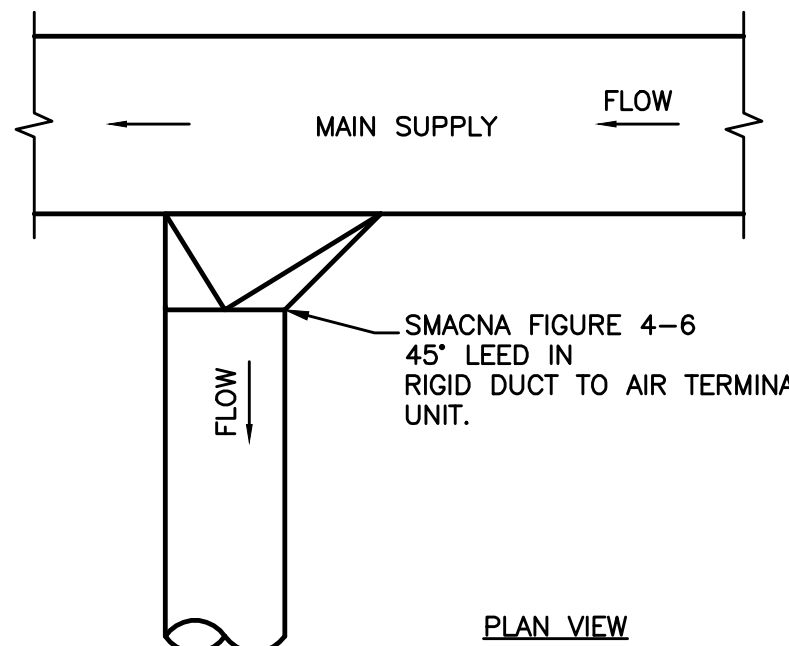


- NOTES:
1. LATCHES SHALL BE OF THE WEDGE TYPE TO CLOSE DOORS TIGHTLY.
 2. HINGES ON THE ACCESS DOORS SHALL HAVE NON-CORROSIVE PINS.
 3. SEE SMACNA 2005, FIGURE 9-15

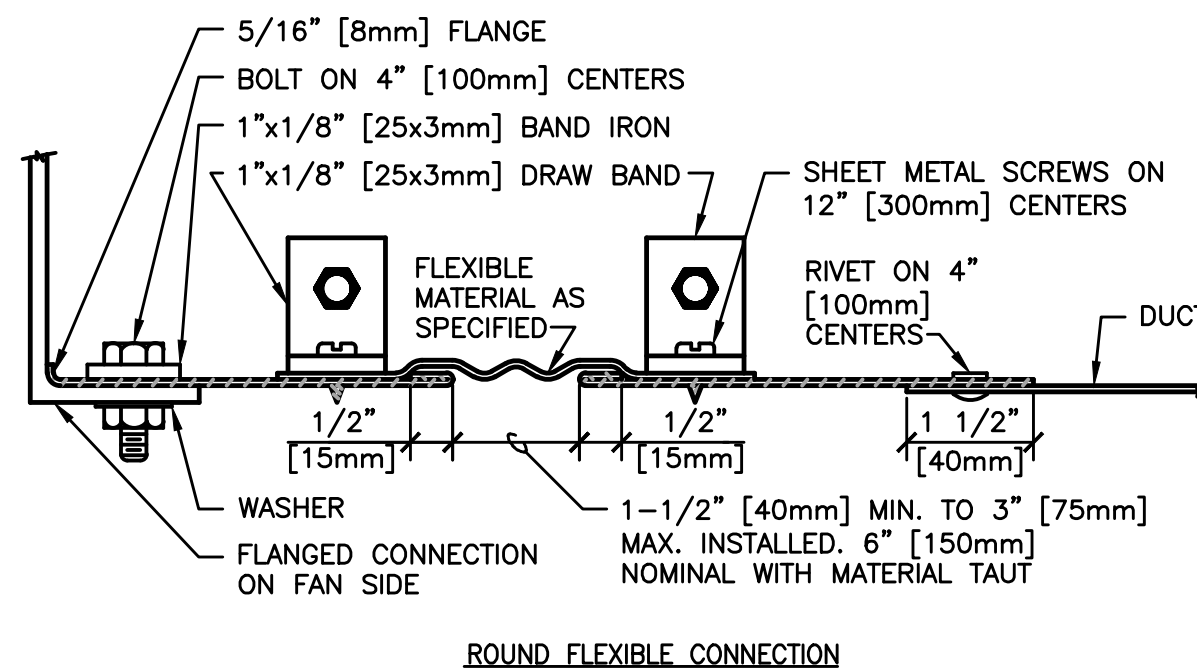
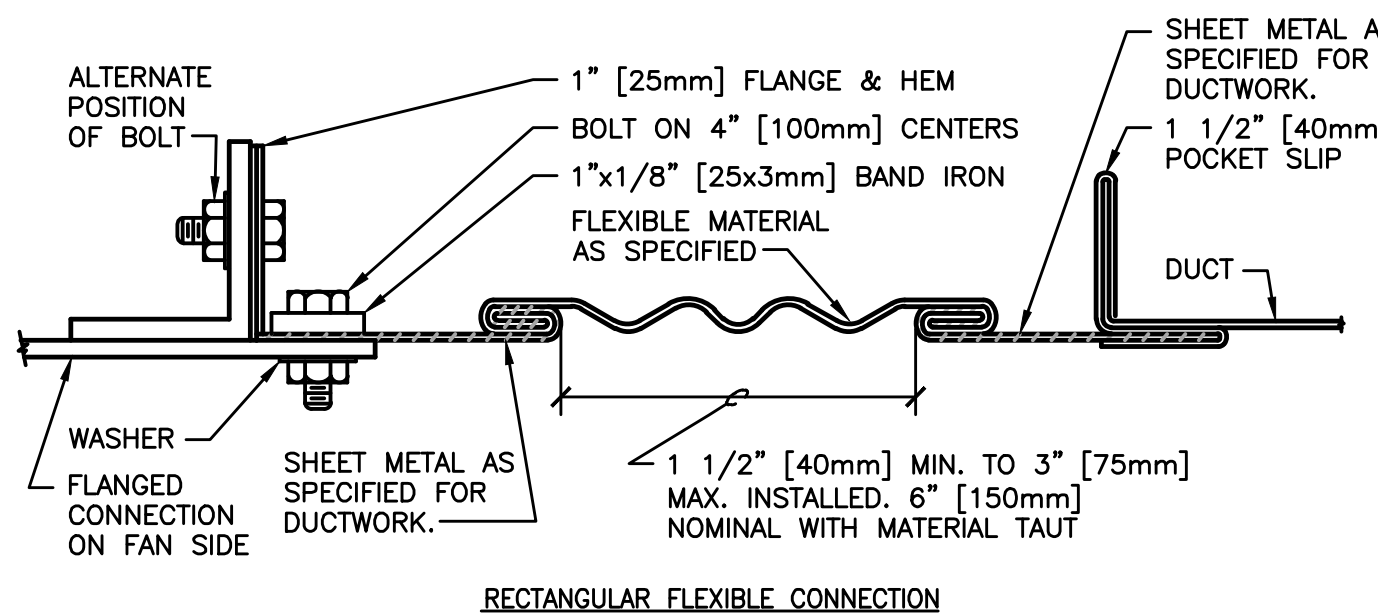
8 ACCESS PANEL AND DOOR DETAIL
NTS



3 SUPPLY DUCT TAKEOFF - AIR TERMINAL UNIT
NTS



4 ALTERNATE SUPPLY DUCT TAKEOFF - AIR TERMINAL UNITS
NTS



9 FLEXIBLE DUCT CONNECTIONS
NTS



Revisions		
No.	Date	Remarks

Hernandez Consulting
ALBERT ARCHITECTURE



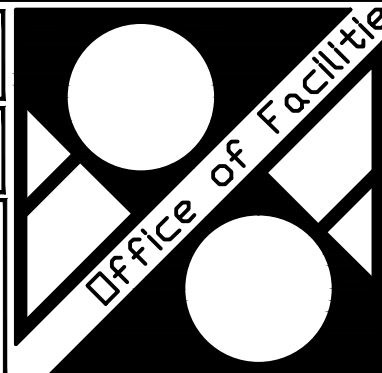
Allen&Hoshall
engineering since 1915

Approved:	
Title	Signature

Drawing Title	
MECHANICAL - DETAILS	
Approved Service Engineer	
Approved Service Director	

Project Title	
Southeast VA Health Care System (SLVHCS) A&E Design Urgent Care	
Building Number	
Checked WLP	
Drawn WLP	
Location 1601 Perdido Street, New Orleans, LA	

Date
January 18, 2013
Project No.
VA256-C-0231
Revised No.
M301
Dep. 1 OF 1



Department of Veterans Affairs