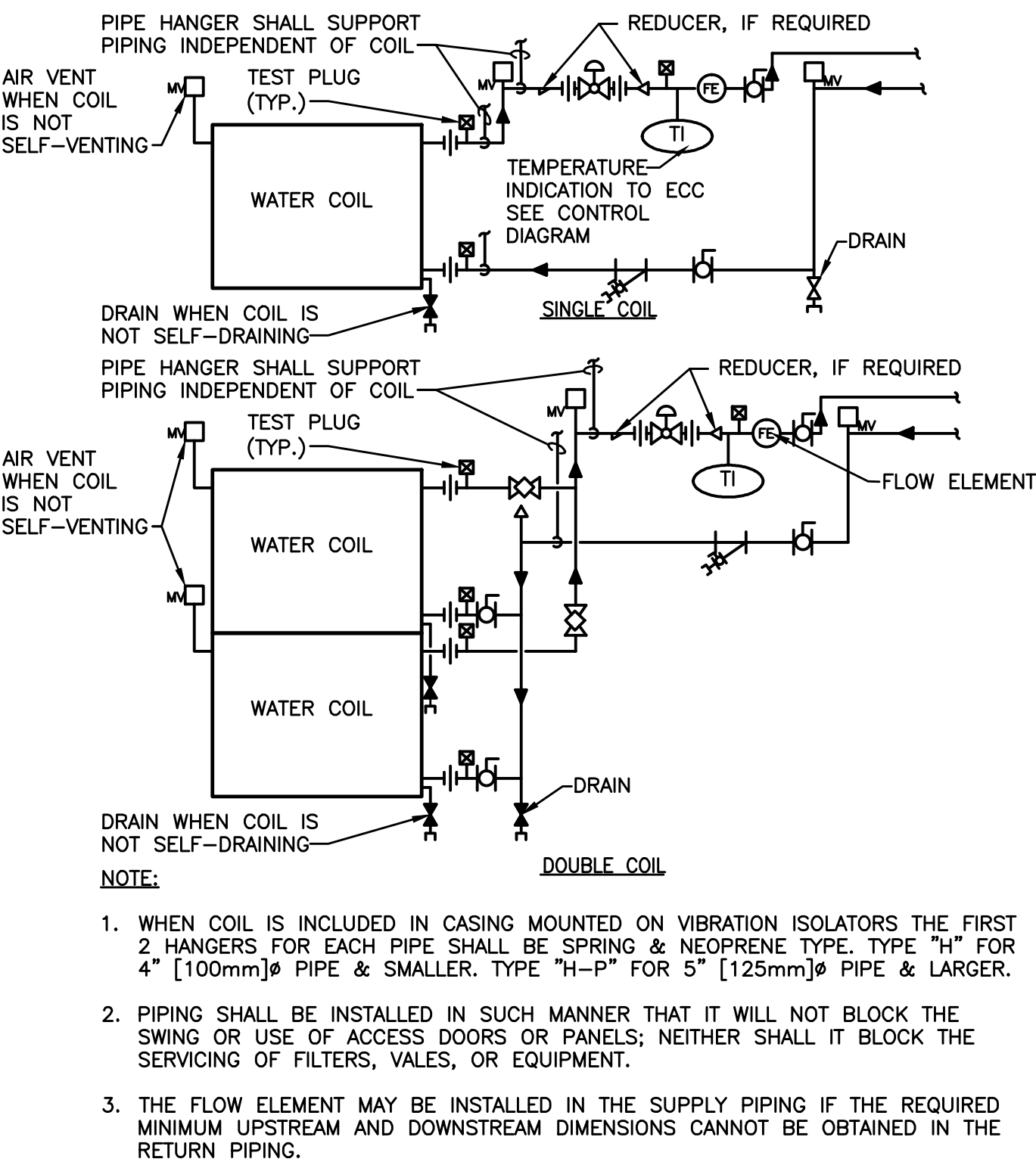
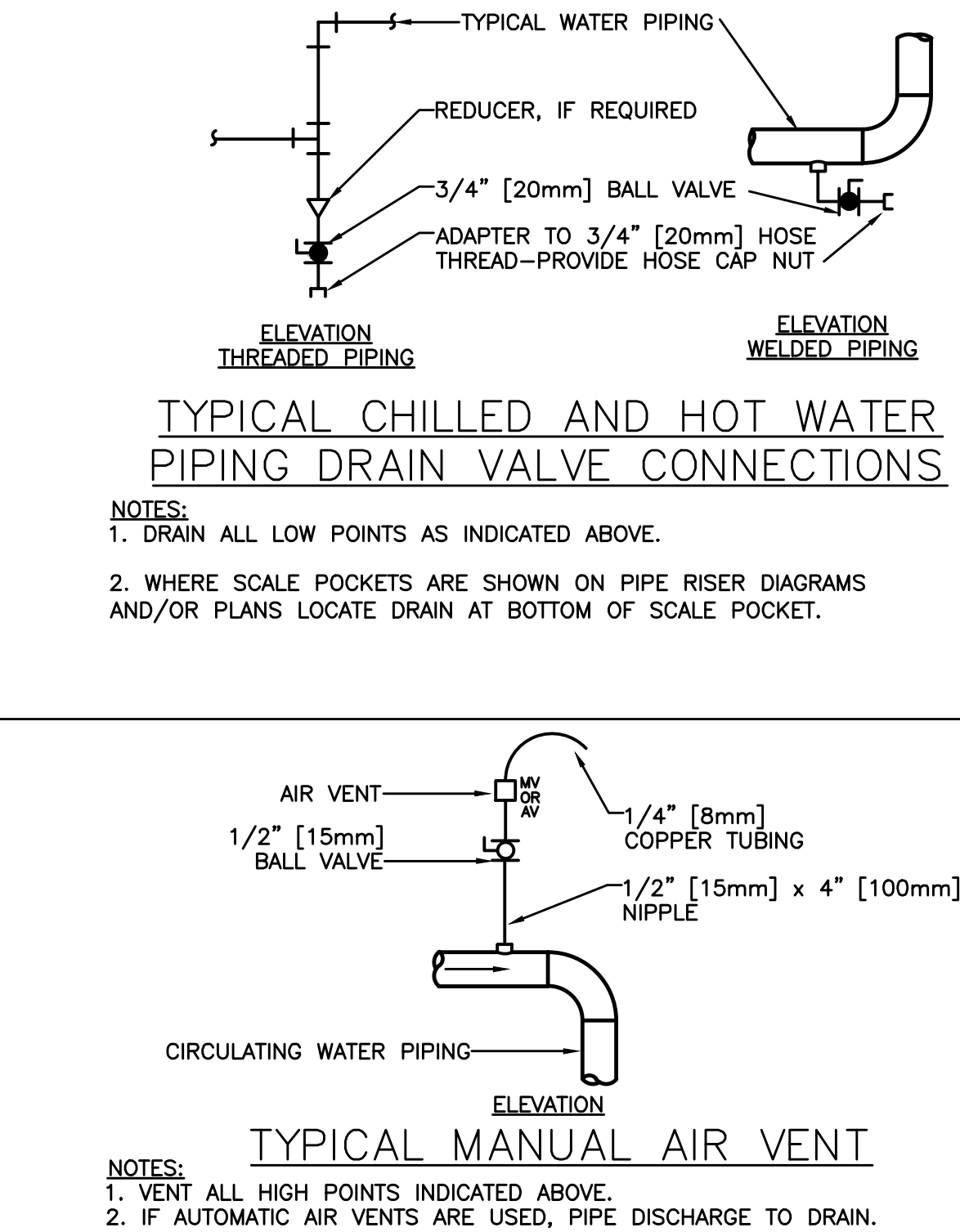


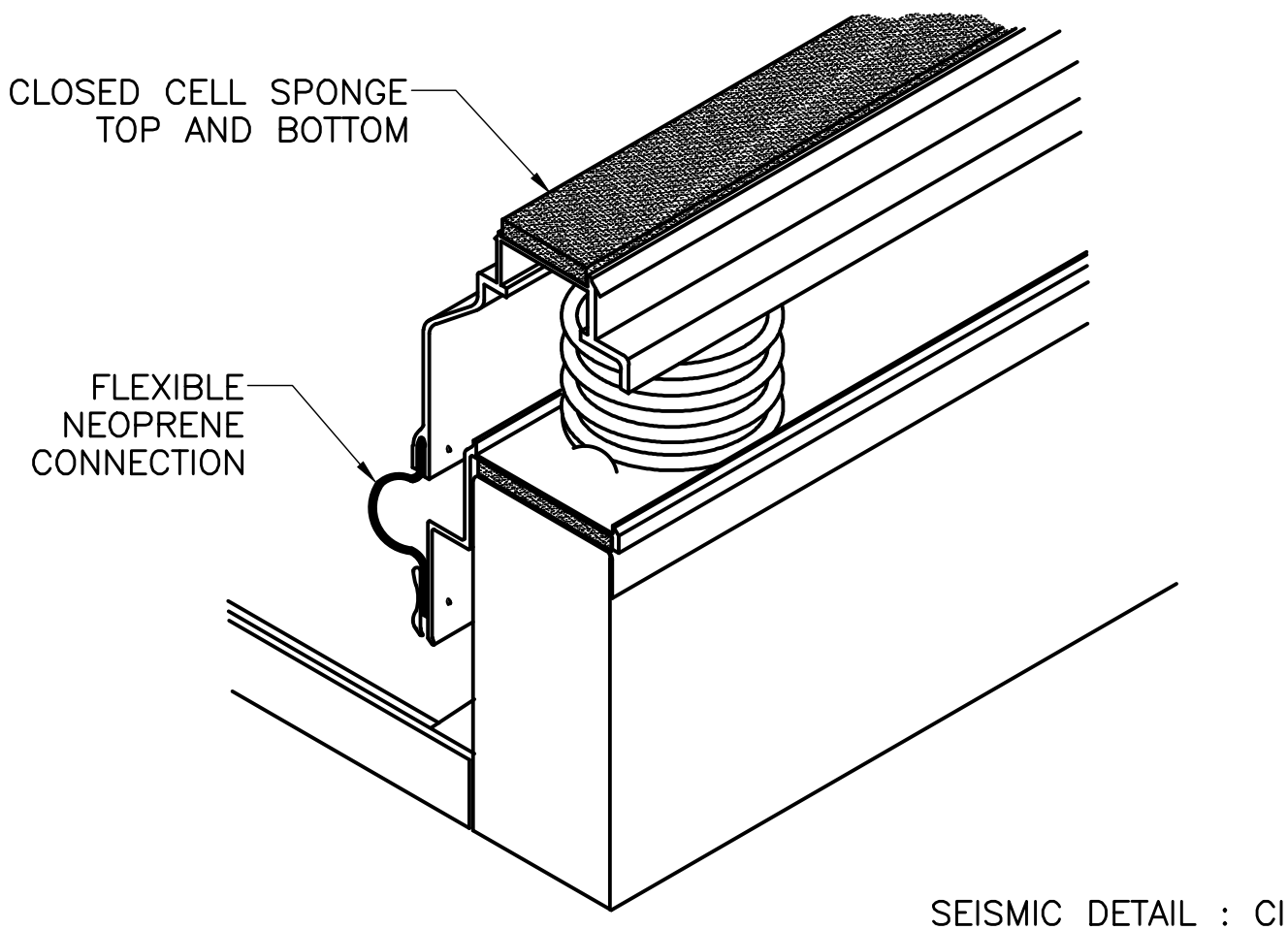
1 WATER COILS - PIPING CONNECTIONS



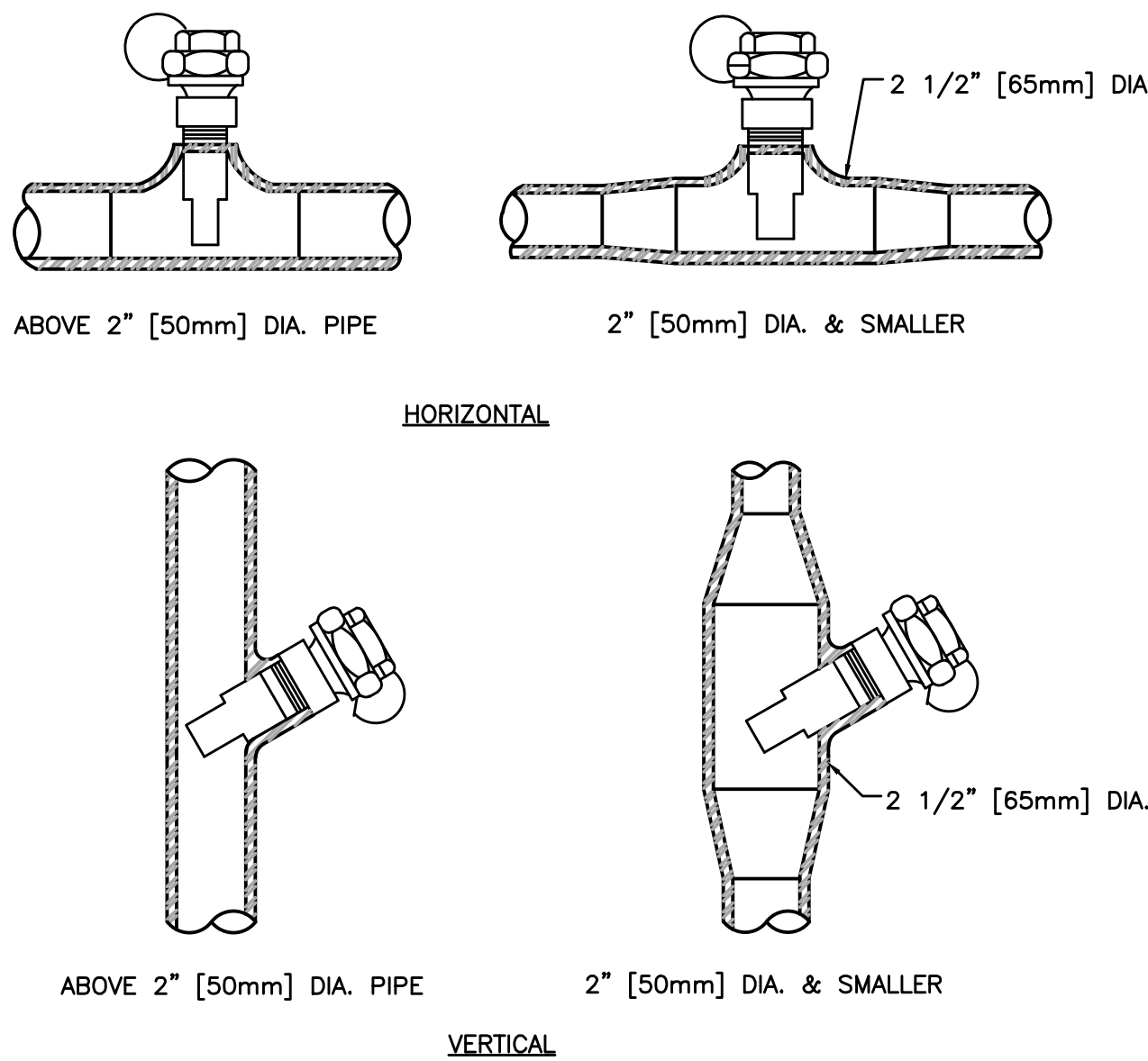
3 DRAIN VALVE AND AIR VENT CONNECTIONS (HYDRONIC SYSTEMS)



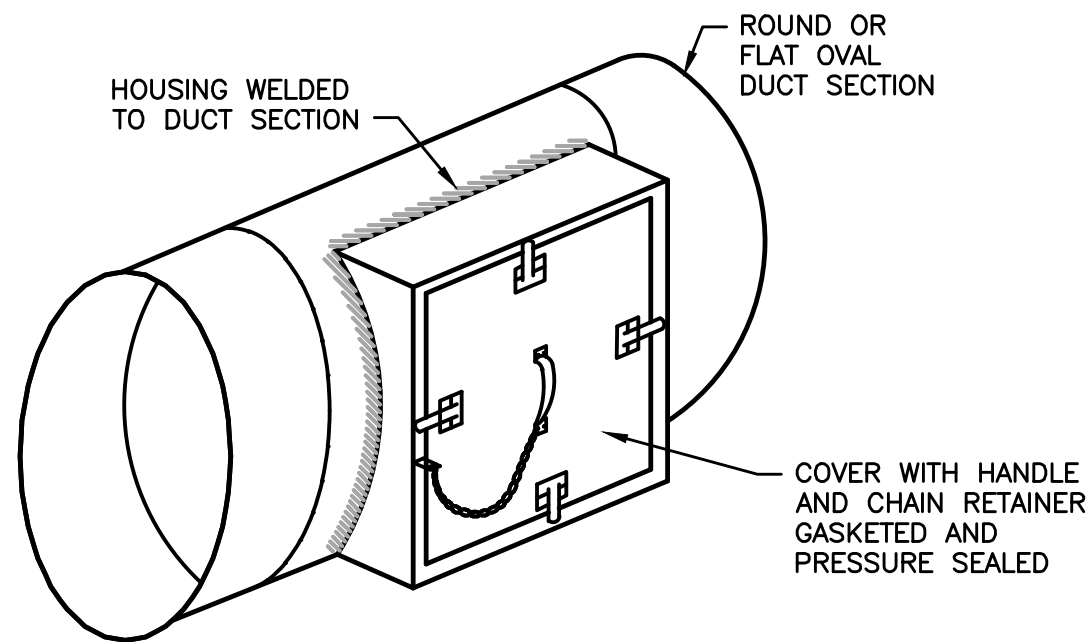
3 ROOF AHU CURB MOUNTED BASE



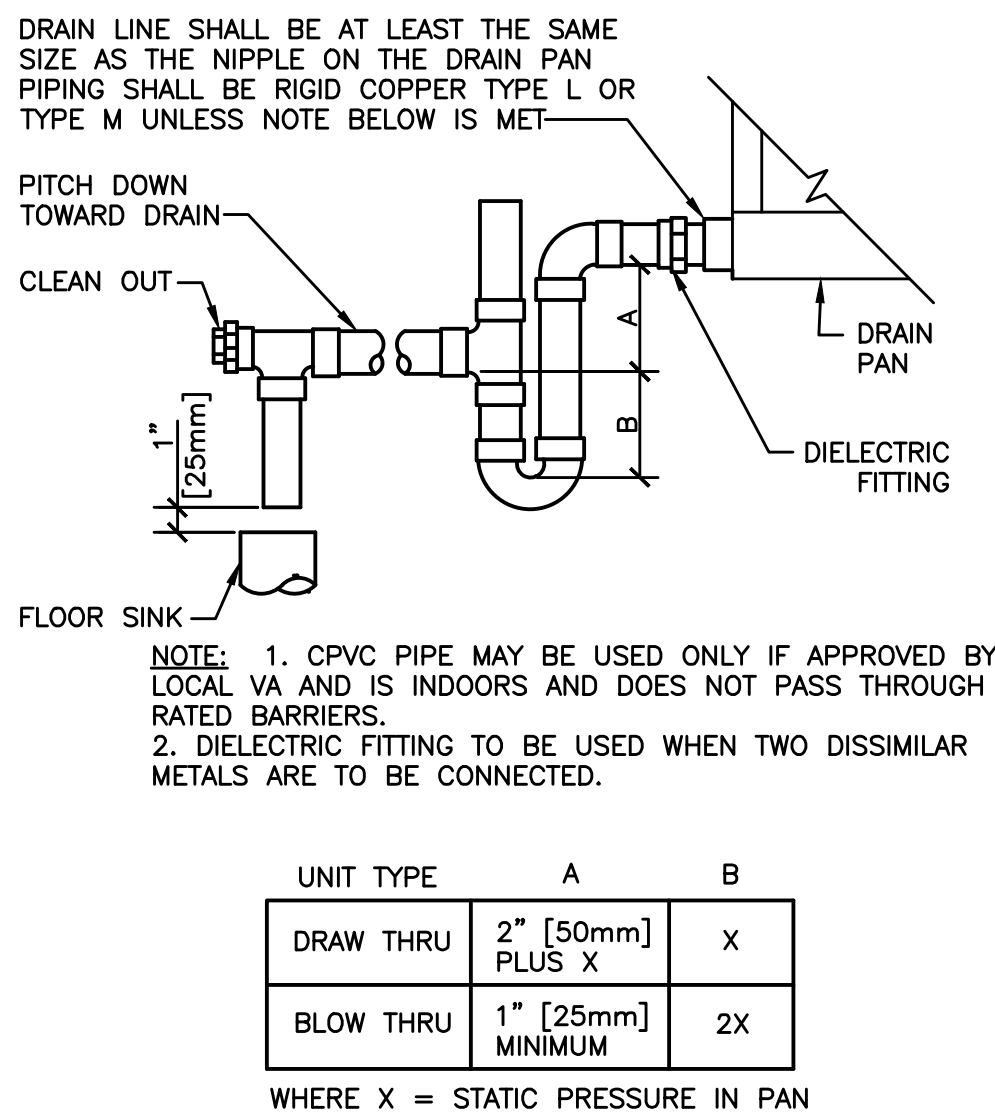
4 INSTALLATION OF THERMOMETER WELLS



5 ACCESS SECTION FOR ROUND/OVAL DUCT

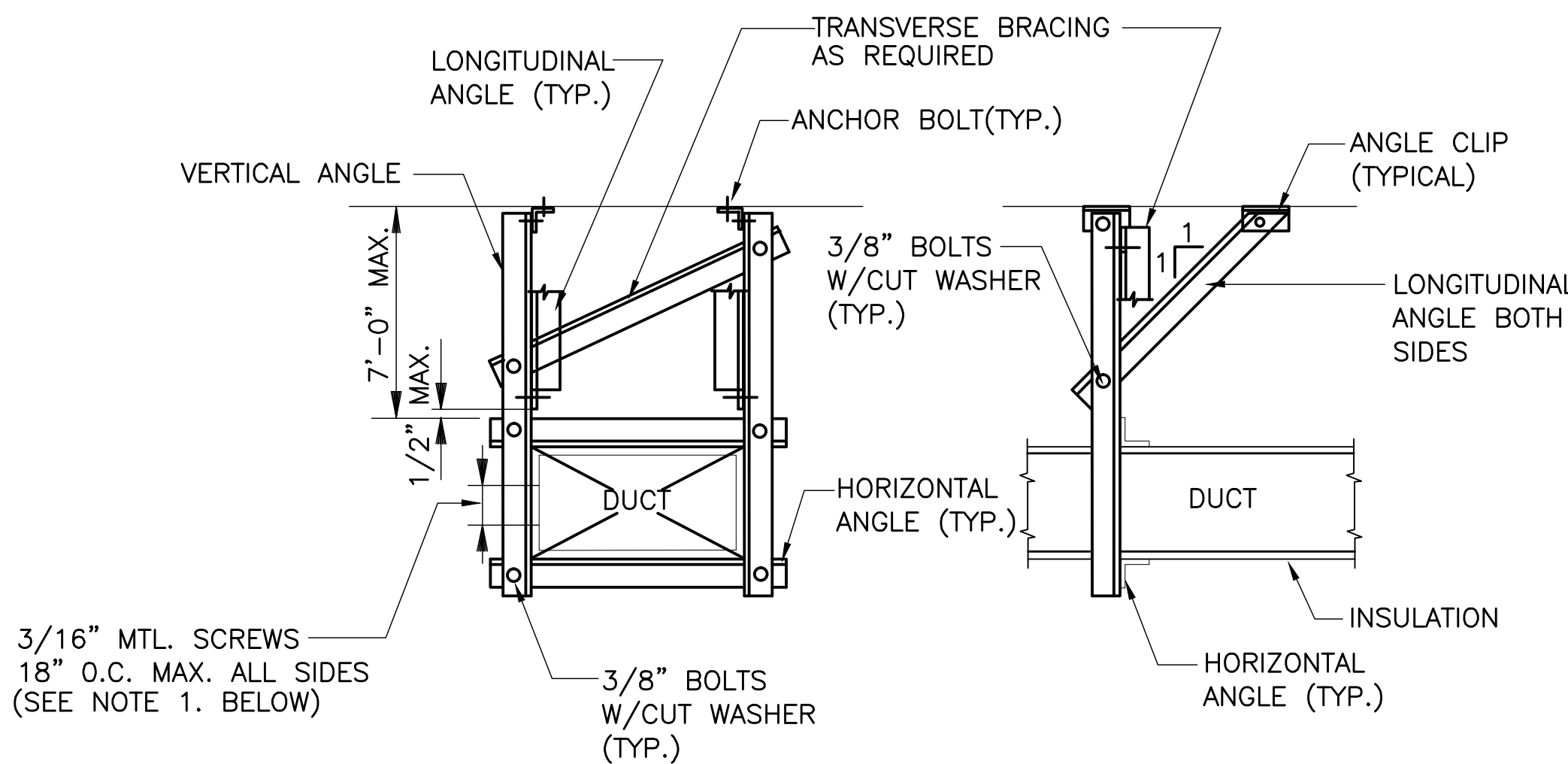


6 AIR HANDLING UNIT DRAIN TRAP DETAIL



- NOTES:
- ROUND DUCT SUPPORTS SHALL BE SIMILAR, EXCEPT (1) 3/16" METAL SCREW ON EACH OF THE FOUR QUADRANTS.
 - DUCT SUPPORT INTERVALS SHALL BE AS FOLLOWS:
TRANSVERSE SWAY BRACING: MAX. EVERY 30' O.C. EACH HORIZ. TURN GREATER THAN 45°, AND AT END OF EACH RUN.
LONGITUDINAL SWAY BRACING: MAX. EVERY 60" O.C.
 - TRANSVERSE BRACING MAY SERVE AS HORZ. BRACING OF PERPENDICULAR INTERSECTING DUCTS IF INSTALLED WITHIN 4' OF INTERSECTION AND SIZED FOR LARGER DUCT.
 - WALLS WHICH DUCTS PENETRATE MAY SERVE AS TRANSVERSE BRACING.
 - BOLT SIZE SHALL BE 1/4" UP TO 54" DUCT SIZE AND 3/8" FOR 54" AND GREATER DUCT SIZE.

7 TYPICAL SEISMIC BRACING FOR RECTANGULAR DUCT



MAX. DUCT DIMENSION	BRACING ANGLES		ANGLE CLIP	CONC. ANCHOR OR INSERT
	VERTICAL	ALL OTHERS		
UP TO 60"	4x4x12GA	3x3x16GA	3x3x 1/4	1/2"
84"	4x4x 1/4"	4x4x12GA	4x4x 1/2	5/8"
96"	5x3x 1/4"	4x4x12GA	4x4x 1/2	5/8"



Revisions		Remarks
No.	Date	

Hernandez Consulting
ALBERT ARCHITECTURE



Allen&Hoshall
engineering since 1915

Approved	
Title	Signature

Drawing Title	
MECHANICAL - DETAILS	
Approved Service Engineer	
Approved Service Director	

Project Title	
Southeast VA Health Care System (SLVHCS) A&E Design Urgent Care	
Building Number	
Checked WLP	
Drawn WLP	
Location 1601 Perdido Street, New Orleans, LA	

Date
January 18, 2013
Project No.
VA256-C-0231
DRAWING NO.
M302
Dep. 1 OF 1

