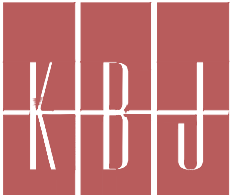


Baker

Baker/Mellon Stuart Const. , Inc.
111 North Orange Avenue
Suite 625
Orlando, Florida 32801



ARCHITECTS

KBJ Architects, Inc.
AAC00001
510 North Julia Street
Jacksonville, Florida 32202

08/24/98	PLAN REVISIONS
Date	Revisions

Notes:

Seal

Drawing Title
PARTIAL FLOOR PLAN
- ZONE D - POWER

Graphic Scale
0' 2' 4' 8' 16' 24'
SCALE: 1/8" = 1'-0"

Approved: Area Project Manager

Project Title
VA OUTPATIENT CLINIC
BREVARD COUNTY

Location
BREVARD COUNTY, FLORIDA

Drawn: MJR
Checked: CW/JHP
Date: 7-30-98

VA Project Number
673-097

KBJ Project Number
98006

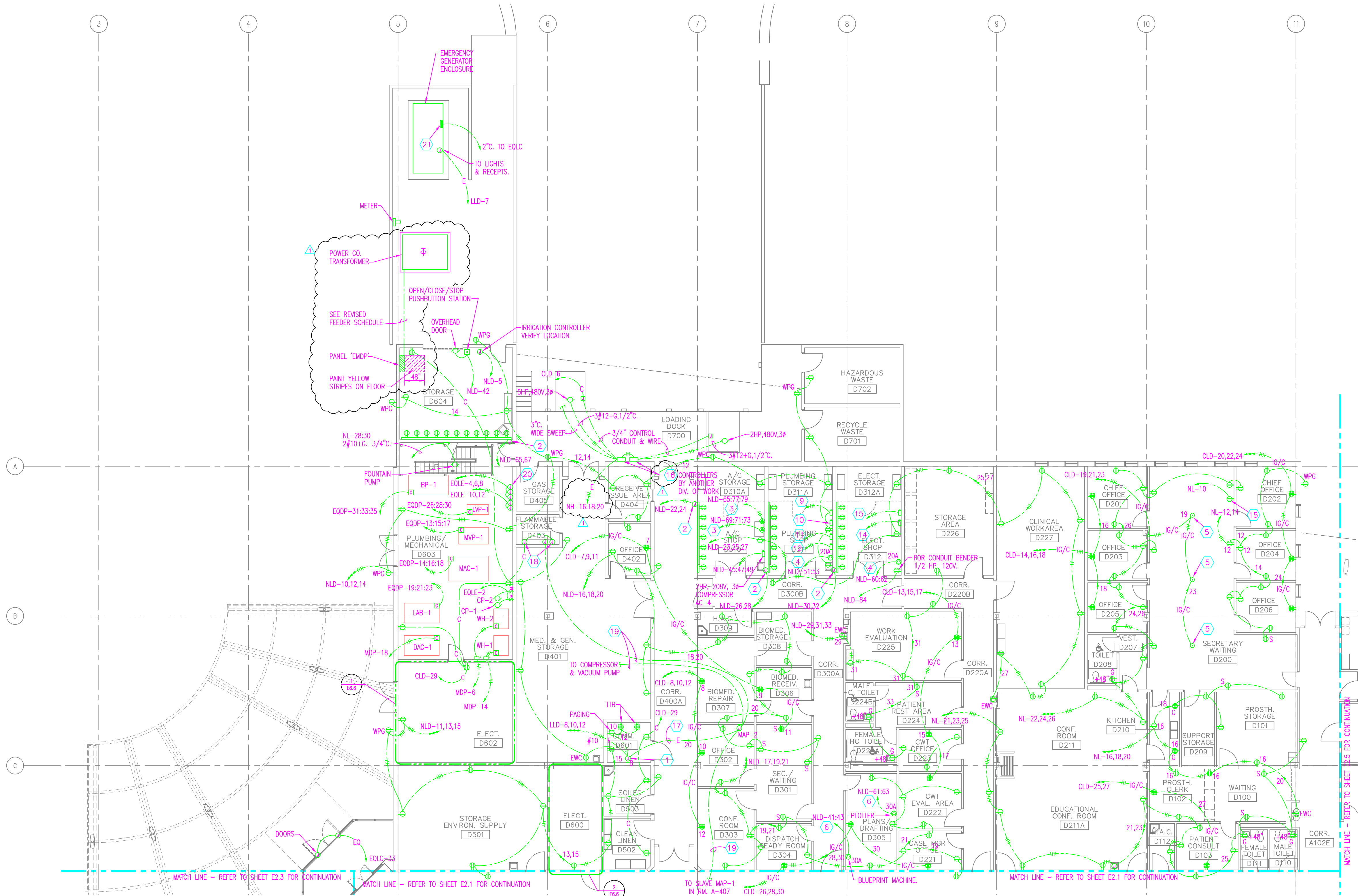
Building Number
E2.4

Drawing Number

FINAL SUBMITTAL

Office of
Facilities
Management

Department of
Veterans Affairs



GENERAL NOTES:

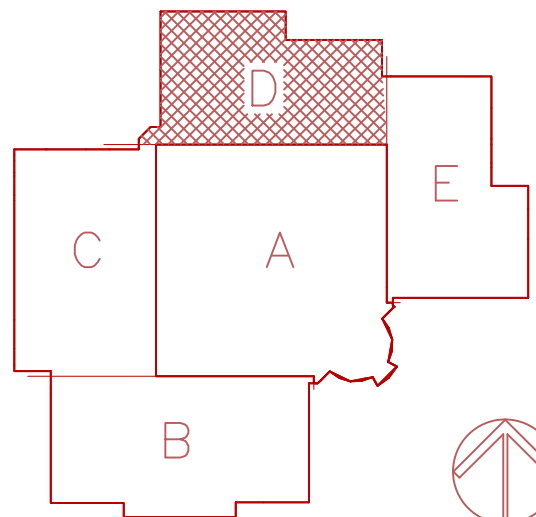
- 1) REFER TO SHEET E0.1 FOR GENERAL NOTES.
- 2) REFER TO SPECIFICATIONS.

HEX NOTES:

- 1) FIRE ALARM POWER SUPPLIES, PROVIDE 120V POWER CONNECTION TO EACH.
- 2) PROVIDE FLUSH JUNCTION BOX WITH WIREMOLD ADAPTER AND WIREMOLD #3000 SERIES WITH 20A OUTLETS 24" O.C.
- 3) 3#8 AND GND, 3/4"C.
- 4) 2#12 AND GND., 3/4"C.
- 5) PROVIDE FLUSH FLOOR QUAD 20A ISOLATED GROUND RECEPTACLES. WIREMOLD #RFB4-40B/RAFM11.
- 6) 2#10 AND GND., 3/4"C.
- 7) NOT USED
- 8) NOT USED

- 9) DRILL PRESS, 3/4HP, 208V, 3ø, 3#12 AND GND IN 3/4"C. NLD-48:50:52.
- 10) GRINDER, 1/2HP, 208V, 3ø, 3#12 AND GND IN 3/4"C.
- 11) HACKSAW, 1HP, 208V, 3ø, 3#12 AND GND IN 3/4"C. NLD-72:74:76.
- 12) PIPE THREADING MACHINE, 1HP, 208V, 3ø, 3#12 AND GND IN 3/4"C. NLD-78:80:82.
- 13) GRINDER, 1/2HP, 208V, 3ø, 3#12 AND GND IN 3/4"C. NLD-55:57:59.
- 14) DRILL PRESS, 3/4HP, 208V, 3ø, 3#12 AND GND IN 3/4"C. NLD-2:4:6.
- 15) 20AMP OUTLET FOR COPIER. VERIFY LOCATION PRIOR TO ROUGH-IN.
- 16) DOCK EQUIPMENT CONTROL PANELS ASSUMED SET UP AND LOCATIONS. VERIFY LOCATION AND ARRANGEMENT WITH APPROVED SHOP DRAWINGS PRIOR TO ROUGH-IN.
- 17) 120V CONNECTION FOR MASTER MEDICAL GAS ALARM.
- 18) 120V CONNECTION TO SOLENOID SWITCH OVER.
- 19) PROVIDE LOW VOLTAGE ALARM WIRING PER MEDICAL GAS MANUFACTURER'S RECOMMENDATIONS, 3/4"C.

- 20) PROVIDE 120V CONNECTION TO AIR COMPRESSOR DRYERS, COORDINATE EXACT LOCATION WITH EQUIPMENT INSTALLER PRIOR TO ROUGH-IN.
- 21) POWER CENTER PROVIDED BY TAW. DIV. 16 CONTRACTOR SHALL PROVIDE POWER WIRING AND CONNECTIONS FROM POWER CENTER TO BATTERY CHARGER AND BLOCK HEATERS AS REQUIRED.



KEY PLAN

