





three inches = one foot

one and one half inches = one foot

one inch = one foot

three quarters inch = one foot

one half inch = one foot

three eighths inch = one foot

one quarter inch = one foot

three eighths inch = one foot

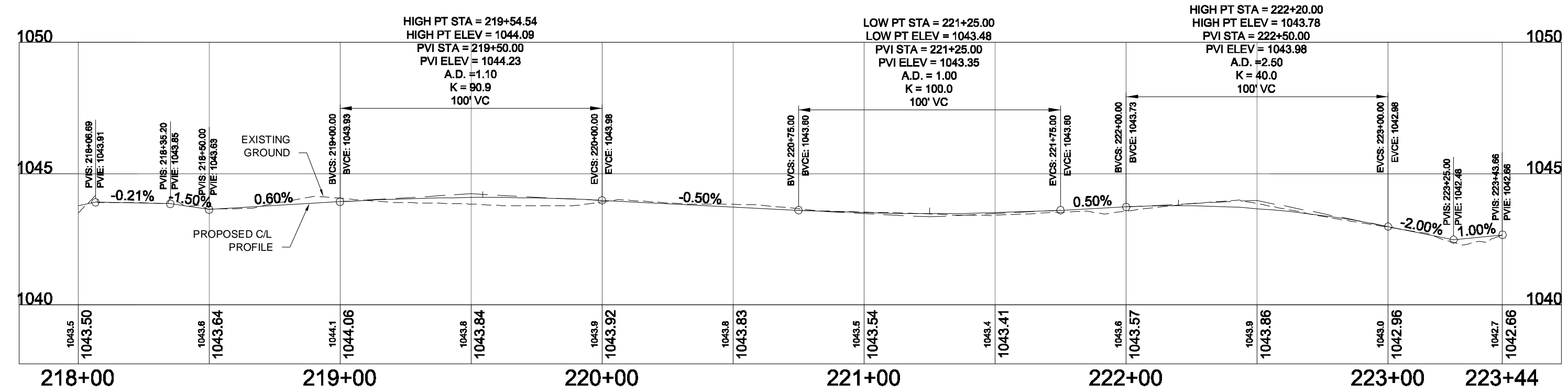
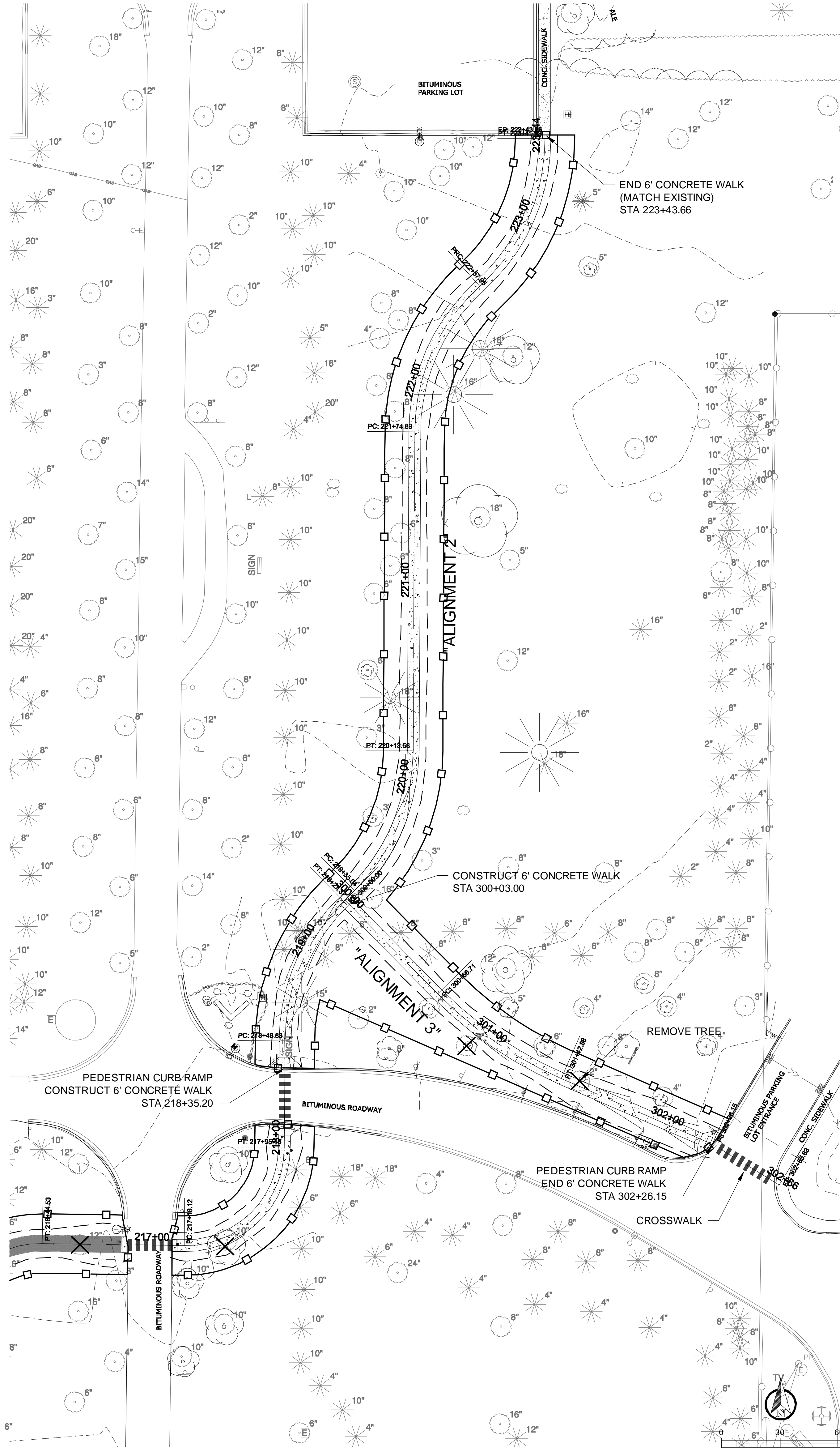
one quarter inch = one foot

one eighth inch = one foot

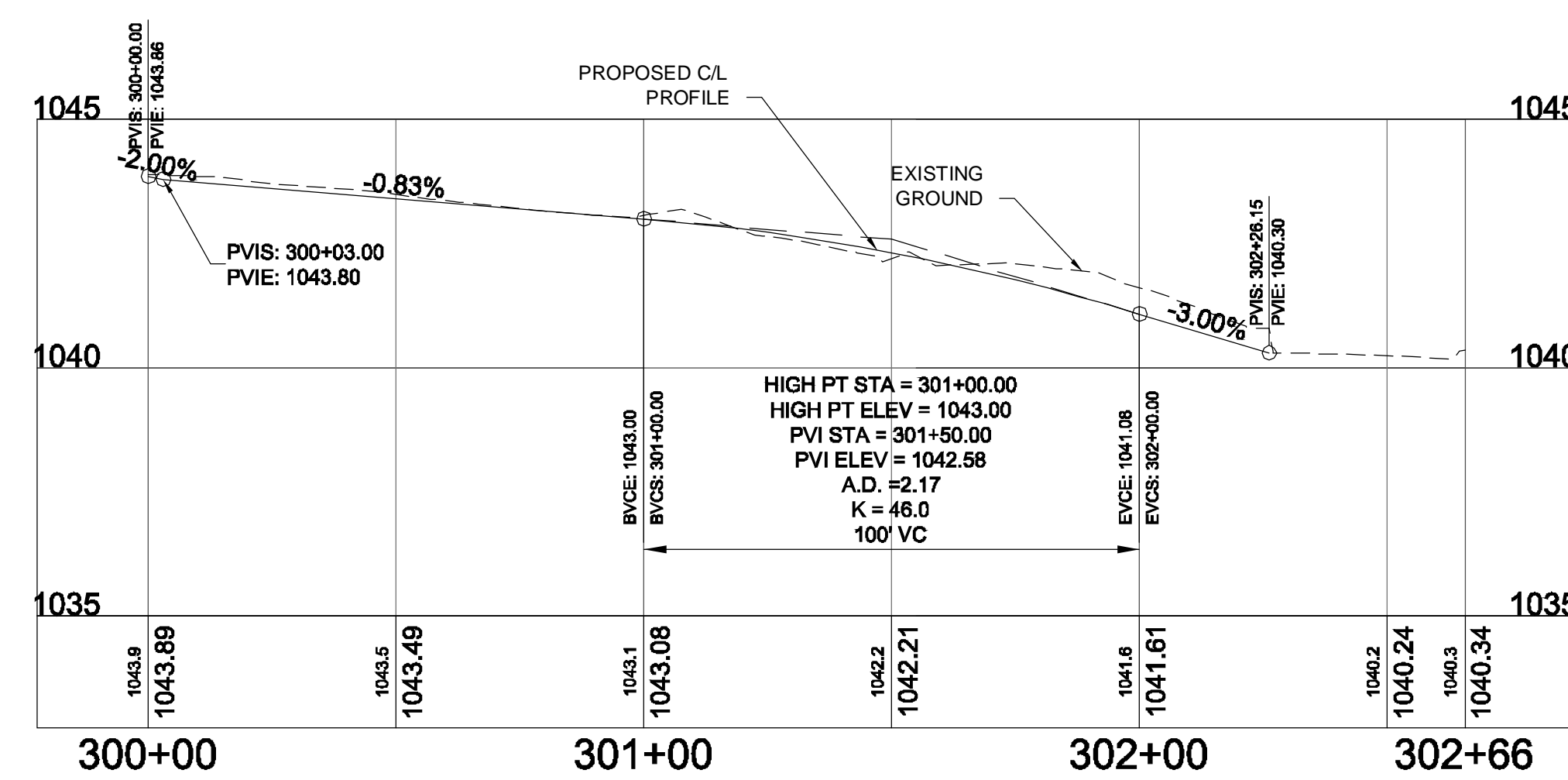
one eighth inch = one foot

one eighth inch = one foot

F:\Design Tree Engineering Projects\022 - St. Cloud VA Medical Center\02212002 - C-BASE PROPOSED.dwg 10-17-12 09:29:15 AM gmd



"ALIGNMENT 2" H: 1" = 30', V: 1" = 5'



"ALIGNMENT 3" H: 1" = 30', V: 1" = 5'

HORIZONTAL CURVE DATA - "ALIGNMENT 2"									
Number	Length	Radius	Start Station	End Station	Chord length	Chord Direction	Start Direction	End Direction	External Tangent
13	78.54	100.00'	218+49.83	219+27.37	76.54	N22°47'09.97"E	N00°17'09.97"E	N45°17'09.97"E	41.42'
14	78.54	100.00'	219+35.04	220+13.58	76.54	N22°47'09.97"E	N45°17'09.97"E	N00°17'09.97"E	41.42'
15	83.05	100.00'	221+74.89	222+57.95	80.69	N24°04'43.91"E	N00°17'09.97"E	N47°52'17.85"E	44.09'
16	83.95	100.00'	222+57.95	223+41.89	81.50	N23°49'20.38"E	N47°52'17.85"E	N00°13'37.10"W	44.63'

HORIZONTAL CURVE DATA - "ALIGNMENT 3"									
Number	Length	Radius	Start Station	End Station	Chord length	Chord Direction	Start Direction	End Direction	External Tangent
1	76.17	200.00'	300+66.71	301+42.88	75.71	S55°37'26.26"E	S44°42'50.03"E	S66°32'02.49"E	38.55'

NOTES:

1. TYPICAL SECTION FOR "ALIGNMENT 2" (SEE DETAIL 10/C4.1) 6" CONCRETE WALK, 2% CROWN UNLESS NOTED OTHERWISE.
2. TYPICAL SECTION FOR "ALIGNMENT 3" (SEE DETAIL 10/C4.1) 6" CONCRETE WALK, 2% CROWN UNLESS NOTED OTHERWISE.

LEGEND

- CONCRETE WALK
- BITUMINOUS TRAIL
- GRADING LIMITS
- ORANGE CONSTRUCTION FENCE

100% CD'S - FOR CONSTRUCTION

Scale: As Shown



Design Tree  
ENGINEERING AND  
LAND SURVEYING

Alexandria Office  
120 17th Avenue W.  
Alexandria, MN 56308  
(320) 762-1290

St. Cloud Office  
3359 West St. Germain, Suite 250  
St. Cloud, MN 56301  
(320) 217-5557



Alexandria  
525 Broadway Street  
Alexandria, MN 56308  
phone 320.759.9030  
facsimile 320.759.9062

www.jlgarchitects.com  
copyright © 2012

STAMP/SEAL

I HEREBY CERTIFY THAT THIS PLAN,  
SPECIFICATION, OR REPORT WAS PREPARED  
BY ME OR UNDER MY DIRECT SUPERVISION,  
AND THAT I AM A DULY LICENSED ENGINEER  
UNDER THE LAWS OF THE STATE OF  
MINNESOTA.

GINA M. DULLINGER 45489  
DATE: 10/16/2012 REG. NO.

Drawing Title  
PLAN AND PROFILE

Approved Project Director

Project Title  
CREATE CAMPUS WALKING  
PATH

Location  
VA MEDICAL CENTER, ST. CLOUD, MN 56303

Date  
10/16/2012

Checked  
DJF

Drawn  
GMD

Project Number  
02212002

Building Number

Drawing Number  
C2.2

Dwg 6 of 24

