

VA FORM 08-6231

three inches = one foot

one and one half inches = one foot

one inch = one foot

three quarters inch = one foot

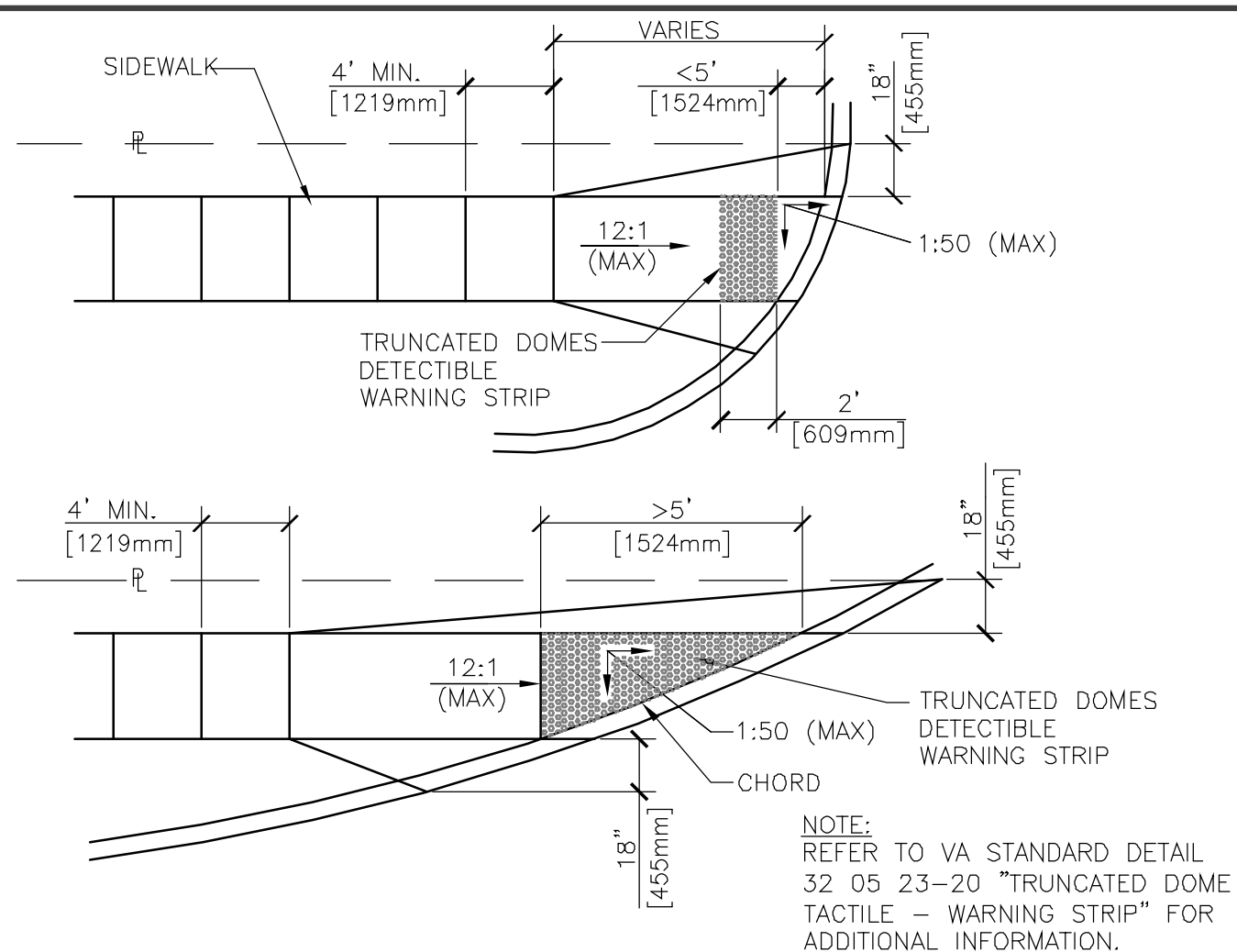
one half inch = one foot

three eighths inch = one foot

one quarter inch = one foot

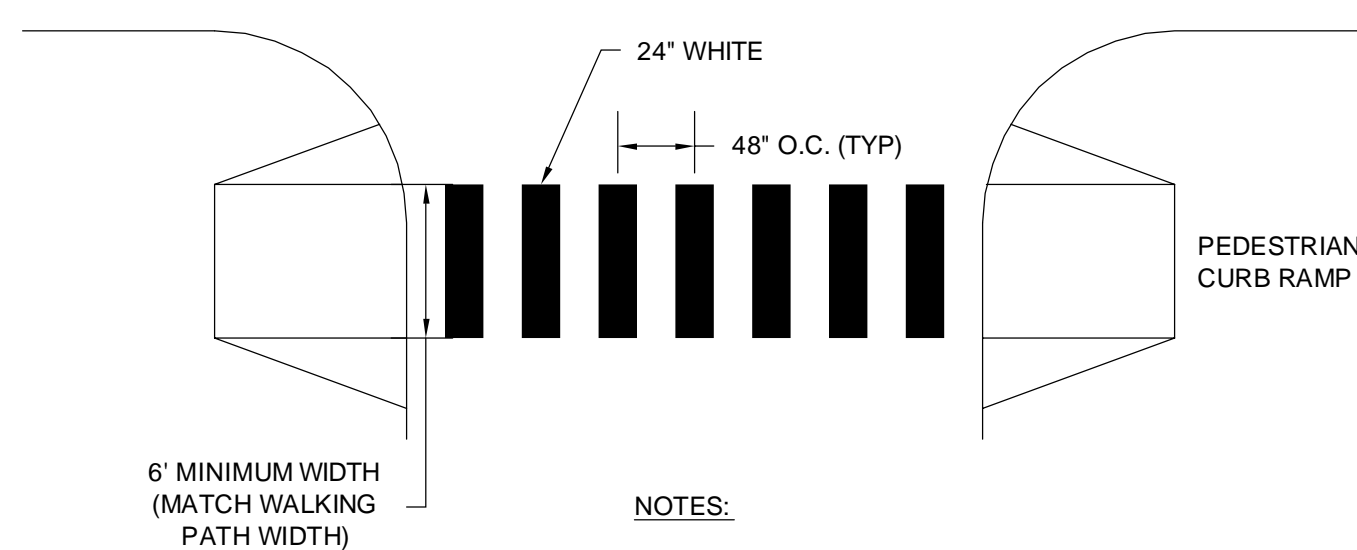
one eighth inch = one foot

10-17-12 09:34:50 AM jmd



1 CURB ACCESS RAMP ALTERNATIVES

NTS

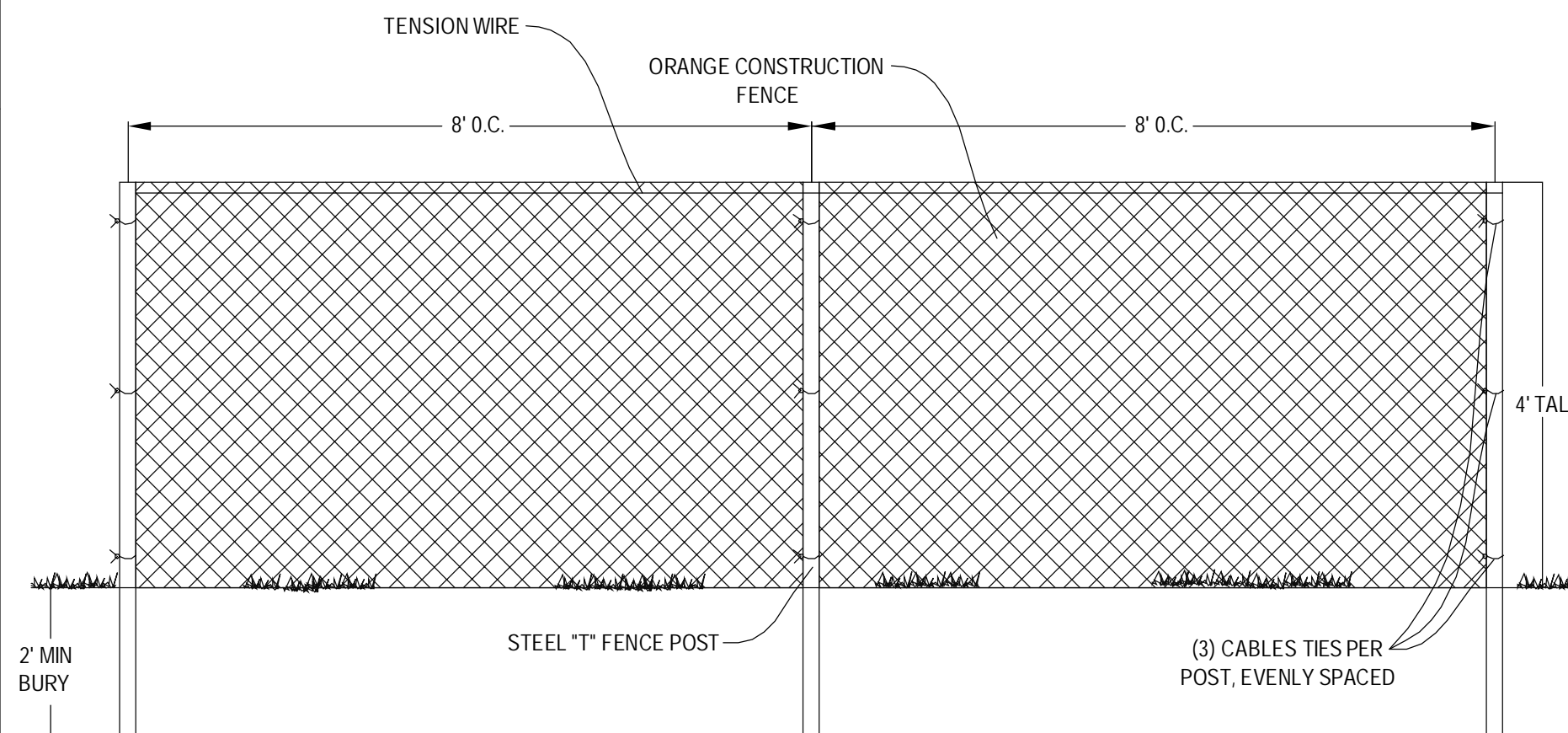


NOTES:

1. LONGITUDINAL LINES SHALL BE SOLID WHITE IN COLOR, HAVE A WIDTH OF 24 INCHES, AND BE SPACED 4 FEET APART ON CENTER. THE MARKING LOCATION OF THE LONGITUDINAL LINES SHOULD AVOID THE WHEEL PATHS WHENEVER POSSIBLE.
2. CROSSWALK MARKINGS SHALL BE INSTALLED USING A PAINT SUITABLE FOR APPLICATION ON BITUMINOUS SURFACES. ALL CROSSWALK MARKINGS SHALL ALSO CONSIST OF HIGH REFLECTIVITY MATERIALS.

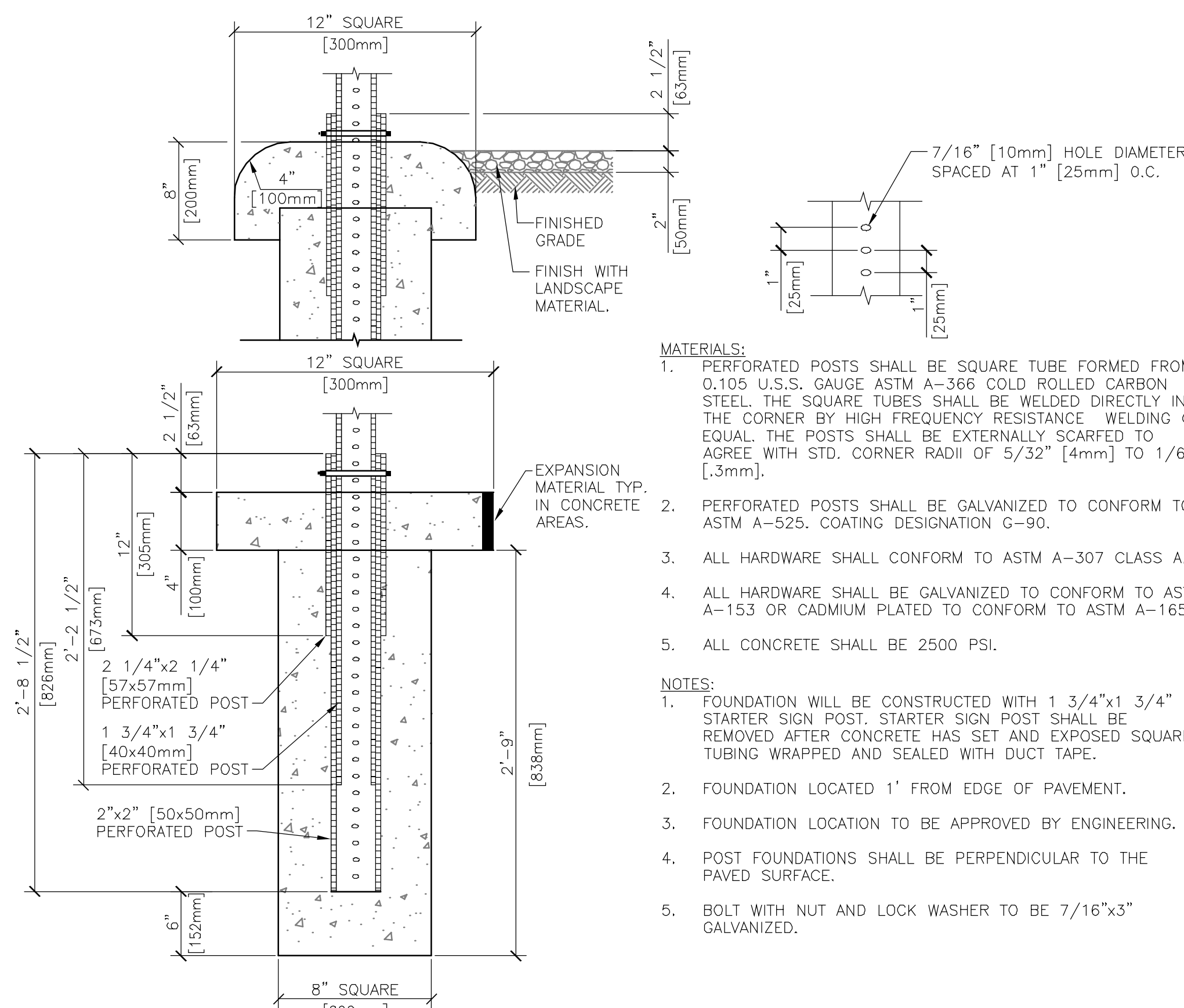
2 PAVEMENT MARKING - CROSSWALK

NTS



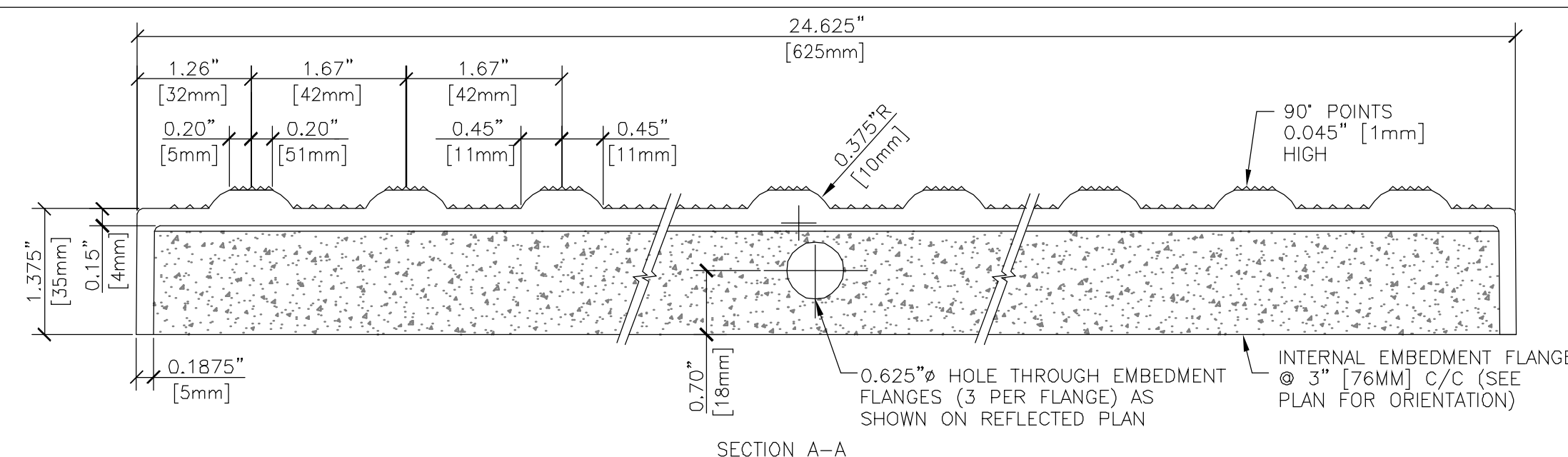
3 ORANGE CONSTRUCTION FENCE DETAIL

NTS

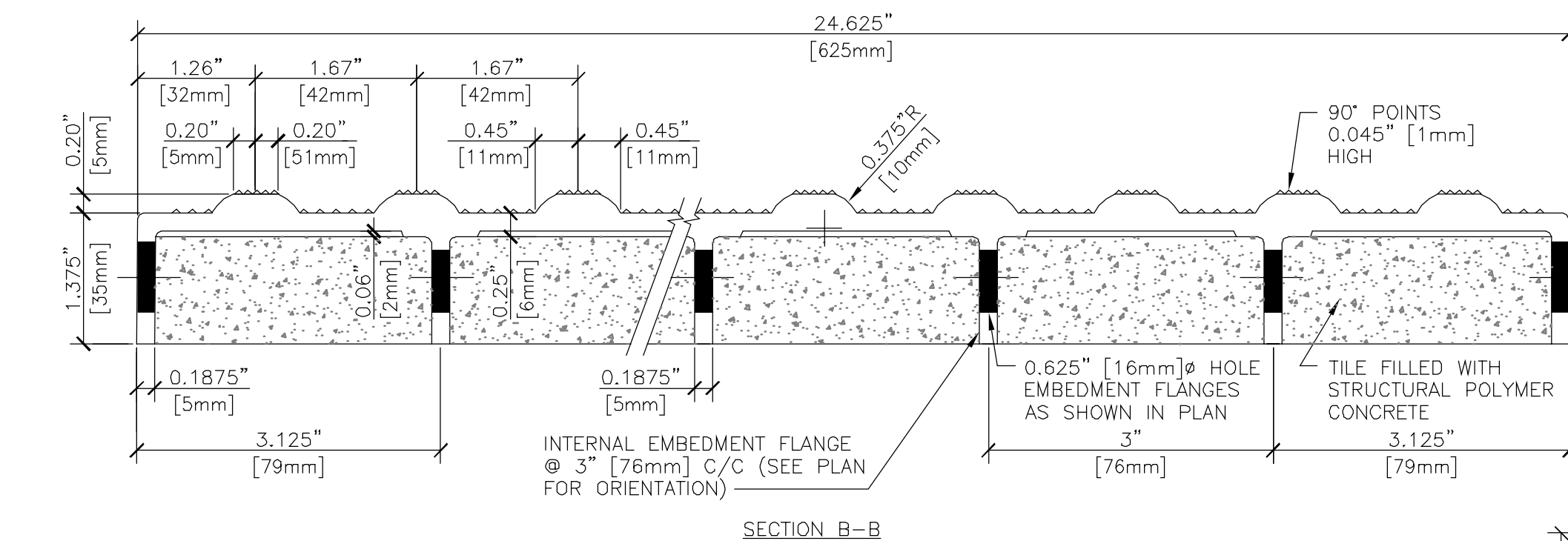


4 SIGN POST DETAIL SQUARE TUBE FOUNDATION

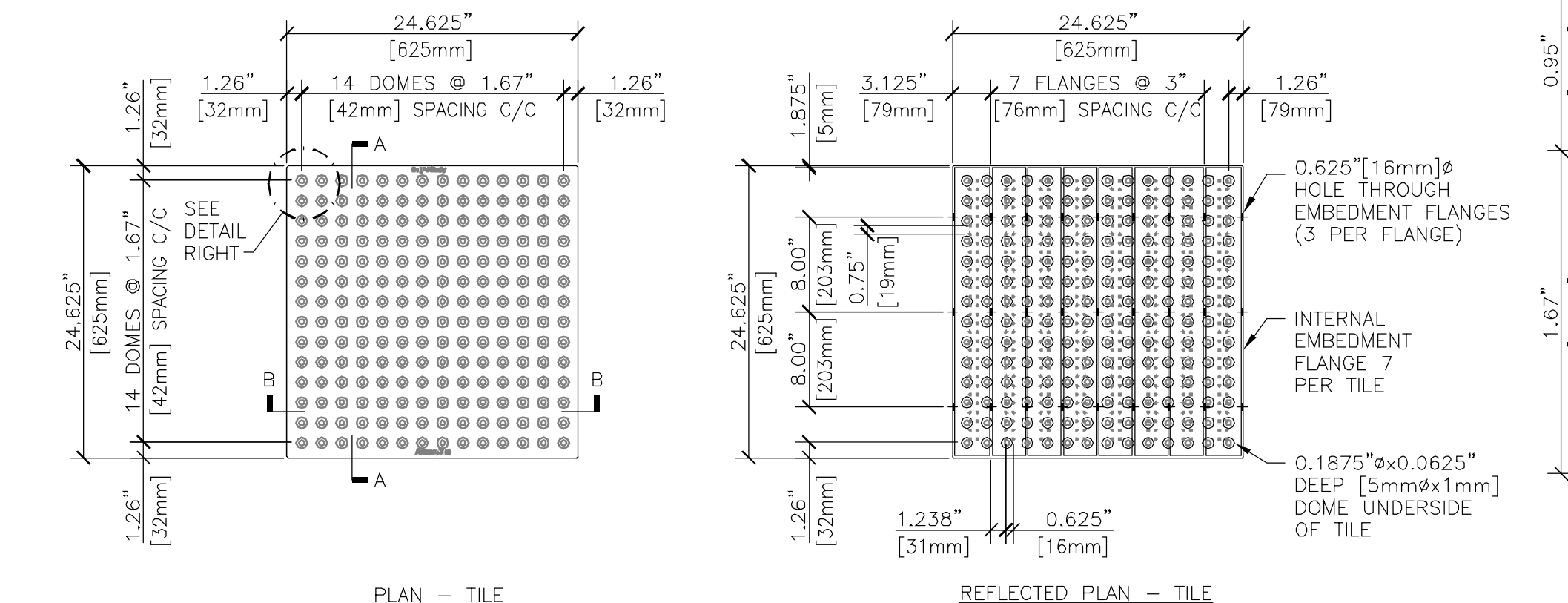
NTS



SECTION A-A



SECTION B-B

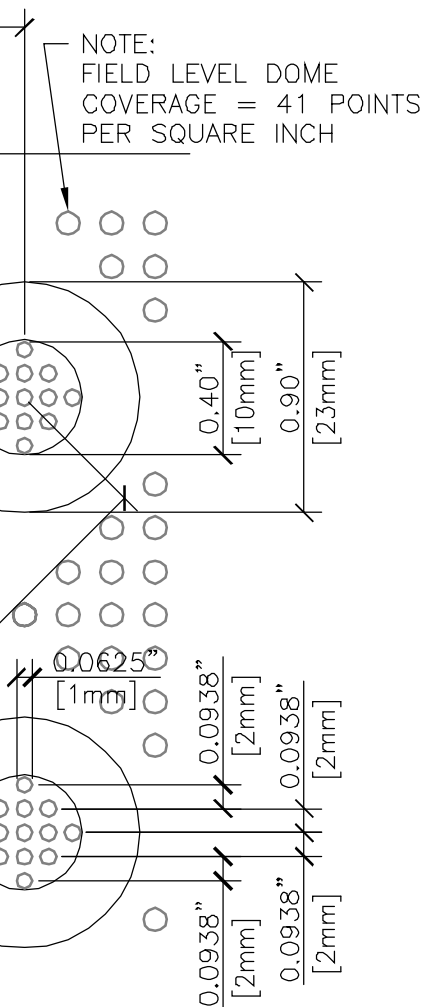


PLAN - TILE

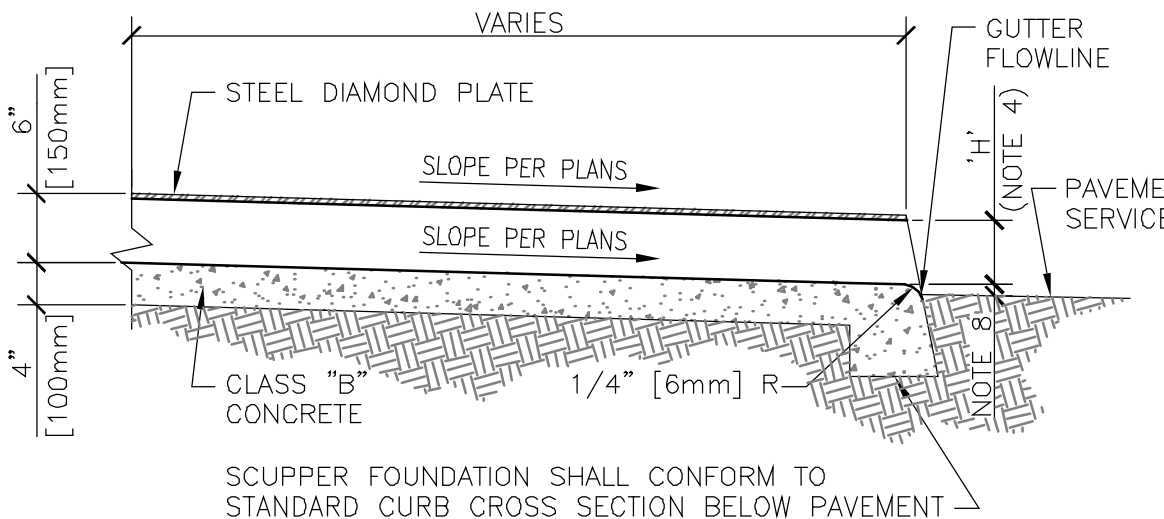
REFLECTED PLAN - TILE

DETECTABLE WARNING NOTES:
THE DETECTABLE WARNING STRIP MUST COVER THE ENTIRE WIDTH OF THE RAMP OPENING, EXCLUDING THE WINGS. ALL DOMES MUST BE ALIGNED IN THE DIRECTION OF TRAVEL. ONE CORNER OF THE LEADING EDGE OF THE DETECTABLE WARNING MAY BE MORE THAN 5 FEET FROM THE BACK OF THE CURB. WHEN LOCATED ALONG A CURB RETURN, THE LEADING EDGE OF THE DETECTABLE WARNING MAY BE DEFINED BY THE CHORD DRAWN BETWEEN THE LEADING EDGES OF THE RAMP OPENING.

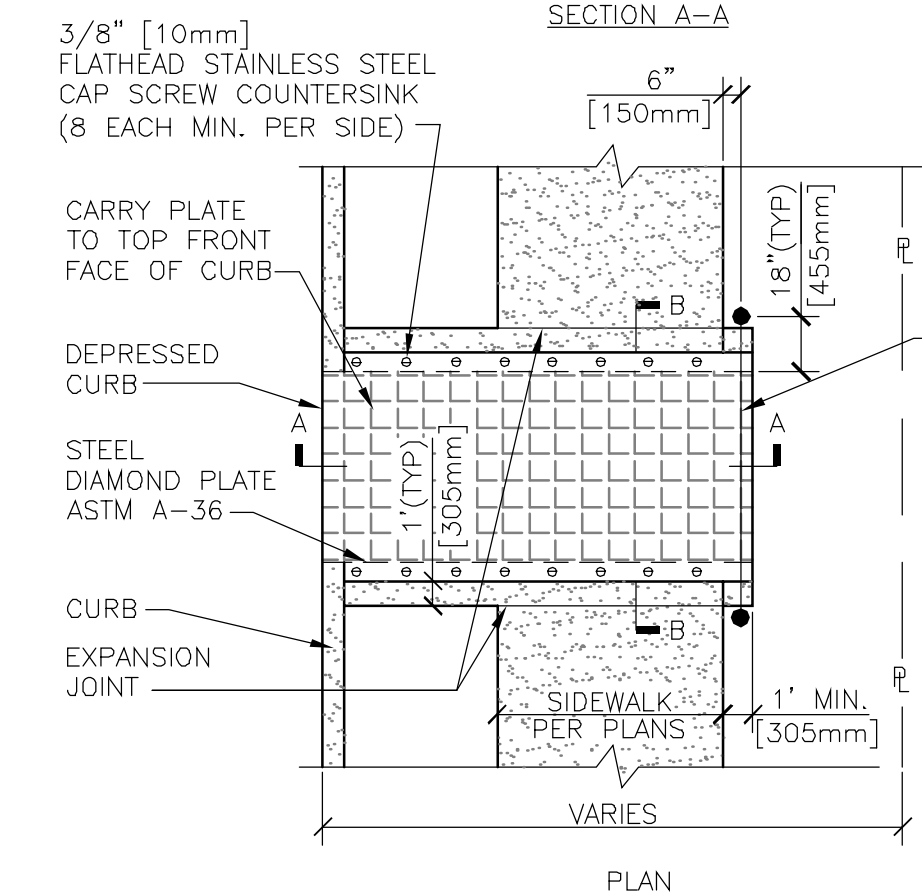
DETECTABLE WARNING STRIP TO BE CAST IRON, CONSISTENT WITH EXISTING DETECTABLE WARNING STRIPS ON SITE.



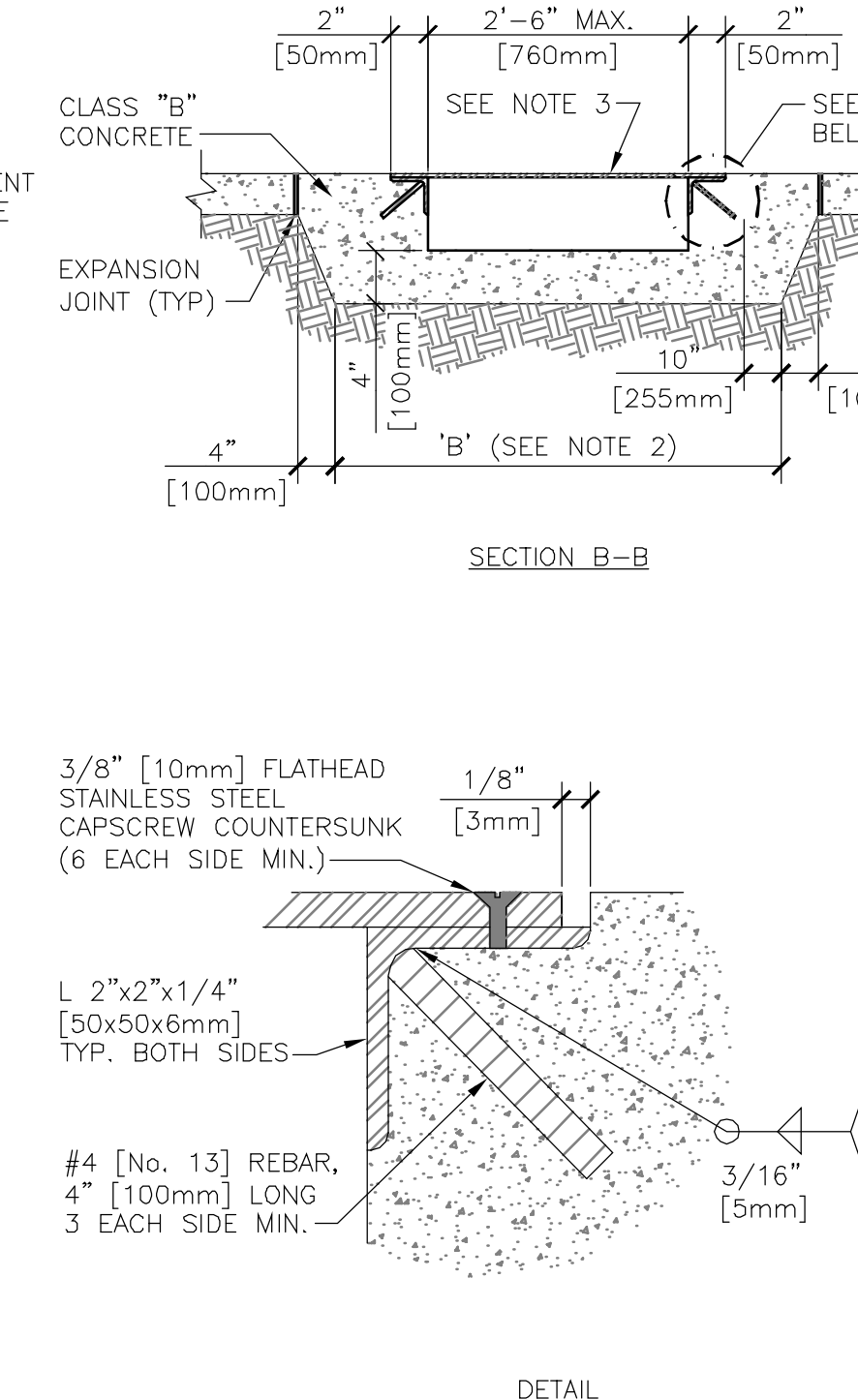
DETAIL



SECTION A-A



PLAN



DETAIL

NOTES:

1. (—) INDICATES DIRECTION OF FLOW.
2. DIMENSION 'B' EQUALS 'A'+1' [305mm].
3. 1/2" [13mm] THICK STEEL DIAMOND PLATE ASTM A-36. STEEL DIAMOND PLATE SHALL BE GIVEN ONE SHOP COAT OF PAINT NO.1 PER VA SPECIFICATIONS. EXPOSED METAL SHALL BE PAINTED WITH TWO COATS OF SSPC PAINT NO. 5 PER VA SPECIFICATIONS.
4. 'H' EQUALS CURB FACE HEIGHT. DIMENSION TO BE NOTED ON PLANS OR ESTABLISHED IN THE FIELD.
5. FOR CURB AND GUTTER, USE 2' [610mm] TRANSITIONS TO VERTICAL CURB.
6. FOR MULTIPLE SCUPPERS PROVIDE 4" [100mm] BETWEEN ADJACENT PANELS OF STEEL DIAMOND PLATE. INTERMEDIATE POSTS FOR BARRICADE RAILINGS SHALL BE PLACED MIDWAY IN 4" [100mm] AREA BETWEEN ADJACENT PANELS.
7. STEEL DIAMOND PLATE SHALL BE DELIVERED AS ONE PIECE, CONFORMING TO THE REQUIRED SCUPPER DIMENSIONS. PLATES SHALL NOT BE SPLICED.
8. PROVIDE A MIN. 1" [25mm] LIP BETWEEN FLOW LINE OF SCUPPER AND PAVEMENT SURFACE.

5 SIDEWALK SCUPPER - TYPE 2

NTS



Design Tree
ENGINEERING AND
LAND SURVEYING

Alexandria Office
120 17th Avenue W.
Alexandria, MN 56308
(320) 762-1290

St. Cloud Office
3339 West St. Germain, Suite 250
St. Cloud, MN 56301
(320) 217-5557



Alexandria
525 Broadway Street
Alexandria, MN 56308
phone 320.759.9030
facsimile 320.759.9062

www.jlgarchitects.com
copyright © 2012

STAMP/SEAL
I HEREBY CERTIFY THAT THIS PLAN,
SPECIFICATION, OR REPORT WAS PREPARED
BY ME OR UNDER MY DIRECT SUPERVISION,
AND THAT I AM A DULY LICENSED ENGINEER
UNDER THE LAWS OF THE STATE OF
MINNESOTA.

GINA M. DULLINGER
DATE: 10/16/2012
REG. NO. 45489

Drawing Title

DETAILS

Approved Project Director

Project Title
CREATE CAMPUS WALKING
PATH

Location
VA MEDICAL CENTER, ST. CLOUD, MN 56303

Date
10/16/2012

Checked
DJF

Drawn
GMD

Project Number
02212002

Building Number

Dwg. 15 of 24

Drawing Number
C4.0





1. ALL ORGANIC OR OTHER UNSUITABLE MATERIAL SHALL BE REMOVED FROM BENEATH THE WALKING PATH (BITUMINOUS TRAIL AND/OR CONCRETE WALK).
2. NOTIFY ENGINEER PRIOR TO PLACING AGGREGATE BASE IF ORGANIC MATERIAL IS ENCOUNTERED IN SUBGRADE.



100% CD'S - FOR CONSTRUCTION

Scale: As Shown

1	-
2	-
3	-
4	-
5	-
6	-
7	-
8	-
9	-
10	-
11	-
12	-
13	-
14	-
15	-
16	-
17	-
18	-
19	-
20	-
21	-
22	-
23	-
24	-
25	-
26	-
27	-
28	-
29	-
30	-
31	-
32	-
33	-
34	-
35	-
36	-
37	-
38	-
39	-
40	-
41	-
42	-
43	-
44	-
45	-
46	-
47	-
48	-
49	-
50	-
51	-
52	-
53	-
54	-
55	-
56	-
57	-
58	-
59	-
60	-
61	-
62	-
63	-
64	-
65	-
66	-
67	-
68	-
69	-
70	-
71	-
72	-
73	-
74	-
75	-
76	-
77	-
78	-
79	-
80	-
81	-
82	-
83	-
84	-
85	-
86	-
87	-
88	-
89	-
90	-
91	-
92	-
93	-
94	-
95	-
96	-
97	-
98	-
99	-
100	-
101	-
102	-
103	-
104	-
105	-
106	-
107	-
108	-
109	-
110	-
111	-
112	-
113	-
114	-
115	-
116	-
117	-
118	-
119	-
120	-
121	-
122	-
123	-
124	-
125	-
126	-
127	-
128	-
129	-
130	-
131	-
132	-
133	-
134	-
135	-
136	-
137	-
138	-
139	-
140	-
141	-
142	-
143	-
144	-
145	-
146	-
147	-
148	-
149	-
150	-
151	-
152	-
153	-
154	-
155	-
156	-
157	-
158	-
159	-
160	-
161	-
162	-
163	-
164	-
165	-
166	-
167	-
168	-
169	-
170	-
171	-
172	-
173	-
174	-
175	-
176	-
177	-
178	-
179	-
180	-
181	-
182	-
183	-
184	-
185	-
186	-
187	-
188	-
189	-
190	-
191	-



Alexandria Office
120 17th Avenue W.
Alexandria, MN 56308
(320) 762-1290

St. Cloud Office
3339 West St. Germain, Suite 250
St. Cloud, MN 56301
(320) 217-5557



Alexandria
525 Broadway Street
Alexandria, MN 56308
phone 320.759.9030
facsimile 320.759.9062

www.jlgarchitects.com
copyright © 2012

I HEREBY CERTIFY THAT THIS PLAN,
SPECIFICATION, OR REPORT WAS PREPARED
BY ME OR UNDER MY DIRECT SUPERVISION,
AND THAT I AM A DULY LICENSED ENGINEER
UNDER THE LAWS OF THE STATE OF
MINNESOTA.

GINA M. DULLINGER 45489
DATE: 10/16/2012 REG. NO.

Approved: Project Director

Location	VA MEDICAL CENTER, ST. CLOUD, MN 56303
----------	--

<p>  Minnesota Department of Transportation Division of Engineering Office of Bridge Engineering St. Paul, MN 56303 </p>	<p> Drawing Number BRG-100-100-100 </p>
---	---

Drawn
GMD

