

A

B

C

D

E

F

F

A

B

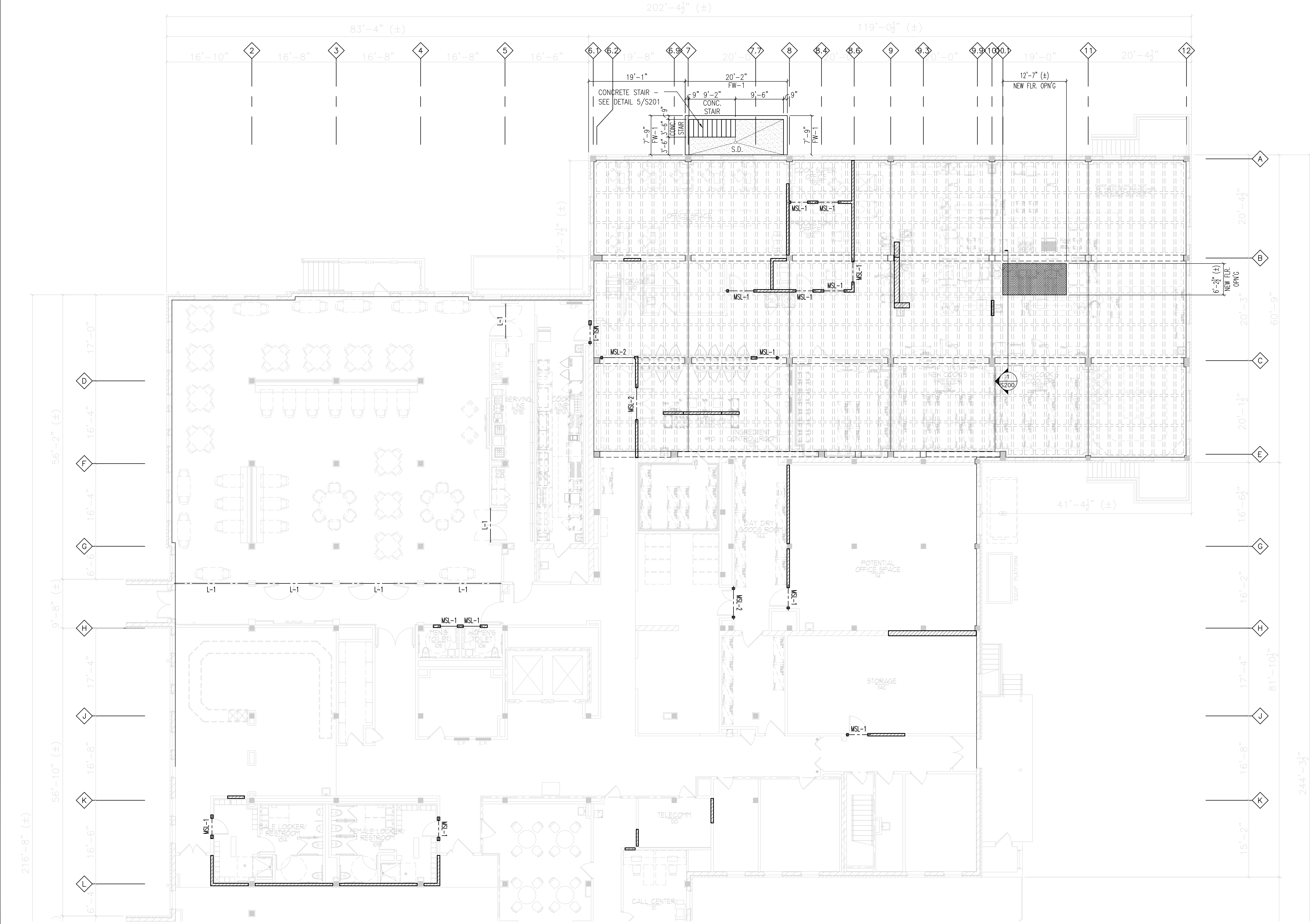
C

D

E

F

three inches = one foot
one and one half inches = one foot
one inch = one foot
three quarters inch = one foot
one half inch = one foot
three eighths inch = one foot
one quarter inch = one foot
one eighth inch = one foot
one sixteenth inch = one foot



FIRST FLOOR FRAMING PLAN
SCALE: 3/8" = 1'-0"

GENERAL STRUCTURAL NOTES:

- CONTRACTOR TO FIELD VERIFY ALL EXISTING CONDITIONS, INCLUDING ALL EXISTING FLOOR-TO-FLOOR HEIGHTS, EXISTING FLOOR CONSTRUCTION, ETC...
- IF ANY EXISTING CONDITIONS ARE FOUND TO BE DIFFERENT THAT WHAT IS CURRENTLY SHOWN & NOTED, CONTRACTOR TO NOTIFY STRUCTURAL ENGINEER PRIOR TO THE BEGINNING OF ANY WORK.
- SEE SPECIFICATIONS FOR MATERIALS & REQUIREMENTS.
- PRIOR TO THE COMMENCEMENT OF ANY FLOOR DEMOLITION WORK, CONTRACTOR TO VERIFY EXISTING FLOOR CONSTRUCTION INCLUDING ALL RIB LOCATIONS & SPACING.
- PRIOR TO THE COMMENCEMENT OF ANY FLOOR DEMOLITION WORK, CONTRACTOR TO VERIFY ALL FLOOR & WALL OPENING LOCATIONS, DIMENSIONS, & REQUIREMENTS WITH ARCHITECTURAL, MECHANICAL & FOOD SERVICE DRAWINGS.
- LOCATION OF PIPE PENETRATIONS & SLEEVES ARE NOT SHOWN ON THE STRUCTURAL DRAWINGS. SEE HVAC, PLUMBING, & ELECTRICAL DRAWINGS FOR SIZE, NUMBER, & LOCATION OF ALL NEW PIPE PENETRATIONS.
- NEW OPENINGS IN EXISTING FLOOR CONSTRUCTION ARE SHOWN WITH SOLID LINES. VERIFY SIZE, NUMBER, & LOCATION WITH THE MECHANICAL DRAWINGS. SEE SHEET S200 FOR NEW FLOOR OPENING DETAILS.
- IN NO CASE SHALL ANY STRUCTURAL ALTERATIONS OR WORK AFFECTING A STRUCTURAL MEMBER NOT SHOWN OR NOTED ON THESE DRAWINGS BE MADE, UNLESS APPROVED BY THE STRUCTURAL ENGINEER.
- ALL EXISTING CONSTRUCTION AFFECTED BY THE REMOVAL OF THE EXISTING CONSTRUCTION OR SUPPORTIVE MEMBERS, SHALL BE ADEQUATELY SHORED UNTIL NEW SUPPORTIVE MEMBERS ARE IN PLACE. DESIGN OF SHORING IS THE RESPONSIBILITY OF THE GENERAL CONTRACTOR.
- ANY DEVIATION FROM FLOOR OPENING LOCATIONS SHALL BE APPROVED BY RESIDENT ENGINEER PRIOR TO STARTING WORK.
- SEE SHEET S202 FOR LINTEL SCHEDULES, C.M.U. BOND BEAM SCHEDULES, & MISCELLANEOUS STRUCTURAL DETAILS.

GENERAL FOUNDATION NOTES:

- SEE SHEET S201 FOR TYPICAL CONCRETE SLAB ON GRADE FLOOR SLAB CONSTRUCTION.
- (FW-X) INDICATES FOUNDATION WALL TYPES. SEE SHEET S201 FOR FOUNDATION WALL & FOOTING SCHEDULE & ASSOCIATED DETAILS.

GENERAL C.M.U. WALL NOTES:

- PROVIDE #5@ VERTICAL BARS AND GROUT FILLED CORES FULL HEIGHT AT 32" O.C. FOR ALL NEW C.M.U. WALLS UNLESS NOTED OTHERWISE.
- PROVIDE #5@ VERTICAL BARS AND GROUT FILLED CORES FULL HEIGHT AT ALL NEW C.M.U. WALL CORNERS OR ENDS.
- SEE LINTEL SCHEDULE & DETAILS ON SHEET S202 FOR ADDITIONAL C.M.U. WALL REINFORCING & GROUTING REQUIREMENTS FOR ALL NEW DOOR & WALL OPENINGS.
- ALL NEW C.M.U. WALLS, UNLESS NOTED OTHERWISE, TO BE PROVIDED w/ CONT. (1) COURSE BOND BEAMS (BB-1) @ TOP OF ALL NEW C.M.U. WALLS, AND @ EVERY 8'-0" OF VERTICAL WALL HEIGHT. SEE SHEET S202 FOR C.M.U. BOND BEAM SCHEDULE.
- ALL NEW C.M.U. WALLS TO MEET NCMA DESIGN REQUIREMENTS.

FLOOR FRAMING LEGEND:

- AREA OF NEW FLOOR OPENING
- AREA OF NEW CONC. SLAB-ON-GRADE - SEE SHEET S201 FOR TYPICAL CONC. FLOOR SLAB CONSTRUCTION
- NEW MASONRY WALL CONSTRUCTION - SEE ARCH. DRAWINGS FOR WALL TYPES
- NEW CONCRETE FOUNDATION WALL - SEE SHEET S201 FOR FOUNDATION WALL TYPES
- MSL-X NEW MASONRY LINTEL - SEE SHEET S202 FOR MASONRY LINTEL SCHEDULE
- L-X NEW STEEL LINTEL - SEE SHEET S202 FOR STEEL LINTEL SCHEDULE

FINAL BID DOCUMENTS

FINAL BID DOCUMENTS	12-14-12
95% CONSTRUCTION DOCUMENT SUBMISSION	11-26-12
50% REVISED DOCUMENTS FOR REVIEW	11-19-12
90% CONSTRUCTION DOCUMENTS SUBMISSION	05-17-12
50% CONSTRUCTION DOCUMENTS SUBMISSION	04-06-12
35% DOCUMENTS SUBMISSION	02-22-12
SCHEMATIC DESIGN SUBMISSION	11-21-11
Revisions:	Date

Federal Health Care Center
U.S. Department of Veterans Affairs | U.S. Department of Defense

Captain James A. Lovell
Federal Health Care Center
3001 Green Bay Road
North Chicago, IL, 60064



CONSULTANTS:

ARNOLD & O'SHERIDAN
Consulting Engineers

CHEQUAMEGON BAY ENGINEERING, INC.

MACKESEY AND ASSOCIATES, LLC

PROJECT LEADER:

Plunkett Raysich Architects

11000 West Park Place • Milwaukee WI 53224 • Tel 414 359-3060 • Fax 414 359-3070

Intelligent Designs **Inspired Results**

www.praarch.com

PRA Job No. 110172-01

Drawing Title
First Floor Framing Plan

Approved: Project Director

Project Title
AE SCIP for Building 6 FHCC

Location
North Chicago, IL

Date
December 14, 2012

Checked By:
MAC

Drawn By:
KJS

Project Number
556-11-119

Building Number
6

Drawing Number
S101

Office of Facilities Management

Department of Veterans Affairs