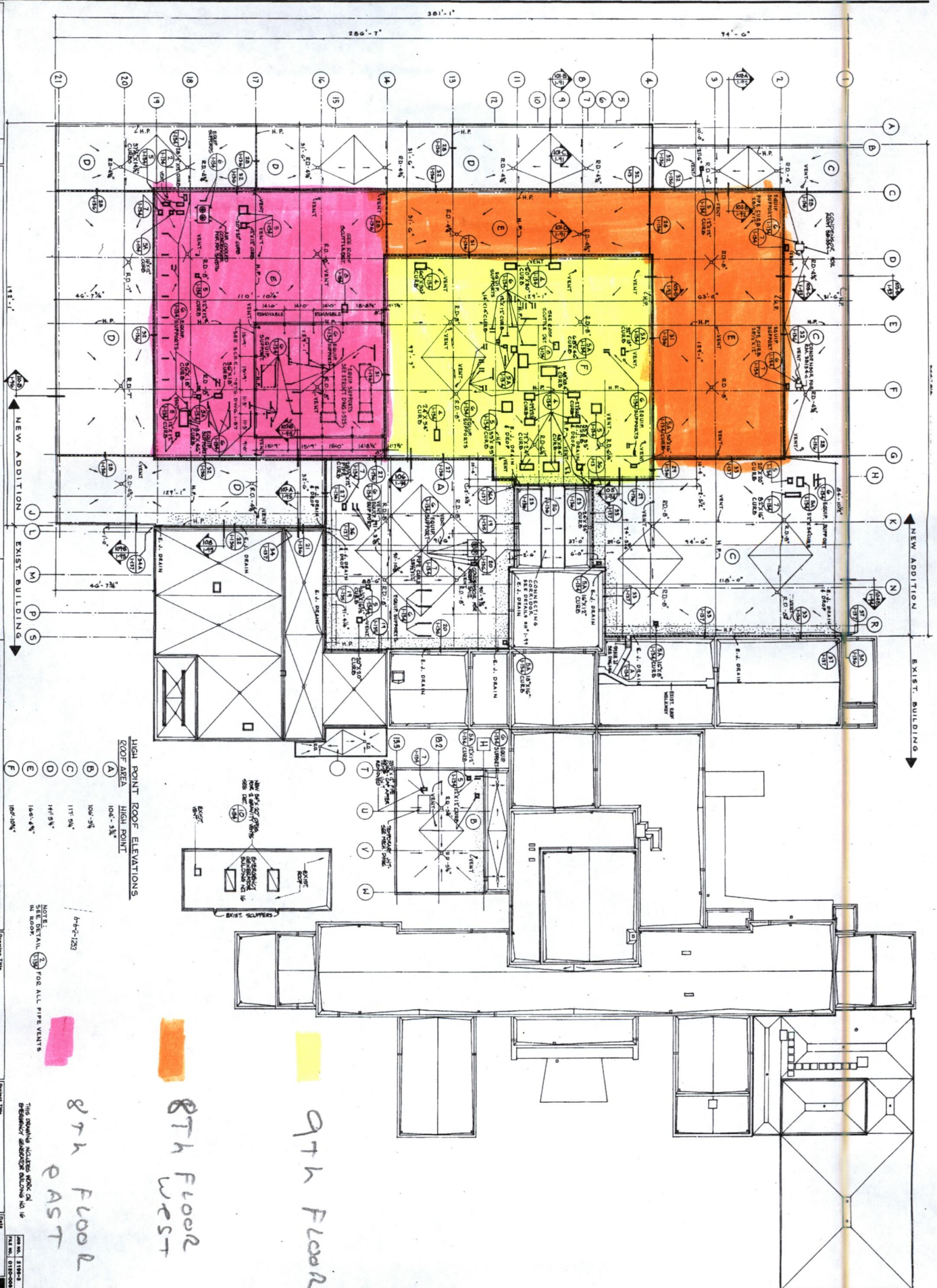


one eighth inch = one foot    one quarter inch = one foot    three eighths inch = one foot    one half inch = one foot    three quarters inch = one foot    one inch = one foot    one and one half inches = one foot    two inches = one foot



8TH FLOOR

8TH FLOOR

9TH FLOOR

8TH FLOOR



HAYES, LARGE, SHUCKING, FRITH & WEDGE  
H. F. LINT COMPANY - MECHANICAL & ELECTRICAL ENGINEERING CONSULTANTS  
JAMES WYLAND & ASSOCIATES, INC. - FOOD SERVICE CONSULTANTS  
LEITCH, BATES & ASSOCIATES, INC. - TRANSPORTATION SYSTEM CONSULTANTS  
JOSEPH W. COOKE & ASSOCIATES - STRUCTURAL CONSULTANTS

Architects  
ROOF PLAN - UNITS "A", "B", "C", AND "D"  
DATE: 10/1/00

Project Title  
CLIN. ADD./RENOVATION 240 BED NURS.  
PHASE B - CLIN. ADD./RENOVATION/  
FURNISHING & STRUCTURE  
642-034-C

Sheet No. 1-42  
Veterans Administration