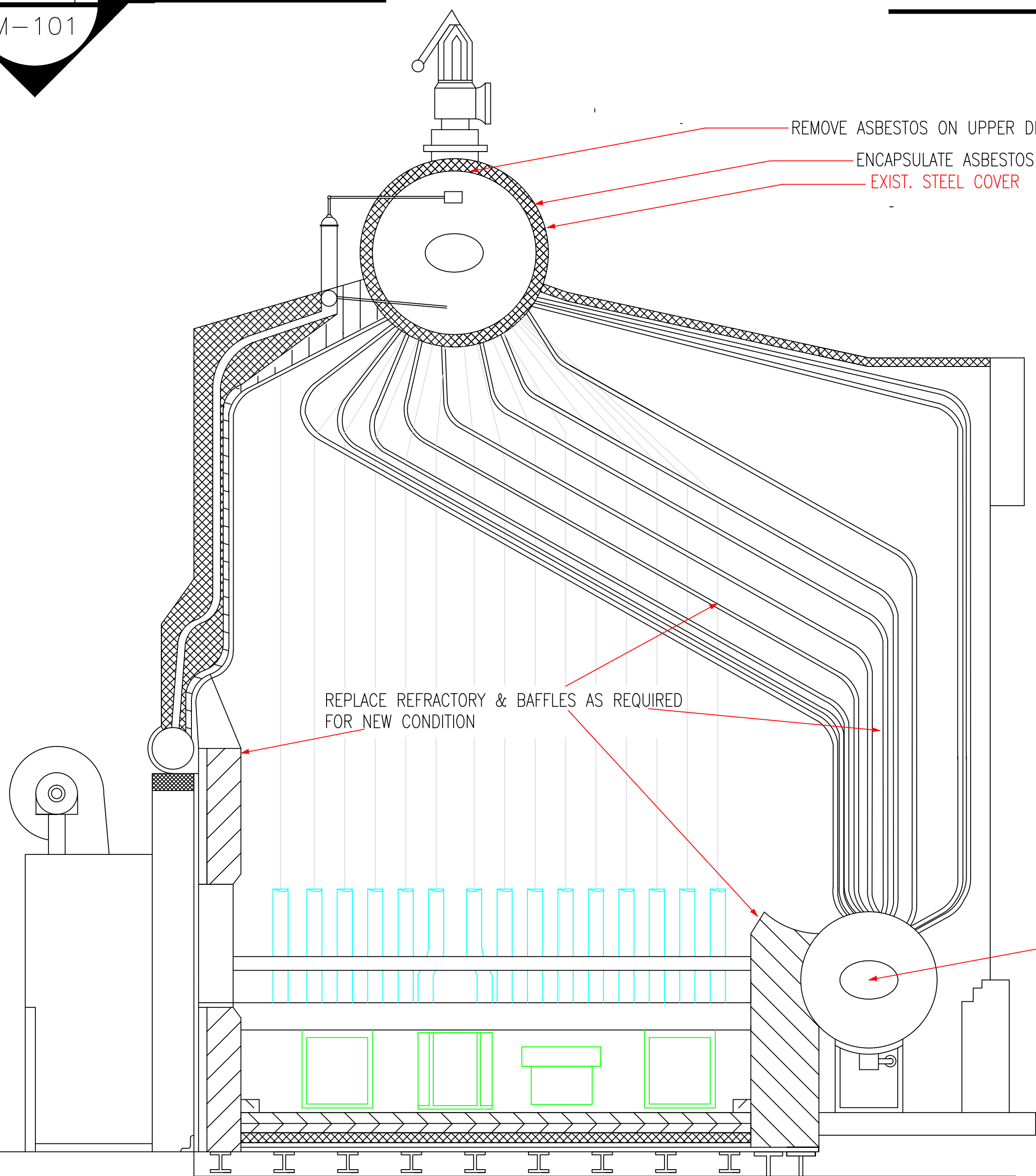
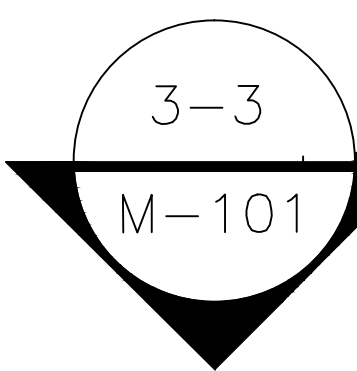


NOTE:
ALL ITEMS NOTED TO BE REPLACE SHALL
BE WILL NEW INDUSTRIAL PARTS AS PER
REQUIREMENTS OF SPECIFICATIONS.



BOILER CASING
REMOVE CASING PANELS. CONTRACTOR TO SANDBLAST PANELS.
CASING TO BE REINSTALLED WITH NEW GASKETS FOR PANEL INSULATION.
BOLTS ARE TO BE REPLACED AS REQUIRED OR INSTRUCTED BY THE
COR.

FURNACE AND CONVECTION WALLS:
REMOVE REFRACTORY AND INSULATION.
INSTALL NEW TILE AND BACK-UP INSULATION AS PER REQUIREMENTS.
TILE TO BE SUBMITTED TO THE GOVT. FOR APPROVAL.

BAFFLE WALL:
LOWER FRONT WALL: REMOVE EXISTING TILE AND INSTALL NEW REFRACTORY TILE
BURNER: REMOVE AND INSTALL FIRE BRICK
TARGET WALL: TEAR OUT AND FURNISH FACTORY APPLIED BURNER TILE AND BULL
RIGHT AND LEFT SIDEWALLS: TEAR OUT AND INSTALL FIREBRICK WITH CASTABLE CAP

FURNACE FLOOR:
TEAR OUT FIRE BRICK AND INSULATION
INSTALL NEW INSULATION AND TWO (2) LAYERS OF FIREBRICK

BOILER DRUMS:
INSTALL NEW INSULATION AND CANVAS TO FOUR DRUMS HEADS TO MATCH EXISTING INSULATION.
INSTALL NEW LAGGING AND INSULATION TO STEAM DRUM

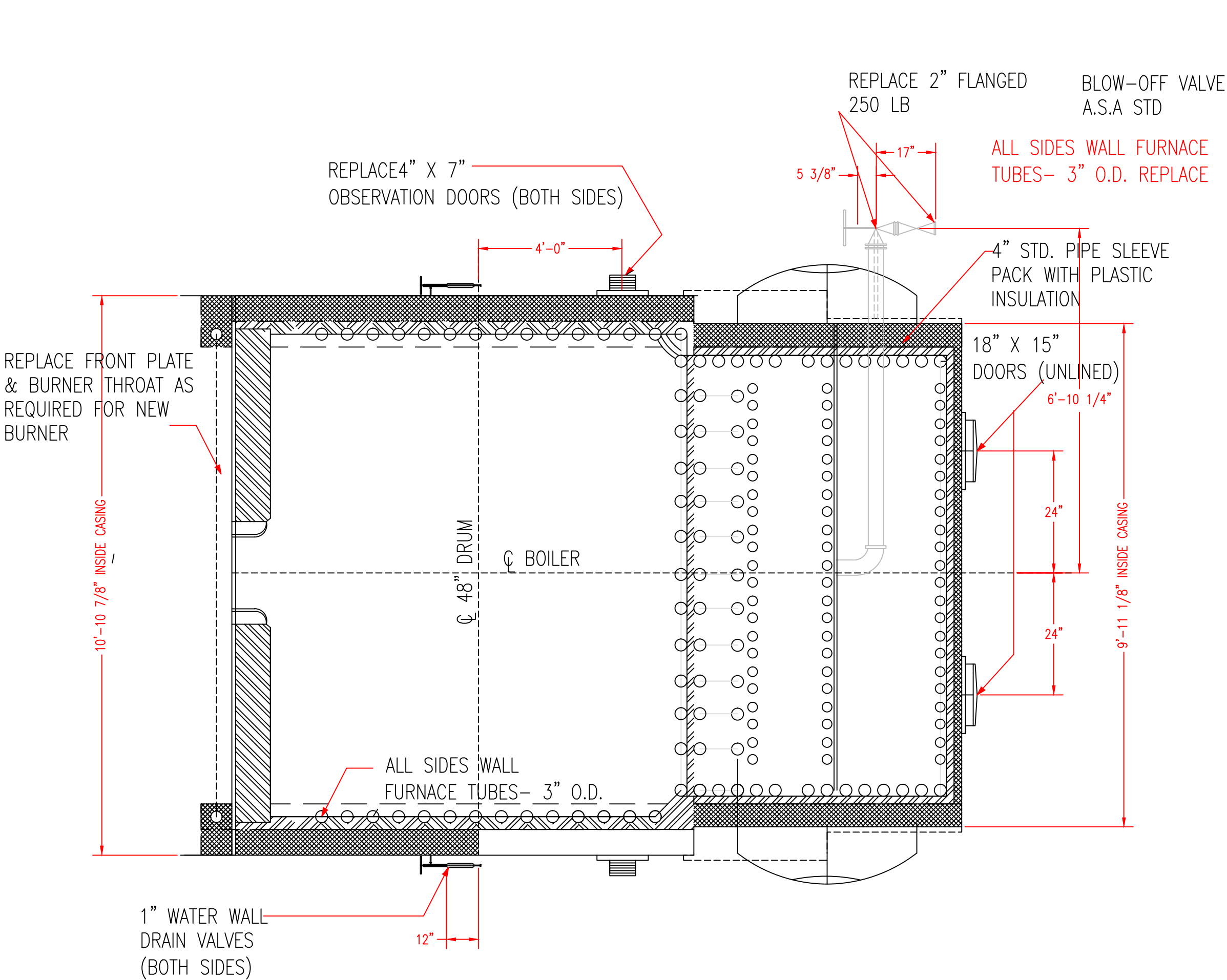
MUD DRUM:
RE-FACE TWO MAN-WAY RINGS



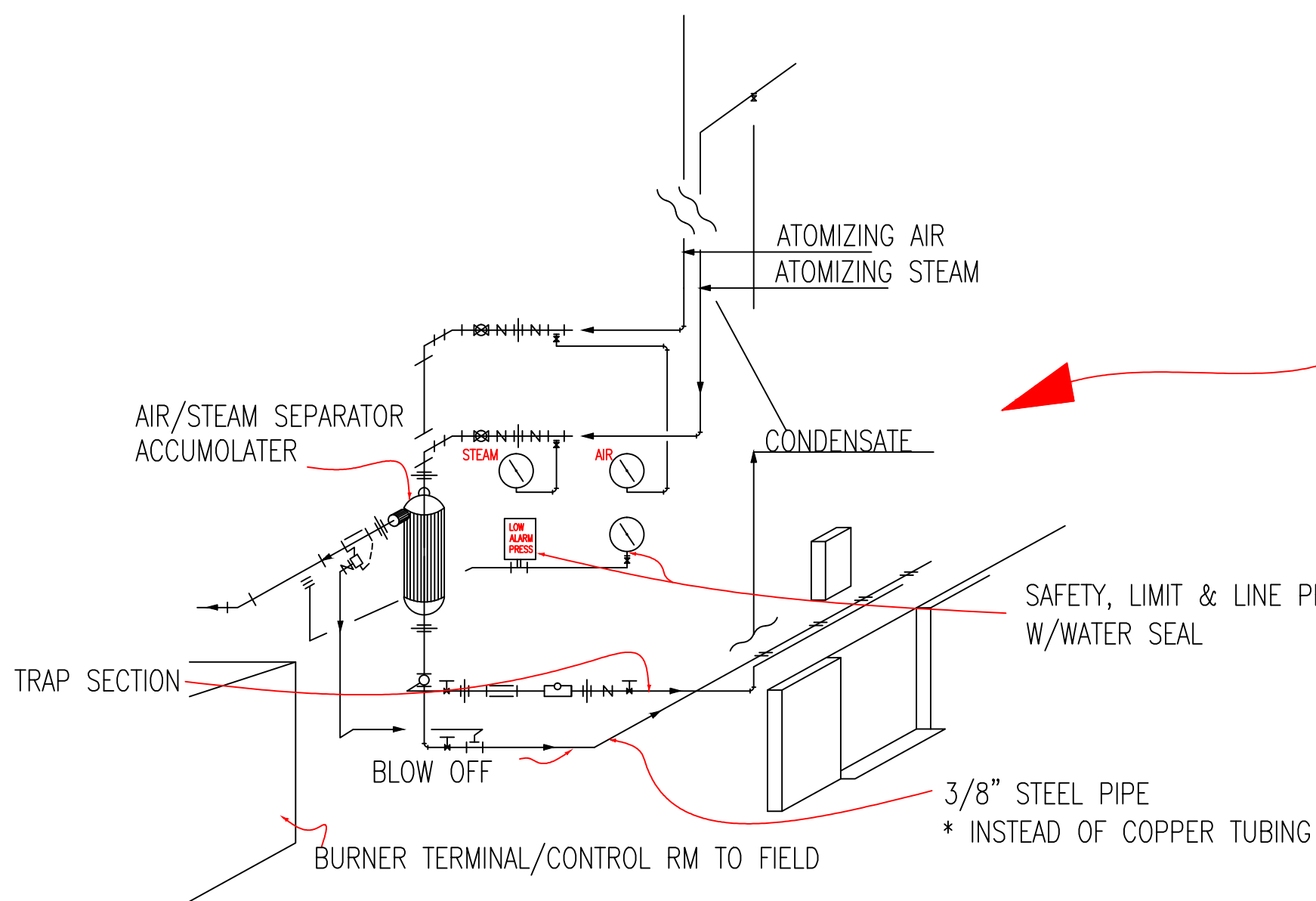
WEST ELEVATION VIEW



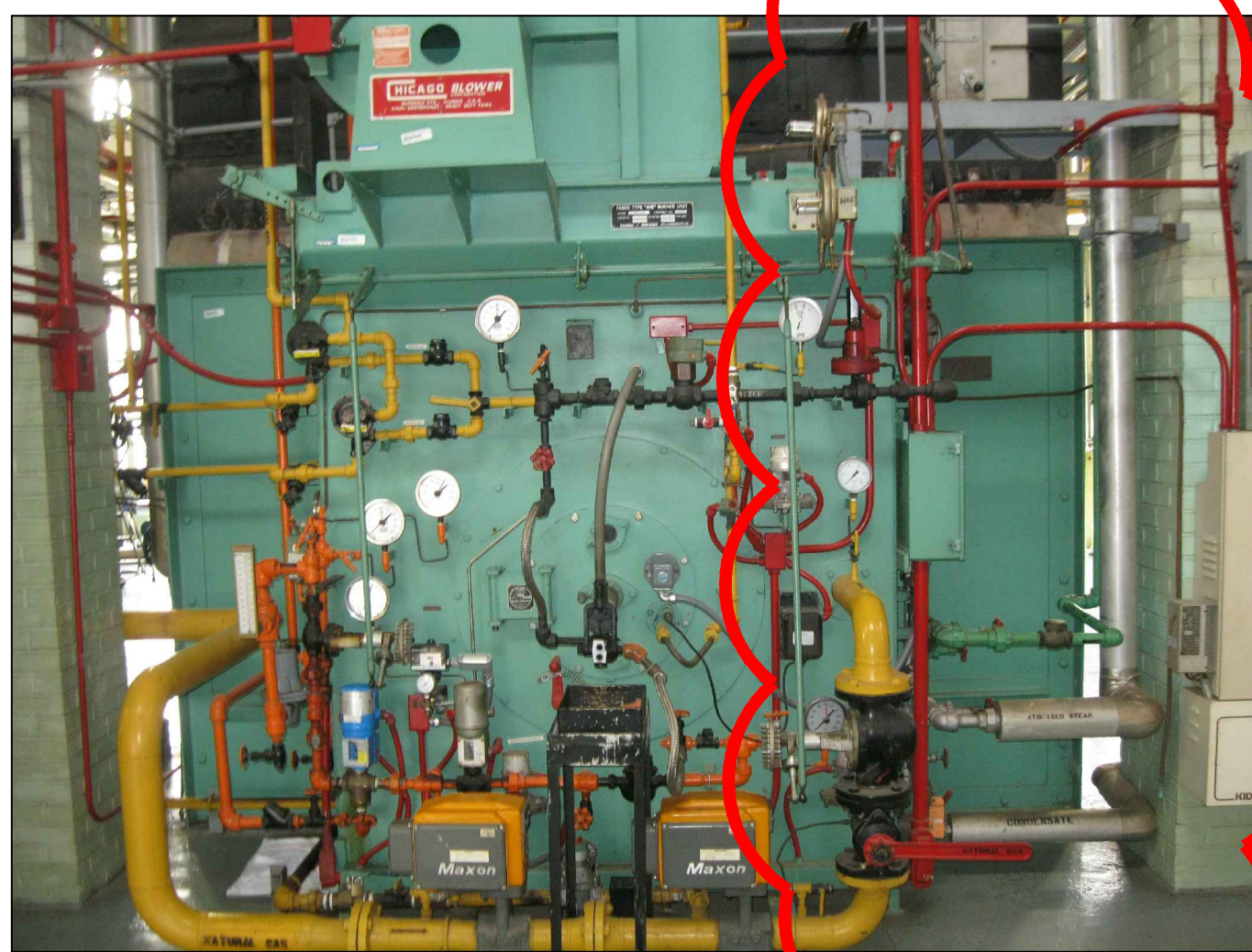
SOUTH ELEVATION VIEW



PLAN SECTION A-A



NOTE:
CUT PRESENT CONDENSATE LINE; RE-PIPE BACK INTO VERTICAL
BLOW OFF STEAM/ AIR PIPED PARALLEL TO BOILER CASING BACK
INTO DRAIN BOX (HING TYPE/RELIEFS & STEAM DRUM VENTS)
TYPICAL LAYOUT SIZES 1" BURNER AIR & SUPPLY/ATOMIZING AIR
& STEAM MIN. 1" EXTRA HEAVY/W - TORQUE STEEL FITTINGS WITH
DOUBLE CHECKS BOTH STEAM & AIR (* UPSTREAM OF DA CHECKS
FOR AIR 150# FITTINGS/PIPE ETC.



NORTH ELEVATION VIEW

ATOMIZING STEAM/AIR SEPARATOR SYSTEM & CONDENSATE RETURN			
DESCRIPTION	SIZE	TYPE OF MATERIAL	QTY
1. PIPE BLK A-105	1"	SCH 80	2 LENGTHS
2. 90° ELLS THREAD	1"	FORGE STEEL 2000#	12
3. 45° ELLS THREAD	1"	FORGE STEEL 2000#	4
4. TEE'S	1"	FORGE STEEL 2000#	8
5. UNIONS	1"	FORGE STEEL 2000#	10
6. CK VALVES (BRONZ TYPE)	1"	BRONZE 250#	4
7. ISO. CONTR VALVE	1"	FORGE STEEL VOOIT	4
8. COUPLINGS	1"	FORGE STEEL	3
9. WELD CAPS (150#)	2 1/2"	BLK WELD CAPS.	2
10. STRAINER Y-TYPE	1"	250#	1
11. BLK BUSHINGS SIZES	(4) 1" X 1/4" F.S. (2) 1" X 1/2" F.S. (1) 1" X 3/8" F.S.		4 2 1
12. ISO. GATE VALVE	1/2"	FORGE STEEL VOOIT	3
13. 90° ELLS THREADED	1/2"	FORGE STEEL 2000#	8
14. 45° ELLS THREADED	1/2"	FORGE STEEL 2000#	4
15. TEE'S	1/2"	FORGE STEEL 2000#	3
16. CK VALVES (BRONZ TYPE)	1/2"	150#	2
17. STAINER	1/2"	150#	1
18. UNIONS	1/2"	FORGE STEEL 3000#	4
19. TRAP EITHER BUCKET OR THERMOSTATIC CONTROL	1/2"		1
20. PRESSURE GANGES OTO 200TH LM 1/4" BC 4" TO 4 1/2" FACE	1"		3

NOTE:
CONTRACTOR TO SUBMIT SHOP DRAWINGS FOR GOVT. REVIEW. THIS IS ONLY A GENERAL
GUIDELINE OF PARTS SCHEDULE TO BE INCORPORATED INTO THE CONTRACTOR'S SHOP
DRAWINGS ALONG WITH OTHER PARTS TO BE INSTALLED IN EACH INDIVIDUAL SUBMITTAL.

REVISION 1: ADDITIONAL DETAILS	03 JAN 12
Revision	Date

RECOMMEND APPROVAL			
REQUESTER	Date		
CHIEF OF SERVICE	Date	CHIEF OF STAFF	Date
ASSOC. DIR. PATIENT CARE SVC.	Date	ASSOC. DIR. for OPERATIONS	Date
APPROVAL BY:	Date		
MEDICAL CENTER DIRECTOR			

Drawing Title	SECTION VIEWS
Approved: Safety Manager/M&O Supervisor	
Approved: Chief of Facilities Management Svr.	

Project Title	REPLACE REFRACTORY ON BOILER #2
Building Number	BUILDING #18
Location	W.G.(Bill) Hefner Medical Center 1601 Brenner Ave. Salisbury NC 28144

Date	28 NOV 2012
Project No.	659-11-231
DRAWING NO.	M-101
DWG.	3 OF 4



Department of
Veterans Affairs