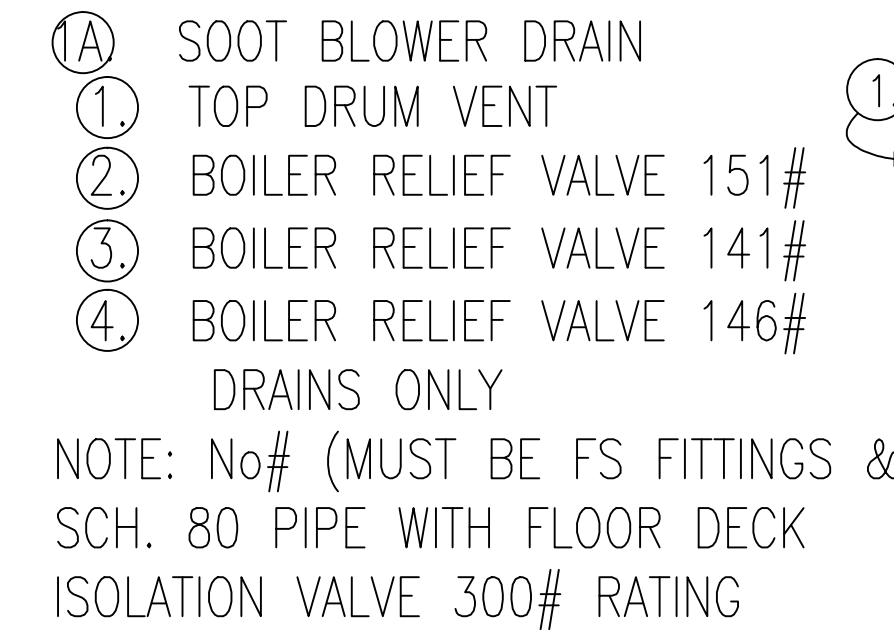




\*

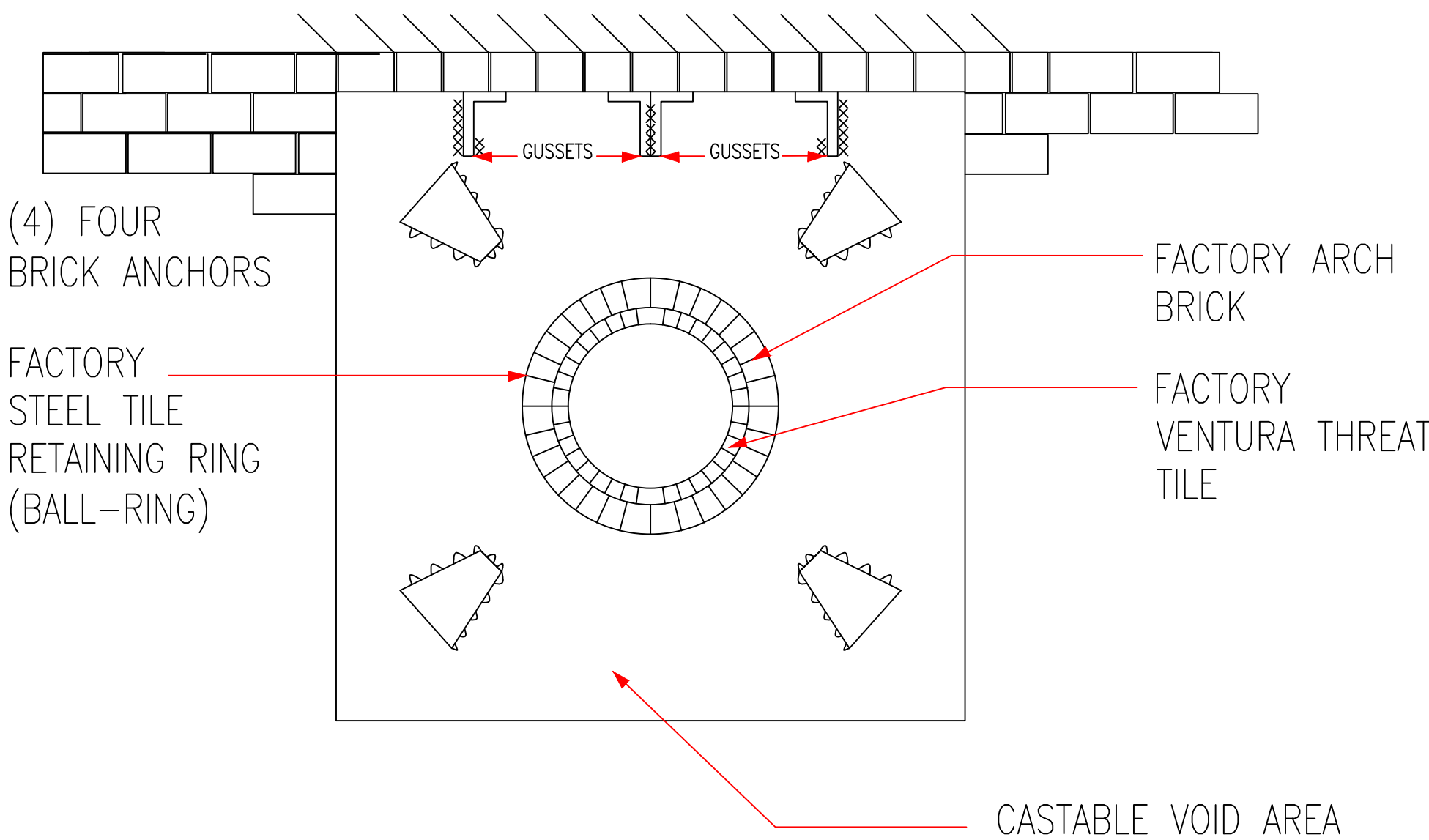


LOW PRESSURE

BLOWDOWN SAFETY BOX (HIGH PRESSURE BOLTED LID)			
DESCRIPTION	SIZE	TYPE OF MATERIAL	QTY
1. 1/4" STEEL PLATE	1/4"	CARBON STEEL	(1) 4 X 8 SHEETS
2. COUPLINGS	3/2"	FORGE STEEL	8
3. PIPE A-105	2"	SCH 80	1 LENGTH
4. 2" 90° ELL ELLS	2"	FORGE STEEL 2000#	3
5. UNIONS	2"	FORGE STEEL 3000#	1
6. CK VALVES	2"	SWING BRONZE 150#	1
7. COUPLING	2"	FORGE STEEL	2
8. 1 1/4" x 1/4" ANG IRON	1 1/4"	CARBON STEEL	1 LENGTH
9. ISO GATE VALVE	3/4"	FORGE STEEL VQOT	3
10. FLOW METERS	3/4"	FOR 250# SERVICES	3
11. UNIONS	3/4"	FORGE STEEL 3000#	8
12. UNIONS	1/2"	FORGE STEEL 3000#	4
13. UNIONS	3/8"	FORGE STEEL 3000#	2
14. 90° ELLS	3/4"	FORGE STEEL 2000#	14
15. 90° ELLS	1/2"	FORGE STEEL 2000#	6
16. 90° ELLS	3/8"	FORGE STEEL 2000#	6
17. CROSSES	3/4"	FORGE STEEL 2000#	14
18. CROSSES	1/2"	FORGE STEEL 2000#	8
19. CROSSES	3/8"	FORGE STEEL 2000#	8
20. PIPE A-105	3/8"	SCH 80	1 LENGTH
21. PIPE A-105	1/2"	SCH 80	2 LENGTH
22. PIPE A-105	3/4"	SCH 80	5 LENGTH
23. TEE'S	1/2"	FORGE STEEL TEES 2000#	6
24. ASSORTED SCH 80 NIPPLES			
	3/4" X CLOSE	=	18
	3/4" X SHOULDER	=	16
	3/4" X 2 1/2"	=	14
	3/4" X 3"	=	12
	3/4" X 3 1/2"	=	12
	3/4" X 4"	=	12
	3/4" X 4 1/2"	=	10
	3/4" X 5"	=	10
	3/4" X 5 1/2"	=	10
	3/4" X 6"	=	10

BLOWDOWN SAFETY BOX (HIGH PRESSURE BOLTED LID)			
25. SCH 80			
$\frac{1}{2}$ "	X CLOSE	=	14
$\frac{1}{2}$ "	X SHOULDER	=	14
$\frac{1}{2}$ "	X 2"	=	12
$\frac{1}{2}$ "	X 2 $\frac{1}{2}$ "	=	12
$\frac{1}{2}$ "	X 3"	=	10
$\frac{1}{2}$ "	X 3 $\frac{1}{2}$ "	=	10
$\frac{1}{2}$ "	X 4"	=	8
$\frac{1}{2}$ "	X 4 $\frac{1}{2}$ "	=	8
$\frac{1}{2}$ "	X 5"	=	8
$\frac{1}{2}$ "	X 5 $\frac{1}{2}$ "	=	8
$\frac{1}{2}$ "	X 6"	=	8
26. SCH 80			
$\frac{3}{8}$ "	X CLOSE	=	10
$\frac{3}{8}$ "	X 1 $\frac{1}{2}$ "	=	10
$\frac{3}{8}$ "	X 2"	=	10
$\frac{3}{8}$ "	X 2 $\frac{1}{2}$ "	=	10
$\frac{3}{8}$ "	X 3"	=	8
$\frac{3}{8}$ "	X 3 $\frac{1}{2}$ "	=	8
$\frac{3}{8}$ "	X 4"	=	8
$\frac{3}{8}$ "	X 4 $\frac{1}{2}$ "	=	8
$\frac{3}{8}$ "	X 5"	=	8
$\frac{3}{8}$ "	X 5 $\frac{1}{2}$ "	=	6
$\frac{3}{8}$ "	X 6"	=	6
27. $\frac{1}{2}$ " TEFLON 20 ROLLS & 2 CANS #5 RECTORSEAL			

STEEL LINTEL (BRICK LINTEL)  
CHANNEL IRON HALF DISTANCE FROM FIET TO REAR ON BACK  
MIN (2) OR INSTALL (3RD) AS SHOWN ALL HAVE GUSSET SUPPORTS AS  
WELL.

Department of  
Veterans Affairs[illegible]

RECOMMEND				APPROVAL		Drawing Title		Project Title		Date	
REQUESTER		Date				SECTION VIEWS		REPLACE REFRACTORY ON		28 NOV 2012	
CHIEF OF SERVICE		Date		CHIEF OF STAFF				BOILER #2		Project No. 659-11-231	
ASSOC. DIR. PATIENT CARE SVC.		Date		ASSOC. DIR. for OPERATIONS		Date		Approved: Safety Manager/M&O Supervisor		Building Number BUILDING #18	
APPROVAL BY:						Date		Approved: Chief of Facilities Management Svr.		Checked	
MEDICAL CENTER DIRECTOR								Location		W.G.(Bill) Hefner Medical Center 1601 Brenner Ave. Salisbury NC 28144	
										Drawn BLF  DRAWING NO.  M-102  DWG. 4 OF 4	