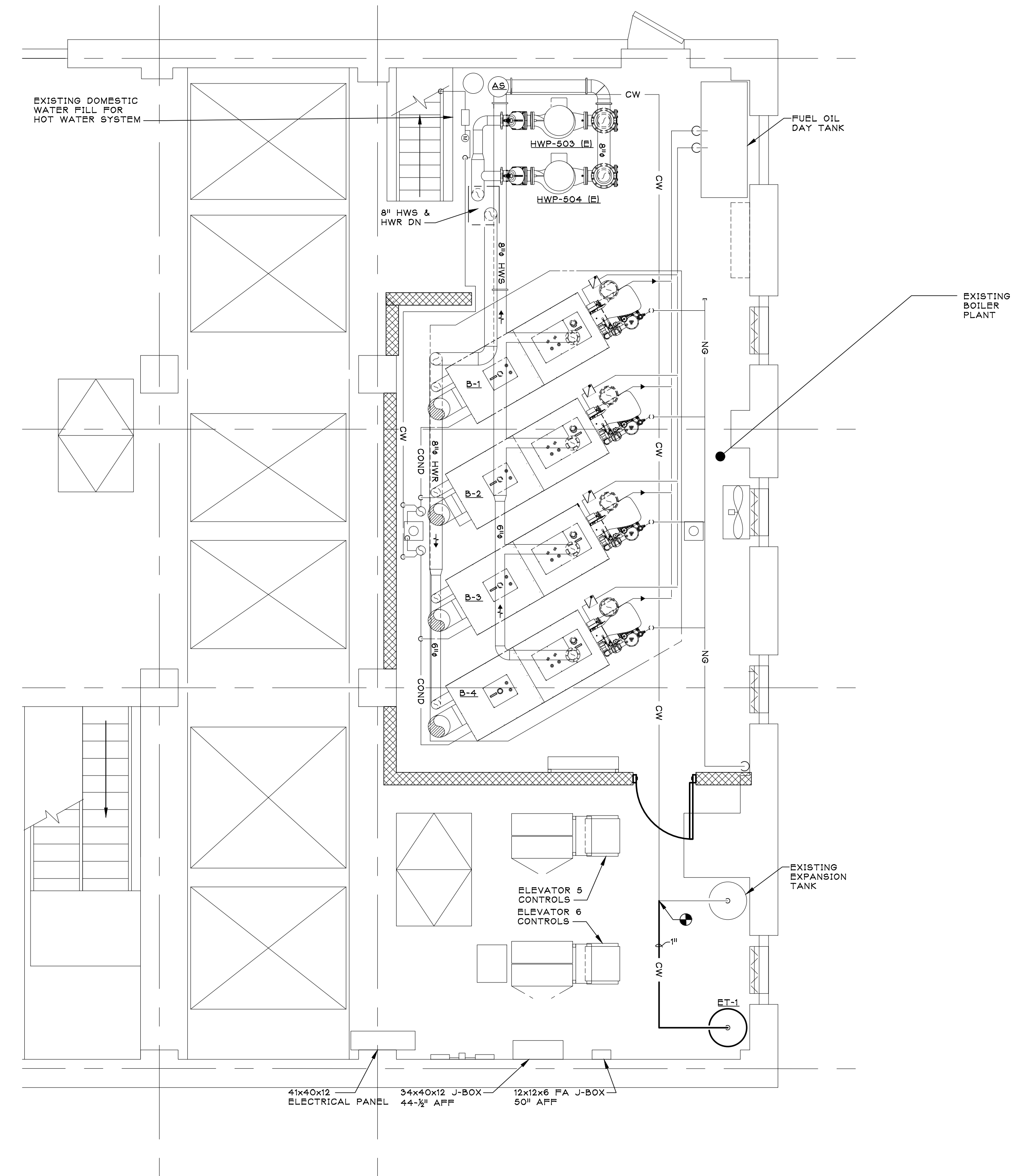
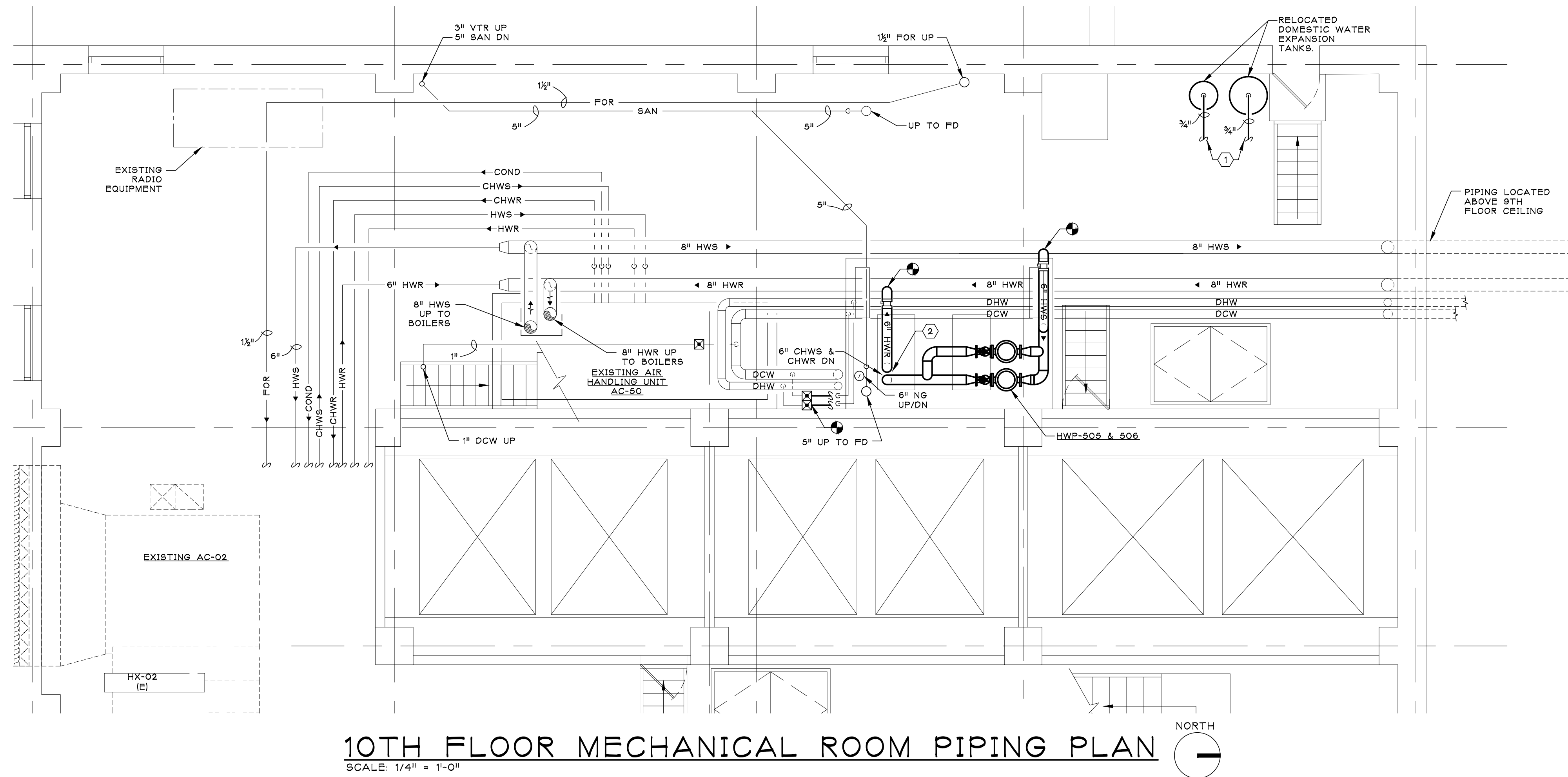
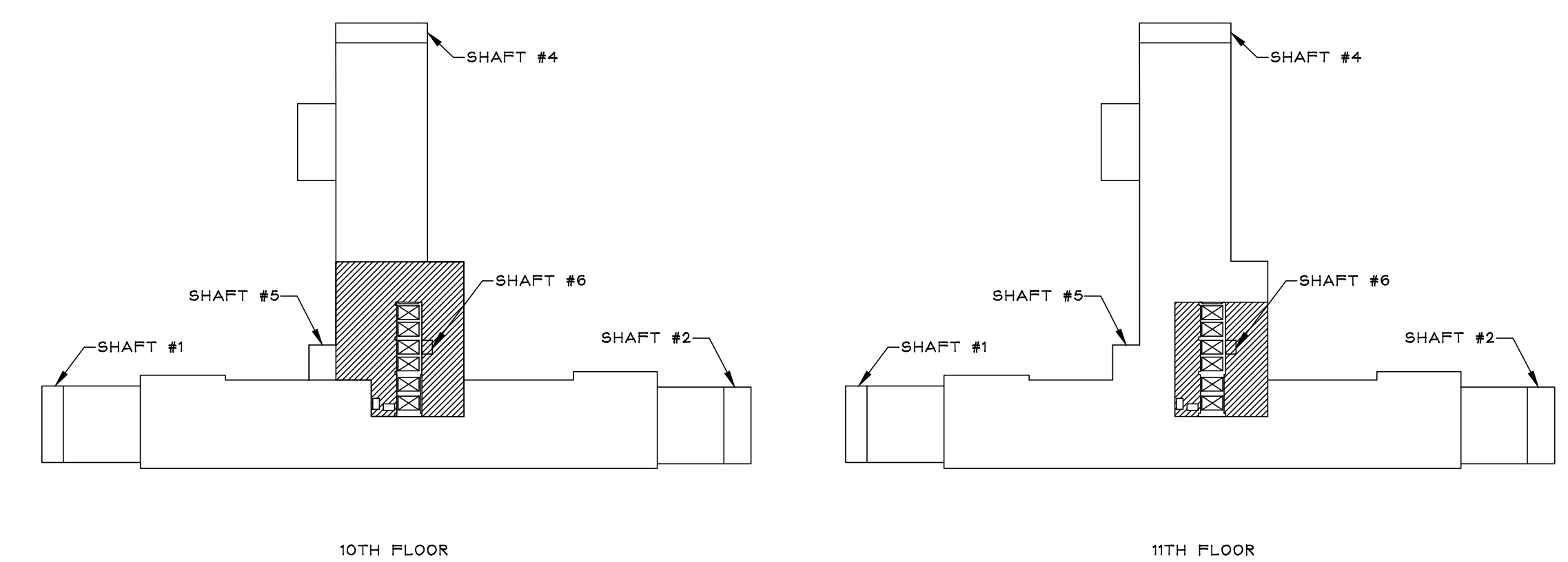


- KEYED NOTES:
- RELOCATE EXISTING DOMESTIC WATER EXPANSION TANKS. REMOVE ASSOCIATED WATER LINES BACK TO NEAREST ISOLATION VALVE AND EXTEND TO NEW LOCATION AS INDICATED.
 - HWS & HWR PIPING TO BE ROUTED THROUGH EXISTING SHAFT #5A VERTICALLY FROM 10TH FLOOR TO SUB-BASEMENT. PROVIDE LATERAL BRACING AND SUPPORTS AT 15'-0" INTERVALS. REFER TO SCHEMATIC ON MP-401



11TH FLOOR MECHANICAL ROOM PIPING PLAN
SCALE: 1/4" = 1'-0"



KEY PLAN

Revisions	Date



IPD: Engineering
INTEGRATED PROJECT DELIVERY

ONE WEBSTER'S LANDING
SYRACUSE, NEW YORK 13202
315.423.0185

IPD PROJECT # 11-7061-8

Drawing Title 10TH FLOOR MECHANICAL ROOM	Project Title ADD HEATING HOT WATER TO SHAFTS #3 & #4	Date 11-16-12
Building Number 1	Checked SBG	Project No. 528A7-11-711
Location SYRACUSE	Drawn NCB	DRAWING NO. MP-101
		Dwg. 2 of 8

