



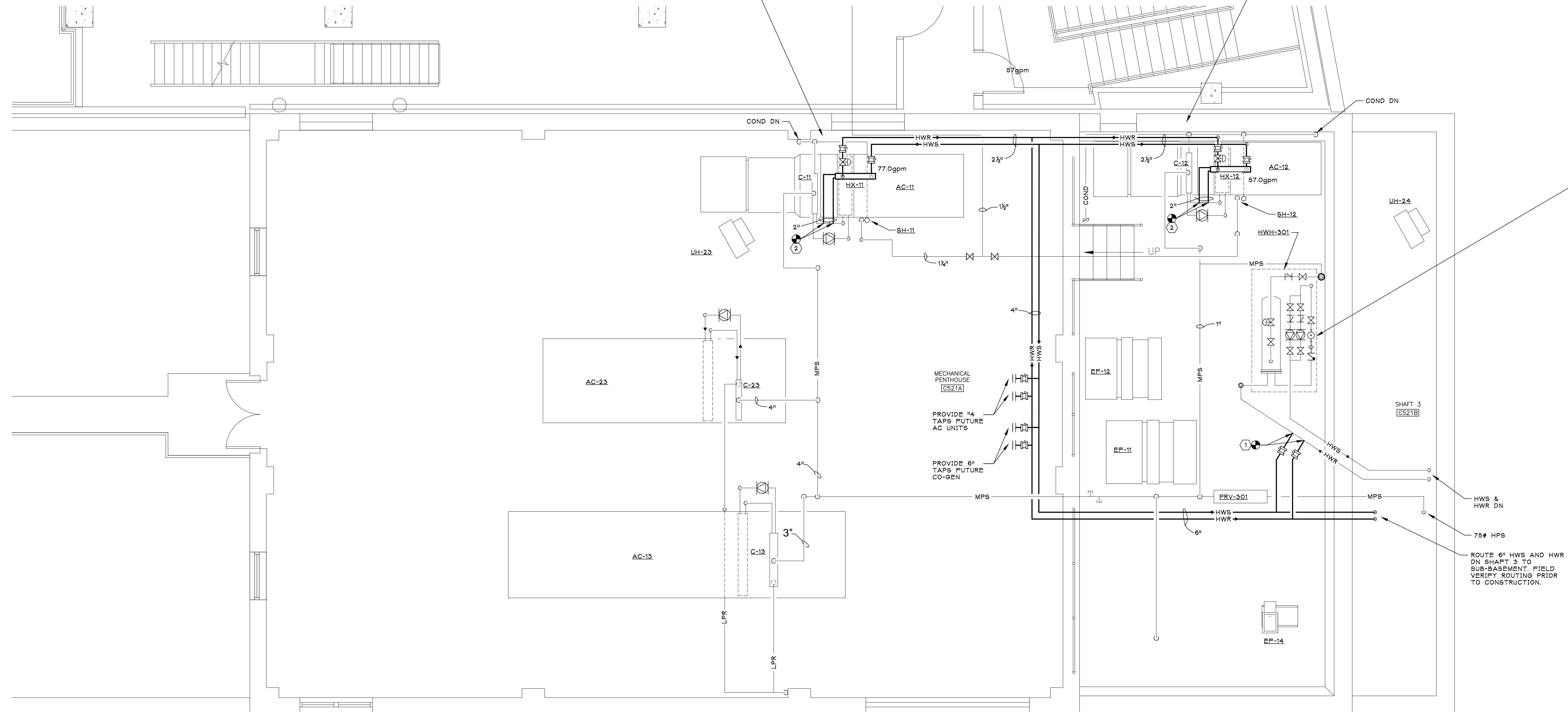
ABOVE AC-11



ABOVE AC-12



HWH-301



SHAFT 3 5TH FLOOR PLAN

SCALE: 1/4" = 1'-0"

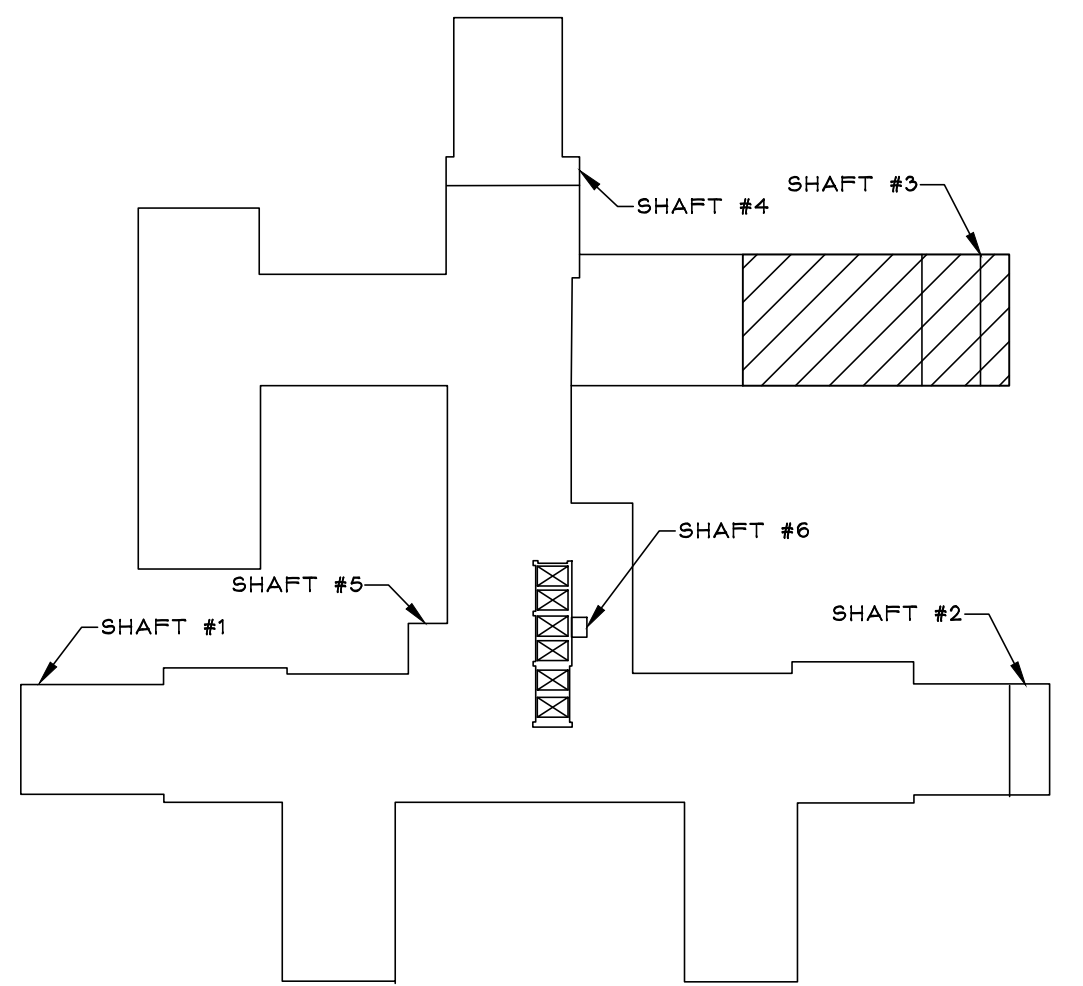


GENERAL DRAWING NOTES:

1. MAINTAIN CLEAR SERVICE ACCESS TO EXISTING EQUIPMENT WHEN LOCATING NEW PIPING AND HEAT EXCHANGERS.

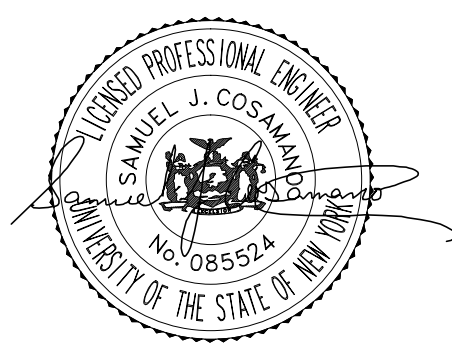
KEYED NOTES:

1. REFER TO MP-401 HOT WATER STATION PIPING AND CONTROL SCHEMATIC. PROVIDE ALL REQUIRED FITTINGS, VALVES, CONTROL DEVICES, INSULATION AND APPURTENANCES TO CONNECT HWS & HWR PIPING TO EXISTING HOT WATER STATION SUPPLY PIPING.
2. REFER TO MP-401 HOT WATER HEATING COIL CONTROL SCHEMATIC AND HEAT EXCHANGER DETAIL. PROVIDE ALL REQUIRED FITTINGS, VALVES, CONTROL DEVICES, INSULATION, HEAT EXCHANGER, GLYCOL AND APPURTENANCES TO CONNECT HWS & HWR TO EXISTING HOT GLYCOL HEATING COIL LOOP.



5TH FLOOR

KEY PLAN



IPD: Engineering
INTEGRATED PROJECT DELIVERY

ONE WEBSTER'S LANDING
SYRACUSE, NEW YORK 13202
315.423.0185

IPD PROJECT # 11-7061-8

Drawing Title
**SHAFT #3 - 5TH FLOOR BOILER
PIPING PLAN**

Project Title
**ADD HEATING HOT WATER TO
SHAFTS #3 & #4**

Date
11-16-12

Project No.
528A7-11-711

Building Number
1

Checked
SBG

Drawn
NCB

Location
SYRACUSE

DRAWING NO.
MP-104

Dwg. 5 of 8



Department of
Veterans Affairs