


1 SOUTH EXTERIOR ELEVATION

Contract Documents Submission (CD3 - 100%)

FULLY SPRINKLERED

<p>Office of Construction and Facilities Management</p>	<p>Department of Veterans Affairs</p> 
<p>Registration no. 652-10-608</p>	<p>S-202</p>
<p>Bill of Sale Number</p>	<p>17</p>
<p>Contract no. 17</p>	<p>Contract no. 17</p>

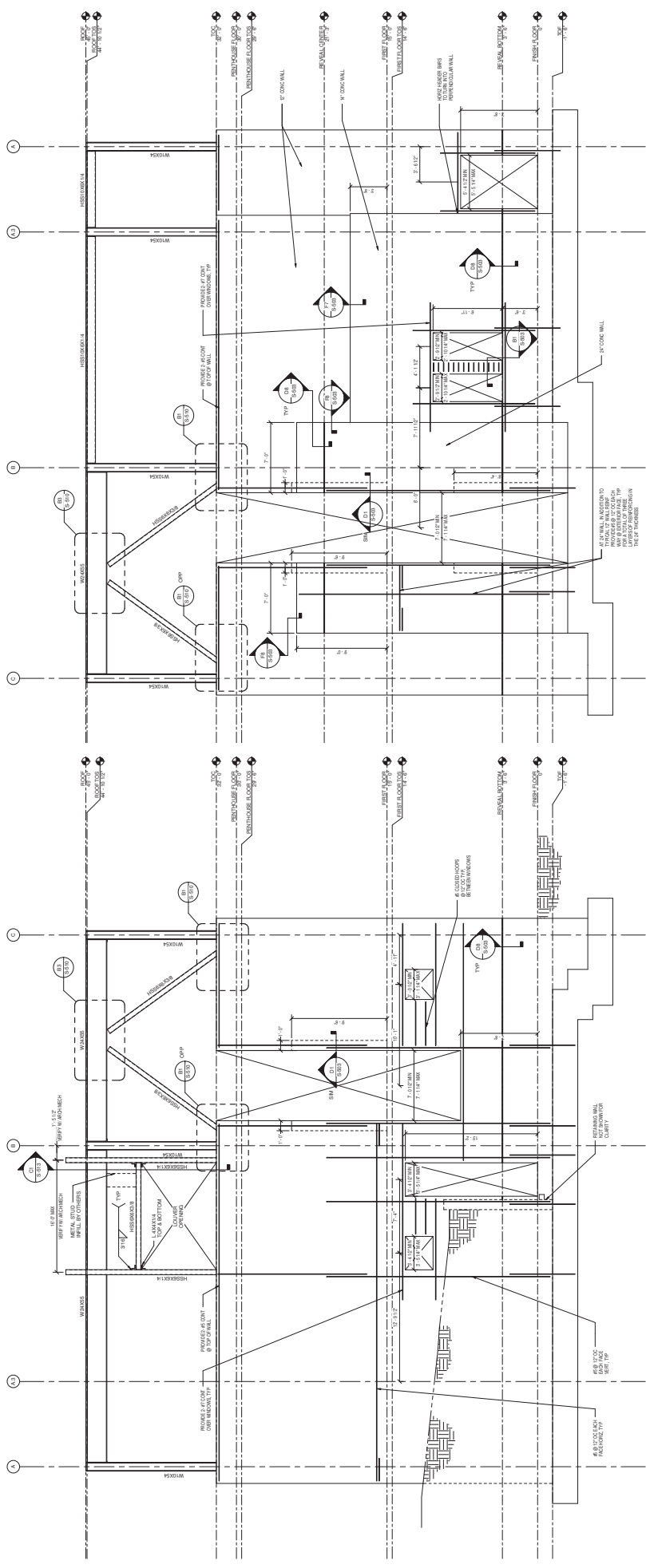
Project Title	<h1>VMU Replacement And Expansion Project</h1>		
Location	San Francisco VA Medical Center 4150 Clement Street, San Francisco, CA 94121		
Date	04 March 2011	Reviewed by	Checker
		Drawn	Author

<p>  </p>	<p> Drawing Title EXTERIOR ELEVATION Applicant / Project Name </p>
--	---



CONSULTANT:

[illegible][illegible]



F5 EAST EXTERIOR ELEVATION
1/4" = 1'-0"

FULLY SPRINKLERED

Project Title	<h1>VMU Replacement And Expansion Project</h1>		
Location	San Francisco VA Medical Center 4150 Clement Street, San Francisco, CA 94121		
Date	04 March 2011	Reviewed by	Checker
		Drawn	Author

ARCHITECTS/ENGINEERS:

HDR

HDR Architecture, Inc.
500 LEXINGTON STREET SUITE 300
PHILADELPHIA, PA 19106-3007
PH 215/546-4300 FAX 215/546-4302



CAL QUESTIONS	LANDSCAPE	DESIGN/DETAILS
<p>Stefan 2001 E. Duane Avenue San Mateo, CA 94406</p>	<p>William J. D'Amico 2000 S. Bascom Avenue San Jose, CA 95128</p>	<p>Tim C. Gorman Inc. 1700 N. Milpitas Milpitas, CA 95035</p>
DESIGN/DETAILS	LANDSCAPE	DESIGN/DETAILS
<p>George J. Taylor Inc./JAA 2400 S. Bascom Avenue San Jose, CA 95128</p>	<p>Gregory C. Davis 1000 S. Bascom Avenue San Jose, CA 95128</p>	<p>Donald L. Taylor 2400 S. Bascom Avenue San Jose, CA 95128</p>
DESIGN/DETAILS	LANDSCAPE	DESIGN/DETAILS
<p>David W. Felt 1000 S. Bascom Avenue San Jose, CA 95128</p>	<p>David W. Felt 1000 S. Bascom Avenue San Jose, CA 95128</p>	<p>David W. Felt 1000 S. Bascom Avenue San Jose, CA 95128</p>

CONSULTANTS:

ADVERTISING: KRISTEN B. LEE KTB Advertising 10000 Wilshire Blvd., Suite 1000 Beverly Hills, CA 90210 Tel: 310/277-0770 Fax: 310/277-0771 www.kristenb.com	FINANCIAL/STRUCTURAL: WILLIAM E. BUCKLEY W.E. Buckley & Associates 10000 Wilshire Blvd., Suite 1000 Beverly Hills, CA 90210 Tel: 310/277-0770 Fax: 310/277-0771 www.webuckley.com	GENERAL CONTRACTOR: HDR Architecture, Inc. 300 Wilshire Blvd. Suite 1000 San Francisco, CA 94103 Tel: 415/774-2500 Fax: 415/774-2501 www.hdr.com	HDR Architecture, Inc. 300 Wilshire Blvd. Suite 1000 San Francisco, CA 94103 Tel: 415/774-2500 Fax: 415/774-2501 www.hdr.com
--	--	---	---

DATE	REVISOR(S)	NO
		16
		15
		14
		13
		12
		11
		10
		9
		8
		7
		6
		5
		4
		3
		2
		1
		0



REINFORCEMENT @ CONCRETE PIERS



DETAIL @ CONCRETE EAR



② TYPICAL SLAB @ SHEAR WALL OPENING



 TYPICAL SLAB @ SHEAR WALL OPENING
 TYPICAL SLAB OPENING @ PERIMETER



 TYPICAL SLAB @ SHEAR WALL OPENING
 TYPICAL SLAB OPENING @ PERIMETER
 TYPICAL SLAB / WALL CONNECTION



26 ARCHITECTURAL WALL REVEAL DETAIL



DETAIL @ 12" & 14" CONCRETE WALL

DETAIL @ 12" OR 14" & 24" CONCRETE WALL

DETAIL @ 12" & 14" CONCRETE WALL

DETAIL @ 12" OR 14" & 24" CONCRETE WALL

CONSULTANTS:

CONSULTANT:

