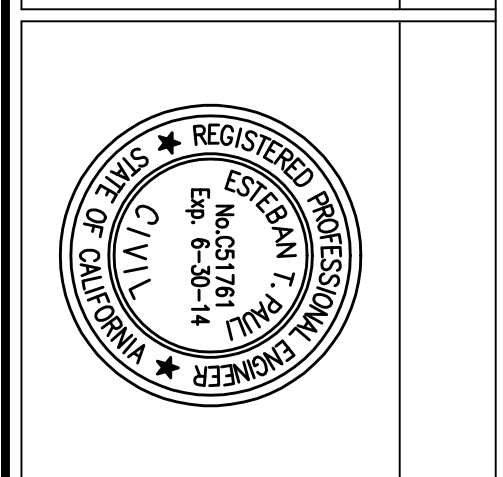


Revisions	Date

CONSULTANTS:



ARCHITECT/ENGINEERS:

PAULINE ENGINEERING, INC.
2501 N. SHAM AVE., #21, FRESNO, CA 93711
PH: (559)237-4408 - FAX: (559)237-4409
E-MAIL: paulineengineering@csccolinet
www.paulineengineering.com

Drawing Title	Project Number	Office of Construction and Facilities Management
LANDSCAPE REFERENCES	576-12-200	
Approved Project Director	Building Number	Campus
Location	Drawing Number	
2615 E. Clinton Ave, Fresno, CA	CL100	
Date	Checked	Drawn
10/2008		
	Dwg. of --	

100% SUBMITTAL - FOR CONSTRUCTION

EXISTING TREES			
	A= SYCAMORE		D= EUCALYPTUS
	B= CHINESE ELM		E= LOCUST TREE
	C= CHINESE PISTACHIO		F= CRAPE MYRTAL
	G= BRADFORD PEAR		H= CAROB TREE
	J= ZELKOVA		K= MAGNOLIA
	M= XYLOSMA		N= ALEPPO PINE
	P= (E) TREE		
NEW TREES			
SYMBOL	Quont	Size	Description
	7	15 Gal	— PYRUS KAWAKAMI (EVER GREEN PEAR)
	74	15 Gal	— SEQUOIA SEMPERVIRENS
	97	15 Gal	— LAGERSTROEMIA INDICA MULTI-STEM LAVANDER (CRAPE MYRTLE)
	17	15 Gal	— ACER PALMATUM "BLOODGOOD" (RED JAPANESE MAPLE)
	11	15 Gal	— GINKGO BILOBA (MADEN HAIR TREE)
	5	15 Gal	— CERCOIS OCCIDENTALS (WESTERN REDBUD)
	8	15 Gal	— ACER PALMATUM TAMUKEYAMA (RED CUT LEAF JAPANESE MAPLE)
	6	15 Gal	— PISTACHIA CHINENSIS "KEITH DAVEY" (CHINESE PISTACHIO)
	2	15 Gal	— QUERCUS VIRGINIANA (SOUTHERN LIVE OAK)
	4	15 Gal	— PODOCARPUS GRACILIOR (FERN PINE)

NEW SHRUBS			
SYMBOL	Quont	Size	Description
	91	16gal	— AZALEA SOUTHERN INDICA (SUN AZALEA)
	176	10gal	— AGAPANTHUS AFRICANUS "PETER PAN" 9 (DWARF LILY OF THE NILE)
	37	50gal	— CAMELLIA JAPONICA (CAMELLIA)
	25	16gal	— CEANOTHUS GRISEUS HORIZONTALIS (CARMEL CREEPER)
	2	15gal	— CUPRESSOCYPARIS LEYLANDI (LEYLANDI CYPRESS)
	26	50gal	— ELACOCARPUS DECIPENS (JAPANESE BLUEBERRY)
	3	16gal	— HYDRANGEA MACROPHYLLA (HYDRANGEA)
	45	16gal	— LIRIOPE SPICATA (LIRIOPE)
	121	10gal	— LOROPETALUM CHINENSIS— "FIRE DANCE" (RAZZLEBERRY)
	52	16gal	— MAHONIA ACQUIFOLIUM COMPACTA (COMPACT OREGON GRAPE)
	27	16gal	— MICROLEPIA STRIGOSA (LACE FERN)
	83	50gal	— NANDINA DOMESTICA COMPACTA (COMPACT HEAVENLY BAMBOO)
	15	15gal	— PODOCARPUS HENKEWI (LONG LEAFED YELLOWWOOD)
	14	16gal	— RAPHIOLEPIS INDICA "BALLERINA" (PINK INDIAN HAWTHORNE)
	233	50gal	— ROSA — LANDSCAPE ROSE "FIREBIRD" (RED ROSE)
	281	50gal	— ROSA — LANDSCAPE ROSE "ICEBERG" (WHITE ROSE)
	216	16gal	— TULBAGHIA VIOLAGEA (SOCIETY GARLIC)
	53	50gal	— XYLOSMA SENTICOA (SHINY XYLOSMA)
NEW GROUND COVERS			
SYMBOL	Area	Description	
	10378 square ft.	RT. CUT. AULICA REPENS (BRONZE AULICA) PLANT 12" O.C.	
	28790 square ft.	RT. CUT. HYPERICUM CALYCINUM (ST. JOHNS WORT) PLANT 24" O.C.	
	5674 square ft.	RT. CUT. GAZANIA HYBRID "MITSUI YELLOW" (MITSUI YELLOW GAZANIA) PLANT 12" O.C.	
	313 square ft.	RT. CUT. OPHIOPOGON JAPONICUM (MONDO GRASS) PLANT 6" O.C.	
	9470 square ft.	RT. CUT. POLYGONUM CAPITATUM (PINK HEAD KNOTWEED) PLANT 12" O.C.	
	1517 square ft.	(E) MEMORIAL ROSE GARDEN TO REMAIN. MAINTAIN EXISTING ROSES AND ADD 2" THICK LAYER OF RED LAVA ROCK AS PER CONTRACT SPECIFICATIONS	
	500 square ft.	(N) MULCH AS PER CONTRACT SPECIFICATIONS	
	5786 square ft.	MEDIUM FESCUE MIX	
NEW LAWN			
	5786 square ft.	MEDIUM FESCUE MIX	