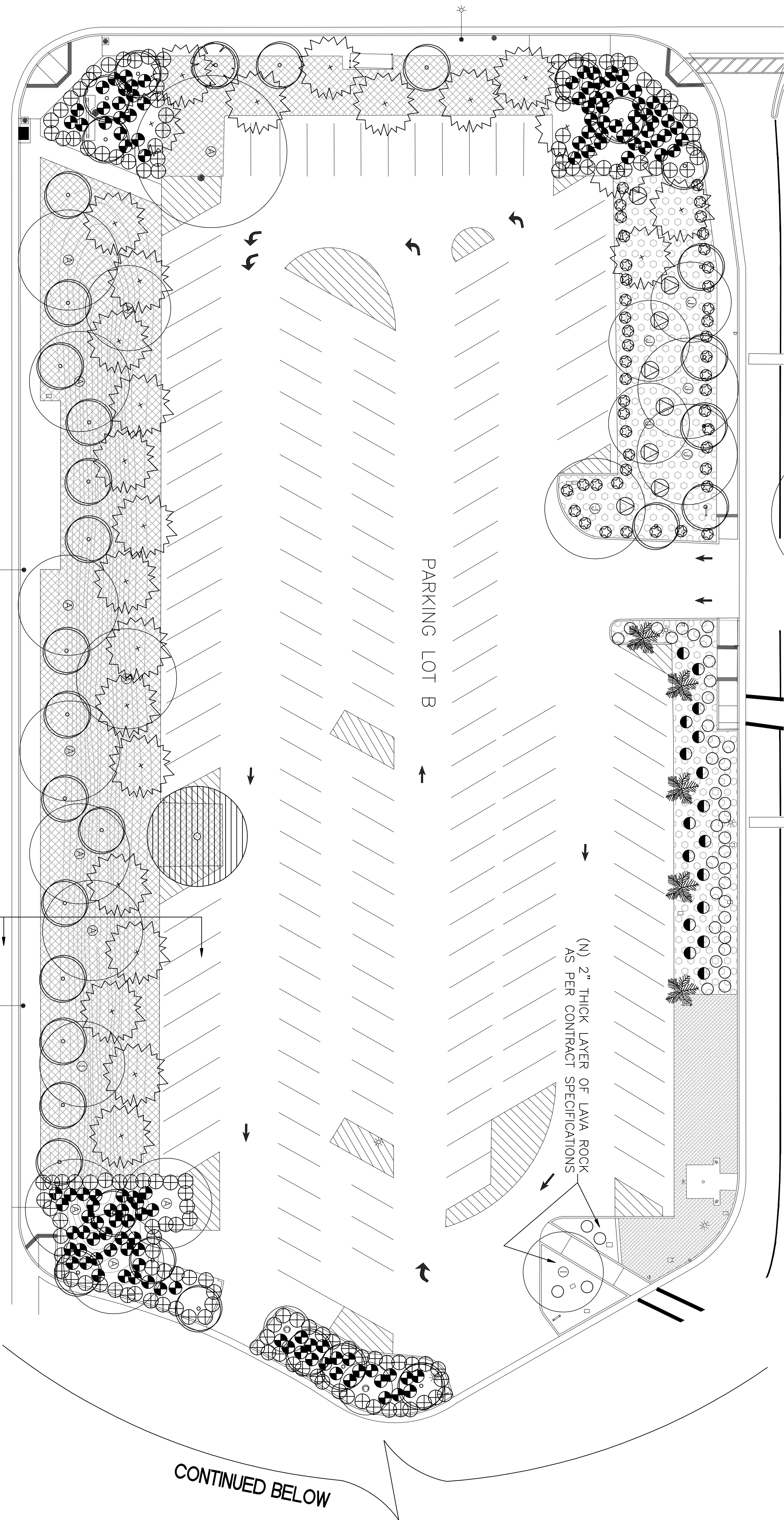
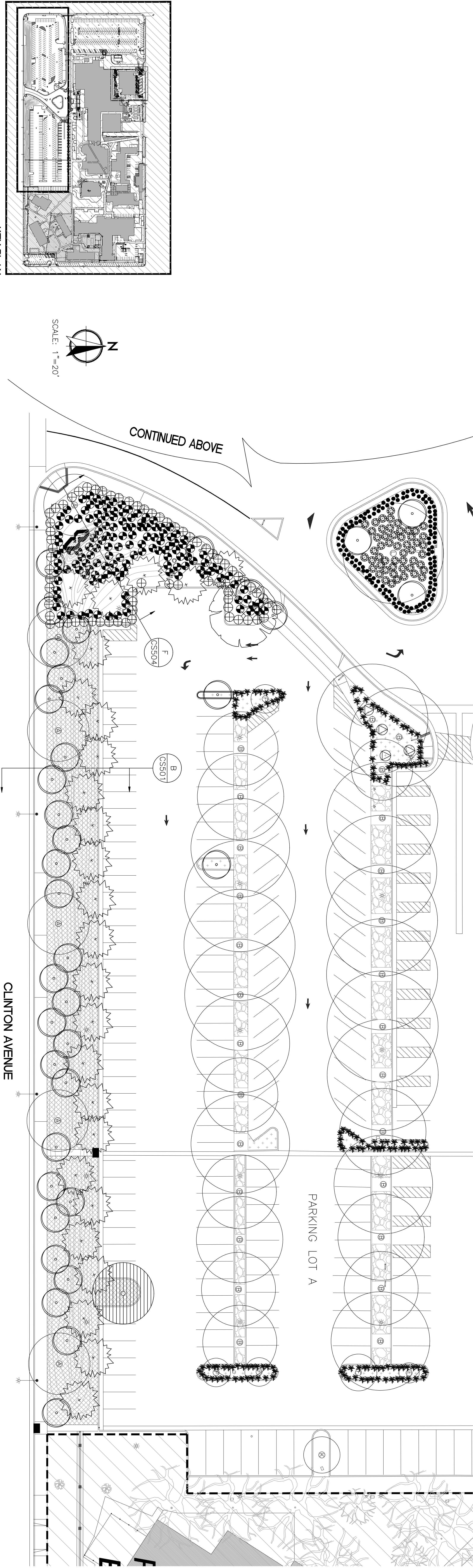


CONTINUED ON PAGE CL102



REFER TO SHEET CL100 FOR
LANDSCAPE MATERIAL REFERENCES

CONTINUED ON PAGE CL103



KEY PLAN

CONSULTANTS:

ARCHITECT/ENGINEERS:

PAULI ENGINEERING, INC.
2501 N. SHAN AVE., #21, FRESNO, CA 93711
PH: (559)237-4408 - FAX: (559)237-4409
E-MAIL: pauliengineering@comcast.net
www.pauliengineering.com



PROPOSED LANDSCAPE

SITE IRRIGATION AND
LANDSCAPE IMPROVEMENTS

Location
2615 E. Clinton Ave, Fresno, CA
Date
10/2009

Project Number
570-12-200
Building Number
Campus
Drawing Number
CL101
Dwg. of -

Office of
Construction
and Facilities
Management
Department of
Veterans Affairs